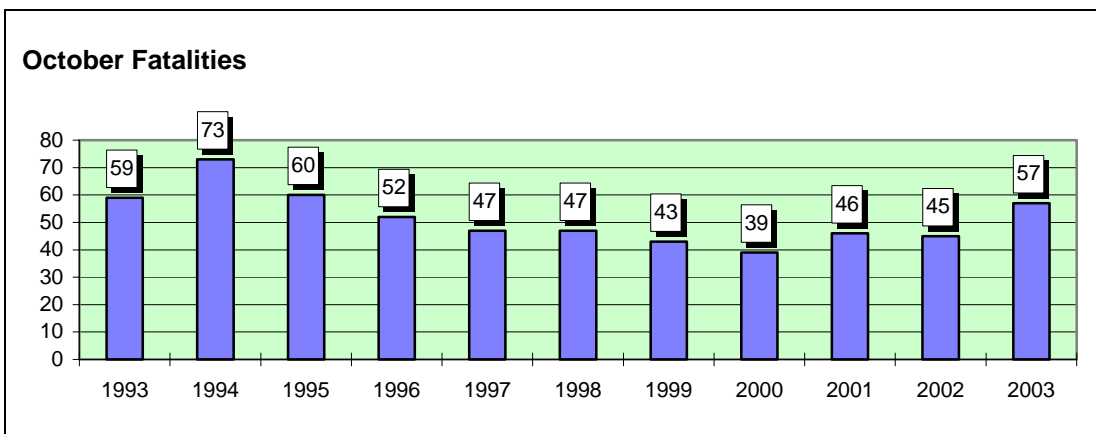




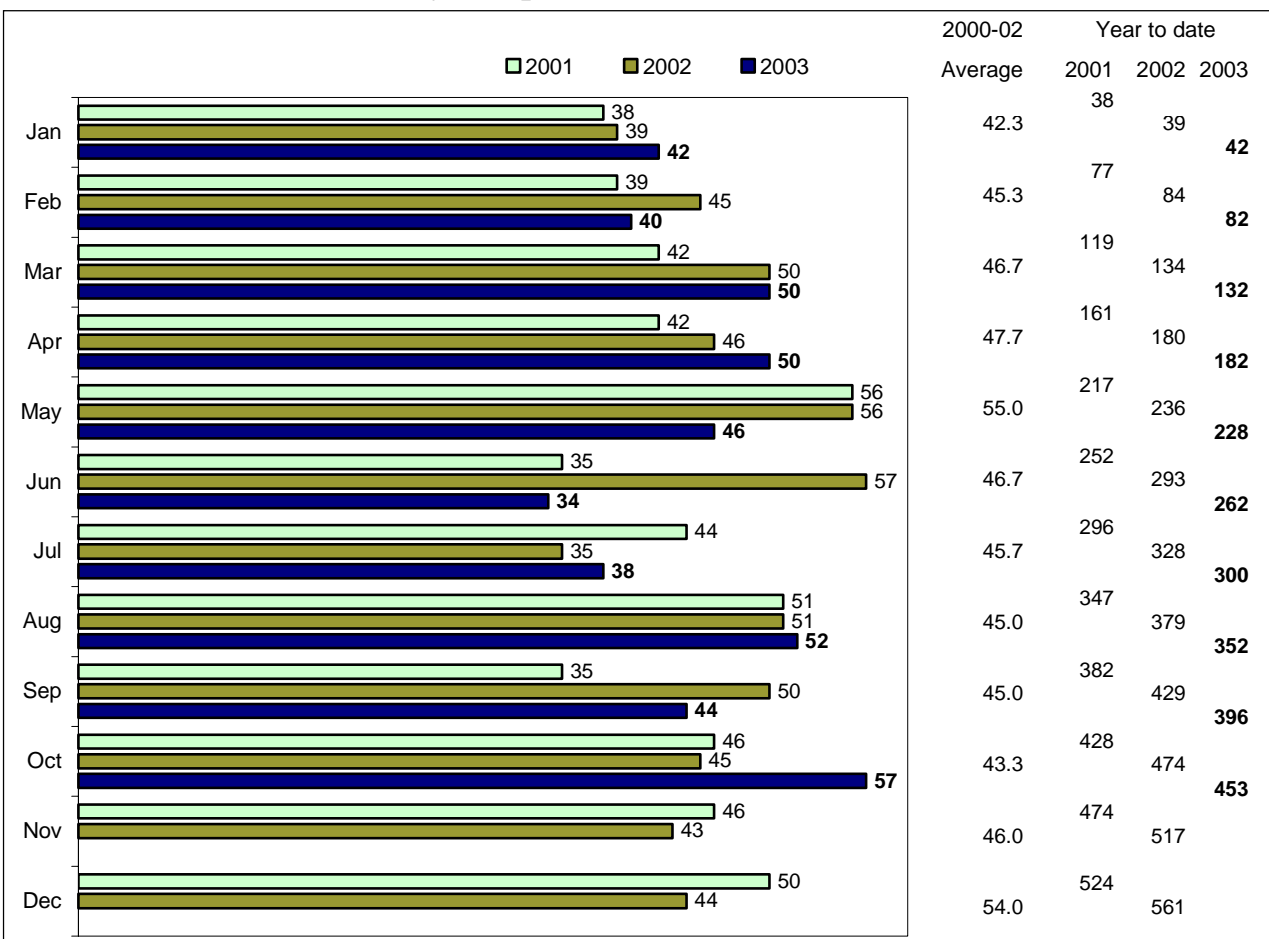
PRELIMINARY TRAFFIC ACCIDENT DATA

MONTHLY BULLETIN
OCTOBER 2003

NSW road fatalities for October: 1993 - 2003



NSW road fatalities: monthly comparison



This month's key points

- There were 57 fatalities recorded on NSW roads in October 2003, which is 12 (27%) more than for October 2002.
- The main increases in fatalities for October, compared with October 2002, were:
 - amongst drivers (up from 21 to 30)
 - amongst females (up from 9 to 18)
 - on State Highways (up from 12 to 26)
- The preliminary fatality total for the first ten months of 2003 is 453, which is 21 fewer than the total for the first ten months of 2002.

TABLE OF CONTENTS

TABLE OF CONTENTS	1
SECTION 1: MONTHLY STATISTICS	1
1.1 FATALITIES	1
1.2 FATAL ACCIDENTS	2
1.3 COMPARISON WITH OTHER STATES	3
1.3.1 Fatalities.....	3
1.3.2 Fatal Accidents.....	3
SECTION 2: RATES AND INDICATORS	4
2.1 FATALITY RATES FOR 12-MONTH PERIOD ENDING OCTOBER 2003	4
SECTION 3: TRENDS	5
3.1 FATALITIES - OVERALL TREND.....	5
3.1.1 Number of fatalities for 12 months ending October 2003, road user class	5
3.1.2 Number of fatalities for 12 months ending October 2003, sex of fatality	5
3.1.3 Number of fatalities for 12 months ending October 2003, age of fatality	6
3.1.4 Number of fatalities for 12 months ending October 2003, urbanisation	7
3.1.5 Number of fatalities for 12 months ending October 2003, RTA Region	7
3.2 FACTORS INVOLVED IN FATAL ACCIDENTS	8
3.2.1 Number of fatal accidents for 12 months ending October 2003, speeding involvement.....	8
3.2.2 Number of fatal accidents for 12 months ending October 2003, fatigue involvement.....	8
3.2.3 Number of fatal accidents for 12 months ending August 2003, alcohol involvement	8
3.3 SAFETY DEVICE USAGE OF FATALITIES	9
3.3.1 Number of road vehicle fatalities for 12 months ending October 2003, safety device usage, road user class.....	9
3.4 MOTOR VEHICLE CONTROLLERS INVOLVED IN FATAL ACCIDENTS	10
3.4.1 Number of motor vehicle controllers involved in fatal accidents for 12 months ending October 2003, sex of controller.....	10
3.4.2 Number of motor vehicle controllers involved in fatal accidents for 12 months ending October 2003, age of controller.....	10
3.4.3 Number of motor vehicle controllers involved in fatal accidents for 12 months ending August 2003, alcohol involvement.....	10
3.5 CASUALTIES - OVERALL TREND	11
3.5.1 Twelve months comparison.....	11
3.5.2 Year-to-date comparison	11

Explanatory Notes

- Data are preliminary and are compiled on the first working day of the month.
- Casualty figures reported in Section 3.5 are based on preliminary data supplied by the NSW Police Service. They are comprised of all casualties, including fatalities.
- Vehicle kilometres travelled are estimates based on changes in fuel consumption since the Australian Bureau of Statistics Survey of Motor Vehicle Use.

SECTION 1: MONTHLY STATISTICS

1.1 FATALITIES

	Oct 2003	Oct 2002	Differ- ence	Year to date 2003	Year to date 2002	Differ- ence
Road User Class						
Driver	30	21	9	208	231	-23
Passenger	18	11	7	113	111	2
Pedestrian	7	4	3	80	81	-1
Motorcyclist ¹	2	7	-5	42	39	3
Pedal cyclist ¹	0	2	-2	9	12	-3
Other	0	0	0	1	0	0
Total	57	45	12	453	474	-21
Age (years)						
0-4	1	0	1	11	6	5
5-16	7	5	2	21	21	0
17-20	3	13	-10	50	63	-13
21-25	3	2	1	50	45	5
26-29	2	2	0	25	32	-7
30-39	10	6	4	70	79	-9
40-49	5	6	-1	52	69	-17
50-59	10	2	8	61	46	15
60-69	7	3	4	22	36	-14
70+	8	6	2	82	76	6
Unknown	1	0	1	9	1	8
Total	57	45	12	453	474	-21
Sex						
Male	39	36	3	313	340	-27
Female	18	9	9	140	134	6
Total ²	57	45	12	453	474	-21
RTA Region						
Sydney	12	10	2	144	146	-2
Northern	10	6	4	81	64	17
Hunter	14	8	6	84	89	-5
Southern	12	13	-1	69	67	2
South West	5	4	1	40	51	-11
Western	4	4	0	35	57	-22
Total	57	45	12	453	474	-21
Road Classification						
Freeway/Motorway	1	0	1	6	14	-8
State Highway	26	12	14	153	152	1
Other Classified Road ³	13	15	-2	144	161	-17
Unclassified road	17	18	-1	150	147	3
Total	57	45	12	453	474	-21

¹ Includes passengers

² Includes unknown sex

³ Includes Main Road, Secondary Road and Tourist Road

1.2 FATAL ACCIDENTS

	Oct 2003	Oct 2002	Differ- ence	Year to date 2003	Year to date 2002	Differ- ence
Urbanisation						
Sydney Metropolitan Area	12	10	2	134	130	4
Newcastle Metropolitan Area	1	2	-1	18	18	0
Wollongong Metropolitan Area	1	0	1	17	15	2
Country urban (speed limit ≤80km/h)	14	11	3	95	96	-1
Country non-urban (speed limit >80km/h)	19	14	5	143	161	-18
Country unknown (speed limit unknown)	0	0	0	1	0	1
Total	47	37	10	408	420	-12
Location Type						
Intersection	11	5	6	99	86	13
Non-Intersection	36	32	4	309	334	-25
Total	47	37	10	408	420	-12
Route						
Princes Highway	5	1	4	21	14	7
Hume Highway	2	1	1	10	17	-7
Great Western Highway	1	1	0	6	10	-4
New England Highway	2	1	1	8	7	1
Pacific Highway	6	4	2	48	35	13
Newell Highway	0	2	-2	5	12	-7
All other routes	31	27	4	310	325	-15
Total	47	37	10	408	420	-12
Road Classification						
Freeway/Motorway	1	0	1	5	14	-9
State Highway	19	11	8	130	128	2
Other Classified road ¹	12	10	2	131	141	-10
Unclassified road	15	16	-1	142	137	5
Total	47	37	10	408	420	-12
RTA Region						
Sydney	12	10	2	139	138	1
Northern	8	6	2	71	56	15
Hunter	9	8	1	67	83	-16
Southern	9	5	4	62	54	8
South West	5	4	1	37	43	-6
Western	4	4	0	32	46	-14
Total	47	37	10	408	420	-12
Type of Accident						
Car accident	36	21	15	321	308	13
Light truck accident	11	6	5	59	66	-7
Heavy truck accident	9	8	1	55	86	-31
Heavy rigid truck accident	5	3	2	14	31	-17
Articulated truck accident	4	6	-2	41	60	-19
Bus accident	0	0	0	9	11	-2
Motorcycle accident	2	7	-5	40	38	2
All fatal accidents ²	47	37	10	408	420	-12

¹ Includes Main Road, Secondary Road and Tourist Road

² The type of accident categories are not mutually exclusive and must not be added together.

1.3 COMPARISON WITH OTHER STATES

Please note that data included in this section represent statistics for the previous month¹.

1.3.1 Fatalities

	Sep 2003	Sep 2002	Differ- ence	Year to date 2003	Year to date 2002	Differ- ence
State/Territory						
New South Wales	44	50	-6	397	429	-32
Victoria	17	31	-14	250	299	-49
Queensland	23	31	-8	226	232	-6
South Australia	13	13	0	115	102	13
Western Australia	13	11	2	129	137	-8
Tasmania	2	1	1	30	32	-2
Northern Territory	4	6	-2	41	37	4
Australian Capital Territory	0	0	0	7	8	-1
Total	116	143	-27	1,195	1,276	-81

1.3.2 Fatal Accidents

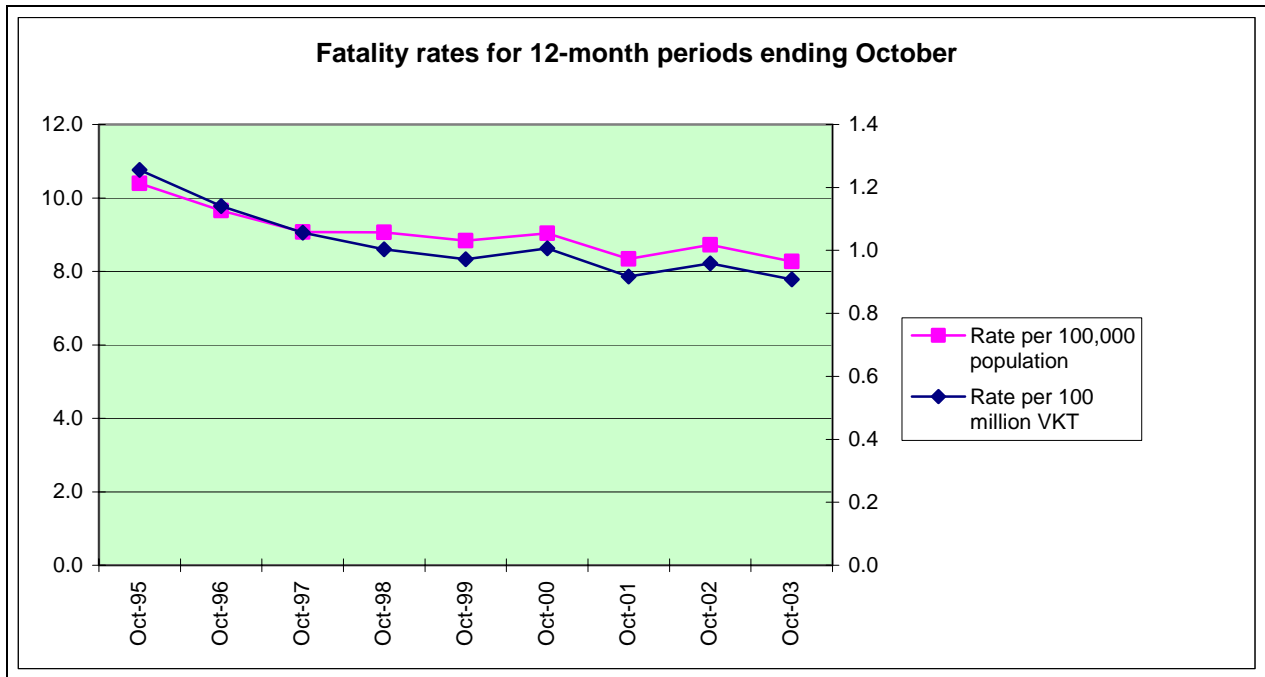
	Sep 2003	Sep 2002	Differ- ence	Year to date 2003	Year to date 2002	Differ- ence
State/Territory						
New South Wales	40	45	-5	362	383	-21
Victoria	15	28	-13	224	277	-53
Queensland	21	23	-2	208	208	0
South Australia	11	12	-1	98	94	4
Western Australia	11	9	2	115	122	-7
Tasmania	2	1	1	29	30	-1
Northern Territory	2	3	-1	34	27	7
Australian Capital Territory	0	0	0	6	6	0
Total	102	121	-19	1,076	1,147	-71

¹ Source: Australian Transport Safety Bureau

SECTION 2: RATES AND INDICATORS

2.1 FATALITY RATES FOR 12-MONTH PERIOD ENDING OCTOBER 2003

Number of fatalities	540
Rate per 100,000 population ¹	8.3
Rate per 100 million vehicle kilometres travelled (VKT) ²	0.9

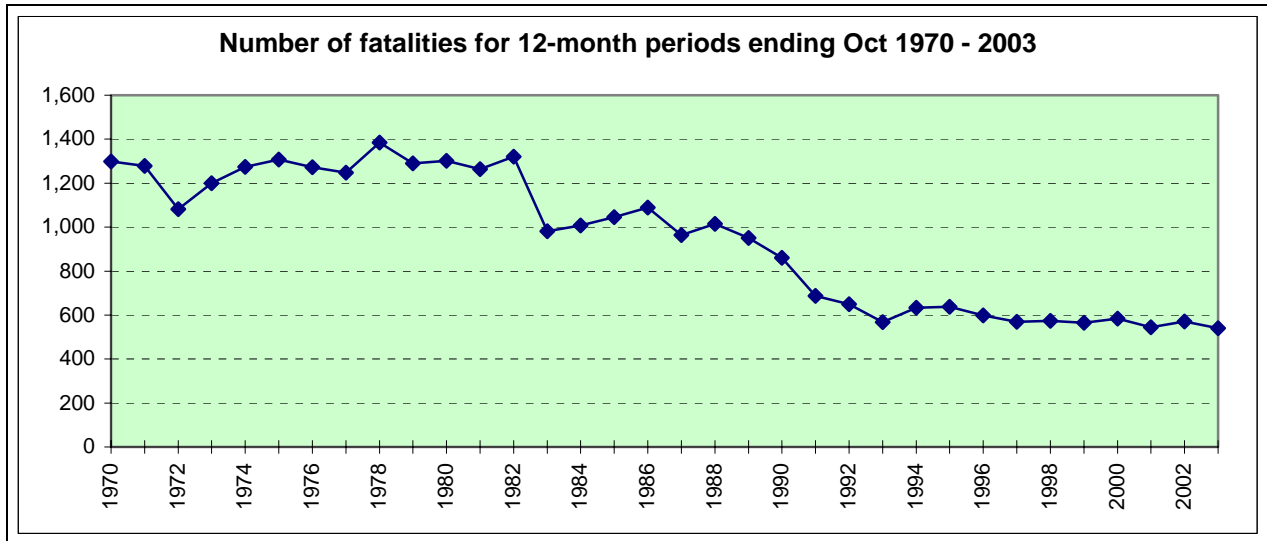


¹ Based on preliminary estimated resident population data

² Estimates based on changes in fuel consumption since the Australian Bureau of Statistics Survey of Motor Vehicle Use
RTA Monthly Bulletin of Preliminary Traffic Accident Data for October 2003

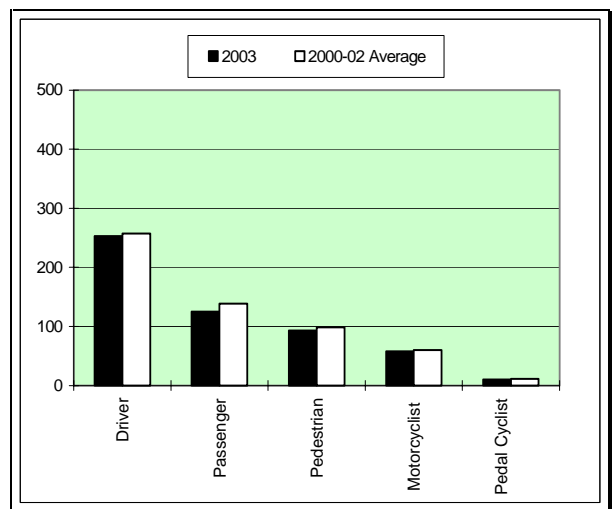
SECTION 3: TRENDS

3.1 FATALITIES - OVERALL TREND



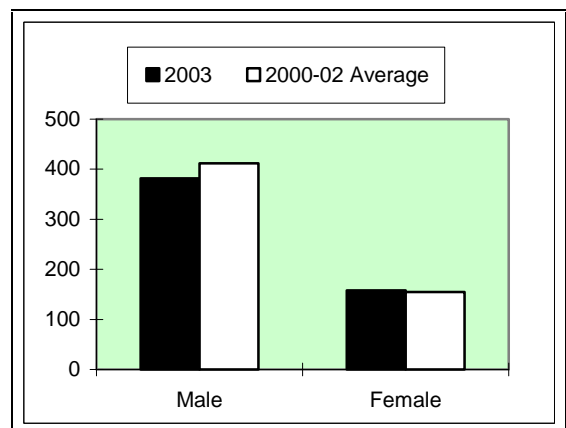
3.1.1 Number of fatalities for 12 months ending October 2003, road user class

Road User Class ¹	2003	2000-02 Average	% Change
Driver	253	257.0	-1.6%
Passenger	125	138.7	-9.9%
Pedestrian	93	98.7	-5.7%
Motorcyclist	58	60.0	-3.3%
Pedal Cyclist	10	11.3	-11.8%
Other	1	0.7	N/A
Total	540	566.3	-4.6%



3.1.2 Number of fatalities for 12 months ending October 2003, sex of fatality

Sex of fatality	2003	2000-02 Average	% Change
Male	382	411.7	-7.2%
Female	158	154.7	2.2%
Total ²	540	566.3	-4.6%

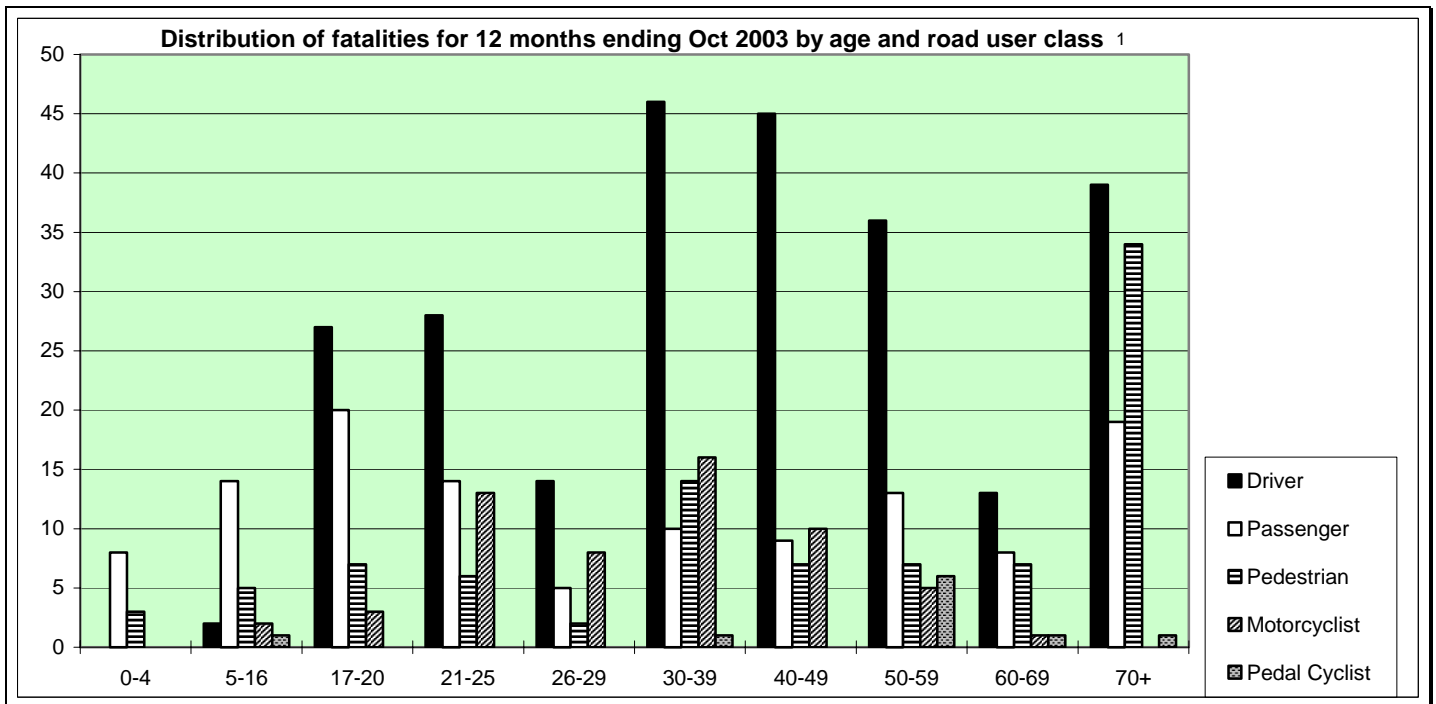
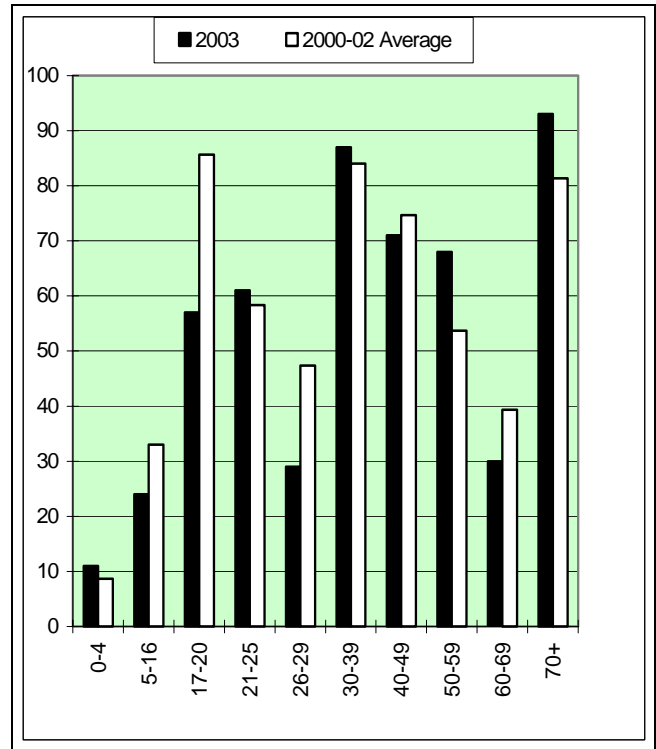


¹ The categories motorcyclist and pedal cyclist include passengers.

² Includes unknown sex

3.1.3 Number of fatalities for 12 months ending October 2003, age of fatality

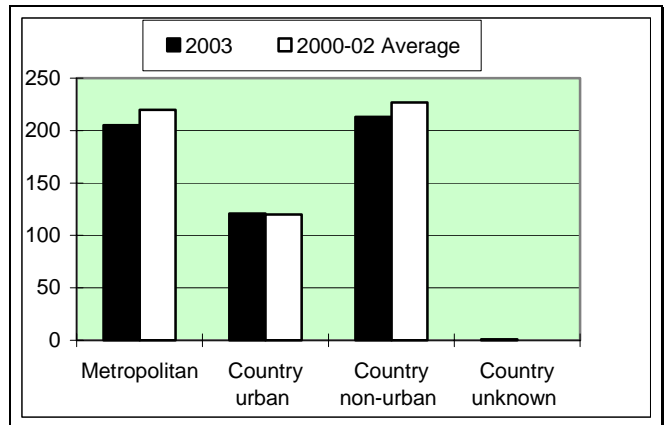
Age	2003	2000-02 Average	% Change
0-4	11	8.7	26.9%
5-16	24	33.0	-27.3%
17-20	57	85.7	-33.5%
21-25	61	58.3	4.6%
26-29	29	47.3	-38.7%
30-39	87	84.0	3.6%
40-49	71	74.7	-4.9%
50-59	68	53.7	26.7%
60-69	30	39.3	-23.7%
70+	93	81.3	14.3%
Unknown	9	0.3	N/A
Total	540	566.3	-4.6%



¹ The categories motorcyclist and pedal cyclist include passengers.

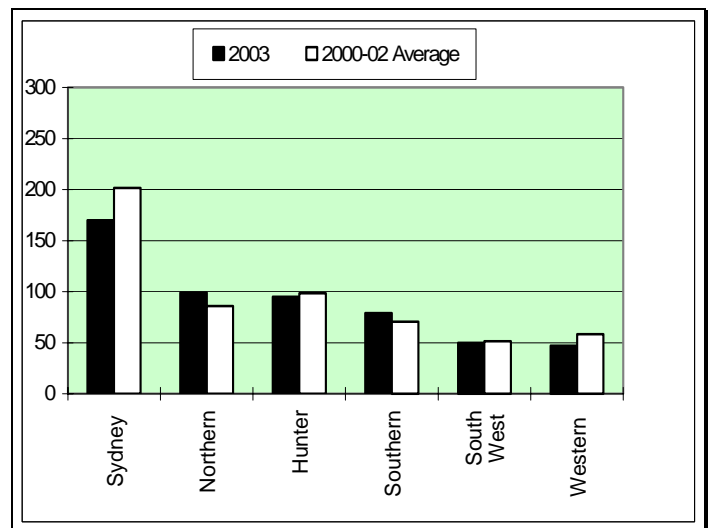
3.1.4 Number of fatalities for 12 months ending October 2003, urbanisation

Urbanisation	2003	2000-02 Average	% Change
Metropolitan	205	219.7	-6.7%
Country urban	121	120.0	0.8%
Country non-urban	213	226.7	-6.0%
Country unknown	1	0.0	
Total	540	566.3	-4.6%



3.1.5 Number of fatalities for 12 months ending October 2003, RTA Region

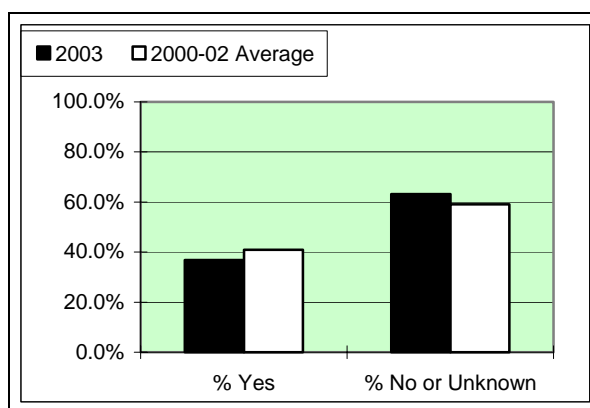
RTA Region	2003	2000-02 Average	% Change
Sydney	170	201.7	-15.7%
Northern	99	86.0	15.1%
Hunter	95	98.3	-3.4%
Southern	79	70.7	11.8%
South West	50	51.3	-2.6%
Western	47	58.3	-19.4%
Total	540	566.3	-4.6%



3.2 FACTORS INVOLVED IN FATAL ACCIDENTS

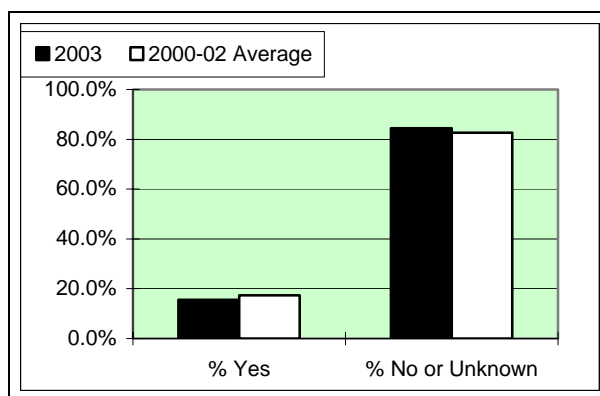
3.2.1 Number of fatal accidents for 12 months ending October 2003, speeding involvement

Excessive Speed?	2003	2000-02 Average	% Change
Yes	180	208.7	-13.7%
% Yes	36.8%	40.9%	
No or Unknown	309	302.0	2.3%
% No or Unknown	63.2%	59.1%	
Total	489	510.7	-4.2%



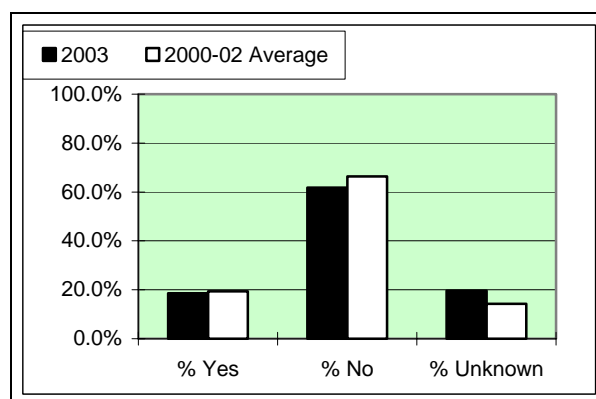
3.2.2 Number of fatal accidents for 12 months ending October 2003, fatigue involvement

Fatigue?	2003	2000-02 Average	% Change
Yes	76	88.7	-14.3%
% Yes	15.5%	17.4%	
No or Unknown	413	422.0	-2.1%
% No or Unknown	84.5%	82.6%	
Total	489	510.7	-4.2%



3.2.3 Number of fatal accidents for 12 months ending August 2003, alcohol involvement

Alcohol? ¹	2003	2000-02 Average	% Change
Yes	90	99.3	-9.4%
% Yes	18.6%	19.4%	
No	299	339.3	-11.9%
% No	61.8%	66.4%	
Unknown	95	72.7	30.7%
% Unknown	19.6%	14.2%	
Total	484	511.3	-5.3%

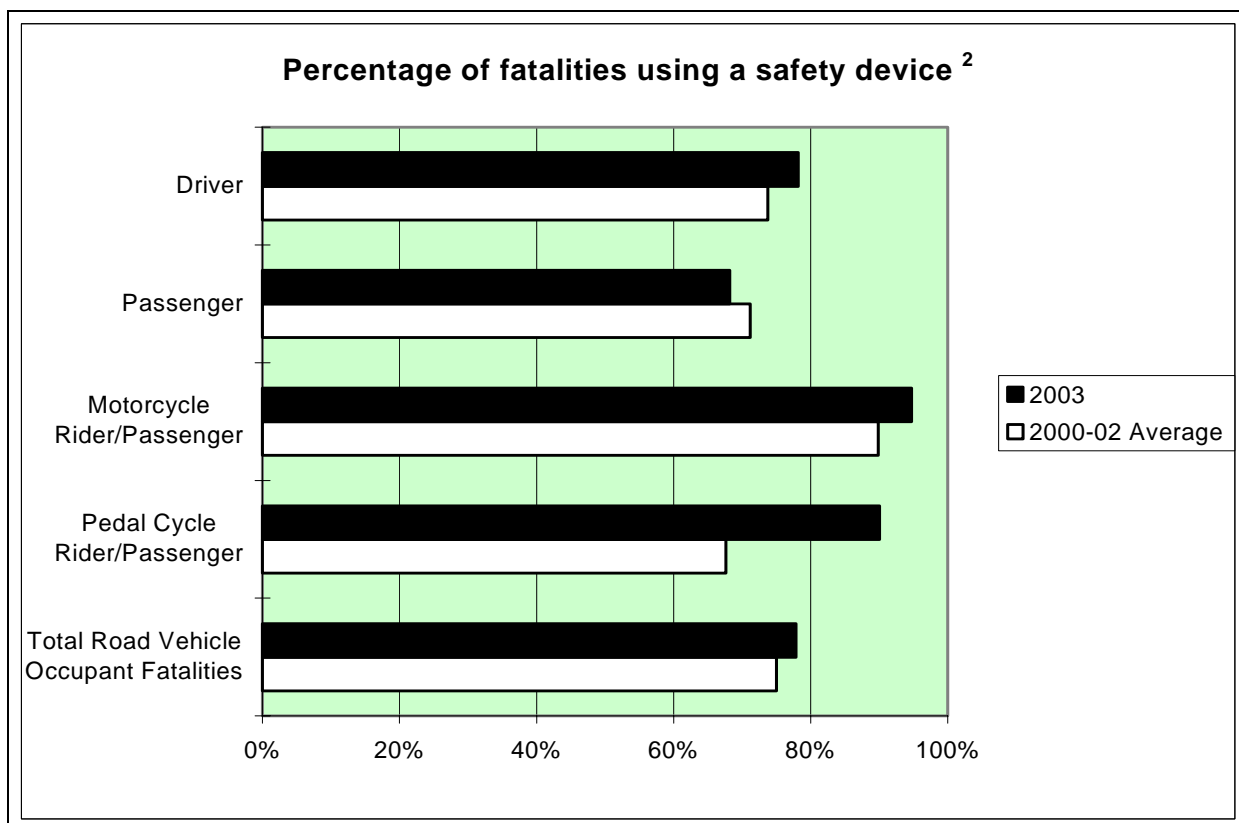


¹ Data for blood alcohol concentration are only available up to August 2003 inclusive.

3.3. SAFETY DEVICE USAGE OF FATALITIES

3.3.1 Number of road vehicle fatalities for 12 months ending October 2003, safety device usage, road user class

Safety Device?	Driver		Passenger		Motorcycle Rider/Passenger		Pedal Cycle Rider/Passenger		Total Road Vehicle Occupant Fatalities ¹	
	2003	2000-02 Average	2003	2000-02 Average	2003	2000-02 Average	2003	2000-02 Average	2003	2000-02 Average
Worn	161	171.3	75	94.0	54	53.3	9	7.7	299	326.7
Not worn	45	61.0	35	38.0	3	6.0	1	3.7	85	108.7
Unknown	47	24.7	15	6.7	1	0.7	0	0.0	63	32.3
Total	253	257.0	125	138.7	58	60.0	10	11.3	447	467.7



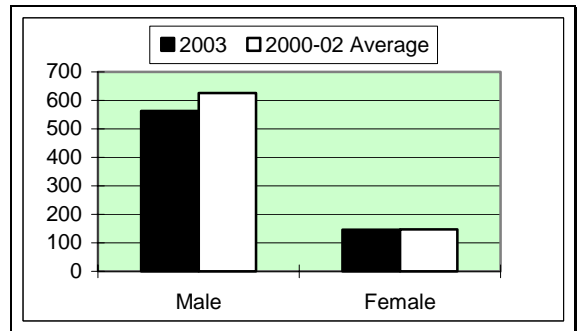
¹ Includes fatalities of other or unknown road user class

² Excludes cases of unknown safety device usage

3.4 MOTOR VEHICLE CONTROLLERS INVOLVED IN FATAL ACCIDENTS

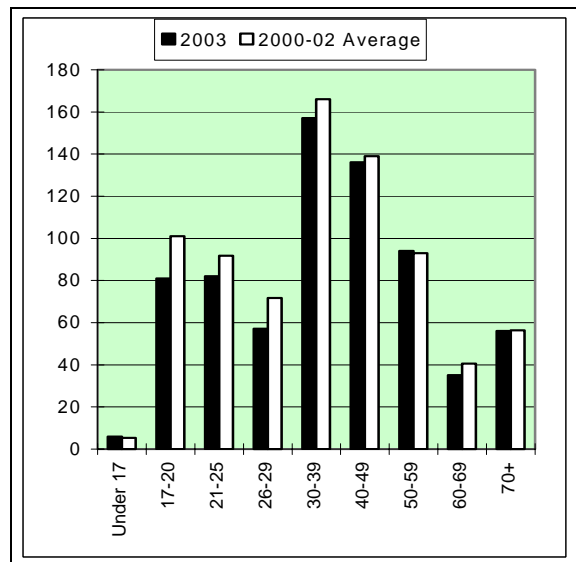
3.4.1 Number of motor vehicle controllers involved in fatal accidents for 12 months ending October 2003, sex of controller

Sex	2003	2000-02 Average	% Change
Male	563	625.3	-10.0%
Female	146	147.7	-1.1%
Unknown	5	8.0	-37.5%
Total	714	781.0	-8.6%



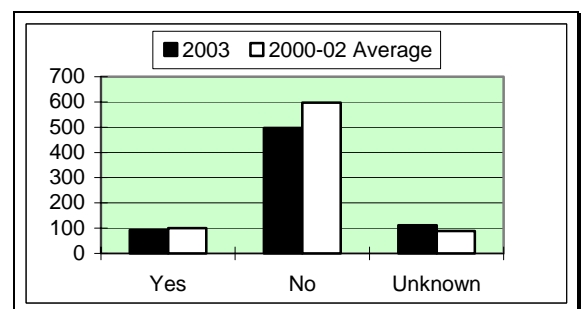
3.4.2 Number of motor vehicle controllers involved in fatal accidents for 12 months ending October 2003, age of controller

Age	2003	2000-02 Average	% Change
Under 17	6	5.3	12.5%
17-20	81	101.0	-19.8%
21-25	82	91.7	-10.5%
26-29	57	71.7	-20.5%
30-39	157	166.0	-5.4%
40-49	136	139.0	-2.2%
50-59	94	93.0	1.1%
60-69	35	40.7	-13.9%
70+	56	56.3	-0.6%
Unknown	10	16.3	-38.8%
Total	714	781.0	-8.6%



3.4.3 Number of motor vehicle controllers involved in fatal accidents for 12 months ending August 2003, alcohol involvement

Alcohol Involvement ¹	2003	2000-02 Average	% Change
Yes	92	100.3	-8.3%
No	497	597.0	-16.8%
Unknown	111	89.0	24.7%
Total	700	786.3	-11.0%



¹ Data for blood alcohol concentration are only available up to August 2003 inclusive.

3.5 CASUALTIES - OVERALL TREND

Casualty figures presented in this section are based on preliminary data supplied by the NSW Police from the Computerised Operational Policing System (COPS) database.

RTA Region figures are estimates based on combinations of NSW Police Local Area Commands. These combinations do not correspond exactly to RTA Region boundaries. NSW Police introduced revised Local Area Command boundaries on 1 July 2002.

3.5.1 Twelve months comparison

RTA Region	12 Months ending Sep, 2003	12 Months ending Sep, 2002	% Change
Sydney	16,020	16,384	-2.2%
Northern	2,456	2,680	-8.4%
Hunter	3,886	4,200	-7.5%
Southern	2,871	3,078	-6.7%
South West	1,186	1,318	-10.0%
Western	1,490	1,562	-4.6%
Total	27,909	29,222	-4.5%

3.5.2 Year-to-date comparison

RTA Region	Jan to Sep, 2003	Jan to Sep, 2002	% Change
Sydney	12,055	12,095	-0.3%
Northern	1,783	1,952	-8.7%
Hunter	2,916	3,062	-4.8%
Southern	2,148	2,275	-5.6%
South West	905	938	-3.5%
Western	1,081	1,168	-7.4%
Total	20,888	21,490	-2.8%