

# Labour Market Assistance Outcomes

Year ending September 2001

*This report contains information about placements, commencements and post labour market assistance outcomes achieved for Job Network services and other programmes managed by the Department of Employment and Workplace Relations (DEWR).*

## **Main features**

### **Outcomes**

The positive outcomes (employment and/or education/training) rate achieved in the year to end September 2001, three months after leaving assistance were:

- 46% for Intensive Assistance;
- 50% for Job Search Training;
- 71% for Job Matching;
- 85% for New Enterprise Incentive Scheme (NEIS);
- 34% for Work for the Dole;
- 60% for Indigenous Employment Programme Structured Training and Employment Projects (STEP);
- 73% for Indigenous Employment Programme Wage Assistance; and
- 48% for Return to Work.

### **Job Vacancies**

In the year to end September 2001, nearly 754,000 vacancies were notified on the Australian Job Search database.

### **Job Placements**

In the year to end September 2001, around 320,000 job seekers were placed into Job Matching vacancies. These include placements for those receiving other services, such as Intensive Assistance.

### **Commencements**

In the year to end September 2001, commencements by job seekers in the various types of labour market assistance included:

- 280,600 in Intensive Assistance;
- 79,000 in Job Search Training;
- 6,100 in NEIS;
- 6,300 in the Indigenous Employment Programme including STEP projects and Wage Assistance;
- 59,000 in Work for the Dole;
- 4,000 in Return to Work; and
- 20,800 in the Community Support Programme.

### **Income Support**

In the year to end September 2001, the number of job seekers in receipt of Newstart or Youth Allowance (Other) increased by over 15,000 to around 652,500 job seekers. While the number of job seekers who were long term recipients (ie on allowances for 12 months or more) decreased by nearly 18,000, the number of short term recipients increased by over 33,000.

---

## **In this issue**

Section 1: Labour Market Assistance Outcomes	Page 3
Section 2: Access to and Participation in Labour Market Assistance	Page 10
Section 3: Participation and Outcomes by Region	Page 15
Section 4: Impact on Income Support Recipients	Page 19
Technical Notes	Page 20

## **Time periods used in this report**

The Department's Post Programme Monitoring (PPM) Survey measures outcomes achieved by job seekers three months after they exit labour market assistance. This report contains outcomes data for job seekers who exited assistance in the 12 months to 30 June 2001 and their post assistance outcomes achieved by 30 September 2001.

Intensive Assistance post assistance outcomes should not be confused with *paid interim* or *paid final* outcomes. Post assistance outcomes are *all* employment and education outcomes while paid outcomes relate to a subset of employment and education outcomes where Job Network members receive payment for outcomes.

Commencement and placement data, derived from DEWR and Centrelink administrative systems, relate to job seekers who were placed in a job or commenced assistance between 1 October 1999 and 30 September 2000 and 1 October 2000 and 30 September 2001.

## **More information.....**

For further information, please contact Robert Lipp (02 6121 6046) or Michael Cameron (02 6121 7240) or e-mail [Meherun.Nisa@dewr.gov.au](mailto:Meherun.Nisa@dewr.gov.au).

© Commonwealth of Australia

This work is copyright. Apart from any use as permitted under the *Copyright Act 1968*, no part may be reproduced by any process without prior written permission from the Commonwealth available from Aus Info. Requests and inquiries concerning reproduction and rights should be addressed to the Manager, Legislative Services, AusInfo, GPO Box 1920, Canberra ACT 2601.

Department of Employment and Workplace Relations  
<http://www.dewr.gov.au/>

## Section 1: Labour Market Assistance Outcomes

### Post assistance labour market outcomes

Table 1.1 shows labour market outcomes and further assistance levels of all job seekers three months after leaving the various types of employment assistance. Job seekers are categorised as employed, unemployed, not in the labour force or in further

assistance. Care should be taken when comparing outcomes for current services with labour market programmes operating before the introduction of Job Network, where outcome rates were affected by *excluding* those who proceeded to further labour market programme assistance. The Technical Notes at the end of this report discuss this issue further.

**Table 1.1: Post assistance labour market outcomes year to end September 2001**

Labour market assistance	Employed (%)	Unemployed (%)	Not in the Labour Force (%)	Further Assistance <sup>1</sup> (%)	Exits (number)
Intensive Assistance <sup>2</sup>	39.2	39.0	14.2	7.7	261,487
Funding level A <sup>3</sup>	43.8	36.0	12.5	7.7	180,591
Funding level B <sup>3</sup>	29.1	45.5	17.8	7.6	80,896
Job Search Training <sup>2</sup>	41.4	46.3	5.2	7.0	73,159
Job Matching <sup>4</sup>	66.2	28.8	5.0	na	237,939
Job Network Eligible (JNE) <sup>5</sup>	61.6	34.1	4.3	na	138,216
Job Matching Only (JMO) <sup>6</sup>	73.1	20.7	6.2	na	99,723
NEIS <sup>2</sup>	82.6	10.5	6.0	0.9	6,443
SEDS <sup>2</sup>	29.4	34.2	14.9	21.4	1,069
Work for the Dole <sup>2</sup>	24.6	44.0	8.3	23.2	39,046
IEP - STEP <sup>2</sup>	51.6	37.4	10.2	0.8	3,206
IEP - Wage Assistance <sup>2</sup>	68.1	26.1	5.6	0.3	2,014
Return to Work	32.0	44.3	22.1	1.5	3,294

1. Further assistance includes commencements in DEWR funded labour market assistance and DEST programmes New Apprenticeships, Literacy and Numeracy and Advanced English for Migrants. Further assistance is not measured for Job Matching and job seekers who do not achieve an employment outcome are treated as either unemployed or not in the labour force.
  2. Post assistance outcomes are measured three months after the job seeker ceases assistance and relate to job seekers who ceased Intensive Assistance, Job Search Training, NEIS, Self Employment Development Scheme (SEDS), Work for the Dole, Return to Work Programme, Indigenous Employment Programme (IEP) Structured Training and Employment Projects (STEP) and IEP Wage Assistance between 1 July 2000 and 30 June 2001 and outcomes achieved by 30 September 2001. Positive and employment outcomes exclude indigenous job seekers who return to Community Development Employment Projects (CDEP) after leaving labour market assistance.
  3. The funding level refers to the level of disadvantage as defined by the Job Seeker Classification Instrument (JSCI) with B being the most disadvantaged.
  4. Post assistance outcomes for Job Matching relate to job seekers who were placed in a job between 1 July 2000 and 30 June 2001 and outcomes achieved by 30 September 2001. For job seekers who achieved a Job Matching placement within three months of leaving labour market assistance such as Job Search Training, Intensive Assistance and Work for the Dole, the outcome is excluded from Job Matching but included under the programme or service they participated in.
  5. Includes Job Network Eligible (JNE) job seekers who may be eligible for all Job Network services.
  6. Includes Job Matching Only (JMO) job seekers who are only eligible for Job Matching services.
- na - not applicable.

Source: The Post Programme Monitoring Survey conducted three months after job seekers cease assistance.

## Post assistance employment and positive outcomes

Table 1.2 shows job seekers' shares of full-time and part-time employment, education/training and positive outcomes three months after leaving different types of labour market assistance.

Education and training outcomes include job seekers who are studying at a secondary school or college, TAFE, business college or university three months after ceasing labour market assistance.

**Table 1.2: Post assistance employment and positive outcomes year to end September 2001**

	Full-time Employed (%)	Part-time Employed (%)	Total Employed (%)	Education & Training (%)	Positive Outcomes <sup>1</sup> (%)	Exits (number)
Labour market assistance						
Intensive Assistance <sup>2</sup>	16.2	23.0	39.2	8.0	45.8	261,487
Funding level A <sup>3</sup>	18.4	25.5	43.8	8.3	50.5	180,591
Funding level B <sup>3</sup>	11.3	17.8	29.1	7.5	35.8	80,896
Job Search Training <sup>2</sup>	20.6	20.8	41.4	12.9	49.7	73,159
Job Matching <sup>4</sup>	38.2	28.0	66.2	12.0	70.9	237,939
Job Network Eligible (JNE) <sup>5</sup>	36.0	25.6	61.6	10.3	66.4	138,216
Job Matching Only (JMO) <sup>6</sup>	41.5	31.6	73.1	14.4	77.8	99,723
NEIS <sup>2</sup>	50.3	32.3	82.6	7.2	84.6	6,443
SEDS <sup>2</sup>	12.9	16.5	29.4	9.9	36.9	1,069
Work for the Dole <sup>2</sup>	11.8	12.8	24.6	11.6	33.5	39,046
IEP - STEP <sup>2</sup>	33.8	17.8	51.6	20.7	59.7	3,206
IEP - Wage Assistance <sup>2</sup>	52.7	15.4	68.1	20.3	73.1	2,014
Return to Work	4.4	27.7	32.0	20.5	48.4	3,294

1. Positive outcomes include employed and education/training outcomes. Positive outcomes are less than the sum of employed and education/training outcomes because some job seekers achieve both an employment and an education outcome.
2. Post assistance outcomes are measured three months after participants leave assistance and relate to job seekers who ceased Intensive Assistance, Job Search Training, NEIS, Self Employment Development Scheme (SEDS), Work for the Dole, Return to Work Programme or Indigenous Employment Programme (IEP) Structured Training and Employment Projects (STEP) and IEP Wage Assistance between 1 July 2000 and 30 June 2001 and outcomes achieved by 30 September 2001. Positive and employment outcomes exclude indigenous job seekers who return to Community Development Employment Projects (CDEP) after leaving labour market assistance.
3. The funding level refers to the level of disadvantage as defined by the Job Seeker Classification Instrument (JSCI) with B being the most disadvantaged.
4. Post assistance outcomes for Job Matching relate to job seekers who were placed in a job between 1 July 2000 and 30 June 2001 and outcomes achieved by 30 September 2001. For job seekers who achieved a Job Matching placement within three months of leaving labour market assistance such as Job Search Training, Intensive Assistance and Work for the Dole, the outcome is excluded from Job Matching but included under the programme or service they participated in.
5. Includes Job Network Eligible (JNE) job seekers who may be eligible for all Job Network services.
6. Includes Job Matching Only (JMO) job seekers who are only eligible for Job Matching services.

Source: The Post Programme Monitoring Survey conducted three months after job seekers cease assistance.

## Intensive Assistance

1 July 2000 and 30 June 2001 and the outcomes they achieved three months later to 30 September 2001.

Table 1.3 shows post assistance outcomes for Intensive Assistance participants who exited between

**Table 1.3: Intensive Assistance: Post assistance outcomes year to end September 2001<sup>1</sup>**

Job seeker characteristics	Employment (%)	Education & Training (%)	Positive Outcomes <sup>2</sup> (%)	Exits (number)
<b>Funding level<sup>3</sup></b>				
A	43.8	8.3	50.5	180,591
B	29.1	7.5	35.8	80,896
<b>Age group (years)</b>				
15 to 20	37.1	13.6	48.7	30,015
21 to 24	38.7	11.4	48.0	30,431
25 to 34	41.0	8.9	48.1	65,748
35 to 49	41.7	7.9	48.3	88,000
50 or more	36.1	5.1	40.3	47,293
<b>Duration on income support (months)</b>				
0 to less than 6	46.0	8.4	52.9	77,654
6 to less than 12	41.3	9.2	48.9	30,033
12 to less than 24	40.0	9.8	48.0	40,352
24 to less than 36	38.2	8.4	45.1	37,612
36 or more	31.9	6.4	37.3	75,836
<b>Educational attainment</b>				
Less than Year 10	32.9	5.8	38.0	77,319
Year 10 or 11	40.6	6.8	46.2	105,606
Year 12	43.8	11.5	53.2	39,840
Post Secondary	42.7	11.6	52.1	38,722
<b>Gender</b>				
Male	37.8	6.5	43.4	181,457
Female	41.9	11.2	50.9	80,030
<b>Equity groups<sup>4</sup></b>				
Disability	31.2	6.3	36.7	42,744
Indigenous	26.9	9.9	35.5	17,172
Non-English-speaking background	38.4	11.9	48.8	55,795
Sole parents	34.7	12.4	44.8	11,796
<b>Total</b>	<b>39.2</b>	<b>8.0</b>	<b>45.8</b>	<b>261,487</b>

1. Job seekers who exited Intensive Assistance between 1 July 2000 and 30 June 2001 and achieved outcomes by 30 September 2001.
2. Positive outcomes include employed and education/training outcomes. Positive outcomes are less than the sum of employed and education/training outcomes because some job seekers achieve both an employment and an education outcome. Positive and employment outcomes exclude indigenous job seekers who return to Community Development Employment Projects (CDEP) after leaving labour market assistance.
3. The funding level refers to the level of disadvantage as defined by the Job Seeker Classification Instrument (JSCI), with funding level B being the most disadvantaged.
4. Equity groups are not mutually exclusive.

Source: The Post Programme Monitoring Survey conducted three months after job seekers cease assistance.

## Job Search Training

Table 1.4 shows post assistance outcomes for Job Search Training participants who exited assistance

between 1 July 2000 and 30 June 2001 and the outcomes they achieved three months later, up to 30 September 2001.

**Table 1.4: Job Search Training: Post assistance outcomes year to end September 2001<sup>1</sup>**

Job seeker characteristics	Employment (%)	Education & Training (%)	Positive Outcomes <sup>2</sup> (%)	Exits (number)
<b>Age group (years)</b>				
15 to 20	41.4	19.6	54.3	11,880
21 to 24	47.6	17.1	58.2	13,689
25 to 34	43.2	12.1	50.7	22,203
35 to 49	39.6	10.2	46.3	19,923
50 or more	33.9	7.7	39.1	5,464
<b>Duration on income support (months)</b>				
0 to less than 6	42.9	13.0	51.2	46,948
6 to less than 12	39.4	12.0	47.2	13,915
12 to less than 24	39.0	12.6	47.1	7,079
24 to less than 36	38.3	16.1	48.6	3,840
36 or more	31.9	9.0	37.0	1,358
<b>Educational attainment</b>				
Less than Year 10	32.4	4.6	35.8	1,719
Year 10 or 11	38.5	8.9	44.7	25,487
Year 12	42.6	16.5	53.1	18,897
Post Secondary	43.7	14.4	52.6	27,056
<b>Gender</b>				
Male	38.3	11.0	45.9	49,515
Female	47.4	16.4	57.0	23,644
<b>Equity groups<sup>3</sup></b>				
Disability	33.3	10.4	40.6	4,186
Indigenous	26.9	11.8	36.5	716
Non-English-speaking background	37.0	16.5	48.8	8,381
Sole Parents	35.4	13.2	43.2	1,384
<b>Total</b>	<b>41.4</b>	<b>12.9</b>	<b>49.7</b>	<b>73,159</b>

1. Job seekers who ceased Job Search Training between 1 July 2000 and 30 June 2001 and outcomes achieved by 30 September 2001.
2. Positive outcomes include employed and education/training outcomes. Positive outcomes are less than the sum of employed and education/training outcomes because some job seekers achieve both an employment and an education outcome. Positive and employment outcomes exclude indigenous job seekers who return to Community Development Employment Projects (CDEP) after leaving labour market assistance.
3. Equity groups are not mutually exclusive.

Source: The Post Programme Monitoring Survey conducted three months after job seekers cease assistance.

## Job Matching

Table 1.5 shows the employment outcomes achieved by job seekers who were placed in an eligible job

between 1 July 2000 and 30 June 2001 and outcomes achieved three months later, up to 30 September 2001.

**Table 1.5: Job Matching: Post assistance outcomes year to end September 2001<sup>1</sup>**

Job seeker characteristics	Employment (%)	Education & Training (%)	Positive Outcomes <sup>2</sup> (%)	Placements <sup>3</sup> (number)
<b>Age group (years)</b>				
15 to 20	65.6	20.8	74.5	55,297
21 to 24	66.8	14.0	72.2	38,885
25 to 34	66.4	10.4	70.0	65,936
35 to 49	66.5	8.9	69.9	60,735
50 or more	65.2	6.1	67.9	17,086
<b>Duration on income support (months)<sup>3</sup></b>				
0 to less than 6	67.3	10.6	71.6	77,040
6 to less than 12	61.7	12.1	68.1	15,891
12 to less than 24	55.7	11.1	60.8	14,406
24 to less than 36	56.9	10.3	61.8	12,156
36 or more	47.4	7.3	52.2	18,723
<b>Educational attainment<sup>3</sup></b>				
Less than Year 10	51.8	6.7	56.1	25,680
Year 10 or 11	60.4	8.5	64.4	56,037
Year 12	67.4	12.9	72.6	28,110
Post Secondary	65.8	13.6	71.6	25,689
Unknown	71.8	19.4	80.6	2,700
<b>Gender</b>				
Male	61.7	9.3	65.9	144,085
Female	71.9	15.4	77.3	93,854
<b>Equity groups<sup>3</sup></b>				
Disability	50.5	8.9	56.0	14,830
Indigenous	48.3	7.8	53.9	5,385
Non-English-speaking background	60.3	11.4	65.9	15,113
Sole Parents	57.7	10.6	63.0	4,254
<b>Job Network Eligible (JNE)<sup>4</sup></b>	<b>61.6</b>	<b>10.3</b>	<b>66.4</b>	<b>138,216</b>
<b>Job Matching Only (JMO)<sup>5</sup></b>	<b>73.1</b>	<b>14.4</b>	<b>77.8</b>	<b>99,723</b>
<b>Total</b>	<b>66.2</b>	<b>12.0</b>	<b>70.9</b>	<b>237,939</b>

1. Job Matching outcomes are for job seekers placed in an eligible Job Matching job between 1 July 2000 and 30 June 2001 and outcomes achieved by 30 September 2001. For job seekers who achieved a Job Matching placement within three months of leaving labour market assistance such as apprenticeships and traineeships, Job Search Training, Intensive Assistance and Work for the Dole, the outcome is excluded from Job Matching but included under the programme or service they participated in. Job Matching outcomes are derived from a sample survey of 10% of job seekers placed in Job Matching vacancies.
2. Positive outcomes include employed and education/training outcomes. Positive outcomes are less than the sum of employed and education/training outcomes because some job seekers achieve both an employment and an education outcome. Positive and employment outcomes exclude indigenous job seekers who return to Community Development Employment Projects (CDEP) after leaving labour market assistance.
3. Outcomes refer to Job Network Eligible (JNE) job seekers only as educational attainment and equity group details are not recorded for Job Matching Only (JMO) and JMO job seekers are not on income support. Equity groups are not mutually exclusive.
4. Includes Job Network Eligible (JNE) job seekers who may be eligible for other Job Network services.
5. Includes Job Matching Only (JMO) job seekers who are only eligible for Job Matching services.

Source: The Post Programme Monitoring Survey conducted three months after job seekers cease assistance.

## New Enterprise Incentive Scheme

Table 1.6 shows the post assistance outcomes achieved by those who left the New Enterprise Incentive Scheme (NEIS) in the 12 months up to end June 2001 and outcomes achieved three months later, up to 30 September 2001.

Traditionally NEIS has always experienced higher outcomes compared to other types of labour market assistance. This is due in part to the careful selection of viable businesses by NEIS providers prior to the commencement in assistance, as well as the characteristics of job seekers involved.

**Table 1.6: New Enterprise Incentive Scheme: Post assistance outcomes year to end September 2001<sup>1</sup>**

Job seeker characteristics	Employment			Education & Training (%)	Positive Outcomes <sup>3</sup> (%)	Exits (number)
	Self Employed <sup>2</sup> (%)	Employed (%)	Total Employed (%)			
<b>Age Group (years)</b>						
15 to 20	na	na	na	na	na	na
21 to 24	63.2	19.4	82.6	9.5	86.3	473
25 to 34	72.5	12.0	84.5	7.7	86.6	2,276
35 to 49	72.4	11.2	83.7	7.1	85.6	2,856
50 or more	65.5	9.8	75.3	5.4	76.9	760
<b>Unemployment duration</b>						
0 to less than 6	72.7	12.5	85.2	7.7	87.0	3,094
6 to less than 12	70.3	12.7	82.9	6.6	85.5	1,132
12 to less than 24	71.5	11.6	83.1	6.7	84.7	1,025
24 to less than 36	64.5	10.8	75.3	6.6	78.2	504
36 or more	66.6	8.4	75.0	6.7	76.9	688
<b>Educational attainment</b>						
Less than Year 10	65.5	7.5	73.1	2.9	75.2	510
Year 10 or 11	71.8	10.5	82.3	6.1	84.5	1,737
Year 12	68.7	13.1	81.8	8.0	83.8	1,164
Post Secondary	71.8	12.8	84.7	8.2	86.6	3,029
<b>Gender</b>						
Males	72.2	12.4	84.5	6.0	86.0	3,643
Females	69.1	11.2	80.2	8.6	82.8	2,800
<b>Equity Groups<sup>4</sup></b>						
Disability	68.7	9.9	78.6	8.4	82.0	689
Indigenous	na	na	na	na	na	na
Non-English-speaking background	68.3	11.9	80.2	5.3	81.7	982
Sole Parents	58.5	13.3	71.8	15.6	81.8	252
<b>Total</b>	<b>70.8</b>	<b>11.8</b>	<b>82.6</b>	<b>7.2</b>	<b>84.6</b>	<b>6,443</b>

1. Job seekers who left NEIS placements between 1 July 2000 and 30 June 2001 and outcomes achieved by 30 September 2001.

2. Includes a small proportion of participants who are self employed but in a business not set up under NEIS.

3. Positive outcomes include employed and education/training outcomes. Positive outcomes are less than the sum of employed and education/training outcomes because some job seekers achieve both an employment and an education outcome. Positive and employment outcomes exclude indigenous job seekers who return to Community Development Employment Projects (CDEP) after leaving labour market assistance.

4. Equity groups are not mutually exclusive.

na Not available as the estimate is based on a small number of known outcomes.

Source: The Post Programme Monitoring Survey conducted three months after job seekers cease assistance.

## Work for the Dole

The Work for the Dole (WfD) Programme aims to develop the work habits of participants through involving them in quality projects that are of value to the community. Employment outcomes are not part of the programme's immediate objectives but are included here as they demonstrate the success of work experience and increased job search activity. Outcomes relate to WfD participants referred to Community Workplace Coordinators (CWC).

Job seekers are now required to participate in WfD for up to six months over a twelve month period. This

means that job seekers can participate in a number of projects with different CWC's before completing their placement.

For the purposes of PPM, job seekers are surveyed whenever they have a break between CWC placements of more than 3 months and in relation to their last CWC placement in the twelve month period.

Job seekers aged 35 years or more who participate in Work for the Dole are volunteers.

**Table 1.7: Work for the Dole: Post assistance outcomes year to end September 2001<sup>1</sup>**

Job seeker characteristics	Employment (%)	Education & Training (%)	Positive Outcomes <sup>2</sup> (%)	Exits (number)
<b>Age group (years)</b>				
15 to 20	28.6	16.7	42.0	8,728
21 to 24	27.0	13.0	37.1	12,812
25 to 34	20.6	8.6	27.0	16,227
35 to 49	27.1	6.0	31.6	1,071
50 or more	17.7	5.1	21.1	208
<b>Duration on income support (months)</b>				
0 to less than 6	34.8	15.4	46.2	4,165
6 to less than 12	32.2	15.1	44.1	5,060
12 to less than 24	29.2	12.4	38.3	8,412
24 to less than 36	25.8	14.0	36.8	8,434
36 or more	15.1	7.1	20.8	12,975
<b>Educational attainment</b>				
Less than Year 10	14.0	5.8	19.0	7,770
Year 10 or 11	21.2	7.9	27.9	15,504
Year 12	29.9	16.8	42.4	9,769
Post Secondary	34.0	17.2	46.4	6,002
<b>Gender</b>				
Males	22.6	9.5	30.3	27,445
Females	28.3	15.5	39.8	11,601
<b>Equity groups<sup>3</sup></b>				
Disability	17.2	9.0	24.7	4,912
Indigenous	10.8	10.6	20.5	1,706
Non-English-speaking background	24.1	16.9	38.1	3,427
Sole Parents	6.4	6.7	12.1	705
<b>Total</b>	<b>24.6</b>	<b>11.6</b>	<b>33.5</b>	<b>39,046</b>

1. Job seekers who left a Work for the Dole project between 1 July 2000 and 30 June 2001 and outcomes achieved by 30 September 2001.

2. Positive outcomes include employed and education/training outcomes. Positive outcomes are less than the sum of employed and education/training outcomes because some job seekers achieve both an employment and an education outcome. Positive and employment outcomes exclude indigenous job seekers who return to Community Development Employment Projects (CDEP) after leaving labour market assistance.

3. Equity groups are not mutually exclusive.

Source: The Post Programme Monitoring Survey conducted three months after job seekers cease assistance.

## Section 2: Access to and Participation in Labour Market Assistance

### Type of labour market assistance

Table 2.1 shows the commencements in Job Network services and other types of labour market assistance between the year to end September 2000 and the year to end September 2001. The table also shows the proportion of commencements by job seekers who had been receiving income support [Newstart and Youth Allowance (Other)] for 12 months or more (ie long term unemployed).

In the year to end September 2000, commencements

in Work for the Dole (WfD) are based on individual projects. In the year to end September 2001 commencements are based on new programme requirements including the introduction of Community Work Coordinators (CWCs) and job seekers being required to participate in WfD for up to six months over a twelve month period. This means that job seekers can participate in a number of different WfD projects and with different CWCs before completing their placement. A new commencement is recorded each time a job seeker starts with a CWC.

**Table 2.1: Participation by type of labour market assistance in each of the past two years<sup>1</sup>**

	Year to end September 2000		Year to end September 2001	
	Commencements (number)	Proportion of long term recipients <sup>2</sup> (%)	Commencements (number)	Proportion of long term recipients <sup>2</sup> (%)
<b>Labour market assistance</b>				
Intensive Assistance	313,500	65.6	280,618	54.7
Job Search Training	58,189	19.2	79,123	14.4
Job Matching <sup>3</sup>	293,953	27.4	320,257	24.8
Job Network Eligible (JNE)	211,943	35.9	194,863	35.9
Job Matching Only (JMO)	78,268	na	121,575	na
NEIS	6,649	na	6,113	na
Self Employment Development Scheme	1,295	56.4	1,317	60.5
Work for the Dole	45,305	74.0	59,038	75.1
IEP - STEP	2,628	38.3	4,704	na
IEP - Wage Assistance	1,968	44.0	1,649	na
Community Support Programme	7,921	64.9	20,776	66.9
<b>Return to Work<sup>4</sup></b>	<b>1,716</b>	<b>na</b>	<b>4,014</b>	<b>na</b>

1. Commencement or placement of job seekers in labour market assistance funded by DEWR for the two years of 1 October 1999 to 30 September 2000 and 1 October 2000 to 30 September 2001.

2. The proportion of job seekers who have been registered as unemployed for twelve months or more and have been receiving income support including Newstart, Youth Allowance (Other) or other types of income support.

3. Job Matching total is greater than the sum of JNE and JMO as it includes commencements in apprenticeships and traineeships. Job Network Eligible (JNE) are job seekers who may be eligible for all Job Network services. Job Matching Only (JMO) are job seekers who are only eligible for Job Matching services.

4. Return to Work Programme commenced in February 2000 and many participants are not on income support.

na – not available.

Source: DEWR administrative systems. Community Support Programme commencements provided by Centrelink.

## Access to Job Matching

Access to services and programmes by job seekers with different characteristics will depend on their eligibility and on their assessed capacity to benefit from the assistance provided. To ensure equity of access for job seekers with different characteristics, the proportion in assistance is compared to their proportion of the eligible population.

Job seekers with particular characteristics may be under-represented in some types of assistance but over-represented in others. Hence, it is important to look at all types of assistance in assessing equity of assistance. For example, while indigenous job seekers may be under-represented in some types of assistance, other more specific programmes are directed towards addressing their particular needs.

Table 2.2 shows, for a range of job seeker characteristics for Job Network Eligible job seekers, the proportion that were eligible for services on 30 September 2001 and the proportion that received a placement under Job Matching in the year to end September 2001. For example, 31% of those on all income support types for less than six months accounted for nearly half of all Job Matching placements during this time period.

This is shown for all income support types and separately for those on the activity tested payments Newstart and Youth Allowance (Other). All income support types include some job seekers who are not subject to the activity test and volunteer to participate in Job Network services.

**Table 2.2: Access to Job Matching by JNE job seeker characteristics year to end September 2001<sup>1</sup>**

Job seeker characteristics	All income support types		Newstart/Youth Allowance (Other)	
	Eligibility for Job Matching <sup>2</sup> (%)	Placement in Job Matching <sup>2</sup> (%)	Eligibility for Job Matching <sup>3</sup> (%)	Placement in Job Matching <sup>3</sup> (%)
<b>Age group (years)</b>				
15 to 20	18.0	26.0	12.7	19.3
21 to 24	14.2	16.9	15.5	18.1
25 to 34	24.9	26.5	26.7	28.5
35 to 49	28.1	23.6	29.7	25.5
50 or more	14.8	7.0	15.4	7.9
Total	100.0	100.0	100.0	100.0
<b>Duration on income support (months)</b>				
0 to less than 6	30.5	47.6	30.3	41.4
6 to less than 12	17.1	16.3	15.8	17.4
12 to less than 24	15.9	12.5	15.4	13.7
24 to less than 36	9.6	7.3	9.6	8.3
36 or more	27.0	16.3	29.0	19.2
Total	100.0	100.0	100.0	100.0
<b>Educational attainment</b>				
Less than Year 10	24.7	21.5	25.0	20.0
Year 10 or 11	37.5	40.7	37.1	41.8
Year 12	18.7	21.2	17.8	20.5
Post secondary	19.1	16.6	20.1	17.7
Total	100.0	100.0	100.0	100.0
<b>Gender</b>				
Male	66.8	65.9	69.6	68.4
Female	33.2	34.1	30.4	31.6
Total	100.0	100.0	100.0	100.0
<b>Equity groups<sup>4</sup></b>				
Disability	19.4	9.7	19.4	10.4
Indigenous	6.0	3.8	6.0	3.9
Non-English-speaking background	14.5	10.1	15.1	10.9
Sole parents	2.5	1.6	na	na

1. Placements in Job Matching vacancies between 1 October 2000 and 30 September 2001.

2. Includes job seekers registered with Centrelink as unemployed and in receipt of the activity tested allowances Newstart and Youth Allowance (Other) or other types of income support payments not subject to activity test requirements at 30 September 2001.

3. Job seekers in receipt of Newstart and Youth Allowance (Other) at 30 September 2001.

4. Equity groups are not mutually exclusive.

na – not applicable

Source: DEWR administrative systems.

## Access to Job Search Training

Table 2.3 shows, for a range of job seeker characteristics, the proportion of the population that were eligible for Job Search Training compared to the proportion commencing Job Search Training. This is shown for all income support categories and separately for those on the activity tested payments Newstart and Youth Allowance (Other).

All income support types include job seekers who are not subject to the activity test and volunteer to participate in Job Network services.

Only those job seekers assessed as eligible for Job Search Training under the Job Seeker Classification Instrument (JSCI) have been included in the eligible population.

Over 53% of those on all income support types for less than six months accounted for nearly 64% of all Job Search Training commencements in the year to end September 2001.

**Table 2.3: Access to Job Search Training by job seeker characteristics year to end September 2001<sup>1</sup>**

Job seeker characteristics	All income support categories		Newstart/Youth Allowance (Other)	
	Eligibility for Job Search Training <sup>2</sup> (%)	Commencement in Job Search Training <sup>2</sup> (%)	Eligibility for Job Search Training <sup>3</sup> (%)	Commencement in Job Search Training <sup>3</sup> (%)
<b>Age group (years)</b>				
15 to 20	27.0	15.8	17.4	14.7
21 to 24	19.7	18.8	22.8	19.1
25 to 34	26.7	31.1	30.4	31.7
35 to 49	20.9	27.0	23.2	27.1
50 or more	5.7	7.4	6.3	7.4
Total	100.0	100.0	100.0	100.0
<b>Duration on income support (months)</b>				
0 to less than 6	53.3	63.6	55.2	63.6
6 to less than 12	23.8	22.0	22.0	22.0
12 to less than 24	14.9	9.4	14.5	9.4
24 to less than 36	4.6	3.2	4.6	3.2
36 or more	3.4	1.8	3.7	1.8
Total	100.0	100.0	100.0	100.0
<b>Educational attainment</b>				
Less than Year 10	8.8	1.9	8.8	1.9
Year 10 or 11	34.0	35.3	33.2	35.1
Year 12	27.5	26.6	25.4	26.3
Post secondary	29.6	36.3	32.6	36.7
Total	100.0	100.0	100.0	100.0
<b>Gender</b>				
Male	66.8	69.4	67.4	70.1
Female	33.2	30.6	32.6	29.9
Total	100.0	100.0	100.0	100.0
<b>Equity groups<sup>4</sup></b>				
Disability	7.1	5.0	7.6	5.1
Indigenous	0.9	0.8	0.9	0.8
Non-English-speaking background	7.5	10.6	7.9	10.6
Sole parents	2.4	0.7	na	na

1. Commencement of job seekers in Job Search Training between 1 October 2000 and 30 September 2001.

2. Includes job seekers registered with Centrelink as unemployed and in receipt of the activity tested allowances Newstart and Youth Allowance (Other) or other types of income support payments not subject to activity test requirements at 30 September 2001.

3. Job seekers in receipt of Newstart and Youth Allowance (Other) at 30 September 2001.

4. Equity groups are not mutually exclusive.

na – not applicable

Source: DEWR administrative systems.

## Access to Intensive Assistance

Table 2.4 shows, for a range of job seeker characteristics, the proportion of the population eligible for Intensive Assistance compared with the proportion commencing Intensive Assistance. This is shown for all income support categories and separately for those on the activity tested payments Newstart and Youth Allowance (Other).

Those on income support include job seekers who are not subject to the activity test and volunteer to participate in Job Network services.

As with Job Search Training, only those assessed as eligible for Intensive Assistance under the Job Seeker

Classification Instrument (JSCI) have been included in the eligible population.

For example, 15% of all income support types of less than six months accounted for nearly 34% of all Intensive Assistance commencements in the year to end September 2001.

Job seekers assessed as having higher levels of disadvantage may be under-represented in Intensive Assistance but are able to access the Community Support Programme and programmes administered by the Department of Family and Community Services for people with disabilities. This is reflected in the lower levels of access of job seekers with a disability and those in receipt of income support for 3 years or more.

**Table 2.4: Access to Intensive Assistance by job seeker characteristics year to end September 2001<sup>1</sup>**

Job seeker characteristics	All income support categories		Newstart/Youth Allowance (Other)	
	Eligibility for Intensive Assistance <sup>2</sup> (%)	Commencement in Intensive Assistance <sup>2</sup> (%)	Eligibility for Intensive Assistance <sup>3</sup> (%)	Commencement in Intensive Assistance <sup>3</sup> (%)
<b>Age group (years)</b>				
15 to 20	12.9	12.9	10.4	12.3
21 to 24	11.2	11.8	11.8	11.9
25 to 34	23.8	24.7	24.6	24.8
35 to 49	32.0	33.1	32.8	33.1
50 or more	20.0	17.6	20.5	17.9
Total	100.0	100.0	100.0	100.0
<b>Duration on income support (months)</b>				
0 to less than 6	14.9	33.8	14.3	32.4
6 to less than 12	12.4	11.5	11.8	11.5
12 to less than 24	16.4	13.2	16.0	13.4
24 to less than 36	13.1	10.6	12.9	10.8
36 or more	43.1	30.8	45.0	31.9
Total	100.0	100.0	100.0	100.0
<b>Educational attainment</b>				
Less than Year 10	34.1	30.1	34.2	30.2
Year 10 or 11	40.3	41.8	39.8	41.6
Year 12	13.5	15.1	13.6	15.1
Post secondary	12.1	13.0	12.4	13.1
Total	100.0	100.0	100.0	100.0
<b>Gender</b>				
Male	68.7	67.8	71.1	71.9
Female	31.3	32.2	28.9	28.1
Total	100.0	100.0	100.0	100.0
<b>Equity groups<sup>4</sup></b>				
Disability	20.2	14.0	20.6	14.0
Indigenous	8.6	7.4	8.2	7.2
Non-English-speaking background	18.9	20.2	19.2	20.2
Sole parents	2.4	1.5	na	na

1. Commencement of job seekers in Intensive Assistance between 1 October 2000 and 30 September 2001.

2. Includes job seekers registered with Centrelink as unemployed and in receipt of the activity tested allowances Newstart and Youth Allowance (Other) or other types of income support payments not subject to activity test requirements at 30 September 2001.

3. Job seekers in receipt of Newstart and Youth Allowance (Other) at 30 September 2001.

4. Equity groups are not mutually exclusive.  
na – not applicable

Source: DEWR administrative systems.

## Participation in Work for the Dole

Table 2.5 shows, for a range of job seeker characteristics, the proportion in the eligible population and the proportion commencing Work for the Dole. This is shown only for those on the activity tested payments Newstart and Youth Allowance (Other).

Job seekers aged 35 years or more on Newstart Allowance may volunteer to participate in Work for

the Dole.

Job seekers are required to participate in WfD for up to six months over a twelve month period. This means that job seekers can participate in a number of different WfD projects and with different CWCs before completing their placement. Each time a job seeker starts with a CWC, a new commencement is recorded

**Table 2.5: Access to Work for the Dole by job seeker characteristics year to end September 2001<sup>1</sup>**

Job seeker characteristics	Eligibility for Work for Dole <sup>2</sup> (%)	Commencement in Work for the Dole (%)
<b>Age group (years)</b>		
15 to 20	14.2	23.2
21 to 24	15.8	34.4
25 to 34	25.8	39.0
35 to 49	28.8	2.6
50 or more	15.4	0.9
Total	100.0	100.0
<b>Duration on income support (months)</b>		
0 to less than 6	30.0	9.6
6 to less than 12	18.5	15.2
12 to less than 24	16.4	24.3
24 to less than 36	8.3	17.1
36 or more	26.9	33.7
Total	100.0	100.0
<b>Educational attainment</b>		
Less than Year 10	24.4	18.3
Year 10 or 11	37.0	39.1
Year 12	18.6	27.7
Post secondary	20.0	14.9
Total	100.0	100.0
<b>Gender</b>		
Male	69.1	71.4
Female	30.9	28.6
Total	100.0	100.0
<b>Equity groups<sup>3</sup></b>		
Disability	20.0	10.7
Indigenous	6.1	3.2
Non-English-speaking background	15.4	7.5
Sole parents	na	na

1. Commencement of job seekers in Work for the Dole between 1 October 2000 and 30 September 2001.

2. Job seekers receiving Newstart and Youth Allowance (Other) as at 30 September 2001.

3. Equity groups are not mutually exclusive.

na – not applicable.

Source: DEWR administrative systems.

## Section 3: Participation and Outcomes by Region

### Participation in labour market assistance by region

This section presents data on participation by job seekers in labour market assistance for the DEWR Labour Market Regions used during the second contract period for Job Network. A map of DEWR regions is included in the Technical Notes of this report.

Reporting at a regional level is restricted to the main types of Job Network assistance and Work for the Dole.

Table 3.1 provides details of placements in Job Matching jobs and commencements in Job Search Training, Intensive Assistance and Work for the Dole.

The number of placements and commencements in the various types of labour market assistance will depend on the size of the region, labour market conditions and the relative disadvantage of job seekers in the region.

**Table 3.1: Commencements in labour market assistance by region year to end September 2001<sup>1</sup>**

DEWR Region	Job Matching (JNE) <sup>2</sup> (Number)	Job Search Training (Number)	Intensive Assistance (Number)	Work for the Dole (Number)
Sydney	23,871	15,250	44,423	7,224
Hunter and North Coast	10,622	4,743	24,996	3,927
Illawarra and SE NSW	5,179	2,622	7,848	2,051
Western NSW	8,968	1,948	7,911	1,732
Riverina	3,417	887	3,097	674
<b>New South Wales</b>	<b>52,057</b>	<b>25,450</b>	<b>88,275</b>	<b>15,608</b>
Melbourne	28,223	12,634	42,673	10,092
Eastern Victoria	7,327	1,867	8,472	1,411
Western Victoria	10,784	3,224	14,682	2,063
<b>Victoria</b>	<b>46,334</b>	<b>17,725</b>	<b>65,827</b>	<b>13,566</b>
Brisbane	29,393	12,526	35,211	11,114
Southern Queensland	9,166	2,045	10,438	954
Central and Northern QLD	13,620	3,970	13,843	3,050
<b>Queensland</b>	<b>52,179</b>	<b>18,541</b>	<b>59,492</b>	<b>15,118</b>
Perth	10,708	6,105	17,244	4,227
South Western Australia	2,816	862	3,397	1,236
Greater Western Australia	2,092	511	3,286	475
<b>Western Australia</b>	<b>15,616</b>	<b>7,478</b>	<b>23,927</b>	<b>5,938</b>
Adelaide	12,006	4,701	19,069	4,396
South Australia Country	7,362	1,261	7,498	1,872
<b>South Australia</b>	<b>19,368</b>	<b>5,962</b>	<b>26,567</b>	<b>6,268</b>
<b>Tasmania</b>	<b>5,473</b>	<b>2,073</b>	<b>11,423</b>	<b>1,399</b>
<b>Northern Territory</b>	<b>2,277</b>	<b>632</b>	<b>2,530</b>	<b>356</b>
<b>Australian Capital Territory</b>	<b>1,559</b>	<b>1,262</b>	<b>2,577</b>	<b>785</b>
<b>Australia</b>	<b>194,863</b>	<b>79,123</b>	<b>280,618</b>	<b>59,038</b>

1. Commencement or placement in labour market assistance between 1 October 2000 and 30 September 2001.

2. Job Matching for JNE job seeker placements are included while JMO job seeker placements have been excluded.

Source: DEWR administrative systems.

## Job Matching placements by region

Table 3.2 shows the number of vacancies notified on the Australian Job Search (AJS) database for the month of September 2001 by DEWR region, State and Territory and nationally.

In addition to the 66,059 new vacancies lodged on the AJS, some vacancies lodged in the preceding month remained active during September.

In total, Job Network members listed over 753,899 job vacancies on the Australian Job Search database in the year to end September 2001.

Also shown are Job Matching placements for both Job Network eligible (JNE) and Job Matching only (JMO) job seekers in each region in the year to end September 2001. JMOs accounted for over one-third of all Job Matching placements.

**Table 3.2: Job Matching placements by region year to end September 2001**

DEWR Region	Vacancies notified on AJS in June 2001 <sup>1</sup> (Number)	Job Matching <sup>2</sup> (number)			Share of placements filled by JMO clients (%)
		JNE <sup>3</sup>	JMO <sup>4</sup>	Total <sup>5</sup>	
Sydney	13,252	23,871	15,806	39,933	39.6
Hunter and North Coast	3,290	10,622	4,704	15,612	30.1
Illawarra and SE NSW	1,579	5,179	3,169	8,466	37.4
Western NSW	2,256	8,968	8,037	17,179	46.8
Riverina	885	3,417	3,136	6,685	46.9
<b>New South Wales</b>	<b>21,262</b>	<b>52,057</b>	<b>34,852</b>	<b>87,875</b>	<b>39.7</b>
Melbourne	10,198	28,223	15,220	44,152	34.5
Eastern Victoria	1,803	7,327	5,688	13,127	43.3
Western Victoria	2,833	10,784	6,965	18,069	38.5
<b>Victoria</b>	<b>14,834</b>	<b>46,334</b>	<b>27,873</b>	<b>75,348</b>	<b>37.0</b>
Brisbane	10,743	29,393	17,274	47,113	36.7
Southern Queensland	2,312	9,166	5,941	15,253	38.9
Central and Northern QLD	4,256	13,620	10,527	24,268	43.4
<b>Queensland</b>	<b>17,311</b>	<b>52,179</b>	<b>33,742</b>	<b>86,634</b>	<b>38.9</b>
Perth	3,891	10,708	5,481	16,304	33.6
South Western Australia	720	2,816	2,237	5,101	43.9
Greater Western Australia	1,040	2,092	3,083	5,188	59.4
<b>Western Australia</b>	<b>5,651</b>	<b>15,616</b>	<b>10,801</b>	<b>26,593</b>	<b>40.6</b>
Adelaide	2,950	12,006	4,590	17,047	26.9
South Australia Country	1,318	7,362	4,537	12,042	37.7
<b>South Australia</b>	<b>4,268</b>	<b>19,368</b>	<b>9,127</b>	<b>29,089</b>	<b>31.4</b>
<b>Tasmania</b>	<b>1,165</b>	<b>5,473</b>	<b>2,380</b>	<b>8,015</b>	<b>29.7</b>
<b>Northern Territory</b>	<b>980</b>	<b>2,277</b>	<b>1,966</b>	<b>4,256</b>	<b>46.2</b>
<b>Australian Capital Territory</b>	<b>588</b>	<b>1,559</b>	<b>834</b>	<b>2,447</b>	<b>34.1</b>
<b>Australia</b>	<b>66,059</b>	<b>194,863</b>	<b>121,575</b>	<b>320,257</b>	<b>38.0</b>

1. Vacancies notified on the Australian Job Search database for the month of September 2001.

2. Placements in eligible Job Matching vacancies between 1 October 2000 and 30 September 2001.

3. Job Network Eligible (JNE) job seekers who may be eligible for all Job Network services.

4. Job Matching Only (JMO) are job seekers who are eligible only for Job Matching services.

5. Total is greater than the sum of JNE and JMO placements as this figure includes apprenticeships and traineeships.

Source: DEWR administrative systems.

## Labour market assistance by region

Table 3.3 shows the proportion of Newstart and Youth Allowance (Other) recipients as at September 2001 compared to the proportion of Job Matching job placements for Job Network eligible job seekers and

commencements in Job Search Training, Intensive Assistance and Work for the Dole. This is provided on a DEWR regional and State and Territory basis.

**Table 3.3: Comparison of labour market assistance by region year to end September 2001<sup>1</sup>**

DEWR Region	Newstart/ Youth Allowance (Other) recipients <sup>2</sup> (%)	Job Matching (JNE) <sup>3</sup> (%)	Job Search Training (%)	Intensive Assistance (%)	Work for the Dole (%)
Sydney	14.6	12.3	19.3	15.8	12.2
Hunter and North Coast	8.1	5.5	6.0	8.9	6.7
Illawarra and SE NSW	3.2	2.7	3.3	2.8	3.5
Western NSW	3.0	4.6	2.5	2.8	2.9
Riverina	1.1	1.8	1.1	1.1	1.1
<b>New South Wales</b>	<b>30.1</b>	<b>26.7</b>	<b>32.2</b>	<b>31.5</b>	<b>26.4</b>
Melbourne	15.7	14.5	16.0	15.2	17.1
Eastern Victoria	2.5	3.8	2.4	3.0	2.4
Western Victoria	4.2	5.5	4.1	5.2	3.5
<b>Victoria</b>	<b>22.3</b>	<b>23.8</b>	<b>22.4</b>	<b>23.5</b>	<b>23.0</b>
Brisbane	13.9	15.1	15.8	12.5	18.8
Southern Queensland	3.1	4.7	2.6	3.7	1.6
Central and Northern QLD	5.0	7.0	5.0	4.9	5.2
<b>Queensland</b>	<b>21.9</b>	<b>26.8</b>	<b>23.4</b>	<b>21.2</b>	<b>25.6</b>
Perth	7.2	5.5	7.7	6.1	7.2
South Western Australia	1.5	1.4	1.1	1.2	2.1
Greater Western Australia	1.4	1.1	0.6	1.2	0.8
<b>Western Australia</b>	<b>10.2</b>	<b>8.0</b>	<b>9.5</b>	<b>8.5</b>	<b>10.1</b>
Adelaide	6.4	6.2	5.9	6.8	7.4
South Australia Country	2.4	3.8	1.6	2.7	3.2
<b>South Australia</b>	<b>8.8</b>	<b>9.9</b>	<b>7.5</b>	<b>9.5</b>	<b>10.6</b>
<b>Tasmania</b>	<b>3.7</b>	<b>2.8</b>	<b>2.6</b>	<b>4.1</b>	<b>2.4</b>
<b>Northern Territory</b>	<b>2.1</b>	<b>1.2</b>	<b>0.8</b>	<b>0.9</b>	<b>0.6</b>
<b>Australian Capital Territory</b>	<b>1.0</b>	<b>0.8</b>	<b>1.6</b>	<b>0.9</b>	<b>1.3</b>
<b>Australia</b>	<b>100.0</b>	<b>100.0</b>	<b>100.0</b>	<b>100.0</b>	<b>100.0</b>

1. Commencement or placement of job seekers in labour market assistance between 1 October 2000 and 30 September 2001.

2. Job Seekers receiving Newstart or Youth Allowance (Other) as at 30 September 2001.

3. Includes Job Network Eligible (JNE) job seekers who may be eligible for all Job Network services and excludes Job Matching Only (JMO) job seekers who are only eligible for Job Matching services.

Source: DEWR administrative systems.

## Employment outcomes by region

Table 3.4 shows unsubsidised employment outcomes for job seekers who ceased assistance between 1 July 2000 and 30 June 2001 and outcomes achieved by 30 September 2001. Employment outcomes are for Job Matching, Job Search Training, Intensive Assistance and Work for the Dole.

Job Matching includes Job Network Eligible and Job Matching Only job seekers. Outcomes are presented on a DEWR regional, State and Territory and national basis.

**Table 3.4: Regional labour market post assistance employment outcomes year to end September 2001<sup>1</sup>**

DEWR Region	Job Matching (%) <sup>2</sup>	Job Search Training <sup>3</sup> (%)	Intensive Assistance <sup>3</sup> (%)	Work for the Dole <sup>3</sup> (%)
Sydney	65.4	39.9	36.9	23.8
Hunter and North Coast	65.3	36.7	36.0	18.5
Illawarra and SE NSW	71.0	45.2	35.5	20.6
Western NSW	66.5	37.9	32.9	23.5
Riverina	65.3	44.3	34.5	22.1
<b>New South Wales</b>	<b>66.2</b>	<b>39.8</b>	<b>36.3</b>	<b>21.8</b>
Melbourne	65.5	40.8	41.1	28.3
Eastern Victoria	64.9	42.9	39.8	26.2
Western Victoria	68.7	46.4	44.3	21.0
<b>Victoria</b>	<b>66.2</b>	<b>42.1</b>	<b>41.7</b>	<b>26.6</b>
Brisbane	67.3	40.3	40.5	27.6
Southern Queensland	69.5	44.9	37.2	23.8
Central and Northern QLD	67.7	45.6	39.1	24.7
<b>Queensland</b>	<b>67.8</b>	<b>41.9</b>	<b>39.6</b>	<b>26.5</b>
Perth	68.0	40.7	41.6	23.1
South Western Australia	60.8	38.3	40.7	25.8
Greater Western Australia	62.2	47.9	31.0	26.2
<b>Western Australia</b>	<b>65.9</b>	<b>40.9</b>	<b>40.0</b>	<b>23.9</b>
Adelaide	62.8	42.7	40.4	24.1
South Australia Country	62.0	42.5	40.9	25.2
<b>South Australia</b>	<b>62.5</b>	<b>42.7</b>	<b>40.6</b>	<b>24.3</b>
<b>Tasmania</b>	<b>63.3</b>	<b>40.9</b>	<b>41.0</b>	<b>15.0</b>
<b>Northern Territory</b>	<b>56.5</b>	<b>44.9</b>	<b>30.1</b>	<b>15.5</b>
<b>Australian Capital Territory</b>	<b>82.1</b>	<b>51.0</b>	<b>38.8</b>	<b>29.1</b>
<b>Australia</b>	<b>66.2</b>	<b>41.4</b>	<b>39.2</b>	<b>24.6</b>

1. Employment outcomes exclude indigenous job seekers who return to a Community Development Employment Projects (CDEP) after leaving labour market assistance.
2. Job Matching outcomes are for job seekers placed in an eligible Job Matching job between 1 July 2000 and 30 June 2001 and outcomes achieved by 30 September 2001. For job seekers who achieved a Job Matching placement within three months of leaving labour market assistance such as Job Search Training, Intensive Assistance and Work for the Dole, the outcome is excluded from Job Matching but included under the programme or service they participated in. Outcomes for apprenticeships and traineeships are excluded.
3. Post assistance employment outcomes relate to job seekers who ceased Intensive Assistance, Job Search Training or Work for the Dole between 1 July 2000 and 30 June 2001 and outcomes achieved by 30 September 2001.

Source: The Post Programme Monitoring Survey conducted three months after job seekers cease assistance.

## Section 4: Impact on Income Support Recipients

### Number of income support recipients

An important goal of employment assistance is to reduce or remove employment barriers experienced by job seekers so they can compete effectively for jobs. Higher levels of employment assistance are provided to the most disadvantaged job seekers.

While this report focuses mainly on the outcomes achieved by individual forms of assistance, it is also important to note that other factors, such as administrative changes and economic conditions, also have a significant impact on the number of income support recipients.

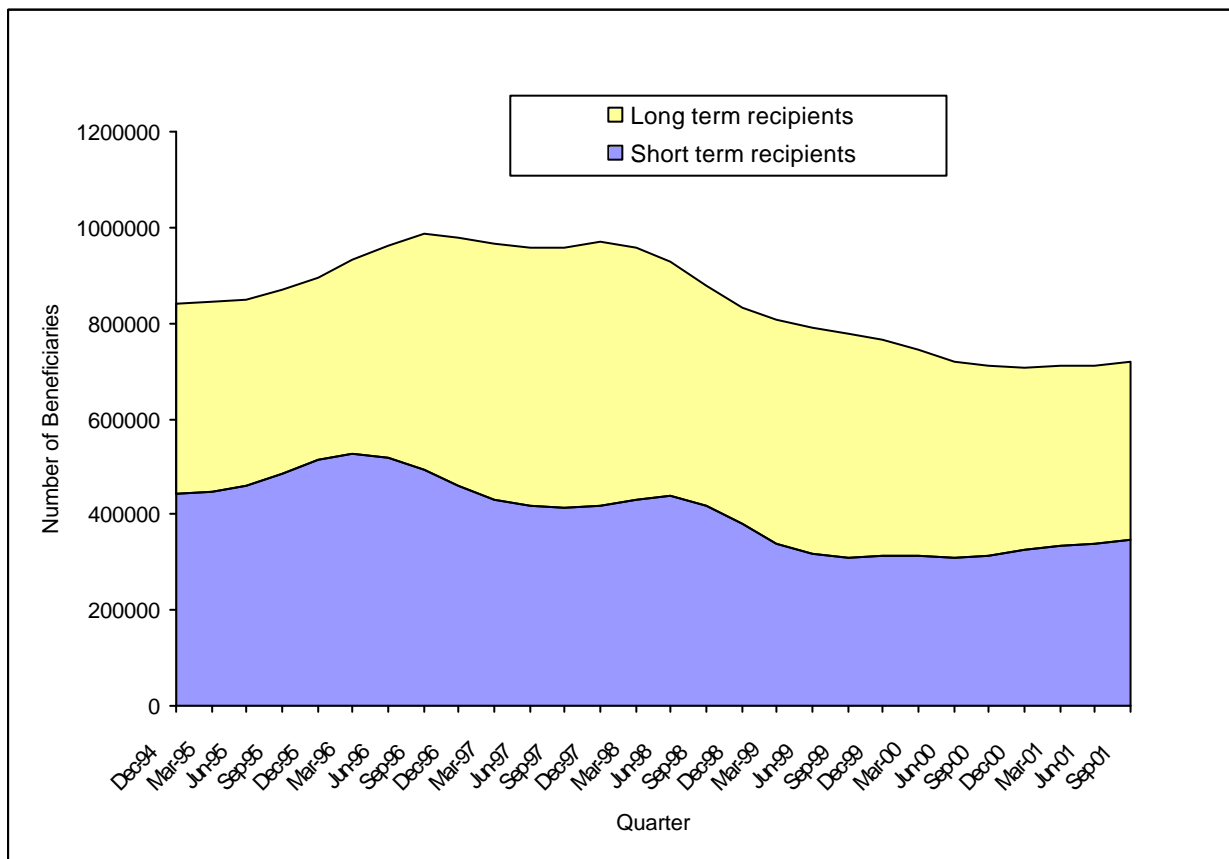
Figure 4.1 shows the changes over time in the number of short and long term income support recipients. Many long term recipients (in receipt of Newstart and Youth Allowance (Other) for 12 months or more) will have had a job at some time

over the last 12 months. These job seekers are reclassified as short term recipients only if they remain totally off benefits for a continuous period of more than 13 weeks.

Hence, long term recipients should not be confused with the long term unemployed as defined by the Australian Bureau of Statistics. The long term unemployed are people currently looking for work who have not had a job that lasted for 2 weeks or more in the last year.

Data from the Department of Family and Community Services show that in the 12 months to the end of September 2001, the number of people in receipt of Newstart or Youth Allowance (Other) increased by over 15,000 to around 652,500 job seekers. While the number of job seekers who were long term recipients decreased by nearly 18,000 the number of short term recipients increased by over 33,000.

**Figure 4.1: Number of Income Support Recipients<sup>1</sup>**



Source: Trend series based on data from DEWR administrative system.

- Figures quoted in the text are from the Department of Family and Community Services: "Labour Market and Related Payments a monthly profile, September 2001".

## Technical Notes

### Data sources

The Department uses a number of data sources to determine the outcomes achieved by job seekers during and after they have ceased labour market assistance.

*Post Programme Monitoring (PPM) surveys* have been undertaken since 1987 and used to assess the employment and education status of former programme participants three months after they exit assistance. The PPM survey attempts a full enumeration of all former programme participants except in the case of Job Matching where a sample of around 10% of job placements are followed up. Job seekers who leave employment assistance and then proceed to another employment assistance place before selection in the PPM survey, are excluded from the survey. For monitoring purposes these job seekers are considered to be in further assistance.

The overall response rate for the PPM survey, at around 60%, provides outcomes estimates that are generally accurate to within plus or minus 1 percentage point at the National level.

DEWR administrative systems record details of placements, commencements and paid outcomes for labour market assistance.

The PPM outcomes for Intensive Assistance are derived from two sources - DEWR administrative systems and the PPM survey. The administrative system provides information on the primary and secondary paid interim outcomes for job seekers three months after their placement into a job. The PPM survey provides the employment and training status of job seekers three months after they exited assistance without having achieved a paid interim outcome. The addition of the paid interim and PPM survey outcomes data for unpaid exits provides the labour force status for participants at the three month point in time and is comparable to measurements for other types of employment assistance.

### Post Programme Monitoring Outcomes

#### PPM Measures of Outcomes

Table A below provides a summary of PPM Outcomes under current employment assistance (Job Network), mutual obligation arrangements (Work for the Dole) and a range of previous labour market programmes that operated in the mid-1990s (under the *Working Nation* banner). There are three measures of Outcomes rates:

- *employment* (the proportion of participants who achieved an employment outcome compared to all those who left assistance);
- *education and/or training* (the proportion of participants who achieved an education and/or training outcome compared to all those who left assistance); and
- *'positive' outcomes* (the proportion of participants who achieved an employment or education and training outcome compared to all those who left assistance).

#### Methodology for Measuring Outcomes Rates

In calculating PPM outcomes rates, a decision has to be made about the treatment of those participants who left the programme and went on to further assistance: whether they are included or excluded from the measure of outcomes:

- under past PPM methodology, this group was *excluded* from the measure. It is evident, however, that this resulted in higher outcomes rates when there was a high rate of churning between programmes (as reflected in the figures for "Further Assistance" in Table A);
- an improved methodology has been adopted that *includes* all participants who went on to further assistance. This provides a more comprehensive picture of what has happened to all participants in programmes.
  - this methodology is consistent with how the *cost per employment outcome* from programmes has always been measured in the Department's evaluations of labour market programmes.

Measures provided under the new methodology are set out in the final three right-hand columns of Table A. The previous estimates, based on the old method, are in the left-hand columns for comparative purposes only.

**Table A: PPM Outcomes (3 months) (%): Old and New Methods**

	Old Method			Further Assistance	New Method		
	Employment outcomes	Education & Training Outcomes	Positive Outcomes <sup>1</sup>		Employment outcomes	Education & Training Outcomes	Positive Outcomes <sup>2</sup>
<b>Job Network<sup>3</sup></b>							
Job Search Training	40.0	13.2	48.9	5.3	37.9	12.5	46.3
Intensive Assistance	35.9	7.9	42.4	2.6	35.0	7.7	41.3
NEIS	81.8	8.9	84.1	0.0	81.8	8.9	84.1
<b>Work for the Dole<sup>3</sup></b>	32.9	13.3	42.8	16.6	27.4	11.1	35.7
<b>Working Nation<sup>4</sup></b>							
Job Clubs	36.4	10.8	43.8	31.7	24.9	7.4	29.9
<b>Working Nation<sup>5</sup></b>	35.1	12.4	44.3	22.0	27.4	9.7	34.6
Job Skills	31.9	8.9	37.8	11.7	28.1	7.8	33.4
JobTrain	33.7	12.3	42.7	30.0	23.6	8.6	29.9
JobStart	52.8	6.4	56.3	8.5	48.3	5.9	51.5
LEAP	25.8	10.3	33.7	13.1	22.4	8.9	29.3
New Work Opportunities	21.0	5.2	24.8	14.8	17.9	4.4	21.1
SkillShare	36.9	14.0	47.0	17.8	30.3	11.5	38.6
Special Intervention	21.4	20.7	39.4	38.7	13.1	12.7	24.2

1. The proportion of participants that achieved an employment and/or education/ training outcome *excluding* those who went onto further assistance.

2. The proportion of participants that achieved an employment and/or education/ training outcome *including* those who went onto further assistance.

3. Outcomes achieved in the 1999-2000 financial year.

4. This relates to the Working Nation programme, Job Clubs, which is similar to Job Search Training: outcomes for 1995-96 financial year.

5. Working Nation programmes replaced by Intensive Assistance: outcomes are for 1995-96 financial year. The results show the weighted average for the seven programmes and for each programme

Source: The Post Programme Monitoring Survey conducted 3 months after job seekers cease assistance and DEWR administrative systems.

## Labour Market Assistance

*Intensive Assistance:* provides individually tailored assistance for up to two years to eligible job seekers who are more disadvantaged in the labour market, to prepare for, and obtain, sustainable employment. The level of funding is based on the job seekers' level of disadvantage. There are two funding levels, A and B.

Job seekers who transferred to a new provider as a result of the second contract period are treated as a new commencement but as the job seekers period of assistance has not been completed, they are included in the PPM survey.

*Job Search Training:* provides training for three weeks in job search techniques (such as résumé preparation, interview techniques and presentation skills) to give unemployed people the skills and confidence to seek and obtain employment.

*Job Matching:* delivers labour exchange services to job seekers including canvassing for jobs and matching and placing suitable unemployed people to these jobs, as well as preparing résumés for job seekers.

*New Enterprise Incentive Scheme (NEIS):* provides support and training for eligible job seekers who wish to pursue the option of self-employment.

*Work for the Dole:* provides assistance for job seekers to develop work habits, generic work skills and gain work experience by participating in community projects and activities for up to 26 weeks over a 12 month period.

*Indigenous Employment Programme:* replaced the Training for Aboriginals and Torres Strait Islanders Programme (TAP) and has several components. It includes Wage Assistance which is a wage subsidy paid to employers over 26 weeks providing on-going employment. In Structured Training and Employment Projects (STEP) employers in the private sector and regional and community based employment sponsor organisations provide at least 5 jobs, generally involving accredited training, usually a traineeship, to participants for a minimum period of 12 months.

*Community Support Programme:* helps disadvantaged job seekers access counselling, stable accommodation, alcohol or drug rehabilitation and other activities addressing significant needs. Participation is voluntary and assistance can be for up to two years.

*Return to Work Programme:* helps job seekers who have been absent for two years or more due to

unpaid caring responsibilities increase their skills and confidence so they can re-enter the work force.

*Self-Employment Development Scheme (SEDS):* allow job seekers to undertake approved activities to develop self-employment opportunities for three months. The business viability is assessed by a NEIS Managing agent and approved by Centrelink.

## Definitions

*Australian Job Search:* Lists all vacancies notified to the Job Network and provides information on Job Network members. Is available in Centrelink and Job Network member offices and the DEWR Internet site.

*Community Development Employment Projects (CDEP):* administered by the Aboriginal and Torres Strait Islander Commission - a scheme generally providing opportunities for part time work paid at the equivalent of unemployment allowances to residents of indigenous communities in remote locations. Positive and employment outcomes exclude indigenous job seekers who return to a CDEP after leaving labour market assistance.

*Community Work Coordinators:* are contracted to develop Work for the Dole projects/activities and manage the placement of eligible job seekers into those projects/activities.

*Educational attainment:* refers to the highest educational level completed by job seekers. If a job seeker did not complete Year 12 then they will be included in the Year 10 category.

*Eligible vacancy:* is a job vacancy listed on the Australian Job Search database that are eligible for a payment under Job Matching.

*Further Assistance:* includes job seekers who proceed to another DEWR or DEST funded employment assistance within three months of exiting other employment assistance. It includes commencements in Job Search Training, Intensive Assistance, New Apprenticeships, NEIS, Work for the Dole, Green Corps, Advanced English for Migrants Programme (AEMP) and IEP - STEP and IEP - Wage Assistance. Job Matching is not regarded as further assistance.

*Income support recipients:* includes job seekers registered with Centrelink as unemployed and in receipt of Newstart Allowance (NSA) or job seekers aged 15 to 24 not in full-time education and in receipt of Youth Allowance (YA).

*Job Matching Only (JMO):* Job seekers, irrespective of income support who are eligible for Job Matching Only services but not eligible for other Job Network services. JMOs can renew their registration as unemployed every three months with either Centrelink or Job Network members.

*Job Matching placements:* include placements provided under Job Matching and job placements under Intensive Assistance.

*Job Network Eligible (JNE):* Job seekers who are receiving income support payments, and young people not in full-time study irrespective of income support. CDEP participants are eligible for Job Matching services. These people may be eligible for other Job Network services, subject to eligibility requirements.

*Job Seeker Classification Instrument (JSCI):* a measurement of a job seeker's relative disadvantage in obtaining employment and is used to determine the level of labour market assistance required.

*Long term recipients:* Job seekers who have been registered with Centrelink as unemployed for 12 months or more and receiving income support.

*NESB:* migrants from a Non-English-speaking background.

*Outcomes qualifying for a claim for payment:* Intensive Assistance or Job Search Training outcomes where the conditions for a claim for a paid outcome have been met. An actual claim may or may not have been made. This has not been included in this report.

*Placed, awaiting an outcome:* Placement of an Intensive Assistance or Job Search Training job seeker in employment or study but where the 13 week paid outcome mark has yet to be reached. This has not been included in this report.

*Paid Interim Outcomes:* Intensive Assistance outcomes where a claim for payment has been approved after placement of a job seeker in employment or study for 13 weeks. This has not been included in this report.

*Paid Final Outcomes:* Intensive Assistance outcomes where a claim for payment has been approved after placement of a job seeker in employment or study for 26 weeks. This has not been included in this report.

*Post Assistance Off-Income Support Outcomes:* refers to the proportion of Newstart or Youth Allowance (Other) recipients who were off Newstart or Youth Allowance (Other) or any other type allowance recorded on the Integrated Employment System three months after leaving assistance. Job seekers who move from Newstart or Youth Allowance (Other) to income support payments not recorded on the Integrated Employment System, such as the Community Employment Development Projects (CDEP), age pension or any other pension where the job seekers is not registered with Centrelink as looking for work, are counted as off-benefit outcomes.

*Short Term Recipients:* are job seekers who have been registered with Centrelink as unemployed for less than 12 months and in receipt of income support.

*Unpaid exits:* Exits from Intensive Assistance that do not involve a paid outcome.

*Very Long Term Recipients:* are job seekers who have been registered with Centrelink as unemployed and in receipt of income support for 24 months or more unless otherwise stated.

*Work for the Dole commencement:* Job seekers are required to participate in WfD for up to six months over a 12-month period. This means that job seekers can participate in a number of different WfD projects and with different CWCs before completing their placement. Each time a job seeker starts with a

CWC, a new commencement is recorded.

*Work for the Dole exit:* For the purposes of PPM, job seekers are surveyed whenever they have a break between CWC placements of more than 3 months and in relation to their last CWC placement in the 12 month period.

## Regional Coverage

Regions used in this report are based on the 19 tender regions for the second Job Network contract period.

### DEWR labour market regions

