

Labour Market Assistance Outcomes

June Quarter 2000

This report contains information about placements, commencements and post labour market assistance outcomes achieved for Job Network services and other Programmes managed by Department of Employment, Workplace Relations and Small Business (DEWRSB).

Main features

Job Outcomes

The positive outcomes (employment or education/training) rate achieved in the year to end June 2000, three months after leaving assistance were:

- 41% for Intensive Assistance;
- 46% for Job Search Training;
- 84% for New Enterprise Incentive Scheme (NEIS);
- 36% for Work for the Dole, with an increase in the proportion of very long term unemployed participants, compared to the pilot projects; and
- 68% for Indigenous Employment Programme Structured Training and Employment Projects (STEP).

Job Vacancies

In the year to end June 2000 there were more than 742,000 vacancies lodged on the National Vacancy Database.

Job Placements

In the year to end June 2000 over 295,500 job seekers were placed into Job Matching vacancies. These placements include placements for those receiving other services, such as Intensive Assistance.

Commencements

In the year to end June 2000 commencements by job seekers in the various types of labour market assistance included:

- 324,500 in Intensive Assistance;
- 56,100 in Job Search Training;
- 6,600 in NEIS;
- 4,300 in Indigenous Employment Programme including STEP projects and Wage Assistance;
- 38,400 in Work for the Dole projects;
- 810 in the Return to Work Programme; and
- 7,250 in the Community Support Programme.

Income Support

In the year to end June 2000 the number of job seekers in receipt of Newstart or Youth Allowance (Other) decreased by over 67,000.

In this issue

Section 1: Labour Market Assistance Outcomes	Page 3
Section 2: Access to and participation in Labour Market Assistance	Page 10
Section 3: Participation and Outcomes by Region	Page 15
Section 4: Impact on Income Support Recipients	Page 19
Technical Notes	Page 20

Time periods used in this report

The Department's Post Programme Monitoring Survey measures outcomes achieved by job seekers 3 months after they exit labour market assistance. This report contains outcomes data for job seekers who exited assistance in the 12 months to 31 March 2000 and their post assistance outcomes achieved by 30 June 2000. Job Matching post assistance outcomes relate to job seekers who were placed in a job in April and May 1999 and outcomes achieved by 31 August 1999. Intensive Assistance post assistance outcomes are for job seekers who commenced assistance between 1 May 1998 and 30 April 1999, ceased by 31 March 2000 and were achieved by 30 June 2000. Intensive Assistance post assistance outcomes should not be confused with paid interim or paid final outcomes. Post assistance outcomes are *all* employment and education outcomes while paid outcomes relate to a subset of employment and education outcomes where Job Network members receive payment for outcomes. Commencement data, derived from DEWRSB and Centrelink administrative systems, relate to job seekers who were placed in a job or commenced assistance in the 12 months to end June 1999 and June 2000.

More information.....

For further information, please contact Robert Lipp (02 6121 6046) or Michael Cameron (02 6121 7240) or e-mail Beth.Lawrence@DEWRSB.gov.au.

ISSN:

© Commonwealth of Australia

This work is copyright. Apart from any use as permitted under the *Copyright Act 1968*, no part may be reproduced by any process without prior written permission from the Commonwealth available from Aus Info. Requests and inquiries concerning reproduction and rights should be addressed to the Manager, Legislative Services, AusInfo, GPO Box 1920, Canberra ACT 2601.

Department of Employment, Workplace Relations and Small Business
<http://www.dewrsb.gov.au/>

Section 1: Labour Market Assistance Outcomes

Post assistance labour market outcomes

In this report outcomes are presented as a proportion of all those who have left assistance. In the past, outcomes based on the Department's Post Programme Monitoring (PPM) Survey had been presented as a proportion of those *who did not proceed to further assistance*.

Care should, therefore, be taken when comparing outcomes for current services with labour market programmes operating before the introduction of the employment services market where outcome rates were affected by *excluding* those who proceeded to further labour market programme assistance. The Technical Notes at the end of this report discuss this issue further.

Table 1.1 shows the labour market outcomes and further assistance levels of all job seekers 3 months after leaving the various types of employment assistance. Job seekers are considered to be either employed, unemployed, not in the labour force or in further assistance. Hence, the sum of the row percentages is 100%.

Further assistance levels are quite low for all types of assistance with the exception of Work for the Dole where nearly 17% of participants commenced in other types of employment assistance.

Nearly half of the further assistance accessed by former Work for the Dole participants was Intensive Assistance which has an employment outcomes focus. The rest was predominantly from one Work for the Dole project to another.

Table 1.1: Post assistance labour market outcomes year to end June 2000

	Employed (%)	Unemployed (%)	Not in the Labour Force (%)	Further Assistance ¹ (%)	Exits (number)
Intensive Assistance ²	35.0	49.9	12.5	2.6	313,250
Funding level A ³	39.6	46.3	11.5	2.7	218,510
Funding level B ³	24.8	58.0	14.7	2.5	94,740
Job Search Training ⁴	37.9	52.2	4.6	5.3	50,270
NEIS ⁴	81.8	12.0	6.2	0.0	5,103
Work for the Dole ⁴	27.4	50.7	5.3	16.6	32,464
IEP – STEP ⁴	63.0	25.8	4.8	6.4	2,033
IEP - Wage Assistance ⁴	53.8	36.6	3.5	6.1	495

1 Further assistance includes commencements in Intensive Assistance, Job Search Training, NEIS, Work for the Dole, Indigenous Employment Programme (IEP) and DETYA programmes New Apprenticeships, Literacy and Numeracy and Advanced English for Migrants.

2 Job seekers who commenced Intensive Assistance between 1 May 1998 and 30 April 1999, ceased by 31 March 2000 and outcomes achieved by 30 June 2000.

3 The funding level refers to the level of disadvantage as defined by the Job Seeker Classification Instrument (JSCI). Under the first contract period there were three funding levels – 3.1, 3.2 and 3.3, with 3.3 being the most disadvantaged. Under the second contract period there are two funding levels, A and B, with funding level B being the most disadvantaged. Funding level 3.1 is included in funding level A while funding levels 3.2 and 3.3 are included under funding level B.

4 Post assistance outcomes relate to job seekers who ceased Job Search Training, NEIS, Work for the Dole, IEP Structured Training and Employment Projects (STEP) and IEP Wage Assistance between 1 April 1999 and 30 March 2000 and outcomes achieved by 30 June 2000.

Note: Outcomes for the Return to Work Programme are not available at this stage as insufficient time has elapsed from the commencement of the programme in February 2000 for a sufficient number of participants to exit assistance and be included in the PPM survey.

Source: The Post Programme Monitoring Survey conducted 3 months after job seekers cease assistance.

Post assistance employment and positive outcomes

Table 1.2 shows the shares of full-time and part-time employment, education/training and positive outcomes for those who left the various forms of assistance.

Job seekers achieved significantly higher full-time employment outcomes for New Enterprise Incentive Scheme and Indigenous Employment Programmes, both Structured Training and Employment Projects (STEP) and Wage Assistance.

Indigenous Employment Programmes - Wage Assistance was introduced in July 1999. Outcomes

shown here are for a relatively small number of responses from early commencements and should be treated with caution. Outcomes for this programme may vary once information is obtained for a larger cohort of participants.

Outcomes for Intensive Assistance funding level A were higher than for level B, reflecting the higher level of disadvantage of those assessed as level B.

It is possible to be in both employment and education or training after leaving a programme place. The high levels of post assistance education and training outcomes for the Indigenous Employment Programmes – STEP, which has a training element included in the programme, are likely to be associated with post assistance employment.

Table 1.2: Post assistance employment and positive outcomes year to end June 2000

Type of Assistance	Full-time Employed (%)	Part-time Employed (%)	Total Employed (%)	Education & Training (%)	Positive Outcomes ¹ (%)	Exits (number)
Intensive Assistance ²	18.2	16.8	35.0	7.7	41.3	313,250
Funding level A ³	21.0	18.6	39.6	8.0	46.0	218,510
Funding level B ³	11.9	12.9	24.8	6.9	30.9	94,740
Job Search Training ⁴	19.6	18.2	37.9	12.5	46.3	50,270
NEIS ⁴	53.3	28.5	81.8	8.9	84.1	5,103
Work for the Dole ⁴	15.3	12.2	27.4	11.1	35.7	32,464
IEP – STEP ⁴	44.3	18.7	63.0	22.8	67.8	2,033
IEP - Wage Assistance ⁴	41.2	12.6	53.8	12.6	57.3	495

1 Positive outcomes include employed and education/training outcomes. Positive outcomes are less than the sum of employed and education/training outcomes because some job seekers achieve both an employment and an education outcome.

2 Job seekers who commenced Intensive Assistance between 1 May 1998 and 30 April 1999, ceased by 31 March 2000 and achieved outcomes by 30 June 2000.

3 The funding level refers to the level of disadvantage as defined by the Job Seeker Classification Instrument (JSCI). Under the first contract period there were three funding levels – 3.1, 3.2 and 3.3, with 3.3 being the most disadvantaged. Under the second contract period there are two funding levels, A and B, with funding level B being the most disadvantaged. Funding level 3.1 is included in funding level A while funding levels 3.2 and 3.3 are included under funding level B.

4 Post assistance outcomes relate to job seekers who ceased Job Search Training, NEIS, Work for the Dole or Indigenous Employment Programme (IEP) Structured Training and Employment Projects (STEP) and IEP Wage Assistance between 1 April 1999 and 30 March 2000 and outcomes achieved by 30 June 2000.

Source: The Post Programme Monitoring Survey conducted 3 months after job seekers cease assistance.

Intensive Assistance

Table 1.3 shows outcomes for Intensive Assistance around 3 months after leaving assistance or placement in a job that led to a paid outcome. Outcomes are for job seekers who commenced assistance between 1 May 1998 and 30 April 1999, exited before the end of March 2000 and achieved outcomes by 30 June 2000.

These post assistance outcomes should not be confused with paid outcomes. Paid outcomes relate to job placements where Job Network providers are paid for outcomes 3 and 6 months after placement. Because of the length of placement (12 to 18 months) complete outcomes for the first year of commencements in Intensive Assistance will not be available until November 2000. However, only a small proportion of those who commenced in the first year are yet to finish their assistance and these should have only a small impact on total outcomes for this cohort.

The unsubsidised employment outcomes level was 35% for Intensive Assistance participants, with positive outcomes of 41% (an employment or education/training outcome).

Employment outcomes for those on benefits for 2 years or more (very long term beneficiaries) are particularly strong. Job seekers aged 45 years or more achieved significantly lower positive outcomes than younger job seekers. Their employment, and in particular their education outcomes, were below the national average. Job seekers aged 45 years or more tend to be longer term beneficiaries than those in younger age groups.

Education and training outcomes were higher than average for those from a non-English-speaking background, sole parents and indigenous job seekers.

Table 1.3: Intensive Assistance: Post assistance outcomes year to end June 2000¹

	Employment (%)	Education & Training (%)	Positive Outcomes ² (%)	Exits (number)
Funding level³				
A	39.6	8.0	46.0	218,510
B	24.8	6.9	30.9	94,740
Age group (years)				
15 to 20	34.7	15.0	47.2	36,629
21 to 24	37.5	11.2	46.4	34,933
25 to 34	37.8	8.8	45.0	79,128
35 to 44	36.5	7.9	42.9	67,449
45 or more	31.7	4.8	35.6	95,111
Duration on income support (months)				
0 to less than 6	41.5	10.1	50.0	66,000
6 to less than 12	38.6	9.1	46.3	39,922
12 to less than 24	36.2	7.8	42.4	80,862
24 to less than 36	32.2	6.6	37.6	53,431
36 or more	28.3	5.6	33.0	73,035
Gender				
Male	33.6	6.2	38.7	220,304
Female	38.1	11.0	46.9	92,946
Equity groups				
Disability	28.8	6.0	33.9	55,390
Indigenous	27.3	11.4	36.5	15,957
Non-English-speaking background	33.9	11.4	43.8	68,786
Sole parents	47.1	16.1	59.6	1,853
Total	35.0	7.7	41.3	313,250

1. Job seekers who commenced Intensive Assistance between 1 May 1998 and 30 April 1999, ceased by 31 March 2000 and achieved outcomes by 30 June 2000.
2. Positive outcomes include employed and education/training outcomes. Positive outcomes are less than the sum of employed and education/training outcomes because some job seekers achieve both an employment and an education outcome.
3. The funding level refers to the level of disadvantage as defined by the Job Seeker Classification Instrument (JSCI). Under the first contract period there were three funding levels – 3.1, 3.2 and 3.3, with 3.3 being the most disadvantaged. Under the second contract period there are two funding levels, A and B, with funding level B being the most disadvantaged. Funding level 3.1 is included in funding level A while funding levels 3.2 and 3.3 are included under funding level B.

Source: The Post Programme Monitoring Survey conducted 3 months after job seekers cease assistance.

Job Search Training

Table 1.4 shows around 38% of participants were in unsubsidised employment 3 months after they ceased Job Search Training, while 46% achieved a positive outcome.

Job seekers aged 15 to 34 years and those unemployed for less than 6 months achieved the highest levels of positive outcomes.

Few sole parents participated in Job Search Training although they achieved the highest positive outcomes.

Those aged under 25 years had significantly higher education and training outcomes than the average.

Employment outcomes were lower than average for job seekers aged 45 years or more, those who had been unemployed for 12 months or more, males and people with a disability.

Only a small number of indigenous job seekers left assistance in Job Search Training in the 12 months to end June 2000 and their outcomes levels were the lowest for any group.

Table 1.4: Job Search Training: Post assistance outcomes year to end June 2000¹

	Employment (%)	Education & Training (%)	Positive Outcomes ² (%)	Exits (number)
Age group (years)				
15 to 20	40.6	18.6	53.4	6,518
21 to 24	44.3	18.4	56.3	6,477
25 to 34	40.8	12.7	49.2	17,593
35 to 44	35.7	11.5	43.5	12,146
45 or more	32.4	8.4	38.4	7,536
Duration on income support (months)				
0 to less than 6	40.5	14.1	50.2	16,887
6 to less than 12	38.2	11.6	45.9	19,399
12 to less than 24	35.0	11.9	43.2	10,382
24 or more	31.8	12.2	39.6	3,602
Gender				
Male	35.1	10.8	42.7	33,644
Female	43.0	15.8	53.0	16,626
Equity groups				
Disability	34.4	10.3	41.2	3,395
Indigenous	23.6	11.8	33.8	387
Non-English-speaking background	33.2	17.3	46.0	6,465
Sole Parents	43.1	21.8	58.6	396
Total	37.9	12.5	46.3	50,270

1. Job seekers who ceased Job Search Training between 1 April 1999 and 31 March 2000 and outcomes achieved by 30 June 2000.
2. Positive outcomes include employed and education/training outcomes. Positive outcomes are less than the sum of employed and education/training outcomes because some job seekers achieve both an employment and an education outcome.

Source: The Post Programme Monitoring Survey conducted 3 months after job seekers cease assistance.

Job Matching

Table 1.5 shows the employment outcomes achieved by job seekers who were placed in an eligible job in April and May 1999 and the outcomes achieved by 3 months later. As these data relate to only 2 months of placements the numbers placed and the 3 month outcomes will be subject to seasonal influences.

Overall 72% of job seekers were in employment or education and training. Typically, positive outcomes were lower for the older age groups.

Job seekers not on income support achieved very high positive outcomes. These include people who have recently left employment and are eligible for Job Matching services but ineligible for other Job Network services. These job seekers account for 25% to 30% of all Job Matching placements.

Generally the employment provided under Job Matching is low skill. Of interest is the significant number of job seekers who achieved both an employment and an education and training outcome.

Table 1.5: Job Matching - Post assistance outcomes year to end August 1999¹

	Employment (%)	Education & Training (%)	Positive Outcomes ² (%)	Placements (number)
Age group (years)				
15 to 20	74.7	26.1	80.4	12,446
21 to 24	70.8	19.1	75.9	9,322
25 to 34	66.3	11.7	69.7	14,495
35 to 44	67.0	9.9	70.0	8,656
45 or more	62.2	7.1	65.0	6,300
Duration on income support (months)				
Not on income support ³	78.3	18.7	82.0	20,750
0 to less than 6	70.1	13.9	74.0	11,173
6 to less than 12	62.4	14.3	67.1	5,164
12 to less than 24	52.5	9.2	56.6	5,964
24 or more	50.9	9.4	55.0	8,168
Gender				
Male	62.9	12.4	66.9	32,070
Female	75.0	17.7	79.0	19,149
Equity groups				
Disability	51.8	10.0	56.8	4,273
Indigenous	55.7	13.4	59.7	1,055
Non-English-speaking background	60.0	13.6	65.7	5,655
Sole Parents	77.5	11.2	80.8	953
Total	68.2	14.6	72.1	51,219

1. Eligible Job Matching placements between 1 April and 30 May 1999 and outcomes achieved in July and August 1999.
2. Positive outcomes include employed and education/training outcomes. Positive outcomes are less than the sum of employed and education/training outcomes because some job seekers achieve both an employment and an education outcome.
3. Not on income support includes young people not in full-time education and job seekers not on income support who are eligible for Job Matching services only.

Source: The Post Programme Monitoring Survey conducted 3 months after job seekers cease assistance.

New Enterprise Incentive Scheme

Table 1.6 shows the outcomes achieved by those who left the New Enterprise Incentive Scheme (NEIS) in the 12 months up to end March 2000 and outcomes achieved by 30 June 2000.

The positive outcomes level for NEIS is high at 84% with employment outcomes at 82%. During the 1996-97 financial year 82% of NEIS participants achieved a positive outcome and 80% of participants achieved an employment outcome.

Three months after participants ceased NEIS assistance, 68% were still self-employed.

Another 14% were working as wage and salary earners. The majority of these participants were still involved in the business established through NEIS.

Under NEIS, males achieved higher employment and positive outcomes than females (unlike the outcomes for other Job Network services). Males tended to remain self-employed more often than females.

Job seekers from a non-English-speaking background and people with a disability achieved lower than average employment outcomes from NEIS.

Table 1.6: New Enterprise Incentive Scheme: Post assistance outcomes year to end June 2000¹

	Employment			Education & Training (%)	Positive Outcomes ³ (%)	Exits (number)
	Self Employed ² (%)	Employed (%)	Total Employed (%)			
Age group (years)						
15 to 20	38.1	33.3	71.4	14.3	81.0	96
21 to 24	62.6	23.3	85.9	11.0	87.1	449
25 to 34	68.4	16.4	84.8	8.8	86.9	1,752
35 to 44	69.7	10.8	80.5	9.1	83.3	1,675
45 or more	66.5	12.9	79.4	7.9	81.5	1,131
Gender						
Males	70.1	13.8	83.9	8.3	86.1	2,889
Females	64.7	14.4	79.1	9.5	81.7	2,214
Equity groups						
Disability	63.7	8.3	72	7.9	75.4	512
Indigenous ⁴	na	na	na	na	na	na
Non-English-speaking background	63.7	13	76.7	9.0	79.7	750
Sole Parents ⁴	na	na	na	na	na	na
Total	67.7	14.1	81.8	8.9	84.1	5,103

1. Job seekers who left NEIS placements between 1 April 1999 and 31 March 2000 and outcomes achieved by 30 June 2000.

2. Includes a small proportion of participants who are self employed but in a business not set up under NEIS.

3. Positive outcomes include employed and education/training outcomes. Positive outcomes are less than the sum of employed and education/training outcomes because some job seekers achieve both an employment and an education outcome..

4. Not available as the estimate is based on a small number of known outcomes which are subject to high levels of sampling error.

Source: *The Post Programme Monitoring Survey conducted 3 months after job seekers cease assistance.*
Department of Employment, Education, Training and Youth Affairs, Annual Report 1996-97.

Work for the Dole

Work for the Dole aims to develop the work habits of participants and involve them and the local community in quality projects that are of value to the community. Employment outcomes are not part of the programme's immediate objectives but are included here as they demonstrate the success of increased job search activity.

Participants in Work for the Dole believed their job prospects, motivation and self-confidence had improved by participating in Work for the Dole. The results are very positive with 60% of participants reporting an improvement in their chances of getting a job, 83% reporting an improvement in their desire to find a job and 75% reporting improved self-confidence.

Table 1.7 shows outcomes for job seekers who left their Work for the Dole projects between 1 April 1999 and 31 March 2000 and outcomes achieved by 30 June 2000. This period is before the introduction of Community Work Co-ordinators.

Positive outcomes were achieved by 36% of participants. Around 27% achieved an employment outcome while 11% achieved an education/training outcome. Nearly 3% achieved both an employment and education and training outcome.

These employment outcomes have held up well over the last 6 months considering the increased participation of those on benefits for 2 years or more (now around 45% of exits from Work for the Dole projects compared to 41% in the year to end December 1999).

Those aged 25 to 34 became eligible for Work for the Dole in July 1999. Outcomes for this group are lower than for those aged under 25 years.

Job seekers aged over 34 years participate in Work for the Dole on a voluntary basis. Outcomes for older volunteers tended to be lower than for younger participants.

Table 1.7: Work for the Dole: Post Assistance Outcomes year to end June 2000¹

	Employment (%)	Education & Training (%)	Positive Outcomes ² (%)	Exits (number)
Age group (years)				
20 or less	26.7	12.8	36.7	10,235
21 to 24	29.5	11.6	37.7	13,534
25 to 34	25.5	8.7	31.9	7,512
35 to 44	25.5	9.7	32.8	761
45 or more	21.9	7.9	28.8	422
Duration on income support (months)				
0 to less than 6	39.9	17.7	52.2	2,038
6 to less than 12	35.2	13.8	45.6	6,775
12 to less than 24	30.6	11.7	38.9	8,960
24 or more	20.4	8.5	27.0	14,691
Gender				
Males	25.8	9.4	33.2	22,173
Females	30.2	13.9	39.8	10,291
Equity groups				
Disability	20.5	8.5	27.2	3,284
Indigenous	14.9	7.1	19.9	1,283
Non-English-speaking background	27.8	18.5	43.0	1,971
Sole Parents	24.3	5.4	28.1	316
Total	27.4	11.1	35.7	32,464

1. Job seekers who left a Work for the Dole project between 1 April 1999 and 31 March 2000 and outcomes achieved by 30 June 2000.

2. Positive outcomes include employed and education/training outcomes. Positive outcomes are less than the sum of employed and education/training outcomes because some job seekers achieve both an employment and an education outcome.

Source: The Post Programme Monitoring Survey conducted 3 months after job seekers cease assistance.

Section 2: Access to and Participation in Labour Market Assistance

Type of labour market assistance

Table 2.1 shows the commencements in Job Network services and other types of labour market assistance for the financial years 1998-1999 and 1999-2000.

Job seekers who transferred to different Job Network providers as a consequence of the second contract period are treated as a new commencement.

The number of placements is shown for Job Matching. The table also shows the proportion of commencements or placements for job seekers who are long term beneficiaries. (That is they have been receiving Newstart, Youth Allowance (Other) or other benefits for 12 months or more.)

Job seekers who were placed in Job Matching vacancies or commenced Job Search Training have typically been on benefits for shorter periods of time.

The share of those on income support for 12 months or more in Work for the Dole has been increasing. During the Work for the Dole Pilot projects in 1998 the share of such beneficiaries was 58%. In the year to end June 2000, the proportion of participants who were long term beneficiaries was 79%.

Furthermore in the year to end June 2000 there were more than 742,000 vacancies lodged on the National Vacancy Data Base.

Table 2.1: Participation¹ by type of labour market assistance in 1998-1999 and 1999-2000¹

Type of labour market assistance	1998-1999		1999-2000	
	Commencements (number)	Proportion of long term beneficiaries ² (%)	Commencements (number)	Proportion of long term beneficiaries ² (%)
Intensive Assistance	289,573	64.7	324,490	61.7
Job Search Training	54,389	36.9	56,108	24.4
Job Matching ³	283,797	na	295,535	na
Job Network Eligible	244,463	48.4	220,208	31.8
Job Matching Only ⁴	39,334	na	75,327	na
NEIS ⁴	6,571	na	6,642	na
Work for the Dole	23,389	68.6	38,352	79.1
IEP – STEP	2,484	22.5	2,673	40.3
IEP - Wage Assistance	na	na	1,631	46.1
Return to Work Programme ⁵	na	na	810	na
Community Support Programme ⁶	9,540	na	7,249	76.4

1. Commencement or placement of job seekers in labour market assistance funded by DEWRSB between 1 July 1998 and 30 June 1999 and 1 July 1999 and 30 June 2000.

2. The proportion of job seekers who have been registered as unemployed and have been receiving income support including Newstart, Youth Allowance (Other) or other types of income support for 12 months or more.

3. Includes both Job Network Eligible job seekers that may be eligible for all Job Network services and Job Matching Only (JMO) - job seekers who are only eligible for Job Matching services.

4. na – not available as duration of unemployment is not recorded for Job Matching Only placements or NEIS commencements.

5. Return to Work Programme commenced in February 2000 and many participants are not on income support.

6. Centrelink holds information on commencements in the Community Support Programme. More detailed information will be reported once it becomes available on DEWRSB administrative systems.

Source: DEWRSB administrative systems. Community Support Programme commencements provided by Centrelink.

Access to Job Matching

Access to services and programmes by job seekers with different characteristics will clearly depend on their eligibility but also on their assessed capacity to benefit from the assistance provided. To ensure equity of access for job seekers with different characteristics, the proportion in assistance is compared to their proportion of the eligible population.

Job seekers with particular characteristics may be under-represented in some types of assistance but over-represented in others. Hence, it is important to look at all types of assistance in assessing equity of assistance. While indigenous job seekers may be under-represented in some types of assistance, for example, other, more specific, programmes are directed towards addressing their particular needs.

Table 2.2 shows, for a range of job seeker characteristics, the proportion in the eligible population and the proportion in Job Matching jobs. This is shown for all pension types and separately for those on the activity tested pensions Newstart and Youth Allowance (Other). Nearly 25% of the eligible population, for example, were aged 15 to 20 years and they accounted for 33% of all Job Matching placements in the 12 months to the end of June 2000.

Younger job seekers, those on income support for shorter durations, those who had completed Year 10 to Year 12 and those who were male had a higher proportion of Job Matching placements compared to their proportion of the eligible population.

Table 2.2: Access to Job Matching by job seeker characteristics¹

	All income support types		Newstart/Youth Allowance (Other)	
	Characteristics of the Job Matching eligible ² (%)	Characteristics of Job Matching placements ² (%)	Characteristics of the Job Matching eligible ³ (%)	Characteristics of Job Matching placements ³ (%)
Age group (years)				
15 to 20	24.8	33.3	12.3	18.0
21 to 24	12.9	16.8	15.6	19.9
25 to 34	23.0	24.5	27.0	31.1
35 to 44	18.3	14.6	20.8	17.6
45 or more	21.1	10.9	24.3	13.4
Total	100.0	100.0	100.0	100.0
Duration on income support (months)				
0 to less than 6	37.5	57.9	27.7	39.5
6 to less than 12	12.9	10.3	15.1	15.4
12 to less than 24	12.7	13.5	14.9	19.9
24 to less than 36	13.1	7.4	15.1	10.5
36 or more	23.9	10.9	27.2	14.6
Total	100.0	100.0	100.0	100.0
Educational attainment				
Less than Year 10	30.0	28.5	25.7	21.3
Year 10	35.5	37.7	37.1	41.8
Year 12	17.8	20.3	18.0	21.0
Post secondary	16.8	13.5	19.2	16.0
Total	100.0	100.0	100.0	100.0
Gender				
Male	62.6	64.1	68.8	69.5
Female	37.4	35.9	31.2	30.5
Total	100.0	100.0	100.0	100.0
Equity groups⁴				
Disability	16.9	9.1	19.0	11.1
Indigenous	4.8	2.7	5.0	3.0
Non-English-speaking background	13.6	9.2	16.0	11.4
Sole parents	4.6	2.8	na	na

1. Placements in Job Matching vacancies 1 July 1999 and 30 June 2000.

2. Includes job seekers registered with Centrelink as unemployed and in receipt of the activity tested allowances Newstart and Youth Allowance (Other) or other types of income support payments not subject to activity test requirements.

3. Job seekers in receipt of Newstart and Youth Allowance (Other).

4. Equity groups are not mutually exclusive.

Source: DEWRBS administrative systems.

Access to Job Search Training

Table 2.3 shows, for a range of job seeker characteristics, the proportion in the eligible population and the proportion commencing Job Search Training. This is shown for all pension types and separately for those on the activity tested pensions Newstart and Youth allowance (Other).

Nearly 29% of the eligible population, for example, were aged 15 to 20 years and they accounted for 15% of all Job Search Training commencements in the 12 months to the end of June 2000.

The proportion of commencements in Job Search Training were higher than the proportion of the eligible population for those aged 25 to 34 years, those on income support for less than 2 years, those who had higher educational qualifications and those who were male.

Table 2.3: Access to Job Search Training by job seeker characteristics¹

	All income support types		Newstart/Youth Allowance (Other)	
	Characteristics of the Job Search Training eligible ² (%)	Characteristics of Job Search Training commencements ² (%)	Characteristics of the Job Search Training eligible ³ (%)	Characteristics of Job Search Training commencements ³ (%)
Age group (years)				
15 to 20	28.8	15.4	12.3	12.8
21 to 24	19.2	14.4	15.6	15.1
25 to 34	26.3	33.1	27.0	34.3
35 to 44	16.6	23.0	20.8	23.4
45 or more	9.0	14.1	24.3	14.5
Total	100.0	100.0	100.0	100.0
Duration on income support (months)				
0 to less than 6	51.7	43.1	27.7	40.9
6 to less than 12	17.5	32.5	15.1	34.6
12 to less than 24	18.8	19.0	14.9	19.9
24 to less than 36	7.1	2.6	15.1	2.5
36 or more	4.9	2.7	27.2	2.1
Total	100.0	100.0	100.0	100.0
Educational attainment				
Less than Year 10	10.3	1.6	25.7	1.6
Year 10	35.0	36.6	37.1	36.2
Year 12	27.9	26.3	18.0	25.7
Post secondary	26.7	35.5	19.2	36.5
Total	100.0	100.0	100.0	100.0
Gender				
Male	60.5	65.2	68.8	67.3
Female	39.5	34.8	31.2	32.7
Total	100.0	100.0	100.0	100.0
Equity groups⁴				
Disability	7.4	6.2	19.0	6.3
Indigenous	0.6	0.3	5.0	0.3
Non-English-speaking background	7.6	11.0	16.0	11.1
Sole parents	4.0	1.8	na	na

1. Commencement of job seekers in Job Search Training 1 July 1999 and 30 June 2000.

2. Includes job seekers registered with Centrelink as unemployed and in receipt of the activity tested allowances Newstart and Youth Allowance (Other) or other types of income support payments not subject to activity test requirements.

3. Job seekers in receipt of Newstart and Youth Allowance (Other).

4. Equity groups are not mutually exclusive.

Source: DEWRSB administrative systems.

Access to Intensive Assistance

Table 2.4 shows, for a range of job seeker characteristics, the proportion in the eligible population and the proportion commencing Intensive Assistance. This is shown for all pension types and separately for those on the activity tested pensions Newstart and Youth allowance (Other).

Around 14% of the eligible population, for example, were aged 15 to 20 years and they accounted for 12% of all Intensive Assistance commencements in the 12 months to the end of June 2000.

The proportion of commencements in Intensive Assistance were higher than the proportion of the eligible population for older jobseekers, those on Newstart or Youth Allowance (Other) for longer periods and with lower educational qualifications and those who were male.

Those from a non-English-speaking background had a slightly higher share of commencements than their share of the eligible population. Indigenous job seekers are under-represented in Intensive Assistance, however, their access to Indigenous Employment Programmes increases their relative share of total assistance.

Table 2.4: Access to Intensive Assistance by job seeker characteristics¹

	All income support types		Newstart/Youth Allowance (Other)	
	Characteristics of the Intensive Assistance eligible ² (%)	Characteristics of Intensive Assistance commencements ² (%)	Characteristics of the Intensive Assistance eligible ³ (%)	Characteristics of Intensive Assistance commencements ³ (%)
Age group (years)				
15 to 20	14.4	11.6	12.3	10.4
21 to 24	11.2	11.4	15.6	11.8
25 to 34	24.2	25.3	27.0	25.5
35 to 44	20.7	22.6	20.8	22.5
45 or more	29.6	29.1	24.3	29.8
Total	100.0	100.0	100.0	100.0
Duration on income support (months)				
0 to less than 6	18.0	26.9	27.7	24.6
6 to less than 12	10.6	11.5	15.1	12.0
12 to less than 24	18.3	17.1	14.9	17.8
24 to less than 36	17.1	14.7	15.1	15.2
36 or more	36.0	29.9	27.2	30.4
Total	100.0	100.0	100.0	100.0
Educational attainment				
Less than Year 10	35.4	30.7	25.7	30.9
Year 10	40.4	41.2	37.1	40.8
Year 12	13.6	15.5	18.0	15.5
Post secondary	10.7	12.6	19.2	12.8
Total	100.0	100.0	100.0	100.0
Gender				
Male	67.5	69.1	68.8	71.6
Female	32.5	30.9	31.2	28.4
Total	100.0	100.0	100.0	100.0
Equity groups⁴				
Disability	18.3	14.7	19.0	14.9
Indigenous	6.4	5.1	5.0	4.9
Non-English-speaking background	19.0	20.0	16.0	20.2
Sole parents	3.8	2.8	na	na

1. Commencement of job seekers in Intensive Assistance 1 July 1999 and 30 June 2000.

2. Includes job seekers registered with Centrelink as unemployed and in receipt of the activity test ed allowances Newstart and Youth Allowance (Other) or other types of income support payments not subject to activity test requirements.

3. Job seekers in receipt of Newstart and Youth Allowance (Other).

4. Equity groups are not mutually exclusive.

Source: DEWRSB administrative systems.

Participation in Work for the Dole

Table 2.4 shows, for a range of job seeker characteristics, the proportion in the eligible population and the proportion commencing Work for the Dole. This is shown only for those on the activity tested pensions Newstart and Youth Allowance (Other). It is possible for those on other types of income support and those aged over 34 to volunteer for Work for the Dole.

Nearly 12% of the eligible population, for example, were aged 15 to 20 years but they accounted for 22% of all Work for the Dole commencements in the 12 months to the end of June 2000.

Eligibility for Work for the Dole is for those under 35 years and the majority of commencements are in this group. The proportion of commencements in Work for the Dole were higher than the proportion of the eligible population for job seekers on Newstart or Youth Allowance (Other) for 2 years or more, those with Year 10 to Year 12 educational qualifications and those who were males.

Table 2.5: Access to Work for the Dole by job seeker characteristics¹

	Characteristics of Newstart and Youth Allowance (Other) recipients ²	Characteristics of Work for the Dole commencements
Age group (years)		
15 to 20	12.3	22.4
21 to 24	15.6	32.9
25 to 34	27.0	40.5
35 to 44	20.8	2.7
45 or more	24.3	1.4
Total	100.0	100.0
Duration on income support (months)		
0 to less than 6	27.7	5.3
6 to less than 12	15.1	15.6
12 to less than 24	14.9	25.2
24 to less than 36	15.1	17.3
36 or more	27.2	36.6
Total	100.0	100.0
Educational attainment		
Less than Year 10	25.7	21.7
Year 10	37.1	41.7
Year 12	18.0	23.4
Post secondary	19.2	13.3
Total	100.0	100.0
Gender		
Male	68.8	70.1
Female	31.2	29.9
Total	100.0	100.0
Equity groups³		
Disability	19.0	12.1
Indigenous	5.0	4.0
Non-English-speaking background	16.0	7.1
Sole parents	na	1.2

1. Commencement of job seekers in Work for the Dole 1 July 1999 and 30 June 2000.

2. Job seekers receiving Newstart and Youth Allowance (Other) as at 30 June 2000.

3. Equity groups are not mutually exclusive.

Source: DEWRSB administrative systems.

Section 3: Participation and Outcomes by Region

Participation in labour market assistance by region

This section presents participation by job seekers in labour market assistance for the DEWRSB Labour Market Regions used during the second contract period for Job Network. A map of DEWRSB regions is included in the Technical Notes of this report. Reporting at a regional level is restricted to the main types of Job Network assistance and Work for the Dole.

Table 3.1 provides details of placements in Job Matching jobs and commencements in Job Search Training, Intensive Assistance and Work for the Dole in the year to end June 2000.

The number in each service for a region will depend on the size of the region, the labour market conditions and the relative disadvantage of job seekers in the region.

While Table 3.1 shows numbers, Table 3.3 shows the proportion of placements and commencements by region and the proportion of Newstart and Youth Allowance (Other) in the region.

Table 3.1: Commencements in labour market assistance by region year to end June 2000¹

	Job Matching ²	Job Search Training	Intensive Assistance	Work for the Dole
Sydney	40,408	9,563	49,968	5,236
Hunter and North Coast	13,260	3,519	28,001	3,539
Illawarra and SE NSW	7,102	1,653	10,102	1,510
Western NSW	13,817	1,194	9,140	1,294
Riverina	7,171	668	4,484	434
New South Wales	81,757	16,598	101,695	12,013
Melbourne	45,556	10,501	51,718	4,593
Eastern Victoria	8,222	1,697	9,201	762
Western Victoria	14,614	2,542	18,160	2,247
Victoria	68,392	14,740	79,079	7,602
Brisbane	45,091	8,344	42,971	6,161
Southern Queensland	12,483	1,611	12,170	1,579
Central and Northern QLD	22,156	2,521	14,026	1,343
Queensland	79,731	12,476	69,167	9,083
Perth	15,896	3,607	18,541	2,719
South Western Australia	5,413	646	3,053	635
Greater Western Australia	5,217	274	3,447	393
Western Australia	26,525	4,527	25,041	3,747
Adelaide	14,213	3,883	22,128	2,999
South Australia Country	10,005	1,274	8,991	918
South Australia	24,218	5,157	31,119	3,917
Tasmania	6,366	1,353	11,626	1,360
Northern Territory	5,071	322	3,325	339
Australian Capital Territory	3,476	935	3,438	291
Australia	295,535	56,108	324,490	38,352

1. Commencement or placement in labour market assistance between 1 July 1999 and 30 June 2000.

2. Includes both Job Network Eligible job seekers that may be eligible for all Job Network services and Job Matching Only (JMO) - job seekers who are only eligible for Job Matching services.

Source: DEWRSB administrative system.

Job Matching job placements by region

Table 3.2 shows the number of Job Matching placements for both Job Network eligible (JNE) and Job Matching only (JMO) job seekers in each region. Also shown is the proportion of job placements by JMOs.

In the 12 months to 30 June 2000, over 742,000 vacancies were lodged on the Australian Job Search. During this time over 295,500 job seekers were placed in Job Matching vacancies. Nationally 26% of all job placements were filled by JMOs.

Greater Western Australia, Northern Territory, Western NSW and Riverina had a much higher share of job placements for JMOs than the national average while Adelaide, Tasmania, Perth and the Hunter and North Coast had a much lower share of job placements for JMOs.

Table 3.2: Job Matching placements by region year to end June 2000

	Job Matching ¹ (number)			Share JMO placements
	JNE ²	JMO ³	Total	(%)
Sydney	29,305	11,103	40,408	27.5
Hunter and North Coast	10,596	2,664	13,260	20.1
Illawarra and SE NSW	5,387	1,715	7,102	24.1
Western NSW	9,415	4,402	13,817	31.9
Riverina	4,751	2,420	7,171	33.7
New South Wales	59,452	22,305	81,757	27.3
Melbourne	34,428	11,128	45,556	24.4
Eastern Victoria	5,946	2,276	8,222	27.7
Western Victoria	10,802	3,812	14,614	26.1
Victoria	51,176	17,216	68,392	25.2
Brisbane	34,103	10,988	45,091	24.4
Southern Queensland	9,171	3,312	12,483	26.5
Central and Northern QLD	15,776	6,380	22,156	28.8
Queensland	59,051	20,680	79,731	25.9
Perth	12,775	3,121	15,896	19.6
South Western Australia	3,886	1,527	5,413	28.2
Greater Western Australia	3,065	2,152	5,217	41.2
Western Australia	19,724	6,801	26,525	25.6
Adelaide	12,288	1,925	14,213	13.5
South Australia Country	7,626	2,379	10,005	23.8
South Australia	19,914	4,304	24,218	17.8
Tasmania	5,123	1,243	6,366	19.5
Northern Territory	3,214	1,857	5,071	36.6
Australian Capital Territory	2,555	921	3,476	26.5
Australia	220,208	75,327	295,535	25.5

1. Placements in eligible Job Matching placements between 1 July 1999 and 30 June 2000.

2. Job Network Eligible job seekers that may be eligible for all Job Network services.

3. Job Matching Only - job seekers who are eligible only for Job Matching services.

Source: DEWRSB administrative systems

Labour market assistance by region

Table 3.3 shows the proportion of Job Matching job placements for Job Network eligible job seekers and commencements in Job Search Training, Intensive Assistance and Work for the Dole for each region. The regional proportions of income support recipients on Newstart or Youth Allowance (Other) as at June 2000 are also shown.

Despite a strong labour market in NSW, Sydney, Hunter and North Coast and Illawarra and South East NSW had a lower proportion of Job Matching placements than their share of income support recipients. This pattern was also repeated in the capital cities Melbourne, Perth and Adelaide.

Job Search Training commencements were over-represented in Sydney, Riverina, Victoria, Brisbane, Adelaide and the ACT.

Intensive Assistance commencements were over-represented in Sydney, Hunter and North Coast, Riverina, Eastern and Western Victoria, Southern Queensland, and South Australia.

Work for the Dole commencements were over-represented in Hunter and North Coast, Illawarra and South East NSW, Western NSW, Western Victoria, Brisbane, Southern Queensland, Perth, South Western Australia and Adelaide.

Table 3.3: Comparison of labour market assistance by region year to end June 2000 ¹

	Proportion of Income Support recipients ² (%)	Job Matching (JNE) ³ (%)	Job Search Training (%)	Intensive Assistance (%)	Work for the Dole (%)
Sydney	14.3	12.9	16.7	15.5	13.7
Hunter and North Coast	8.2	5.3	6.2	8.4	9.2
Illawarra and SE NSW	3.2	2.8	3.1	3.2	3.9
Western NSW	3.0	4.1	2.1	2.9	3.4
Riverina	1.2	2.0	1.5	1.4	1.1
New South Wales	29.9	27.0	29.6	31.4	31.3
Melbourne	16.3	15.3	18.7	16.0	12.0
Eastern Victoria	2.6	3.0	2.9	2.8	2.0
Western Victoria	4.4	5.2	4.5	5.6	5.9
Victoria	23.4	23.5	26.1	24.4	19.8
Brisbane	13.4	15.7	15.3	13.3	16.1
Southern Queensland	3.1	4.0	2.8	3.7	4.1
Central and Northern QLD	5.2	6.8	4.5	4.4	3.5
Queensland	21.7	26.5	18.1	21.4	20.2
Perth	6.8	6.0	6.3	5.6	7.1
South Western Australia	1.4	1.7	1.1	1.0	1.7
Greater Western Australia	1.4	1.3	0.6	1.1	1.0
Western Australia	9.6	9.0	8.0	7.7	9.8
Adelaide	6.5	5.9	6.9	6.7	7.8
South Australia Country	2.6	3.2	2.4	2.8	2.4
South Australia	9.1	9.1	9.3	9.5	10.2
Tasmania	3.6	2.4	2.4	3.6	3.5
Northern Territory	1.9	1.3	0.7	1.0	0.9
Australian Capital Territory	1.0	1.2	1.5	1.0	0.8
Australia	100.0	100.0	100.0	100.0	100.0

1. Commencement or placement of job seekers in labour market assistance funded by DEWRSB between 1 July 1999 and 30 June 2000.

2. Job Seekers who received Newstart or Youth Allowance (Other) as at 30 June 2000.

3. Includes Job Network Eligible job seekers that may be eligible for all Job Network services and excludes Job Matching Only - job seekers who are eligible only for Job Matching services.

Source: DEWRSB administrative systems.

Employment outcomes by region

Table 3.4 shows the unsubsidised employment outcomes by region for Job Search Training, Intensive Assistance and Work for the Dole.

Brisbane, Central & Northern Queensland and the Australian Capital Territory achieved employment outcomes equal to or higher than the national average for Job Search Training, Intensive Assistance and Work for the Dole.

Employment outcomes for Intensive Assistance in Sydney and in the rest of NSW were amongst the lowest of all regions. This is despite Sydney and the rest of NSW experiencing significant jobs growth during the last 2 years. In contrast, Intensive Assistance outcomes in regions with poorer job prospects such as South Australia and Tasmania have been above the national average.

This indicates that Intensive Assistance outcomes can still be poor in a strong labour market. The reason for this could be that the client group reflects those with more significant employment barriers, those with relatively little labour market disadvantage already having found work.

Employment outcomes for Work for the Dole were highest in Sydney, Melbourne, Brisbane, Southern Queensland, Central and Northern Queensland and Adelaide. In contrast, employment outcomes in Hunter & North Coast, Riverina and Tasmania were well below the national average.

The Northern Territory and ACT outcome estimates for Work for the Dole are based on small numbers of known outcomes and should be treated with caution.

Table 3.4: Regional labour market post assistance employment outcomes year to end June 2000

	Job Search Training ¹ (%)	Intensive Assistance ² (%)	Work for the Dole ¹ (%)
Sydney	37.1	33.8	29.1
Hunter and North Coast	38.9	32.6	23.4
Illawarra and SE NSW	39.2	31.8	25.2
Western NSW	31.7	29.2	25.6
Riverina	42.0	31.6	24.1
New South Wales	37.7	32.8	26.1
Melbourne	36.3	34.2	28.8
Eastern Victoria	43.3	35.3	27.2
Western Victoria	41.3	37.0	25.5
Victoria	38.1	34.9	27.5
Brisbane	38.1	37.4	29.3
Southern Queensland	43.0	34.8	30.6
Central and Northern QLD	41.4	36.7	28.7
Queensland	39.4	36.9	29.5
Perth	36.7	39.0	26.5
South Western Australia	36.7	40.9	24.9
Greater Western Australia	41.6	34.2	26.7
Western Australia	37.0	38.6	26.3
Adelaide	34.2	35.1	31.1
South Australia Country	38.6	35.8	25.0
South Australia	35.4	35.3	29.5
Tasmania	38.7	36.8	22.2
Northern Territory	29.3	33.7	22.6
Australian Capital Territory	39.9	35.0	39.5
Australia	37.9	35.0	27.4

1. Post assistance outcomes relate to job seekers who ceased Job Search Training or Work for the Dole between 1 April 1999 and 31 March 2000 and outcomes achieved by 30 June 2000.

2. Job seekers who commenced Intensive Assistance between 1 May 1998 and 30 April, ceased assistance by 31 March 2000 and outcomes achieved by 30 June 2000.

Source: The Post Programme Monitoring Survey conducted 3 months after job seekers cease assistance.

Section 4: Impact on Income Support Recipients

Number of income support recipients

An important goal of employment assistance is to reduce or remove employment barriers experienced by job seekers so they can compete effectively for jobs. Higher levels of employment assistance are provided to the most disadvantaged job seekers.

While this report focuses mainly on the outcomes achieved by individual forms of assistance, it is also important to note that other factors, such as administrative changes and economic conditions, also have a significant impact on the number of income support recipients.

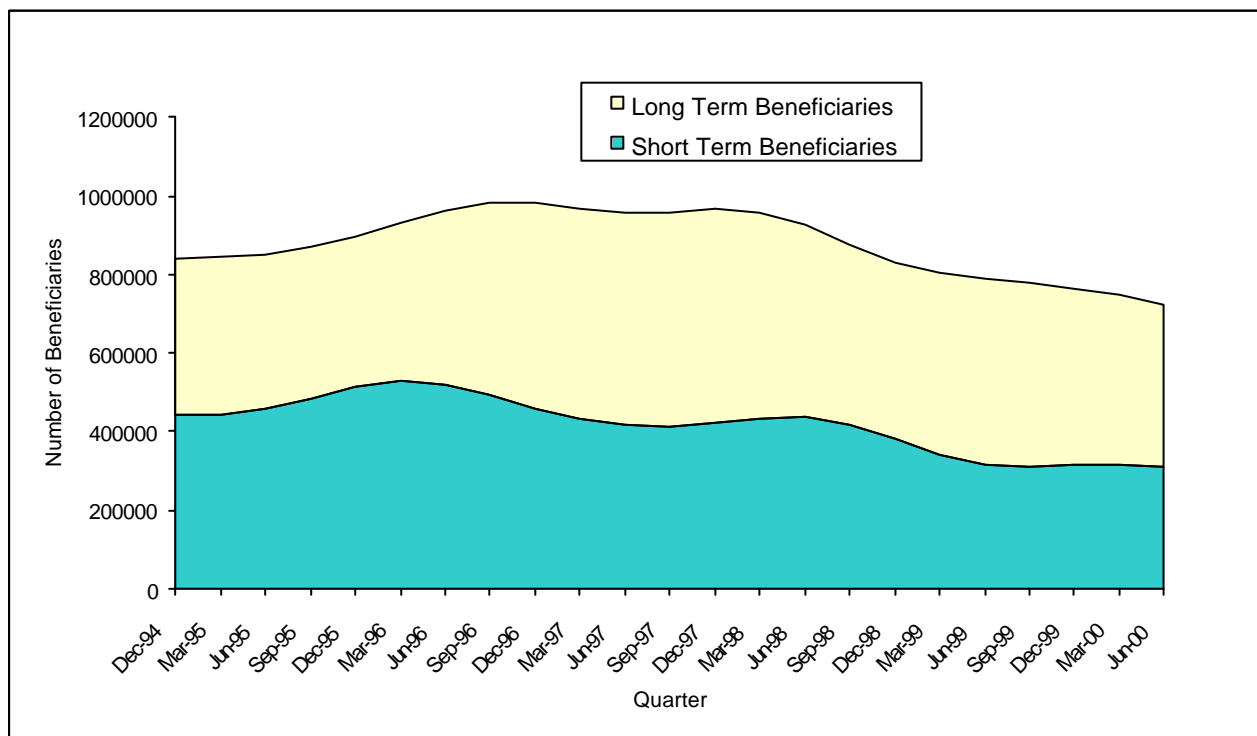
Figure 4.1 shows the changes over time in the number of short and long term beneficiaries. Many long term beneficiaries (in receipt of Newstart and Youth Allowance (Other) for 12 months or more) will have had a job at some time over the last 12 months. These job seekers are reclassified as short term beneficiaries only if they remain off benefits for 13 weeks or more.

Hence, long term beneficiaries should not be confused with the long term unemployed as defined by the Australian Bureau of Statistics. The long term unemployed are people currently looking for work who have not had a full-time job that lasted for 2 weeks or more in the last year.

Data from the Department of Family and Community Services show that in the 12 months to the end of June 2000, the number of people in receipt of Newstart or Youth Allowance (Other) decreased by over 67,200 to around 672,300 job seekers.

While the *proportion* of total recipients who were long term beneficiaries increased from 57% in June 1999 to nearly 61% in June 2000, the *number* of job seekers actually receiving benefits on a long term basis decreased by over 12,700. Long term beneficiaries, because of their higher levels of disadvantage, have greater access to Intensive Assistance.

Figure 4.1: Number of Income Support Recipients¹



1. Data from DEWRSB administrative systems and is seasonally adjusted and smoothed. Figures quoted in the text are from the Department of Family and Community Services: "Labour Market and Related Payments a monthly profile, June 2000".

Data sources

The Department uses a number of data sources to determine the outcomes achieved by job seekers during and after they have ceased labour market assistance.

Post Programme Monitoring (PPM) surveys have been undertaken since 1987 and used to assess the employment and education status of former programme participants 3 months after they exit assistance. The PPM survey attempts a full enumeration of all former programme participants except in the case of Job Matching where a sample of around 50,000 job placements were followed up in 1999. Job seekers who leave employment assistance and then proceed to another employment assistance place before selection in the PPM survey, are excluded from the survey. For monitoring purposes these job seekers are considered to be in further assistance.

The overall response rate for the PPM survey, at around 60%, provides outcomes estimates that are generally accurate to within plus or minus 1 percentage point at the National level.

DEWRSB administrative systems record details of placements, commencements and paid outcomes for labour market assistance.

The PPM outcomes for Intensive Assistance are derived from two sources - DEWRSB administrative systems and the PPM survey. The administrative system provides information on the primary and secondary paid interim outcomes for job seekers 3 months after their placement into a job. The PPM survey provides the employment and training status of job seekers 3 months after they exited assistance without having achieved a paid interim outcome. The addition of the paid interim and PPM survey outcomes data for unpaid exits provides the labour force status for participants at the 3 month point in time and is comparable to measurements for other types of employment assistance.

Post Programme Monitoring Outcomes

PPM Measures of Outcomes

Table A below provides a summary of PPM Outcomes under current employment assistance (Job Network), mutual obligation arrangements (Work for the Dole - WfD) and a range of previous labour market programmes that operated in the mid-1990s (under the *Working Nation* banner). There are three measures of Outcomes rates:

- *employment* (the proportion of participants who achieved an employment outcome compared to all those who left assistance);
- *education and/or training* (the proportion of participants who achieved an education and/or training outcome compared to all those who left assistance); and
- *'positive' outcomes* (the proportion of participants who achieved an employment or education and training outcome compared to all those who left assistance).

Methodology for Measuring Outcomes Rates

In calculating PPM outcome rates, a decision has to be made about the treatment of those participants who left the programme and went on to further assistance: whether they are included or excluded from the measure of outcomes:

- under past PPM methodology, this group was *excluded* from the measure. It is evident, however, that this resulted in higher outcomes rates when there was a high rate of churning between programmes (as reflected in the figures for "Further Assistance" in the Table);
- an improved methodology has been adopted that *includes* all participants who went on to further assistance. This provides a more comprehensive picture of what has happened to all participants in programmes.
 - this methodology is consistent with how the *cost per employment outcome* from programmes has always been measured in the Department's evaluations of labour market programmes.

Measures provided under the new methodology are set out in the final three right-hand columns of Table A. The previous estimates, based on the old method, are in the left hand columns for comparative purposes only.

Table A: PPM Outcomes (3 months) (%): Old and New Methods

	Old Method			Further Assistance	New Method		
	Employment Outcomes	Education & Training Outcomes	Positive Outcomes ¹		Employment Outcomes ²	Education & Training Outcomes ²	Positive Outcomes ²
Job Network³							
Job Search Training	40.0	13.2	48.9	5.3	37.9	12.5	46.3
Intensive Assistance	35.9	7.9	42.4	2.6	35.0	7.7	41.3
NEIS	81.8	8.9	84.1	0.0	81.8	8.9	84.1
IEP							
STEP	67.3	24.4	72.4	6.4	63.0	22.8	67.8
Wage Assistance	57.3	13.4	61.0	6.1	53.8	12.6	57.3
Work for the Dole ⁴	32.9	13.3	42.8	16.6	27.4	11.1	35.7
Working Nation⁵							
Job Clubs	36.4	10.8	43.8	31.7	24.9	7.4	29.9
Working Nation⁶							
JobSkills	35.1	12.4	44.3	22.0	27.4	9.7	34.6
JobTrain	31.9	8.9	37.8	11.7	28.1	7.8	33.4
JobStart	33.7	12.3	42.7	30.0	23.6	8.6	29.9
LEAP	52.8	6.4	56.3	8.5	48.3	5.9	51.5
LEAP	25.8	10.3	33.7	13.1	22.4	8.9	29.3
New Work Opportunities	21.0	5.2	24.8	14.8	17.9	4.4	21.1
SkillShare	36.9	14.0	47.0	17.8	30.3	11.5	38.6
Special Intervention	21.4	20.7	39.4	38.7	13.1	12.7	24.2

1. The proportion of participants that achieved an employment and/or education/training outcome *excluding* those that went onto further assistance.
2. The proportion of participants that achieved an employment and/or education/training outcome *including* those that went onto further assistance.
3. Outcomes for those who left the programme between 1 April 1999 and 31 March 2000 and outcomes achieved by 30 June 2000.
4. Work for the Dole outcomes are for those who left projects (excluding pilot projects) to end December 1999. WfD round 3 began in August 1999 and only a small number of outcomes have been measured so far for these placements.
5. This relates to the Working Nation programme, Job Clubs, which is similar to Job Search Training: outcomes for 1995-96.
6. Working Nation programmes replaced by Intensive Assistance: outcomes for 1995-96. The results show the weighted average for the seven programmes and for each programme.

Labour Market Assistance

Intensive Assistance: provides individually tailored assistance for up to two years to eligible job seekers who are more disadvantaged in the labour market, to prepare for, and obtain, sustainable employment. The level of funding is based on the job seekers' level of disadvantage. Under the first contract period there were three funding levels, 3.1, 3.2 and 3.3 with the latter category experiencing higher levels of disadvantage compared to other funding levels. Under the second contract period there are two funding levels, A and B. Funding levels 3.2 and 3.3 have been combined to form funding level B.

Job Search Training: provides training for 3 weeks in job search techniques (such as resume preparation, interview techniques and presentation skills) to give unemployed people the skills and confidence to seek and obtain employment.

Job Matching: delivers labour exchange services to job seekers including canvassing for jobs and matching and placing suitable unemployed people to these jobs, as well as preparing resumes for job seekers.

New Enterprise Incentive Scheme (NEIS): provides support and training for eligible job seekers who wish to pursue the option of self-employment.

Work for the Dole: provides assistance for job seekers to develop work habits, generic work skills and gain work experience by participating in community projects and activities, usually over a 26 week period.

Indigenous Employment Programme: replaced the Training for Aboriginals and Torres Strait Islanders Programme (TAP) and has several components. It includes Wage Assistance which is a wage subsidy paid to employers for providing employment for 26 weeks. In Structured Training and Employment Projects (STEP) employers in the private sector and regional and community based employment sponsor organisations provide at least 5 jobs, generally involving accredited training, usually a traineeship, to participants for a minimum period of 12 months.

Community Support Programme: helps disadvantaged job seekers access counselling, stable accommodation, alcohol or drug rehabilitation and other activities addressing significant needs. Participation is voluntary and assistance can be for up to two years.

Return to Work Programme: helps job seekers, who have been absent for 2 years or more due to unpaid caring responsibilities, increase their skills and confidence so they can re-enter the work force.

Definitions

Further Assistance includes job seekers who proceed to other DEWRSB or DETYA funded employment assistance of Job Search Training, Intensive Assistance, New Apprenticeships, NEIS, Work for the Dole, Green Corps, Advanced English for Migrants Programme (AEMP) and IEP - STEP and IEP - Wage Assistance.

Income support recipients: includes job seekers registered with Centrelink as unemployed and in receipt of Newstart Allowance (NSA) or job seekers aged 15 to 24 not in full-time education and in receipt of Youth Allowance (YA).

Job Matching Only (JMO): Job seekers, irrespective of income support who are eligible for Job Matching Only services but not eligible for other Job Network services. JMOs can renew their registration as unemployed every three months with either Centrelink or Job Network members.

Job Matching placements: include placements provided under Job Matching and job placements under Intensive Assistance.

Job Network Eligible (JNE): Job seekers who are receiving income support payments, and young people not in full-time study irrespective of income support. CDEP participants are eligible for Job Matching services. These people may be eligible for other Job Network services, subject to eligibility requirements.

Long term beneficiaries: Job seekers who have been registered with Centrelink as unemployed for 12 months or more and receiving income support.

NESB: migrants from a Non-English-speaking background.

Outcomes qualifying for a claim for payment: Intensive Assistance or case management outcomes where the conditions for a claim for a paid outcome have been met. An actual claim may or may not have been made. This has not been included in this report.

Placed, awaiting an outcome: Placement of an Intensive Assistance job seeker in employment or study but where the 13 week paid outcome mark has yet to be reached. This classification has not been included in this report.

Paid Interim Outcomes: Intensive Assistance outcomes where a claim for payment has been approved after placement of a job seeker in employment or study for 13 weeks. This has not been included in this report.

Paid Final Outcomes: Intensive Assistance outcomes where a claim for payment has been approved after placement of a job seeker in employment or study for 26 weeks. This has not been included in this report.

Post Assistance Income Support Outcomes: relate to the income support status of former participants three months after leaving assistance. A successful outcome represents cases where former participants are no longer receiving income support. These outcomes only apply where job seekers were receiving income support at the start of their assistance.

Short Term Beneficiaries: are job seekers who have been registered with Centrelink as unemployed for less than 12 months and in receipt of income support.

Income support recipients: includes job seekers registered with Centrelink as unemployed and in receipt of Newstart Allowance (NSA) and job seekers aged 15 to 24 not in full-time education and in receipt of Youth Allowance (Other).

Unpaid exits: Exits from Intensive Assistance that do not involve a paid outcome.

Very Long Term Beneficiaries: are job seekers who have been registered with Centrelink as unemployed and in receipt of income support for 24 months or more unless otherwise stated.

Regional Coverage

Regions used in this report are based on the 19 tender regions for the second Job Network contract period.

DEWRSB labour market regions

