

Labour Market Assistance Outcomes

Year ending March 2001

This report contains information about placements, commencements and post labour market assistance outcomes achieved for Job Network services and other programmes managed by the Department of Employment, Workplace Relations and Small Business (DEWRSB).

Main features

Outcomes

The positive outcomes (employment and/or education/training) rate achieved in the year to end March 2001, three months after leaving assistance were:

- 43% for Intensive Assistance;
- 52% for Job Search Training;
- 85% for New Enterprise Incentive Scheme (NEIS);
- 34% for Work for the Dole;
- 57% for Indigenous Employment Programme Structured Training and Employment Projects (STEP);
- 68% for Indigenous Employment Programme Wage Assistance; and
- 47% for Return to Work.

For job seekers placed in Job Matching jobs between March and December 2000, the positive outcomes rate three months after placement was 71%.

Job Vacancies

In the year to end March 2001, nearly 769,000 vacancies were notified on the Australian Job Search database.

Job Placements

In the year to end March 2001, over 318,000 job seekers were placed into Job Matching vacancies. These include placements for those receiving other services, such as Intensive Assistance.

Commencements

In the year to end March 2001, commencements by job seekers in the various types of labour market assistance included:

- 305,700 in Intensive Assistance;
- 71,900 in Job Search Training;
- 6,300 in NEIS;
- 6,400 in the Indigenous Employment Programme including STEP projects and Wage Assistance;
- 49,700 in Work for the Dole;
- 3,300 in Return to Work; and
- 16,900 in the Community Support Programme.

Income Support

In the year to end March 2001, the number of job seekers in receipt of Newstart or Youth Allowance (Other) decreased by over 36,000. While the number of job seekers who were long term recipients (ie on allowances for 12 months or more) decreased by over 45,000, the number of short term recipients increased by nearly 9,000.

In this issue

| | |
|--|---------|
| Section 1: Labour Market Assistance Outcomes | Page 3 |
| Section 2: Access to and Participation in Labour Market Assistance | Page 10 |
| Section 3: Participation and Outcomes by Region | Page 15 |
| Section 4: Impact on Income Support Recipients | Page 19 |
| Section 5: Special Articles | Page 20 |
| Technical Notes | Page 23 |

Time periods used in this report

The Department's Post Programme Monitoring (PPM) Survey measures outcomes achieved by job seekers three months after they exit labour market assistance. This report contains outcomes data for job seekers who exited assistance in the 12 months to 31 December 2000 and their post assistance outcomes achieved by 31 March 2001. Job Matching post assistance outcomes relate to job seekers who were placed in a job between 1 March and 31 December 2000 and outcomes achieved by 31 March 2001. Return to Work post assistance outcomes relate to job seekers commencing assistance between 1 February and 31 December 2000 and outcomes achieved by 31 March 2001.

Intensive Assistance post assistance outcomes should not be confused with *paid interim* or *paid final* outcomes. Post assistance outcomes are *all* employment and education outcomes while paid outcomes relate to a subset of employment and education outcomes where Job Network members receive payment for outcomes. Commencement and placement data, derived from DEWRSB and Centrelink administrative systems, relate to job seekers who were placed in a job or commenced assistance between 1 April 2000 and 31 March 2001 and 1 April 1999 and 31 March 2000.

Special Articles relate to different time periods as specified.

Special articles

From time to time special articles are included that examine topical issues related to the labour market. They are designed to examine issues not regularly addressed in this report. The special article is:

- CDEP Participation – Impacts on Labour Market Assistance Outcomes.

This article discusses the impact of excluding indigenous job seekers who return to Community Employment Development Projects (CDEP) from positive and employment outcomes. The rationale is that CDEP is funded by the Commonwealth Government and is not unsubsidised employment. The result is a reduction on employment outcomes, particularly the Indigenous Employment Programme components.

More information.....

For further information, please contact Robert Lipp (02 6121 6046) or Michael Cameron (02 6121 7240) or e-mail Beth.Lawrence@DEWRSB.gov.au.

© Commonwealth of Australia

This work is copyright. Apart from any use as permitted under the *Copyright Act 1968*, no part may be reproduced by any process without prior written permission from the Commonwealth available from Aus Info. Requests and inquiries concerning reproduction and rights should be addressed to the Manager, Legislative Services, AusInfo, GPO Box 1920, Canberra ACT 2601.

Department of Employment, Workplace Relations and Small Business
<http://www.dewrsb.gov.au/>

Section 1: Labour Market Assistance Outcomes

Post assistance labour market outcomes

Table 1.1 shows labour market outcomes and further assistance levels of all job seekers three months after leaving the various types of employment assistance. Job seekers are categorised as employed, unemployed, not in the labour force or in further assistance.

Care should be taken when comparing outcomes for current services with labour market programmes operating before the introduction of Job Network, where outcome rates were affected by *excluding* those who proceeded to further labour market programme assistance. The Technical Notes at the end of this report discuss this issue further.

In previous reports outcomes for Work for the Dole (WfD) were based on individual WfD projects. When Community Work Coordinators (CWC) were introduced in early 2000, new programme

requirements for job seekers were also implemented. Job seekers are now required to participate in WfD for up to six months in a 12 month period. This means that job seekers can participate in a number of different WfD projects and with different CWCs before completing their placement. For the purposes of PPM, job seekers are surveyed whenever they have a break between CWC placements of more than 3 months and in relation to their last CWC placement in the 12 month period.

Indigenous job seekers who return to Community Development Employment Projects (CDEP) after programme participation are no longer counted as an employment outcome. Indigenous Employment Programme (IEP) STEP outcomes have decreased by around 15 percentage points because of this change in post assistance outcomes definition. The impact on outcomes for other labour market assistance has been small. See Section 5: Special Article for further discussion on the impact of CDEP on post assistance outcomes.

Table 1.1: Post assistance labour market outcomes year to end March 2001

| Labour market assistance | Employed (%) | Unemployed (%) | Not in the Labour Force (%) | Further Assistance ¹ (%) | Exits (number) |
|---|--------------|----------------|-----------------------------|-------------------------------------|----------------|
| Intensive Assistance ² | 36.8 | 41.0 | 16.7 | 5.4 | 309,463 |
| Funding level A ³ | 42.2 | 37.0 | 15.3 | 5.5 | 210,633 |
| Funding level B ³ | 26.0 | 49.1 | 19.6 | 5.3 | 98,830 |
| Job Search Training ² | 43.6 | 44.4 | 5.7 | 6.3 | 62,998 |
| Job Matching ⁴ | 66.2 | 28.9 | 4.8 | na | 191,356 |
| Job Network Eligible (JNE) ⁵ | 62.1 | 33.8 | 4.0 | na | 121,556 |
| Job Matching Only (JMO) ⁶ | 73.9 | 19.9 | 6.2 | na | 69,800 |
| NEIS ² | 83.1 | 10.5 | 6.3 | na | 6,717 |
| SEDS ² | 35.5 | 30.1 | 11.2 | 23.1 | 929 |
| Work for the Dole ² | 26.9 | 47.1 | 7.0 | 19.1 | 17,034 |
| IEP - STEP ² | 50.7 | 39.9 | 8.0 | 1.4 | 3,071 |
| IEP - Wage Assistance ² | 63.9 | 30.0 | 4.6 | 1.5 | 1,836 |
| Return to Work ⁷ | 31.9 | 46.1 | 20.5 | 1.5 | 1,905 |

1. Further assistance includes commencements in DEWRB funded labour market assistance and DETYA programmes New Apprenticeships, Literacy and Numeracy and Advanced English for Migrants. Further assistance is not measured for Job Matching and job seekers who do not achieve an employment outcome are treated as either unemployed or not in the labour force.

2. Post assistance outcomes are measured three months after the job seeker ceases assistance and relate to job seekers who ceased Intensive Assistance, Job Search Training, NEIS, Self Employment Development Scheme (SEDS) Work for the Dole, Indigenous Employment Programme (IEP) Structured Training and Employment Projects (STEP) and IEP Wage Assistance between 1 January and 31 December 2000 and outcomes achieved by 31 March 2001. Positive and employment outcomes exclude indigenous job seekers who return to CDEP after leaving labour market assistance.

3. The funding level refers to the level of disadvantage as defined by the Job Seeker Classification Instrument (JSCI) with B being the most disadvantaged.

4. Post assistance outcomes for Job Matching relate to job seekers who were placed in a job between 1 March and 31 December 2000 and outcomes achieved by 31 March 2001. Excludes those who were placed within three months of leaving other programmes.

5. Includes Job Network Eligible (JNE) job seekers who may be eligible for all Job Network services.

6. Includes Job Matching Only (JMO) job seekers who are only eligible for Job Matching services.

7. Post assistance outcomes relate to job seekers who exited the Return to Work Programme between 1 February and 31 December 2000 and outcomes achieved by 31 March 2001.

na - not applicable.

Source: The Post Programme Monitoring Survey conducted 3 months after job seekers cease assistance.

Post assistance employment and positive outcomes

Table 1.2 shows job seekers' shares of full-time and part-time employment, education/training and positive outcomes three months after leaving different types of labour market assistance.

Education and training outcomes include job seekers who are studying at a secondary school or college, TAFE, business college or university three months after ceasing labour market assistance.

Table 1.2: Post assistance employment and positive outcomes year to end March 2001

| Labour market assistance | Full-time Employed (%) | Part-time Employed (%) | Total Employed (%) | Education & Training (%) | Positive Outcomes ¹ (%) | Exits (number) |
|---|------------------------|------------------------|--------------------|--------------------------|------------------------------------|----------------|
| Intensive Assistance ² | 16.4 | 20.4 | 36.8 | 8.3 | 43.4 | 309,463 |
| Funding level A ³ | 19.2 | 23.0 | 42.2 | 8.8 | 49.0 | 210,633 |
| Funding level B ³ | 10.7 | 15.2 | 26.0 | 7.4 | 32.3 | 98,830 |
| Job Search Training ² | 22.0 | 21.6 | 43.6 | 13.0 | 51.9 | 62,998 |
| Job Matching ⁴ | 38.7 | 27.5 | 66.2 | 11.2 | 70.7 | 191,356 |
| Job Network Eligible (JNE) ⁵ | 36.8 | 25.3 | 62.1 | 10.6 | 66.7 | 121,556 |
| Job Matching Only (JMO) ⁶ | 42.1 | 31.7 | 73.9 | 12.1 | 78.0 | 69,800 |
| NEIS ² | 52.7 | 30.4 | 83.1 | 7.2 | 85.1 | 6,717 |
| SEDS ² | 14.7 | 20.9 | 35.5 | 9.1 | 41.1 | 929 |
| Work for the Dole ² | 12.7 | 14.2 | 26.9 | 9.3 | 33.5 | 17,034 |
| IEP - STEP ² | 35.0 | 15.7 | 50.7 | 21.9 | 56.7 | 3,071 |
| IEP - Wage Assistance ² | 49.9 | 14.1 | 63.9 | 17.9 | 67.5 | 1,836 |
| Return to Work ⁷ | 4.7 | 27.2 | 31.9 | 18.9 | 47.3 | 1,905 |

1. Positive outcomes include employed and education/training outcomes. Positive outcomes are less than the sum of employed and education/training outcomes because some job seekers achieve both an employment and an education outcome.
2. Post assistance outcomes are measured three months after participants leave assistance and relate to job seekers who ceased Intensive Assistance, Job Search Training, NEIS, Self Employment Development Scheme (SEDS), Work for the Dole or Indigenous Employment Programme (IEP) Structured Training and Employment Projects (STEP) and IEP Wage Assistance between 1 January and 31 December 2000 and outcomes achieved by 31 March 2001. Positive and employment outcomes exclude indigenous job seekers who return to Community Development Employment Projects (CDEP) after leaving labour market assistance.
3. The funding level refers to the level of disadvantage as defined by the Job Seeker Classification Instrument (JSCI) with B being the most disadvantaged.
4. Post assistance outcomes for Job Matching relate to job seekers who were placed in a job between 1 March and 31 December 2000 and outcomes achieved by 31 March 2001. For job seekers who achieved a Job Matching placement within three months of leaving labour market assistance such as Job Search Training, Intensive Assistance and Work for the Dole, the outcome is excluded from Job Matching but included under the programme or service they participated in.
5. Includes Job Network Eligible (JNE) job seekers who may be eligible for all Job Network services.
6. Includes Job Matching Only (JMO) job seekers who are only eligible for Job Matching services.
7. Post assistance outcomes relate to job seekers who exited the Return to Work Programme between 1 February and 31 December 2000 and outcomes achieved by 31 March 2001.

Source: The Post Programme Monitoring Survey conducted 3 months after job seekers cease assistance.

Intensive Assistance

Table 1.3 shows post assistance outcomes for Intensive Assistance participants who exited between 1 January and 31 December 2000 and the outcomes they achieved three months later to 31 March 2001.

As a result of the transition to the Job Network's second contract period, 79,000 Intensive Assistance

participants were transferred to new Job Network members to complete their assistance. Around 53,000 eventually commenced with a new provider.

For the purposes of post programme monitoring, transferred participants will be surveyed once their period of assistance with their new provider has ceased.

Table 1.3: Intensive Assistance: Post assistance outcomes year to end March 2001¹

| Job seeker characteristics | Employment (%) | Education & Training (%) | Positive Outcomes ² (%) | Exits (number) |
|--|----------------|--------------------------|------------------------------------|----------------|
| Funding level³ | | | | |
| A | 42.2 | 8.8 | 49.0 | 210,633 |
| B | 26.0 | 7.4 | 32.3 | 98,830 |
| Age group (years) | | | | |
| 15 to 20 | 35.3 | 16.0 | 48.4 | 35,329 |
| 21 to 24 | 37.4 | 12.7 | 47.1 | 34,804 |
| 25 to 34 | 39.0 | 9.9 | 46.6 | 79,395 |
| 35 to 44 | 38.6 | 8.6 | 45.4 | 69,216 |
| 45 or more | 35.2 | 5.4 | 39.7 | 90,689 |
| Duration on income support (months) | | | | |
| 0 to less than 6 | 43.2 | 9.1 | 50.2 | 87,137 |
| 6 to less than 12 | 39.3 | 9.3 | 46.8 | 35,713 |
| 12 to less than 24 | 38.0 | 10.1 | 46.0 | 53,968 |
| 24 to less than 36 | 35.7 | 8.0 | 42.2 | 46,536 |
| 36 or more | 29.4 | 6.3 | 34.5 | 86,109 |
| Gender | | | | |
| Male | 35.5 | 6.3 | 40.9 | 214,588 |
| Female | 39.3 | 11.6 | 48.3 | 94,875 |
| Equity groups⁴ | | | | |
| Disability | 28.6 | 6.2 | 33.7 | 52,244 |
| Indigenous | 24.0 | 9.9 | 32.3 | 18,300 |
| Non-English-speaking background | 35.4 | 11.8 | 45.4 | 65,702 |
| Sole parents | 34.5 | 13.0 | 44.4 | 14,059 |
| Total | 36.8 | 8.3 | 43.4 | 309,463 |

1. Job seekers who exited Intensive Assistance between 1 January and 31 December 2000 and achieved outcomes by 31 March 2001.
2. Positive outcomes include employed and education/training outcomes. Positive outcomes are less than the sum of employed and education/training outcomes because some job seekers achieve both an employment and an education outcome. Positive and employment outcomes exclude indigenous job seekers who return to Community Development Employment Projects (CDEP) after leaving labour market assistance.
3. The funding level refers to the level of disadvantage as defined by the Job Seeker Classification Instrument (JSCI), with funding level B being the most disadvantaged.
4. Equity groups are not mutually exclusive.

Source: The Post Programme Monitoring Survey conducted 3 months after job seekers cease assistance.

Job Search Training

Table 1.4 shows post assistance outcomes for Job Search Training participants who exited assistance between 1 January and 31 December 2000 and the outcomes they achieved three months later, up to 31 March 2001.

Table 1.4: Job Search Training: Post assistance outcomes year to end March 2001¹

| Job seeker characteristics | Employment (%) | Education & Training (%) | Positive Outcomes ² (%) | Exits (number) |
|--|----------------|--------------------------|------------------------------------|----------------|
| Age group (years) | | | | |
| 15 to 20 | 44.7 | 19.8 | 57.9 | 10,973 |
| 21 to 24 | 48.5 | 17.5 | 59.6 | 11,446 |
| 25 to 34 | 46.3 | 12.0 | 53.6 | 18,859 |
| 35 to 44 | 41.4 | 10.7 | 48.3 | 13,216 |
| 45 or more | 38.0 | 8.7 | 43.9 | 8,504 |
| Duration on income support (months) | | | | |
| 0 to less than 6 | 45.6 | 13.3 | 53.9 | 36,328 |
| 6 to less than 12 | 41.3 | 11.9 | 49.1 | 14,255 |
| 12 to less than 24 | 41.3 | 13.4 | 49.9 | 8,648 |
| 24 to less than 36 | 37.8 | 16.7 | 49.2 | 2,688 |
| 36 or more | 35.9 | 8.1 | 41.6 | 1,079 |
| Gender | | | | |
| Male | 40.5 | 11.2 | 47.9 | 41,078 |
| Female | 48.5 | 16.1 | 58.7 | 21,920 |
| Equity groups³ | | | | |
| Disability | 38.3 | 10.4 | 45.2 | 3,679 |
| Indigenous | 27.3 | 12.1 | 38.9 | 505 |
| Non-English-speaking background | 39.4 | 17.2 | 51.5 | 7,497 |
| Sole Parents | 36.6 | 14.7 | 46.6 | 1,636 |
| Total | 43.6 | 13.0 | 51.9 | 62,998 |

1. Job seekers who ceased Job Search Training between 1 January and 31 December 2000 and outcomes achieved by 31 March 2001.
2. Positive outcomes include employed and education/training outcomes. Positive outcomes are less than the sum of employed and education/training outcomes because some job seekers achieve both an employment and an education outcome. Positive and employment outcomes exclude indigenous job seekers who return to Community Development Employment Projects (CDEP) after leaving labour market assistance.
3. Equity groups are not mutually exclusive.

Source: The Post Programme Monitoring Survey conducted 3 months after job seekers cease assistance.

Job Matching

Table 1.5 shows the employment outcomes achieved by job seekers who were placed in an eligible job between 1 March and 31 December 2000 and outcomes achieved three months later, up to 31 March 2001. This represents the first 10 months of Job Network's second contract period.

Outcomes for job seekers who are placed in Job Matching vacancies within three months of leaving other types of assistance (eg JST, IA etc) are not included in the Job Matching survey. Outcomes for these job seekers are included under the employment

assistance type they had previously participated in. For example, if a job seeker was placed in a Job Matching vacancy two months after completing Job Search Training, their post assistance outcome would be recorded under Job Search Training.

Job seeker characteristics of age, duration on income support, gender and equity groups are presented for Job Network Eligible (JNEs) job seekers who account for around two-thirds of all Job Matching placements. For Job Matching Only (JMO) clients only data on age, gender and whether the person is indigenous are available.

Table 1.5: Job Matching: Post assistance outcomes to end March 2001¹

| Job seeker characteristics | Employment (%) | Education & Training (%) | Positive Outcomes ² (%) | Placements ³ (number) |
|--|----------------|--------------------------|------------------------------------|----------------------------------|
| Age group (years) | | | | |
| 15 to 20 | 65.9 | 20.2 | 74.8 | 41,489 |
| 21 to 24 | 68.3 | 13.8 | 73.0 | 32,490 |
| 25 to 34 | 65.6 | 9.1 | 68.7 | 54,868 |
| 35 to 44 | 66.7 | 7.5 | 69.5 | 35,668 |
| 45 or more | 65.4 | 7.4 | 68.9 | 26,841 |
| Duration on income support (months)³ | | | | |
| 0 to less than 6 | 68.7 | 11.4 | 72.9 | 70,585 |
| 6 to less than 12 | 62.3 | 11.8 | 68.0 | 12,839 |
| 12 to less than 24 | 55.5 | 10.5 | 60.4 | 13,023 |
| 24 to less than 36 | 56.1 | 9.6 | 60.5 | 10,147 |
| 36 or more | 49.6 | 8.1 | 54.4 | 14,962 |
| Gender | | | | |
| Male | 61.9 | 8.3 | 65.6 | 115,915 |
| Female | 71.5 | 14.8 | 76.9 | 75,441 |
| Equity groups³ | | | | |
| Disability | 47.0 | 8.5 | 52.8 | 13,612 |
| Indigenous | 39.7 | 7.9 | 45.2 | 4,119 |
| Non-English-speaking background | 59.7 | 11.7 | 65.5 | 12,349 |
| Sole Parents | 61.1 | 10.6 | 65.0 | 3,309 |
| Job Network Eligible (JNE)⁴ | 62.1 | 10.6 | 66.7 | 121,556 |
| Job Matching Only (JMO)⁵ | 73.9 | 12.1 | 78.0 | 69,800 |
| Total | 66.2 | 11.2 | 70.7 | 191,356 |

1. Job Matching outcomes are for job seekers placed in an eligible Job Matching job between 1 March and 31 December 2000 and outcomes achieved by 31 March 2001. For job seekers who achieved a Job Matching placement within three months of leaving labour market assistance such as apprenticeships and traineeships, Job Search Training, Intensive Assistance and Work for the Dole, the outcome is excluded from Job Matching but included under the programme or service they participated in. Job Matching outcomes are derived from a sample survey of 10% of job seekers placed in Job Matching vacancies.
2. Positive outcomes include employed and education/training outcomes. Positive outcomes are less than the sum of employed and education/training outcomes because some job seekers achieve both an employment and an education outcome. Positive and employment outcomes exclude indigenous job seekers who return to Community Development Employment Projects (CDEP) after leaving labour market assistance.
3. Outcomes refer to Job Network Eligible (JNE) job seekers only as equity group details are not recorded for Job Matching Only (JMO) and by definition cannot be on income support. Equity groups are not mutually exclusive.
4. Includes Job Network Eligible (JNE) job seekers who may be eligible for other Job Network services.
5. Includes Job Matching Only (JMO) job seekers who are only eligible for Job Matching services.

Source: The Post Programme Monitoring Survey conducted 3 months after job seekers cease assistance.

New Enterprise Incentive Scheme

Table 1.6 shows the post assistance outcomes achieved by those who left the New Enterprise Incentive Scheme (NEIS) in the 12 months up to end December 2000 and outcomes achieved three months later, up to 31 March 2001.

Traditionally NEIS has always experienced higher outcomes compared to other types of labour market assistance. This is due in part to the careful selection of viable businesses by NEIS providers prior to the commencement in assistance, as well as the characteristics of job seekers involved.

Table 1.6: New Enterprise Incentive Scheme: Post assistance outcomes year to end March 2001¹

| Job seeker characteristics | Employment | | | Education & Training (%) | Positive Outcomes ³ (%) | Exits (number) |
|----------------------------------|--------------------------------|--------------|--------------------|--------------------------|------------------------------------|----------------|
| | Self Employed ² (%) | Employed (%) | Total Employed (%) | | | |
| Age group (years) | | | | | | |
| 24 or less | 64.8 | 19.5 | 84.2 | 10.0 | 88.1 | 627 |
| 25 to 34 | 72.6 | 13.5 | 86.1 | 8.0 | 88.1 | 2,218 |
| 35 to 44 | 72.3 | 11.3 | 83.5 | 5.8 | 85.4 | 2,214 |
| 45 or more | 67.0 | 12.3 | 79.3 | 7.4 | 81.0 | 1,658 |
| Gender | | | | | | |
| Males | 72.5 | 13.2 | 85.7 | 6.2 | 87.3 | 3,792 |
| Females | 67.7 | 12.3 | 80.0 | 8.5 | 82.5 | 2,925 |
| Equity groups⁴ | | | | | | |
| Disability | 67.1 | 6.1 | 75.9 | 6.9 | 78.8 | 705 |
| Indigenous ⁵ | na | na | na | na | na | na |
| Non-English-speaking background | 67.1 | 14.1 | 81.2 | 7.5 | 83.3 | 1,023 |
| Sole Parents ⁵ | na | na | na | na | na | na |
| Total | 70.3 | 12.8 | 83.1 | 7.2 | 85.1 | 6,717 |

1. Job seekers who left NEIS placements between 1 January and 31 December 2000 and outcomes achieved by 31 March 2001.

2. Includes a small proportion of participants who are self employed but in a business not set up under NEIS.

3. Positive outcomes include employed and education/training outcomes. Positive outcomes are less than the sum of employed and education/training outcomes because some job seekers achieve both an employment and an education outcome. Positive and employment outcomes exclude indigenous job seekers who return to Community Development Employment Projects (CDEP) after leaving labour market assistance.

4. Equity groups are not mutually exclusive.

5. Not available as the estimate is based on a small number of known outcomes.

Source: The Post Programme Monitoring Survey conducted 3 months after job seekers cease assistance.

Work for the Dole

The Work for the Dole (WfD) Programme aims to develop the work habits of participants through involving them in quality projects that are of value to the community. Employment outcomes are not part of the programme's immediate objectives but are included here as they demonstrate the success of work experience and increased job search activity.

Outcomes now relate to WfD participants referred to Community Workplace Coordinators (CWC) and are not comparable with previous estimates because outcomes were then based on individual WfD projects. When CWCs were introduced in early 2000, new programme requirements for job seekers were also implemented. Job seekers are now required to participate in WfD for up to six months over a 12 month period. This means that job seekers can participate in a number of different WfD projects and with different CWCs before completing their placement. For the purposes of PPM, job seekers are surveyed whenever they have a break between CWC placements of more than 3 months and in relation to their last CWC placement in the 12 month period.

Employment outcomes for CWCs at 27% are similar to that achieved for WfD projects in the past, but positive outcomes have fallen from 36% to 34%. A contributing factor to this fall could be the increase in the proportion of long term unemployed participating in WfD under the CWC model.

The proportion of job seekers accessing further assistance within three months of leaving WfD has increased under the CWC model to nearly 20% (as shown in Table 1.1). Approximately 17% of all WfD participants proceed onto Intensive Assistance.

Job seekers who have been receiving income support for longer periods of time are more likely to proceed to further assistance. Around 30% of those on income support for three years or more proceeded to further employment assistance, with around 26% going to Intensive Assistance.

Job seekers aged 35 years or more who participate in Work for the Dole are volunteers.

Table 1.7: Work for the Dole: Post Assistance Outcomes year to end March 2001¹

| Job seeker characteristics | Employment (%) | Education & Training (%) | Positive Outcomes ² (%) | Exits (number) |
|--|----------------|--------------------------|------------------------------------|----------------|
| Age group (years) | | | | |
| 20 or less | 30.1 | 13.4 | 40.3 | 3,704 |
| 21 to 24 | 29.5 | 10.6 | 36.8 | 5,491 |
| 25 to 34 | 23.0 | 7.0 | 27.9 | 7,092 |
| 35 to 44 | 29.8 | 7.1 | 35.3 | 503 |
| 45 or more | 26.1 | 4.2 | 28.7 | 244 |
| Duration on income support (months) | | | | |
| 0 to less than 6 | 39.1 | 15.0 | 49.9 | 1,236 |
| 6 to less than 12 | 36.5 | 13.2 | 45.3 | 2,261 |
| 12 to less than 24 | 31.8 | 10.1 | 38.9 | 3,814 |
| 24 to less than 36 | 29.1 | 9.8 | 36.2 | 3,591 |
| 36 or more | 17.2 | 6.2 | 21.8 | 6,132 |
| Gender | | | | |
| Males | 24.5 | 7.5 | 30.2 | 11,895 |
| Females | 31.4 | 12.8 | 39.8 | 5,139 |
| Equity groups³ | | | | |
| Disability | 19.4 | 8.0 | 25.8 | 2,196 |
| Indigenous | 12.7 | 10.3 | 21.6 | 817 |
| Non-English-speaking background | 28.6 | 10.8 | 37.1 | 1,337 |
| Sole Parents | na | na | na | na |
| Total | 26.9 | 9.3 | 33.5 | 17,034 |

1. Job seekers who left a Work for the Dole project between 1 January and 31 December 2000 and outcomes achieved by 31 March 2001.
 2. Positive outcomes include employed and education/training outcomes. Positive outcomes are less than the sum of employed and education/training outcomes because some job seekers achieve both an employment and an education outcome. Positive and employment outcomes exclude indigenous job seekers who return to Community Development Employment Projects (CDEP) after leaving labour market assistance.
 3. Equity groups are not mutually exclusive.
- Na – not applicable.

Source: The Post Programme Monitoring Survey conducted 3 months after job seekers cease assistance.

Section 2: Access to and Participation in Labour Market Assistance

Type of labour market assistance

Table 2.1 shows the commencements in Job Network services and other types of labour market assistance during 1999 and 2000. The table also shows the proportion of commencements by job seekers who had been receiving income support [Newstart and Youth Allowance (Other)] for 12 months or more (ie long term unemployed).

Of the 79,000 Intensive Assistance participants transferred to a new Job Network member to complete their assistance under the second contract period, around 53,000 have commenced assistance. As a payment is made to the new provider, they are treated as a new commencement in this participation

measure.

In the year to end March 2000, commencements in Work for the Dole are based on individual projects. In the year to end March 2001 commencements are based on new programme requirements including the introduction of Community Work Coordinators (CWCs) and job seekers being required to participate in WfD for up to six months over a 12-month period. This means that job seekers can participate in a number of different WfD projects and with different CWCs before completing their placement. Each time a job seeker starts with a CWC, a new commencement is recorded.

Table 2.1: Participation by type of labour market assistance in each of the past two years¹

| | Year to end March 2000 | | Year to end March 2001 | |
|------------------------------------|---------------------------|--|---------------------------|--|
| | Commencements (number) | Proportion of long term recipients ² (%) | Commencements (number) | Proportion of long term recipients ² (%) |
| Labour market assistance | | | | |
| Intensive Assistance ³ | 278,452 | 64.8 | 305,653 | 62.0 |
| Job Search Training | 50,498 | 29.9 | 71,909 | 16.4 |
| Job Matching ⁴ | 297,510 | 28.8 | 318,204 | 26.0 |
| Job Network Eligible (JNE) | 221,321 | 39.7 | 207,767 | 35.7 |
| Job Matching Only (JMO) | 70,498 | na | 106,695 | na |
| NEIS | 7,108 | na | 6,281 | na |
| Self Employment Development Scheme | 991 | 45.4 | 1,474 | 59.8 |
| Work for the Dole | 36,830 | 76.0 | 49,701 | 79.0 |
| IEP - STEP | 3,158 | 36.4 | 3,915 | 33.3 |
| IEP - Wage Assistance | 1,115 | 47.0 | 2,486 | 39.7 |
| Community Support Programme | 6,048 | 62.5 | 16,860 | 65.7 |
| Return to Work ⁵ | na | na | 3,278 | na |

1. Commencement or placement of job seekers in labour market assistance funded by DEWRSB for the two years of 1 April 1999 to 31 March 2000 and 1 April 2000 to 31 March 2001.
 2. The proportion of job seekers who have been registered as unemployed and have been receiving income support including Newstart, Youth Allowance (Other) or other types of income support for 12 months or more.
 3. Figures for the year to end March 2001 are inflated by 53,000 job seekers who transferred between providers as a result of the transition to the second contract period.
 4. Job Matching total is greater than the sum of JNE and JMO as it includes commencements in apprenticeships and traineeships. Job Network Eligible (JNE) are job seekers who may be eligible for all Job Network services. Job Matching Only (JMO) are job seekers who are only eligible for Job Matching services.
 5. Return to Work Programme commenced in February 2000 and many participants are not on income support.
- na – not available.

Source: DEWRSB administrative systems. Community Support Programme commencements provided by Centrelink.

Access to Job Matching

Access to services and programmes by job seekers with different characteristics will depend on their eligibility and on their assessed capacity to benefit from the assistance provided. To ensure equity of access for job seekers with different characteristics, the proportion in assistance is compared to their proportion of the eligible population.

Job seekers with particular characteristics may be under-represented in some types of assistance but over-represented in others. Hence, it is important to look at all types of assistance in assessing equity of assistance. For example, while indigenous job seekers may be under-represented in some types of assistance, other more specific programmes are directed towards addressing their particular needs.

Table 2.2 shows, for a range of job seeker characteristics for Job Network Eligible job seekers, the proportion that were eligible for services on 31 March 2001 and the proportion that received a placement under Job Matching in the year to end March 2001. For example, 32% of those on all income support types for less than six months accounted for nearly half of all Job Matching placements during this time period.

This is shown for all income support types and separately for those on the activity tested payments Newstart and Youth Allowance (Other). All income support types include some job seekers who are not subject to the activity test and volunteer to participate in Job Network services.

Table 2.2: Access to Job Matching by JNE job seeker characteristics year to end March 2001¹

| Job seeker characteristics | All income support types | | Newstart/Youth Allowance (Other) | |
|--|---|--|---|--|
| | Eligibility for Job Matching ² (%) | Placement in Job Matching ² (%) | Eligibility for Job Matching ³ (%) | Placement in Job Matching ³ (%) |
| Age group (years) | | | | |
| 15 to 20 | 26.5 | 28.3 | 12.6 | 16.8 |
| 21 to 24 | 12.6 | 17.4 | 15.7 | 19.3 |
| 25 to 34 | 22.5 | 26.0 | 26.8 | 30.4 |
| 35 to 44 | 17.9 | 15.8 | 20.7 | 18.2 |
| 45 or more | 20.6 | 12.5 | 24.3 | 15.3 |
| Total | 100.0 | 100.0 | 100.0 | 100.0 |
| Duration on income support (months) | | | | |
| 0 to less than 6 | 32.0 | 49.7 | 29.7 | 41.1 |
| 6 to less than 12 | 16.6 | 14.4 | 14.7 | 15.8 |
| 12 to less than 24 | 14.2 | 12.2 | 15.3 | 13.8 |
| 24 to less than 36 | 15.7 | 8.2 | 10.7 | 9.7 |
| 36 or more | 21.5 | 15.5 | 29.6 | 19.5 |
| Total | 100.0 | 100.0 | 100.0 | 100.0 |
| Educational attainment | | | | |
| Less than Year 10 | 30.9 | 24.0 | 25.4 | 20.1 |
| Year 10 | 34.7 | 39.5 | 37.0 | 41.6 |
| Year 12 | 17.4 | 21.0 | 17.8 | 20.9 |
| Post secondary | 17.0 | 15.6 | 19.8 | 17.4 |
| Total | 100.0 | 100.0 | 100.0 | 100.0 |
| Gender | | | | |
| Male | 62.9 | 64.1 | 69.3 | 68.0 |
| Female | 37.1 | 35.9 | 30.7 | 32.0 |
| Total | 100.0 | 100.0 | 100.0 | 100.0 |
| Equity groups⁴ | | | | |
| Disability | 17.1 | 9.6 | 19.1 | 10.8 |
| Indigenous | 5.2 | 3.1 | 5.8 | 3.3 |
| Non-English-speaking background | 13.2 | 9.5 | 15.1 | 10.7 |
| Sole parents | 4.2 | 2.2 | na | na |

1. Placements in Job Matching vacancies between 1 April 2000 and 31 March 2001.

2. Includes job seekers registered with Centrelink as unemployed and in receipt of the activity tested allowances Newstart and Youth Allowance (Other) or other types of income support payments not subject to activity test requirements at 31 March 2001.

3. Job seekers in receipt of Newstart and Youth Allowance (Other) at 31 March 2001.

4. Equity groups are not mutually exclusive.

na – not applicable

Source: DEWRSB administrative systems.

Access to Job Search Training

Table 2.3 shows, for a range of job seeker characteristics, the proportion of the population that were eligible for Job Search Training compared to the proportion commencing Job Search Training. This is shown for all income support categories and separately for those on the activity tested payments Newstart and Youth Allowance (Other).

All income support types include job seekers who are not subject to the activity test and volunteer to participate in Job Network services.

Only those job seekers assessed as eligible for Job Search Training under the Job Seeker Classification Instrument (JSCI) have been included in the eligible population.

Around 10% of all income support types, for example, were aged 45 years or more and they accounted for over 13% off all Job Search Training commencements in the year to end March 2001.

Table 2.3: Access to Job Search Training by job seeker characteristics year to end March 2001¹

| Job seeker characteristics | All income support categories | | Newstart/Youth Allowance (Other) | |
|--|---|---|---|---|
| | Eligibility for Job Search Training ² (%) | Commencement in Job Search Training ² (%) | Eligibility for Job Search Training ³ (%) | Commencement in Job Search Training ³ (%) |
| Age group (years) | | | | |
| 15 to 20 | 28.0 | 17.0 | 17.3 | 15.3 |
| 21 to 24 | 19.4 | 18.5 | 23.0 | 19.1 |
| 25 to 34 | 26.4 | 29.9 | 30.4 | 30.7 |
| 35 to 44 | 16.7 | 21.2 | 18.5 | 21.2 |
| 45 or more | 9.5 | 13.4 | 10.7 | 13.6 |
| Total | 100.0 | 100.0 | 100.0 | 100.0 |
| Duration on income support (months) | | | | |
| 0 to less than 6 | 52.2 | 61.4 | 54.5 | 61.6 |
| 6 to less than 12 | 19.3 | 22.2 | 20.6 | 22.1 |
| 12 to less than 24 | 12.0 | 11.5 | 15.1 | 11.3 |
| 24 to less than 36 | 5.6 | 3.1 | 5.6 | 3.2 |
| 36 or more | 11.0 | 1.8 | 4.1 | 1.9 |
| Total | 100.0 | 100.0 | 100.0 | 100.0 |
| Educational attainment | | | | |
| Less than Year 10 | 9.1 | 1.3 | 9.0 | 1.3 |
| Year 10 | 34.3 | 35.7 | 33.3 | 35.4 |
| Year 12 | 27.7 | 27.5 | 25.5 | 27.1 |
| Post secondary | 28.9 | 35.6 | 32.2 | 36.2 |
| Total | 100.0 | 100.0 | 100.0 | 100.0 |
| Gender | | | | |
| Male | 62.1 | 66.2 | 62.2 | 67.6 |
| Female | 37.9 | 33.8 | 33.8 | 32.4 |
| Total | 100.0 | 100.0 | 100.0 | 100.0 |
| Equity groups⁴ | | | | |
| Disability | 7.2 | 5.5 | 7.8 | 5.6 |
| Indigenous | 0.8 | 0.5 | 0.9 | 0.5 |
| Non-English-speaking background | 7.3 | 10.3 | 7.8 | 10.4 |
| Sole parents | 3.3 | 1.4 | na | na |

1. Commencement of job seekers in Job Search Training between 1 April 2000 and 31 March 2001.

2. Includes job seekers registered with Centrelink as unemployed and in receipt of the activity tested allowances Newstart and Youth Allowance (Other) or other types of income support payments not subject to activity test requirements at 31 March 2001.

3. Job seekers in receipt of Newstart and Youth Allowance (Other) at 31 March 2001.

4. Equity groups are not mutually exclusive.

na – not applicable

Source: DEWRSB administrative systems.

Access to Intensive Assistance

Table 2.4 shows, for a range of job seeker characteristics, the proportion of the population eligible for Intensive Assistance compared with the proportion commencing Intensive Assistance. This is shown for all income support categories and separately for those on the activity tested payments Newstart and Youth Allowance (Other).

Those on income support include job seekers who are not subject to the activity test and volunteer to participate in Job Network services.

As with Job Search Training, only those assessed as eligible for Intensive Assistance under the Job Seeker

Classification Instrument (JSCI) have been included in the eligible population.

For example, over 13% of all income support types, for example, were aged 15 to 20 years and they accounted for over 11% of all Intensive Assistance commencements in the year to end March 2001.

Job seekers assessed as having higher levels of disadvantage may be under-represented in Intensive Assistance but are able to access the Community Support Programme and programmes administered by the Department of Family and Community Services for people with disabilities. This is reflected in the lower levels of access of job seekers with a disability and those in receipt of income support for 3 years or more.

Table 2.4: Access to Intensive Assistance by job seeker characteristics year to end March 2001¹

| Job seeker characteristics | All income support categories | | Newstart/Youth Allowance (Other) | |
|--|--|--|--|--|
| | Eligibility for Intensive Assistance ² (%) | Commencement in Intensive Assistance ² (%) | Eligibility for Intensive Assistance ³ (%) | Commencement in Intensive Assistance ³ (%) |
| Age group (years) | | | | |
| 15 to 20 | 13.3 | 11.2 | 10.2 | 10.4 |
| 21 to 24 | 11.1 | 11.3 | 11.8 | 11.5 |
| 25 to 34 | 23.9 | 24.7 | 24.7 | 24.8 |
| 35 to 44 | 21.1 | 22.6 | 21.5 | 22.5 |
| 45 or more | 30.6 | 30.2 | 31.7 | 30.7 |
| Total | 100.0 | 100.0 | 100.0 | 100.0 |
| Duration on income support (months) | | | | |
| 0 to less than 6 | 14.6 | 27.5 | 13.7 | 26.1 |
| 6 to less than 12 | 13.3 | 10.4 | 10.8 | 10.4 |
| 12 to less than 24 | 15.5 | 13.5 | 15.6 | 13.3 |
| 24 to less than 36 | 25.6 | 13.0 | 14.2 | 13.1 |
| 36 or more | 31.0 | 35.5 | 45.7 | 37.0 |
| Total | 100.0 | 100.0 | 100.0 | 100.0 |
| Educational attainment | | | | |
| Less than Year 10 | 34.4 | 31.1 | 34.5 | 31.2 |
| Year 10 | 40.3 | 41.0 | 39.7 | 40.7 |
| Year 12 | 13.4 | 14.9 | 13.5 | 14.9 |
| Post secondary | 11.9 | 13.1 | 12.3 | 13.2 |
| Total | 100.0 | 100.0 | 100.0 | 100.0 |
| Gender | | | | |
| Male | 67.9 | 70.5 | 71.3 | 72.3 |
| Female | 32.1 | 29.5 | 28.7 | 27.7 |
| Total | 100.0 | 100.0 | 100.0 | 100.0 |
| Equity groups⁴ | | | | |
| Disability | 19.8 | 14.8 | 20.3 | 14.9 |
| Indigenous | 8.1 | 6.5 | 7.7 | 6.3 |
| Non-English-speaking background | 18.9 | 20.9 | 19.3 | 21.0 |
| Sole parents | 3.5 | 2.0 | na | na |

1. Commencement of job seekers in Intensive Assistance between 1 April 2000 and 31 March 2001.

2. Includes job seekers registered with Centrelink as unemployed and in receipt of the activity tested allowances Newstart and Youth Allowance (Other) or other types of income support payments not subject to activity test requirements at 31 March 2001.

3. Job seekers in receipt of Newstart and Youth Allowance (Other) at 31 March 2001.

4. Equity groups are not mutually exclusive.

na – not applicable

Source: DEWRSB administrative systems.

Participation in Work for the Dole

Table 2.5 shows, for a range of job seeker characteristics, the proportion in the eligible population and the proportion commencing Work for the Dole. This is shown only for those on the activity tested payments Newstart and Youth Allowance (Other).

Job seekers aged 35 years or more on Newstart Allowance may volunteer to participate in Work for the Dole.

Job seekers are required to participate in WfD for up to six months over a 12-month period. This means that job seekers can participate in a number of different WfD projects and with different CWCs before completing their placement. Each time a job seeker starts with a CWC, a new commencement is recorded

Table 2.5: Access to Work for the Dole by job seeker characteristics year to end March 2001¹

| Job seeker characteristics | Eligibility for Work for Dole ² (%) | Commencement in Work for the Dole (%) |
|--|---|--|
| Age group (years) | | |
| 15 to 20 | 13.5 | 22.4 |
| 21 to 24 | 15.8 | 32.9 |
| 25 to 34 | 26.4 | 41.5 |
| 35 to 44 | 20.4 | 2.1 |
| 45 or more | 23.9 | 1.0 |
| Total | 100.0 | 100.0 |
| Duration on income support (months) | | |
| 0 to less than 6 | 32.5 | 7.1 |
| 6 to less than 12 | 14.2 | 13.8 |
| 12 to less than 24 | 15.9 | 22.5 |
| 24 to less than 36 | 10.9 | 20.6 |
| 36 or more | 26.5 | 35.9 |
| Total | 100.0 | 100.0 |
| Educational attainment | | |
| Less than Year 10 | 24.7 | 20.4 |
| Year 10 | 36.7 | 39.5 |
| Year 12 | 18.3 | 26.2 |
| Post secondary | 20.2 | 14.0 |
| Total | 100.0 | 100.0 |
| Gender | | |
| Male | 69.1 | 70.4 |
| Female | 30.9 | 29.6 |
| Total | 100.0 | 100.0 |
| Equity groups³ | | |
| Disability | 19.3 | 11.9 |
| Indigenous | 6.0 | 3.5 |
| Non-English-speaking background | 15.2 | 7.8 |
| Sole parents | na | na |

1. Commencement of job seekers in Work for the Dole between 1 April 2000 and 31 March 2001.

2. Job seekers receiving Newstart and Youth Allowance (Other) as at 31 March 2001.

3. Equity groups are not mutually exclusive.

na – not applicable.

Source: DEWRSB administrative systems.

Section 3: Participation and Outcomes by Region

Participation in labour market assistance by region

This section presents data on participation by job seekers in labour market assistance for the DEWRSB Labour Market Regions used during the second contract period for Job Network. A map of DEWRSB regions is included in the Technical Notes of this report.

Reporting at a regional level is restricted to the main types of Job Network assistance and Work for the Dole.

Table 3.1 provides details of placements in Job

Matching jobs and commencements in Job Search Training, Intensive Assistance and Work for the Dole.

Intensive Assistance commencements include 53,000 participants who transferred to a new Job Network member to complete their assistance under the second contract period.

The number of placements and commencements in the various types of labour market assistance will depend on the size of the region, labour market conditions and the relative disadvantage of job seekers in the region.

Table 3.1: Commencements in labour market assistance by region year to end March 2001¹

| DEWRSB Region | Job Matching (JNE) ² (Number) | Job Search Training (Number) | Intensive Assistance (Number) | Work for the Dole (Number) |
|------------------------------|--|------------------------------|-------------------------------|----------------------------|
| Sydney | 27,074 | 12,784 | 49,066 | 6,149 |
| Hunter and North Coast | 10,649 | 4,216 | 26,038 | 3,491 |
| Illawarra and SE NSW | 5,280 | 2,605 | 8,249 | 1,848 |
| Western NSW | 9,035 | 1,777 | 8,282 | 1,560 |
| Riverina | 3,695 | 891 | 3,290 | 624 |
| New South Wales | 55,733 | 22,273 | 94,925 | 13,672 |
| Melbourne | 30,039 | 11,243 | 49,718 | 8,112 |
| Eastern Victoria | 7,053 | 1,906 | 8,744 | 1,151 |
| Western Victoria | 11,001 | 3,132 | 17,312 | 1,975 |
| Victoria | 48,093 | 16,281 | 75,774 | 11,238 |
| Brisbane | 31,891 | 11,659 | 39,958 | 8,910 |
| Southern Queensland | 9,574 | 1,842 | 10,884 | 1,625 |
| Central and Northern QLD | 14,914 | 3,573 | 13,555 | 2,660 |
| Queensland | 56,379 | 17,074 | 64,397 | 13,195 |
| Perth | 11,557 | 5,562 | 18,069 | 3,652 |
| South Western Australia | 3,262 | 810 | 3,347 | 735 |
| Greater Western Australia | 2,589 | 416 | 3,330 | 444 |
| Western Australia | 17,408 | 6,788 | 24,746 | 4,831 |
| Adelaide | 12,317 | 4,550 | 20,151 | 3,661 |
| South Australia Country | 7,602 | 1,267 | 8,174 | 1,095 |
| South Australia | 19,919 | 5,817 | 28,325 | 4,756 |
| Tasmania | 5,754 | 1,978 | 12,229 | 1,165 |
| Northern Territory | 2,621 | 499 | 2,590 | 200 |
| Australian Capital Territory | 1,860 | 1,199 | 2,667 | 644 |
| Australia | 207,767 | 71,909 | 305,653 | 49,701 |

1. Commencement or placement in labour market assistance between 1 April 2000 and 31 March 2001.

2. Job Matching for JNE job seeker placements are included while JMO job seeker placements have been excluded.

Source: DEWRSB administrative systems.

Job Matching placements by region

Table 3.2 shows the number of vacancies notified on the Australian Job Search (AJS) database for the month of March 2001 by DEWRSB region, State and Territory and nationally.

In addition to the 65,167 new vacancies lodged on the AJS, some vacancies lodged in the preceding month remained active during March.

In total, Job Network members listed over 768,892 job vacancies on the Australian Job Search database in the year to end March 2001.

Also shown are Job Matching placements for both Job Network eligible (JNE) and Job Matching only (JMO) job seekers in each region in the year to end March 2001. JNEs accounted for one-third of all Job Matching placements.

Table 3.2: Job Matching placements by region year to end March 2001

| DEWRSB Region | Vacancies notified on AJS in March 2001 ¹ (Number) | Job Matching ² (number) | | | Share of placements filled by JMO clients (%) |
|------------------------------|--|---------------------------------------|------------------|--------------------|--|
| | | JNE ³ | JMO ⁴ | Total ⁵ | |
| Sydney | 12,918 | 27,074 | 14,882 | 42,251 | 35.2 |
| Hunter and North Coast | 3,089 | 10,649 | 4,039 | 14,958 | 27.0 |
| Illawarra and SE NSW | 1,597 | 5,280 | 2,830 | 8,247 | 34.3 |
| Western NSW | 2,254 | 9,035 | 7,029 | 16,198 | 43.4 |
| Riverina | 1,102 | 3,695 | 2,677 | 6,497 | 41.2 |
| New South Wales | 20,960 | 55,733 | 31,457 | 88,151 | 35.7 |
| Melbourne | 10,514 | 30,039 | 13,832 | 44,633 | 31.0 |
| Eastern Victoria | 2,031 | 7,053 | 4,748 | 11,898 | 39.9 |
| Western Victoria | 2,932 | 11,001 | 5,967 | 17,311 | 34.5 |
| Victoria | 15,477 | 48,093 | 24,547 | 73,842 | 33.2 |
| Brisbane | 8,999 | 31,891 | 14,914 | 47,276 | 31.5 |
| Southern Queensland | 2,549 | 9,574 | 5,171 | 14,854 | 34.8 |
| Central and Northern QLD | 3,978 | 14,914 | 9,112 | 24,126 | 37.8 |
| Queensland | 15,526 | 56,379 | 29,197 | 86,256 | 33.8 |
| Perth | 3,468 | 11,557 | 4,519 | 16,217 | 27.9 |
| South Western Australia | 750 | 3,262 | 1,923 | 5,242 | 36.7 |
| Greater Western Australia | 998 | 2,589 | 2,864 | 5,466 | 52.4 |
| Western Australia | 5,216 | 17,408 | 9,306 | 26,925 | 34.6 |
| Adelaide | 3,152 | 12,317 | 3,592 | 16,217 | 22.1 |
| South Australia Country | 1,661 | 7,602 | 3,619 | 11,371 | 31.8 |
| South Australia | 4,813 | 19,919 | 7,211 | 27,588 | 26.1 |
| Tasmania | 1,579 | 5,754 | 2,121 | 8,052 | 26.3 |
| Northern Territory | 844 | 2,621 | 1,952 | 4,583 | 42.6 |
| Australian Capital Territory | 752 | 1,860 | 904 | 2,817 | 32.1 |
| Australia | 65,167 | 207,767 | 106,695 | 318,204 | 33.5 |

1. Vacancies notified on the Australian Job Search database for the month of March 2001.
2. Placements in eligible Job Matching vacancies between 1 April 2000 and 31 March 2001.
3. Job Network Eligible (JNE) job seekers who may be eligible for all Job Network services.
4. Job Matching Only (JMO) are job seekers who are eligible only for Job Matching services.
5. Total is greater than the sum of JNE and JMO placements as this figure includes apprenticeships and traineeships.

Source: DEWRSB administrative systems.

Labour market assistance by region

Table 3.3 shows the proportion of Newstart and Youth Allowance (Other) recipients as at March 2001 compared to the proportion of Job Matching job placements for Job Network eligible job seekers and

commencements in Job Search Training, Intensive Assistance and Work for the Dole. This is provided on a DEWRSB regional and State and Territory basis.

Table 3.3: Comparison of labour market assistance by region year to end March 2001¹

| DEWRSB Region | Newstart/ Youth Allowance (Other) recipients ² (%) | Job Matching (JNE) ³ (%) | Job Search Training (%) | Intensive Assistance (%) | Work for the Dole (%) |
|------------------------------|---|-------------------------------------|-------------------------|--------------------------|-----------------------|
| Sydney | 14.1 | 13.0 | 17.8 | 16.1 | 12.4 |
| Hunter and North Coast | 8.2 | 5.1 | 5.9 | 8.5 | 7.0 |
| Illawarra and SE NSW | 3.1 | 2.5 | 3.6 | 2.7 | 3.7 |
| Western NSW | 2.9 | 4.3 | 2.5 | 2.7 | 3.1 |
| Riverina | 1.1 | 1.8 | 1.2 | 1.1 | 1.3 |
| New South Wales | 29.4 | 26.8 | 31.0 | 31.1 | 27.5 |
| Melbourne | 15.5 | 14.5 | 15.6 | 16.3 | 16.3 |
| Eastern Victoria | 2.5 | 3.4 | 2.7 | 2.9 | 2.3 |
| Western Victoria | 4.2 | 5.3 | 4.4 | 5.7 | 4.0 |
| Victoria | 22.2 | 23.1 | 22.6 | 24.8 | 22.6 |
| Brisbane | 14.5 | 15.3 | 16.2 | 13.5 | 17.9 |
| Southern Queensland | 3.2 | 4.6 | 2.6 | 3.6 | 3.3 |
| Central and Northern QLD | 5.5 | 7.2 | 5.0 | 4.4 | 5.4 |
| Queensland | 23.2 | 27.1 | 23.7 | 21.1 | 26.5 |
| Perth | 6.9 | 5.6 | 7.7 | 5.9 | 7.3 |
| South Western Australia | 1.4 | 1.6 | 1.1 | 1.1 | 1.5 |
| Greater Western Australia | 1.4 | 1.2 | 0.6 | 1.1 | 0.9 |
| Western Australia | 9.7 | 8.4 | 9.4 | 8.1 | 9.7 |
| Adelaide | 6.4 | 5.9 | 6.3 | 6.6 | 7.4 |
| South Australia Country | 2.4 | 3.7 | 1.8 | 2.7 | 2.2 |
| South Australia | 8.8 | 9.6 | 8.1 | 9.3 | 9.6 |
| Tasmania | 3.5 | 2.8 | 2.8 | 7.0 | 2.3 |
| Northern Territory | 2.2 | 1.3 | 0.7 | 0.8 | 0.4 |
| Australian Capital Territory | 1.0 | 0.9 | 1.7 | 0.9 | 1.3 |
| Australia | 100.0 | 100.0 | 100.0 | 100.0 | 100.0 |

1. Commencement or placement of job seekers in labour market assistance between 1 April 2000 and 31 March 2001.

2. Job Seekers receiving Newstart or Youth Allowance (Other) as at 31 March 2001.

3. Includes Job Network Eligible(JNE) job seekers who may be eligible for all Job Network services and excludes Job Matching Only (JMO) job seekers who are only eligible for Job Matching services.

Source: DEWRSB administrative systems.

Employment outcomes by region

Table 3.4 shows for job seekers who ceased assistance between 1 January and 31 December 2000 and unsubsidised employment outcomes achieved by 31 March 2001. Employment outcomes are for Job Matching, Job Search Training, Intensive Assistance and Work for the Dole.

Job Matching includes Job Network Eligible and Job Matching Only job seekers. Outcomes are presented on a DEWRSB regional, State and Territory and national basis.

Table 3.4: Regional labour market post assistance employment outcomes year to end March 2001¹

| DEWRSB Region | Job Matching (%) ² | Job Search Training ³ (%) | Intensive Assistance ³ (%) | Work for the Dole ³ (%) |
|------------------------------|-------------------------------|--------------------------------------|---------------------------------------|------------------------------------|
| Sydney | 66.1 | 41.8 | 35.4 | 27.0 |
| Hunter and North Coast | 64.6 | 40.5 | 33.8 | 20.7 |
| Illawarra and SE NSW | 72.3 | 45.9 | 34.5 | 20.8 |
| Western NSW | 59.5 | 40.3 | 29.0 | 25.6 |
| Riverina | 67.8 | 48.3 | 33.8 | 28.9 |
| New South Wales | 65.5 | 42.1 | 34.3 | 24.2 |
| Melbourne | 66.6 | 43.8 | 37.8 | 32.6 |
| Eastern Victoria | 70.2 | 43.8 | 37.0 | 28.5 |
| Western Victoria | 69.3 | 47.1 | 41.4 | 23.4 |
| Victoria | 67.8 | 44.4 | 38.5 | 30.0 |
| Brisbane | 67.4 | 43.2 | 38.7 | 30.1 |
| Southern Queensland | 65.6 | 44.8 | 35.5 | 21.7 |
| Central and Northern QLD | 64.9 | 44.4 | 38.7 | 27.5 |
| Queensland | 66.5 | 43.6 | 38.2 | 28.2 |
| Perth | 65.4 | 44.2 | 40.6 | 23.7 |
| South Western Australia | 64.9 | 42.5 | 40.2 | 24.1 |
| Greater Western Australia | 61.6 | 52.7 | 31.8 | 31.0 |
| Western Australia | 64.7 | 44.5 | 39.3 | 24.7 |
| Adelaide | 64.6 | 42.7 | 36.8 | 27.3 |
| South Australia Country | 60.9 | 43.4 | 36.4 | 28.4 |
| South Australia | 63.0 | 42.9 | 36.7 | 27.8 |
| Tasmania | 71.4 | 44.7 | 36.4 | 15.6 |
| Northern Territory | 56.4 | 41.7 | 29.2 | 21.0 |
| Australian Capital Territory | 79.7 | 51.3 | 40.0 | 37.5 |
| Australia | 66.2 | 43.6 | 36.8 | 26.9 |

1. Employment outcomes exclude indigenous job seekers who return to a Community Development Employment Projects (CDEP) after leaving labour market assistance.
2. Job Matching outcomes are for job seekers placed in an eligible Job Matching job between 1 March and 31 December 2000 and outcomes achieved by 31 March 2001. For job seekers who achieved a Job Matching placement within three months of leaving labour market assistance such as Job Search Training, Intensive Assistance and Work for the Dole, the outcome is excluded from Job Matching but included under the programme or service they participated in. Outcomes for apprenticeships and traineeships are excluded.
3. Post assistance employment outcomes relate to job seekers who ceased Intensive Assistance, Job Search Training or Work for the Dole between 1 January and 31 December 2000 and outcomes achieved by 31 March 2001.

Source: The Post Programme Monitoring Survey conducted 3 months after job seekers cease assistance.

Section 4: Impact on Income Support Recipients

Number of income support recipients

An important goal of employment assistance is to reduce or remove employment barriers experienced by job seekers so they can compete effectively for jobs. Higher levels of employment assistance are provided to the most disadvantaged job seekers.

While this report focuses mainly on the outcomes achieved by individual forms of assistance, it is also important to note that other factors, such as administrative changes and economic conditions, also have a significant impact on the number of income support recipients.

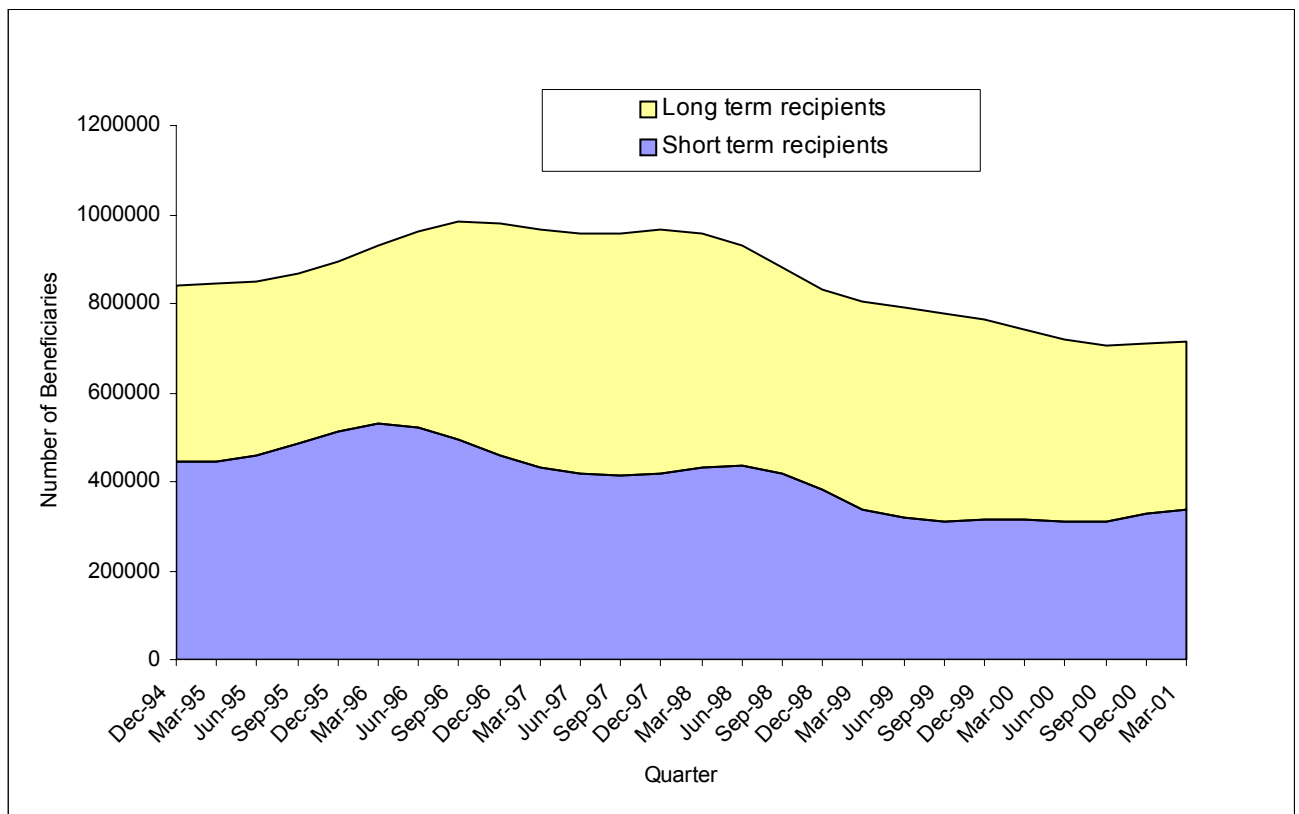
Figure 4.1 shows the changes over time in the number of short and long term income support recipients. Many long term recipients (in receipt of Newstart and Youth Allowance (Other) for 12 months or more) will have had a job at some time

over the last 12 months. These job seekers are reclassified as short term recipients only if they remain totally off benefits for a continuous period of more than 13 weeks.

Hence, long term recipients should not be confused with the long term unemployed as defined by the Australian Bureau of Statistics. The long term unemployed are people currently looking for work who have not had a full-time job that lasted for 2 weeks or more in the last year.

Data from the Department of Family and Community Services show that in the 12 months to the end of March 2001, the number of people in receipt of Newstart or Youth Allowance (Other) decreased by over 36,500 to around 672,700 job seekers. While the number of job seekers who were long term recipients decreased by over 45,000, the number of short term recipients increased by nearly 9,000.

Figure 4.1: Number of Income Support Recipients¹



1. Data from DEWRSB administrative systems and is seasonally adjusted and smoothed. Figures quoted in the text are from the Department of Family and Community Services: "Labour Market and Related Payments a monthly profile, March 2001".

Data sources

The Department uses a number of data sources to determine the outcomes achieved by job seekers during and after they have ceased labour market assistance.

Post Programme Monitoring (PPM) surveys have been undertaken since 1987 and used to assess the employment and education status of former programme participants three months after they exit assistance. The PPM survey attempts a full enumeration of all former programme participants except in the case of Job Matching where a sample of around 10% of job placements are followed up. Job seekers who leave employment assistance and then proceed to another employment assistance place before selection in the PPM survey, are excluded from the survey. For monitoring purposes these job seekers are considered to be in further assistance.

The overall response rate for the PPM survey, at around 60%, provides outcomes estimates that are generally accurate to within plus or minus 1 percentage point at the National level.

DEWRSB administrative systems record details of placements, commencements and paid outcomes for labour market assistance.

The PPM outcomes for Intensive Assistance are derived from two sources - DEWRSB administrative systems and the PPM survey. The administrative system provides information on the primary and secondary paid interim outcomes for job seekers three months after their placement into a job. The PPM survey provides the employment and training status of job seekers three months after they exited assistance without having achieved a paid interim outcome. The addition of the paid interim and PPM survey outcomes data for unpaid exits provides the labour force status for participants at the three month point in time and is comparable to measurements for other types of employment assistance.

Post Programme Monitoring Outcomes

PPM Measures of Outcomes

Table A below provides a summary of PPM Outcomes under current employment assistance (Job Network), mutual obligation arrangements (Work for the Dole) and a range of previous labour market programmes that operated in the mid-1990s (under the *Working Nation* banner). There are three measures of Outcomes rates:

- *employment* (the proportion of participants who achieved an employment outcome compared to all those who left assistance);
- *education and/or training* (the proportion of participants who achieved an education and/or training outcome compared to all those who left assistance); and
- *'positive' outcomes* (the proportion of participants who achieved an employment or education and training outcome compared to all those who left assistance).

Methodology for Measuring Outcomes Rates

In calculating PPM outcomes rates, a decision has to be made about the treatment of those participants who left the programme and went on to further assistance: whether they are included or excluded from the measure of outcomes:

- under past PPM methodology, this group was *excluded* from the measure. It is evident, however, that this resulted in higher outcomes rates when there was a high rate of churning between programmes (as reflected in the figures for "Further Assistance" in Table A);
- an improved methodology has been adopted that *includes* all participants who went on to further assistance. This provides a more comprehensive picture of what has happened to all participants in programmes.
 - this methodology is consistent with how the *cost per employment outcome* from programmes has always been measured in the Department's evaluations of labour market programmes.

Measures provided under the new methodology are set out in the final three right-hand columns of Table A. The previous estimates, based on the old method, are in the left-hand columns for comparative purposes only.

Table A: PPM Outcomes (3 months) (%): Old and New Methods

| | Old Method | | | Further Assistance | New Method | | |
|--------------------------------------|---------------------|-------------------------------|--------------------------------|--------------------|---------------------|-------------------------------|--------------------------------|
| | Employment outcomes | Education & Training Outcomes | Positive Outcomes ¹ | | Employment outcomes | Education & Training Outcomes | Positive Outcomes ² |
| Job Network³ | | | | | | | |
| Job Search Training | 40.0 | 13.2 | 48.9 | 5.3 | 37.9 | 12.5 | 46.3 |
| Intensive Assistance | 35.9 | 7.9 | 42.4 | 2.6 | 35.0 | 7.7 | 41.3 |
| NEIS | 81.8 | 8.9 | 84.1 | 0.0 | 81.8 | 8.9 | 84.1 |
| Work for the Dole³ | 32.9 | 13.3 | 42.8 | 16.6 | 27.4 | 11.1 | 35.7 |
| Working Nation⁴ | | | | | | | |
| Job Clubs | 36.4 | 10.8 | 43.8 | 31.7 | 24.9 | 7.4 | 29.9 |
| Working Nation⁵ | 35.1 | 12.4 | 44.3 | 22.0 | 27.4 | 9.7 | 34.6 |
| Job Skills | 31.9 | 8.9 | 37.8 | 11.7 | 28.1 | 7.8 | 33.4 |
| JobTrain | 33.7 | 12.3 | 42.7 | 30.0 | 23.6 | 8.6 | 29.9 |
| JobStart | 52.8 | 6.4 | 56.3 | 8.5 | 48.3 | 5.9 | 51.5 |
| LEAP | 25.8 | 10.3 | 33.7 | 13.1 | 22.4 | 8.9 | 29.3 |
| New Work Opportunities | 21.0 | 5.2 | 24.8 | 14.8 | 17.9 | 4.4 | 21.1 |
| SkillShare | 36.9 | 14.0 | 47.0 | 17.8 | 30.3 | 11.5 | 38.6 |
| Special Intervention | 21.4 | 20.7 | 39.4 | 38.7 | 13.1 | 12.7 | 24.2 |

1. The proportion of participants that achieved an employment and/or education/ training outcome *excluding* those who went onto further assistance.

2. The proportion of participants that achieved an employment and/or education/ training outcome *including* those who went onto further assistance.

3. Outcomes achieved in the 1999-2000 financial year.

4. This relates to the Working Nation programme, Job Clubs, which is similar to Job Search Training: outcomes for 1995-96 financial year.

5. Working Nation programmes replaced by Intensive Assistance: outcomes are for 1995-96 financial year. The results show the weighted average for the seven programmes and for each programme

Source: The Post Programme Monitoring Survey conducted 3 months after job seekers cease assistance and DEWRSB administrative systems.

Labour Market Assistance

Intensive Assistance: provides individually tailored assistance for up to two years to eligible job seekers who are more disadvantaged in the labour market, to prepare for, and obtain, sustainable employment. The level of funding is based on the job seekers' level of disadvantage. There are two funding levels, A and B.

Job seekers who transferred to a new provider as a result of the second contract period are treated as a new commencement but as the job seekers period of assistance has not been completed, they are included in the PPM survey.

Job Search Training: provides training for three weeks in job search techniques (such as résumé preparation, interview techniques and presentation skills) to give unemployed people the skills and confidence to seek and obtain employment.

Job Matching: delivers labour exchange services to job seekers including canvassing for jobs and matching and placing suitable unemployed people to these jobs, as well as preparing résumés for job seekers.

New Enterprise Incentive Scheme (NEIS): provides support and training for eligible job seekers who wish to pursue the option of self-employment.

Work for the Dole: provides assistance for job seekers to develop work habits, generic work skills and gain work experience by participating in community projects and activities for up to 26 weeks over a 12 month period.

Indigenous Employment Programme: replaced the Training for Aboriginals and Torres Strait Islanders Programme (TAP) and has several components. It includes Wage Assistance which is a wage subsidy paid to employers over 26 weeks providing on-going employment. In Structured Training and Employment Projects (STEP) employers in the private sector and regional and community based employment sponsor organisations provide at least 5 jobs, generally involving accredited training, usually a traineeship, to participants for a minimum period of 12 months.

Community Support Programme: helps disadvantaged job seekers access counselling, stable accommodation, alcohol or drug rehabilitation and other activities addressing significant needs.

Participation is voluntary and assistance can be for up to two years.

Return to Work Programme: helps job seekers who have been absent for two years or more due to unpaid caring responsibilities increase their skills and confidence so they can re-enter the work force.

Self-Employment Development Scheme (SEDS): allow job seekers to undertake approved activities to develop self-employment opportunities for three months. The business viability is assessed by a NEIS Managing agent and approved by Centrelink.

Definitions

Australian Job Search: Lists all vacancies notified to the Job Network and provides information on Job Network members. Is available in Centrelink and Job Network member offices and the DEWRSB Internet site.

Community Development Employment Projects (CDEP): administered by the Aboriginal and Torres Strait Islander Commission - a scheme generally providing opportunities for part time work paid at the equivalent of unemployment allowances to residents of indigenous communities in remote locations. Positive and employment outcomes exclude indigenous job seekers who return to a CDEP after leaving labour market assistance.

Community Work Coordinators: are contracted to develop Work for the Dole projects/activities and manage the placement of eligible job seekers into those projects/activities.

Educational attainment: refers to the highest educational level completed by job seekers. If a job seeker did not complete Year 12 then they will be included in the Year 10 category.

Eligible vacancy: is a job vacancy listed on the Australian Job Search database that are eligible for a payment under Job Matching.

Further Assistance: includes job seekers who proceed to another DEWRSB or DETYA funded employment assistance within three months of exiting other employment assistance. It includes commencements in Job Search Training, Intensive Assistance, New Apprenticeships, NEIS, Work for the Dole, Green Corps, Advanced English for Migrants Programme (AEMP) and IEP - STEP and IEP - Wage Assistance. Job Matching is not regarded as further assistance.

Income support recipients: includes job seekers registered with Centrelink as unemployed and in receipt of Newstart Allowance (NSA) or job seekers aged 15 to 24 not in full-time education and in receipt of Youth Allowance (YA).

Job Matching Only (JMO): Job seekers, irrespective of income support who are eligible for Job Matching Only services but not eligible for other Job Network services. JMOs can renew their registration as

unemployed every three months with either Centrelink or Job Network members.

Job Matching placements: include placements provided under Job Matching and job placements under Intensive Assistance.

Job Network Eligible (JNE): Job seekers who are receiving income support payments, and young people not in full-time study irrespective of income support. CDEP participants are eligible for Job Matching services. These people may be eligible for other Job Network services, subject to eligibility requirements.

Job Seeker Classification Instrument (JSCI): a measurement of a job seeker's relative disadvantage in obtaining employment and is used to determine the level of labour market assistance required.

Long term recipients: Job seekers who have been registered with Centrelink as unemployed for 12 months or more and receiving income support.

NESB: migrants from a Non-English-speaking background.

Outcomes qualifying for a claim for payment: Intensive Assistance or Job Search Training outcomes where the conditions for a claim for a paid outcome have been met. An actual claim may or may not have been made. This has not been included in this report.

Placed, awaiting an outcome: Placement of an Intensive Assistance or Job Search Training job seeker in employment or study but where the 13 week paid outcome mark has yet to be reached. This has not been included in this report.

Paid Interim Outcomes: Intensive Assistance outcomes where a claim for payment has been approved after placement of a job seeker in employment or study for 13 weeks. This has not been included in this report.

Paid Final Outcomes: Intensive Assistance outcomes where a claim for payment has been approved after placement of a job seeker in employment or study for 26 weeks. This has not been included in this report.

Post Assistance Off-Income Support Outcomes: refers to the proportion of Newstart or Youth Allowance (Other) recipients who were off Newstart or Youth Allowance (Other) or any other type allowance recorded on the Integrated Employment System three months after leaving assistance. Job seekers who move from Newstart or Youth Allowance (Other) to income support payments not recorded on the Integrated Employment System, such as the Community Employment Development Projects (CDEP), age pension or any other pension where the job seekers is not registered with Centrelink as looking for work, are counted as off-benefit outcomes.

Short Term Recipients: are job seekers who have been registered with Centrelink as unemployed for less than 12 months and in receipt of income support.

Unpaid exits: Exits from Intensive Assistance that do not involve a paid outcome.

Very Long Term Recipients: are job seekers who have been registered with Centrelink as unemployed and in receipt of income support for 24 months or more unless otherwise stated.

Work for the Dole commencement: Job seekers are required to participate in WfD for up to six months over a 12-month period. This means that job seekers

can participate in a number of different WfD projects and with different CWCs before completing their placement. Each time a job seeker starts with a CWC, a new commencement is recorded.

Work for the Dole exit: For the purposes of PPM, job seekers are surveyed whenever they have a break between CWC placements of more than 3 months and in relation to their last CWC placement in the 12 month period.

Regional Coverage

Regions used in this report are based on the 19 tender regions for the second Job Network contract period.

DEWRSB labour market regions

