

Exploration for CCS sites underway in New South Wales

A search is underway to find sites in New South Wales which could safely store carbon dioxide, Energy Minister Ian Macdonald has announced.

Drilling has commenced near Munmorah Power Station on the NSW Central Coast, which is located near a pilot carbon capture plant.

"This is the first time exploration for potential CO₂ storage sites has been undertaken in this state," Macdonald says.

"This is an exciting initiative, the first of four wells will be drilled as part of the first stage of the program. The well will take about 80 days to complete," he says.

Geologists from the NSW Department of Primary Industries will drill down two kilometres to take core samples for further testing.

Macdonald says the regional drilling program will help predict if underlying rocks in the Sydney and Gunnedah Basins are capable of safely storing large volumes of CO₂ captured from power stations.

"The success of this project will be critical in reducing greenhouse gas emissions, while continuing to maintain strong and sustainable mining and energy sectors," says Macdonald.

"Because coal continues to account for more than 90 per cent of our electricity needs, this project is a significant step forward towards a lower emissions society," he explains.

The NSW Government says that until now there has been a misconception that there is no potential for geological storage of CO₂ in the state, mainly because of a lack of information on the deeper rock formations in NSW.

Studies carried out by the NSW Department of Primary Industries show that NSW has the potential for the storage of CO₂, Macdonald says.

The drilling program is part of a long-term project involving the nearby Munmorah Pilot Carbon Capture plant, which was commissioned in July 2008.

Developed by Delta Electricity and the CSIRO, the \$5 million research facility is designed to capture about 3,000 tonnes of carbon dioxide a year from the nearby power station.

"If successful, this pilot project will provide the foundation for a large scale \$150 million post combustion capture and storage demonstration project in NSW planned for operation by 2013, capturing up to 100,000 tonnes of carbon dioxide each year," says Macdonald.

The drilling program is expected to be completed at the Munmorah site by late April 2009.

This week's volume-weighted electricity price (\$/MWh)

| | |
|------|---------|
| NSW: | \$38.17 |
| Vic: | \$31.85 |
| Qld: | \$34.09 |
| SA: | \$33.21 |
| Tas: | \$44.68 |

Calendar of Events

11 February 2009

The Australian Energy Market Commission will hold a public forum to discuss the Framework and Issues Paper for a Review into the use of Total Factor Productivity for the determination of prices and revenues on Wednesday 11 February 2009. The forum will be held at the Melbourne Airport Hilton from 1 pm to 5 pm.

Parties interested in attending are asked to register via email registration@aemc.gov.au by 1 February 2009.

5 and 6 May 2009

The tenth annual TechCon Asia-Pacific will be held on Tuesday 5 and Wednesday 6 May 2009 at the Sydney Convention and Exhibition Centre. TechCon Asia Pacific is a forum for the discussion of technology development and solutions which provide improvement in key high voltage asset management strategies. A technical exhibition will display the products and services of leading providers in the Asia-Pacific region.

For further information, please contact the event co-ordinator by telephoning 03 8544 2301, by emailing fareesha.wijesinghe@wtc.com.au or visiting the event website at www.tjh2b.com.

Jobs on Offer

List industry jobs

esaa Full Members are invited to submit industry-related employment opportunities. This is a complimentary service. Email notices to newseditor@esaa.com.au by close of business Thursday. Enquiries to Gabrielle Callahan on 03 9670 0188.

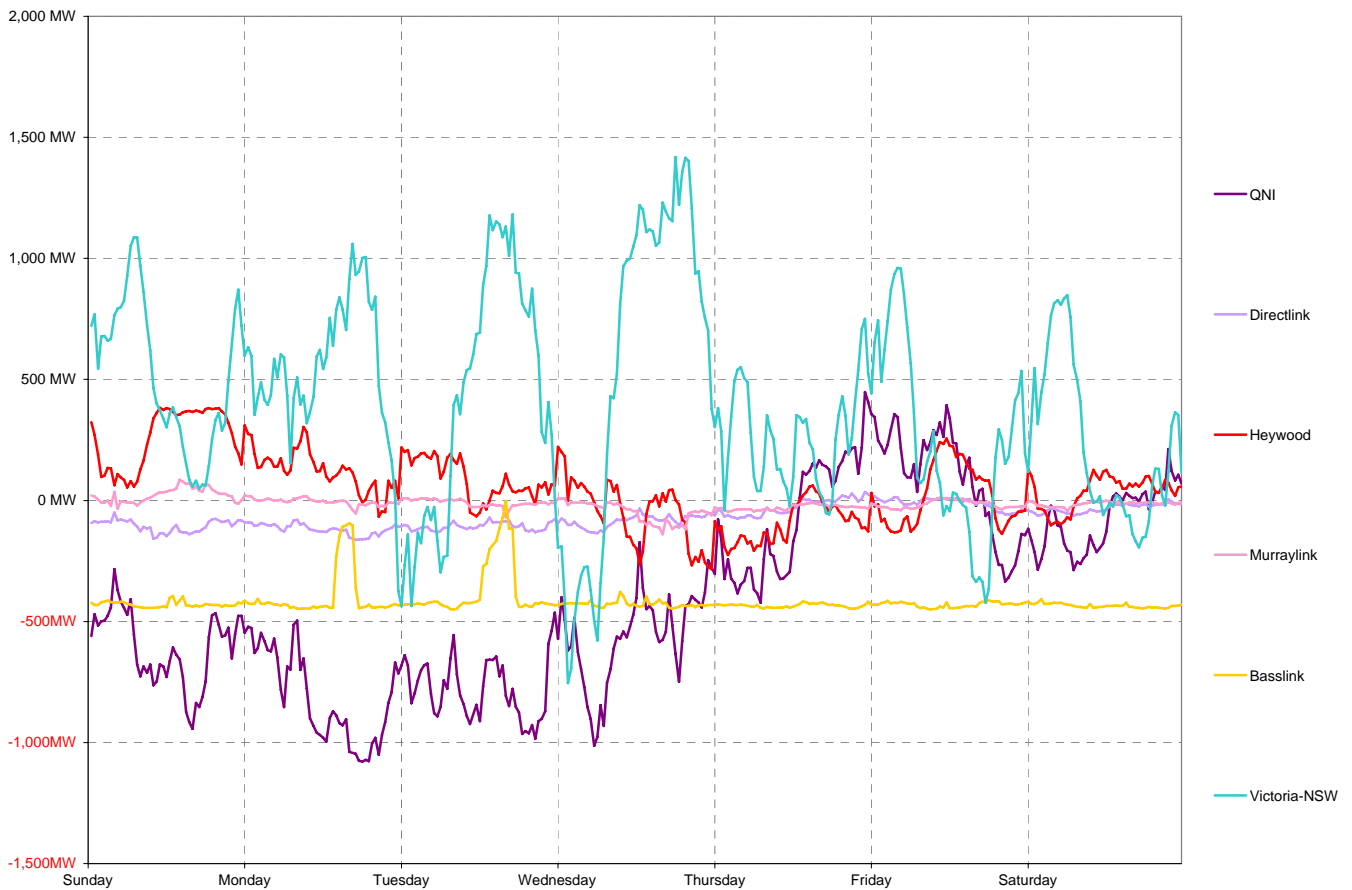
National Electricity Market Report

Week 2 Ending Saturday 10-Jan-09

Daily Inter-Regional Energy Flow

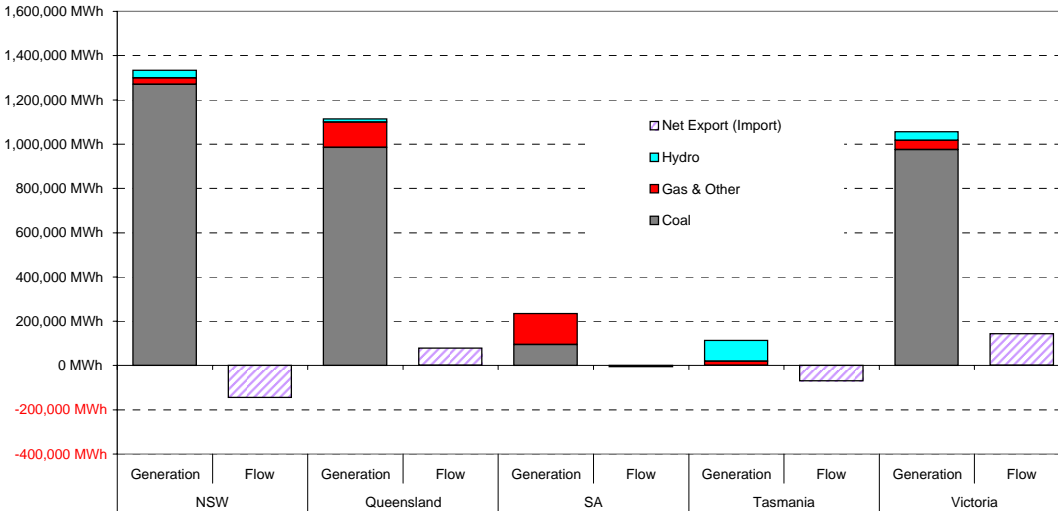
| | Daily Net Exports (or Imports) | | | | | | | Weekly Total |
|--|--------------------------------|---------|---------|-----------|----------|---------|----------|--------------|
| | Sunday | Monday | Tuesday | Wednesday | Thursday | Friday | Saturday | |
| For the Current Week | | | | | | | | |
| NSW | -29,621 | -35,189 | -31,522 | -28,947 | -8,402 | -3,960 | -7,903 | -145,542 |
| Queensland | 17,075 | 22,472 | 21,231 | 15,328 | 2,043 | -1,666 | 2,516 | 78,998 |
| South Australia | -6,840 | -2,836 | -1,873 | 2,500 | 2,892 | -198 | -582 | -6,935 |
| Tasmania | -10,292 | -9,501 | -8,894 | -10,270 | -10,419 | -10,323 | -10,432 | -70,129 |
| Victoria | 29,678 | 25,053 | 21,058 | 21,389 | 13,885 | 16,146 | 16,401 | 143,609 |
| MWh Change from Same Week Last Year | | | | | | | | |
| NSW | -22,296 | -23,759 | -24,672 | -18,702 | 10,657 | 23,197 | 6,407 | -49,168 |
| Queensland | 10,076 | 19,027 | 16,402 | 2,322 | -21,778 | -27,371 | -16,090 | -17,413 |
| South Australia | -7,927 | -1,767 | -1,062 | 3,891 | 6,519 | -2,614 | 664 | -2,295 |
| Tasmania | -10,292 | -9,501 | -8,371 | -3,950 | -9,186 | -5,050 | -2,373 | -48,721 |
| Victoria | 25,096 | 22,344 | 18,409 | 19,744 | 27,522 | 22,847 | 4,273 | 140,234 |
| For the Same Week Last Year | | | | | | | | |
| NSW | -7,326 | -11,430 | -6,850 | -10,245 | -19,058 | -27,157 | -14,310 | -96,374 |
| Queensland | 6,999 | 3,445 | 4,829 | 13,006 | 23,821 | 25,706 | 18,605 | 96,410 |
| South Australia | 1,087 | -1,069 | -811 | -1,391 | -3,627 | 2,417 | -1,246 | -4,640 |
| Tasmania | 0 | 0 | -523 | -6,321 | -1,233 | -5,274 | -8,059 | -21,408 |
| Victoria | 4,582 | 2,710 | 2,649 | 1,645 | -13,637 | -6,702 | 12,128 | 3,375 |

Interconnector energy flow throughout the week

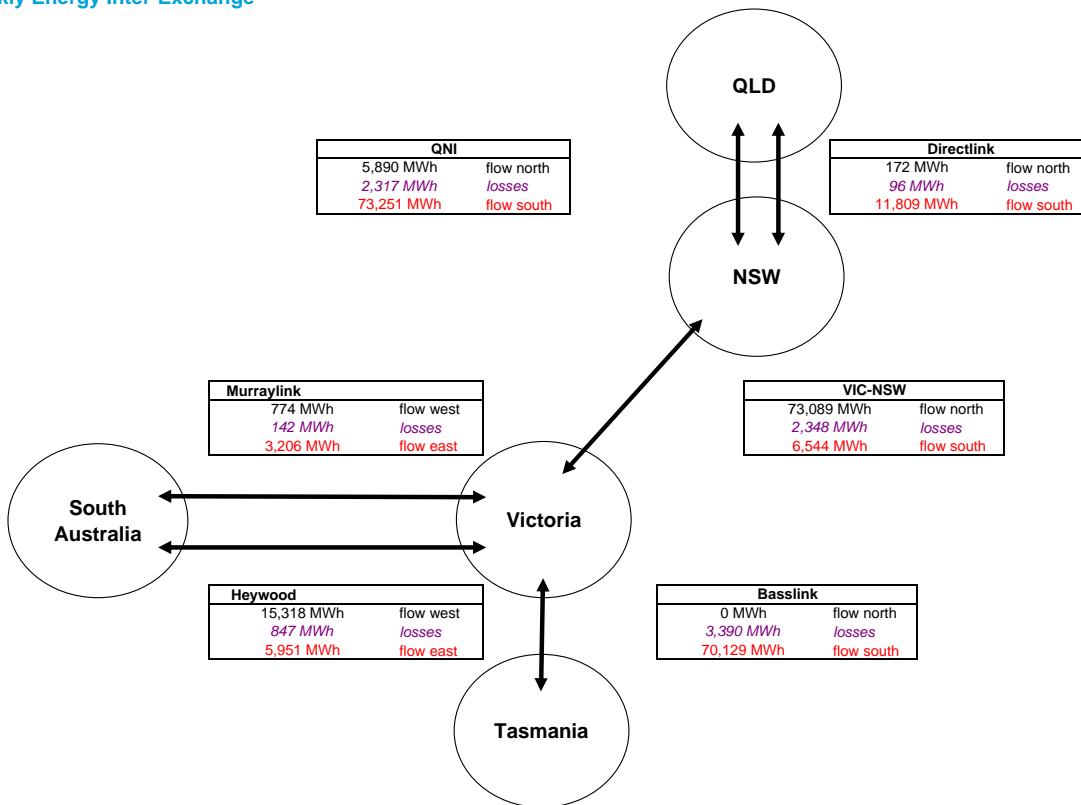


Generation by Fuel Type

| | All data in this table is shown in MWh for the week | | | | | | | | | | | |
|----------------------------|---|-----------------|------------------|---------------|----------------|---------------|----------------|----------------|------------------|----------------|------------------|------|
| | NSW | | Queensland | | SA | | Tasmania | | Victoria | | Whole of NEM | |
| | Generation | Flow | Generation | Flow | Generation | Flow | Generation | Flow | Generation | Flow | Generation | Flow |
| Coal | 1,270,261 | | 985,022 | | 94,796 | | 0 | | 975,702 | | 3,325,781 | |
| Gas & Other | 28,990 | | 114,667 | | 139,741 | | 19,823 | | 41,079 | | 344,298 | |
| Hydro | 34,833 | | 14,775 | | 0 | | 93,775 | | 38,906 | | 182,288 | |
| Pump Storage | -1,759 | | -83 | | 0 | | 0 | | 0 | | -1,842 | |
| Total Generation | 1,332,325 | | 1,114,380 | | 234,537 | | 113,598 | | 1,055,686 | | 3,850,525 | |
| Total Exports | | 12,606 | | 85,060 | | 9,156 | | 0 | | 159,309 | | |
| Total Imports | | 158,148 | | 6,062 | | 16,091 | | 70,129 | | 15,700 | | |
| Net Export (Import) | | -145,542 | | 78,998 | | -6,935 | | -70,129 | | 143,609 | | |
| Net Consumption | 1,477,867 | | 1,035,383 | | 241,472 | | 183,727 | | 912,078 | | | |

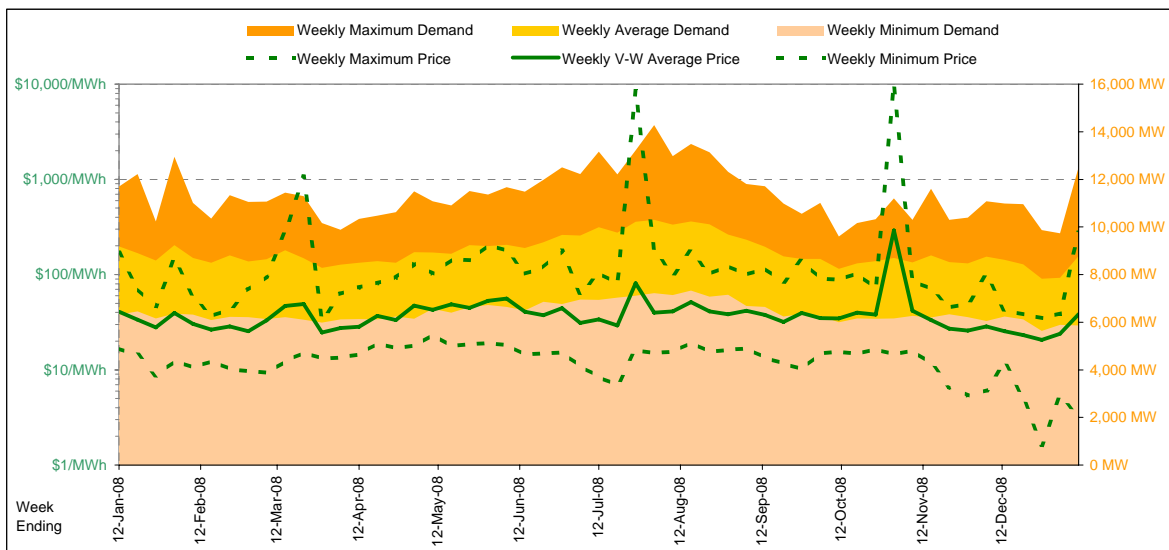


Weekly Energy Inter-Exchange



Current Year

| | | Week 2 Ending Saturday | | 52-weeks ending Sat | | |
|--------------------------|---------------------|------------------------|----------|---------------------|------------|---------------|
| | | 10-Jan-09 | % change | 12-Jan-08 | 10-Jan-09 | Date Occurred |
| Energy (MWh) | Total | 1,475,044 | -4% | 1,543,317 | 78,247,598 | |
| | Maximum | 12,498 | 7% | 11,703 | 14,274 | 28-Aug-08 |
| | Average | 8,780 | -4% | 9,186 | 8,957 | |
| Trading Demand (MW) | Maximum | 5,860 | -7% | 6,318 | 5,632 | 26-Dec-08 |
| | Minimum | 70% | | 78% | 63% | |
| Regional Load Factor (%) | | | | | | |
| Trading Price (\$/MWh) | Maximum | 276.40 | 64% | 169.00 | 10000.00 | |
| | Volume-Weighted Ave | 38.17 | -6% | 40.71 | 41.98 | |
| | Time-Weighted Ave | 33.97 | -11% | 38.29 | 38.93 | |
| | Minimum | 3.23 | -81% | 16.78 | 1.61 | |
| Temperature °C (Sydney) | Maximum | 33.1 | 15% | 28.9 | 35.0 | |
| | Minimum | 17.2 | -16% | 20.5 | 5.3 | |

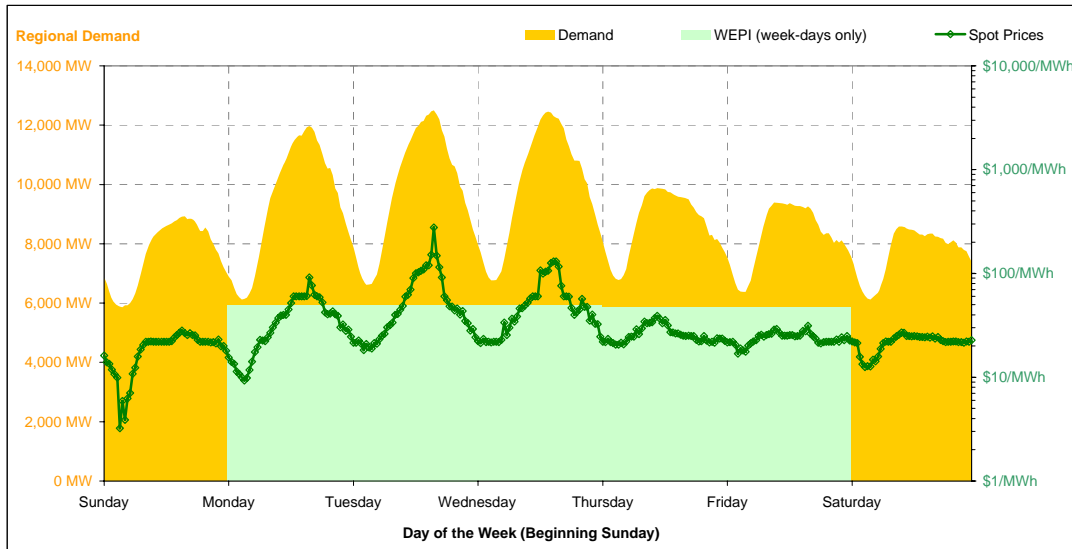


Note that prices below \$1/MWh have been reset to \$1/MWh for the purposes of this display

Current Week

| All Data in this table is shown in MWh | | | | | | | | |
|---|------------------|----------------|----------------|----------------|----------------|----------------|----------------|----------------|
| | Weekly Total | Sunday | Monday | Tuesday | Wednesday | Thursday | Friday | Saturday |
| Total Production by Generation Company | | | | | | | | |
| Babcock & Brown Power | 24,355 | 3,479 | 3,480 | 3,480 | 3,480 | 3,476 | 3,480 | 3,480 |
| Delta Electricity | 510,432 | 65,045 | 72,076 | 76,173 | 78,339 | 77,998 | 73,273 | 67,530 |
| Eraring Energy | 263,498 | 28,060 | 36,347 | 41,739 | 41,964 | 38,057 | 41,885 | 35,447 |
| Macquarie Generation | 474,444 | 55,818 | 70,085 | 69,279 | 70,402 | 71,335 | 69,842 | 67,684 |
| Marubeni | 20,003 | 1,920 | 3,233 | 3,221 | 3,215 | 3,244 | 3,250 | 1,920 |
| Snowy Hydro (NSW) | 32,379 | 360 | 5,620 | 9,903 | 9,070 | 4,789 | 1,965 | 672 |
| TRUenergy | 4,427 | 0 | 0 | 0 | 1,055 | 1,920 | 1,453 | 0 |
| Origin Energy | 4,548 | 0 | 0 | 1,237 | 3,311 | 0 | 0 | 0 |
| Other NSW Plants | 0 | 0 | 0 | 0 | 0 | 0 | 0 | 0 |
| Total internal production | 1,334,084 | 154,681 | 190,840 | 205,031 | 210,835 | 200,818 | 195,147 | 176,733 |
| (Load at Pumped Storage) | -1,759 | -14 | 0 | -190 | -873 | -683 | 0 | 0 |
| Net internal production | 1,332,325 | 154,668 | 190,840 | 204,841 | 209,963 | 200,135 | 195,147 | 176,733 |
| Percentage each company's production represents of the total internal production | | | | | | | | |
| Babcock & Brown Power | 1.8% | 2.2% | 1.8% | 1.7% | 1.7% | 1.7% | 1.8% | 2.0% |
| Delta Electricity | 38.3% | 42.1% | 37.8% | 37.2% | 37.2% | 37.5% | 38.8% | 38.2% |
| Eraring Energy | 19.8% | 18.1% | 19.0% | 20.4% | 19.9% | 19.0% | 21.5% | 20.1% |
| Macquarie Generation | 35.6% | 36.1% | 36.7% | 33.8% | 33.4% | 35.5% | 35.8% | 38.3% |
| Marubeni | 1.5% | 1.2% | 1.7% | 1.6% | 1.5% | 1.6% | 1.7% | 1.1% |
| Snowy Hydro (NSW) | 2.4% | 0.2% | 2.9% | 4.8% | 4.3% | 2.4% | 1.0% | 0.4% |
| TRUenergy | 0.3% | 0.0% | 0.0% | 0.0% | 0.5% | 1.0% | 0.7% | 0.0% |
| Origin Energy | 0.3% | 0.0% | 0.0% | 0.6% | 1.6% | 0.0% | 0.0% | 0.0% |
| Other NSW Plants | 0.0% | 0.0% | 0.0% | 0.0% | 0.0% | 0.0% | 0.0% | 0.0% |
| Total Percentage | 100.0% | 100.0% | 100.0% | 100.0% | 100.0% | 100.0% | 100.0% | 100.0% |

Current Week (continued)



| | Sunday | Monday | Tuesday | Wednesday | Thursday | Friday | Saturday |
|---|---------------------|---------|---------|-----------|----------|---------|----------|
| For the Current Week | | | | | | | |
| Total Energy (MWh) | 183,914 | 225,355 | 235,688 | 238,040 | 208,504 | 198,919 | 184,625 |
| Trading Demand Target (MW) | Maximum | 8,923 | 11,974 | 12,498 | 12,454 | 9,875 | 8,583 |
| | Average | 7,663 | 9,390 | 9,820 | 9,918 | 8,688 | 8,288 |
| | Minimum | 5,860 | 6,124 | 6,615 | 6,764 | 6,784 | 6,376 |
| Regional Load Factor (%) | 86% | 78% | 79% | 80% | 88% | 88% | 90% |
| Wholesale Electricity Price Index (WEPI) | N/A | 48.65 | 49.60 | 49.42 | 47.33 | 47.08 | N/A |
| | Maximum | 28.06 | 91.77 | 276.40 | 130.65 | 39.10 | 31.26 |
| | Volume-Weighted Ave | 19.87 | 40.20 | 65.85 | 57.52 | 26.55 | 23.97 |
| Trading Price (\$/MWh) | Time-Weighted Ave | 19.02 | 36.37 | 58.49 | 52.46 | 26.11 | 23.67 |
| | Minimum | 3.23 | 9.29 | 18.28 | 21.40 | 20.53 | 16.92 |
| | Maximum | 24.6 | 27.9 | 28.3 | 33.1 | 22.4 | 22.6 |
| Temperature °C (Sydney) | 18.7 | 19.5 | 20.2 | 20.7 | 20.4 | 17.2 | 18.3 |
| Percentage Change from Same Week Last Year | | | | | | | |
| Total Energy (MWh) | -10% | 1% | 8% | 6% | -10% | -14% | -13% |
| Trading Demand Target (MW) | Maximum | -14% | 8% | 18% | 12% | -15% | -20% |
| | Average | -10% | 1% | 8% | 6% | -10% | -13% |
| | Minimum | -7% | -7% | -2% | 1% | -1% | -9% |
| Wholesale Electricity Price Index (WEPI) | N/A | -22% | -19% | -19% | -23% | -22% | N/A |
| | Maximum | -62% | 35% | 503% | 87% | -77% | -28% |
| | Volume-Weighted Ave | -50% | -6% | 97% | 47% | -53% | -46% |
| Trading Price (\$/MWh) | Time-Weighted Ave | -49% | -10% | 81% | 41% | -50% | -18% |
| | Minimum | -84% | -50% | 0% | 15% | 7% | -15% |
| | Maximum | -15% | 4% | 16% | 20% | -15% | -12% |
| Temperature °C (Sydney) | -9% | -11% | -6% | -5% | -10% | -17% | -14% |
| For the Same Week Last Year | | | | | | | |
| Total Energy (MWh) | 204,824 | 222,451 | 218,325 | 223,594 | 230,616 | 230,936 | 212,571 |
| Trading Demand Target (MW) | Maximum | 10,317 | 11,120 | 10,555 | 11,108 | 11,585 | 11,703 |
| | Average | 8,534 | 9,269 | 9,097 | 9,316 | 9,609 | 9,622 |
| | Minimum | 6,318 | 6,596 | 6,742 | 6,686 | 6,842 | 6,860 |
| Regional Load Factor (%) | 83% | 83% | 86% | 84% | 83% | 82% | 84% |
| Wholesale Electricity Price Index (WEPI) | N/A | 62.28 | 61.60 | 61.17 | 61.61 | 60.19 | N/A |
| | Maximum | 73.08 | 68.12 | 45.87 | 69.72 | 169.00 | 74.63 |
| | Volume-Weighted Ave | 39.48 | 42.94 | 33.46 | 39.06 | 56.49 | 44.62 |
| Trading Price (\$/MWh) | Time-Weighted Ave | 37.19 | 40.37 | 32.23 | 37.15 | 52.56 | 42.03 |
| | Minimum | 19.95 | 18.74 | 18.26 | 18.63 | 19.23 | 20.00 |
| | Maximum | 28.9 | 26.9 | 24.4 | 27.6 | 26.4 | 27.1 |
| Temperature °C (Sydney) | 20.5 | 21.9 | 21.4 | 21.7 | 22.6 | 20.6 | 21.2 |

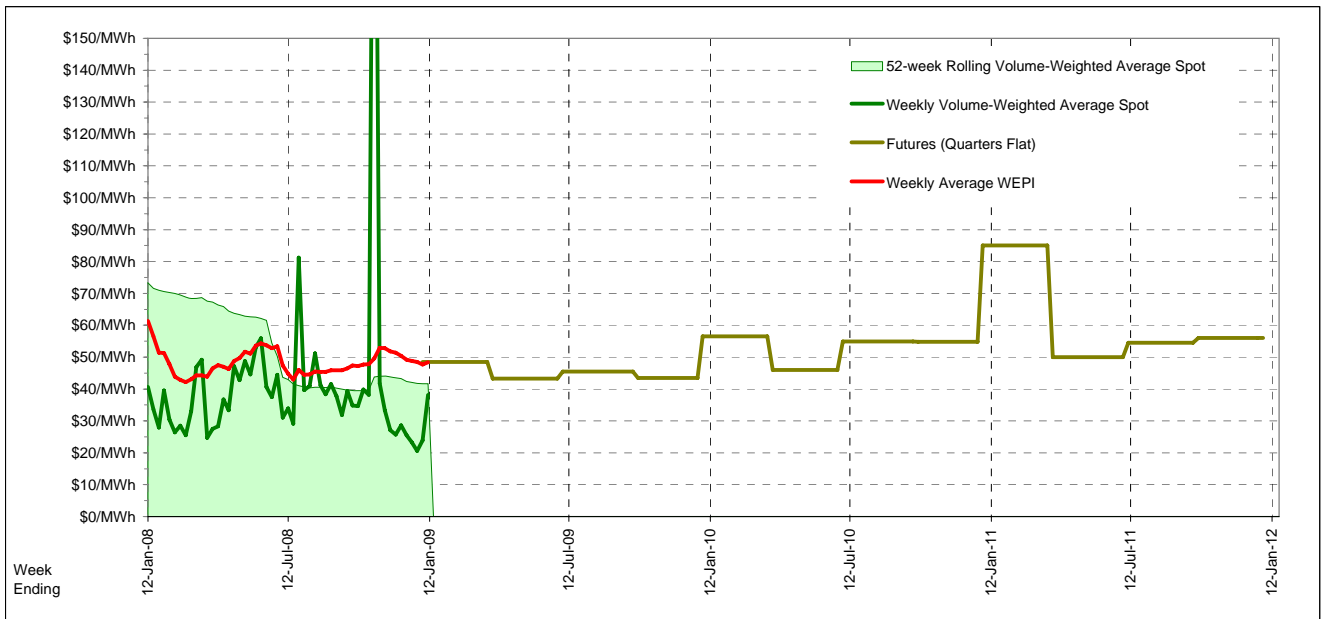
Long-Term Trends

This table contains electricity futures pricing, supplied by d-cyphatrade. All data other than flat and peak quarterly pricing is implied.

| Futures settlement prices for flat load (all times) | | CalYear | FinYear Ending | Q1 | Q2 | Q3 | Q4 |
|---|--|---------|----------------|-------|-------|-------|-------|
| | | 2009 | | 48.50 | 43.30 | 45.50 | 43.50 |
| | | 2010 | 53.06 | 47.82 | 56.50 | 45.95 | 54.85 |
| | | 2011 | 61.28 | 61.10 | 85.00 | 50.00 | 56.00 |
| | | 2012 | | | | | |

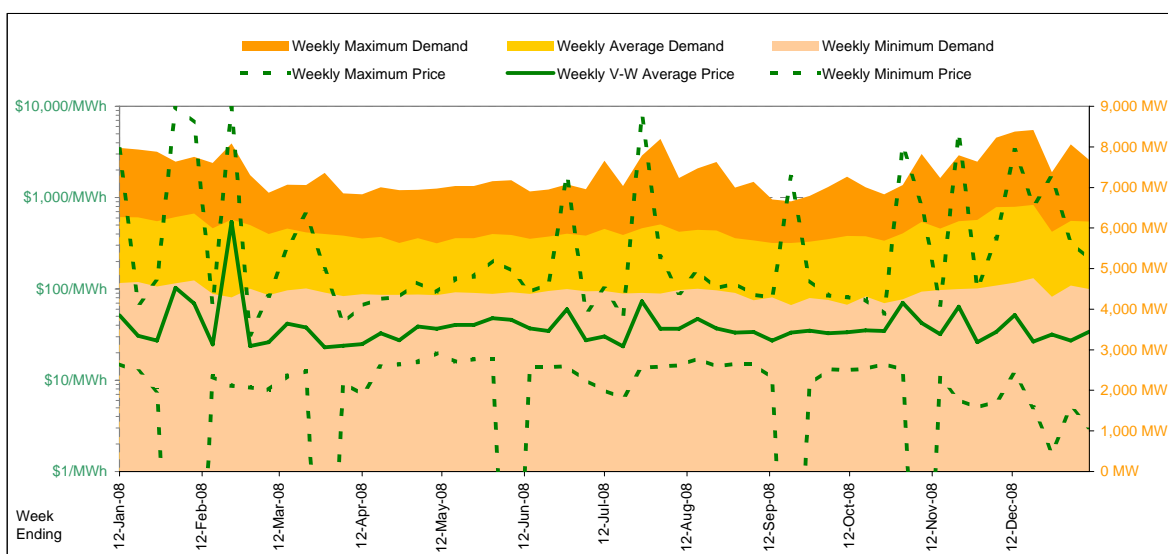
| Futures settlement prices for peak load (7am-10pm M-F) | | CalYear | FinYear Ending | Q1 | Q2 | Q3 | Q4 |
|--|--|---------|----------------|-------|-------|-------|-------|
| | | 2009 | | 75.00 | 62.00 | 65.00 | 64.00 |
| | | 2010 | 78.30 | 71.14 | 90.00 | 66.00 | 79.00 |
| | | 2011 | 55.51 | 71.53 | 78.25 | 50.00 | 51.00 |
| | | 2012 | | | | | |

| Implied Prices for Off-Peak Load (All other times) | | CalYear | FinYear Ending | Q1 | Q2 | Q3 | Q4 |
|--|--|---------|----------------|-------|-------|-------|-------|
| | | 2009 | | 27.13 | 28.22 | 29.77 | 26.97 |
| | | 2010 | 32.71 | 29.01 | 29.48 | 29.78 | 35.37 |
| | | 2011 | 65.93 | 52.69 | 90.44 | 50.00 | 57.32 |
| | | 2012 | | | | | 66.48 |



Current Year

| Energy (MWh) | Total | Week 2 Ending Saturday | | 52-Weeks Ending Sat | | Date Occurred |
|---------------------------|---------------------|------------------------|----------|---------------------|-----------|---------------|
| | | 10-Jan-09 | % change | 12-Jan-08 | 10-Jan-09 | |
| Trading Demand (MW) | Maximum | 7,674 | -4% | 7,977 | 8,413 | 19-Dec-08 |
| | Average | 6,157 | -2% | 6,268 | 5,941 | |
| | Minimum | 4,500 | -3% | 4,642 | 4,100 | 20-Sep-08 |
| Regional Load Factor (%) | | 80% | | 79% | 71% | |
| Trading Price (\$/MWh) | Maximum | 213.10 | -94% | 3396.26 | 9920.99 | |
| | Volume-Weighted Ave | 34.09 | -33% | 51.23 | 48.45 | |
| | Time-Weighted Ave | 31.72 | -32% | 46.35 | 43.56 | |
| | Minimum | 3.04 | -80% | 15.01 | -500.34 | |
| Temperature °C (Brisbane) | Maximum | 30.5 | -2% | 31.2 | 40.2 | |
| | Minimum | 19.0 | -2% | 19.3 | 3.7 | |

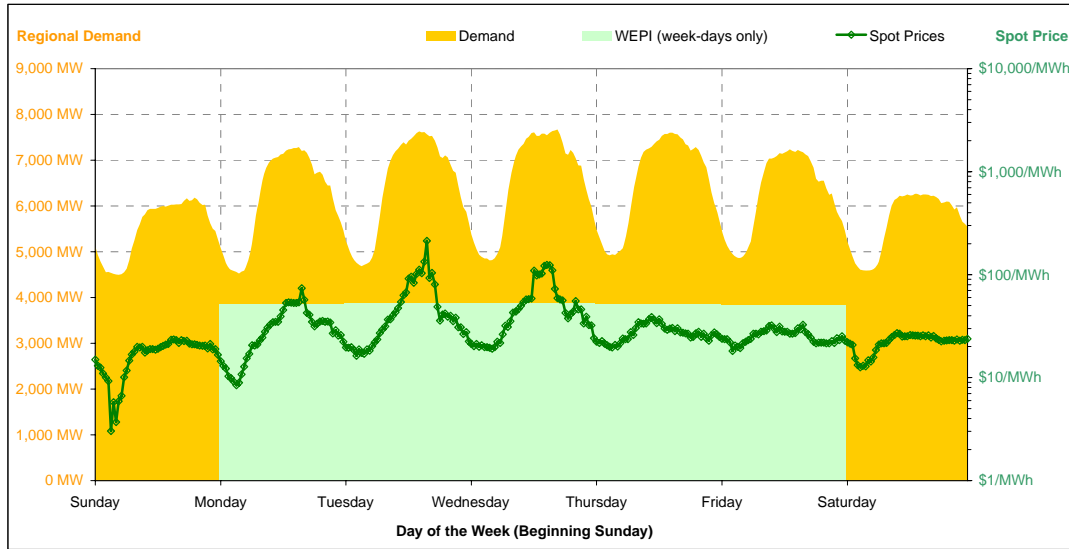


Note that prices below \$1/MWh have been reset to \$1/MWh for the purposes of this display

Current Week

| All Data in this table is shown in MWh | | | | | | | | |
|---|------------------|----------------|----------------|----------------|----------------|----------------|----------------|----------------|
| | Weekly Total | Sunday | Monday | Tuesday | Wednesday | Thursday | Friday | Saturday |
| Total Production by Generation Company | | | | | | | | |
| AGL | 29,052 | 3,410 | 4,436 | 4,825 | 4,905 | 4,234 | 4,306 | 2,938 |
| Babcock & Brown Power | 33,926 | 3,839 | 5,046 | 5,799 | 5,186 | 5,064 | 5,456 | 3,538 |
| Callide Power Trading | 124,049 | 15,029 | 16,834 | 18,067 | 18,768 | 18,608 | 18,316 | 18,429 |
| CS Energy | 258,811 | 40,235 | 43,217 | 43,855 | 42,751 | 35,392 | 28,884 | 24,479 |
| Millmerran Energy Trader | 106,502 | 20,306 | 20,403 | 18,992 | 15,542 | 10,397 | 10,424 | 10,439 |
| Origin Energy | 5,437 | 749 | 749 | 794 | 926 | 722 | 749 | 749 |
| Stanwell | 328,886 | 35,688 | 48,265 | 51,461 | 52,127 | 49,752 | 46,648 | 44,947 |
| Tarong Energy | 166,714 | 21,654 | 23,267 | 24,723 | 24,625 | 25,048 | 24,260 | 23,138 |
| Tarong North Trader | 61,088 | 8,718 | 8,780 | 7,344 | 7,319 | 9,677 | 9,678 | 9,573 |
| Other QLD Plants | 0 | 0 | 0 | 0 | 0 | 0 | 0 | 0 |
| Total internal production | 1,114,463 | 149,626 | 170,996 | 175,858 | 172,147 | 158,892 | 148,719 | 138,227 |
| (Load at Pumped Storage) | -83 | -83 | 0 | 0 | 0 | 0 | 0 | 0 |
| Net internal production | 1,114,380 | 149,543 | 170,996 | 175,858 | 172,147 | 158,892 | 148,719 | 138,227 |
| Percentage each company's production represents of the total internal production | | | | | | | | |
| AGL | 2.6% | 2.3% | 2.6% | 2.7% | 2.8% | 2.7% | 2.9% | 2.1% |
| Babcock & Brown Power | 3.0% | 2.6% | 3.0% | 3.3% | 3.0% | 3.2% | 3.7% | 2.6% |
| Callide Power Trading | 11.1% | 10.0% | 9.8% | 10.3% | 10.9% | 11.7% | 12.3% | 13.3% |
| CS Energy | 23.2% | 26.9% | 25.3% | 24.9% | 24.8% | 22.3% | 19.4% | 17.7% |
| Millmerran Energy Trader | 9.6% | 13.6% | 11.9% | 10.8% | 9.0% | 6.5% | 7.0% | 7.6% |
| Origin Energy | 0.5% | 0.5% | 0.4% | 0.5% | 0.5% | 0.5% | 0.5% | 0.5% |
| Stanwell | 29.5% | 23.9% | 28.2% | 29.3% | 30.3% | 31.3% | 31.4% | 32.5% |
| Tarong Energy | 15.0% | 14.5% | 13.6% | 14.1% | 14.3% | 15.8% | 16.3% | 16.7% |
| Tarong North Trader | 5.5% | 5.8% | 5.1% | 4.2% | 4.3% | 6.1% | 6.5% | 6.9% |
| Other QLD Plants | 0.0% | 0.0% | 0.0% | 0.0% | 0.0% | 0.0% | 0.0% | 0.0% |
| Total Percentage | 100.0% | 100.0% | 100.0% | 100.0% | 100.0% | 100.0% | 100.0% | 100.0% |

Current Week (continued)



| | Sunday | Monday | Tuesday | Wednesday | Thursday | Friday | Saturday |
|---|---------------------|---------|---------|-----------|----------|---------|----------|
| For the Current Week | | | | | | | |
| Total Energy (MWh) | 132,293 | 148,168 | 154,350 | 156,721 | 156,804 | 150,298 | 135,712 |
| Trading Demand Target (MW) | Maximum | 6,183 | 7,286 | 7,627 | 7,674 | 7,602 | 6,267 |
| | Average | 5,512 | 6,174 | 6,431 | 6,530 | 6,534 | 6,262 |
| | Minimum | 4,500 | 4,525 | 4,686 | 4,809 | 4,924 | 4,587 |
| Regional Load Factor (%) | 89% | 85% | 84% | 85% | 86% | 86% | 90% |
| Wholesale Electricity Price Index (WEPI) | N/A | 51.58 | 52.63 | 52.50 | 52.11 | 50.89 | N/A |
| | Maximum | 23.53 | 73.95 | 213.10 | 124.37 | 38.83 | 32.72 |
| | Volume-Weighted Ave | 17.67 | 32.81 | 54.41 | 53.59 | 27.85 | 25.50 |
| Trading Price (\$/MWh) | Time-Weighted Ave | 17.11 | 30.63 | 49.91 | 49.78 | 27.30 | 25.15 |
| | Minimum | 3.04 | 8.45 | 16.26 | 19.05 | 19.61 | 18.15 |
| | Maximum | 27.5 | 29.0 | 30.5 | 29.8 | 29.0 | 30.2 |
| Temperature °C (Brisbane) | Maximum | 20.1 | 20.4 | 20.8 | 20.9 | 22.5 | 19.0 |
| | Minimum | | | | | | |
| Percentage Change from Same Week Last Year | | | | | | | |
| Total Energy (MWh) | -9% | -8% | -2% | 3% | 5% | 2% | -4% |
| Trading Demand Target (MW) | Maximum | -12% | -9% | -1% | 6% | 9% | 3% |
| | Average | -9% | -8% | -2% | 3% | 5% | 2% |
| | Minimum | -5% | -7% | -5% | -1% | 2% | 4% |
| Wholesale Electricity Price Index (WEPI) | N/A | -26% | -20% | -18% | -18% | -17% | N/A |
| | Maximum | -69% | -98% | 111% | 85% | -74% | -45% |
| | Volume-Weighted Ave | -54% | -75% | 47% | 45% | -41% | -30% |
| Trading Price (\$/MWh) | Time-Weighted Ave | -53% | -73% | 42% | 41% | -39% | -27% |
| | Minimum | -84% | -54% | -9% | 9% | 15% | 7% |
| | Maximum | -12% | -6% | -2% | 8% | 10% | 11% |
| Temperature °C (Brisbane) | Maximum | -11% | -7% | -11% | -8% | -4% | 12% |
| | Minimum | | | | | | |
| For the Same Week Last Year | | | | | | | |
| Total Energy (MWh) | 144,706 | 160,425 | 157,897 | 152,461 | 149,150 | 147,225 | 141,172 |
| Trading Demand Target (MW) | Maximum | 7,012 | 7,977 | 7,734 | 7,217 | 6,992 | 7,017 |
| | Average | 6,029 | 6,684 | 6,579 | 6,353 | 6,215 | 6,134 |
| | Minimum | 4,730 | 4,854 | 4,952 | 4,851 | 4,829 | 4,684 |
| Regional Load Factor (%) | 86% | 84% | 85% | 88% | 89% | 87% | 89% |
| Wholesale Electricity Price Index (WEPI) | N/A | 69.64 | 66.11 | 64.22 | 63.92 | 61.42 | N/A |
| | Maximum | 75.31 | 3396.26 | 100.89 | 67.08 | 148.72 | 59.84 |
| | Volume-Weighted Ave | 38.44 | 131.72 | 37.08 | 36.87 | 46.86 | 36.26 |
| Trading Price (\$/MWh) | Time-Weighted Ave | 36.46 | 114.64 | 35.19 | 35.27 | 44.47 | 34.53 |
| | Minimum | 18.90 | 18.26 | 17.88 | 17.50 | 17.03 | 17.00 |
| | Maximum | 31.2 | 30.9 | 31.0 | 27.6 | 26.4 | 27.1 |
| Temperature °C (Brisbane) | Maximum | 22.7 | 21.9 | 23.3 | 22.6 | 23.5 | 20.7 |
| | Minimum | | | | | | |

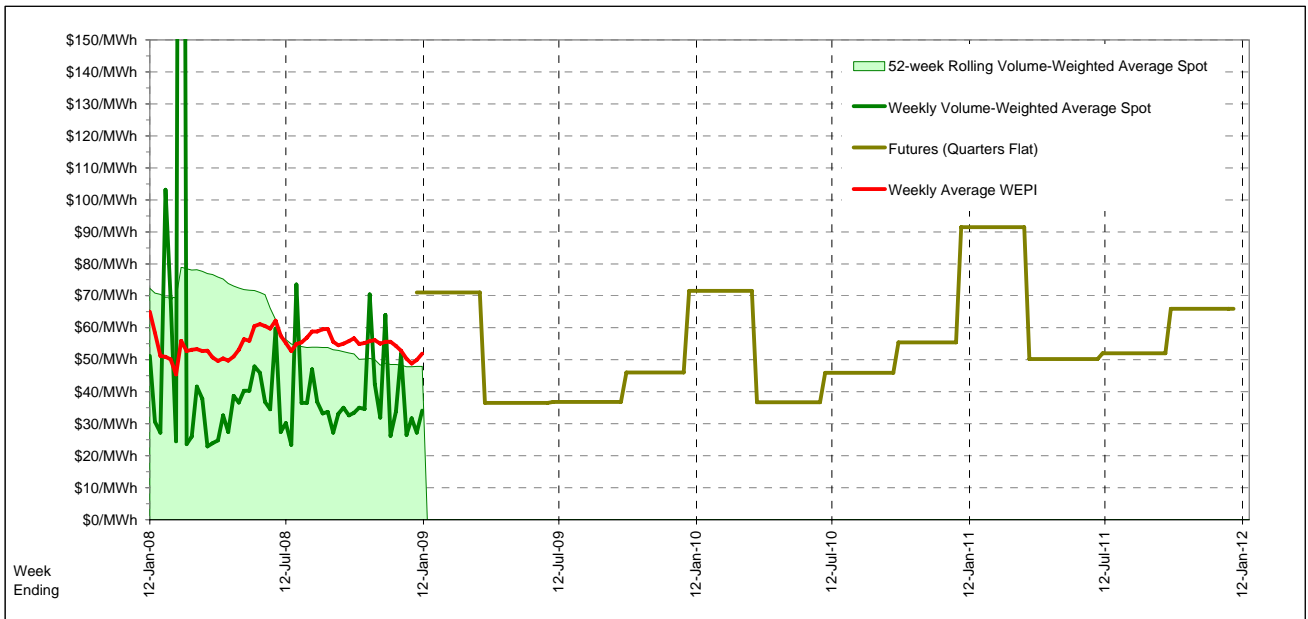
Long-Term Trends

This table contains electricity futures pricing, supplied by d-cyphatrade. All data other than flat and peak quarterly pricing is implied.

| Futures settlement prices for flat load (all times) | | CalYear | FinYear Ending | Q1 | Q2 | Q3 | Q4 |
|---|--|---------|----------------|-------|-------|-------|-------|
| | | 2009 | | 71.00 | 36.55 | 36.85 | 46.00 |
| | | 2010 | 52.31 | 47.66 | 71.50 | 36.70 | 45.90 |
| | | 2011 | 64.81 | 60.62 | 91.50 | 50.25 | 52.00 |
| | | 2012 | | | | | |

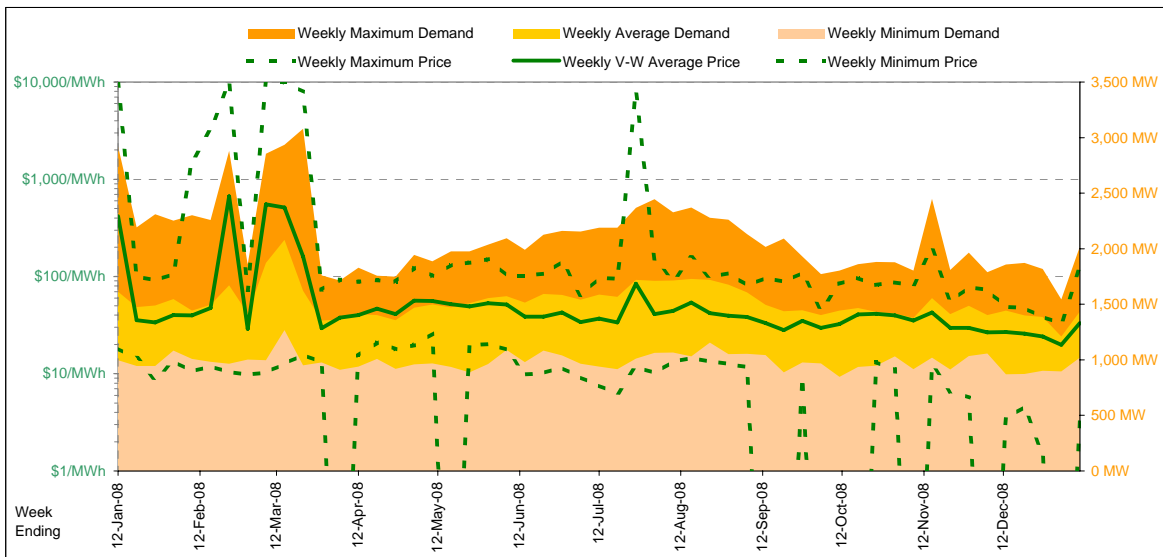
| Futures settlement prices for peak load (7am-10pm M-F) | | CalYear | FinYear Ending | Q1 | Q2 | Q3 | Q4 |
|--|--|---------|----------------|--------|--------|-------|-------|
| | | 2009 | | 127.50 | 49.25 | 48.50 | 70.70 |
| | | 2010 | 77.46 | 74.16 | 129.00 | 49.00 | 56.00 |
| | | 2011 | 86.14 | 82.80 | 140.00 | 60.00 | 60.00 |
| | | 2012 | | | | | |

| Implied Prices for Off-Peak Load (All other times) | | CalYear | FinYear Ending | Q1 | Q2 | Q3 | Q4 |
|--|--|---------|----------------|-------|-------|-------|-------|
| | | 2009 | | 25.44 | 26.31 | 27.45 | 26.08 |
| | | 2010 | 32.03 | 26.29 | 25.13 | 26.78 | 37.75 |
| | | 2011 | 47.61 | 42.73 | 52.39 | 42.39 | 45.55 |
| | | 2012 | | | | | |



Current Year

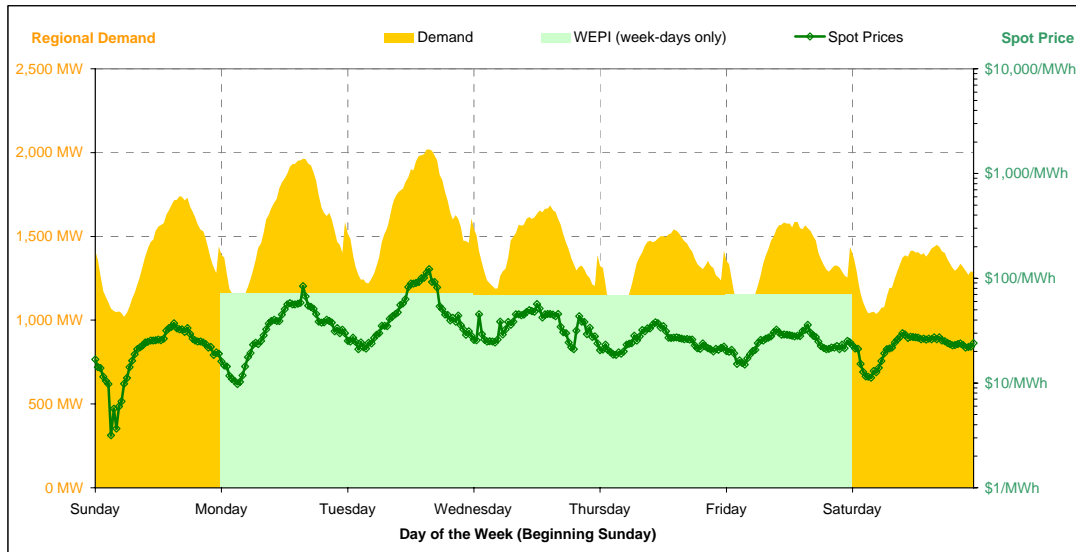
| | | Week 2 Ending Saturday | | 52-Weeks Ending Sat | | |
|---------------------------|--------------------------|------------------------|----------|---------------------|------------|---------------|
| | | 10-Jan-09 | % change | 12-Jan-08 | 10-Jan-09 | Date Occurred |
| Energy (MWh) | Total | 241,166 | -11% | 271,032 | 13,269,568 | |
| | Maximum | 2,018 | -31% | 2,920 | 3,080 | 17-Mar-08 |
| | Average | 1,436 | -11% | 1,613 | 1,519 | |
| Trading Demand (MW) | Minimum | 1,019 | 2% | 998 | 847 | 11-Oct-08 |
| | Regional Load Factor (%) | 71% | | 55% | 49% | |
| Trading Price (\$/MWh) | Maximum | 121.87 | -99% | 9999.72 | 9999.72 | |
| | Volume-Weighted Ave | 33.21 | -92% | 415.97 | 80.06 | |
| | Time-Weighted Ave | 30.90 | -88% | 248.97 | 59.01 | |
| | Minimum | 3.17 | -83% | 18.21 | -1000.00 | |
| Temperature °C (Adelaide) | Maximum | 33.3 | -21% | 42.1 | 40.5 | |
| | Minimum | 13.3 | 2% | 13.0 | 0.7 | |



Current Week

| All Data in this table is shown in MWh | | | | | | | | |
|---|----------------|---------------|---------------|---------------|---------------|---------------|---------------|---------------|
| | Weekly Total | Sunday | Monday | Tuesday | Wednesday | Thursday | Friday | Saturday |
| Total Production by Generation Company | | | | | | | | |
| AGL | 35,273 | 2,867 | 6,418 | 7,507 | 6,622 | 5,332 | 3,703 | 2,826 |
| International Power (Pelican Point) | 65,064 | 8,570 | 9,806 | 10,026 | 9,868 | 8,942 | 9,210 | 8,643 |
| International Power (Synergen) | 0 | 0 | 0 | 0 | 0 | 0 | 0 | 0 |
| Flinders Power | 99,986 | 11,645 | 13,195 | 14,238 | 15,216 | 15,615 | 15,400 | 14,679 |
| Origin Energy | 3,621 | 0 | 1,345 | 1,399 | 877 | 0 | 0 | 0 |
| Osborne | 23,410 | 3,141 | 3,465 | 3,715 | 3,552 | 3,250 | 3,180 | 3,109 |
| TRUenergy | 76 | 0 | 0 | 0 | 3 | 73 | 0 | 0 |
| Other SA Plants | 7,108 | 663 | 827 | 581 | 962 | 1,828 | 1,131 | 1,117 |
| Total internal production | 234,537 | 26,886 | 35,055 | 37,465 | 37,099 | 35,038 | 32,623 | 30,373 |
| (Load at Pumped Storage) | 0 | 0 | 0 | 0 | 0 | 0 | 0 | 0 |
| Net internal production | 234,537 | 26,886 | 35,055 | 37,465 | 37,099 | 35,038 | 32,623 | 30,373 |
| Percentage each company's production represents of the total internal production | | | | | | | | |
| AGL | 15.0% | 10.7% | 18.3% | 20.0% | 17.8% | 15.2% | 11.4% | 9.3% |
| International Power (Pelican Point) | 27.7% | 31.9% | 28.0% | 26.8% | 26.6% | 25.5% | 28.2% | 28.5% |
| International Power (Synergen) | 0.0% | 0.0% | 0.0% | 0.0% | 0.0% | 0.0% | 0.0% | 0.0% |
| Flinders Power | 42.6% | 43.3% | 37.6% | 38.0% | 41.0% | 44.6% | 47.2% | 48.3% |
| Origin Energy | 1.5% | 0.0% | 3.8% | 3.7% | 2.4% | 0.0% | 0.0% | 0.0% |
| Osborne | 10.0% | 11.7% | 9.9% | 9.9% | 9.6% | 9.3% | 9.7% | 10.2% |
| TRUenergy | 0.0% | 0.0% | 0.0% | 0.0% | 0.0% | 0.2% | 0.0% | 0.0% |
| Other SA Plants | 3.0% | 2.5% | 2.4% | 1.6% | 2.6% | 5.2% | 3.5% | 3.7% |
| Total Percentage | 100.0% | 100.0% | 100.0% | 100.0% | 100.0% | 100.0% | 100.0% | 100.0% |

Current Week (continued)



| | Sunday | Monday | Tuesday | Wednesday | Thursday | Friday | Saturday |
|---|---------------------|--------|---------|-----------|----------|---------|----------|
| For the Current Week | | | | | | | |
| Total Energy (MWh) | 33,586 | 37,848 | 39,306 | 34,551 | 32,132 | 32,800 | 30,945 |
| Trading Demand Target (MW) | Maximum | 1,739 | 1,963 | 2,018 | 1,685 | 1,541 | 1,460 |
| | Average | 1,399 | 1,577 | 1,638 | 1,440 | 1,339 | 1,367 |
| | Minimum | 1,019 | 1,098 | 1,220 | 1,187 | 1,054 | 1,072 |
| Regional Load Factor (%) | 80% | 80% | 81% | 85% | 87% | 86% | 88% |
| Wholesale Electricity Price Index (WEPI) | N/A | 71.47 | 71.37 | 68.50 | 68.25 | 69.87 | N/A |
| | Maximum | 37.19 | 84.06 | 121.87 | 56.88 | 38.13 | 29.84 |
| | Volume-Weighted Ave | 22.66 | 38.22 | 54.83 | 37.07 | 25.88 | 25.03 |
| Trading Price (\$/MWh) | Time-Weighted Ave | 21.28 | 35.33 | 50.92 | 36.29 | 25.46 | 22.55 |
| | Minimum | 3.17 | 9.77 | 21.05 | 21.00 | 18.56 | 11.29 |
| | Maximum | 33.3 | 30.5 | 31.0 | 25.1 | 23.8 | 26.0 |
| Temperature °C (Adelaide) | Minimum | 15.1 | 14.6 | 15.2 | 16.0 | 14.3 | 13.8 |
| Percentage Change from Same Week Last Year | | | | | | | |
| Total Energy (MWh) | 6% | 6% | 8% | -19% | -38% | -18% | -4% |
| Trading Demand Target (MW) | Maximum | 11% | 10% | 7% | -30% | -47% | -21% |
| | Average | 6% | 6% | 8% | -19% | -38% | -18% |
| | Minimum | 2% | -0% | 9% | 11% | -19% | -20% |
| Wholesale Electricity Price Index (WEPI) | N/A | -16% | -18% | -23% | -71% | -17% | N/A |
| | Maximum | -47% | 23% | 150% | -24% | -100% | -22% |
| | Volume-Weighted Ave | -41% | -12% | 53% | -17% | -99% | -45% |
| Trading Price (\$/MWh) | Time-Weighted Ave | -42% | -14% | 49% | -13% | -98% | -45% |
| | Minimum | -84% | -49% | 15% | 5% | -12% | -40% |
| | Maximum | 21% | 6% | 2% | -31% | -43% | -13% |
| Temperature °C (Adelaide) | Minimum | -19% | 4% | 14% | 1% | -33% | -34% |
| For the Same Week Last Year | | | | | | | |
| Total Energy (MWh) | 31,783 | 35,557 | 36,351 | 42,835 | 52,008 | 40,240 | 32,259 |
| Trading Demand Target (MW) | Maximum | 1,570 | 1,783 | 1,890 | 2,396 | 2,920 | 2,010 |
| | Average | 1,324 | 1,482 | 1,515 | 1,785 | 2,167 | 1,677 |
| | Minimum | 998 | 1,101 | 1,120 | 1,067 | 1,301 | 1,337 |
| Regional Load Factor (%) | 84% | 83% | 80% | 74% | 74% | 83% | 89% |
| Wholesale Electricity Price Index (WEPI) | N/A | 84.99 | 86.63 | 88.78 | 233.39 | 84.58 | N/A |
| | Maximum | 70.11 | 68.36 | 48.67 | 74.51 | 9999.72 | 64.73 |
| | Volume-Weighted Ave | 38.30 | 43.54 | 35.78 | 44.88 | 1999.80 | 45.37 |
| Trading Price (\$/MWh) | Time-Weighted Ave | 36.86 | 41.16 | 34.26 | 41.65 | 1516.34 | 44.30 |
| | Minimum | 19.36 | 19.20 | 18.25 | 20.00 | 21.14 | 25.21 |
| | Maximum | 27.6 | 28.8 | 30.3 | 36.5 | 42.1 | 30.0 |
| Temperature °C (Adelaide) | Minimum | 18.7 | 14.0 | 13.3 | 15.8 | 21.3 | 13.0 |

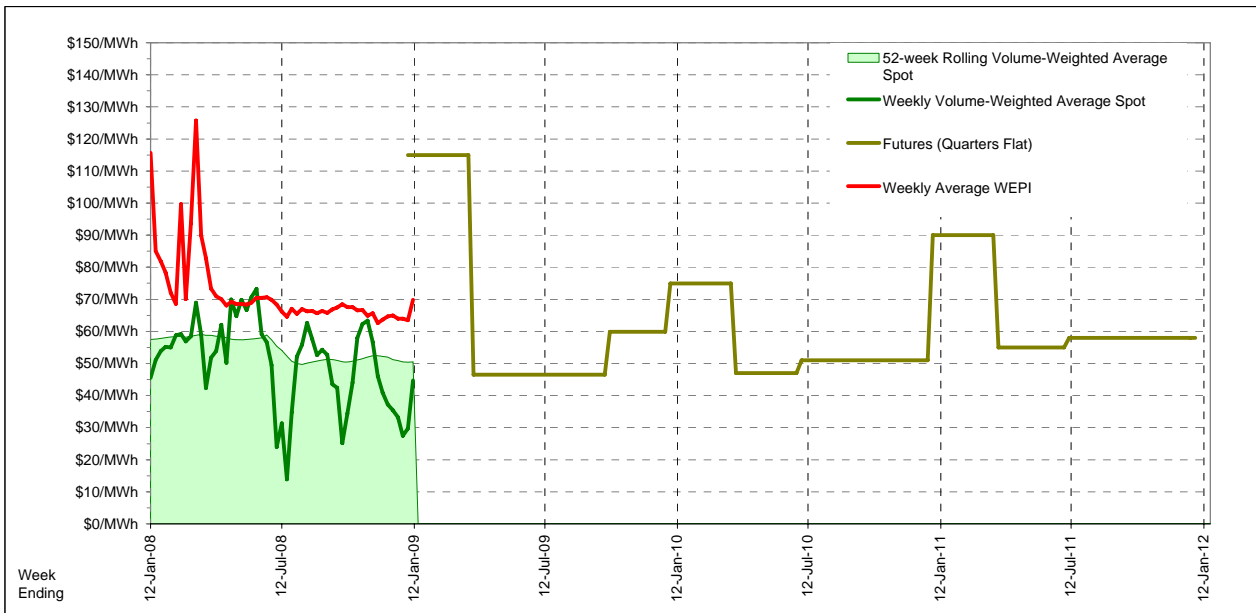
Long-Term Trends

This table contains electricity futures pricing, supplied by d-cyphatrade. All data other than flat and peak quarterly pricing is implied.

| <i>Futures settlement prices</i> for flat load (all times) | CalYear | FinYear Ending | Q1 | Q2 | Q3 | Q4 |
|---|---------|-------------------|--------|-------|-------|-------|
| 2009 | | | 115.00 | 46.50 | 46.50 | 59.85 |
| 2010 | 55.92 | 57.02 | 75.00 | 47.00 | 51.00 | 51.00 |
| 2011 | 65.14 | 61.61 | 90.00 | 55.00 | 58.00 | 58.00 |
| 2012 | | | | | | |

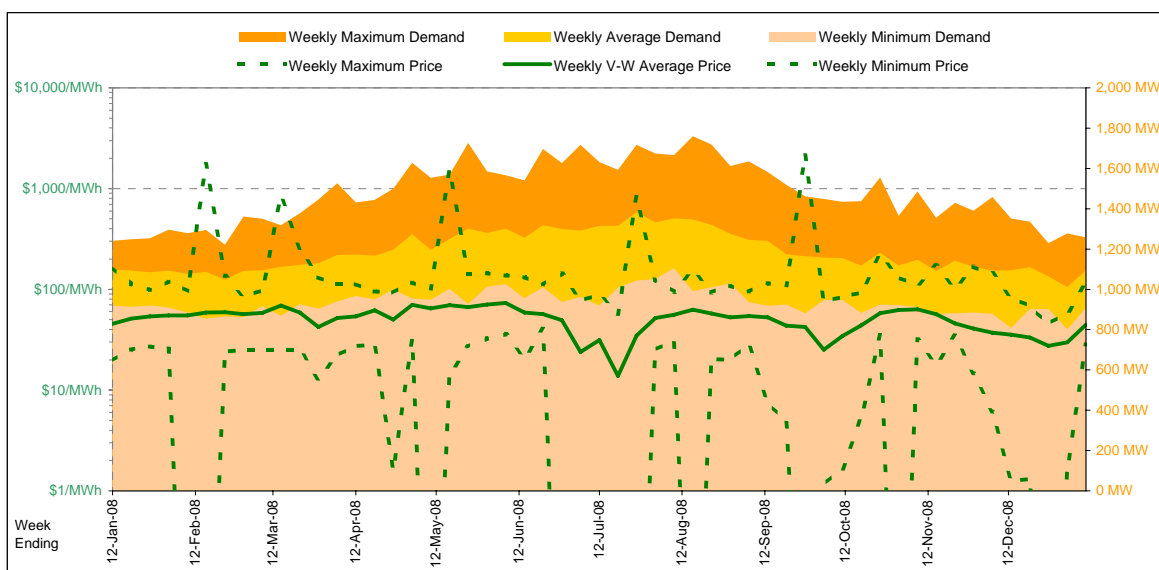
| <i>Futures settlement prices</i> for peak load (7am-10pm M-F) | CalYear | FinYear Ending | Q1 | Q2 | Q3 | Q4 |
|---|---------|-------------------|--------|-------|-------|-------|
| 2009 | | | 200.00 | 62.00 | 50.70 | 86.50 |
| 2010 | 78.02 | 75.30 | 102.00 | 63.00 | 73.00 | 74.00 |
| 2011 | 55.88 | 70.94 | 100.00 | 36.50 | 42.75 | 45.50 |
| 2012 | | | | | | |

| <i>Implied Prices</i> for Off-Peak Load (All other times) | CalYear | FinYear Ending | Q1 | Q2 | Q3 | Q4 |
|---|---------|-------------------|-------|-------|-------|-------|
| 2009 | | | 46.45 | 34.00 | 43.11 | 38.36 |
| 2010 | 38.10 | 42.28 | 53.23 | 34.10 | 33.26 | 32.45 |
| 2011 | 72.61 | 54.09 | 81.94 | 69.92 | 70.30 | 68.08 |
| 2012 | | | | | | |



Current Year

| | | Week 2 Ending Saturday | | 52-Weeks Ending Sat | | |
|-------------------------|--------------------------|------------------------|----------|---------------------|------------|---------------|
| | | 10-Jan-09 | % change | 12-Jan-08 | 10-Jan-09 | Date Occurred |
| Energy (MWh) | Total | 183,749 | -0% | 184,648 | 10,361,434 | |
| | Maximum | 1,258 | 1% | 1,241 | 1,760 | 11-Aug-08 |
| | Average | 1,094 | -0% | 1,099 | 1,186 | |
| Trading Demand (MW) | Minimum | 909 | -1% | 919 | 802 | 29-Dec-08 |
| | Regional Load Factor (%) | 87% | | 89% | 67% | |
| Trading Price (\$/MWh) | Maximum | 114.66 | -31% | 166.35 | 2161.53 | |
| | Volume-Weighted Ave | 44.68 | -2% | 45.54 | 50.76 | |
| | Time-Weighted Ave | 44.47 | -1% | 44.77 | 49.77 | |
| | Minimum | 28.24 | 44% | 19.63 | -999.61 | |
| Temperature °C (Hobart) | Maximum | 26.0 | -27% | 35.5 | 37.3 | |
| | Minimum | 8.5 | -24% | 11.2 | 0.3 | |

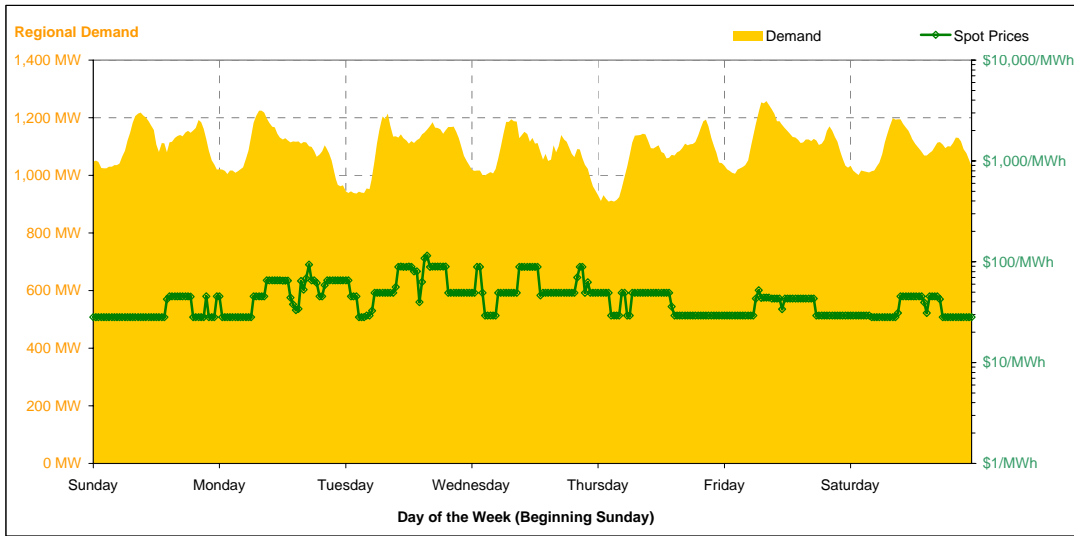


Note that prices below \$1/MWh have been reset to \$1/MWh for the purposes of this display

Current Week

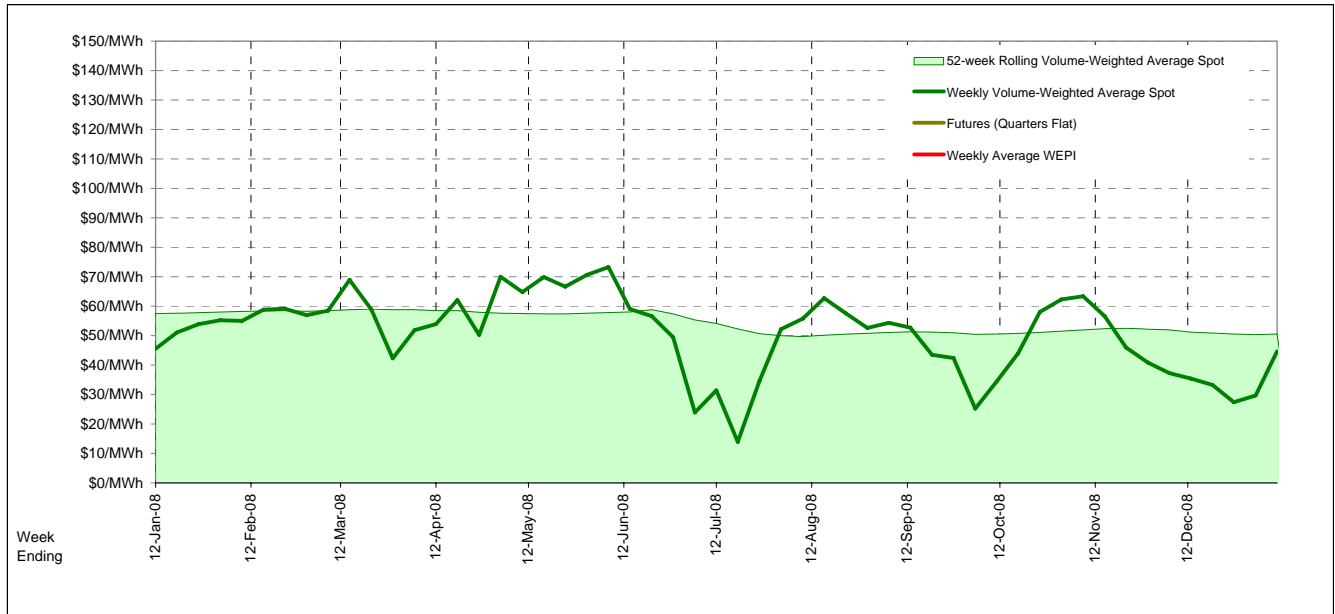
| All Data in this table is shown in MWh | | | | | | | | |
|---|----------------|---------------|---------------|---------------|---------------|---------------|---------------|---------------|
| Weekly Total | Sunday | Monday | Tuesday | Wednesday | Thursday | Friday | Saturday | |
| Total Production by Generation Company | | | | | | | | |
| Hydro Tasmania | 93,775 | 13,603 | 13,850 | 14,556 | 12,798 | 12,304 | 13,763 | 12,903 |
| Bell Bay Power | 19,823 | 2,832 | 2,832 | 2,832 | 2,832 | 2,832 | 2,832 | 2,831 |
| Other TAS Plants | 0 | 0 | 0 | 0 | 0 | 0 | 0 | 0 |
| Total internal production | 113,598 | 16,435 | 16,682 | 17,388 | 15,630 | 15,136 | 16,595 | 15,733 |
| (Load at Pumped Storage) | 0 | 0 | 0 | 0 | 0 | 0 | 0 | 0 |
| Net internal production | 113,598 | 16,435 | 16,682 | 17,388 | 15,630 | 15,136 | 16,595 | 15,733 |
| Percentage each company's production represents of the total internal production | | | | | | | | |
| Hydro Tasmania | 82.6% | 82.8% | 83.0% | 83.7% | 81.9% | 81.3% | 82.9% | 82.0% |
| Bell Bay Power | 17.4% | 17.2% | 17.0% | 16.3% | 18.1% | 18.7% | 17.1% | 18.0% |
| Other TAS Plants | 0.0% | 0.0% | 0.0% | 0.0% | 0.0% | 0.0% | 0.0% | 0.0% |
| Total Percentage | 100.0% | 100.0% | 100.0% | 100.0% | 100.0% | 100.0% | 100.0% | 100.0% |

Current Week (continued)



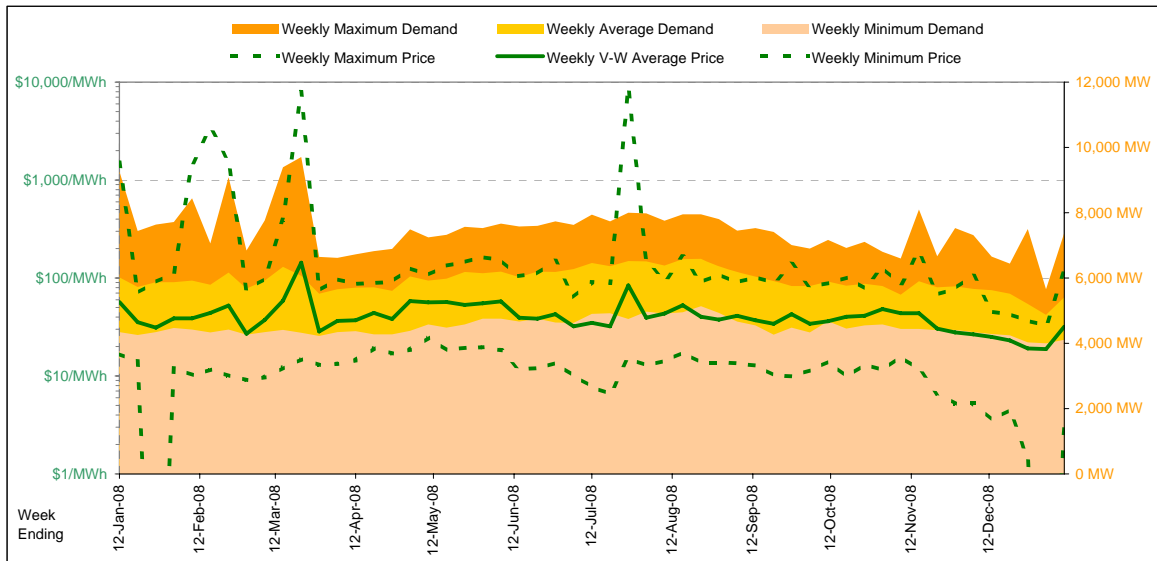
| | | Sunday | Monday | Tuesday | Wednesday | Thursday | Friday | Saturday |
|---|---------------------|--------|--------|---------|-----------|----------|--------|----------|
| For the Current Week | | | | | | | | |
| Total Energy (MWh) | | 26,729 | 26,185 | 26,283 | 25,903 | 25,561 | 26,921 | 26,169 |
| Trading Demand Target (MW) | Maximum | 1,218 | 1,224 | 1,214 | 1,194 | 1,193 | 1,258 | 1,199 |
| | Average | 1,114 | 1,091 | 1,095 | 1,079 | 1,065 | 1,122 | 1,090 |
| | Minimum | 1,020 | 962 | 937 | 947 | 909 | 1,006 | 1,001 |
| Regional Load Factor (%) | Maximum | 45.28 | 93.50 | 114.66 | 89.28 | 49.28 | 52.28 | 45.28 |
| | Average | 32.49 | 50.74 | 63.13 | 58.14 | 38.46 | 36.35 | 33.83 |
| Trading Price (\$/MWh) | Volume-Weighted Ave | 32.46 | 50.52 | 62.18 | 57.81 | 38.56 | 36.03 | 33.70 |
| | Time-Weighted Ave | 28.24 | 28.26 | 28.28 | 29.28 | 29.22 | 29.24 | 28.28 |
| Temperature °C (Hobart) | Maximum | 22.9 | 24.9 | 26.0 | 22.7 | 17.8 | 17.9 | 24.2 |
| | Minimum | 8.5 | 12.2 | 15.3 | 11.6 | 8.9 | 8.6 | 10.6 |
| Percentage Change from Same Week Last Year | | | | | | | | |
| Total Energy (MWh) | | 8% | -3% | -2% | -2% | -4% | 2% | -2% |
| Trading Demand Target (MW) | Maximum | 10% | 0% | -1% | -4% | -3% | 6% | -0% |
| | Average | 8% | -3% | -2% | -2% | -4% | 2% | -2% |
| | Minimum | 11% | -2% | -6% | -4% | -5% | 8% | 0% |
| Trading Price (\$/MWh) | Maximum | -28% | 65% | 90% | 5% | -70% | -47% | 13% |
| | Average | 49% | 62% | 72% | 8% | -48% | -41% | -13% |
| Temperature °C (Hobart) | Maximum | 44% | 38% | 38% | 15% | 15% | -17% | 12% |
| | Minimum | -9% | -9% | 2% | 5% | -47% | -50% | -11% |
| For the Same Week Last Year | | | | | | | | |
| Total Energy (MWh) | | 24,656 | 27,074 | 26,941 | 26,440 | 26,635 | 26,282 | 26,621 |
| Trading Demand Target (MW) | Maximum | 1,103 | 1,221 | 1,223 | 1,241 | 1,231 | 1,191 | 1,202 |
| | Average | 1,027 | 1,128 | 1,123 | 1,102 | 1,110 | 1,095 | 1,109 |
| | Minimum | 919 | 986 | 1,001 | 983 | 955 | 930 | 997 |
| Regional Load Factor (%) | Maximum | 93% | 92% | 92% | 89% | 90% | 92% | 92% |
| | Average | 62.97 | 56.78 | 60.22 | 84.73 | 166.35 | 98.40 | 40.20 |
| Trading Price (\$/MWh) | Volume-Weighted Ave | 21.82 | 31.40 | 36.71 | 53.77 | 73.91 | 61.22 | 38.77 |
| | Time-Weighted Ave | 21.85 | 30.88 | 36.42 | 53.08 | 71.79 | 60.68 | 38.69 |
| Temperature °C (Hobart) | Maximum | 19.63 | 20.52 | 20.52 | 25.45 | 25.45 | 35.22 | 25.20 |
| | Minimum | 25.3 | 27.3 | 25.4 | 21.7 | 33.7 | 35.5 | 27.3 |
| | | 17.7 | 11.2 | 13.2 | 15.7 | 16.6 | 17.5 | 12.4 |

Long-Term Trends



Current Year

| | | Week 2 Ending Saturday | | 52-Weeks Ending Sat | | Date Occurred |
|----------------------------|--------------------------|------------------------|----------|---------------------|------------|---------------|
| | | 10-Jan-09 | % change | 12-Jan-08 | 10-Jan-09 | |
| Energy (MWh) | Total | 908,852 | -10% | 1,011,744 | 51,832,027 | |
| | Maximum | 7,383 | -20% | 9,266 | 9,701 | 17-Mar-08 |
| | Average | 5,410 | -10% | 6,022 | 5,933 | |
| Trading Demand (MW) | Minimum | 4,104 | -6% | 4,344 | 4,004 | 28-Dec-08 |
| | Regional Load Factor (%) | 73% | | 65% | 61% | |
| Trading Price (\$/MWh) | Maximum | 117.00 | -92% | 1516.94 | 8766.23 | |
| | Volume-Weighted Ave | 31.85 | -44% | 56.98 | 42.55 | |
| | Time-Weighted Ave | 30.05 | -39% | 49.40 | 39.49 | |
| | Minimum | 3.02 | -82% | 16.86 | -134.09 | |
| Temperature °C (Melbourne) | Maximum | 30.2 | -27% | 41.2 | 39.2 | |
| | Minimum | 11.6 | -23% | 15.1 | 2.2 | |

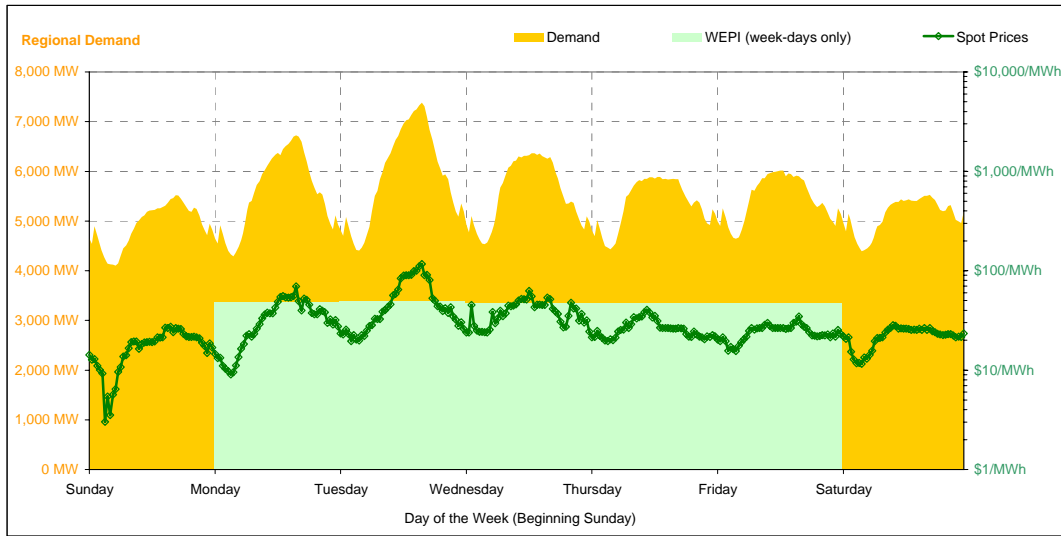


Note that prices below \$1/MWh have been reset to \$1/MWh for the purposes of this display

Current Week

| All Data in this table is shown in MWh | | | | | | | | |
|---|------------------|----------------|----------------|----------------|----------------|----------------|----------------|----------------|
| | Weekly Total | Sunday | Monday | Tuesday | Wednesday | Thursday | Friday | Saturday |
| Total Production by Generation Company | | | | | | | | |
| AGL | 5,728 | 296 | 1,217 | 2,036 | 566 | 542 | 666 | 406 |
| Anglesea | 25,625 | 3,764 | 3,669 | 3,273 | 3,724 | 3,702 | 3,737 | 3,758 |
| Babcock & Brown Power | 3,111 | 35 | 847 | 713 | 760 | 375 | 348 | 35 |
| Ecogen Energy | 22,416 | 0 | 5,070 | 8,853 | 7,094 | 1,400 | 0 | 0 |
| Energy Brix | 21,834 | 3,099 | 3,119 | 3,121 | 3,129 | 3,144 | 3,160 | 3,063 |
| International Power (Hazelwood) | 233,342 | 33,797 | 33,582 | 32,970 | 35,244 | 36,752 | 31,790 | 29,209 |
| Loy Yang B | 166,701 | 23,667 | 22,728 | 24,544 | 22,634 | 22,728 | 25,200 | 25,200 |
| Loy Yang Power | 335,695 | 48,357 | 50,099 | 47,299 | 45,377 | 42,510 | 50,379 | 51,676 |
| Snowy Hydro | 48,730 | 0 | 11,190 | 14,359 | 11,717 | 5,711 | 5,754 | 0 |
| TRUenergy | 192,507 | 35,202 | 27,506 | 25,919 | 25,670 | 25,877 | 26,162 | 26,174 |
| Other VIC Plants | 0 | 0 | 0 | 0 | 0 | 0 | 0 | 0 |
| Total internal production | 1,055,686 | 148,215 | 159,024 | 163,085 | 155,913 | 142,738 | 147,194 | 139,519 |
| (Load at Pumped Storage) | 0 | 0 | 0 | 0 | 0 | 0 | 0 | 0 |
| Net internal production | 1,055,686 | 148,215 | 159,024 | 163,085 | 155,913 | 142,738 | 147,194 | 139,519 |
| Percentage each company's production represents of the total internal production | | | | | | | | |
| AGL | 0.5% | 0.2% | 0.8% | 1.2% | 0.4% | 0.4% | 0.5% | 0.3% |
| Anglesea | 2.4% | 2.5% | 2.3% | 2.0% | 2.4% | 2.6% | 2.5% | 2.7% |
| Babcock & Brown Power | 0.3% | 0.0% | 0.5% | 0.4% | 0.5% | 0.3% | 0.2% | 0.0% |
| Ecogen Energy | 2.1% | 0.0% | 3.2% | 5.4% | 4.5% | 1.0% | 0.0% | 0.0% |
| Energy Brix | 2.1% | 2.1% | 2.0% | 1.9% | 2.0% | 2.2% | 2.1% | 2.2% |
| International Power (Hazelwood) | 22.1% | 22.8% | 21.1% | 20.2% | 22.6% | 25.7% | 21.6% | 20.9% |
| Loy Yang B | 15.8% | 16.0% | 14.3% | 15.0% | 14.5% | 15.9% | 17.1% | 18.1% |
| Loy Yang Power | 31.8% | 32.6% | 31.5% | 29.0% | 29.1% | 29.8% | 34.2% | 37.0% |
| Snowy Hydro | 4.6% | 0.0% | 7.0% | 8.8% | 7.5% | 4.0% | 3.9% | 0.0% |
| TRUenergy | 18.2% | 23.8% | 17.3% | 15.9% | 16.5% | 18.1% | 17.8% | 18.8% |
| Other VIC Plants | 0.0% | 0.0% | 0.0% | 0.0% | 0.0% | 0.0% | 0.0% | 0.0% |
| Total Percentage | 100.0% | 100.0% | 100.0% | 100.0% | 100.0% | 100.0% | 100.0% | 100.0% |

Current Week (continued)



| | Sunday | Monday | Tuesday | Wednesday | Thursday | Friday | Saturday |
|---|---------------------|---------|---------|-----------|----------|---------|----------|
| For the Current Week | | | | | | | |
| Total Energy (MWh) | 117,876 | 133,552 | 141,587 | 133,701 | 128,599 | 130,702 | 122,836 |
| Trading Demand Target (MW) | Maximum | 5,517 | 6,723 | 7,383 | 6,366 | 5,890 | 6,016 |
| | Average | 4,911 | 5,565 | 5,899 | 5,571 | 5,358 | 5,446 |
| | Minimum | 4,104 | 4,292 | 4,406 | 4,532 | 4,431 | 4,642 |
| Regional Load Factor (%) | 89% | 83% | 80% | 88% | 91% | 91% | 93% |
| Wholesale Electricity Price Index (WEPI) | N/A | 48.86 | 49.59 | 47.77 | 46.94 | 47.38 | N/A |
| | Maximum | 27.28 | 69.71 | 117.00 | 62.49 | 40.43 | 34.65 |
| | Minimum | 17.88 | 34.97 | 53.81 | 39.20 | 26.50 | 24.27 |
| Trading Price (\$/MWh) | Volume-Weighted Ave | 17.36 | 33.01 | 49.65 | 38.22 | 26.14 | 23.97 |
| | Time-Weighted Ave | 3.02 | 9.08 | 19.58 | 23.84 | 19.58 | 15.60 |
| | Minimum | 27.6 | 26.1 | 30.2 | 20.9 | 19.8 | 21.8 |
| Temperature °C (Melbourne) | Maximum | 11.6 | 13.6 | 15.8 | 17.6 | 12.6 | 13.3 |
| | Minimum | | | | | | |
| Percentage Change from Same Week Last Year | | | | | | | |
| Total Energy (MWh) | -10% | -1% | 3% | -8% | -25% | -19% | -5% |
| Trading Demand Target (MW) | Maximum | -8% | 3% | 11% | -13% | -36% | -32% |
| | Average | -10% | -1% | 3% | -8% | -25% | -19% |
| | Minimum | -14% | -1% | -3% | 1% | -7% | -10% |
| Wholesale Electricity Price Index (WEPI) | N/A | -24% | -24% | -27% | -36% | -24% | N/A |
| Trading Price (\$/MWh) | Maximum | -63% | 5% | 149% | -12% | -97% | -82% |
| | Volume-Weighted Ave | -53% | -17% | 57% | -5% | -80% | -58% |
| | Time-Weighted Ave | -53% | -18% | 50% | -4% | -77% | -55% |
| Temperature °C (Melbourne) | Maximum | -84% | -49% | 12% | 21% | -2% | -35% |
| | Minimum | 14% | 12% | 27% | -19% | -52% | -42% |
| Minimum | -48% | -11% | -6% | 11% | -28% | -47% | -12% |
| | | | | | | | |
| For the Same Week Last Year | | | | | | | |
| Total Energy (MWh) | 130,385 | 134,927 | 137,344 | 144,908 | 172,371 | 162,237 | 129,574 |
| Trading Demand Target (MW) | Maximum | 5,976 | 6,545 | 6,671 | 7,359 | 9,266 | 8,792 |
| | Average | 5,433 | 5,622 | 5,723 | 6,038 | 7,182 | 6,760 |
| | Minimum | 4,789 | 4,344 | 4,563 | 4,507 | 4,758 | 5,151 |
| Regional Load Factor (%) | 91% | 86% | 86% | 82% | 78% | 77% | 89% |
| Wholesale Electricity Price Index (WEPI) | N/A | 64.54 | 64.92 | 65.13 | 73.12 | 62.11 | N/A |
| | Maximum | 73.91 | 66.63 | 46.92 | 71.09 | 1516.94 | 192.14 |
| | Minimum | 38.24 | 42.31 | 34.19 | 41.44 | 135.49 | 57.29 |
| Trading Price (\$/MWh) | Volume-Weighted Ave | 37.19 | 40.23 | 33.06 | 39.63 | 114.65 | 53.69 |
| | Time-Weighted Ave | 19.37 | 17.90 | 17.41 | 19.71 | 19.90 | 24.05 |
| | Minimum | 24.3 | 23.4 | 23.7 | 25.8 | 41.2 | 37.3 |
| Temperature °C (Melbourne) | Maximum | 22.3 | 15.2 | 16.8 | 15.9 | 17.5 | 23.6 |
| | Minimum | | | | | | |

Long-Term Trends

This table contains electricity futures pricing, supplied by d-cyphatrade. All data other than flat and peak quarterly pricing is implied.

| | | CalYear | FinYear Ending | Q1 | Q2 | Q3 | Q4 |
|---|------|---------|----------------|--------|-------|-------|-------|
| Actual Prices for Flat Load (All Times) | 2009 | | | 53.25 | 44.00 | 43.50 | 41.50 |
| | 2010 | 54.80 | 49.19 | 66.50 | 45.60 | 53.55 | 53.70 |
| | 2011 | 67.25 | 63.79 | 93.45 | 55.00 | 60.00 | 61.00 |
| | 2012 | | | | | | |
| Actual Prices for Peak Load (7am-10pm M-F) | 2009 | | | 92.20 | 61.20 | 61.20 | 60.20 |
| | 2010 | 74.57 | 72.61 | 115.20 | 55.45 | 62.00 | 67.20 |
| | 2011 | 77.57 | 79.20 | 139.20 | 50.20 | 57.20 | 65.55 |
| | 2012 | | | | | | |
| Implied Prices for Off-Peak Load (All other times) | 2009 | | | 21.84 | 30.13 | 29.23 | 26.42 |
| | 2010 | 38.86 | 30.30 | 27.23 | 37.66 | 46.74 | 42.81 |
| | 2011 | 58.93 | 51.36 | 56.55 | 58.87 | 62.26 | 57.33 |
| | 2012 | | | | | | |

