

Investor confidence key to energy investment: esaa

The Energy Supply Association of Australia has told a Senate Committee that the investment challenge for the energy supply sector in coming decades will be significant, with billions of dollars needed to provide new infrastructure, and that investor confidence will be critical.

“esaa considers that the implementation of a well-designed emissions trading scheme is a critical measure for ensuring investor confidence,” esaa acting Chief Executive Officer Clare Savage told a Senate Select Committee on Fuel and Energy hearing in Canberra.

“With both the Carbon Pollution Reduction Scheme and an expanded renewable energy target, that investment challenge for our sector increases threefold, with over \$33 billion in generation investment required over the coming decade and significant new investment required in network infrastructure.”

The Senate Select Committee is, amongst other matters, inquiring into the impact of an emissions trading scheme on the fuel and energy industry and will report to the Senate on 21 October 2009.

esaa supports the CPRS as an efficient price signal for the cost of greenhouse gas emissions, but has outlined four critical issues it says need to be resolved to ensure investor confidence.

The first is adequate structural adjustment assistance to coal-fired generators. esaa says fundamental change to the entire energy supply system will need to take place over a very short time frame if Australia is to reduce its emissions.

ACIL Tasman modelling commissioned by esaa suggests that 6,700 MW of mostly coal-fired generation capacity in the National Electricity Market will have to close prior to its business-as-usual life.

“This is about 15 per cent of our current generating capacity on the eastern seaboard. In addition, 15,000 MW of gas-fired or renewable generation facilities will have to be constructed to replace these closed facilities. This amounts to a third of Australia’s existing installed capacity,” says Savage.

“Early efforts to shift from business-as-usual growth will need to be significant,” Savage says, arguing that the government’s proposed \$3.5 billion of assistance is not enough for the industry to make a smooth and orderly transition to a low-emissions economy.

“The electricity and downstream natural gas industry will provide the government with over \$55 billion in permit revenue over the first decade of the scheme,” says Savage.

“While the white paper has proposed \$3.5 billion of assistance, it is insufficient and considerably lower than the consensus of modelling results – which suggest around \$10 billion of assistance is required over 10 years.”

This week's volume-weighted electricity price (\$/MWh)

NSW:	\$68.48
Vic:	\$619.65
Qld:	\$53.30
SA:	\$694.71
Tas:	\$192.44

Jobs on Offer

List industry jobs

esaa Full Members are invited to submit industry-related employment opportunities. This is a complimentary service. Email notices to newseditor@esaa.com.au by close of business Thursday.

Telecommunications Planning Engineer

ElectraNet is seeking applicants for a **Telecommunications Planning Engineer** role accountable to the Telecommunications Team Leader and responsible for the overall planning of the company's telecommunications network.

Key responsibilities of the position include providing support for the development and review of telecommunication network strategies, developing and maintaining the overall network development plan whilst maintaining consistent network architecture based on the strategy ratified by the EMT and providing concept designs and phase 1 & 2 scope and estimates for projects.

The successful candidate will be able to demonstrate a sound knowledge in the discipline area as well as a solid understanding of relevant standards and NEC technical code requirements.

A Degree in Electrical/Electronic Engineer (telecommunications option preferred) is required. To request a copy of the JD please email hr@electranet.com.au. Applications close 5 pm Friday 13 February 2009.

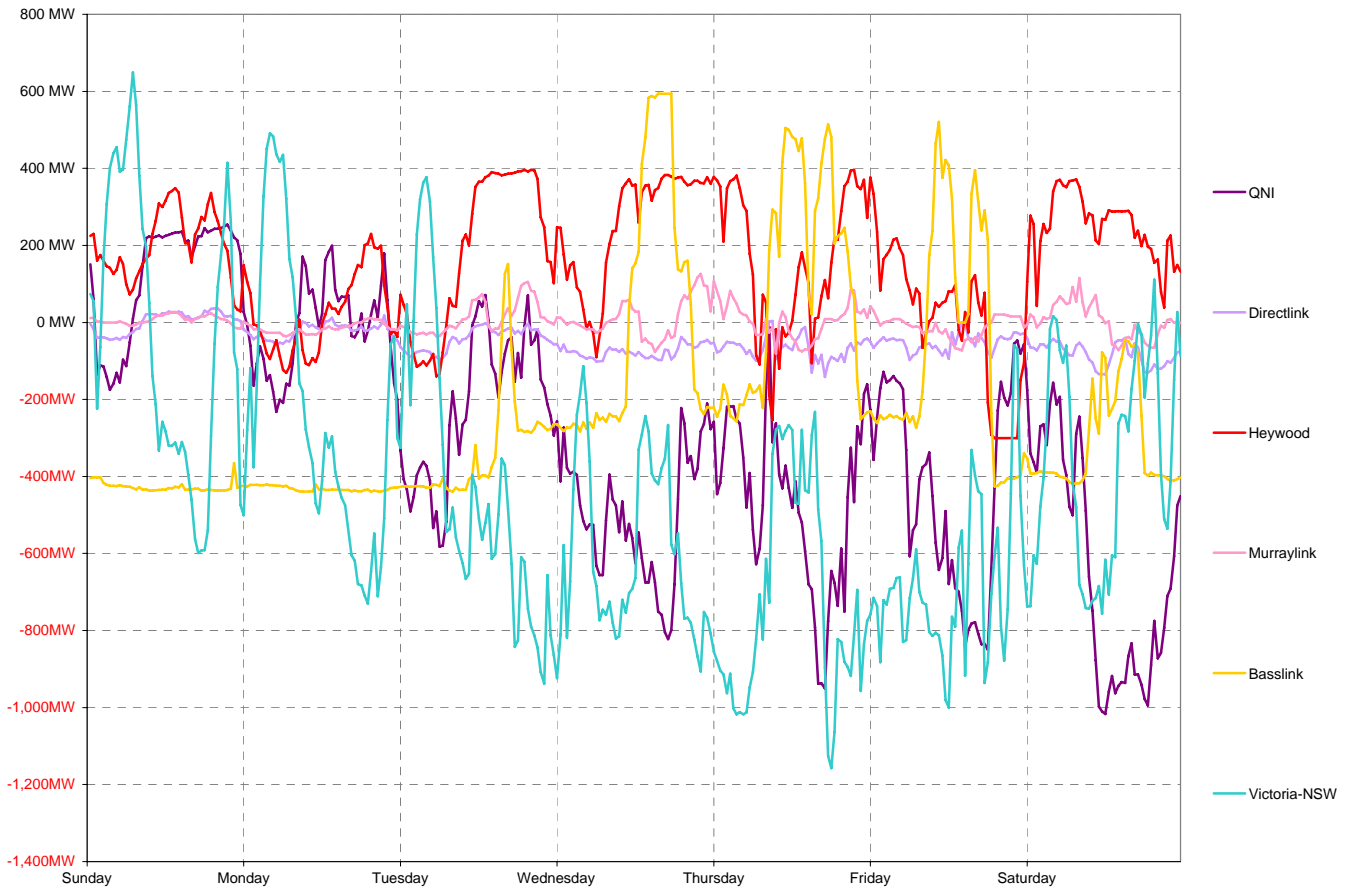
National Electricity Market Report

Week 5 Ending Saturday 31-Jan-09

Daily Inter-Regional Energy Flow

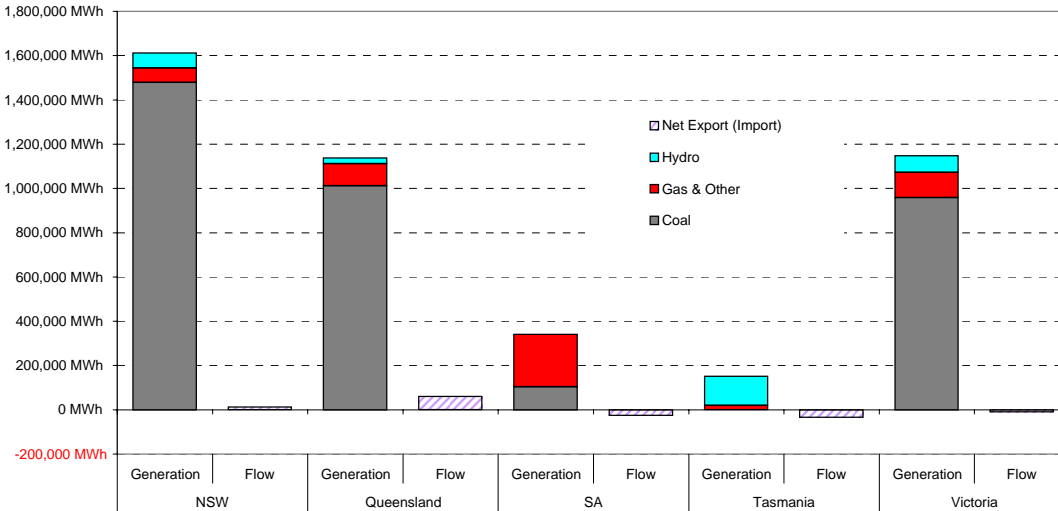
	Daily Net Exports (or Imports)							Weekly Total
	Sunday	Monday	Tuesday	Wednesday	Thursday	Friday	Saturday	
For the Current Week								
NSW	3,845	4,456	4,317	442	4,416	4,842	-9,124	13,194
Queensland	-2,985	1,097	6,279	13,844	12,734	11,491	17,353	59,813
South Australia	-4,983	-65	-4,801	-6,518	-3,983	281	-6,070	-26,138
Tasmania	-10,247	-10,358	-7,919	57	2,084	-1,862	-7,485	-35,729
Victoria	14,369	4,870	2,124	-7,825	-15,251	-14,752	5,325	-11,140
MWh Change from Same Week Last Year								
NSW	17,029	20,275	29,290	25,619	26,990	15,331	5,786	140,317
Queensland	-18,833	-14,032	-8,118	728	2,550	-1,452	252	-38,905
South Australia	-862	3,951	-5,214	-7,753	-5,995	2,032	-4,395	-18,236
Tasmania	-1,300	-189	1,624	7,661	12,211	7,974	2,721	30,702
Victoria	-2,142	-15,344	-3,856	-10,545	-24,810	-22,719	-9,966	-89,380
For the Same Week Last Year								
NSW	-13,184	-15,819	-24,973	-25,177	-22,574	-10,489	-14,909	-127,124
Queensland	15,848	15,129	14,397	13,116	10,185	12,943	17,101	98,718
South Australia	-4,122	-4,015	413	1,235	2,012	-1,751	-1,675	-7,902
Tasmania	-8,947	-10,169	-9,543	-7,605	-10,127	-9,836	-10,206	-66,431
Victoria	16,511	20,213	5,980	2,720	9,559	7,967	15,291	78,240

Interconnector energy flow throughout the week

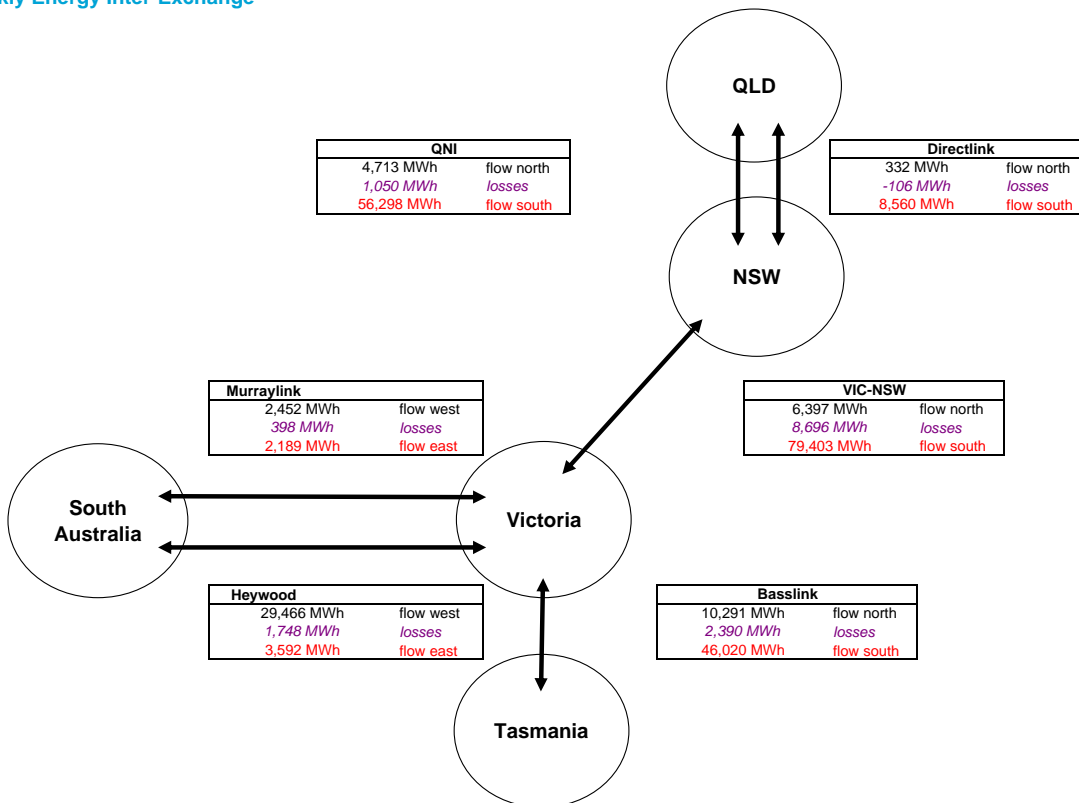


Generation by Fuel Type

	All data in this table is shown in MWh for the week											
	NSW		Queensland		SA		Tasmania		Victoria		Whole of NEM	
	Generation	Flow	Generation	Flow	Generation	Flow	Generation	Flow	Generation	Flow	Generation	Flow
Coal	1,479,190		1,011,775		104,386		0		958,838		3,554,189	
Gas & Other	64,221		100,284		236,561		20,056		113,986		535,108	
Hydro	68,996		25,130		0		131,422		74,258		299,805	
Pump Storage	-4,163		-5,046		0		0		0		-9,209	
Total Generation	1,608,244		1,132,143		340,947		151,478		1,147,082		4,379,893	
Total Exports		84,448		64,858		5,781		10,291		84,334		
Total Imports		71,254		5,045		31,918		46,020		95,474		
Net Export (Import)		13,194		59,813		-26,138		-35,729		-11,140		
Net Consumption	1,595,050		1,072,330		367,085		187,207		1,158,222			

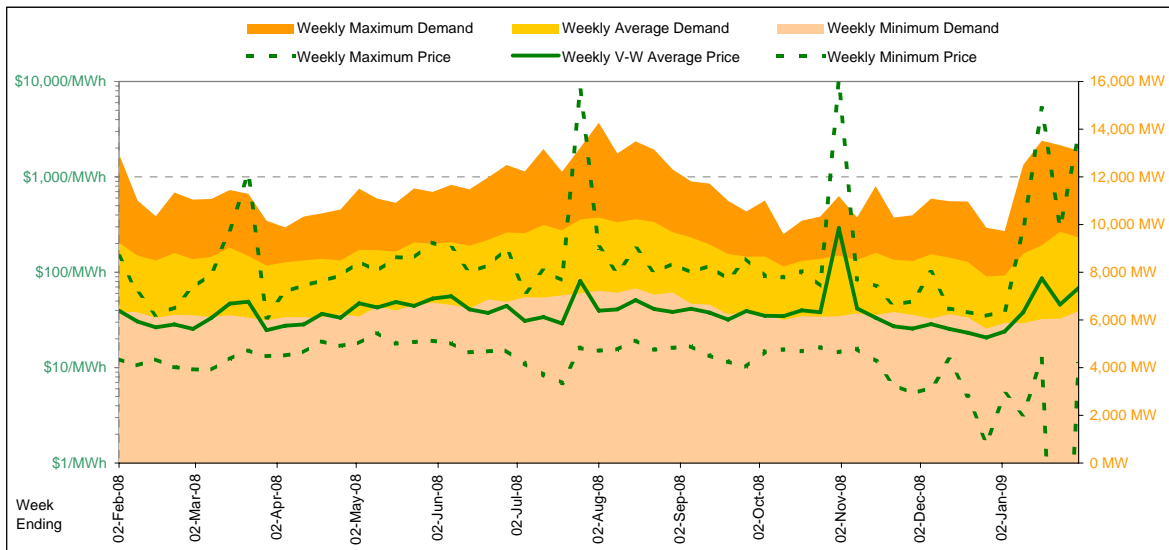


Weekly Energy Inter-Exchange



Current Year

		Week 5 Ending Saturday			52-weeks ending Sat	
		31-Jan-09	% change	2-Feb-08	31-Jan-09	Date Occurred
Energy (MWh)	Total	1,589,194	2%	1,550,782	78,511,047	
	Maximum	13,096	1%	12,954	14,274	28-Aug-08
	Average	9,459	2%	9,231	8,987	
Trading Demand (MW)	Maximum	6,376	0%	6,361	5,632	26-Dec-08
	Average					
	Minimum					
Regional Load Factor (%)		72%		71%	63%	
Trading Price (\$/MWh)	Maximum	2657.59	1,716%	146.38	10000.00	
	Volume-Weighted Ave	68.48	73%	39.56	43.93	
	Time-Weighted Ave	58.03	61%	36.08	40.30	
	Minimum	11.08	-10%	12.35	-170.76	
Temperature °C (Sydney)	Maximum	29.1	5%	27.7	40.9	
	Minimum	19.9	6%	18.8	5.3	

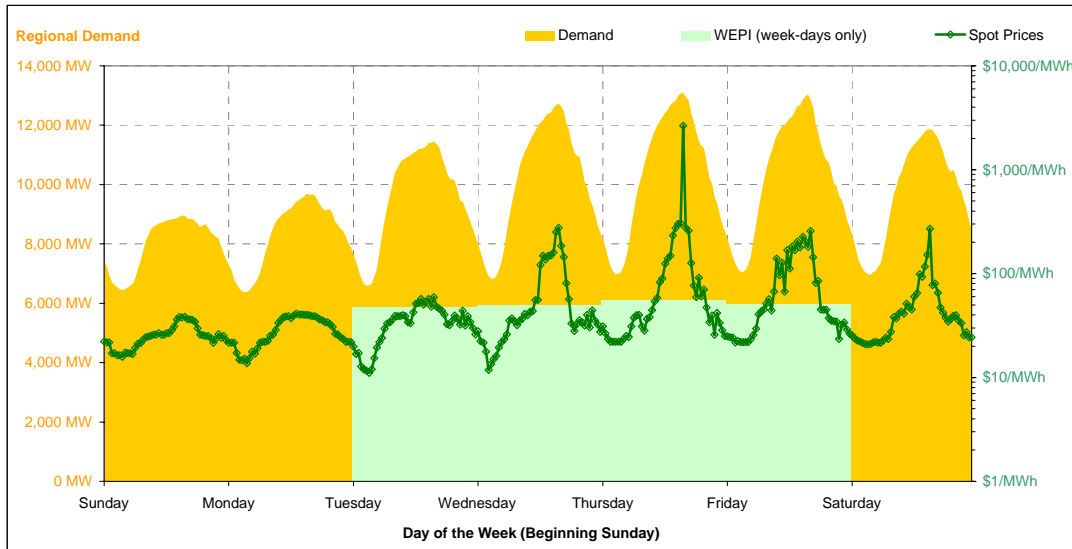


Note that prices below \$1/MWh have been reset to \$1/MWh for the purposes of this display

Current Week

All Data in this table is shown in MWh								
	Weekly Total	Sunday	Monday	Tuesday	Wednesday	Thursday	Friday	Saturday
Total Production by Generation Company								
Babcock & Brown Power	13,799	3,096	1,707	1,705	1,705	1,704	1,733	2,150
Delta Electricity	558,268	72,067	74,676	80,269	80,194	82,543	86,676	81,845
Eraring Energy	300,683	38,722	40,233	45,266	44,628	47,017	45,450	39,368
Macquarie Generation	606,458	76,079	77,583	89,052	90,791	93,163	92,339	87,454
Marubeni	18,720	1,920	1,920	3,248	3,242	3,234	3,237	1,920
Snowy Hydro (NSW)	68,996	4,152	5,543	7,376	13,764	17,500	13,818	6,844
TRUenergy	29,007	0	2,562	4,020	6,539	5,579	5,833	4,474
Origin Energy	16,478	0	0	2,890	3,550	3,455	3,993	2,591
Other NSW Plants	0	0	0	0	0	0	0	0
Total internal production	1,612,407	196,035	204,222	233,825	244,411	254,193	253,077	226,644
(Load at Pumped Storage)	-4,163	0	0	0	0	0	0	-4,163
Net internal production	1,608,244	196,035	204,222	233,825	244,411	254,193	253,077	222,481
Percentage each company's production represents of the total internal production								
Babcock & Brown Power	0.9%	1.6%	0.8%	0.7%	0.7%	0.7%	0.7%	0.9%
Delta Electricity	34.6%	36.8%	36.6%	34.3%	32.8%	32.5%	34.2%	36.1%
Eraring Energy	18.6%	19.8%	19.7%	19.4%	18.3%	18.5%	18.0%	17.4%
Macquarie Generation	37.6%	38.8%	38.0%	38.1%	37.1%	36.7%	36.5%	38.6%
Marubeni	1.2%	1.0%	0.9%	1.4%	1.3%	1.3%	1.3%	0.8%
Snowy Hydro (NSW)	4.3%	2.1%	2.7%	3.2%	5.6%	6.9%	5.5%	3.0%
TRUenergy	1.8%	0.0%	1.3%	1.7%	2.7%	2.2%	2.3%	2.0%
Origin Energy	1.0%	0.0%	0.0%	1.2%	1.5%	1.4%	1.6%	1.1%
Other NSW Plants	0.0%	0.0%	0.0%	0.0%	0.0%	0.0%	0.0%	0.0%
Total Percentage	100.0%	100.0%	100.0%	100.0%	100.0%	100.0%	100.0%	100.0%

Current Week (continued)



	Sunday	Monday	Tuesday	Wednesday	Thursday	Friday	Saturday
For the Current Week							
Total Energy (MWh)	191,849	199,408	228,801	242,943	248,377	246,974	230,844
Trading Demand Target (MW)	Maximum	8,951	9,698	11,449	12,730	13,096	11,864
	Average	7,994	8,309	9,533	10,123	10,349	10,291
	Minimum	6,436	6,376	6,601	6,835	6,976	6,954
Regional Load Factor (%)	89%	86%	83%	80%	79%	79%	81%
Wholesale Electricity Price Index (WEPI)	N/A	#N/A	47.54	49.84	55.82	51.12	N/A
	Maximum	38.31	41.15	59.14	275.76	2657.59	269.11
	Volume-Weighted Ave	25.80	29.60	36.46	70.66	157.78	86.59
Trading Price (\$/MWh)	Time-Weighted Ave	25.22	28.45	34.40	62.36	132.32	76.54
	Minimum	15.83	13.70	11.08	11.82	22.00	21.82
	Maximum	25.9	26.8	23.9	27.1	28.3	29.1
Temperature °C (Sydney)	20.5	20.8	20.2	19.9	21.2	21.1	21.8
Percentage Change from Same Week Last Year							
Total Energy (MWh)	-3%	-2%	-5%	-2%	2%	14%	14%
Trading Demand Target (MW)	Maximum	-8%	-5%	-10%	-2%	4%	25%
	Average	-3%	-2%	-5%	-2%	2%	14%
	Minimum	1%	-1%	0%	-2%	-1%	4%
Wholesale Electricity Price Index (WEPI)	N/A	N/A	-9%	-6%	8%	2%	N/A
	Maximum	14%	-38%	-39%	88%	3,129%	490%
	Volume-Weighted Ave	4%	-1%	-27%	23%	243%	168%
Trading Price (\$/MWh)	Time-Weighted Ave	5%	0%	-24%	20%	210%	145%
	Minimum	28%	-9%	-31%	-41%	10%	58%
	Maximum	-3%	-2%	-12%	-2%	2%	26%
Temperature °C (Sydney)	9%	-2%	-5%	-15%	-7%	8%	12%
For the Same Week Last Year							
Total Energy (MWh)	197,908	203,821	240,249	246,931	242,604	217,151	202,120
Trading Demand Target (MW)	Maximum	9,730	10,159	12,750	12,954	12,634	10,400
	Average	8,246	8,493	10,010	10,289	10,108	9,048
	Minimum	6,361	6,415	6,594	6,964	7,017	6,781
Regional Load Factor (%)	85%	84%	79%	79%	80%	87%	88%
Wholesale Electricity Price Index (WEPI)	N/A	49.63	52.08	52.91	51.80	50.06	N/A
	Maximum	33.67	66.52	97.04	146.38	82.30	43.50
	Volume-Weighted Ave	24.91	29.84	50.09	57.42	46.01	32.36
Trading Price (\$/MWh)	Time-Weighted Ave	24.10	28.44	45.47	52.08	42.67	31.28
	Minimum	12.35	15.08	15.99	20.01	19.93	13.77
	Maximum	26.6	27.3	27.1	27.6	27.7	22.4
Temperature °C (Sydney)	18.8	21.2	21.3	23.4	22.8	19.5	19.5

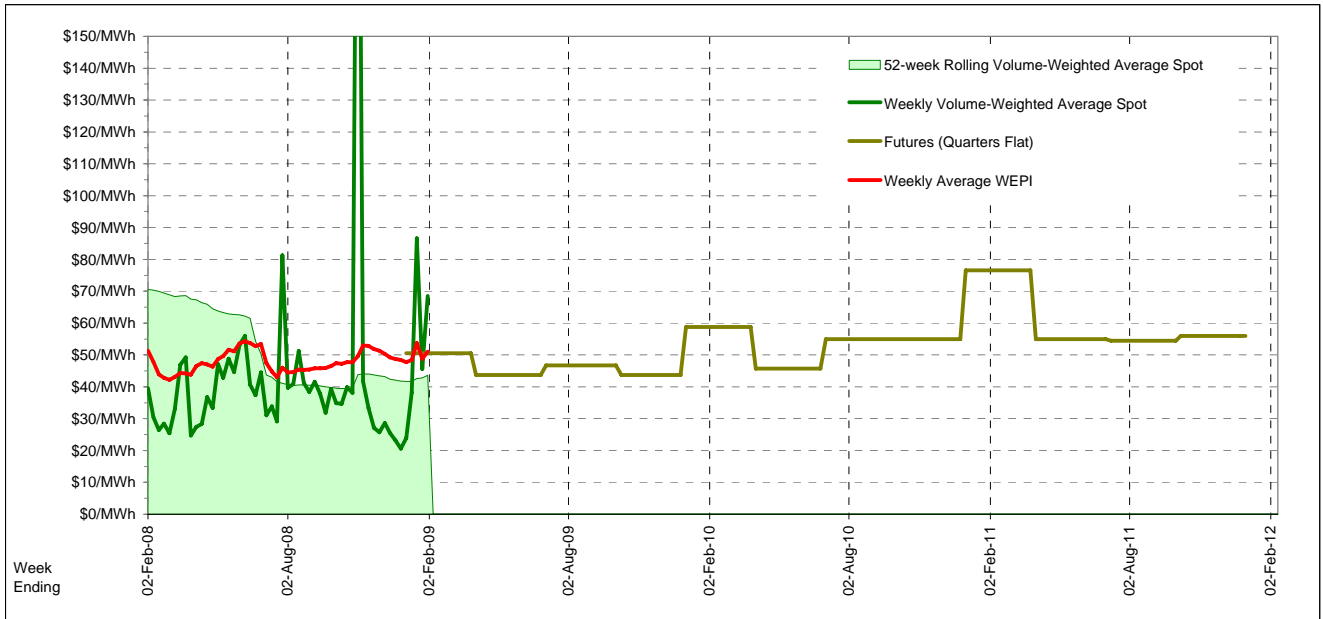
Long-Term Trends

This table contains electricity futures pricing, supplied by d-cyphatrade. All data other than flat and peak quarterly pricing is implied.

Futures settlement prices for flat load (all times)		CalYear	FinYear Ending	Q1	Q2	Q3	Q4
		2009		50.50	43.75	46.75	43.75
		2010	53.62	48.70	58.75	45.75	55.00
		2011	60.44	60.31	76.55	55.00	56.00
		2012					

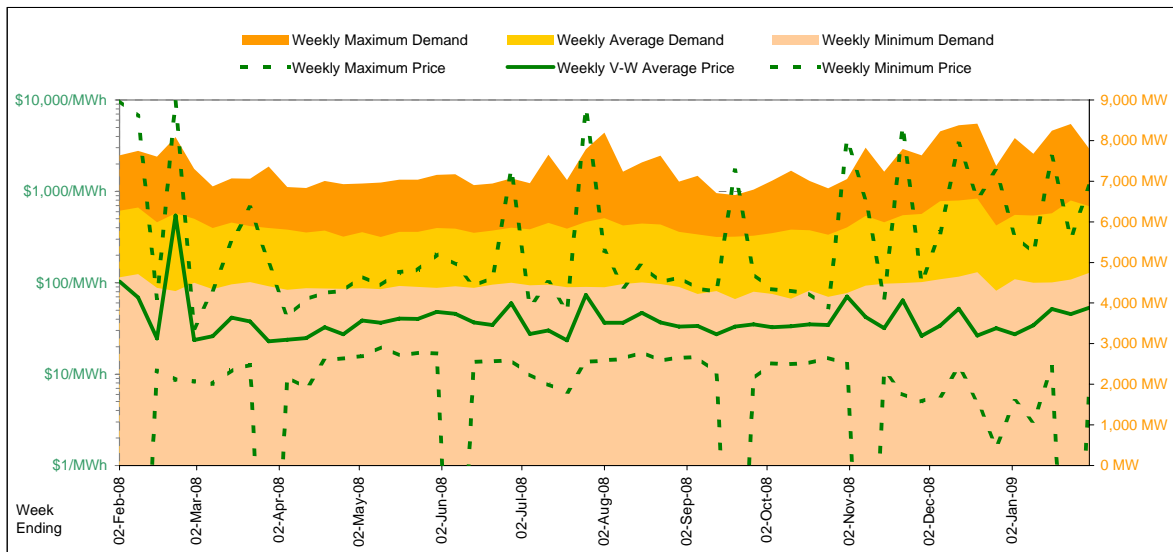
Futures settlement prices for peak load (7am-10pm M-F)		CalYear	FinYear Ending	Q1	Q2	Q3	Q4
		2009		75.00	63.00	65.00	65.00
		2010	78.30	71.39	90.00	66.00	79.00
		2011	55.51	71.53	78.25	50.00	51.00
		2012					

Implied Prices for Off-Peak Load (All other times)		CalYear	FinYear Ending	Q1	Q2	Q3	Q4
		2009		30.74	28.23	32.03	26.61
		2010	33.72	30.40	33.55	29.42	35.65
		2011	64.42	51.26	75.18	59.03	66.48
		2012					



Current Year

Energy (MWh)	Total	Week 5 Ending Saturday		52-Weeks Ending Sat		Date Occurred
		31-Jan-09	% change	2-Feb-08	31-Jan-09	
Trading Demand (MW)	Maximum	7,794	2%	7,634	8,413	19-Dec-08
	Average	6,380	2%	6,271	5,949	
	Minimum	4,741	2%	4,635	4,100	20-Sep-08
Regional Load Factor (%)		82%		82%	71%	
Trading Price (\$/MWh)	Maximum	1134.99	-89%	9920.99	9561.42	
	Volume-Weighted Ave	53.30	-48%	103.14	48.22	
	Time-Weighted Ave	49.15	-47%	92.94	43.35	
	Minimum	7.50	102%	-308.24	-500.34	
Temperature °C (Brisbane)	Maximum	31.0	0%	31.0	40.2	
	Minimum	20.3	-1%	20.5	3.7	

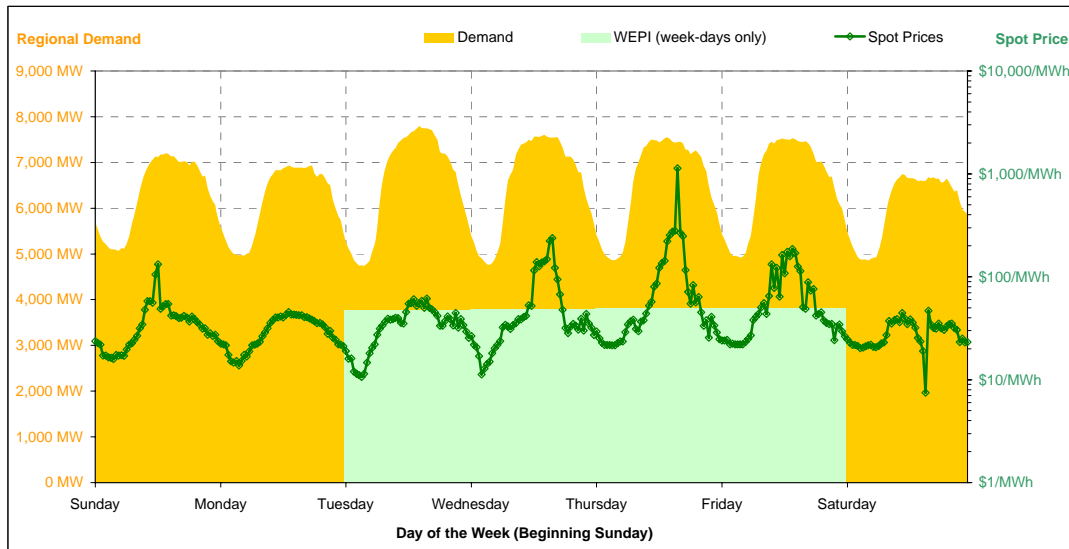


Note that prices below \$1/MWh have been reset to \$1/MWh for the purposes of this display

Current Week

All Data in this table is shown in MWh								
	Weekly Total	Sunday	Monday	Tuesday	Wednesday	Thursday	Friday	Saturday
Total Production by Generation Company								
AGL	27,863	217	3,507	4,695	5,103	5,643	5,291	3,408
Babcock & Brown Power	35,059	5,151	4,663	3,903	5,683	5,571	5,138	4,951
Callide Power Trading	113,934	9,599	10,302	18,241	18,325	19,107	19,698	18,664
CS Energy	282,723	40,049	38,310	39,752	43,583	39,954	40,158	40,918
Millmerran Energy Trader	80,204	10,432	10,437	10,439	10,413	10,432	10,427	17,627
Origen Energy	7,502	1,370	741	749	739	1,310	1,867	727
Stanwell	361,846	49,807	48,680	52,789	52,372	54,425	55,325	48,450
Tarong Energy	164,668	23,355	22,329	24,125	24,542	24,688	24,425	21,205
Tarong North Trader	63,002	8,639	9,675	9,147	9,698	9,803	8,233	7,809
Other QLD Plants	390	0	0	0	101	130	159	0
Total internal production	1,137,189	148,617	148,642	163,839	170,557	171,060	170,719	163,757
(Load at Pumped Storage)	-5,046	0	0	0	-82	-1,410	-2,086	-1,468
Net internal production	1,132,143	148,617	148,642	163,839	170,475	169,650	168,633	162,289
Percentage each company's production represents of the total internal production								
AGL	2.5%	0.1%	2.4%	2.9%	3.0%	3.3%	3.1%	2.1%
Babcock & Brown Power	3.1%	3.5%	3.1%	2.4%	3.3%	3.3%	3.0%	3.0%
Callide Power Trading	10.0%	6.5%	6.9%	11.1%	10.7%	11.2%	11.5%	11.4%
CS Energy	24.9%	26.9%	25.8%	24.3%	25.6%	23.4%	23.5%	25.0%
Millmerran Energy Trader	7.1%	7.0%	7.0%	6.4%	6.1%	6.1%	6.1%	10.8%
Origen Energy	0.7%	0.9%	0.5%	0.5%	0.4%	0.8%	1.1%	0.4%
Stanwell	31.8%	33.5%	32.7%	32.2%	30.7%	31.8%	32.4%	29.6%
Tarong Energy	14.5%	15.7%	15.0%	14.7%	14.4%	14.4%	14.3%	12.9%
Tarong North Trader	5.5%	5.8%	6.5%	5.6%	5.7%	5.7%	4.8%	4.8%
Other QLD Plants	0.0%	0.0%	0.0%	0.0%	0.1%	0.1%	0.1%	0.0%
Total Percentage	100.0%	100.0%	100.0%	100.0%	100.0%	100.0%	100.0%	100.0%

Current Week (continued)



	Sunday	Monday	Tuesday	Wednesday	Thursday	Friday	Saturday
For the Current Week							
Total Energy (MWh)	151,489	147,540	157,560	156,591	156,884	157,116	144,722
Trading Demand Target (MW)	Maximum	7,200	6,936	7,794	7,609	7,552	6,748
	Average	6,312	6,148	6,565	6,525	6,537	6,030
	Minimum	5,069	4,965	4,741	4,759	4,863	4,857
Regional Load Factor (%)	88%	89%	84%	86%	87%	87%	89%
Wholesale Electricity Price Index (WEPI)	N/A	#N/A	47.56	48.03	49.07	49.53	N/A
	Maximum	132.34	45.40	61.59	237.60	1134.99	186.70
	Volume-Weighted Ave	38.07	30.94	37.16	61.02	106.53	66.76
Trading Price (\$/MWh)	Time-Weighted Ave	36.23	29.79	34.98	55.99	96.80	61.92
	Minimum	15.83	13.71	10.60	11.28	21.62	21.99
	Temperature °C (Brisbane)	Maximum	31.0	30.5	30.5	30.1	29.0
Minimum	25.2	23.1	22.1	20.8	21.1	20.3	0.0
Percentage Change from Same Week Last Year							
Total Energy (MWh)	8%	1%	0%	2%	0%	2%	-0%
Trading Demand Target (MW)	Maximum	7%	-2%	2%	3%	-1%	0%
	Average	8%	1%	0%	2%	0%	2%
	Minimum	9%	6%	-1%	-2%	1%	3%
Wholesale Electricity Price Index (WEPI)	N/A	N/A	-7%	-5%	-5%	-5%	N/A
	Maximum	335%	-31%	-35%	-98%	28%	359%
	Volume-Weighted Ave	66%	10%	-19%	-88%	68%	116%
Trading Price (\$/MWh)	Time-Weighted Ave	63%	11%	-18%	-87%	65%	109%
	Minimum	46%	4%	-25%	104%	23%	81%
	Temperature °C (Brisbane)	Maximum	1%	-2%	11%	7%	-2%
Minimum	20%	9%	2%	-5%	3%	-3%	-100%
For the Same Week Last Year							
Total Energy (MWh)	140,861	145,375	157,069	154,060	156,490	154,549	145,093
Trading Demand Target (MW)	Maximum	6,702	7,090	7,634	7,420	7,607	7,527
	Average	5,869	6,057	6,545	6,419	6,520	6,440
	Minimum	4,635	4,672	4,788	4,857	4,794	4,794
Regional Load Factor (%)	88%	85%	86%	87%	86%	86%	89%
Wholesale Electricity Price Index (WEPI)	N/A	49.43	50.98	50.39	51.84	52.00	N/A
	Maximum	30.39	65.60	95.28	9920.99	885.10	40.71
	Volume-Weighted Ave	22.99	28.10	46.12	489.92	63.50	30.85
Trading Price (\$/MWh)	Time-Weighted Ave	22.27	26.72	42.86	444.19	58.81	29.60
	Minimum	10.82	13.19	14.19	-308.24	17.57	12.16
	Temperature °C (Brisbane)	Maximum	30.7	31.0	27.6	28.1	29.5
Minimum	21.0	21.1	21.6	21.8	20.5	20.9	21.0

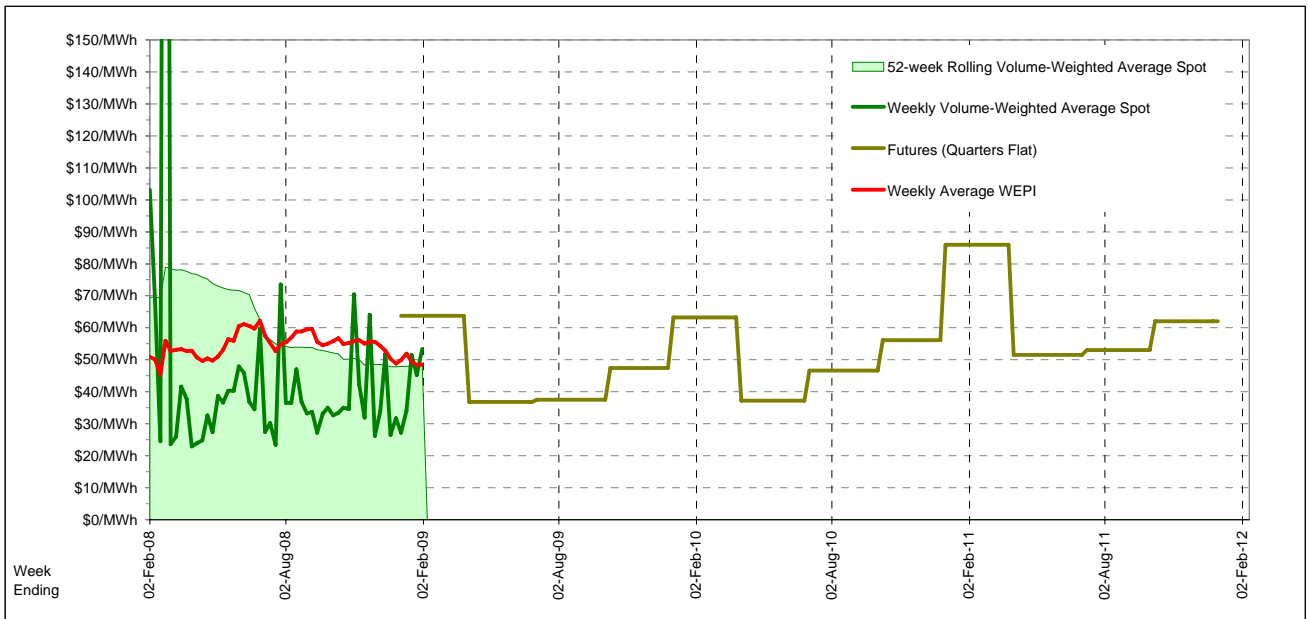
Long-Term Trends

This table contains electricity futures pricing, supplied by d-cyphatrade. All data other than flat and peak quarterly pricing is implied.

<i>Futures settlement prices</i> for flat load (all times)	CalYear	FinYear Ending	Q1	Q2	Q3	Q4	
	2009		63.70	36.85	37.50	47.40	
	2010	52.11	47.27	63.20	37.20	46.60	56.15
	2011	63.03	60.28	86.00	51.50	53.00	62.00
	2012						

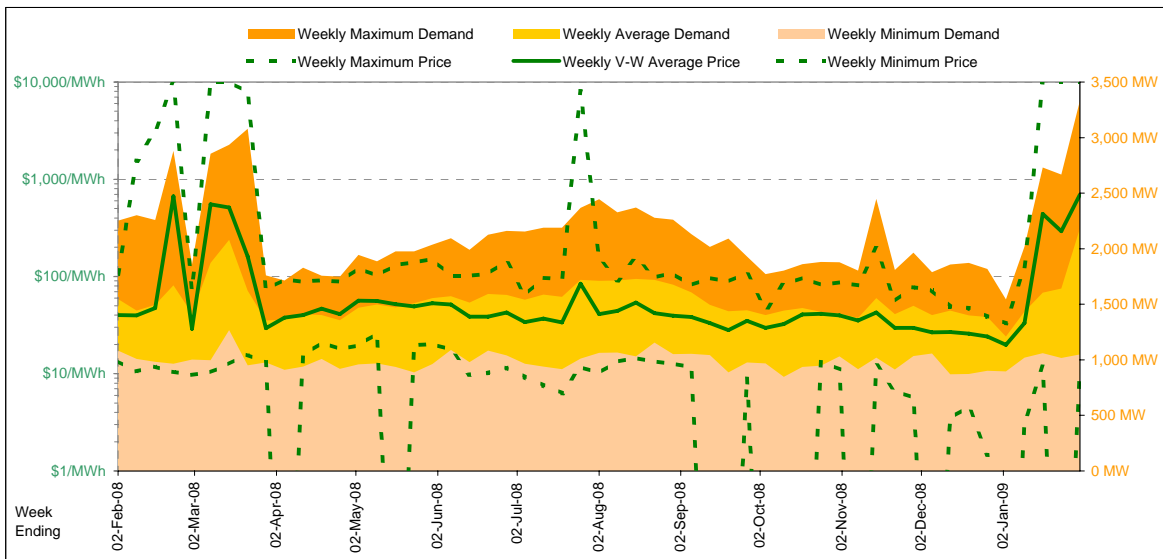
<i>Futures settlement prices</i> for peak load (7am-10pm M-F)	CalYear	FinYear Ending	Q1	Q2	Q3	Q4	
	2009		100.00	49.25	48.50	71.95	
	2010	73.26	70.28	112.00	49.00	56.00	76.00
	2011	86.14	82.80	140.00	60.00	60.00	85.00
	2012						

<i>Implied Prices</i> for Off-Peak Load (All other times)	CalYear	FinYear Ending	Q1	Q2	Q3	Q4	
	2009		34.43	26.85	28.63	27.60	
	2010	35.05	28.71	23.85	27.68	39.02	40.14
	2011	44.39	42.12	42.45	44.65	47.35	43.45
	2012						



Current Year

Energy (MWh)	Total	Week 5 Ending Saturday		52-Weeks Ending Sat		Date Occurred
		31-Jan-09	% change	2-Feb-08	31-Jan-09	
		366,473	41%	260,007	13,423,238	
Trading Demand (MW)	Maximum	3,331	48%	2,253	3,331	28-Jan-09
	Average	2,181	41%	1,548	1,537	
	Minimum	1,048	-3%	1,082	847	11-Oct-08
Regional Load Factor (%)		65%		69%	46%	
Trading Price (\$/MWh)	Maximum	9999.92	9,324%	106.11	9999.92	
	Volume-Weighted Ave	694.71	1,627%	40.22	110.90	
	Time-Weighted Ave	498.57	1,246%	37.03	75.78	
	Minimum	10.58	-21%	13.47	-1000.00	
Temperature °C (Adelaide)	Maximum	45.7	33%	34.3	45.7	
	Minimum	13.9	-9%	15.3	0.7	

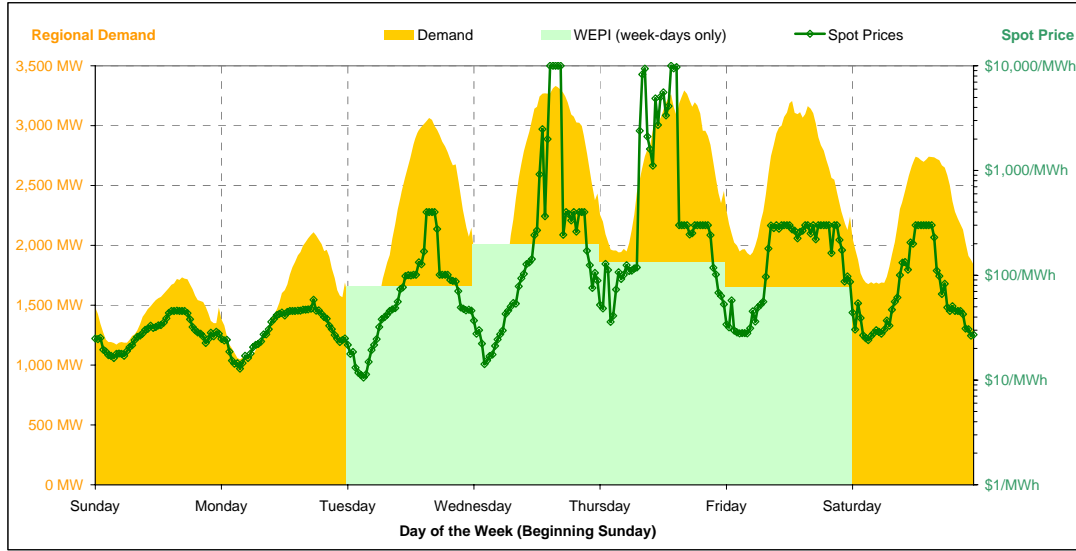


Note that prices below \$1/MWh have been reset to \$1/MWh for the purposes of this display

Current Week

All Data in this table is shown in MWh								
	Weekly Total	Sunday	Monday	Tuesday	Wednesday	Thursday	Friday	Saturday
Total Production by Generation Company								
AGL	101,706	5,150	7,012	15,066	16,608	21,109	23,368	13,395
International Power (Pelican Point)	62,860	4,699	8,842	10,396	10,265	10,668	10,246	7,745
International Power (Synergen)	7,423	0	0	286	1,888	2,407	1,930	914
Flinders Power	110,447	14,899	15,555	14,579	16,930	15,953	16,026	16,505
Origin Energy	16,797	1,056	1,320	2,741	2,771	2,800	3,491	2,619
Osborne	26,433	3,286	3,324	3,811	3,967	4,229	4,047	3,770
TRUenergy	6,977	0	0	1,314	1,393	1,728	1,494	1,048
Other SA Plants	8,306	675	1,121	879	1,532	1,610	1,449	1,042
Total internal production	340,947	29,765	37,174	49,070	55,353	60,502	62,050	47,035
(Load at Pumped Storage)	0	0	0	0	0	0	0	0
Net internal production	340,947	29,765	37,174	49,070	55,353	60,502	62,050	47,035
Percentage each company's production represents of the total internal production								
AGL	29.8%	17.3%	18.9%	30.7%	30.0%	34.9%	37.7%	28.5%
International Power (Pelican Point)	18.4%	15.8%	23.8%	21.2%	18.5%	17.6%	16.5%	16.5%
International Power (Synergen)	2.2%	0.0%	0.0%	0.6%	3.4%	4.0%	3.1%	1.9%
Flinders Power	32.4%	50.1%	41.8%	29.7%	30.6%	26.4%	25.8%	35.1%
Origin Energy	4.9%	3.5%	3.6%	5.6%	5.0%	4.6%	5.6%	5.6%
Osborne	7.8%	11.0%	8.9%	7.8%	7.2%	7.0%	6.5%	8.0%
TRUenergy	2.0%	0.0%	0.0%	2.7%	2.5%	2.9%	2.4%	2.2%
Other SA Plants	2.4%	2.3%	3.0%	1.8%	2.8%	2.7%	2.3%	2.2%
Total Percentage	100.0%	100.0%	100.0%	100.0%	100.0%	100.0%	100.0%	100.0%

Current Week (continued)



	Sunday	Monday	Tuesday	Wednesday	Thursday	Friday	Saturday
For the Current Week							
Total Energy (MWh)	34,672	37,225	53,746	61,726	64,394	61,727	52,984
Trading Demand Target (MW)	Maximum	1,732	2,109	3,064	3,331	3,293	2,741
	Average	1,445	1,551	2,239	2,572	2,683	2,208
	Minimum	1,172	1,048	1,273	1,522	1,940	1,677
Regional Load Factor (%)	83%	74%	73%	77%	81%	80%	81%
Wholesale Electricity Price Index (WEPI)	N/A	#N/A	79.23	195.89	132.21	76.87	N/A
	Maximum	45.93	58.29	400.81	9999.77	9999.92	300.00
	Volume-Weighted Ave	30.22	34.79	113.82	1620.71	1984.81	200.78
Trading Price (\$/MWh)	Time-Weighted Ave	29.16	32.34	93.35	1276.72	1777.67	183.09
	Minimum	16.18	12.84	10.58	14.19	36.01	27.94
	Maximum	30.4	36.6	43.2	45.7	43.4	41.1
Temperature °C (Adelaide)	Minimum	13.9	16.9	21.2	30.7	33.9	29.4
Percentage Change from Same Week Last Year							
Total Energy (MWh)	9%	12%	36%	48%	65%	60%	48%
Trading Demand Target (MW)	Maximum	14%	26%	46%	48%	61%	52%
	Average	9%	12%	36%	48%	65%	60%
	Minimum	4%	-4%	16%	34%	70%	77%
Wholesale Electricity Price Index (WEPI)	N/A	N/A	-1%	142%	70%	-1%	N/A
	Maximum	19%	-22%	329%	9,324%	14,262%	460%
	Volume-Weighted Ave	12%	7%	129%	2,908%	4,485%	436%
Trading Price (\$/MWh)	Time-Weighted Ave	10%	5%	105%	2,499%	4,249%	419%
	Minimum	20%	-18%	-39%	-28%	77%	107%
	Maximum	20%	28%	37%	36%	43%	34%
Temperature °C (Adelaide)	Minimum	-17%	10%	33%	56%	55%	67%
For the Same Week Last Year							
Total Energy (MWh)	31,929	33,295	39,534	41,683	39,137	38,601	35,829
Trading Demand Target (MW)	Maximum	1,524	1,675	2,104	2,253	2,047	2,109
	Average	1,330	1,387	1,647	1,737	1,631	1,608
	Minimum	1,122	1,089	1,102	1,132	1,144	1,082
Regional Load Factor (%)	87%	83%	78%	77%	80%	76%	78%
Wholesale Electricity Price Index (WEPI)	N/A	75.11	80.03	81.05	77.83	77.91	N/A
	Maximum	38.67	74.27	93.46	106.11	69.63	53.57
	Volume-Weighted Ave	27.06	32.39	49.81	53.89	43.29	37.47
Trading Price (\$/MWh)	Time-Weighted Ave	26.56	30.92	45.57	49.12	40.88	35.26
	Minimum	13.48	15.75	17.24	19.65	20.39	13.47
	Maximum	25.3	28.5	31.6	33.7	30.3	32.2
Temperature °C (Adelaide)	Minimum	16.7	15.3	15.9	19.7	21.9	19.1

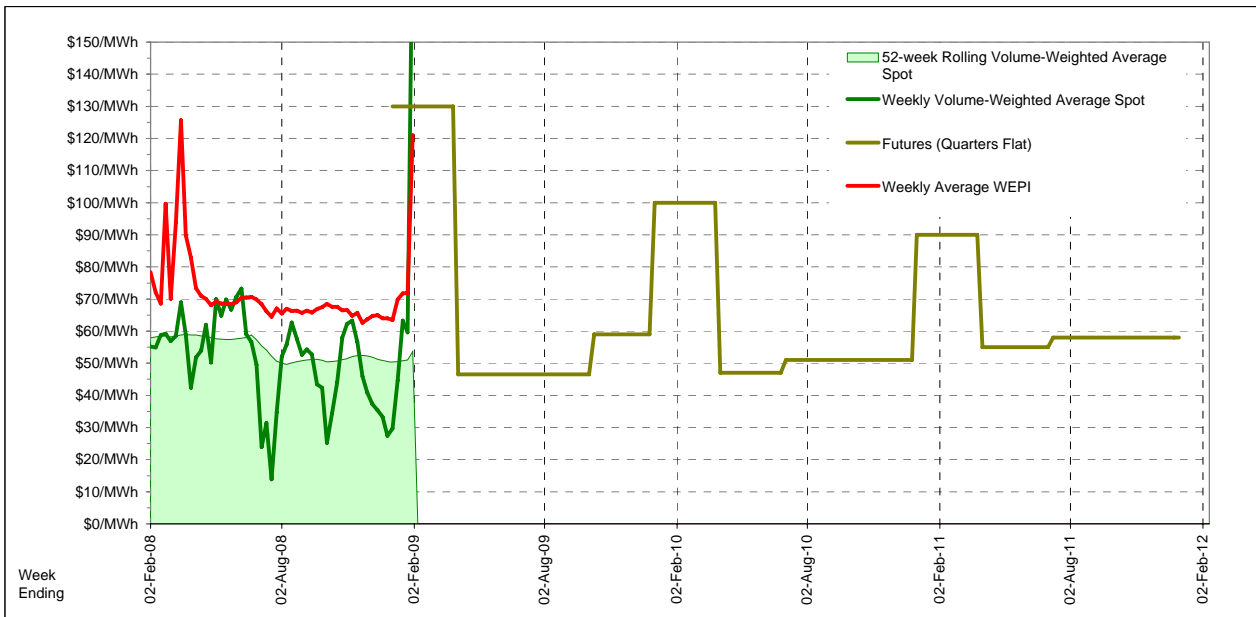
Long-Term Trends

This table contains electricity futures pricing, supplied by d-cyphatrade. All data other than flat and peak quarterly pricing is implied.

<i>Futures settlement prices</i> for flat load (all times)	CalYear	FinYear Ending	Q1	Q2	Q3	Q4
2009			130.00	46.50	46.50	59.00
2010	62.08	62.97	100.00	47.00	51.00	51.00
2011	65.14	61.61	90.00	55.00	58.00	58.00
2012						

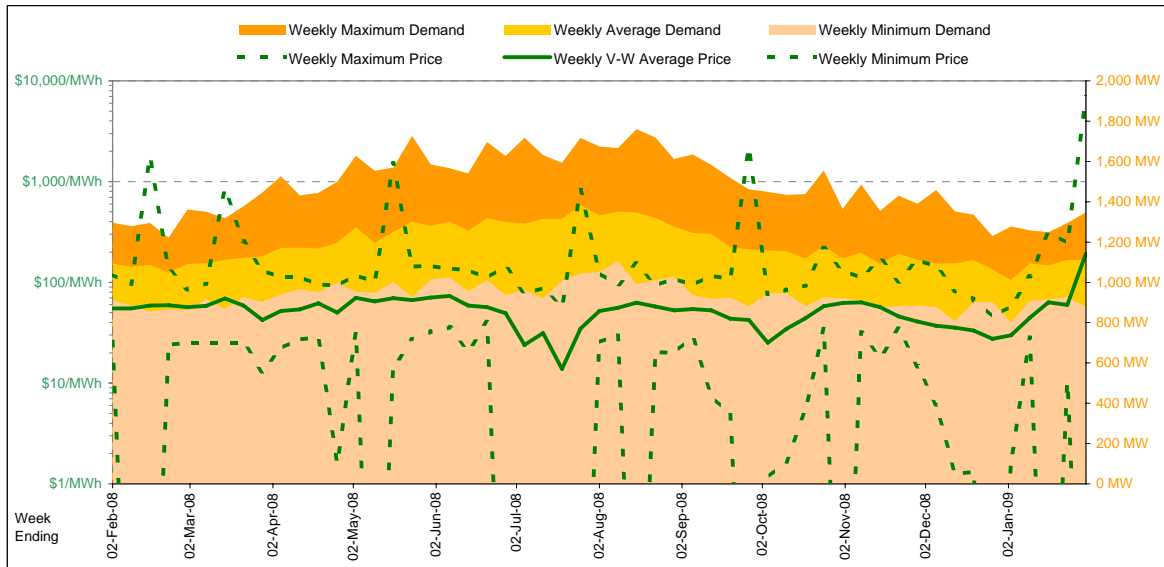
<i>Futures settlement prices</i> for peak load (7am-10pm M-F)	CalYear	FinYear Ending	Q1	Q2	Q3	Q4
2009			200.00	62.00	50.70	86.50
2010	78.02	75.30	102.00	63.00	73.00	74.00
2011	55.88	70.94	100.00	36.50	42.75	45.50
2012						

<i>Implied Prices</i> for Off-Peak Load (All other times)	CalYear	FinYear Ending	Q1	Q2	Q3	Q4
2009			73.55	34.00	43.11	36.82
2010	49.23	53.03	98.39	34.10	33.26	32.45
2011	72.61	54.09	81.94	69.92	70.30	68.08
2012						



Current Year

		Week 5 Ending Saturday		52-Weeks Ending Sat		
		31-Jan-09	% change	2-Feb-08	31-Jan-09	Date Occurred
Energy (MWh)	Total	186,796	2%	183,724	10,367,247	
	Maximum	1,347	4%	1,296	1,760	11-Aug-08
	Average	1,112	2%	1,094	1,187	
Trading Demand (MW)	Maximum	877	-4%	910	802	29-Dec-08
	Minimum	83%		84%	67%	
Regional Load Factor (%)	Maximum	6880.22	5,654%	119.57	6880.22	
	Volume-Weighted Ave	192.44	249%	55.20	53.55	
	Time-Weighted Ave	171.84	217%	54.16	52.37	
	Minimum	-999.76	-3,987%	25.72	-999.76	
Trading Price (\$/MWh)	Maximum	31.1	11%	28.0	37.3	
	Minimum	11.9	55%	7.7	0.3	

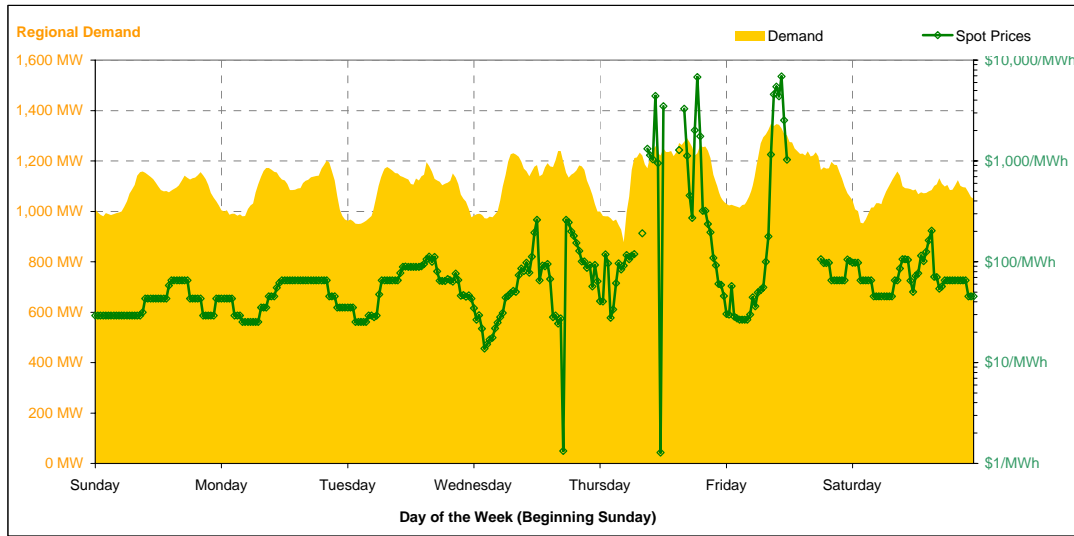


Note that prices below \$1/MWh have been reset to \$1/MWh for the purposes of this display

Current Week

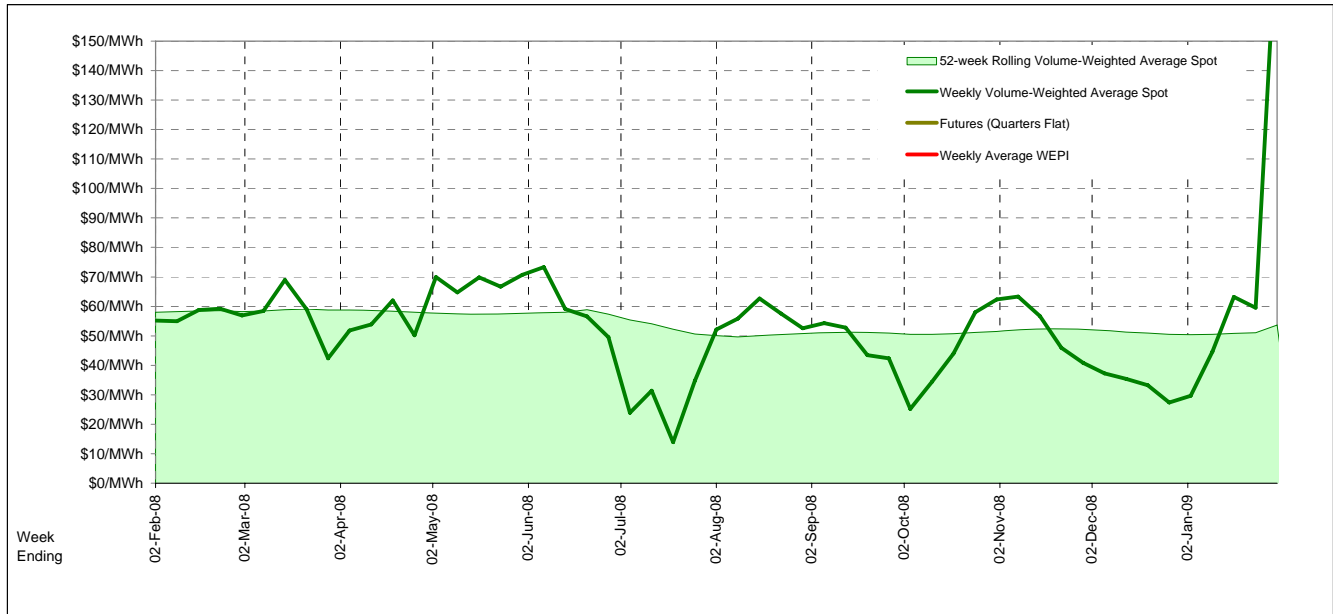
All Data in this table is shown in MWh								
Weekly Total	Sunday	Monday	Tuesday	Wednesday	Thursday	Friday	Saturday	
Total Production by Generation Company								
Hydro Tasmania	131,422	12,804	12,871	15,277	24,302	27,060	23,749	15,361
Bell Bay Power	20,056	2,856	2,856	2,856	2,856	2,868	2,908	2,856
Other TAS Plants	0	0	0	0	0	0	0	0
Total internal production	151,478	15,660	15,727	18,133	27,158	29,927	26,657	18,217
(Load at Pumped Storage)	0	0	0	0	0	0	0	0
Net internal production	151,478	15,660	15,727	18,133	27,158	29,927	26,657	18,217
Percentage each company's production represents of the total internal production								
Hydro Tasmania	86.8%	81.8%	81.8%	84.2%	89.5%	90.4%	89.1%	84.3%
Bell Bay Power	13.2%	18.2%	18.2%	15.8%	10.5%	9.6%	10.9%	15.7%
Other TAS Plants	0.0%	0.0%	0.0%	0.0%	0.0%	0.0%	0.0%	0.0%
Total Percentage	100.0%	100.0%	100.0%	100.0%	100.0%	100.0%	100.0%	100.0%

Current Week (continued)



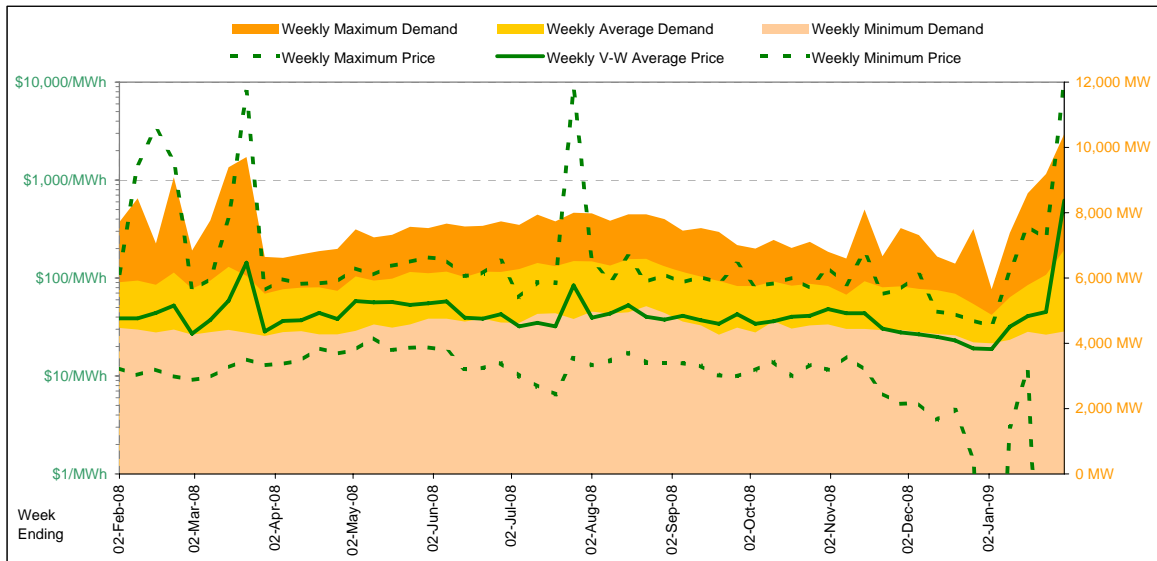
	Sunday	Monday	Tuesday	Wednesday	Thursday	Friday	Saturday
For the Current Week							
Total Energy (MWh)	25,906	26,085	26,048	26,935	27,687	28,437	25,700
Trading Demand Target (MW)	Maximum	1,158	1,201	1,195	1,240	1,290	1,347
	Average	1,079	1,087	1,085	1,122	1,154	1,185
	Minimum	980	967	950	972	877	1,015
Regional Load Factor (%)	Maximum	65.30	65.28	112.03	260.26	6778.32	6880.22
	Average	40.14	48.33	64.22	80.64	550.65	445.75
Trading Price (\$/MWh)	Volume-Weighted Ave	39.85	47.75	62.72	78.97	513.53	386.94
	Time-Weighted Ave	29.28	25.28	25.28	1.33	-999.72	-999.76
	Minimum	27.4	22.3	28.9	23.7	28.2	31.1
Temperature °C (Hobart)	Maximum	11.9	14.5	14.4	14.6	17.0	21.8
	Minimum						
Percentage Change from Same Week Last Year							
Total Energy (MWh)	7%	2%	-5%	-2%	6%	6%	-2%
Trading Demand Target (MW)	Maximum	7%	3%	-4%	0%	8%	4%
	Average	7%	2%	-5%	-2%	6%	6%
	Minimum	7%	6%	-1%	-6%	-12%	3%
Trading Price (\$/MWh)	Maximum	-38%	-16%	15%	118%	8,429%	9,042%
	Volume-Weighted Ave	8%	15%	2%	23%	823%	677%
	Time-Weighted Ave	7%	16%	2%	21%	764%	582%
Temperature °C (Hobart)	Maximum	4%	-10%	-4%	-95%	-3,913%	-3,916%
	Minimum	0%	-19%	41%	14%	45%	37%
For the Same Week Last Year							
Total Energy (MWh)	24,125	25,597	27,433	27,531	26,166	26,723	26,151
Trading Demand Target (MW)	Maximum	1,078	1,162	1,245	1,240	1,194	1,296
	Average	1,005	1,067	1,143	1,147	1,090	1,113
	Minimum	915	910	964	1,034	1,002	990
Regional Load Factor (%)	Maximum	93%	92%	92%	93%	91%	86%
	Average	104.87	77.79	97.15	119.57	79.47	75.26
Trading Price (\$/MWh)	Volume-Weighted Ave	37.31	41.89	62.94	65.77	59.67	57.35
	Time-Weighted Ave	37.23	41.33	61.24	65.00	59.45	56.76
	Minimum	28.15	28.18	26.22	26.22	26.22	26.20
Temperature °C (Hobart)	Maximum	27.3	27.6	20.5	20.8	19.4	22.7
	Minimum	16.8	12.9	14.9	12.1	13.6	7.7

Long-Term Trends



Current Year

		Week 5 Ending Saturday			52-Weeks Ending Sat	
		31-Jan-09	% change	2-Feb-08	31-Jan-09	Date Occurred
Energy (MWh)	Total	1,152,257	17%	986,639	52,044,677	
Trading Demand (MW)	Maximum	10,415	35%	7,716	10,415	29-Jan-09
	Average	6,859	17%	5,873	5,957	
	Minimum	4,359	-3%	4,471	4,004	28-Dec-08
Regional Load Factor (%)		66%		76%	57%	
Trading Price (\$/MWh)	Maximum	10000.00	8,809%	112.25	10000.00	
	Volume-Weighted Ave	619.65	1,500%	38.72	55.76	
	Time-Weighted Ave	439.92	1,110%	36.35	47.54	
	Minimum	-106.15	-984%	12.01	-164.22	
Temperature °C (Melbourne)	Maximum	45.1	60%	28.1	45.1	
	Minimum	13.0	-6%	13.9	2.2	

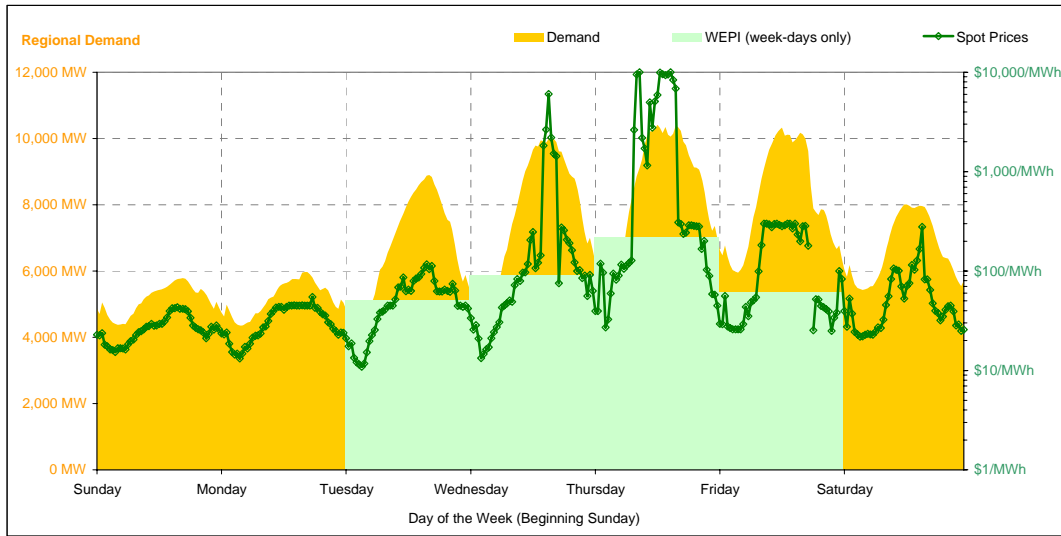


Note that prices below \$1/MWh have been reset to \$1/MWh for the purposes of this display

Current Week

All Data in this table is shown in MWh								
	Weekly Total	Sunday	Monday	Tuesday	Wednesday	Thursday	Friday	Saturday
Total Production by Generation Company								
AGL	20,871	616	598	2,085	4,121	6,247	4,720	2,485
Anglesea	25,890	3,789	3,840	3,840	3,776	2,968	3,837	3,840
Babcock & Brown Power	5,735	266	309	950	972	1,029	955	1,256
Ecogen Energy	64,110	0	417	10,497	14,223	15,890	13,713	9,371
Energy Brix	26,018	3,780	3,783	3,769	3,752	3,746	3,616	3,574
International Power (Hazelwood)	244,356	32,614	37,511	36,534	34,282	35,705	35,737	31,974
Loy Yang B	137,281	21,897	15,512	18,749	19,973	19,764	21,644	19,744
Loy Yang Power	290,852	39,862	30,592	37,820	40,423	43,869	48,450	49,836
Snowy Hydro	94,757	0	1,727	16,527	23,816	26,954	16,904	8,830
TRUenergy	234,442	34,807	34,781	34,414	33,312	31,793	31,760	33,577
Other VIC Plants	2,773	384	398	408	408	388	383	404
Total internal production	1,147,082	138,014	129,465	165,592	179,056	188,353	181,716	164,888
(Load at Pumped Storage)	0	0	0	0	0	0	0	0
Net internal production	1,147,082	138,014	129,465	165,592	179,056	188,353	181,716	164,888
Percentage each company's production represents of the total internal production								
AGL	1.8%	0.4%	0.5%	1.3%	2.3%	3.3%	2.6%	1.5%
Anglesea	2.3%	2.7%	3.0%	2.3%	2.1%	1.6%	2.1%	2.3%
Babcock & Brown Power	0.5%	0.2%	0.2%	0.6%	0.5%	0.5%	0.5%	0.8%
Ecogen Energy	5.6%	0.0%	0.3%	6.3%	7.9%	8.4%	7.5%	5.7%
Energy Brix	2.3%	2.7%	2.9%	2.3%	2.1%	2.0%	2.0%	2.2%
International Power (Hazelwood)	21.3%	23.6%	29.0%	22.1%	19.1%	19.0%	19.7%	19.4%
Loy Yang B	12.0%	15.9%	12.0%	11.3%	11.2%	10.5%	11.9%	12.0%
Loy Yang Power	25.4%	28.9%	23.6%	22.8%	22.6%	23.3%	26.7%	30.2%
Snowy Hydro	8.3%	0.0%	1.3%	10.0%	13.3%	14.3%	9.3%	5.4%
TRUenergy	20.4%	25.2%	26.9%	20.8%	18.6%	16.9%	17.5%	20.4%
Other VIC Plants	0.2%	0.3%	0.3%	0.2%	0.2%	0.2%	0.2%	0.2%
Total Percentage	100.0%	100.0%	100.0%	100.0%	100.0%	100.0%	100.0%	100.0%

Current Week (continued)



	Sunday	Monday	Tuesday	Wednesday	Thursday	Friday	Saturday
For the Current Week							
Total Energy (MWh)	123,100	124,097	162,564	185,801	202,388	195,470	158,838
Trading Demand Target (MW)	Maximum	5,786	5,973	8,898	9,989	10,415	8,007
	Average	5,129	5,171	6,773	7,742	8,433	8,145
	Minimum	4,380	4,359	4,557	4,909	5,620	5,426
Regional Load Factor (%)	89%	87%	76%	78%	81%	79%	83%
Wholesale Electricity Price Index (WEPI)	N/A	#N/A	51.32	90.92	216.59	61.63	N/A
	Maximum	43.18	54.96	116.55	6035.89	10000.00	300.00
	Minimum	27.46	32.71	58.90	505.45	2786.26	150.25
Trading Price (\$/MWh)	Volume-Weighted Ave	26.84	31.65	53.12	404.53	2376.06	130.49
	Time-Weighted Ave	15.32	13.18	10.86	13.31	27.03	-106.15
	Minimum	27.1	25.5	36.4	43.4	44.3	45.1
Temperature °C (Melbourne)	Maximum	13.0	14.4	16.6	18.8	25.7	22.5
	Minimum						
Percentage Change from Same Week Last Year							
Total Energy (MWh)	-6%	-4%	9%	21%	40%	36%	18%
Trading Demand Target (MW)	Maximum	-6%	-5%	18%	29%	53%	26%
	Average	-6%	-4%	9%	21%	40%	18%
	Minimum	-6%	-3%	-2%	1%	14%	18%
Wholesale Electricity Price Index (WEPI)	N/A	N/A	2%	80%	342%	25%	N/A
Trading Price (\$/MWh)	Maximum	17%	-23%	24%	5,277%	13,357%	508%
	Volume-Weighted Ave	7%	9%	19%	852%	6,315%	330%
	Time-Weighted Ave	8%	10%	15%	718%	5,584%	286%
Temperature °C (Melbourne)	Maximum	28%	-7%	-31%	-31%	39%	-904%
	Minimum	0%	-9%	39%	66%	107%	83%
	Minimum	-35%	-13%	-2%	5%	45%	85%
For the Same Week Last Year							
Total Energy (MWh)	131,206	129,125	149,438	153,539	145,041	143,322	134,970
Trading Demand Target (MW)	Maximum	6,153	6,295	7,571	7,716	6,798	6,784
	Average	5,467	5,380	6,227	6,397	6,043	5,972
	Minimum	4,660	4,471	4,654	4,872	4,930	4,747
Regional Load Factor (%)	89%	85%	82%	83%	89%	88%	88%
Wholesale Electricity Price Index (WEPI)	N/A	46.96	50.13	50.60	49.04	49.16	N/A
	Maximum	37.03	71.74	94.28	112.25	74.31	49.33
	Minimum	25.55	29.97	49.51	53.08	43.43	34.98
Trading Price (\$/MWh)	Volume-Weighted Ave	24.92	28.85	46.03	49.48	41.80	33.78
	Time-Weighted Ave	12.01	14.23	15.69	19.22	19.51	13.21
	Minimum	27.0	28.1	26.2	26.2	21.4	24.7
Temperature °C (Melbourne)	Maximum	20.0	16.5	16.9	17.9	17.7	13.9
	Minimum						

Long-Term Trends

This table contains electricity futures pricing, supplied by d-cyphatrade. All data other than flat and peak quarterly pricing is implied.

		CalYear	FinYear Ending	Q1	Q2	Q3	Q4
Actual Prices for Flat Load (All Times)	2009			75.00	44.25	45.00	43.50
	2010	57.55	52.21	75.00	45.75	54.85	54.85
	2011	67.99	64.80	94.45	55.60	60.65	61.70
	2012						
Actual Prices for Peak Load (7am-10pm M-F)	2009			140.00	61.20	61.20	60.25
	2010	73.72	72.57	115.00	55.45	62.00	64.00
	2011	77.57	78.40	139.20	50.20	57.20	65.55
	2012						
Implied Prices for Off-Peak Load (All other times)	2009			22.58	30.58	31.94	29.99
	2010	44.51	35.79	42.74	37.93	49.08	47.47
	2011	60.26	53.83	58.36	59.95	63.43	58.60
	2012						

