

Energy Minister introduces AEMA amendment

A bill to amend the Australian Energy Market Agreement has been introduced into Parliament by Federal Energy Minister Martin Ferguson.

"The bill I am introducing today, although only making minor amendments to Commonwealth legislation, reflects another significant reform of the energy sector overseen by the Ministerial Council on Energy – the proposed commencement of a single national energy market operator for both the electricity and gas sectors," says Ferguson.

Upon its establishment, the Australian Energy Market Operator will assume the responsibilities and functions of existing gas and electricity market operators, including the National Electricity Market Management Company.

AEMO will also adopt a number of new functions such as the proposed National Transmission Planner function for electricity.

The bill provides for minor amendments to be made to Commonwealth legislation as a consequence of AEMO's assumption of NEMMCO functions.

The broader functions, power and duties of AEMO will be primarily set out in legislation to be introduced into the South Australian Parliament, as lead legislator for the national energy market.

These amendments are expected to be put to the South Australian Parliament in the first half of this year to facilitate the commencement of AEMO's operations by 1 July 2009.

Other jurisdictions, apart from Western Australia and the Northern Territory, will also amend their legislation to effect the change, according to Ferguson.

Parliamentary committee to examine ETS policy

The House of Representatives Economics Committee will examine the choice of emissions trading as the central policy to reduce Australia's carbon emissions.

"We need to take urgent action to help slow down the effects of climate change. We need to examine sustainable economic options to reduce our carbon footprint effectively and in a timely manner," says Committee Chair Craig Thomson.

The committee's inquiry will focus on how Australia can make the transition to a lower carbon economy both efficiently and economically.

The committee will inquire into the choice of emissions trading as the central policy to reduce Australia's carbon emissions, taking into account the need to reduce carbon emissions at the lowest economic cost, put in place long-term incentives for investment in clean energy and low-emission technology and contribute to a global solution to climate change, according to the terms of reference for the inquiry referred by Federal Treasurer Wayne Swan.

This week's volume-weighted electricity price (\$/MWh)

NSW:	\$78.39
Vic:	\$67.79
Qld:	\$42.04
SA:	\$82.14
Tas:	\$37.52

Calendar of Events

12 March 2009

A course in **emissions trading** presented by Macquarie University Applied Finance Centre will be held in Sydney on the 12 March, 13 August and 28 October, and in Melbourne on 4 June. This course, designed for finance professionals, is designed to bring participants up to speed with the emerging domestic and global carbon markets. An emissions trading simulation will be run during the course; that is, lecture material will be interspersed with simulation activities. It is designed to illustrate the decision-making processes required in a carbon-constrained world, exploring such issues such as the setting of targets, permit allocation, carbon price discovery, permit 'vintages', and monetising abatement projects. This will be a group exercise where each group role plays a critical part of the economy.

A 10 per cent discount on the registration fee is available for members of esaa. Visit http://www.mafc.mq.edu.au/short_courses.htm for more information about the course.

24 March 2009

AEA Energy State of The Nation Forum '2030 Vision for the Energy White Paper' will be held on 24 March 2009 at KPMG Auditorium, Sydney. At this annual forum hosted by the Australian Energy Alliance, leaders of Australia's energy organisations and key representatives of the energy industry present a critical insight into the state of the Australian energy industry and its future outlook. The 2009 Forum has been broadened to include a presentation and break-out sessions on the Discussion Papers that have been prepared by the Department of Resources Energy and Tourism as part of the Energy White Paper process, providing a valuable opportunity for industry to contribute.

For more information, contact The Meetings Manager at meetings@tmm.com.au, call 02 9810 7322 or visit www.tmm.com.au.

5 and 6 May 2009

The tenth annual **TechCon Asia-Pacific** will be held on Tuesday 5 and Wednesday 6 May 2009 at the Sydney Convention and Exhibition Centre. TechCon Asia Pacific is a forum for the discussion of technology development and solutions which provide improvement in key high voltage asset management strategies. A technical exhibition will display the products and services of leading providers in the Asia-Pacific region.

For further information, please contact the event co-ordinator by telephoning 03 8544 2301, by emailing fareesha.wijesinghe@wtc.com.au or visiting the event website at www.tjh2b.com.

Jobs on Offer

List industry jobs

esaa Full Members are invited to submit industry-related employment opportunities. This is a complimentary service. Email notices to newseditor@esaa.com.au by close of business Thursday.

Telecommunications Planning Engineer

ElectraNet is seeking applicants for a **Telecommunications Planning Engineer** role accountable to the Telecommunications Team Leader and responsible for the overall planning of the company's telecommunications network.

Key responsibilities of the position include providing support for the development and review of telecommunication network strategies, developing and maintaining the overall network development plan whilst maintaining consistent network architecture based on the strategy ratified by the EMT and providing concept designs and phase 1 & 2 scope and estimates for projects.

The successful candidate will be able to demonstrate a sound knowledge in the discipline area as well as a solid understanding of relevant standards and NEC technical code requirements.

A Degree in Electrical/Electronic Engineer (telecommunications option preferred) is required. To request a copy of the JD please email hr@electranet.com.au. Applications close 5 pm Friday 13 February 2009.

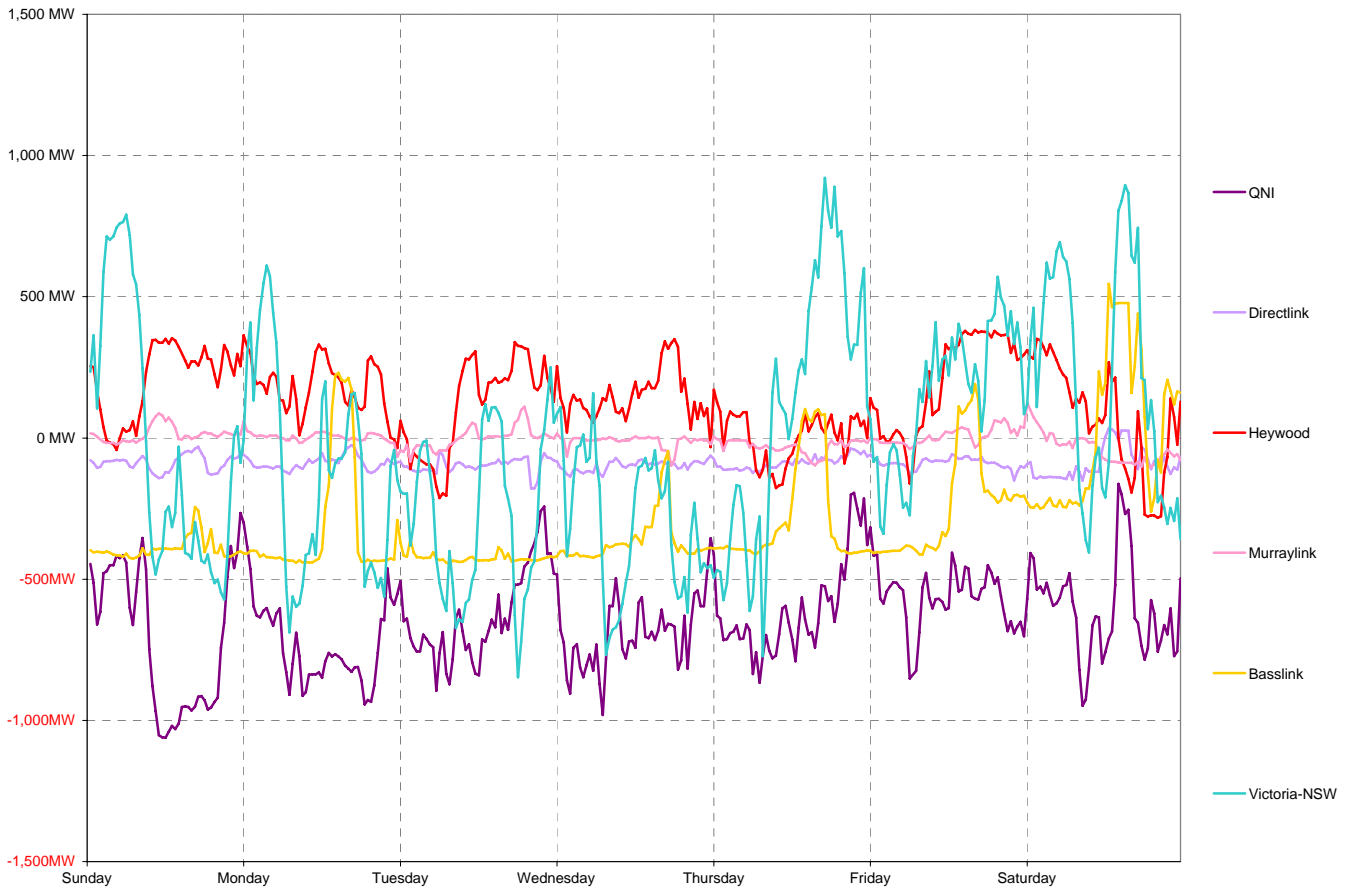
National Electricity Market Report

Week 6 Ending Saturday 07-Feb-09

Daily Inter-Regional Energy Flow

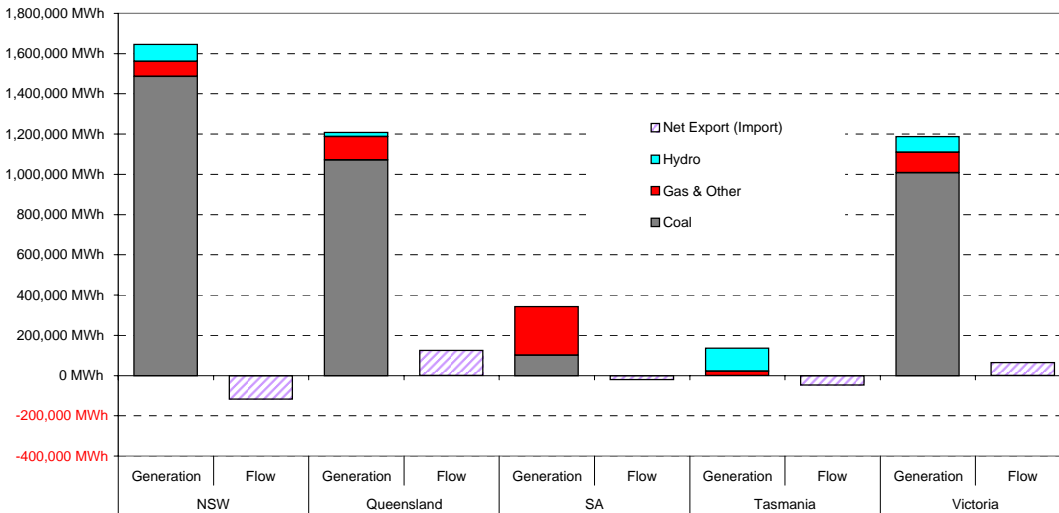
	Daily Net Exports (or Imports)							Weekly Total
	Sunday	Monday	Tuesday	Wednesday	Thursday	Friday	Saturday	
For the Current Week								
NSW	-18,740	-17,029	-10,968	-11,593	-19,491	-19,812	-21,368	-118,999
Queensland	18,955	19,739	17,478	18,968	16,631	15,878	16,563	124,210
South Australia	-5,411	-4,235	-2,859	-3,274	632	-5,132	-591	-20,869
Tasmania	-9,382	-7,582	-10,203	-8,719	-6,848	-5,870	385	-48,218
Victoria	14,578	9,107	6,552	4,618	9,077	14,935	5,011	63,876
MWh Change from Same Week Last Year								
NSW	-183	-4,701	-2,758	1,683	-12,059	-12,786	-6,223	-37,026
Queensland	1,823	4,359	11,590	5,904	13,105	10,691	2,469	49,938
South Australia	-5,066	-2,163	-6,216	-6,130	123	-4,973	-1,806	-26,230
Tasmania	815	-2,222	-1,419	587	2,599	4,256	10,305	14,920
Victoria	-4,838	15,125	6,954	6,090	2,147	7,418	-9,683	23,212
For the Same Week Last Year								
NSW	-18,557	-12,328	-8,210	-13,276	-7,432	-7,026	-15,145	-81,973
Queensland	17,133	15,380	5,888	13,065	3,526	5,187	14,094	74,272
South Australia	-345	-2,072	3,357	2,856	509	-159	1,215	5,361
Tasmania	-10,197	-5,360	-8,784	-9,306	-9,447	-10,125	-9,920	-63,138
Victoria	19,415	-6,018	-402	-1,473	6,930	7,518	14,694	40,664

Interconnector energy flow throughout the week

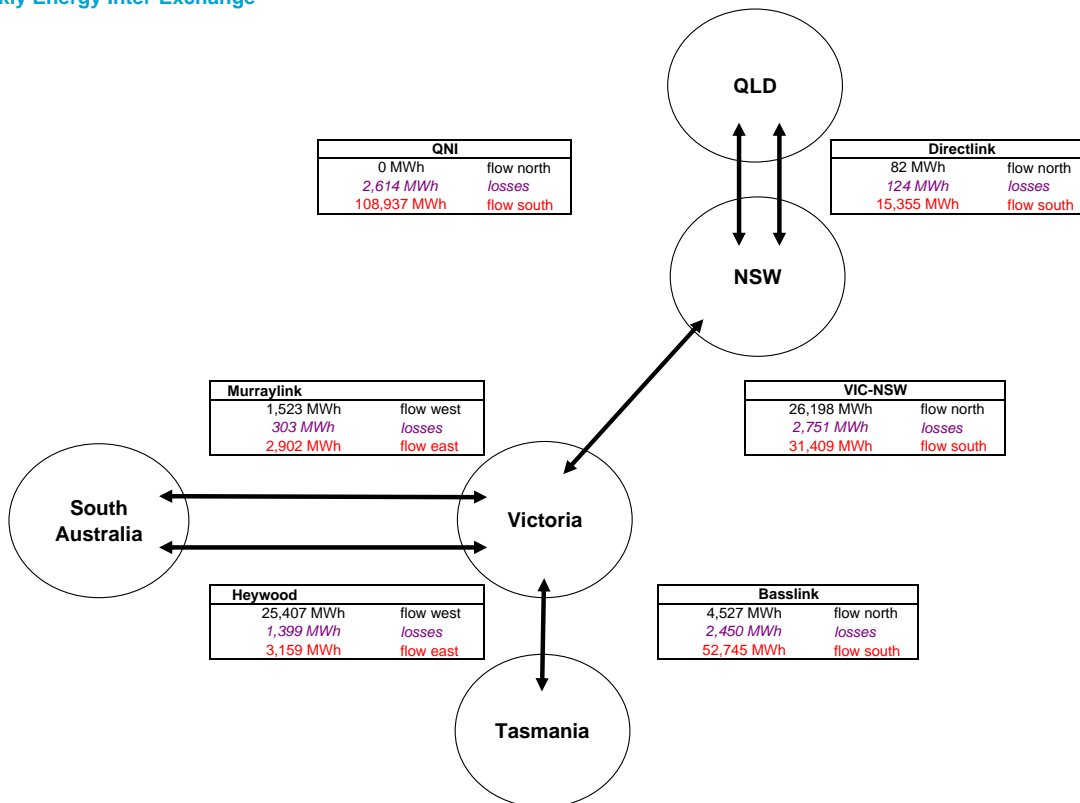


Generation by Fuel Type

	All data in this table is shown in MWh for the week											
	NSW		Queensland		SA		Tasmania		Victoria		Whole of NEM	
	Generation	Flow	Generation	Flow	Generation	Flow	Generation	Flow	Generation	Flow	Generation	Flow
Coal	1,487,119		1,071,388		101,826		0		1,008,199		3,668,531	
Gas & Other	74,920		115,773		240,665		20,870		101,133		553,360	
Hydro	84,179		21,358		0		114,756		79,020		299,313	
Pump Storage	-27,550		-1,586		0		0		0		-29,136	
Total Generation	1,618,668		1,206,932		342,491		135,626		1,188,352		4,492,068	
Total Exports		31,491		124,292		6,061		4,527		105,872		
Total Imports		150,490		82		26,929		52,745		41,996		
Net Export (Import)		-118,999		124,210		-20,869		-48,218		63,876		
Net Consumption	1,737,667		1,082,723		363,359		183,844		1,124,476			

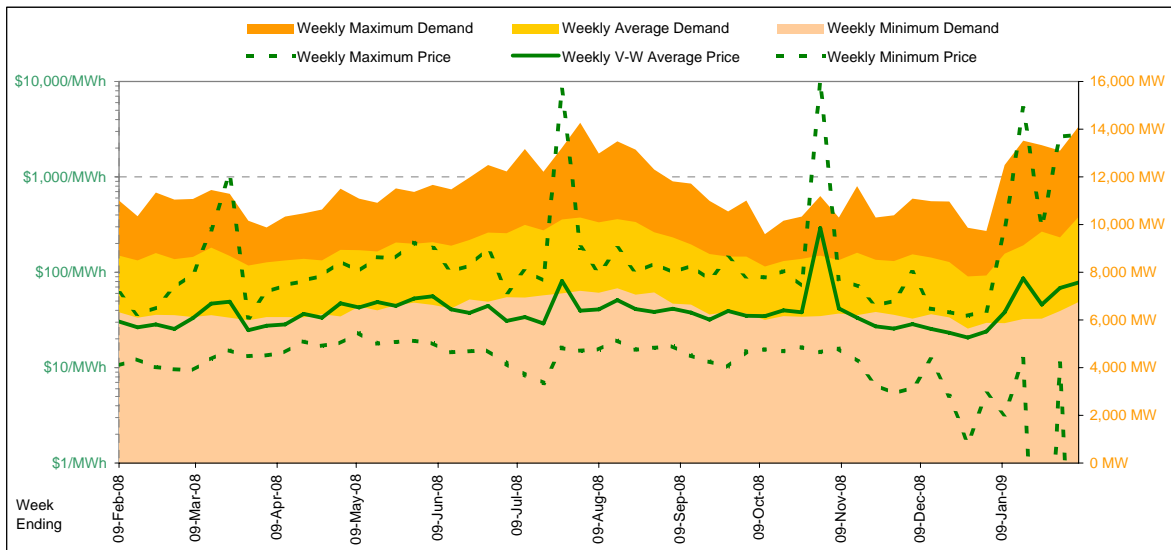


Weekly Energy Inter-Exchange



Current Year

		Week 6 Ending Saturday		52-weeks ending Sat		Date Occurred
		7-Feb-09	% change	9-Feb-08	7-Feb-09	
Energy (MWh)	Total	1,734,426	19%	1,460,746	78,784,727	
	Maximum	14,106	28%	11,010	14,274	28-Aug-08
	Average	10,324	19%	8,695	9,018	
Trading Demand (MW)	Maximum	6,753	7%	6,321	5,632	26-Dec-08
	Minimum					
Regional Load Factor (%)		73%		79%	63%	
Trading Price (\$/MWh)	Maximum	2772.67	4,509%	60.16	10000.00	
	Volume-Weighted Ave	78.39	158%	30.42	44.94	
	Time-Weighted Ave	68.64	134%	29.38	41.05	
	Minimum	-106.15	-1,104%	10.57	-170.76	
Temperature °C (Sydney)	Maximum	33.5	23%	27.2	40.9	
	Minimum	21.2	29%	16.4	5.3	

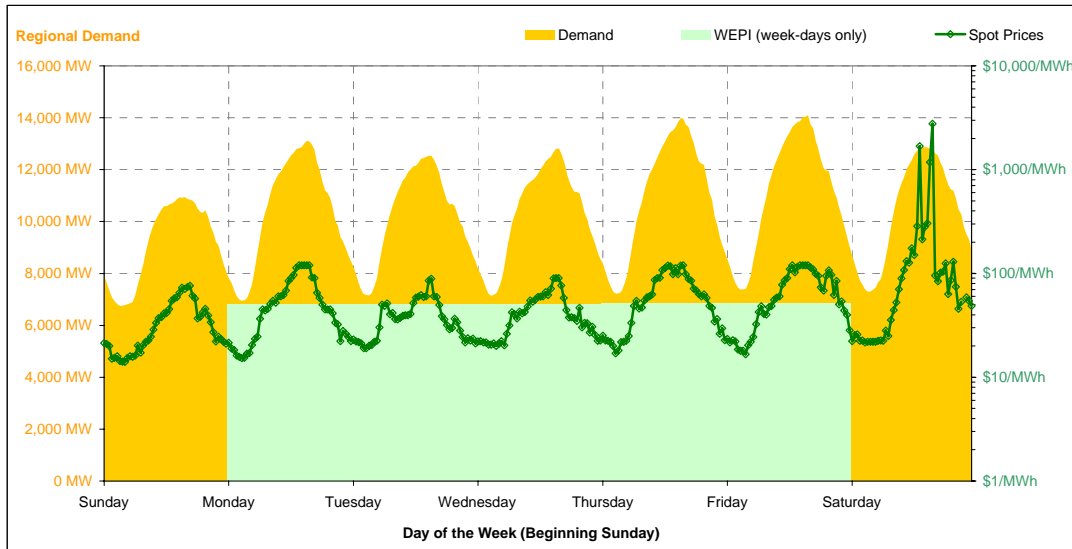


Note that prices below \$1/MWh have been reset to \$1/MWh for the purposes of this display

Current Week

All Data in this table is shown in MWh								
	Weekly Total	Sunday	Monday	Tuesday	Wednesday	Thursday	Friday	Saturday
Total Production by Generation Company								
Babcock & Brown Power	23,243	3,469	3,462	3,308	2,626	3,424	3,479	3,477
Delta Electricity	548,098	73,690	78,345	80,797	82,297	83,689	79,953	69,328
Eraring Energy	286,004	39,000	42,291	41,916	42,619	42,847	39,204	38,129
Macquarie Generation	632,690	82,123	89,551	92,929	90,459	89,181	93,694	94,755
Marubeni	19,913	1,920	3,242	3,233	3,230	3,196	3,175	1,919
Snowy Hydro (NSW)	81,298	3,188	11,692	9,493	9,484	16,988	16,158	14,296
TRUenergy	38,294	3,925	6,845	5,761	7,127	2,681	7,567	4,390
Origin Energy	16,679	0	2,413	1,631	2,255	3,252	3,246	3,885
Other NSW Plants	0	0	0	0	0	0	0	0
Total internal production	1,646,217	207,313	237,838	239,067	240,095	245,255	246,473	230,176
(Load at Pumped Storage)	-27,550	-6,052	-5,574	-5,010	-4,236	-2,596	-741	-3,342
Net internal production	1,618,668	201,262	232,264	234,057	235,859	242,660	245,732	226,835
Percentage each company's production represents of the total internal production								
Babcock & Brown Power	1.4%	1.7%	1.5%	1.4%	1.1%	1.4%	1.4%	1.5%
Delta Electricity	33.3%	35.5%	32.9%	33.8%	34.3%	34.1%	32.4%	30.1%
Eraring Energy	17.4%	18.8%	17.8%	17.5%	17.8%	17.5%	15.9%	16.6%
Macquarie Generation	38.4%	39.6%	37.7%	38.9%	37.7%	36.4%	38.0%	41.2%
Marubeni	1.2%	0.9%	1.4%	1.4%	1.3%	1.3%	1.3%	0.8%
Snowy Hydro (NSW)	4.9%	1.5%	4.9%	4.0%	4.0%	6.9%	6.6%	6.2%
TRUenergy	2.3%	1.9%	2.9%	2.4%	3.0%	1.1%	3.1%	1.9%
Origin Energy	1.0%	0.0%	1.0%	0.7%	0.9%	1.3%	1.3%	1.7%
Other NSW Plants	0.0%	0.0%	0.0%	0.0%	0.0%	0.0%	0.0%	0.0%
Total Percentage	100.0%	100.0%	100.0%	100.0%	100.0%	100.0%	100.0%	100.0%

Current Week (continued)



	Sunday	Monday	Tuesday	Wednesday	Thursday	Friday	Saturday
For the Current Week							
Total Energy (MWh)	219,382	248,757	244,461	246,817	261,776	265,409	247,825
Trading Demand Target (MW)	Maximum	10,939	13,109	12,538	12,820	13,983	14,106
	Average	9,141	10,365	10,186	10,284	10,907	11,059
	Minimum	6,753	6,940	7,152	7,148	7,231	7,376
Regional Load Factor (%)	84%	79%	81%	80%	78%	78%	80%
Wholesale Electricity Price Index (WEPI)	N/A	50.81	50.23	50.15	51.94	51.73	N/A
	Maximum	76.14	119.97	88.87	89.98	119.97	120.25
	Volume-Weighted Ave	36.65	58.23	40.61	44.67	66.28	71.40
Trading Price (\$/MWh)	Time-Weighted Ave	33.99	52.25	38.28	41.62	59.93	64.70
	Minimum	14.02	15.29	19.00	20.07	17.00	16.61
	Maximum	28.1	28.3	28.0	27.3	29.2	29.5
Temperature °C (Sydney)	Maximum	21.2	22.9	21.8	21.6	22.2	21.9
	Minimum						
Percentage Change from Same Week Last Year							
Total Energy (MWh)	13%	14%	11%	12%	22%	29%	31%
Trading Demand Target (MW)	Maximum	20%	25%	18%	16%	35%	44%
	Average	13%	14%	11%	12%	22%	29%
	Minimum	6%	7%	7%	9%	11%	13%
Wholesale Electricity Price Index (WEPI)	N/A	3%	2%	5%	10%	13%	N/A
Trading Price (\$/MWh)	Maximum	117%	131%	48%	86%	224%	193%
	Volume-Weighted Ave	43%	81%	13%	34%	128%	143%
	Time-Weighted Ave	36%	68%	11%	29%	113%	125%
Temperature °C (Sydney)	Minimum	4%	31%	-4%	1%	61%	0%
	Maximum	15%	24%	9%	0%	11%	32%
	Minimum	-2%	13%	11%	7%	19%	27%
For the Same Week Last Year							
Total Energy (MWh)	194,700	217,558	219,394	220,148	213,925	206,119	188,904
Trading Demand Target (MW)	Maximum	9,126	10,466	10,597	11,010	10,351	9,802
	Average	8,112	9,065	9,141	9,173	8,914	8,588
	Minimum	6,383	6,492	6,657	6,530	6,536	6,500
Regional Load Factor (%)	89%	87%	86%	83%	86%	88%	87%
Wholesale Electricity Price Index (WEPI)	N/A	49.41	49.10	47.82	47.10	45.65	N/A
	Maximum	35.01	51.86	60.16	48.38	37.01	41.09
	Volume-Weighted Ave	25.65	32.25	35.83	33.33	29.01	29.32
Trading Price (\$/MWh)	Time-Weighted Ave	25.00	31.06	34.59	32.21	28.16	28.74
	Minimum	13.50	11.67	19.82	19.88	10.59	16.55
	Maximum	24.5	22.8	25.7	27.2	26.3	22.3
Temperature °C (Sydney)	Maximum	21.6	20.2	19.7	20.2	18.6	17.2
	Minimum						

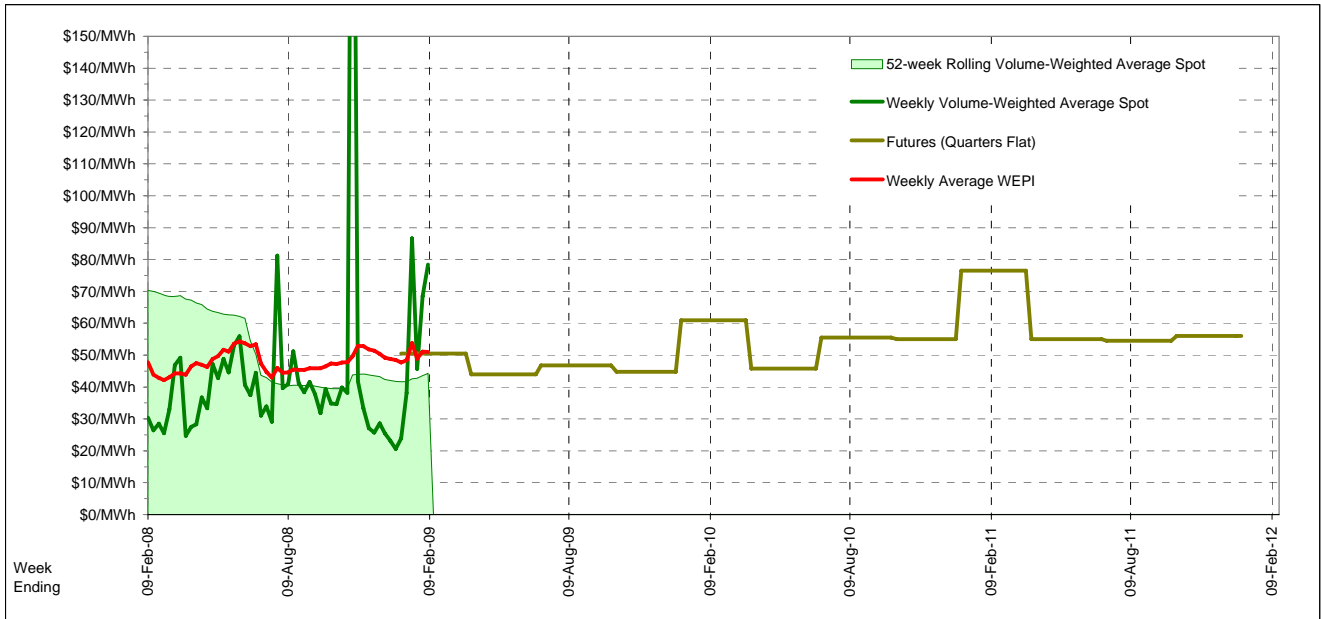
Long-Term Trends

This table contains electricity futures pricing, supplied by d-cyphatrade. All data other than flat and peak quarterly pricing is implied.

Futures settlement prices for flat load (all times)		CalYear	FinYear Ending	Q1	Q2	Q3	Q4
	2009	46.48		50.50	44.00	46.75	44.75
	2010	54.29	49.50	60.95	45.75	55.50	55.00
	2011	60.44	60.44	76.55	55.00	54.50	56.00
	2012						

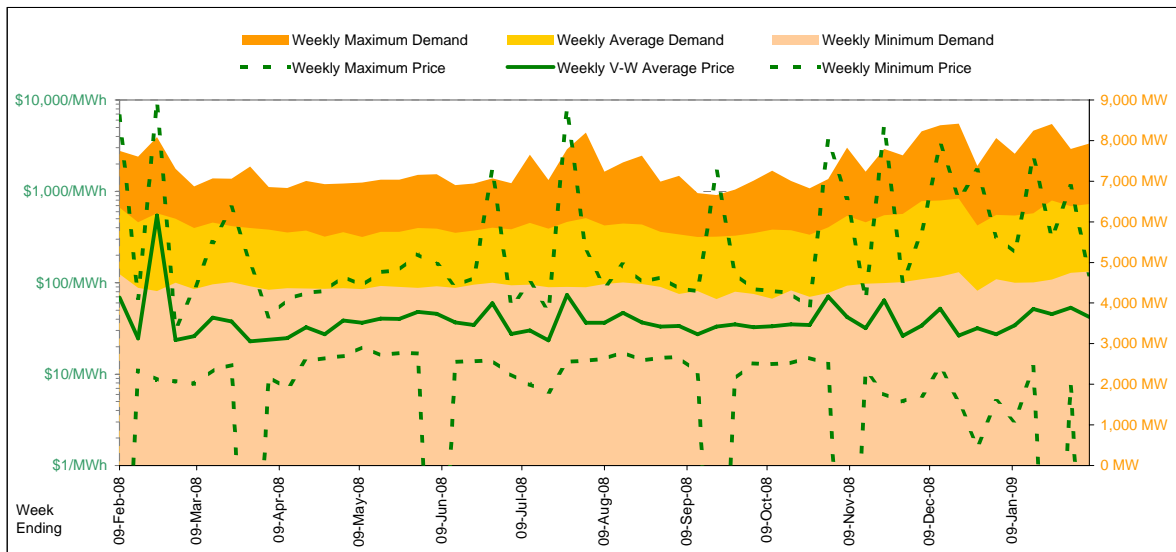
Futures settlement prices for peak load (7am-10pm M-F)		CalYear	FinYear Ending	Q1	Q2	Q3	Q4
	2009	67.09		75.00	63.00	65.00	65.50
	2010	78.30	71.52	90.00	66.00	78.00	79.00
	2011	55.51	71.53	78.25	50.00	51.00	43.00
	2012						

Implied Prices for Off-Peak Load (All other times)		CalYear	FinYear Ending	Q1	Q2	Q3	Q4
	2009	29.86		30.74	28.68	32.03	28.02
	2010	34.93	31.74	37.52	29.42	37.35	35.65
	2011	64.42	51.50	75.18	59.03	57.32	66.48
	2012						



Current Year

Energy (MWh)	Total	Week 6 Ending Saturday		52-Weeks Ending Sat		Date Occurred
		7-Feb-09	% change	9-Feb-08	7-Feb-09	
		1,081,558	1%	1,067,722	51,981,703	
Trading Demand (MW)	Maximum	7,927	2%	7,750	8,413	19-Dec-08
	Average	6,438	1%	6,355	5,950	
	Minimum	4,773	1%	4,711	4,100	20-Sep-08
Regional Load Factor (%)		81%		82%	71%	
Trading Price (\$/MWh)	Maximum	122.68	-98%	6622.24	9561.42	
	Volume-Weighted Ave	42.04	-39%	69.11	47.66	
	Time-Weighted Ave	39.08	-36%	61.31	42.92	
	Minimum	-108.09	78%	-500.34	-180.89	
Temperature °C (Brisbane)	Maximum	31.1	-7%	33.4	40.2	
	Minimum	21.9	12%	19.5	3.7	

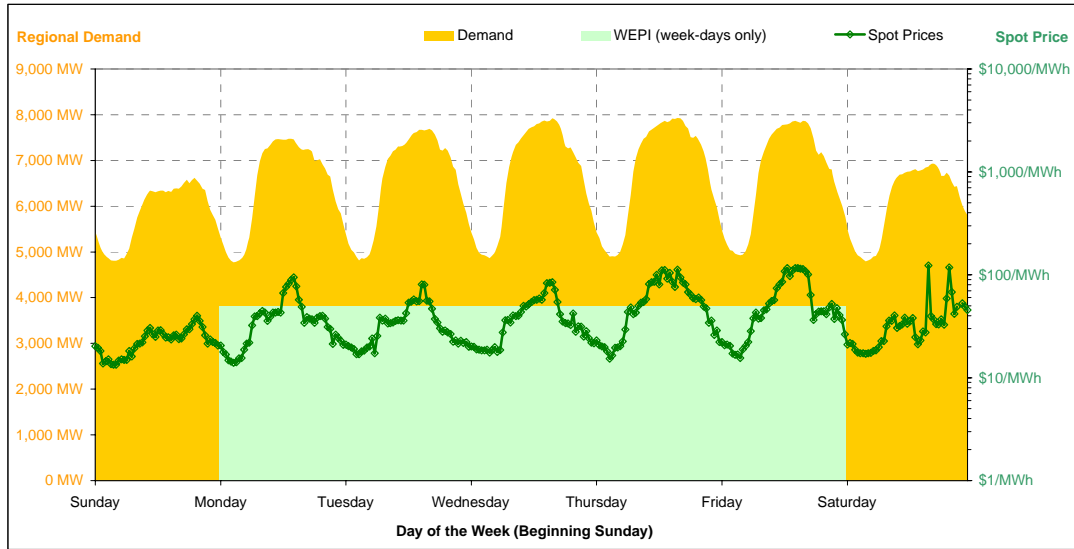


Note that prices below \$1/MWh have been reset to \$1/MWh for the purposes of this display

Current Week

All Data in this table is shown in MWh								
	Weekly Total	Sunday	Monday	Tuesday	Wednesday	Thursday	Friday	Saturday
Total Production by Generation Company								
AGL	29,582	3,408	4,569	4,270	4,229	5,081	5,059	2,968
Babcock & Brown Power	35,751	4,740	5,165	5,543	4,986	5,814	5,122	4,382
Callide Power Trading	125,537	17,032	18,124	18,238	17,621	17,980	19,066	17,477
CS Energy	317,506	42,441	44,960	45,468	45,686	46,930	47,346	44,675
Millmerran Energy Trader	115,973	19,887	19,264	19,757	19,576	16,633	10,429	10,428
Origen Energy	5,144	727	727	741	749	724	702	775
Stanwell	360,586	44,929	51,145	50,160	53,882	53,945	55,416	51,112
Tarong Energy	158,512	18,708	22,108	23,345	24,191	24,364	23,816	21,981
Tarong North Trader	59,928	8,628	9,009	7,477	9,230	7,187	9,531	8,867
Other QLD Plants	0	0	0	0	0	0	0	0
Total internal production	1,208,518	160,499	175,069	174,997	180,150	178,656	176,485	162,663
(Load at Pumped Storage)	-1,586	-912	0	0	-675	0	0	0
Net internal production	1,206,932	159,588	175,069	174,997	179,476	178,656	176,485	162,663
Percentage each company's production represents of the total internal production								
AGL	2.4%	2.1%	2.6%	2.4%	2.3%	2.8%	2.9%	1.8%
Babcock & Brown Power	3.0%	3.0%	2.9%	3.2%	2.8%	3.3%	2.9%	2.7%
Callide Power Trading	10.4%	10.6%	10.4%	10.4%	9.8%	10.1%	10.8%	10.7%
CS Energy	26.3%	26.4%	25.7%	26.0%	25.4%	26.3%	26.8%	27.5%
Millmerran Energy Trader	9.6%	12.4%	11.0%	11.3%	10.9%	9.3%	5.9%	6.4%
Origen Energy	0.4%	0.5%	0.4%	0.4%	0.4%	0.4%	0.4%	0.5%
Stanwell	29.8%	28.0%	29.2%	28.7%	29.9%	30.2%	31.4%	31.4%
Tarong Energy	13.1%	11.7%	12.6%	13.3%	13.4%	13.6%	13.5%	13.5%
Tarong North Trader	5.0%	5.4%	5.1%	4.3%	5.1%	4.0%	5.4%	5.5%
Other QLD Plants	0.0%	0.0%	0.0%	0.0%	0.0%	0.0%	0.0%	0.0%
Total Percentage	100.0%	100.0%	100.0%	100.0%	100.0%	100.0%	100.0%	100.0%

Current Week (continued)



	Sunday	Monday	Tuesday	Wednesday	Thursday	Friday	Saturday
For the Current Week							
Total Energy (MWh)	140,360	155,114	157,373	160,337	161,916	160,530	145,930
Trading Demand Target (MW)	Maximum	6,618	7,477	7,694	7,921	7,927	6,929
	Average	5,848	6,463	6,557	6,681	6,746	6,080
	Minimum	4,807	4,773	4,817	4,863	4,899	4,792
Regional Load Factor (%)	88%	86%	85%	84%	85%	85%	88%
Wholesale Electricity Price Index (WEPI)	N/A	49.18	49.17	49.28	49.64	49.26	N/A
	Maximum	40.11	94.77	80.91	84.81	112.02	122.68
	Volume-Weighted Ave	23.77	39.82	35.55	40.75	59.13	58.46
Trading Price (\$/MWh)	Time-Weighted Ave	23.13	37.49	33.72	38.20	54.77	54.10
	Minimum	13.32	13.96	16.88	17.60	15.32	15.49
	Maximum	27.9	28.4	29.8	30.6	30.4	31.1
Temperature °C (Brisbane)	Maximum	22.1	23.0	21.9	22.7	22.0	21.9
	Minimum						
Percentage Change from Same Week Last Year							
Total Energy (MWh)	-2%	-0%	1%	4%	3%	4%	-1%
Trading Demand Target (MW)	Maximum	-4%	-1%	3%	6%	2%	3%
	Average	-2%	-0%	1%	4%	3%	4%
	Minimum	1%	-0%	-1%	2%	4%	4%
Wholesale Electricity Price Index (WEPI)	N/A	-5%	-6%	1%	1%	1%	N/A
	Maximum	21%	-94%	-33%	39%	-98%	-86%
	Volume-Weighted Ave	1%	-32%	-10%	32%	-76%	16%
Trading Price (\$/MWh)	Time-Weighted Ave	1%	-27%	-11%	27%	-75%	16%
	Minimum	10%	103%	-8%	-6%	52%	-2%
	Maximum	-0%	0%	5%	7%	-5%	5%
Temperature °C (Brisbane)	Maximum	-4%	0%	-1%	10%	9%	12%
	Minimum						
For the Same Week Last Year							
Total Energy (MWh)	142,723	155,678	155,843	153,937	157,111	154,965	147,465
Trading Demand Target (MW)	Maximum	6,882	7,532	7,471	7,469	7,750	7,660
	Average	5,947	6,487	6,493	6,414	6,546	6,457
	Minimum	4,761	4,789	4,883	4,778	4,711	4,740
Regional Load Factor (%)	86%	86%	87%	86%	84%	84%	88%
Wholesale Electricity Price Index (WEPI)	N/A	51.74	52.05	48.97	49.34	48.55	N/A
	Maximum	33.03	1689.02	120.36	61.23	6622.24	858.74
	Volume-Weighted Ave	23.58	58.54	39.64	30.97	247.42	50.34
Trading Price (\$/MWh)	Time-Weighted Ave	22.90	51.30	37.84	30.07	215.98	46.66
	Minimum	12.16	-500.34	18.26	18.82	10.07	15.76
	Maximum	28.0	28.3	28.3	28.6	32.0	29.6
Temperature °C (Brisbane)	Maximum	23.0	23.0	22.2	20.7	20.1	19.5
	Minimum						

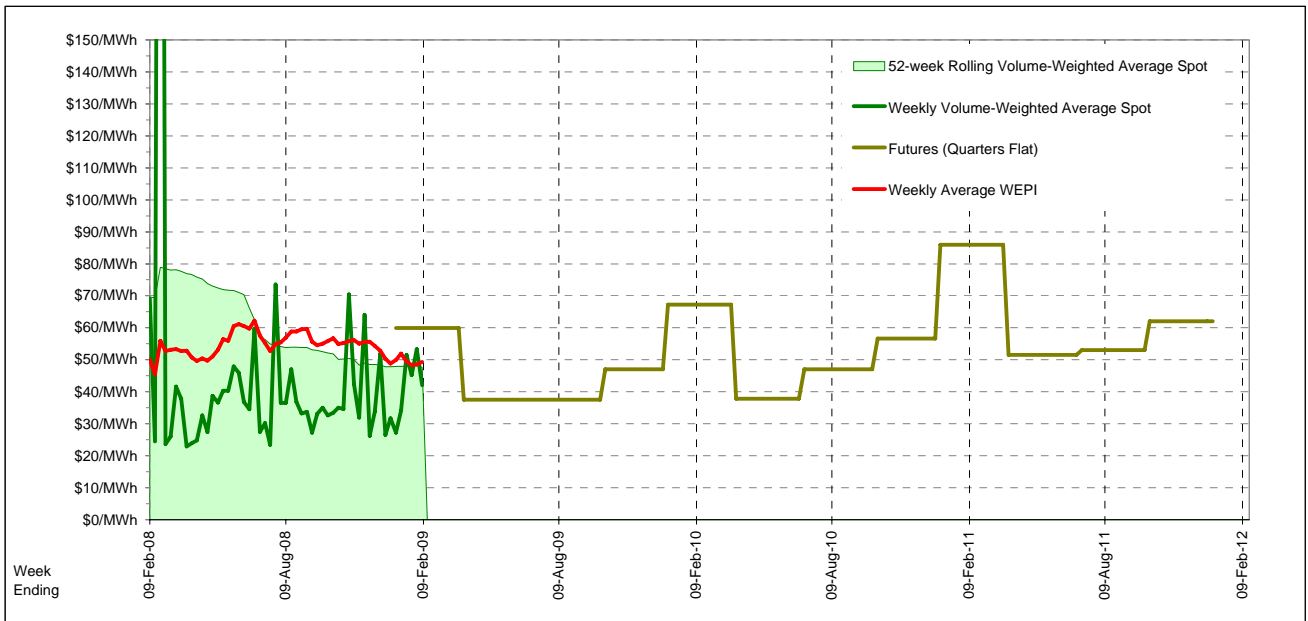
Long-Term Trends

This table contains electricity futures pricing, supplied by d-cyphatrade. All data other than flat and peak quarterly pricing is implied.

<i>Futures settlement prices</i> for flat load (all times)	CalYear	FinYear Ending	Q1	Q2	Q3	Q4
	2009	45.43	59.95	37.50	37.50	47.00
	2010	52.14	47.32	67.25	37.85	47.00
	2011	63.03	60.17	86.00	51.50	53.00
	2012					62.00

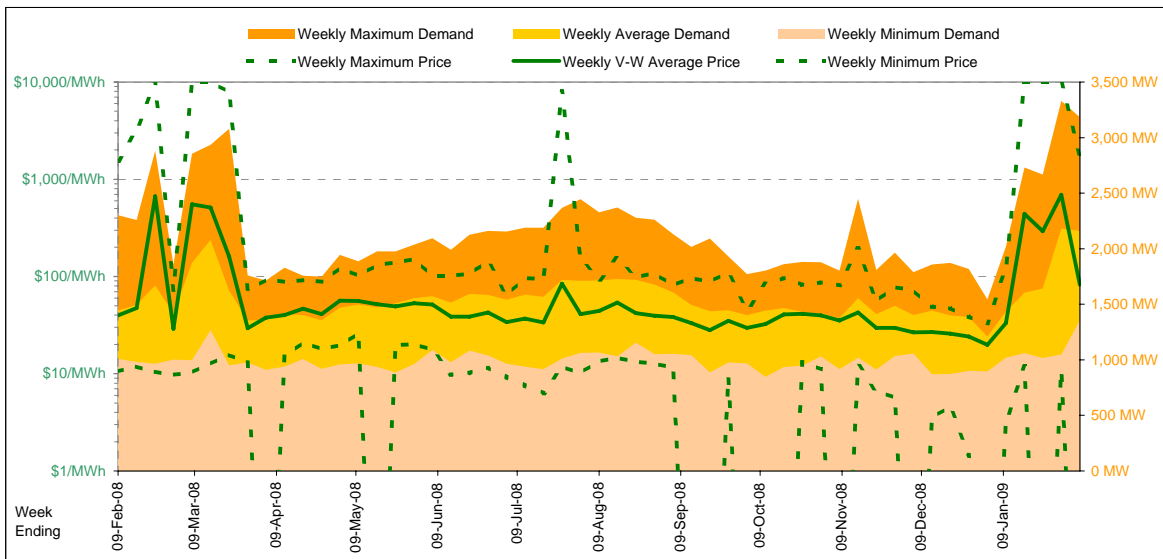
<i>Futures settlement prices</i> for peak load (7am-10pm M-F)	CalYear	FinYear Ending	Q1	Q2	Q3	Q4
	2009	67.57	100.00	49.25	48.50	73.00
	2010	73.26	70.55	112.00	49.00	76.00
	2011	86.14	82.80	140.00	60.00	60.00
	2012					85.00

<i>Implied Prices</i> for Off-Peak Load (All other times)	CalYear	FinYear Ending	Q1	Q2	Q3	Q4
	2009	27.58	27.65	28.02	28.63	26.03
	2010	35.11	28.59	31.16	28.86	39.74
	2011	44.39	41.92	42.45	44.65	47.35
	2012					43.45



Current Year

Energy (MWh)	Total	Week 6 Ending Saturday		52-Weeks Ending Sat		Date Occurred
		7-Feb-09	% change	9-Feb-08	7-Feb-09	
		362,858	50%	242,674	13,543,422	
Trading Demand (MW)	Maximum	3,182	38%	2,301	3,331	28-Jan-09
	Average	2,160	50%	1,444	1,550	
	Minimum	1,356	35%	1,007	847	11-Oct-08
Regional Load Factor (%)		68%		63%	47%	
Trading Price (\$/MWh)	Maximum	1762.65	14%	1543.57	9999.92	
	Volume-Weighted Ave	82.14	106%	39.93	111.40	
	Time-Weighted Ave	70.94	98%	35.78	76.45	
	Minimum	-471.61	-4,558%	10.58	-1000.00	
Temperature °C (Adelaide)	Maximum	43.9	30%	33.7	45.7	
	Minimum	19.1	62%	11.8	0.7	

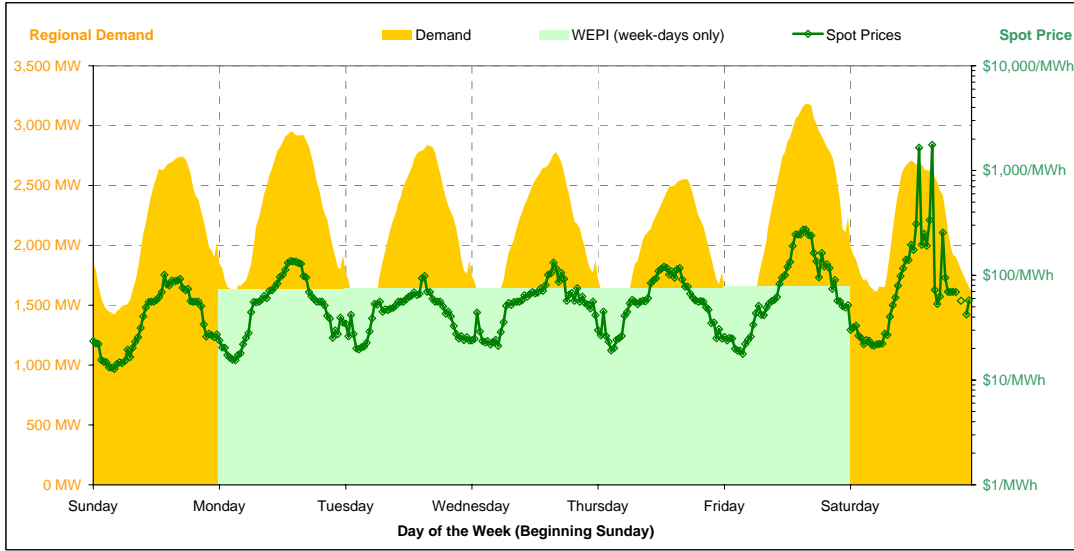


Note that prices below \$1/MWh have been reset to \$1/MWh for the purposes of this display

Current Week

All Data in this table is shown in MWh								
	Weekly Total	Sunday	Monday	Tuesday	Wednesday	Thursday	Friday	Saturday
Total Production by Generation Company								
AGL	110,151	12,609	16,863	14,258	16,400	15,741	18,329	15,952
International Power (Pelican Point)	68,893	9,332	9,706	9,910	10,045	10,084	9,978	9,839
International Power (Synergen)	1,328	0	0	0	0	2	291	1,036
Flinders Power	108,279	15,964	16,247	17,190	14,436	15,343	14,275	14,825
Origin Energy	17,887	2,320	2,495	2,582	2,619	2,688	2,526	2,659
Osborne	26,090	3,435	3,784	3,655	3,757	3,790	3,874	3,797
TRUenergy	3,703	501	460	0	22	562	1,026	1,133
Other SA Plants	6,161	976	1,341	1,050	347	722	642	1,085
Total internal production	342,491	45,136	50,894	48,645	47,624	48,930	50,940	50,323
(Load at Pumped Storage)	0	0	0	0	0	0	0	0
Net internal production	342,491	45,136	50,894	48,645	47,624	48,930	50,940	50,323
Percentage each company's production represents of the total internal production								
AGL	32.2%	27.9%	33.1%	29.3%	34.4%	32.2%	36.0%	31.7%
International Power (Pelican Point)	20.1%	20.7%	19.1%	20.4%	21.1%	20.6%	19.6%	19.6%
International Power (Synergen)	0.4%	0.0%	0.0%	0.0%	0.0%	0.0%	0.6%	2.1%
Flinders Power	31.6%	35.4%	31.9%	35.3%	30.3%	31.4%	28.0%	29.5%
Origin Energy	5.2%	5.1%	4.9%	5.3%	5.5%	5.5%	5.0%	5.3%
Osborne	7.6%	7.6%	7.4%	7.5%	7.9%	7.7%	7.6%	7.5%
TRUenergy	1.1%	1.1%	0.9%	0.0%	0.0%	1.1%	2.0%	2.3%
Other SA Plants	1.8%	2.2%	2.6%	2.2%	0.7%	1.5%	1.3%	2.2%
Total Percentage	100.0%	100.0%	100.0%	100.0%	100.0%	100.0%	100.0%	100.0%

Current Week (continued)



	Sunday	Monday	Tuesday	Wednesday	Thursday	Friday	Saturday
For the Current Week							
Total Energy (MWh)	50,439	55,066	51,432	50,852	48,289	55,955	50,826
Trading Demand Target (MW)	Maximum	2,744	2,949	2,839	2,778	2,554	3,182
	Average	2,102	2,294	2,143	2,119	2,012	2,331
	Minimum	1,422	1,592	1,423	1,478	1,430	1,356
Regional Load Factor (%)	N/A	77%	78%	75%	76%	79%	78%
Wholesale Electricity Price Index (WEPI)	Maximum	100.77	136.99	98.47	132.46	120.18	272.70
	Volume-Weighted Ave	49.01	67.34	49.65	62.77	65.78	113.63
	Time-Weighted Ave	43.32	60.16	46.34	57.99	60.80	95.45
Trading Price (\$/MWh)	Maximum	12.76	15.44	19.63	21.15	19.20	17.80
	Volume-Weighted Ave	40.6	38.8	36.3	33.0	35.6	43.9
	Time-Weighted Ave	25.9	28.3	21.5	19.3	19.1	21.0
Temperature °C (Adelaide)	Maximum	40.6	38.8	36.3	33.0	35.6	43.9
	Minimum	25.9	28.3	21.5	19.3	19.1	21.0
Percentage Change from Same Week Last Year							
Total Energy (MWh)	52%	31%	46%	50%	40%	67%	69%
Trading Demand Target (MW)	Maximum	56%	28%	64%	74%	55%	102%
	Average	52%	31%	46%	50%	40%	67%
	Minimum	41%	38%	22%	34%	26%	20%
Wholesale Electricity Price Index (WEPI)	Maximum	N/A	-5%	4%	6%	4%	17%
	Volume-Weighted Ave	160%	-91%	57%	157%	202%	512%
	Time-Weighted Ave	80%	-18%	38%	83%	118%	266%
Trading Price (\$/MWh)	Maximum	69%	-14%	32%	73%	107%	213%
	Volume-Weighted Ave	16%	30%	1%	2%	81%	6%
	Time-Weighted Ave	18%	33%	26%	23%	33%	78%
Temperature °C (Adelaide)	Maximum	20%	15%	48%	61%	58%	111%
	Minimum	18%	33%	26%	23%	33%	78%
For the Same Week Last Year							
Total Energy (MWh)	33,292	42,188	35,121	33,914	34,527	33,501	30,132
Trading Demand Target (MW)	Maximum	1,763	2,301	1,732	1,600	1,645	1,572
	Average	1,387	1,758	1,463	1,413	1,439	1,396
	Minimum	1,007	1,150	1,165	1,107	1,132	1,130
Regional Load Factor (%)	79%	76%	84%	88%	87%	89%	86%
Wholesale Electricity Price Index (WEPI)	Maximum	N/A	77.99	72.31	71.14	71.73	66.97
	Volume-Weighted Ave	38.72	1543.57	62.85	51.60	39.75	44.55
	Time-Weighted Ave	27.22	82.62	35.99	34.26	30.12	31.03
Trading Price (\$/MWh)	Maximum	25.70	70.29	35.00	33.57	29.41	30.49
	Volume-Weighted Ave	10.98	11.87	19.46	20.69	10.58	16.76
	Time-Weighted Ave	33.7	33.7	24.5	20.5	22.6	20.8
Temperature °C (Adelaide)	Maximum	33.7	33.7	24.5	20.5	22.6	22.7
	Minimum	21.9	21.2	17.0	15.7	14.4	11.9

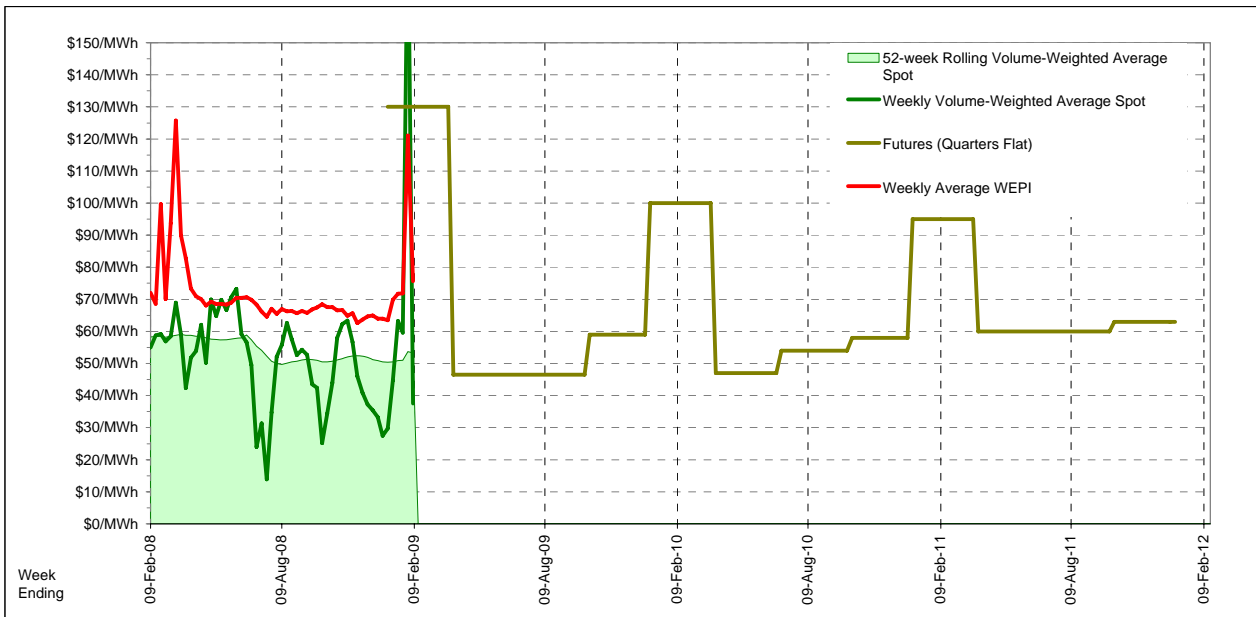
Long-Term Trends

This table contains electricity futures pricing, supplied by d-cyphatrade. All data other than flat and peak quarterly pricing is implied.

<i>Futures settlement prices</i> for flat load (all times)	CalYear	FinYear Ending	Q1	Q2	Q3	Q4	
	2009	70.24	130.00	46.50	46.50	59.00	
	2010	64.61	62.97	100.00	47.00	54.00	58.00
	2011	69.39	66.61	95.00	60.00	60.00	63.00
	2012						

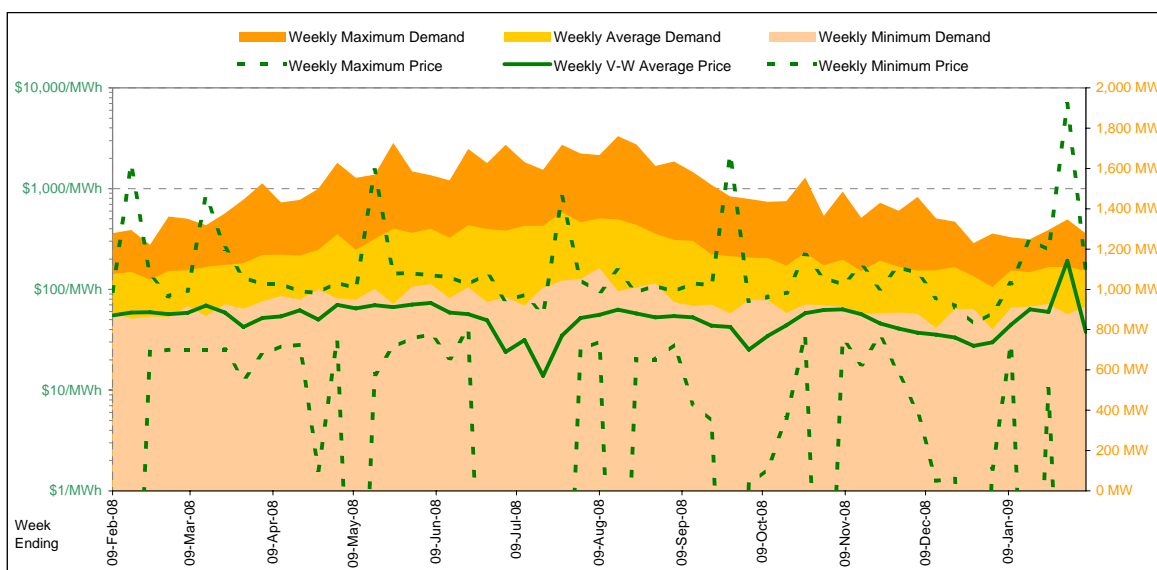
<i>Futures settlement prices</i> for peak load (7am-10pm M-F)	CalYear	FinYear Ending	Q1	Q2	Q3	Q4	
	2009	99.12	200.00	62.00	50.70	86.50	
	2010	78.02	75.30	102.00	63.00	73.00	74.00
	2011	55.88	70.94	100.00	36.50	42.75	45.50
	2012						

<i>Implied Prices</i> for Off-Peak Load (All other times)	CalYear	FinYear Ending	Q1	Q2	Q3	Q4	
	2009	46.95	73.55	34.00	43.11	36.82	
	2010	53.80	53.03	98.39	34.10	38.68	45.10
	2011	80.29	63.12	90.97	78.95	73.91	77.11
	2012						



Current Year

		Week 6 Ending Saturday			52-Weeks Ending Sat	
		7-Feb-09	% change	9-Feb-08	7-Feb-09	Date Occurred
Energy (MWh)	Total	183,705	2%	180,884	10,370,068	
	Maximum	1,277	-0%	1,278	1,760	11-Aug-08
	Average	1,093	2%	1,077	1,187	
Trading Demand (MW)	Minimum	917	4%	885	802	29-Dec-08
	Regional Load Factor (%)	86%		84%	67%	
Trading Price (\$/MWh)	Maximum	152.52	59%	95.79	6880.22	
	Volume-Weighted Ave	37.52	-32%	54.95	53.24	
	Time-Weighted Ave	35.24	-35%	54.16	52.01	
	Minimum	-999.71	-878%	-102.22	-999.76	
Temperature °C (Hobart)	Maximum	30.1	9%	27.6	37.3	
	Minimum	11.5	28%	9.0	0.3	

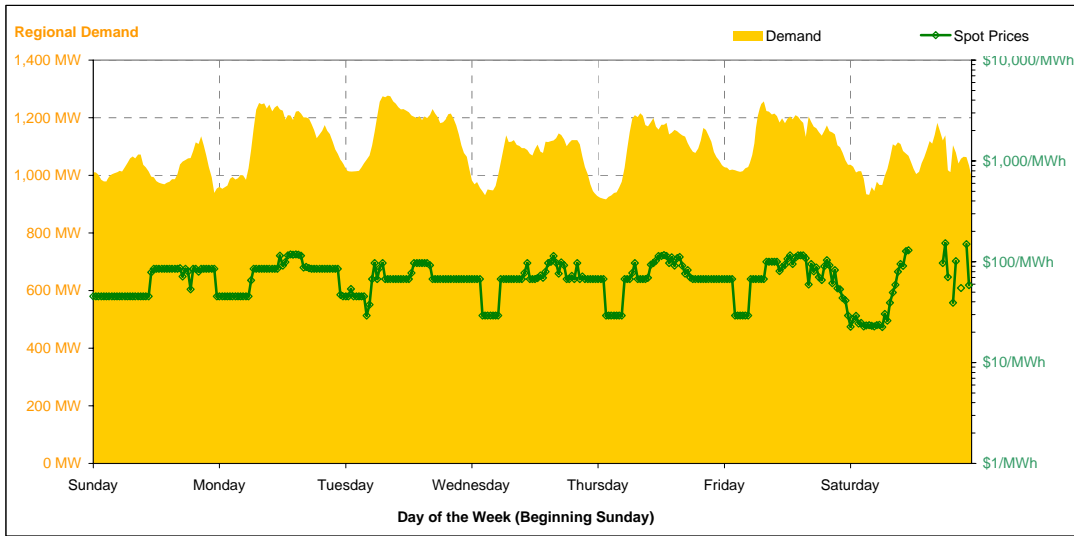


Note that prices below \$1/MWh have been reset to \$1/MWh for the purposes of this display

Current Week

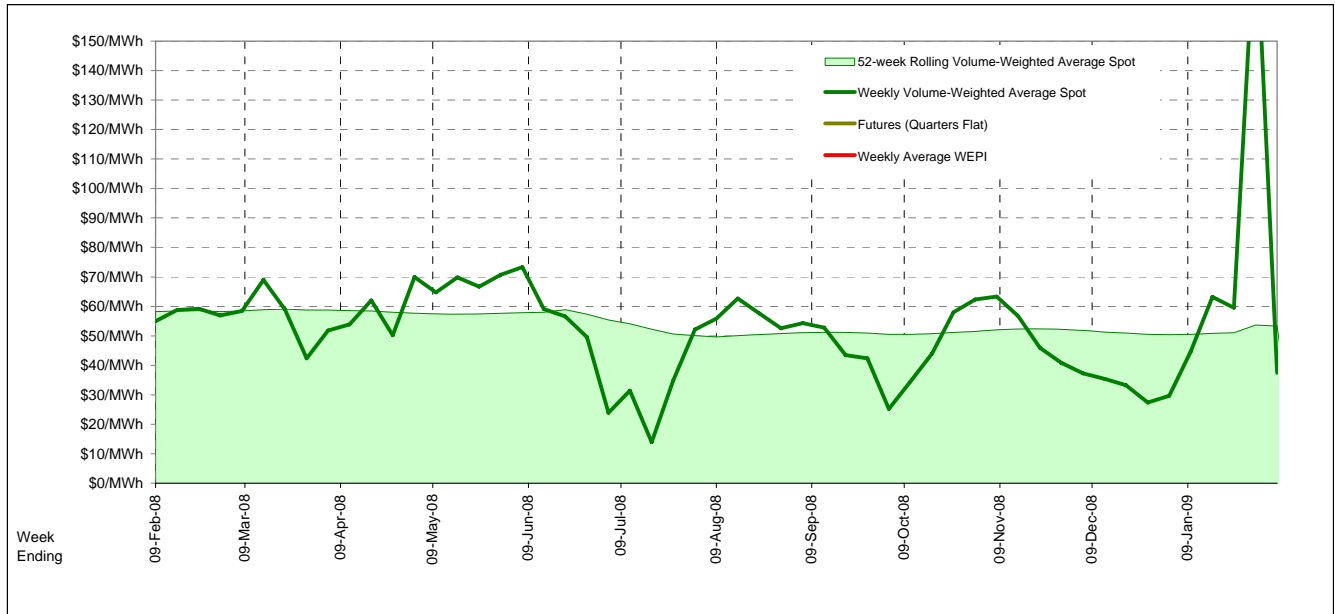
All Data in this table is shown in MWh								
Weekly Total	Sunday	Monday	Tuesday	Wednesday	Thursday	Friday	Saturday	
Total Production by Generation Company								
Hydro Tasmania	114,756	12,312	16,571	14,698	13,649	16,450	18,352	22,726
Bell Bay Power	20,870	2,856	3,029	2,992	3,052	3,037	3,049	2,856
Other TAS Plants	0	0	0	0	0	0	0	0
Total internal production	135,626	15,167	19,600	17,690	16,701	19,486	21,401	25,582
(Load at Pumped Storage)	0	0	0	0	0	0	0	0
Net internal production	135,626	15,167	19,600	17,690	16,701	19,486	21,401	25,582
Percentage each company's production represents of the total internal production								
Hydro Tasmania	84.6%	81.2%	84.5%	83.1%	81.7%	84.4%	85.8%	88.8%
Bell Bay Power	15.4%	18.8%	15.5%	16.9%	18.3%	15.6%	14.2%	11.2%
Other TAS Plants	0.0%	0.0%	0.0%	0.0%	0.0%	0.0%	0.0%	0.0%
Total Percentage	100.0%	100.0%	100.0%	100.0%	100.0%	100.0%	100.0%	100.0%

Current Week (continued)



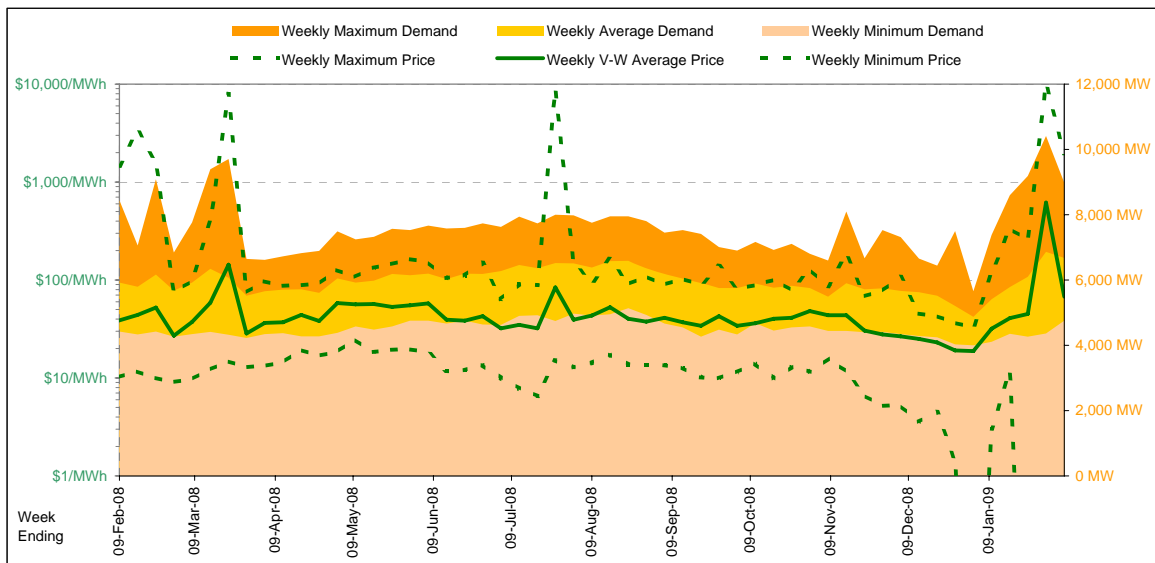
		Sunday	Monday	Tuesday	Wednesday	Thursday	Friday	Saturday
For the Current Week								
Total Energy (MWh)		24,548	27,165	27,890	25,421	26,330	27,268	25,085
Trading Demand Target (MW)	Maximum	1,136	1,251	1,277	1,146	1,216	1,257	1,182
	Average	1,023	1,132	1,162	1,059	1,097	1,136	1,045
	Minimum	939	953	1,013	931	917	1,012	932
Regional Load Factor (%)	Maximum	86.27	118.22	97.30	113.79	116.88	115.77	152.52
	Average	64.84	80.23	69.34	69.01	74.90	76.47	-184.31
Trading Price (\$/MWh)	Volume-Weighted Ave	64.81	78.41	68.55	68.11	73.39	75.12	-181.69
	Time-Weighted Ave	45.28	45.28	29.30	29.22	29.25	29.30	-999.71
Temperature °C (Hobart)	Maximum	20.5	20.6	20.1	24.4	30.1	22.2	26.0
	Minimum	12.2	14.4	11.5	13.8	16.3	14.0	14.9
Percentage Change from Same Week Last Year								
Total Energy (MWh)		-4%	6%	4%	-3%	5%	2%	1%
Trading Demand Target (MW)	Maximum	-2%	6%	3%	-4%	4%	-2%	0%
	Average	-4%	6%	4%	-3%	5%	2%	1%
	Minimum	2%	6%	9%	1%	4%	5%	-2%
Regional Load Factor (%)	Maximum	15%	33%	12%	51%	55%	54%	59%
	Average	33%	99%	23%	15%	18%	29%	-428%
Trading Price (\$/MWh)	Volume-Weighted Ave	35%	97%	24%	15%	18%	28%	-426%
	Time-Weighted Ave	76%	144%	12%	12%	12%	0%	-4,064%
Temperature °C (Hobart)	Maximum	22%	-25%	-14%	6%	76%	24%	57%
	Minimum	-12%	8%	-28%	-8%	33%	52%	66%
For the Same Week Last Year								
Total Energy (MWh)		25,515	25,559	26,768	26,210	25,182	26,714	24,937
Trading Demand Target (MW)	Maximum	1,163	1,183	1,240	1,198	1,172	1,278	1,178
	Average	1,063	1,065	1,115	1,092	1,049	1,113	1,039
	Minimum	924	898	926	919	885	962	951
Regional Load Factor (%)	Maximum	75.22	88.58	86.90	75.22	75.21	75.23	95.79
	Average	48.78	40.26	56.25	60.03	63.37	59.49	56.19
Trading Price (\$/MWh)	Volume-Weighted Ave	48.19	39.90	55.22	59.03	62.35	58.66	55.73
	Time-Weighted Ave	25.72	-102.22	26.20	26.20	26.20	29.21	25.22
Temperature °C (Hobart)	Maximum	16.8	27.6	23.5	23.0	17.1	17.9	16.6
	Minimum	13.9	13.3	16.0	15.0	12.3	9.2	9.0

Long-Term Trends



Current Year

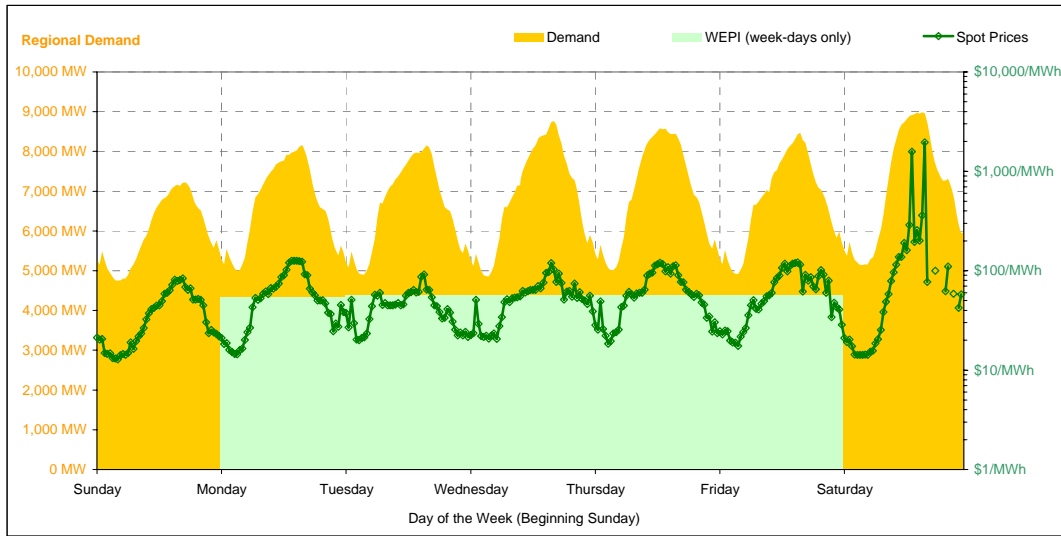
		Week 6 Ending Saturday		52-Weeks Ending Sat		Date Occurred
		7-Feb-09	% change	9-Feb-08	7-Feb-09	
Energy (MWh)	Total	1,121,076	13%	994,368	52,171,385	
Trading Demand (MW)	Maximum	8,984	6%	8,442	10,415	29-Jan-09
	Average	6,673	13%	5,919	5,972	
	Minimum	4,752	7%	4,425	4,004	28-Dec-08
Regional Load Factor (%)		74%		70%	57%	
Trading Price (\$/MWh)	Maximum	1951.33	33%	1469.09	10000.00	
	Volume-Weighted Ave	67.79	75%	38.76	56.34	
	Time-Weighted Ave	59.22	66%	35.61	47.99	
	Minimum	-474.84	-4,733%	10.25	-474.84	
Temperature °C (Melbourne)	Maximum	46.4	39%	33.3	46.4	
	Minimum	16.8	25%	13.4	2.2	



Current Week

All Data in this table is shown in MWh								
	Weekly Total	Sunday	Monday	Tuesday	Wednesday	Thursday	Friday	Saturday
Total Production by Generation Company								
AGL	11,378	718	1,930	1,400	416	1,465	2,056	3,395
Anglesea	26,523	3,840	3,840	3,840	3,840	3,797	3,722	3,645
Babcock & Brown Power	7,333	1,380	1,256	1,083	894	785	793	1,144
Ecogen Energy	68,494	5,697	10,739	8,449	10,425	12,510	10,579	10,096
Energy Brix	25,144	3,687	3,679	3,527	3,554	3,544	3,582	3,572
International Power (Hazelwood)	246,120	33,386	36,514	36,554	37,209	37,075	34,225	31,159
Loy Yang B	151,650	22,358	19,296	21,134	20,264	21,609	22,673	24,317
Loy Yang Power	320,224	48,502	42,887	44,796	43,179	45,466	48,224	47,172
Snowy Hydro	90,720	4,270	14,192	9,654	15,175	13,888	16,300	17,243
TRUenergy	238,539	34,522	34,379	34,363	34,335	34,423	34,440	32,079
Other VIC Plants	2,230	403	408	380	406	412	221	0
Total internal production	1,188,352	158,761	169,116	165,178	169,695	174,972	176,812	173,820
(Load at Pumped Storage)	0	0	0	0	0	0	0	0
Net internal production	1,188,352	158,761	169,116	165,178	169,695	174,972	176,812	173,820
Percentage each company's production represents of the total internal production								
AGL	1.0%	0.5%	1.1%	0.8%	0.2%	0.8%	1.2%	2.0%
Anglesea	2.2%	2.4%	2.3%	2.3%	2.3%	2.2%	2.1%	2.1%
Babcock & Brown Power	0.6%	0.9%	0.7%	0.7%	0.5%	0.4%	0.4%	0.7%
Ecogen Energy	5.8%	3.6%	6.3%	5.1%	6.1%	7.1%	6.0%	5.8%
Energy Brix	2.1%	2.3%	2.2%	2.1%	2.1%	2.0%	2.0%	2.1%
International Power (Hazelwood)	20.7%	21.0%	21.6%	22.1%	21.9%	21.2%	19.4%	17.9%
Loy Yang B	12.8%	14.1%	11.4%	12.8%	11.9%	12.4%	12.8%	14.0%
Loy Yang Power	26.9%	30.6%	25.4%	27.1%	25.4%	26.0%	27.3%	27.1%
Snowy Hydro	7.6%	2.7%	8.4%	5.8%	8.9%	7.9%	9.2%	9.9%
TRUenergy	20.1%	21.7%	20.3%	20.8%	20.2%	19.7%	19.5%	18.5%
Other VIC Plants	0.2%	0.3%	0.2%	0.2%	0.2%	0.2%	0.1%	0.0%
Total Percentage	100.0%	100.0%	100.0%	100.0%	100.0%	100.0%	100.0%	100.0%

Current Week (continued)



	Sunday	Monday	Tuesday	Wednesday	Thursday	Friday	Saturday
For the Current Week							
Total Energy (MWh)	143,576	159,504	157,981	164,556	165,565	161,475	168,421
Trading Demand Target (MW)	Maximum	7,222	8,167	8,153	8,772	8,581	8,984
	Average	5,982	6,646	6,583	6,856	6,899	6,728
	Minimum	4,752	4,999	4,903	4,858	5,011	4,918
Regional Load Factor (%)	83%	81%	81%	78%	80%	79%	78%
Wholesale Electricity Price Index (WEPI)	Maximum	83.90	126.16	91.60	119.06	119.99	120.91
	Average	N/A	54.70	56.88	57.46	57.47	57.10
	Minimum	N/A	37.47	43.32	20.60	18.50	17.48
Trading Price (\$/MWh)	Volume-Weighted Ave	40.41	61.38	45.52	58.38	66.31	66.38
	Time-Weighted Ave	37.47	56.32	43.32	54.54	60.99	61.50
	Minimum	12.83	14.46	20.00	20.60	18.50	17.48
Temperature °C (Melbourne)	Maximum	33.8	28.5	30.2	30.2	29.2	33.1
	Minimum	20.3	20.8	20.5	16.8	19.8	17.9
Percentage Change from Same Week Last Year							
Total Energy (MWh)	10%	-1%	4%	11%	18%	17%	36%
Trading Demand Target (MW)	Maximum	17%	-3%	11%	24%	32%	61%
	Average	10%	-1%	4%	11%	18%	36%
	Minimum	7%	4%	-3%	1%	6%	16%
Wholesale Electricity Price Index (WEPI)	N/A	9%	17%	21%	24%	26%	N/A
Trading Price (\$/MWh)	Maximum	123%	-91%	35%	115%	194%	5,514%
	Volume-Weighted Ave	57%	-20%	19%	63%	121%	398%
	Time-Weighted Ave	50%	-16%	17%	57%	108%	288%
Temperature °C (Melbourne)	Maximum	13%	28%	3%	-0%	80%	11%
	Minimum	29%	-14%	19%	22%	45%	54%
	6%	5%	6%	-13%	33%	25%	40%
For the Same Week Last Year							
Total Energy (MWh)	129,939	161,852	152,115	148,059	140,114	138,155	124,135
Trading Demand Target (MW)	Maximum	6,165	8,442	7,359	7,102	6,513	6,438
	Average	5,414	6,744	6,338	6,169	5,838	5,756
	Minimum	4,425	4,802	5,062	4,816	4,706	4,430
Regional Load Factor (%)	88%	80%	86%	87%	90%	89%	93%
Wholesale Electricity Price Index (WEPI)	Maximum	37.56	1469.09	67.91	55.32	40.84	46.69
	Average	N/A	50.39	48.67	47.32	46.35	45.37
	Minimum	N/A	24.99	36.96	34.72	29.28	30.05
Trading Price (\$/MWh)	Volume-Weighted Ave	25.77	76.47	38.24	35.81	30.03	30.68
	Time-Weighted Ave	24.99	67.42	36.96	34.72	29.28	30.05
	Minimum	11.33	11.31	19.49	20.65	10.25	15.81
Temperature °C (Melbourne)	Maximum	26.3	33.3	25.4	24.8	20.2	21.5
	Minimum	19.2	19.9	19.3	19.3	14.9	14.3

Long-Term Trends

This table contains electricity futures pricing, supplied by d-cyphatrade. All data other than flat and peak quarterly pricing is implied.

		CalYear	FinYear Ending	Q1	Q2	Q3	Q4
Actual Prices for Flat Load (All Times)	2009	52.79		80.00	44.25	44.75	42.65
	2010	57.81	52.62	78.25	45.30	54.00	54.00
	2011	67.99	64.37	94.45	55.60	60.65	61.70
	2012						
Actual Prices for Peak Load (7am-10pm M-F)	2009	80.04		140.00	61.20	61.20	60.25
	2010	79.77	78.62	140.00	55.45	62.00	64.00
	2011	77.57	78.40	139.20	50.20	57.20	65.55
	2012						
Implied Prices for Off-Peak Load (All other times)	2009	30.81		31.61	30.58	31.48	28.46
	2010	40.10	31.65	28.45	37.11	47.55	45.94
	2011	60.26	53.06	58.36	59.95	63.43	58.60
	2012						

