

## Treasurer cancels Parliamentary ETS inquiry

Federal Treasurer Wayne Swan has cancelled the House of Representatives Economics Committee inquiry into emissions trading as the least-cost policy mechanism to reduce Australia's carbon pollution, saying it has become "politicised".

Swan's decision late Thursday 19 February followed a proposal earlier in the day by Committee Chair Craig Thomson to table an interim report in May 2009 prior to the introduction of the emissions trading scheme legislation into Parliament.

Swan has defended the decision to shut down his own inquiry into an emissions trading scheme, and says the Government remains committed to an ETS.

"We're not going to delay the legislation," Swan says. "We don't make any apologies for a slower start because of the global recession."

Thomson says the government does not want any ambiguity over the implementation of the Carbon Pollution Reduction Scheme or the timeframes it has announced for that implementation.

Climate Change Minister Penny Wong says the Government's timeframe is very clear.

"The Government remains committed to the CPRS, and we remain committed to the timetable for its introduction that the Prime Minister announced when we released the White Paper in December of last year," says Wong.

"We will be producing draft legislation very shortly and we intend to put this legislation into the Parliament in the winter session."

The key objective of the inquiry had been to examine the relative merits of a cap-and-trade emissions trading policy mechanism against alternatives such as regulatory responses, carbon taxes, baseline and credit or hybrid schemes.

"The fact is, a market mechanism is the cheapest, most cost-effective way of reducing Australia's emissions. It also ensures that we can achieve an environmental target which a carbon tax does not," Wong says.

Meanwhile, Opposition Emissions Trading Spokesman Andrew Robb says the Coalition has commissioned an independent review into the proposed scheme.

"We have asked a committee of inquiry to look at all options including a tax and I think we need to be open-minded," Robb says.

"I'd like to see what we're advised from our inquiry which is tabled in a couple of weeks."

### This week's volume-weighted electricity price (\$/MWh)

NSW:	\$53.17
Vic:	\$21.90
Qld:	\$53.95
SA:	\$22.76
Tas:	\$37.13





















## Calendar of Events

26 February 2009

**Public information sessions** will be held around **regional Australia** on 26 February 2009, about the Australian Government's **Carbon Pollution Reduction Scheme**, via Sky Channel broadcast. The presentation will cover topics such as assistance to households and industry under the scheme, and the Climate Change Action Fund. It will include an introduction by Climate Change Minister Senator Penny Wong and a presentation by a senior executive from the Department of Climate Change. Although no-one from the Department will be physically present at the presentation, participants will be able to ask questions via a telephone hotline open during the broadcast. Questions can be emailed in advance to [info@coomatechcentre.com.au](mailto:info@coomatechcentre.com.au).

See <http://www.climatechange.gov.au/whitepaper/information-sessions.html> for a list of locations, venues and times. Anyone interested in attending one of the meetings must register, as seating is limited. Register to attend by phoning 1800 057 590, Monday to Friday between 8.30 am and 7.00 pm AEST.

12 March 2009

A course in **emissions trading** presented by Macquarie University Applied Finance Centre will be held in Sydney on the 12 March, 13 August and 28 October, and in Melbourne on 4 June. This course, designed for finance professionals, is designed to bring participants up to speed with the emerging domestic and global carbon markets. An emissions trading simulation will be run during the course; that is, lecture material will be interspersed with simulation activities. It is designed to illustrate the decision-making processes required in a carbon-constrained world, exploring such issues such as the setting of targets, permit allocation, carbon price discovery, permit 'vintages', and monetising abatement projects. This will be a group exercise where each group role plays a critical part of the economy.

A 10 per cent discount on the registration fee is available for members of esaa. Visit [http://www.mafc.mq.edu.au/short\\_courses.htm](http://www.mafc.mq.edu.au/short_courses.htm) for more information about the course.

19 – 20 March 2009

A Standard & Poor's **Financial Institutions Risk Analysis Workshop** will be held in Sydney on 19 and 20 March 2009. Standard & Poor's financial institutions risk analysis training provides participants with valuable knowledge to make better informed decisions, especially in the current volatile credit market conditions.

Based on Standard & Poor's rating methodology, the two-day workshop uses real-life local case studies, and is led by senior analysts.

The workshop provides:

- an understanding of how S&P assigns ratings to financial institutions
- a structured approach to credit analysis
- an understanding of the impact that external factors can have on credit
- knowledge of financial risk appetite and its implications, and
- tools for calculating and interpreting key financial ratios used in credit.

A 10 per cent discount is available to esaa members. To view the course outline visit <http://www2.standardandpoors.com/spf/pdf/fixedincome/FICreditRiskTraining2009.pdf> or contact Damien Jacotine on 03 9631 2180 or Zoe King on 02 9255 9824 for more information.

24 March 2009

**AEA Energy State of The Nation Forum** '2030 Vision for the Energy White Paper' will be held on 24 March 2009 at KPMG Auditorium, Sydney. At this annual forum hosted by the Australian Energy Alliance, leaders of Australia's energy organisations and key representatives of the energy industry present a critical insight into the state of the Australian energy industry and its future outlook. The 2009 Forum has been broadened to include a presentation and break-out sessions on the Discussion Papers that have been prepared by the Department of Resources Energy and Tourism as part of the Energy White Paper process, providing a valuable opportunity for industry to contribute.

For more information, contact The Meetings Manager at [meetings@tmm.com.au](mailto:meetings@tmm.com.au), call 02 9810 7322 or visit [www.tmm.com.au](http://www.tmm.com.au).

5 – 6 May 2009

The tenth annual **TechCon Asia-Pacific** will be held on Tuesday 5 and Wednesday 6 May 2009 at the Sydney Convention and Exhibition Centre. TechCon Asia Pacific is a forum for the discussion of technology development and solutions which provide improvement in key high voltage asset management strategies. A technical exhibition will display the products and services of leading providers in the Asia-Pacific region.

For further information, please contact the event co-ordinator by telephoning 03 8544 2301, by emailing [fareesha.wijesinghe@wtc.com.au](mailto:fareesha.wijesinghe@wtc.com.au) or visiting the event website at [www.tjh2b.com](http://www.tjh2b.com).

## Jobs on Offer

### List industry jobs

esaa Full Members are invited to submit industry-related employment opportunities. This is a complimentary service. Email notices to [newseditor@esaa.com.au](mailto:newseditor@esaa.com.au) by close of business Thursday.

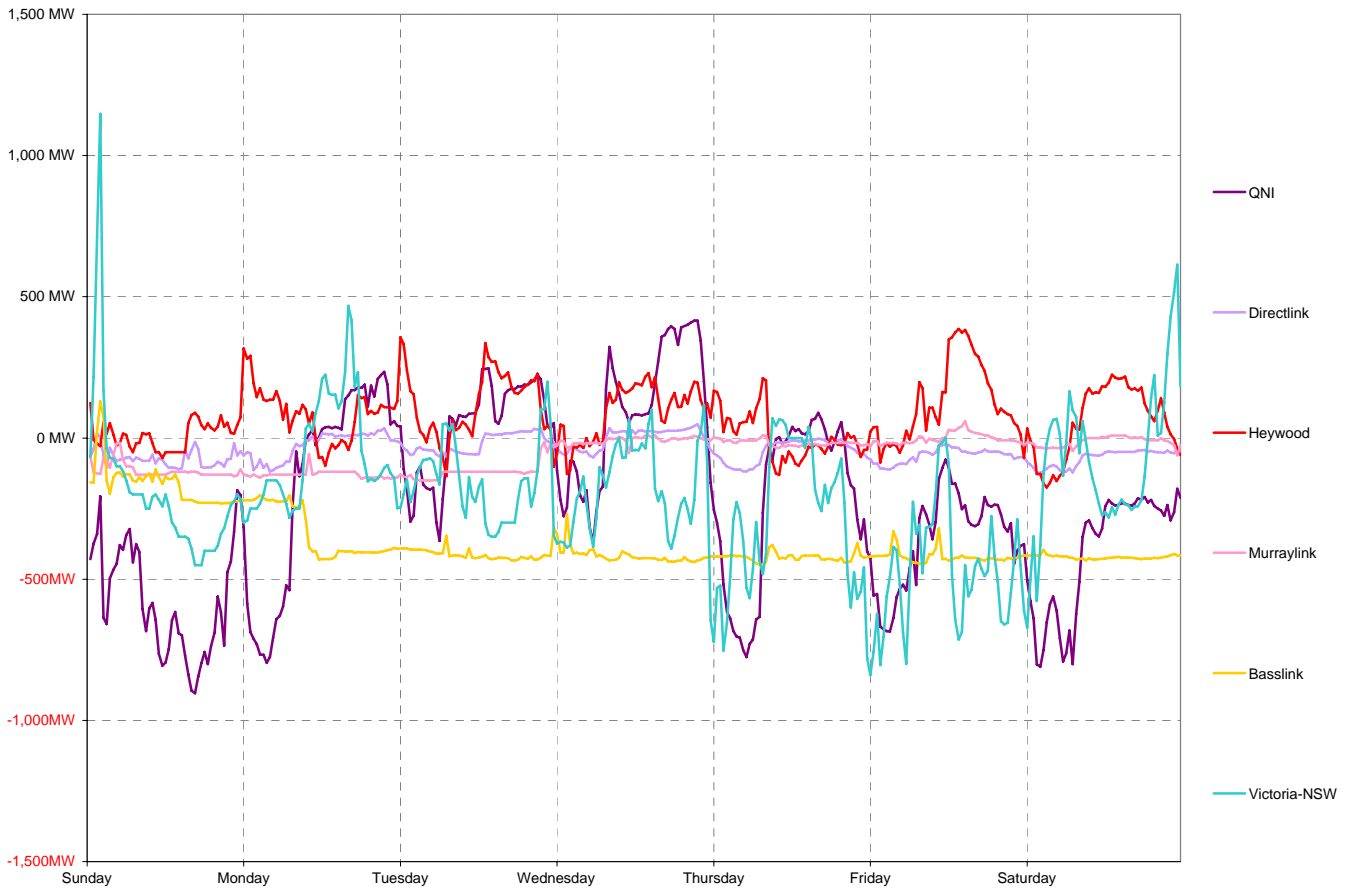
# National Electricity Market Report

Week 7 Ending Saturday 14-Feb-09

## Daily Inter-Regional Energy Flow

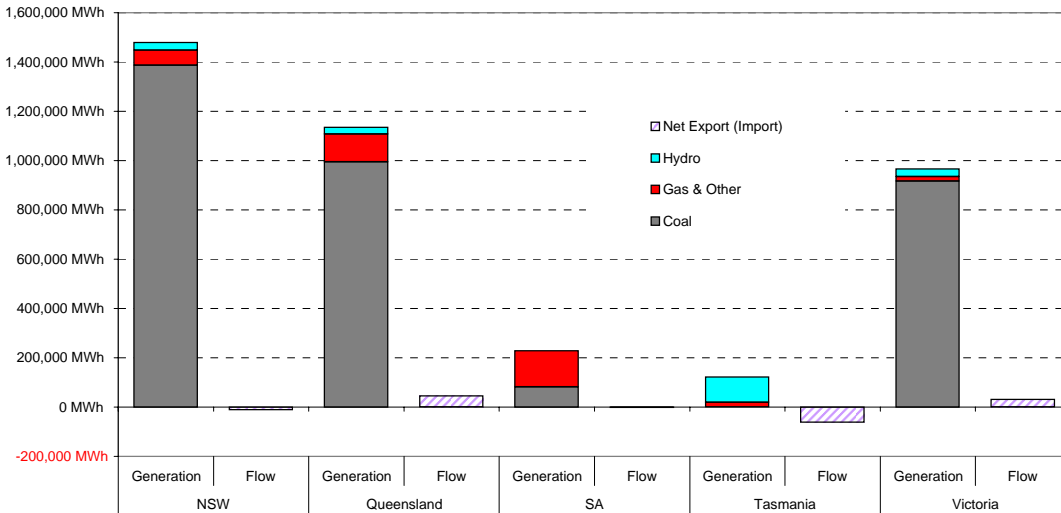
	Daily Net Exports (or Imports)							Weekly Total
	Sunday	Monday	Tuesday	Wednesday	Thursday	Friday	Saturday	
<b>For the Current Week</b>								
NSW	-10,911	-2,786	4,142	6,642	217	1,091	-9,641	-11,248
Queensland	15,482	4,133	-307	-2,114	6,634	10,112	11,190	45,129
South Australia	2,375	1,023	106	-2,195	432	-2,945	-1,076	-2,281
Tasmania	-3,938	-8,031	-9,856	-10,041	-10,130	-10,079	-10,126	-62,200
Victoria	-3,007	5,661	5,916	7,708	2,848	1,821	9,653	30,599
<b>MWh Change from Same Week Last Year</b>								
NSW	3,583	10,216	21,347	21,222	12,184	14,960	8,966	92,476
Queensland	3,685	-12,491	-19,849	-16,604	-9,309	-9,402	-10,060	-74,029
South Australia	3,316	3,021	83	-3,655	-918	-3,332	1,264	-221
Tasmania	6,125	2,191	-374	-574	-1,759	-1,419	-1,350	2,841
Victoria	-23,525	3,405	5,168	4,900	3,751	2,535	-2,660	-6,426
<b>For the Same Week Last Year</b>								
NSW	-14,494	-13,001	-17,205	-14,580	-11,968	-13,870	-18,607	-103,723
Queensland	11,797	16,624	19,542	14,490	15,943	19,514	21,250	119,158
South Australia	-942	-1,999	23	1,461	1,349	387	-2,339	-2,060
Tasmania	-10,063	-10,222	-9,483	-9,467	-8,371	-8,660	-8,776	-65,041
Victoria	20,518	2,257	748	2,808	-903	-714	12,312	37,025

## Interconnector energy flow throughout the week

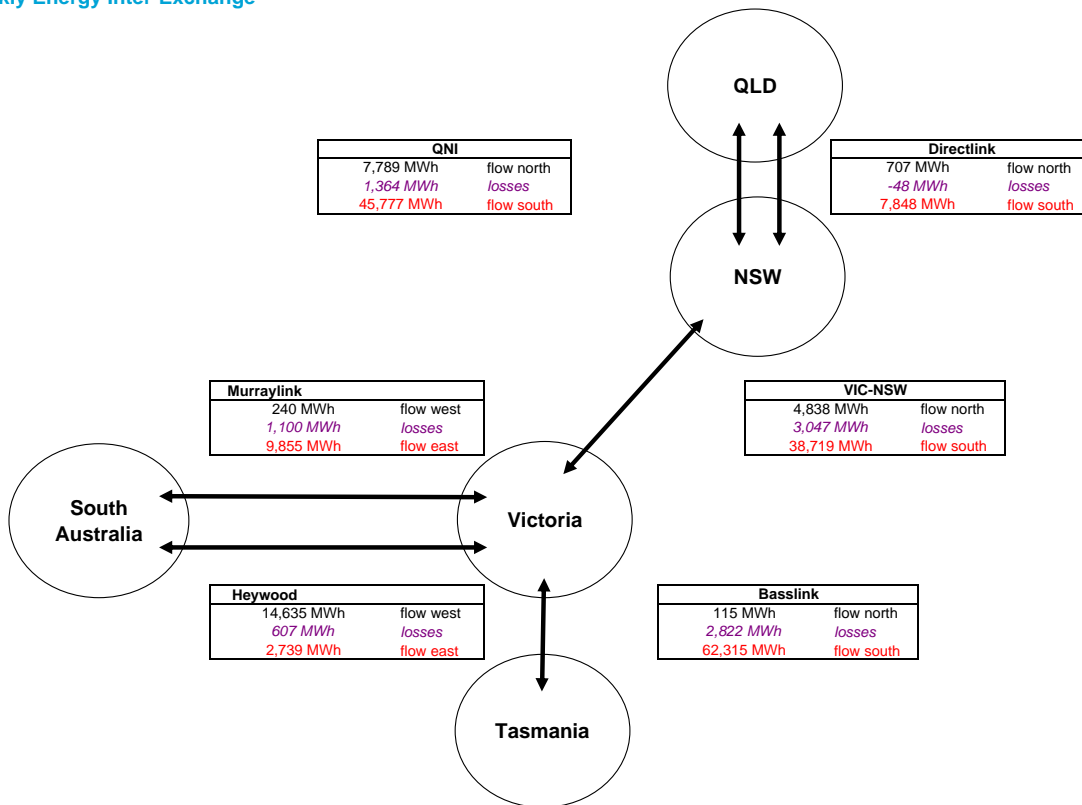


### Generation by Fuel Type

	All data in this table is shown in MWh for the week											
	NSW		Queensland		SA		Tasmania		Victoria		Whole of NEM	
	Generation	Flow	Generation	Flow	Generation	Flow	Generation	Flow	Generation	Flow	Generation	Flow
Coal	1,386,536		994,938		81,283		0		916,814		3,379,571	
Gas & Other	61,417		113,459		147,210		19,992		18,030		360,107	
Hydro	31,326		26,720		0		102,216		31,643		191,904	
Pump Storage	-8,302		-3,326		0		0		0		-11,628	
<b>Total Generation</b>	<b>1,470,977</b>		<b>1,131,790</b>		<b>228,493</b>		<b>122,208</b>		<b>966,487</b>		<b>3,919,953</b>	
Total Exports		47,215		53,625		12,594		115		82,026		
Total Imports		58,462		8,496		14,874		62,315		51,428		
<b>Net Export (Import)</b>		<b>-11,248</b>		<b>45,129</b>		<b>-2,281</b>		<b>-62,200</b>		<b>30,599</b>		
Net Consumption	1,482,224		1,086,661		230,773		184,407		935,888			

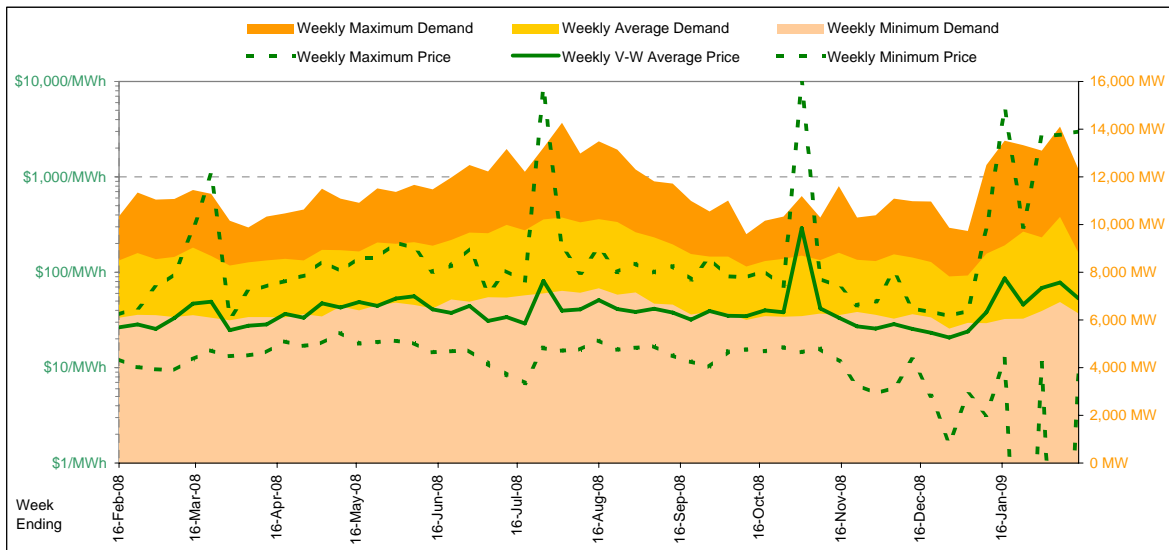


### Weekly Energy Inter-Exchange



Current Year

		Week 7 Ending Saturday			52-weeks ending Sat	
		14-Feb-09	% change	16-Feb-08	14-Feb-09	Date Occurred
Energy (MWh)	Total	1,479,615	4%	1,426,479	78,837,864	
Trading Demand (MW)	Maximum	12,310	19%	10,354	14,274	28-Aug-08
	Average	8,807	4%	8,491	9,024	
	Minimum	6,270	3%	6,097	5,632	26-Dec-08
Regional Load Factor (%)		72%		82%	63%	
Trading Price (\$/MWh)	Maximum	3006.80	8,208%	36.19	10000.00	
	Volume-Weighted Ave	53.17	101%	26.45	45.43	
	Time-Weighted Ave	47.13	83%	25.76	41.46	
	Minimum	8.93	-27%	12.27	-170.76	
Temperature °C (Sydney)	Maximum	28.6	5%	27.3	40.9	
	Minimum	16.4	12%	14.6	5.3	

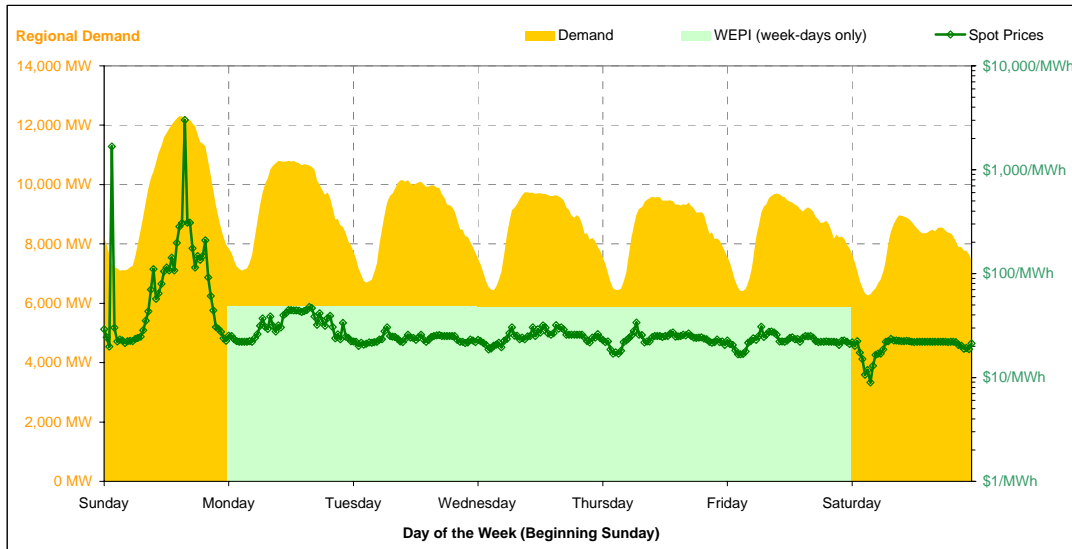


Note that prices below \$1/MWh have been reset to \$1/MWh for the purposes of this display

Current Week

All Data in this table is shown in MWh								
	Weekly Total	Sunday	Monday	Tuesday	Wednesday	Thursday	Friday	Saturday
<b>Total Production by Generation Company</b>								
Babcock & Brown Power	22,852	3,480	3,440	3,423	2,249	3,408	3,428	3,425
Delta Electricity	520,054	69,525	77,184	79,185	77,276	70,202	75,141	71,542
Eraring Energy	286,577	39,749	35,410	42,110	45,253	43,129	42,328	38,600
Macquarie Generation	558,802	88,033	91,865	79,737	78,464	79,603	77,201	63,901
Marubeni	20,013	1,920	3,244	3,230	3,236	3,234	3,230	1,920
Snowy Hydro (NSW)	29,578	12,138	7,032	2,999	4,578	1,741	568	524
TRUenergy	32,748	6,945	6,983	6,535	4,643	4,580	3,064	0
Origin Energy	8,656	3,997	0	2,439	0	675	754	792
Other NSW Plants	0	0	0	0	0	0	0	0
<b>Total internal production</b>	<b>1,479,279</b>	<b>225,785</b>	<b>225,156</b>	<b>219,656</b>	<b>215,697</b>	<b>206,571</b>	<b>205,712</b>	<b>180,703</b>
(Load at Pumped Storage)	-8,302	-891	-2,687	-1,639	-1,630	-746	-230	-480
<b>Net internal production</b>	<b>1,470,977</b>	<b>224,894</b>	<b>222,470</b>	<b>218,018</b>	<b>214,067</b>	<b>205,825</b>	<b>205,482</b>	<b>180,223</b>
<b>Percentage each company's production represents of the total internal production</b>								
Babcock & Brown Power	1.5%	1.5%	1.5%	1.6%	1.0%	1.6%	1.7%	1.9%
Delta Electricity	35.2%	30.8%	34.3%	36.0%	35.8%	34.0%	36.5%	39.6%
Eraring Energy	19.4%	17.6%	15.7%	19.2%	21.0%	20.9%	20.6%	21.4%
Macquarie Generation	37.8%	39.0%	40.8%	36.3%	36.4%	38.5%	37.5%	35.4%
Marubeni	1.4%	0.9%	1.4%	1.5%	1.5%	1.6%	1.6%	1.1%
Snowy Hydro (NSW)	2.0%	5.4%	3.1%	1.4%	2.1%	0.8%	0.3%	0.3%
TRUenergy	2.2%	3.1%	3.1%	3.0%	2.2%	2.2%	1.5%	0.0%
Origin Energy	0.6%	1.8%	0.0%	1.1%	0.0%	0.3%	0.4%	0.4%
Other NSW Plants	0.0%	0.0%	0.0%	0.0%	0.0%	0.0%	0.0%	0.0%
<b>Total Percentage</b>	<b>100.0%</b>	<b>100.0%</b>	<b>100.0%</b>	<b>100.0%</b>	<b>100.0%</b>	<b>100.0%</b>	<b>100.0%</b>	<b>100.0%</b>

Current Week (continued)



	Sunday	Monday	Tuesday	Wednesday	Thursday	Friday	Saturday
<b>For the Current Week</b>							
Total Energy (MWh)	235,422	225,003	213,627	207,019	205,155	203,740	189,651
Trading Demand Target (MW)	Maximum	12,310	10,800	10,149	9,740	9,588	8,962
	Average	9,809	9,375	8,901	8,626	8,548	8,489
	Minimum	7,094	7,101	6,699	6,436	6,448	6,421
Regional Load Factor (%)	80%	87%	88%	89%	89%	88%	88%
Wholesale Electricity Price Index (WEPI)	N/A	48.47	48.10	47.62	47.32	47.26	N/A
	Maximum	3006.80	47.85	30.44	31.83	33.76	30.78
	Volume-Weighted Ave	201.18	33.48	23.68	25.38	23.80	23.00
	Time-Weighted Ave	182.28	32.48	23.53	25.05	23.55	22.75
Trading Price (\$/MWh)	Minimum	19.85	22.00	20.06	18.63	17.00	16.67
	Maximum	28.6	22.5	19.4	23.0	22.0	20.4
Temperature °C (Sydney)	Minimum	21.4	20.9	17.9	16.7	17.5	16.4
	Maximum	21.4	20.9	17.9	16.7	17.5	16.4
<b>Percentage Change from Same Week Last Year</b>							
Total Energy (MWh)	29%	8%	-1%	-1%	-3%	-3%	-0%
Trading Demand Target (MW)	Maximum	46%	8%	-2%	-2%	-3%	-3%
	Average	29%	8%	-1%	-1%	-3%	-0%
	Minimum	16%	14%	2%	-1%	-2%	-2%
Wholesale Electricity Price Index (WEPI)	N/A	8%	7%	10%	9%	10%	N/A
	Maximum	10,934%	44%	-16%	-6%	4%	-26%
	Volume-Weighted Ave	771%	20%	-16%	-7%	-13%	-11%
	Time-Weighted Ave	699%	20%	-14%	-6%	-12%	-11%
Trading Price (\$/MWh)	Minimum	34%	79%	40%	36%	24%	33%
	Maximum	18%	-6%	-29%	1%	-9%	-16%
Temperature °C (Sydney)	Minimum	47%	27%	-5%	-9%	4%	-10%
	Maximum	47%	27%	-5%	-9%	4%	-10%
<b>For the Same Week Last Year</b>							
Total Energy (MWh)	182,012	208,389	214,896	209,758	211,273	210,045	190,107
Trading Demand Target (MW)	Maximum	8,418	10,001	10,354	9,962	9,869	9,962
	Average	7,584	8,683	8,954	8,740	8,803	8,752
	Minimum	6,097	6,225	6,583	6,473	6,556	6,539
Regional Load Factor (%)	90%	87%	86%	88%	89%	88%	88%
Wholesale Electricity Price Index (WEPI)	N/A	44.70	45.09	43.36	43.23	42.93	N/A
	Maximum	27.25	33.32	36.19	33.82	32.37	34.84
	Volume-Weighted Ave	23.10	27.81	28.22	27.41	27.36	27.31
	Time-Weighted Ave	22.82	27.07	27.49	26.78	26.76	26.61
Trading Price (\$/MWh)	Minimum	14.77	12.27	14.33	13.67	13.68	12.54
	Maximum	24.2	23.9	27.3	22.8	24.3	24.4
Temperature °C (Sydney)	Minimum	14.6	16.4	18.9	18.4	16.9	18.3
	Maximum	14.6	16.4	18.9	18.4	16.9	18.3

Long-Term Trends

This table contains electricity futures pricing, supplied by d-cyphatrade. All data other than flat and peak quarterly pricing is implied.

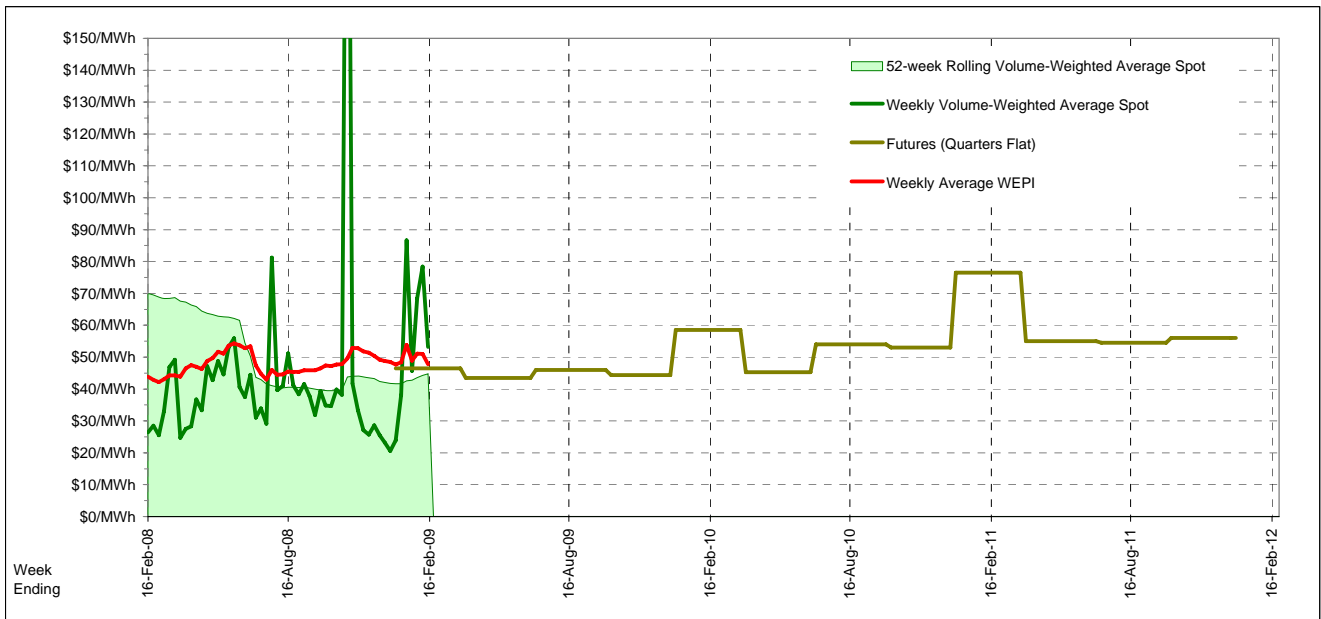
Futures settlement prices for flat load (all times)		CalYear	FinYear Ending	Q1	Q2	Q3	Q4
		2009	45.08	46.50	43.50	46.00	44.35
		2010	52.68	48.48	58.50	45.25	53.00
		2011	60.44	59.56	76.55	55.00	56.00
		2012					

Futures settlement prices for peak load (7am-10pm M-F)		CalYear	FinYear Ending	Q1	Q2	Q3	Q4
		2009	66.92	75.00	63.00	65.00	64.85
		2010	79.65	72.71	95.50	66.00	79.00
		2011	55.51	71.53	78.25	50.00	43.00
		2012					

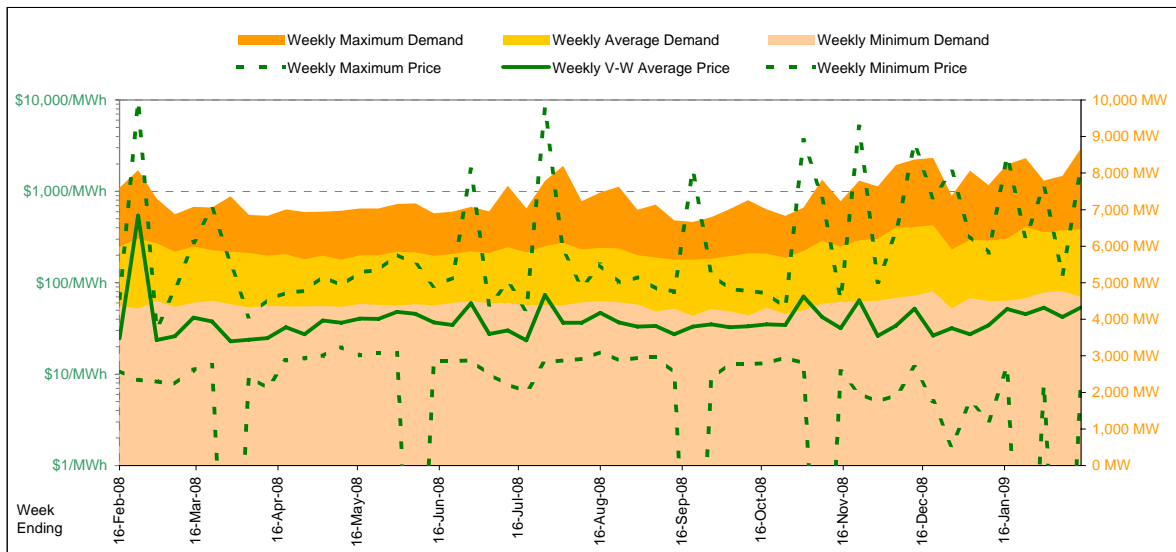
  

Implied Prices for Off-Peak Load (All other times)		CalYear	FinYear Ending	Q1	Q2	Q3	Q4
		2009	27.47	23.52	27.77	30.68	27.82
		2010	30.93	28.94	28.66	34.65	32.03
		2011	64.42	49.91	75.18	59.03	66.48
		2012					



Current Year

		Week 7 Ending Saturday			52-Weeks Ending Sat	
		14-Feb-09	% change	16-Feb-08	14-Feb-09	Date Occurred
Energy (MWh)	Total	1,086,072	8%	1,006,581	52,061,195	
Trading Demand (MW)	Maximum	8,677	14%	7,605	8,677	9-Feb-09
	Average	6,465	8%	5,992	5,959	
	Minimum	4,613	5%	4,375	4,100	20-Sep-08
Regional Load Factor (%)		75%		79%	69%	
Trading Price (\$/MWh)	Maximum	1833.64	2,595%	68.04	9561.42	
	Volume-Weighted Ave	53.95	120%	24.55	48.24	
	Time-Weighted Ave	49.61	109%	23.77	43.42	
	Minimum	8.22	-24%	10.87	-180.89	
Temperature °C (Brisbane)	Maximum	36.1	17%	30.9	40.2	
	Minimum	20.1	9%	18.5	3.7	

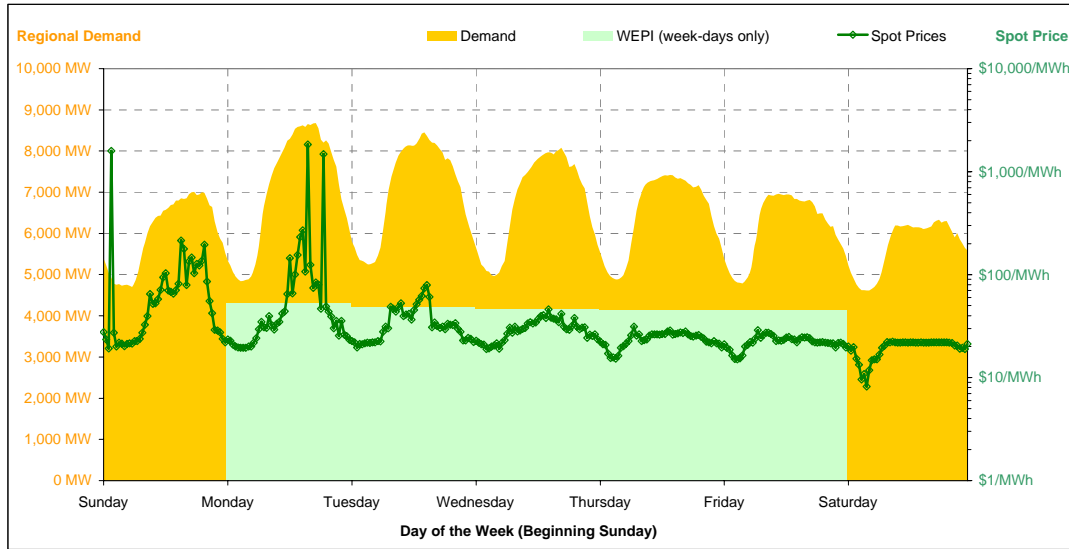


Note that prices below \$1/MWh have been reset to \$1/MWh for the purposes of this display

Current Week

All Data in this table is shown in MWh								
	Weekly Total	Sunday	Monday	Tuesday	Wednesday	Thursday	Friday	Saturday
<b>Total Production by Generation Company</b>								
AGL	23,314	1,474	4,522	4,510	3,778	3,360	3,360	2,311
Babcock & Brown Power	36,447	5,134	5,806	5,094	4,740	4,681	5,647	5,347
Callide Power Trading	123,387	14,218	19,707	19,376	18,246	18,101	17,723	16,018
CS Energy	302,094	42,679	44,269	44,477	42,868	44,572	41,909	41,321
Millmerran Energy Trader	72,754	10,432	10,151	10,433	10,430	10,437	10,439	10,434
Origin Energy	6,452	728	1,604	1,110	749	749	754	759
Stanwell	342,761	54,283	54,935	52,934	49,443	47,064	44,094	40,010
Tarong Energy	167,930	22,408	24,423	25,402	24,708	23,704	24,113	23,174
Tarong North Trader	59,861	8,637	8,753	7,244	7,426	9,678	9,843	8,281
Other QLD Plants	117	0	117	0	0	0	0	0
<b>Total internal production</b>	<b>1,135,116</b>	<b>159,992</b>	<b>174,285</b>	<b>170,577</b>	<b>162,385</b>	<b>162,344</b>	<b>157,881</b>	<b>147,653</b>
(Load at Pumped Storage)	-3,326	-164	0	-1,581	-1,581	0	0	0
<b>Net internal production</b>	<b>1,131,790</b>	<b>159,828</b>	<b>174,285</b>	<b>168,996</b>	<b>160,804</b>	<b>162,344</b>	<b>157,881</b>	<b>147,653</b>
<b>Percentage each company's production represents of the total internal production</b>								
AGL	2.1%	0.9%	2.6%	2.6%	2.3%	2.1%	2.1%	1.6%
Babcock & Brown Power	3.2%	3.2%	3.3%	3.0%	2.9%	2.9%	3.6%	3.6%
Callide Power Trading	10.9%	8.9%	11.3%	11.4%	11.2%	11.1%	11.2%	10.8%
CS Energy	26.6%	26.7%	25.4%	26.1%	26.4%	27.5%	26.5%	28.0%
Millmerran Energy Trader	6.4%	6.5%	5.8%	6.1%	6.4%	6.4%	6.6%	7.1%
Origin Energy	0.6%	0.5%	0.9%	0.7%	0.5%	0.5%	0.5%	0.5%
Stanwell	30.2%	33.9%	31.5%	31.0%	30.4%	29.0%	27.9%	27.1%
Tarong Energy	14.8%	14.0%	14.0%	14.9%	15.2%	14.6%	15.3%	15.7%
Tarong North Trader	5.3%	5.4%	5.0%	4.2%	4.6%	6.0%	6.2%	5.6%
Other QLD Plants	0.0%	0.0%	0.1%	0.0%	0.0%	0.0%	0.0%	0.0%
<b>Total Percentage</b>	<b>100.0%</b>	<b>100.0%</b>	<b>100.0%</b>	<b>100.0%</b>	<b>100.0%</b>	<b>100.0%</b>	<b>100.0%</b>	<b>100.0%</b>

Current Week (continued)



	Sunday	Monday	Tuesday	Wednesday	Thursday	Friday	Saturday
<b>For the Current Week</b>							
Total Energy (MWh)	144,216	170,033	169,234	162,773	155,658	147,756	136,404
Trading Demand Target (MW)	Maximum	7,007	8,677	8,450	8,080	7,418	6,330
	Average	6,009	7,085	7,051	6,782	6,486	6,157
	Minimum	4,701	4,843	5,252	4,962	4,885	4,784
Regional Load Factor (%)	86%	82%	83%	84%	87%	88%	90%
Wholesale Electricity Price Index (WEPI)	N/A	53.43	47.89	46.82	45.79	45.22	N/A
	Maximum	1593.85	1833.64	79.29	45.91	31.18	28.96
	Volume-Weighted Ave	95.48	140.42	36.58	30.49	24.10	22.50
Trading Price (\$/MWh)	Time-Weighted Ave	96.07	121.39	34.85	29.51	23.67	22.19
	Minimum	19.19	19.48	19.62	18.96	15.28	15.03
	Maximum	30.8	36.1	32.3	31.5	28.0	23.5
Temperature °C (Brisbane)	Maximum	20.2	20.5	24.4	23.3	21.7	20.6
	Minimum						
<b>Percentage Change from Same Week Last Year</b>							
Total Energy (MWh)	5%	15%	15%	6%	5%	4%	5%
Trading Demand Target (MW)	Maximum	8%	22%	21%	6%	5%	2%
	Average	5%	15%	15%	6%	5%	4%
	Minimum	2%	6%	15%	7%	5%	6%
Wholesale Electricity Price Index (WEPI)	N/A	17%	5%	2%	1%	1%	N/A
	Maximum	6,102%	5,621%	126%	-33%	1%	-15%
	Volume-Weighted Ave	335%	449%	43%	12%	-5%	-9%
Trading Price (\$/MWh)	Time-Weighted Ave	344%	388%	40%	13%	-4%	-7%
	Minimum	36%	70%	61%	53%	29%	38%
	Maximum	8%	31%	21%	2%	2%	-16%
Temperature °C (Brisbane)	Maximum	6%	3%	10%	9%	-6%	11%
	Minimum						
<b>For the Same Week Last Year</b>							
Total Energy (MWh)	137,347	147,867	146,961	153,790	147,877	142,417	130,324
Trading Demand Target (MW)	Maximum	6,504	7,089	6,988	7,605	7,068	6,839
	Average	5,723	6,161	6,123	6,408	6,162	5,934
	Minimum	4,629	4,557	4,575	4,616	4,636	4,505
Regional Load Factor (%)	88%	87%	88%	84%	87%	87%	89%
Wholesale Electricity Price Index (WEPI)	N/A	45.64	45.64	45.96	45.34	44.65	N/A
	Maximum	25.70	32.05	35.14	68.04	30.74	34.03
	Volume-Weighted Ave	21.97	25.57	25.57	27.34	25.50	24.72
Trading Price (\$/MWh)	Time-Weighted Ave	21.66	24.88	24.82	26.21	24.78	23.96
	Minimum	14.08	11.43	12.21	12.36	11.83	10.87
	Maximum	28.4	27.5	26.7	30.9	27.4	27.9
Temperature °C (Brisbane)	Maximum	19.0	20.0	22.1	21.3	23.1	18.5
	Minimum						

Long-Term Trends

This table contains electricity futures pricing, supplied by d-cyphatrade. All data other than flat and peak quarterly pricing is implied.

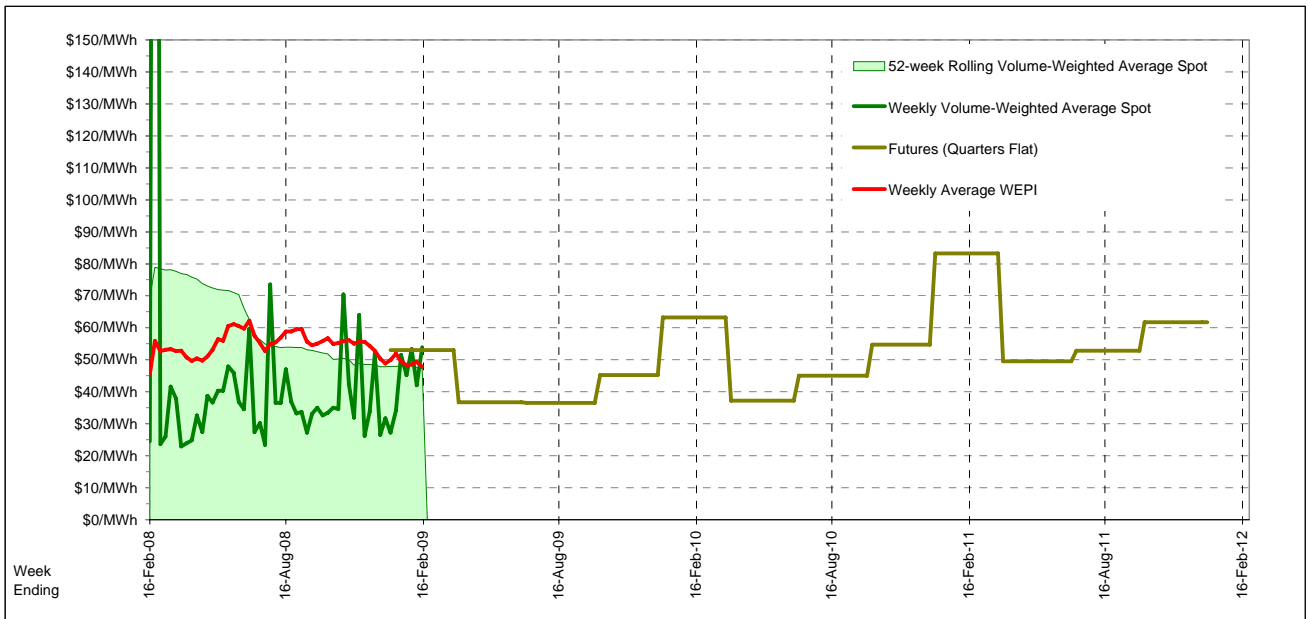
<b>Futures settlement prices</b> for flat load (all times)	CalYear	FinYear Ending	Q1	Q2	Q3	Q4
	2009	42.84	53.00	36.75	36.55	45.20
	2010	50.03	63.25	37.25	45.00	54.75
	2011	61.75	83.25	49.55	52.80	61.75
	2012					

<b>Futures settlement prices</b> for peak load (7am-10pm M-F)	CalYear	FinYear Ending	Q1	Q2	Q3	Q4
	2009	63.46	84.00	51.00	48.40	70.75
	2010	71.53	105.00	49.00	56.00	76.00
	2011	86.14	140.00	60.00	60.00	85.00
	2012					

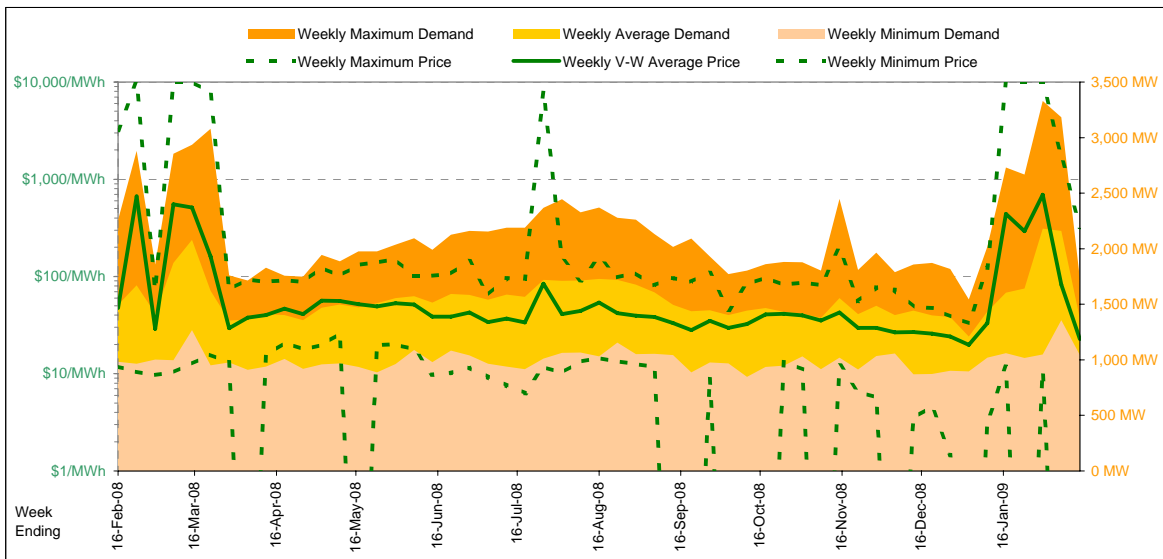
  

<b>Implied Prices</b> for Off-Peak Load (All other times)	CalYear	FinYear Ending	Q1	Q2	Q3	Q4
	2009	26.21	28.00	25.26	26.99	24.60
	2010	32.69	29.58	27.77	36.13	37.61
	2011	42.08	37.48	41.12	46.99	43.00
	2012					



Current Year

		Week 7 Ending Saturday		52-Weeks Ending Sat		
		14-Feb-09	% change	16-Feb-08	14-Feb-09	Date Occurred
Energy (MWh)	Total	230,282	-8%	251,315	13,522,389	
	Maximum	1,732	-23%	2,258	3,331	28-Jan-09
	Average	1,371	-8%	1,496	1,548	
Trading Demand (MW)	Maximum	1,042	6%	983	847	11-Oct-08
	Minimum	79%		66%	46%	
Regional Load Factor (%)						
Trading Price (\$/MWh)	Maximum	319.76	-90%	3188.63	9999.92	
	Volume-Weighted Ave	22.76	-52%	47.49	111.08	
	Time-Weighted Ave	21.21	-48%	41.15	76.07	
	Minimum	-663.17	-5,711%	11.82	-1000.00	
Temperature °C (Adelaide)	Maximum	31.3	-16%	37.4	45.7	
	Minimum	12.5	-3%	12.9	0.7	

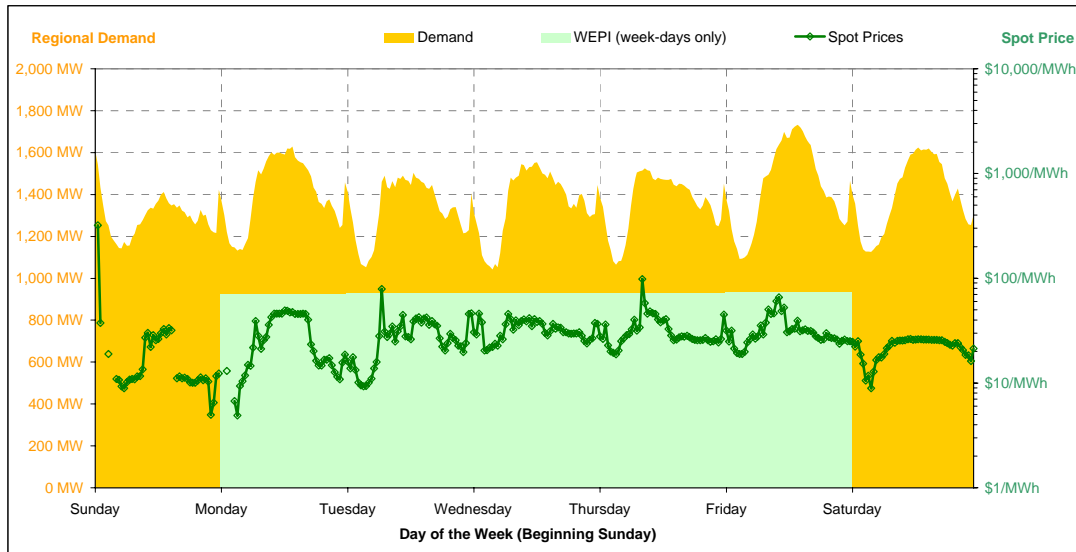


Note that prices below \$1/MWh have been reset to \$1/MWh for the purposes of this display

Current Week

All Data in this table is shown in MWh								
	Weekly Total	Sunday	Monday	Tuesday	Wednesday	Thursday	Friday	Saturday
<b>Total Production by Generation Company</b>								
AGL	38,097	4,848	6,386	5,594	5,237	5,847	5,790	4,396
International Power (Pelican Point)	64,631	8,733	9,222	9,464	9,729	9,493	9,421	8,570
International Power (Synergen)	0	0	0	0	0	0	0	0
Flinders Power	88,462	14,704	14,468	12,074	9,868	11,410	11,342	14,597
Origin Energy	2,596	878	0	37	248	1,153	281	0
Osborne	22,818	2,995	3,132	3,330	3,517	3,393	3,382	3,070
TRUenergy	1	1	0	0	0	0	0	0
Other SA Plants	11,889	1,428	1,807	1,820	1,925	1,843	1,311	1,756
<b>Total internal production</b>	<b>228,493</b>	<b>33,586</b>	<b>35,014</b>	<b>32,319</b>	<b>30,524</b>	<b>33,138</b>	<b>31,526</b>	<b>32,388</b>
(Load at Pumped Storage)	0	0	0	0	0	0	0	0
<b>Net internal production</b>	<b>228,493</b>	<b>33,586</b>	<b>35,014</b>	<b>32,319</b>	<b>30,524</b>	<b>33,138</b>	<b>31,526</b>	<b>32,388</b>
<b>Percentage each company's production represents of the total internal production</b>								
AGL	16.7%	14.4%	18.2%	17.3%	17.2%	17.6%	18.4%	13.6%
International Power (Pelican Point)	28.3%	26.0%	26.3%	29.3%	31.9%	28.6%	29.9%	26.5%
International Power (Synergen)	0.0%	0.0%	0.0%	0.0%	0.0%	0.0%	0.0%	0.0%
Flinders Power	38.7%	43.8%	41.3%	37.4%	32.3%	34.4%	36.0%	45.1%
Origin Energy	1.1%	2.6%	0.0%	0.1%	0.8%	3.5%	0.9%	0.0%
Osborne	10.0%	8.9%	8.9%	10.3%	11.5%	10.2%	10.7%	9.5%
TRUenergy	0.0%	0.0%	0.0%	0.0%	0.0%	0.0%	0.0%	0.0%
Other SA Plants	5.2%	4.3%	5.2%	5.6%	6.3%	5.6%	4.2%	5.4%
<b>Total Percentage</b>	<b>100.0%</b>	<b>100.0%</b>	<b>100.0%</b>	<b>100.0%</b>	<b>100.0%</b>	<b>100.0%</b>	<b>100.0%</b>	<b>100.0%</b>

Current Week (continued)



	Sunday	Monday	Tuesday	Wednesday	Thursday	Friday	Saturday
<b>For the Current Week</b>							
Total Energy (MWh)	31,115	33,849	32,076	32,688	32,695	34,415	33,445
Trading Demand Target (MW)	Maximum	1,608	1,629	1,504	1,554	1,525	1,732
	Average	1,296	1,410	1,337	1,362	1,362	1,434
	Minimum	1,143	1,132	1,052	1,042	1,065	1,092
Regional Load Factor (%)	81%	87%	89%	88%	89%	83%	86%
Wholesale Electricity Price Index (WEPI)	N/A	70.24	71.97	72.69	72.40	73.40	N/A
	Maximum	319.76	49.15	79.26	45.96	98.16	65.72
	Volume-Weighted Ave	-2.99	11.32	28.95	32.80	32.92	32.47
Trading Price (\$/MWh)	Time-Weighted Ave	-4.65	6.80	28.01	32.32	32.22	31.61
	Minimum	-324.20	-663.17	9.32	20.52	18.76	18.94
	Maximum	24.8	23.3	21.1	21.3	23.8	28.8
Temperature °C (Adelaide)	Minimum	18.6	14.7	13.7	13.2	12.5	18.3
<b>Percentage Change from Same Week Last Year</b>							
Total Energy (MWh)	8%	-9%	-11%	-3%	-8%	-13%	-18%
Trading Demand Target (MW)	Maximum	17%	-15%	-18%	-1%	-11%	-28%
	Average	8%	-9%	-11%	-3%	-8%	-13%
	Minimum	16%	5%	-8%	-4%	-4%	-4%
Wholesale Electricity Price Index (WEPI)	N/A	-0%	5%	12%	7%	3%	N/A
Trading Price (\$/MWh)	Maximum	1,009%	-13%	94%	22%	154%	-98%
	Volume-Weighted Ave	-113%	-67%	-9%	13%	12%	-73%
	Time-Weighted Ave	-120%	-79%	-9%	14%	12%	-68%
Temperature °C (Adelaide)	Minimum	-2,334%	-5,711%	-40%	53%	39%	52%
	Maximum	-3%	-19%	-21%	-10%	-14%	-13%
	Minimum	32%	3%	-9%	2%	-7%	-6%
<b>For the Same Week Last Year</b>							
Total Energy (MWh)	28,780	37,334	36,070	33,579	35,418	39,518	40,617
Trading Demand Target (MW)	Maximum	1,376	1,924	1,826	1,568	1,713	2,119
	Average	1,199	1,556	1,503	1,399	1,476	1,647
	Minimum	983	1,075	1,140	1,086	1,109	1,136
Regional Load Factor (%)	87%	81%	82%	89%	86%	78%	75%
Wholesale Electricity Price Index (WEPI)	N/A	70.27	68.80	65.17	67.49	70.94	N/A
	Maximum	28.83	56.64	40.88	37.57	38.72	3188.63
	Volume-Weighted Ave	23.33	33.93	31.68	28.99	29.45	119.87
Trading Price (\$/MWh)	Time-Weighted Ave	23.06	32.41	30.64	28.43	28.79	99.75
	Minimum	14.51	11.82	15.48	13.38	13.52	12.47
	Maximum	25.6	28.9	26.7	23.6	27.6	33.2
Temperature °C (Adelaide)	Minimum	14.1	14.3	15.1	12.9	13.4	16.2

Long-Term Trends

This table contains electricity futures pricing, supplied by d-cyphatrade. All data other than flat and peak quarterly pricing is implied.

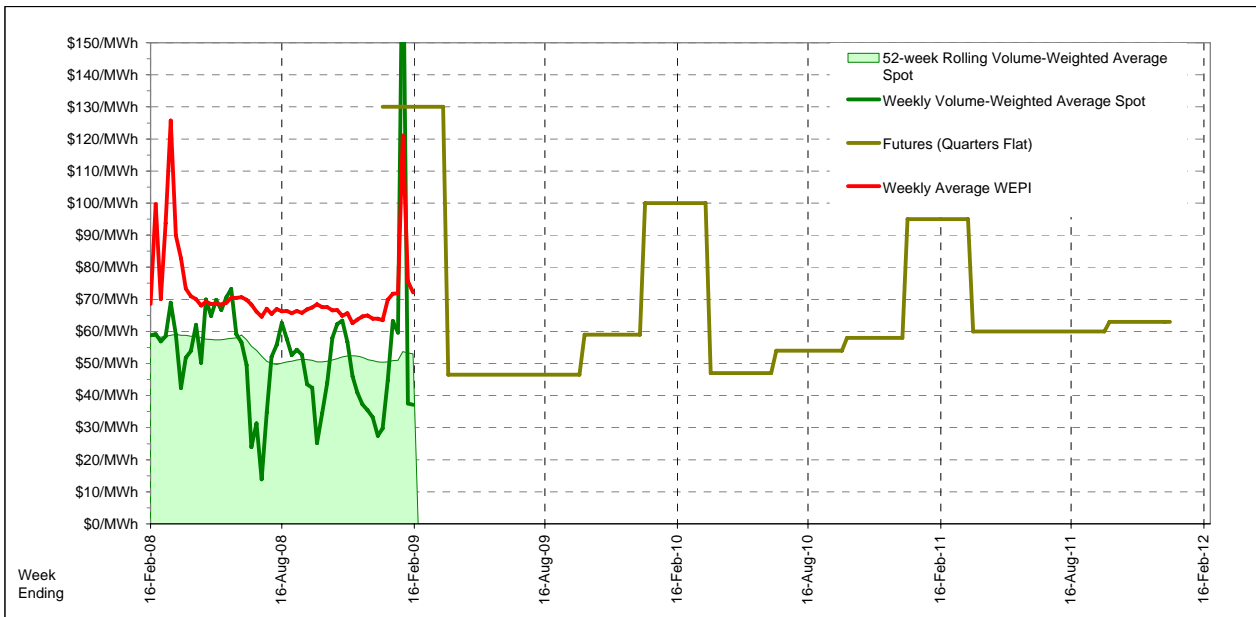
Futures settlement prices for flat load (all times)		CalYear	FinYear Ending	Q1	Q2	Q3	Q4
		2009	70.24	130.00	46.50	46.50	59.00
		2010	64.61	62.97	100.00	47.00	58.00
		2011	69.39	66.61	95.00	60.00	63.00
		2012					

Futures settlement prices for peak load (7am-10pm M-F)		CalYear	FinYear Ending	Q1	Q2	Q3	Q4
		2009	99.12	200.00	62.00	50.70	86.50
		2010	78.02	75.30	102.00	63.00	74.00
		2011	55.88	70.94	100.00	36.50	42.75
		2012					

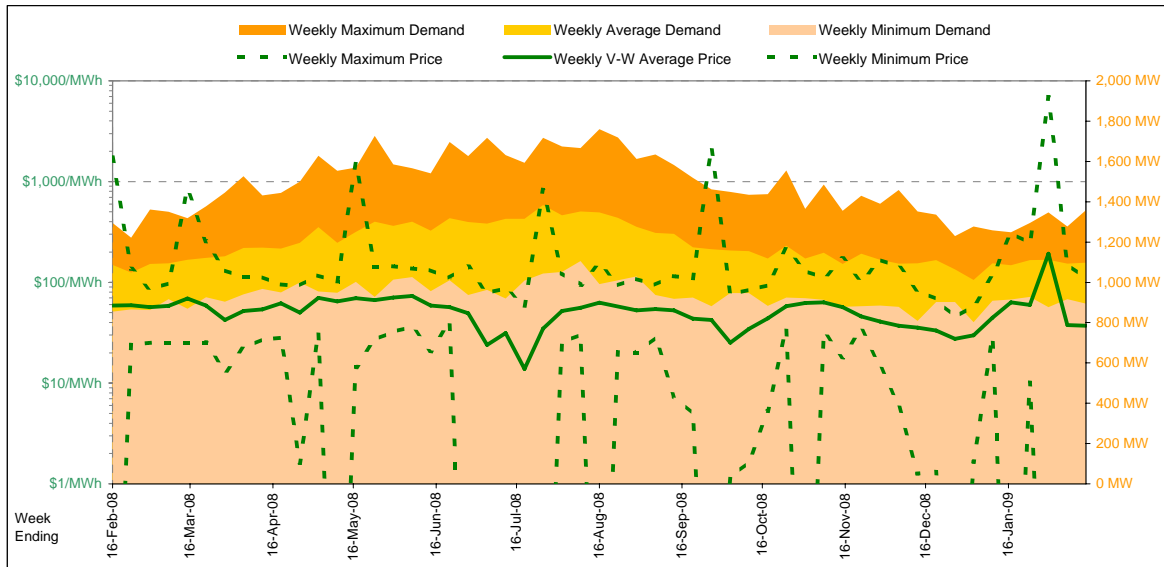
  

Implied Prices for Off-Peak Load (All other times)		CalYear	FinYear Ending	Q1	Q2	Q3	Q4
		2009	46.95	73.55	34.00	43.11	36.82
		2010	53.80	53.03	98.39	34.10	38.68
		2011	80.29	63.12	90.97	78.95	73.91
		2012					



Current Year

		Week 7 Ending Saturday			52-Weeks Ending Sat	
		14-Feb-09	% change	16-Feb-08	14-Feb-09	Date Occurred
Energy (MWh)	Total	184,379	1%	182,618	10,371,829	
	Maximum	1,358	5%	1,294	1,760	11-Aug-08
	Average	1,097	1%	1,087	1,187	
Trading Demand (MW)	Maximum	895	5%	854	802	29-Dec-08
	Minimum	81%		84%	67%	
Regional Load Factor (%)	Maximum	109.79	-94%	1735.18	6880.22	
	Volume-Weighted Ave	37.13	-37%	58.79	52.86	
	Time-Weighted Ave	34.65	-40%	57.63	51.57	
	Minimum	-920.09	-89%	-487.43	-999.76	
Trading Price (\$/MWh)	Maximum	23.3	-10%	25.8	37.3	
	Minimum	7.5	0%	7.5	0.3	

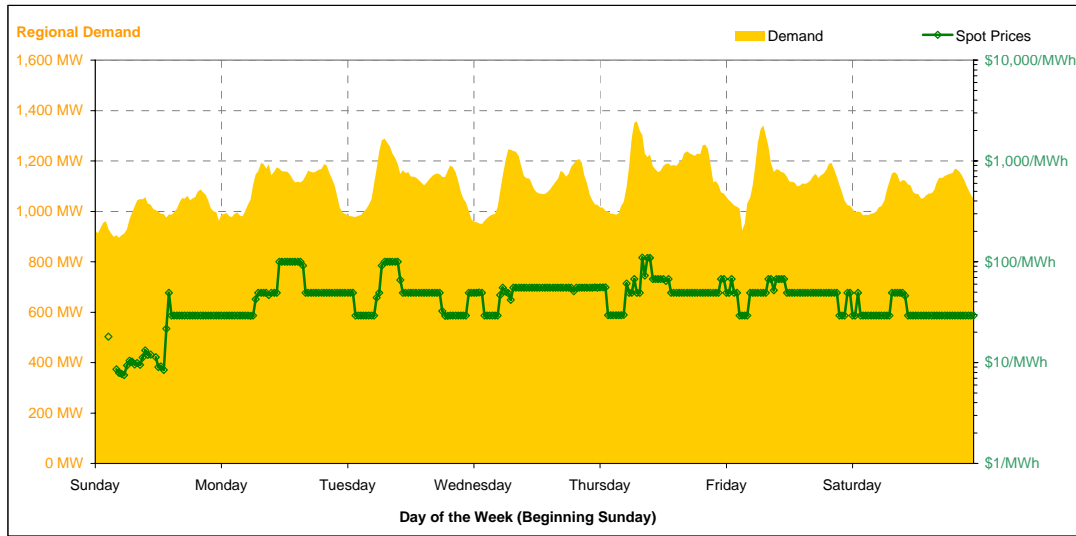


Note that prices below \$1/MWh have been reset to \$1/MWh for the purposes of this display

Current Week

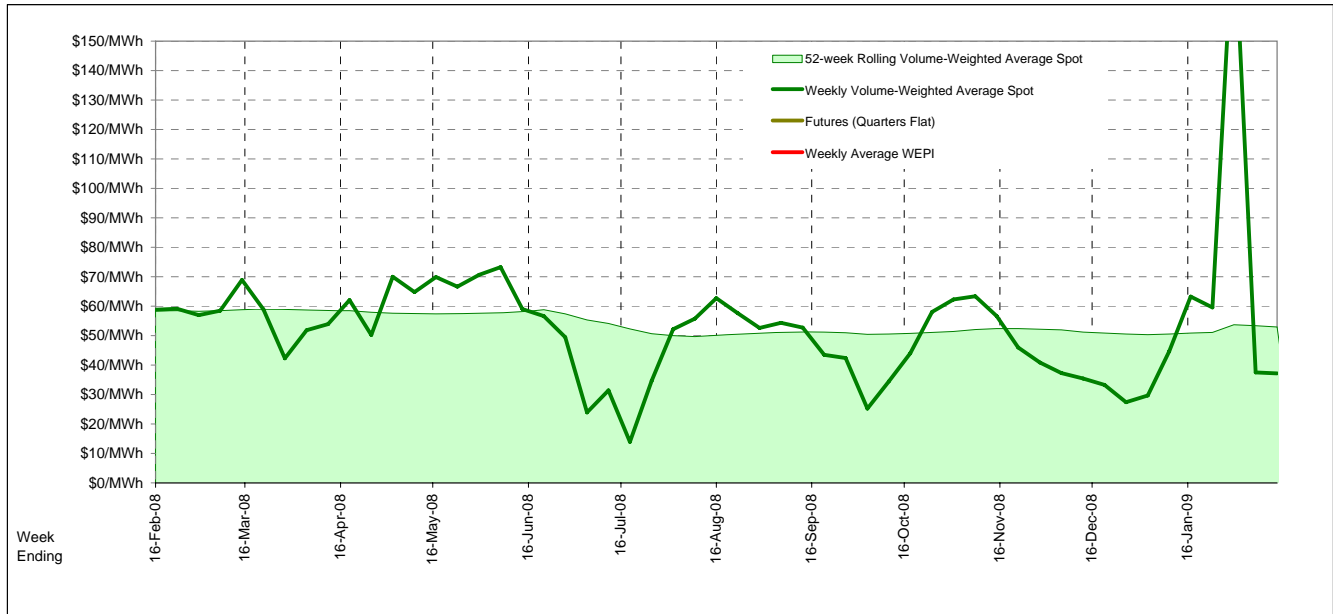
All Data in this table is shown in MWh								
Weekly Total	Sunday	Monday	Tuesday	Wednesday	Thursday	Friday	Saturday	
<b>Total Production by Generation Company</b>								
Hydro Tasmania	102,216	17,131	15,560	14,098	13,557	14,935	14,018	12,918
Bell Bay Power	19,992	2,856	2,856	2,856	2,856	2,856	2,856	2,856
Other TAS Plants	0	0	0	0	0	0	0	0
<b>Total internal production</b>	<b>122,208</b>	<b>19,987</b>	<b>18,416</b>	<b>16,954</b>	<b>16,413</b>	<b>17,791</b>	<b>16,874</b>	<b>15,774</b>
(Load at Pumped Storage)	0	0	0	0	0	0	0	0
<b>Net internal production</b>	<b>122,208</b>	<b>19,987</b>	<b>18,416</b>	<b>16,954</b>	<b>16,413</b>	<b>17,791</b>	<b>16,874</b>	<b>15,774</b>
<b>Percentage each company's production represents of the total internal production</b>								
Hydro Tasmania	83.6%	85.7%	84.5%	83.2%	82.6%	83.9%	83.1%	81.9%
Bell Bay Power	16.4%	14.3%	15.5%	16.8%	17.4%	16.1%	16.9%	18.1%
Other TAS Plants	0.0%	0.0%	0.0%	0.0%	0.0%	0.0%	0.0%	0.0%
<b>Total Percentage</b>	<b>100.0%</b>	<b>100.0%</b>	<b>100.0%</b>	<b>100.0%</b>	<b>100.0%</b>	<b>100.0%</b>	<b>100.0%</b>	<b>100.0%</b>

Current Week (continued)



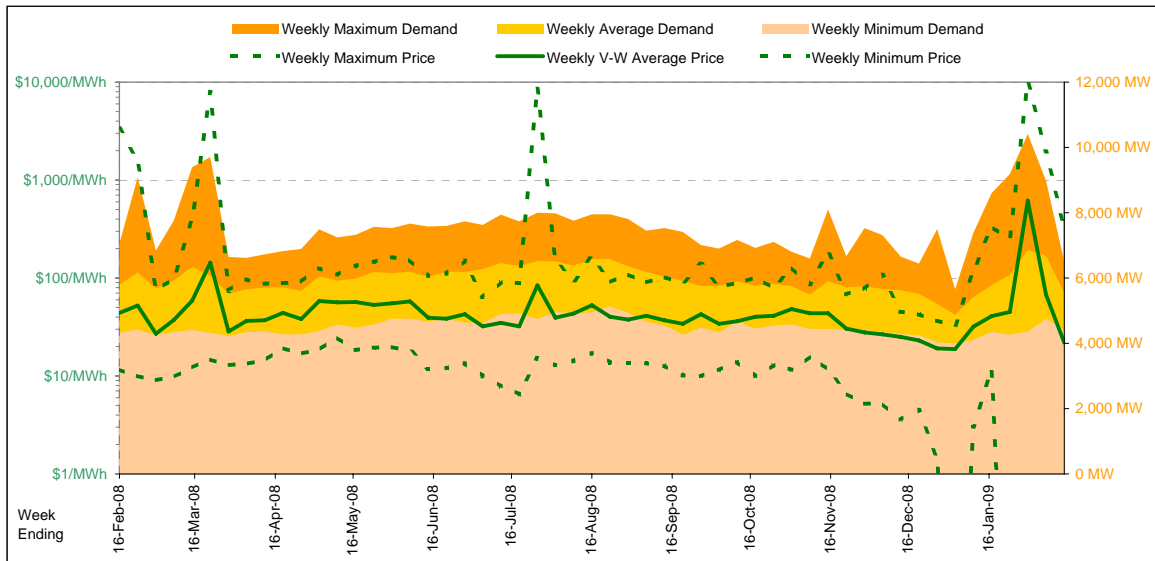
		Sunday	Monday	Tuesday	Wednesday	Thursday	Friday	Saturday
<b>For the Current Week</b>								
Total Energy (MWh)		23,919	26,442	26,805	26,451	27,917	26,949	25,897
Trading Demand Target (MW)	Maximum	1,087	1,192	1,289	1,246	1,358	1,341	1,169
	Average	997	1,102	1,117	1,102	1,163	1,123	1,079
	Minimum	895	978	969	950	987	925	984
Regional Load Factor (%)	Maximum	49.29	99.88	99.88	55.53	109.79	67.31	49.29
	Average	92%	92%	87%	88%	86%	84%	92%
Trading Price (\$/MWh)	Volume-Weighted Ave	-43.00	54.86	50.41	51.10	55.65	49.41	32.25
	Time-Weighted Ave	-47.76	54.04	49.29	50.75	54.99	49.06	32.15
	Minimum	-920.09	29.17	29.16	29.23	29.41	29.29	29.29
Temperature °C (Hobart)	Maximum	23.3	18.2	17.3	16.3	16.3	19.8	20.6
	Minimum	15.2	9.2	8.6	7.5	8.6	7.6	9.8
<b>Percentage Change from Same Week Last Year</b>								
Total Energy (MWh)		-5%	-2%	3%	4%	7%	-0%	-0%
Trading Demand Target (MW)	Maximum	-5%	-4%	5%	4%	7%	4%	-2%
	Average	-5%	-2%	3%	4%	7%	-0%	-0%
	Minimum	-5%	-1%	13%	9%	4%	-4%	3%
Trading Price (\$/MWh)	Maximum	-43%	33%	33%	-26%	105%	-96%	-76%
	Volume-Weighted Ave	-177%	-10%	-16%	6%	33%	-42%	-45%
	Time-Weighted Ave	-187%	-10%	-17%	7%	32%	-41%	-44%
Temperature °C (Hobart)	Maximum	-3,748%	16%	16%	16%	17%	106%	110%
	Minimum	8%	-29%	-20%	-12%	-26%	12%	5%
		65%	-2%	-23%	0%	-27%	-27%	-27%
<b>For the Same Week Last Year</b>								
Total Energy (MWh)		25,064	27,118	26,016	25,325	26,077	27,076	25,943
Trading Demand Target (MW)	Maximum	1,149	1,240	1,227	1,201	1,267	1,294	1,192
	Average	1,044	1,130	1,084	1,055	1,087	1,128	1,081
	Minimum	943	992	854	872	949	967	957
Regional Load Factor (%)	Maximum	91%	91%	88%	88%	86%	87%	91%
	Average	86.58	75.22	75.22	75.24	53.50	1735.18	206.14
Trading Price (\$/MWh)	Volume-Weighted Ave	56.03	61.25	59.93	48.02	41.95	84.67	58.16
	Time-Weighted Ave	55.12	60.04	59.33	47.23	41.58	83.16	56.94
	Minimum	25.22	25.22	25.22	25.20	25.22	-487.43	-304.22
Temperature °C (Hobart)	Maximum	21.5	25.8	21.7	18.6	21.9	17.7	19.6
	Minimum	9.2	9.4	11.2	7.5	11.8	10.4	13.5

Long-Term Trends



Current Year

		Week 7 Ending Saturday		52-Weeks Ending Sat		
		14-Feb-09	% change	16-Feb-08	14-Feb-09	Date Occurred
Energy (MWh)	Total	932,221	-4%	973,136	52,130,470	
Trading Demand (MW)	Maximum	6,502	-8%	7,058	10,415	29-Jan-09
	Average	5,549	-4%	5,792	5,967	
	Minimum	4,410	2%	4,333	4,004	28-Dec-08
Regional Load Factor (%)		85%		82%	57%	
Trading Price (\$/MWh)	Maximum	322.68	-90%	3369.02	10000.00	
	Volume-Weighted Ave	21.90	-50%	43.97	55.96	
	Time-Weighted Ave	20.42	-50%	40.79	47.60	
	Minimum	-496.71	-4,371%	11.63	-496.71	
Temperature °C (Melbourne)	Maximum	28.4	1%	28.0	46.4	
	Minimum	12.8	-5%	13.5	2.2	

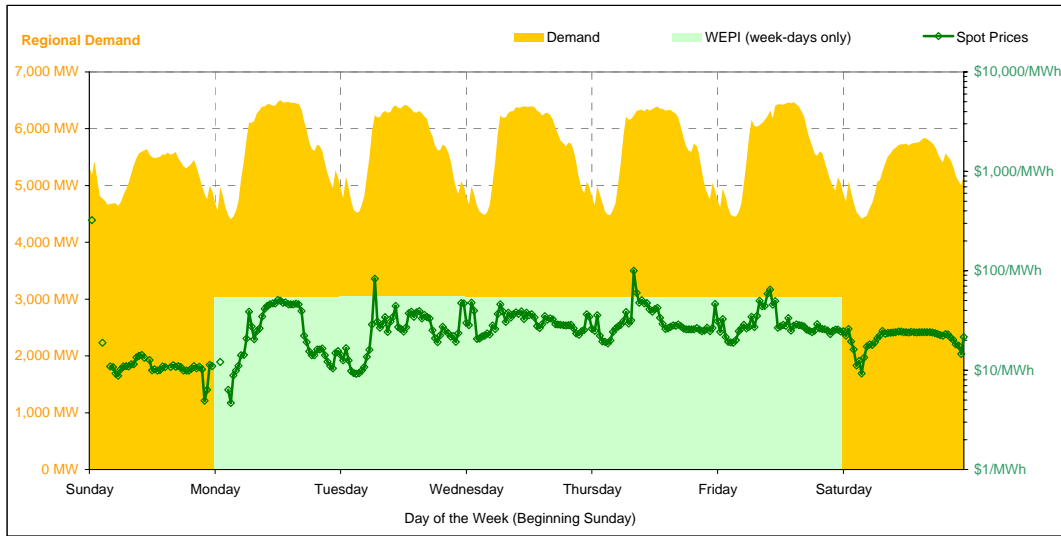


Note that prices below \$1/MWh have been reset to \$1/MWh for the purposes of this display

Current Week

All Data in this table is shown in MWh								
	Weekly Total	Sunday	Monday	Tuesday	Wednesday	Thursday	Friday	Saturday
<b>Total Production by Generation Company</b>								
AGL	2,465	383	116	548	483	226	466	244
Anglesea	26,800	3,811	3,830	3,819	3,832	3,840	3,837	3,832
Babcock & Brown Power	2,267	35	755	435	235	148	472	189
Ecogen Energy	12,770	137	386	2,739	2,410	2,682	4,408	10
Energy Brix	23,925	3,566	3,190	3,446	3,484	3,299	3,481	3,460
International Power (Hazelwood)	182,021	22,767	26,627	23,294	24,403	24,475	27,127	33,329
Loy Yang B	152,487	20,493	23,418	23,646	22,250	20,217	19,757	22,707
Loy Yang Power	308,339	36,907	45,186	48,439	47,077	42,264	42,054	46,414
Snowy Hydro	31,228	1,451	5,014	2,245	5,256	7,983	9,279	0
TRUenergy	223,244	33,008	34,557	34,487	34,781	33,478	26,541	26,393
Other VIC Plants	944	0	0	0	0	176	384	384
<b>Total internal production</b>	<b>966,487</b>	<b>122,556</b>	<b>143,077</b>	<b>143,096</b>	<b>144,209</b>	<b>138,787</b>	<b>137,804</b>	<b>136,960</b>
(Load at Pumped Storage)	0	0	0	0	0	0	0	0
<b>Net internal production</b>	<b>966,487</b>	<b>122,556</b>	<b>143,077</b>	<b>143,096</b>	<b>144,209</b>	<b>138,787</b>	<b>137,804</b>	<b>136,960</b>
<b>Percentage each company's production represents of the total internal production</b>								
AGL	0.3%	0.3%	0.1%	0.4%	0.3%	0.2%	0.3%	0.2%
Anglesea	2.8%	3.1%	2.7%	2.7%	2.7%	2.8%	2.8%	2.8%
Babcock & Brown Power	0.2%	0.0%	0.5%	0.3%	0.2%	0.1%	0.3%	0.1%
Ecogen Energy	1.3%	0.1%	0.3%	1.9%	1.7%	1.9%	3.2%	0.0%
Energy Brix	2.5%	2.9%	2.2%	2.4%	2.4%	2.4%	2.5%	2.5%
International Power (Hazelwood)	18.8%	18.6%	18.6%	16.3%	16.9%	17.6%	19.7%	24.3%
Loy Yang B	15.8%	16.7%	16.4%	16.5%	15.4%	14.6%	14.3%	16.6%
Loy Yang Power	31.9%	30.1%	31.6%	33.9%	32.6%	30.5%	30.5%	33.9%
Snowy Hydro	3.2%	1.2%	3.5%	1.6%	3.6%	5.8%	6.7%	0.0%
TRUenergy	23.1%	26.9%	24.2%	24.1%	24.1%	24.1%	19.3%	19.3%
Other VIC Plants	0.1%	0.0%	0.0%	0.0%	0.0%	0.1%	0.3%	0.3%
<b>Total Percentage</b>	<b>100.0%</b>	<b>100.0%</b>	<b>100.0%</b>	<b>100.0%</b>	<b>100.0%</b>	<b>100.0%</b>	<b>100.0%</b>	<b>100.0%</b>

Current Week (continued)



	Sunday	Monday	Tuesday	Wednesday	Thursday	Friday	Saturday
<b>For the Current Week</b>							
Total Energy (MWh)	125,152	136,872	136,521	136,068	135,453	135,214	126,942
Trading Demand Target (MW)	Maximum	5,641	6,502	6,417	6,397	6,391	5,837
	Average	5,215	5,703	5,688	5,670	5,644	5,289
	Minimum	4,641	4,410	4,528	4,480	4,481	4,452
Regional Load Factor (%)	92%	88%	89%	89%	88%	87%	91%
Wholesale Electricity Price Index (WEPI)	Maximum	N/A	54.39	55.73	54.88	54.29	54.23
	Average	N/A	54.39	55.73	54.88	54.29	54.23
	Minimum	N/A	54.39	55.73	54.88	54.29	54.23
Trading Price (\$/MWh)	Volume-Weighted Ave	-8.33	15.10	27.62	31.44	33.02	30.56
	Time-Weighted Ave	-8.94	10.57	26.72	31.05	32.24	29.96
	Minimum	-266.92	-496.71	9.21	20.58	18.51	18.92
Temperature °C (Melbourne)	Maximum	22.5	21.4	21.2	20.2	23.7	28.0
	Minimum	18.6	16.1	14.1	14.3	14.4	12.8
<b>Percentage Change from Same Week Last Year</b>							
Total Energy (MWh)	3%	-5%	-6%	-2%	-5%	-7%	-6%
Trading Demand Target (MW)	Maximum	3%	-8%	-8%	-1%	-4%	-7%
	Average	3%	-5%	-6%	-2%	-5%	-6%
	Minimum	7%	-5%	-6%	-4%	-5%	-4%
Wholesale Electricity Price Index (WEPI)	N/A	19%	22%	26%	23%	22%	N/A
Trading Price (\$/MWh)	Maximum	1,072%	-9%	97%	28%	135%	-98%
	Volume-Weighted Ave	-137%	-53%	-12%	8%	9%	-73%
	Time-Weighted Ave	-140%	-66%	-12%	9%	9%	-71%
Temperature °C (Melbourne)	Maximum	-1%	-19%	-9%	0%	5%	12%
	Minimum	35%	19%	-17%	-1%	-5%	-14%
<b>For the Same Week Last Year</b>							
Total Energy (MWh)	121,341	144,088	145,690	139,554	142,360	145,085	135,019
Trading Demand Target (MW)	Maximum	5,457	7,058	6,980	6,479	6,665	6,966
	Average	5,056	6,004	6,070	5,815	5,932	6,045
	Minimum	4,333	4,619	4,816	4,658	4,718	4,707
Regional Load Factor (%)	93%	85%	87%	90%	89%	87%	87%
Wholesale Electricity Price Index (WEPI)	Maximum	27.53	55.84	42.13	37.27	42.52	3369.02
	Average	22.52	32.35	31.21	29.20	30.28	114.68
	Minimum	13.85	11.63	14.87	13.26	13.52	12.43
Temperature °C (Melbourne)	Maximum	22.8	26.5	23.4	20.2	22.5	24.9
	Minimum	13.8	13.5	17.0	14.4	15.1	16.3

Long-Term Trends

This table contains electricity futures pricing, supplied by d-cyphatrade. All data other than flat and peak quarterly pricing is implied.

		CalYear	FinYear Ending	Q1	Q2	Q3	Q4
<b>Actual Prices for Flat Load (All Times)</b>	2009	51.19		75.05	44.00	44.25	41.90
	2010	56.11	51.74	76.25	45.00	51.75	51.75
	2011	66.99	62.69	93.05	54.80	59.75	60.80
	2012						
<b>Actual Prices for Peak Load (7am-10pm M-F)</b>	2009	80.04		140.00	61.20	61.20	60.25
	2010	79.77	78.62	140.00	55.45	62.00	64.00
	2011	77.57	78.40	139.20	50.20	57.20	65.55
	2012						
<b>Implied Prices for Off-Peak Load (All other times)</b>	2009	27.92		22.67	30.13	30.58	27.10
	2010	37.03	30.06	24.84	36.57	43.48	41.87
	2011	58.46	50.02	55.83	58.51	61.81	56.97
	2012						

