

## CPRS legislation must pass this year: Combet

The Government is now at a critical juncture in the prosecution of its policy to implement an emissions trading scheme in the form of the CPRS, according to Parliamentary Secretary for Climate Change Greg Combet.

In an address to a Sydney conference, Combet has outlined the importance of passing the CPRS legislation this year ahead of the UNFCCC conference in Copenhagen.

“Policy development and consultation has almost concluded, and the parliamentary debate now beckons,” says Combet.

“The fact is that the Government needs support to have the CPRS pass the Senate. On current indications it is fair to say that this looks like a big challenge,” he warns.

Combet says that if a market based trading system fails to pass it is difficult to see how a new carbon tax regime, or any other alternative could be implemented.

“Given the high public support for action to be taken and also our international obligations, this means that there will be pressure on governments to turn to other measures,” he says.

“It is not difficult to envisage calls for direct government regulation of emissions at national or state levels, a range of potentially inconsistent measures introduced by governments relating to energy efficiency, perhaps a change to development and planning laws for new projects or developments likely to be high in carbon pollution.”

Combet warns it may even mean that each State and Territory moves to introduce their own emission trading schemes or carbon taxes with the possibility of several distinct systems emerging.

He says that uncertainty over the measures that may be implemented and the greater likelihood of differing approaches would cause havoc for investors. “This in turn would mean a reduction in investment approvals in potentially affected industries having a negative flow through for jobs,” he says.

“The simple equation here, and one which is especially relevant for investment and employment, is that we need a rational, national approach to emissions reductions – one which provides a stable economic basis for investment, as well as charting a pathway to achieve ambitious targets,” says Combet.

Combet argues that the CPRS offers this certainty. “Despite the opposition the Government now faces we remain determined to address climate change, and to do so in part by implementing the CPRS.”

“It is clearly in Australia’s interests to be in a position to attend the Copenhagen Conference in December having passed what is recognised as a world class emissions trading scheme,” he concludes.

### This week's volume-weighted electricity price (\$/MWh)

NSW:	\$24.61
Vic:	\$24.28
Qld:	\$24.24
SA:	\$26.60
Tas:	\$36.85

Energy Supply Association of Australia Chief Executive Clare Savage agrees that the introduction of a well designed emissions trading scheme, as soon as practical, is critical to ensuring investor confidence in the energy supply sector.

However, Savage says that “there are four critical issues that are not adequately addressed in the Federal Government’s current CPRS design. esaa’s support for the CPRS is conditional upon these issues being adequately addressed”.

To ensure security of supply and investor confidence in long-lived capital-intensive energy assets, esaa argues that the CPRS needs to adequately address the stranding of coal-fired generation assets with a measured transition to full auctioning that would enable a greater volume of permits to be administratively allocated to affected generators.

To provide further confidence, the CPRS must commit to 10 years of firm scheme caps followed by a 10-year rolling gateway.

Savage says it is also essential to ensure there are no additional working capital requirements for liable entities from the operation of the scheme.

The fourth critical issue to be addressed is ensuring retail price regulation is removed to provide the price signals necessary for new investment – without full cost pass through the viability of retailers and the entire energy supply industry is at risk.

“Unless these issues are adequately resolved, esaa cannot support the CPRS,” says Savage.

## US House of Reps bill aims for 20 per cent by 2020

Draft clean energy legislation has been released by the US House of Representatives Energy and Commerce Committee which establishes a market-based “global warming pollution reduction program” with a short-term target of 20 per cent reduction on 2005 levels of emissions by 2020.

The draft bill reflects a request by US President Barack Obama in an address to a joint session of Congress in February, when he asked Congress to “send me legislation that places a market-based cap on carbon pollution and drives the production of more renewable energy in America”.

Committee Chair Henry Waxman and Energy and Environment Subcommittee Chair Edward Markey say the draft legislation will combat global warming, create jobs and help end America’s “dangerous dependence on foreign oil”.

“Our goal is to strengthen our economy by making America the world leader in new clean energy and energy efficiency technologies,” says Waxman.

The draft bill establishes a market-based program for reducing greenhouse gas emissions from electric utilities, oil companies, large industrial sources and other covered entities collectively responsible for 85 per cent of US emissions.

Under this program, covered entities must have tradeable federal permits for each ton of pollution emitted into the atmosphere.

The program reduces the number of available allowances issued each year to ensure that aggregate emissions from the covered entities are reduced by three per cent below 2005 levels in 2012, 20 per cent below 2005 levels in 2020, 42 per cent below 2005 levels in 2030, and 83 per cent below 2005 levels in 2050.

Entities that emit less than 25,000 tons per year of carbon dioxide equivalent are not covered by the program.

The bill also directs the US Environmental Protection Agency to create a strategic reserve of about 2.5 billion allowances as a cushion in case prices rise faster than expected.

A small number of allowances authorised to be issued each year will be set aside by the EPA and these will be available through an auction when allowance prices rise to unexpectedly high levels.

The proceeds of the auction will be used to purchase additional offsets to replenish the strategic reserve.

The draft directs EPA to achieve further reductions by entering into agreements to prevent international deforestation. By 2020, these supplemental reductions will achieve reductions equivalent to 10 per cent of US emissions in 2005, according to the draft legislation.

The draft bill also promotes renewable energy by requiring retail electricity suppliers to meet a certain percentage of their load with electricity generated from renewable resources.

The renewable electricity requirement begins at six per cent in 2012 and rises to 25 per cent in 2025.

The draft promotes development of carbon capture and storage technologies “to ensure a continuing place for coal in [America’s] energy future”, and contains provisions to facilitate the deployment of a smart grid, including measures to “reduce utility peak loads through smart grid and demand response applications and to help promote smart grid capabilities in new home appliances”.

It also directs the US Federal Energy Regulatory Commission to reform the regional planning process to modernise the electric grid and provide for new transmission lines to carry electricity generated from renewable sources.

Under the draft bill’s new energy efficiency resource standard program, each distribution company must demonstrate that its customers have achieved a required level of cumulative electricity or natural gas savings relative to business-as-usual projections.

The efficiency standard starts with one per cent electricity and 0.75 per cent natural gas savings in 2012 and gradually increases to a 15 per cent cumulative electricity savings and 10 per cent cumulative natural gas savings by 2020.

To ensure that US manufacturers are not disadvantaged relative to overseas competitors, the draft authorises companies in certain industrial sectors to receive “rebates” to compensate for additional costs incurred under the program.

Sectors that use large amounts of energy and produce commodities that are traded globally would be eligible for the rebates.

If the US President finds that the rebate provisions do not sufficiently correct competitive imbalances, he is directed under the bill to establish a “border adjustment” program.

Under that program, foreign manufacturers and importers would be required to pay for and hold special allowances to “cover” the carbon contained in US-bound products.

“This legislation will create clean energy jobs that can’t be shipped overseas, reduce our dependence on foreign oil, and make America the global leader in energy technology. We will create jobs by the millions, save money by the billions, and unleash energy investment by the trillions,” says Markey.

## Batchelor launches Victoria’s smart meter roll-out

The program to roll-out new smart electricity meters for 2.5 million Victorian households and small businesses has been officially launched by Victorian Energy Minister Peter Batchelor.

Electricity distributors Jemena and United Energy Distribution are among the first to start the roll-out of the new smart meter infrastructure to their more than one million customers.

Jemena and UED will begin notifying the first households and small businesses of arrangements to replace old meters during the next few months.

“The launch of the roll-out marks an important milestone for Victoria’s advanced meter project, which will provide a valuable tool to help Victorians to manage their electricity use and facilitate better customer service from both electricity distributors and retailers,” says Batchelor.

Batchelor says the new meters provide several key features including the ability: to read meters remotely; to automatically notify distributors if loss of supply is detected, helping to speed up supply restoration; to remotely connect and disconnect electricity supply; and for customers to receive accurate readings on their electricity use at 30 minute intervals, making it easier for customers to monitor energy consumption and cost.

“A key benefit for Victorian households of the enhanced meters will be the reduced need for estimated bills and the potential for retailers to offer time-of-use pricing,” Batchelor says.

All five electricity distributors in Victoria will be required to roll-out the new meters to all households and small businesses across Victoria over the next four years.

Batchelor says the roll-out of smart meters represents the single most significant enhancement to electricity distribution infrastructure in the state’s history.

## Energy efficiency program for NSW small business

The New South Wales Government is recruiting small businesses across the state to participate in a \$15 million program to help lower power bills and carbon pollution.

Deputy Premier and Climate Change Minister Carmel Tebbutt says the Energy Efficiency for Small Business Program offers an energy assessment, tailored action plan and a rebate of up to \$5,000 for improvements.

“Under the program eligible businesses receive an onsite energy assessment and an action plan to prioritise ways to save electricity,” says Tebbutt.

A rebate of up to \$5,000 is also available to pay for up to half the cost of the improvements that have a return on investment period of more than two years.

Tebbutt says the program offers important support to businesses wanting to save money and reduce their impact on the environment.

Action businesses can take to improve energy efficiency include switching to compact fluorescent or high efficiency luminaire lighting, which can cut electricity use for lighting by up to 75 per cent, replacing air conditioners that are more than 10 years old, which can reduce energy costs for heating and cooling by up to 40 per cent, and fixing leaks in compressed air systems, which can cut electricity use for the compressor by up to 50 per cent.

Businesses spending up to \$20,000 a year on electricity or employing up to about 10 people are eligible to take part. The Government program shares the cost of the initial audit.

The Energy Efficiency for Small Business program is part of the \$150 million Energy Efficiency Strategy funded under the NSW Climate Change Fund.

## \$20 million clean energy centre opens

A new national \$20 million Clean Energy Innovation Centre has been launched by Federal Industry Minister Kim Carr.

The centre offers a range of hands-on services to small- and medium-sized businesses in the clean energy sector including free business reviews and supporting grants, to help boost productivity and tap into the sector's enormous potential.

“From today, this centre will deliver real, practical advice to help businesses,” Senator Carr says.

“Clean energy is an industry sector with enormous potential for growth. By investing in this centre, we are investing in the future,” he says.

Newcastle Innovation, the University of Newcastle's commercial arm, is hosting the centre, working in close partnership with the Australian Institute for Commercialisation and the Western Australian Sustainable Energy Association.

Federal Energy Minister Martin Ferguson has welcomed the centre's opening. “Supporting the clean energy sector will not only help to create jobs suited to

the future low-carbon economy but will encourage firms that are helping to reduce Australia's carbon footprint right now," Ferguson says.

"This centre will adopt a broad definition of the clean energy sector. It will capture firms involved in the generation of energy from renewable and low carbon sources such as solar, wind, wave, tidal, low-emission coal, biofuels and geothermal as well as cogeneration."

Carr also announced the appointment of Philip Pledge as the chair of the Clean Energy Centre Interim Advisory Board. Pledge is currently chair of the SA Water Board.

"The board will comprise experts from within the clean energy field and the research sector. It will provide advice to me on the strategic direction of the centre. I look forward to working with Mr Pledge and his board," Carr says.

## In brief

---

### GreenPower first for ACT customers

Energy retailers in ACT must first offer GreenPower to all new or reconnecting customers under a new system commencing on 1 April 2009. "This means that when you ring up an electricity supplier to connect, the first product they will offer you will be sourced from accredited green energy, making it much easier for people to reduce their carbon emissions," explains ACT Energy Minister Simon Corbell. A month-long information campaign will accompany the new process for connecting to GreenPower. "This change in the GreenPower process for the ACT represents another action achieved under the ACT Government's climate change strategy, *Weathering the Change*, and follows on from other initiatives underway to help reduce our greenhouse gas emissions," Corbell says.

### Geodynamics Cooper Basin project ready for stage two

Geodynamics has announced the successful completion of the 'proof of concept' program of its Cooper Basin geothermal project in South Australia, marking the achievement of the first stage of the company's business plan. This success follows the completion of Geodynamics' closed loop test, and analysis and independent validation of the results. The results of the closed loop test have been successful, confirming the previously established large size of the Habanero stimulated reservoir. Now that the first stage is complete, Geodynamics will focus solely on the second stage of its business plan, working towards commercial demonstration.

### Pressure continues on credit

Market upheaval hasn't spared rated Australian and New Zealand corporates operating in the materials and energy sectors, although most have maintained satisfactory credit quality over the past six months, according to Standard & Poor's Ratings Services latest report '*For Australia's Materials And Energy Sectors, The Pressure Mounts On Creditworthiness*'. The report explores trends and issues affecting the credit quality of Australian companies involved in mining, building products, construction and engineering, packaging, chemicals and oil and gas. It concludes that pressure on credit quality is likely to persist at least through 2009 given the ongoing turbulent credit market conditions and the prospect of a further weakening in the economic environment. "Creditworthiness across the nation's materials and energy sectors has shifted firmly to a negative bias in the past six months," Standard & Poor's Credit Analyst Peter Stephens says. "About half of our rated portfolio is now either on a negative outlook or CreditWatch Negative, indicating that we expect more ratings downgrades than upgrades in the near term."

### **Approvals for Musselroe Bay wind farm**

Roaring Forties has been given the final Commonwealth approvals for its planned wind farm at Musselroe Bay in north-eastern Tasmania, according to *ABC News*.

### **Victorian solar industry fellowship applications open**

Victorian Energy Minister Peter Batchelor has opened applications for three Victorian solar industry fellowships to help increase solar expertise in the state. Batchelor says the fellowships are worth up to \$30,000 each and are designed to allow individuals to work with major solar companies overseas to develop expertise, which could then be used in Victoria. "The Brumby Government is taking action to change the state's energy mix and ensure Victoria remains a strong leader in renewable energy projects," Batchelor says. "Victoria has great potential for large-scale solar projects and these fellowships will help us build the expertise locally to capitalise on that potential." Batchelor says the fellowships are open to Victorian-based solar industry professionals who could demonstrate their placement will enable them to bring back knowledge to promote the growth of Victorian large-scale solar generation technologies. The Victorian and Queensland Governments last year announced joint funding of \$180,000 for six fellowships – three for each state – as part of the Solar Industry Fellowship Program, as well as \$500,000 to develop a detailed solar atlas for both states. "A tender process to undertake the atlas work is underway with a successful applicant expected to be announced soon," Batchelor says. "The atlas will be an important tool to promote Victoria's solar generation potential both here and overseas." Applications for the Solar Industry Fellowship Program close 5 pm Friday, 1 May 2009. The fellowship program will run from 1 July 2009 to 30 June 2010.

### **AGL announces Hallett 4 wind farm construction agreement**

AGL Energy has announced it has entered into agreements for the construction of the 132 MW Hallett 4 wind farm at North Brown Hill in South Australia. The \$341 million Hallett 4 wind farm, located 220 kilometres north of Adelaide, will consist of 63 2.1 MW turbines. AGL will retain all electricity output and green credits as well as full operational and management responsibility for the wind farm. A final decision on long-term ownership structure is anticipated during calendar year 2009.

### **Mongolia studies Ergon Energy's SWER network**

A Mongolian government delegation has met with Ergon Energy executives to study the company's 64,000 kilometre Single Wire Earth Return network in rural Queensland. Ergon Energy General Manager Network and Chair of the SWER Taskforce Neil Lowry says the company's network is recognised as a world leader in delivering a reliable power supply to people in rural areas at an affordable cost. Ergon Energy has 64,000 kilometres of SWER lines to service about four per cent of its customers living in more remote locations. Mongolian delegation spokesman Ts Sanchin says Ergon Energy's SWER system could be the basis for extending the power supply to rural areas of Mongolia. "There are parallels between Queensland and Mongolia in the length of the network we would need to build to service our population living in smaller communities some distance from a major population centre," he says. Lowry says the Ergon Energy specialists have also advised the delegation about improved SWER technologies, including demand management and renewable and energy conservation solutions. "Our ongoing involvement with Mongolia will also have benefits for Ergon Energy, including improving our knowledge of how far a SWER system can be pushed in terms of performance loading and distance extremes," he says. "We also aim to lead others in climate change improvements by sharing information on designing low-loss, efficient distribution electricity network designs."

### **BBP closes sale of Kwinana and Tamar Valley**

Babcock & Brown Power has announced financial close of the sale of its remaining interest in Kwinana Power Station to an entity related to ERM Power Pty Limited. "We are pleased to announce financial close on the sale of Kwinana, which has enabled full repayment of the BBPH debt facility. BBP continues to make progress with the wider sales process and will provide an update to security holders in the fourth quarter of FY2009," BBP Chief Executive Ross Rolfe says. BBP has also confirmed the financial close for the sale of assets of Alinta EATM Pty Limited to Aurora Energy (Tamar Valley) Pty Ltd, consistent with terms announced in January.

### **National Energy Customer Framework draft by end April**

The Ministerial Council on Energy Standing Committee of Officials has announced it will be releasing the First Exposure Draft package of Law, Regulations and Rules for the National Energy Customer Framework by 30 April 2009. The First Exposure Draft package will be open for consultation for a period of six weeks. The Retail Policy Working Group will be holding a general information session on the First Exposure Draft package during the consultation period. RPWG will also hold a number of more targeted stakeholder workshops during the consultation period to provide the opportunity for those who wish to participate in fuller discussion on the details of the package to do so.

### **ENERGEX upgrades Clayfield substation**

ENERGEX has commenced a \$500,000 upgrade to the Clayfield substation in northern Brisbane to install new capacitor banks and provide a more reliable and constant flow of electricity during times of peak consumption. "The Clayfield area has experienced a significant population growth in the last few years which has its obvious impact on the local electricity network," ENERGEX Network Program Manager Kevin Ball says. "But when you combine this population growth with the fact that the average south-east Queensland home now uses up to 70 per cent more electricity that they did just 10 years ago it is easy to see why ENERGEX is working hard to meet the community's power needs." Work on the substation is expected to be completed in the second half of this year. The project is part of a record \$4 billion-plus five-year capital expenditure program currently being undertaken by ENERGEX.

## **In review**

### **NGERS amendment inquiry**

The Senate has referred the National Greenhouse and Energy Reporting Amendment Bill 2009 to the Finance and Public Administration Committee for inquiry and report by 7 May 2009. The Bill has been referred in order to examine the provisions of the bill that relate to the power and authority of the Greenhouse and Energy Data Officer. The Bill can be accessed via <http://parlinfo.aph.gov.au/parlInfo/search/display/display.w3p;query=Id:%22legislation/billhome/r4081%22>. The Committee invites written submissions **by 7 April 2009**.

For further information, contact the Committee Secretariat on 02 6277 3530.

## Senate Select Committee on Climate Policy

A Senate Select Committee on Climate Policy will inquire into the choice of emissions trading as the central policy to reduce Australia's carbon pollution, taking into account the need to: reduce carbon pollution at the lowest economic cost; put in place long-term incentives for investment in clean energy and low-emission technology; and, contribute to a global solution to climate change. It will also consider the relative contributions to overall emission reduction targets from complementary measures such as renewable energy feed-in laws, energy efficiency and the protection or development of terrestrial carbon stores. The terms of reference can be reviewed at

[http://www.aph.gov.au/senate/committee/climate\\_ctte/tor.htm](http://www.aph.gov.au/senate/committee/climate_ctte/tor.htm).

The Committee is required to report by 14 May 2009. The Committee is inviting submissions to this inquiry **by 8 April 2009**.

## AER draft decision on interval meter reassignment

The Australian Energy Regulator has released its draft decision on the interval meter reassignment requirements, which establish the customer notification and information requirements on distributors before they can reassign customers (who consume less than 20 MWh per annum of electricity) to a time of use network tariff, following the installation by the distributor of an interval meter under the AMI rollout. The draft decision is available on the AER's website, <http://www.aer.gov.au/content/index.phtml/itemId/727414>.

Submissions to the draft decision are requested **by 10 April 2009** and can be sent to [aer inquiry@ aer.gov.au](mailto:aer inquiry@ aer.gov.au).

## Effectiveness of electricity and gas emergency

The Ministerial Council on Energy has released a discussion paper prepared by the Energy Security Working Group on the effectiveness of current electricity and gas emergency arrangements. The discussion paper is available at [http://www.ret.gov.au/Documents/mce/\\_documents/ESWG%20emergency%20arrangements%20discussion%20paper%20-%20March%202009.pdf](http://www.ret.gov.au/Documents/mce/_documents/ESWG%20emergency%20arrangements%20discussion%20paper%20-%20March%202009.pdf). The ESWG is seeking broad industry comment on the appropriateness and effectiveness of the existing electricity and gas emergency arrangements in each jurisdiction, the coordination of emergencies affecting multiple jurisdictions, and to canvass thought and/or suggestions on appropriate roles and functions that may be assumed by the Australian Energy Market Operator to achieve improvements in this area.

Submissions are requested **by 10 April 2009**.

## IPART draft review

The New South Wales Independent Pricing and Regulatory Tribunal has released its draft report for 2009-10 of the electricity purchase allowance that is included in regulated electricity prices. IPART's draft decision and consultants report are available on IPART's website <http://www.ipart.nsw.gov.au>.

Submissions on IPART's draft report are due **by 14 April** before a final report will be released by 20 May 2009, for implementation on 1 July 2009.

## Distribution Network Planning and Expansion Review

The Australian Energy Market Commission has published a scoping and issues paper on its review of national framework for electricity distribution network planning and expansion. The purpose of the paper is to seek stakeholder comments on the scope and key design issues that require resolution in recommending a national framework for distribution planning and expansion to the Ministerial Council on Energy. The AEMC is particularly interested in views on what aspects of the current jurisdictional distribution planning and expansion requirements should be maintained in the national framework and also what features of the arrangements for transmission planning are appropriate for distribution.

Submissions to the Scoping and Issues Paper are due **by 17 April 2009** and should contain the reference "EPR0015" in the subject heading. Submissions may be sent electronically to [submissions@aemc.gov.au](mailto:submissions@aemc.gov.au).

The AEMC is required to provide its Final Report to the MCE by 30 September 2009. More information is available on the AEMC website at <http://www.aemc.gov.au/electricity.php?r=20090204.144643>.

## AEMC proposed compensation guidelines

The Australian Energy Market Commission has published its proposed compensation guidelines and an explanatory statement. Under market rules, scheduled generators, scheduled network service providers and other market participants can apply for compensation as a direct result of the application of an administered price, market suspension, Value of Lost Load or market floor price event. The guidelines play an important role in the decision-making process on compensation.

The Commission invites written submissions on the proposed guidelines **by 21 April 2009**.

## AEMC hedging contracts review

The Australia Energy Market Commission has published a framework and issues paper for the review into the role of hedging contracts in the existing NEM prudential framework. This paper sets out those issues requiring consideration as part of the review and highlights a series of questions on which the Commission is seeking stakeholder views. In this review, the AEMC is seeking to provide advice to the Ministerial Council of Energy on ways in which NEM participants' futures and other types of contracts can be integrated into the NEM prudential framework with the objective of enhancing the operation and efficiency of that regime.

The AEMC will hold a public forum on the framework and issues paper on Thursday 16 April 2009, from 9.30 am to 12.30 pm at the Wangaratta Room of Hilton Melbourne International Airport. Registrations close on 9 April 2009.

A copy of the framework and issues paper is available on the AEMC website at: <http://www.aemc.gov.au/electricity.php?r=20090303.112859>.

The Commission invites submissions on this framework and issues paper **by 24 April 2009**.

### Gas supply and emergency management review, WA

The Western Australian Government has established the Gas Supply and Emergency Management Committee which will review the security of the state's gas supplies and how any future gas supply disruptions are to be managed. The Committee has been tasked to review and provide advice to government in regard to: gas supply security, both present and long term; the potential for gas storage or alternative schemes to avoid gas supply disruption or alleviate its effect; and, lessons learnt from the disruption in supplies from Varanus Island in 2008. A public consultation package is available at [http://www.energy.wa.gov.au/2/3260/64/gas\\_supply\\_and\\_.pm](http://www.energy.wa.gov.au/2/3260/64/gas_supply_and_.pm).

Submissions are due **by 1 May 2009** and the Committee is to provide a final report to WA Government in September 2009.

### Victorian inquiry into renewables approval process

The Victorian Parliamentary Environment and Natural Resources Committee has commenced an inquiry into the opportunities to reduce red tape associated with the approvals process for renewable energy projects in Victoria. In particular, the Committee is asked to consider: the major obstacles facing investors in large-scale renewable energy projects in Victoria, including environment, planning and other regulations; how Victoria compares to other Australian jurisdictions with regard to relevant approvals for renewable energy projects; opportunities to reduce risk and delays for investors; the likely future drivers of renewable energy in Victoria, particularly in the context of the Carbon Pollution Reduction Scheme and the expanded Federal Renewable Energy Target; and, other reviews and inquiries covering similar issues. The Committee invites written submissions from interested parties and organisations addressing the terms of reference.

The closing date for submissions is **15 June 2009**. Further information may be obtained from the Committee Secretariat on 03 8682 2803.

## International

### New Zealand to review electricity market

New Zealand Energy Minister Gerry Brownlee has announced a review which aims to improve the performance of the electricity market and its institutions and governance arrangements to better achieve the government's objectives for the electricity sector. Brownlee says the review of the electricity sector will start work immediately. The Minister has released the terms of reference for the review and announced the six independent experts being appointed to a Technical Advisory Group. "The government has concerns about security of supply, the affordability of electricity, and duplication of electricity sector governance," says Brownlee. "There are a number of other reports completed or underway in the electricity sector. The best way to draw the threads together and make timely decisions to build public, industry and investor confidence is to proceed with a Ministerial review," he says. The Technical Advisory Group will be supported by the Ministry of Economic Development and is broadly modelled on the advisory group structure used in the first phase of the reforms to New Zealand's Resource Management Act.

### InterGen to double output of natural gas-fired station in UK

InterGen has applied to the UK Department of Energy and Climate Change to expand its natural gas-fired power station at Spalding, north of London. The proposed £500 million expansion will provide up to 900 MW of additional generating capacity and effectively doubles the output of the existing plant. InterGen is aiming to have the new station operational by early 2014 to help address the projected electricity generation gap in the UK.

## US invests US\$3.2 billion in new energy efficiency plans

US Vice President Joe Biden and Energy Secretary Steven Chu have announced plans to invest US\$3.2 billion in energy efficiency and conservation projects. The Energy Efficiency and Conservation Block Grant program, funded under the American Recovery and Reinvestment Act, will provide formula grants for projects that reduce total energy use and fossil fuel emissions, and improve energy efficiency nationwide. "Local leaders will have the flexibility in how they put these resources to work – but we will hold them accountable for making the investments quickly and wisely to spur the local economy and cut energy use," says Biden. The funding will support energy audits and energy efficiency retrofits in residential and commercial buildings, the development and implementation of advanced building codes and inspections, and the creation of financial incentive programs for energy efficiency improvements. Other activities eligible for use of grant funds include projects to reduce and capture methane and other greenhouse gas emissions from landfills, renewable energy installations on government buildings, and deployment of combined heat and power and district heating and cooling systems. To ensure accountability, the Department of Energy will provide guidance and require grant recipients to report on the number of jobs created or retained, energy saved, renewable energy capacity installed, greenhouse gas emissions reduced, and funds leveraged. Funding is based on a formula that accounts for population and energy use. This announcement is in addition to DOE's recent release of nearly US\$8 billion to support weatherisation and state energy projects.

## US regulators outline smart grid funding criteria

US state and federal regulators have outlined a list of criteria for the Department of Energy to consider when it starts providing grant and other funding for smart grid projects. The regulators, members of the Smart Grid Collaborative jointly sponsored by the National Association of Regulatory Utility Commissioners and the Federal Energy Regulatory Commission, have developed the criteria as a consensus for establishing preconditions under which smart grid projects would be funded through the American Recovery and Reinvestment Act. "Getting a smart grid established in America is very important," FERC Commissioner Suede Kelly says. "We believe we can do this in a way that expands opportunities for consumers while keeping the grid safe, secure and reliable. We want the money that Congress has dedicated to this effort to be put to its best use. The criteria we propose today are a consensus among 19 states and FERC on the best way that DOE can efficiently and effectively fund smart grid demonstration projects," she says.

## EREGG developing 10-year gas network plan

The European Regulators Group for Electricity and Gas has launched a public consultation on its recommendations for a 10-year gas network development plan. The 10-year plan is to be drafted every two years by the European network of transmission system operators for gas. Both the plan and ENTSOG have been proposed as part of the European Union's "Third Package" of energy market reforms agreed earlier this month by representatives of the European Parliament and national governments. A final vote by parliament is yet to take place. The 10-year plan aims to build on national investment plans and guidelines for trans-European energy networks, and identify investment, especially in terms of cross-border capacities, according to ERGEG. "ERGEG sees the 10-year network development plan as a key tool to improve competition and security of supply," the regulators says. ERGEG was established by the European Commission in 2003 as its advisory group on internal energy market issues in Europe.

## Calendar of Events

16 April 2009

The Western Australian Government is intending to introduce legislation into Parliament that will enable gas fields with a broader gas specification to choose to treat the gas to meet existing specifications or to supply at a broader specification and to compensate adversely affected parties. This will involve some existing contracts being amended by imposing a regulated gas specification and a series of legislated rules to enable the scheme to operate.

The drafting of this Bill is progressing and the WA Office of Energy is expecting it will be sufficiently completed to circulate to interested parties in the next couple of weeks. The draft bill will also be made available at the Office of Energy's website at [www.energy.wa.gov.au](http://www.energy.wa.gov.au). Parties will have 10 working days to review and provide comments.

The Office of Energy is inviting interested parties to a forum where the Office will provide an overview of the Bill and how the new scheme is intended to operate. The forum is to be held at 10 am to 12 noon on Thursday, 16 April 2009. The location is the Tesla and Edison Rooms on Level 8, 197 St George's Terrace, Governor Stirling Tower, Perth.

Please register attendance with Tarin Bindon on 08 9420 5620 or [tarin.bindon@energy.wa.gov.au](mailto:tarin.bindon@energy.wa.gov.au) by 12 noon Wednesday 15 April.

6 – 7 May 2009

EnergyAustralia will be hosting the annual **Electricity Supply Industry Field Days** event at The Dome, Sydney Showground, Sydney Olympic Park, on 6 and 7 May 2009. The event comprises an exhibition, seminar, competitions and demonstrations all aimed at further improving safety training and awareness for those associated with the electricity, utilities and infrastructure industries. The theme for Field Days 2009 is "Watts New – Watts Safe".

Accredited training programs will again offer the chance for industry workers to improve their qualifications by signing up for safety-related training courses during the event. Participation in the two-day event is welcome from any people or businesses with an interest in electrical safety in the workplace and entry is free for all delegates.

To attend or exhibit at Field Days 2009, or to obtain further details, visit [www.fielddayswithenergy.com.au](http://www.fielddayswithenergy.com.au).

22 September 2009

A **Climate Change Adaptation Information Sharing Forum** will be held in Canberra on 22 September 2009. The aim of the forum is to share information on how organisations, communities and regions are adapting to climate change. Participants will learn of experiences and developments underway across many sectors. It will enable delegates to identify relevant information and players which are needed to build better networks and partnerships. The forum will not address the causes of climate change, projections of changes, or ways to mitigate climate change. Forum organisers are currently seeking presentations. Potential presenters are requested to email [admin@securityresearch.org.au](mailto:admin@securityresearch.org.au) the title of their proposed address by 30 June, and a few dot points to explain the topic. No abstract is required.

For more information visit [www.climatechange-infrastructure.org.au](http://www.climatechange-infrastructure.org.au).

## Jobs on Offer

### List industry jobs

esaa Full Members are invited to submit industry-related employment opportunities. This is a complimentary service. Email notices to [newseditor@esaa.com.au](mailto:newseditor@esaa.com.au) by close of business Thursday.

### Switching Coordinator

Transend owns and operates Tasmania's electricity transmission system. The company provides its staff with opportunities to have excellent careers whilst having quality time with families and friends.

**Transend Networks** is seeking a **Switching Co-ordinator**, based in Hobart, Tasmania, to be responsible for the planning and compilation of switching plans for Transend's power system operations including capital and non-capital works in accordance with the relevant rules, acts and policies. The successful applicant will have an associate diploma in Electrical Engineering or equivalent, with appropriate experience in the operation and maintenance of HV and EHV assets. The role requires advanced communication and time management skills, and ability to work within a team environment.

The role statement is available via the careers section at [www.transend.com.au](http://www.transend.com.au) or by emailing [recruitment@transend.com.au](mailto:recruitment@transend.com.au). Applications close 15 April 2009.

### Victorian Solar Industry Development program

#### **Solar Industry Fellowships: A chance to be sponsored to work overseas**

The Victorian Department of Primary Industries is seeking applicants to be a part of the **Victorian Solar Industry Development program**. The fellowships provide A\$30,000 for travel overseas to work with major solar companies, to develop expertise for application in Victoria. The fellowships are open to Victorian based professionals.

Applications are to be submitted by Friday 1 May 2009. The fellowship program will run from 1 July 2009 to 30 June 2010.

Fellowship application forms and guidelines can be found at: [www.dpi.vic.gov.au/solarfellowships](http://www.dpi.vic.gov.au/solarfellowships).

For further information contact:  
The Victorian Solar Industry Fellowships Secretariat  
The Department of Primary Industries  
Phone: 03 9658 4179  
Email: [solar.fellowships@dpi.vic.gov.au](mailto:solar.fellowships@dpi.vic.gov.au).

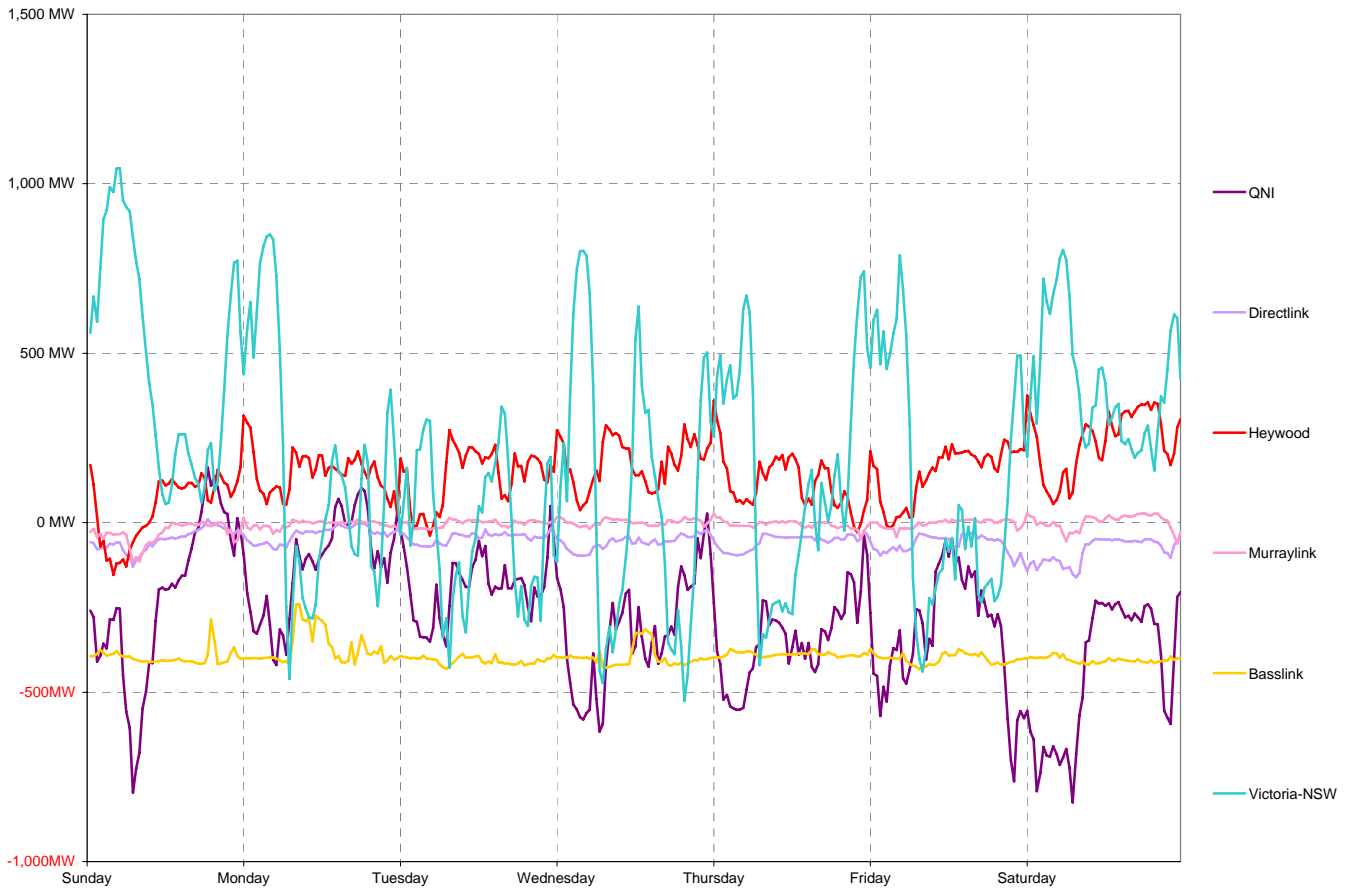
# National Electricity Market Report

Week 13 Ending Saturday 28-Mar-09

## Daily Inter-Regional Energy Flow

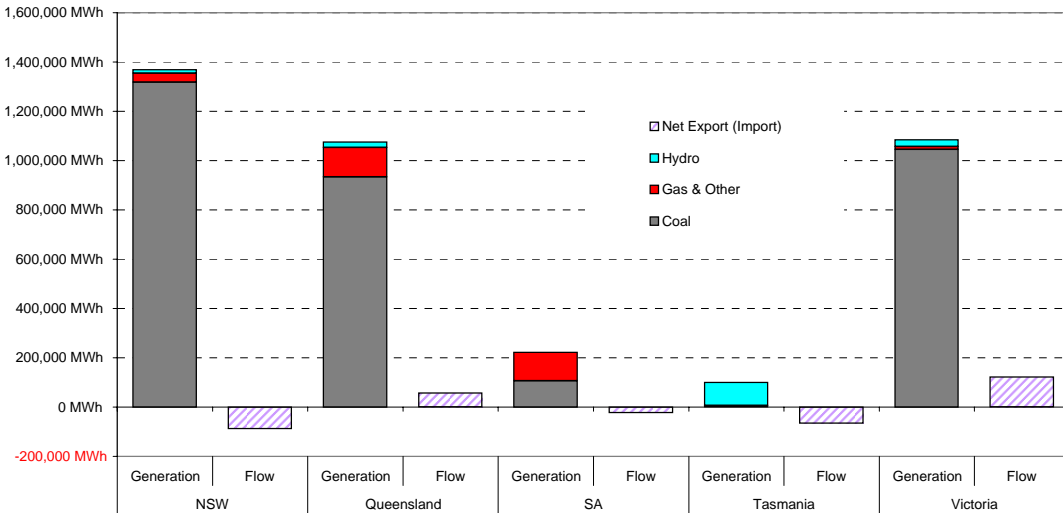
	Daily Net Exports (or Imports)							Weekly Total
	Sunday	Monday	Tuesday	Wednesday	Thursday	Friday	Saturday	
<b>For the Current Week</b>								
NSW	-17,942	-7,263	-5,097	-11,315	-13,064	-11,641	-22,330	-88,651
Queensland	6,436	3,809	5,690	9,138	9,596	9,604	12,449	56,722
South Australia	-495	-3,392	-3,282	-4,359	-2,632	-3,598	-5,881	-23,637
Tasmania	-9,543	-8,870	-9,754	-9,518	-9,315	-9,663	-9,716	-66,378
Victoria	21,544	15,716	12,442	16,054	15,415	15,297	25,477	121,944
<b>MWh Change from Same Week Last Year</b>								
NSW	1,606	14,122	9,979	-2,298	1,364	-1,327	-10,631	12,815
Queensland	-12,766	-18,328	-11,957	-1,581	-4,376	-10,158	-13,397	-72,561
South Australia	3,470	233	-3,269	-5,366	-2,129	-1,648	-3,881	-12,590
Tasmania	705	-2,951	-93	382	1,236	1,026	870	1,175
Victoria	2,824	3,156	13,074	18,193	10,936	17,765	23,158	89,105
<b>For the Same Week Last Year</b>								
NSW	-19,548	-21,385	-15,075	-9,017	-14,428	-10,315	-11,699	-101,465
Queensland	19,202	22,137	17,647	10,719	13,971	19,762	25,846	129,283
South Australia	-3,965	-3,625	-14	1,007	-503	-1,950	-2,000	-11,048
Tasmania	-10,248	-5,920	-9,661	-9,900	-10,551	-10,688	-10,586	-67,552
Victoria	18,720	12,560	-632	-2,139	4,479	-2,468	2,319	32,839

## Interconnector energy flow throughout the week

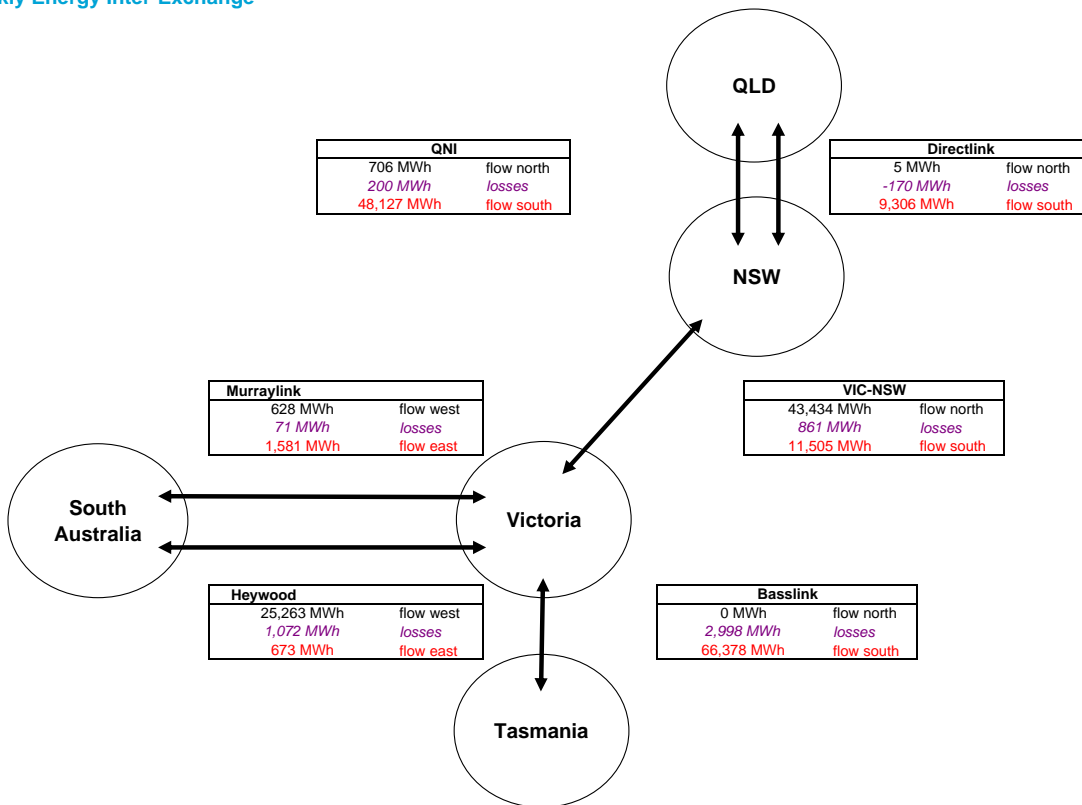


### Generation by Fuel Type

	All data in this table is shown in MWh for the week											
	NSW		Queensland		SA		Tasmania		Victoria		Whole of NEM	
	Generation	Flow	Generation	Flow	Generation	Flow	Generation	Flow	Generation	Flow	Generation	Flow
Coal	1,318,459		934,032		106,823		0		1,045,593		3,404,906	
Gas & Other	36,445		119,407		115,485		6,312		11,010		288,658	
Hydro	13,324		21,755		0		93,922		27,932		156,933	
Pump Storage	0		-403		0		0		0		-403	
<b>Total Generation</b>	<b>1,368,227</b>		<b>1,074,791</b>		<b>222,308</b>		<b>100,233</b>		<b>1,084,535</b>		<b>3,850,094</b>	
Total Exports		12,216		57,432		2,254		0		135,703		
Total Imports		100,866		711		25,891		66,378		13,759		
<b>Net Export (Import)</b>		<b>-88,651</b>		<b>56,722</b>		<b>-23,637</b>		<b>-66,378</b>		<b>121,944</b>		
Net Consumption	1,456,878		1,018,070		245,945		166,611		962,592			

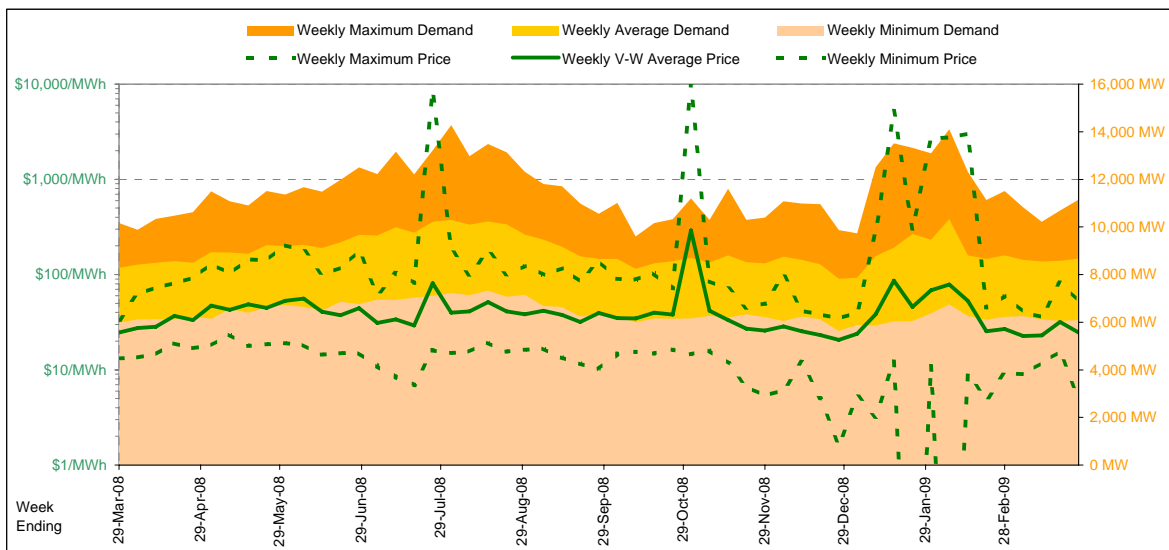


### Weekly Energy Inter-Exchange



Current Year

		Week 13 Ending Saturday			52-weeks ending Sat	
		28-Mar-09	% change	29-Mar-08	28-Mar-09	Date Occurred
Energy (MWh)	Total	1,456,316	5%	1,390,535	78,820,168	
Trading Demand (MW)	Maximum	11,149	10%	10,162	14,274	28-Aug-08
	Average	8,669	5%	8,277	9,022	
	Minimum	6,095	2%	5,984	5,632	26-Dec-08
Regional Load Factor (%)		78%		81%	63%	
Trading Price (\$/MWh)	Maximum	52.80	57%	33.59	10000.00	
	Volume-Weighted Ave	24.61	-0%	24.71	44.43	
	Time-Weighted Ave	23.51	-3%	24.19	40.56	
	Minimum	4.93	-63%	13.20	-170.76	
Temperature °C (Sydney)	Maximum	26.7	-3%	27.5	40.9	
	Minimum	16.4	14%	14.4	5.3	

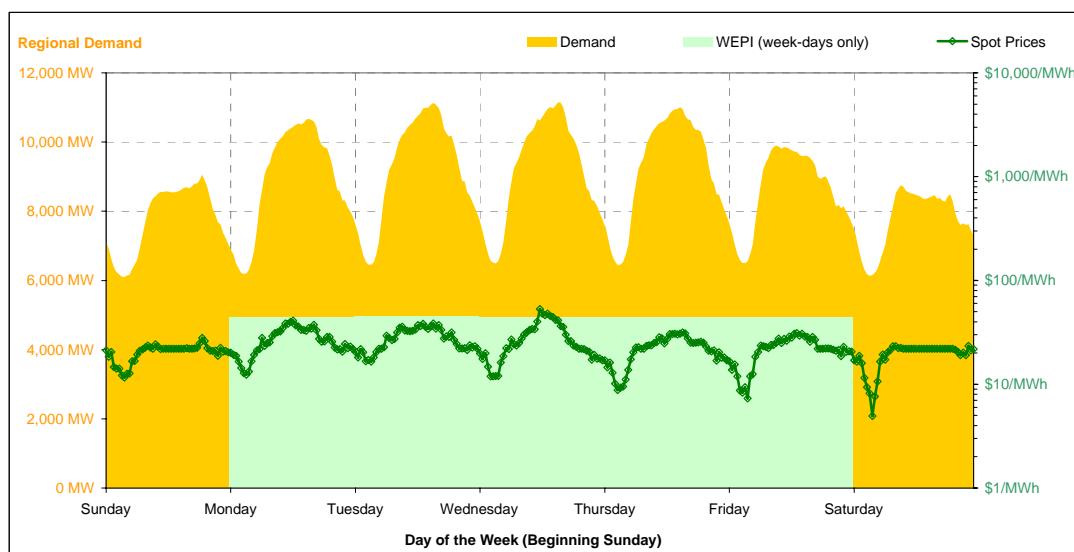


Note that prices below \$1/MWh have been reset to \$1/MWh for the purposes of this display

Current Week

All Data in this table is shown in MWh								
	Weekly Total	Sunday	Monday	Tuesday	Wednesday	Thursday	Friday	Saturday
<b>Total Production by Generation Company</b>								
Babcock & Brown Power	24,305	3,480	3,480	3,480	3,480	3,464	3,455	3,467
Delta Electricity	476,049	64,482	69,971	67,816	68,612	71,575	71,401	62,194
Eraring Energy	323,449	41,003	52,316	54,977	51,534	49,203	43,118	31,299
Macquarie Generation	494,692	57,854	70,837	78,728	75,233	73,911	73,370	64,760
Marubeni	20,068	1,920	3,257	3,250	3,231	3,247	3,244	1,920
Snowy Hydro (NSW)	13,289	12	2,496	4,131	4,074	1,598	981	0
TRUenergy	16,377	0	4,666	3,872	2,839	5,001	0	0
Origin Energy	0	0	0	0	0	0	0	0
Other NSW Plants	0	0	0	0	0	0	0	0
<b>Total internal production</b>	<b>1,368,227</b>	<b>168,750</b>	<b>207,021</b>	<b>216,253</b>	<b>209,001</b>	<b>207,997</b>	<b>195,567</b>	<b>163,640</b>
(Load at Pumped Storage)	0	0	0	0	0	0	0	0
<b>Net internal production</b>	<b>1,368,227</b>	<b>168,750</b>	<b>207,021</b>	<b>216,253</b>	<b>209,001</b>	<b>207,997</b>	<b>195,567</b>	<b>163,640</b>
<b>Percentage each company's production represents of the total internal production</b>								
Babcock & Brown Power	1.8%	2.1%	1.7%	1.6%	1.7%	1.7%	1.8%	2.1%
Delta Electricity	34.8%	38.2%	33.8%	31.4%	32.8%	34.4%	36.5%	38.0%
Eraring Energy	23.6%	24.3%	25.3%	25.4%	24.7%	23.7%	22.0%	19.1%
Macquarie Generation	36.2%	34.3%	34.2%	36.4%	36.0%	35.5%	37.5%	39.6%
Marubeni	1.5%	1.1%	1.6%	1.5%	1.5%	1.6%	1.7%	1.2%
Snowy Hydro (NSW)	1.0%	0.0%	1.2%	1.9%	1.9%	0.8%	0.5%	0.0%
TRUenergy	1.2%	0.0%	2.3%	1.8%	1.4%	2.4%	0.0%	0.0%
Origin Energy	0.0%	0.0%	0.0%	0.0%	0.0%	0.0%	0.0%	0.0%
Other NSW Plants	0.0%	0.0%	0.0%	0.0%	0.0%	0.0%	0.0%	0.0%
<b>Total Percentage</b>	<b>100.0%</b>	<b>100.0%</b>	<b>100.0%</b>	<b>100.0%</b>	<b>100.0%</b>	<b>100.0%</b>	<b>100.0%</b>	<b>100.0%</b>

Current Week (continued)



	Sunday	Monday	Tuesday	Wednesday	Thursday	Friday	Saturday
<b>For the Current Week</b>							
Total Energy (MWh)	186,586	214,219	221,330	220,172	221,018	207,101	185,892
Trading Demand Target (MW)	Maximum	9,057	10,669	11,127	11,149	11,010	8,757
	Average	7,774	8,926	9,222	9,174	9,209	8,629
	Minimum	6,095	6,194	6,458	6,499	6,447	6,137
Regional Load Factor (%)	86%	84%	83%	82%	84%	87%	88%
Wholesale Electricity Price Index (WEPI)	N/A	44.36	44.74	44.45	44.44	43.81	N/A
	Maximum	28.04	41.10	38.51	52.80	31.58	23.38
	Volume-Weighted Ave	20.87	27.79	28.56	28.49	22.87	22.46
	Time-Weighted Ave	20.48	26.60	27.56	26.95	21.87	21.72
	Minimum	11.59	12.36	16.47	11.89	8.76	7.28
Temperature °C (Sydney)	Maximum	26.7	25.7	26.1	26.0	26.6	23.5
	Minimum	17.6	19.5	20.5	20.8	20.5	16.4
<b>Percentage Change from Same Week Last Year</b>							
Total Energy (MWh)	6%	14%	4%	4%	7%	0%	-1%
Trading Demand Target (MW)	Maximum	9%	20%	9%	12%	15%	2%
	Average	6%	14%	4%	4%	7%	0%
	Minimum	2%	2%	1%	0%	-1%	-0%
Wholesale Electricity Price Index (WEPI)	N/A	1%	1%	1%	2%	1%	N/A
Trading Price (\$/MWh)	Maximum	9%	51%	26%	57%	-3%	-3%
	Volume-Weighted Ave	1%	23%	14%	1%	-8%	-12%
	Time-Weighted Ave	-0%	20%	12%	-2%	-11%	-14%
	Minimum	-12%	-21%	24%	-25%	-40%	-52%
Temperature °C (Sydney)	Maximum	8%	6%	-5%	-4%	13%	8%
	Minimum	8%	5%	4%	22%	37%	14%
<b>For the Same Week Last Year</b>							
Total Energy (MWh)	176,684	187,668	212,102	211,856	207,416	206,114	188,697
Trading Demand Target (MW)	Maximum	8,308	8,913	10,162	9,987	9,587	9,692
	Average	7,362	7,820	8,838	8,827	8,642	8,588
	Minimum	5,984	6,064	6,372	6,468	6,480	6,513
Regional Load Factor (%)	89%	88%	87%	88%	90%	89%	88%
Wholesale Electricity Price Index (WEPI)	N/A	43.87	44.45	43.91	43.62	43.41	N/A
	Maximum	25.76	27.23	30.53	33.59	32.66	32.14
	Volume-Weighted Ave	20.76	22.63	25.10	28.28	24.80	25.57
	Time-Weighted Ave	20.49	22.24	24.56	27.64	24.46	25.26
	Minimum	13.20	15.61	13.27	15.88	14.63	15.26
Temperature °C (Sydney)	Maximum	24.8	24.3	27.5	27.2	23.6	21.7
	Minimum	16.3	18.5	19.8	17.0	15.0	15.2

Long-Term Trends

This table contains electricity futures pricing, supplied by d-cyphatrade. All data other than flat and peak quarterly pricing is implied.

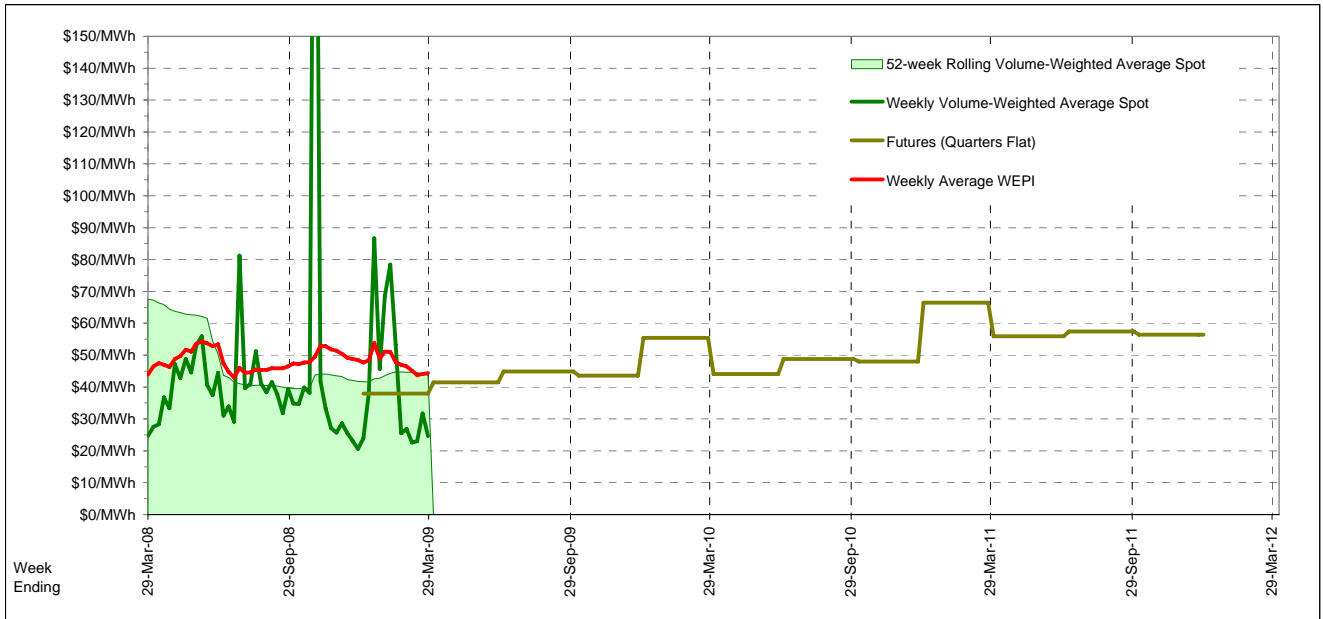
Futures settlement prices for flat load (all times)		CalYear	FinYear Ending	Q1	Q2	Q3	Q4
		2009	42.00	38.00	41.45	44.85	43.60
		2010	49.04	55.45	44.05	48.75	48.00
		2011	59.06	66.50	55.95	57.45	56.45
		2012					

Futures settlement prices for peak load (7am-10pm M-F)		CalYear	FinYear Ending	Q1	Q2	Q3	Q4
		2009	59.38	50.00	58.50	64.00	64.65
		2010	77.94	90.50	64.00	78.00	79.00
		2011	55.51	78.25	50.00	51.00	43.00
		2012					

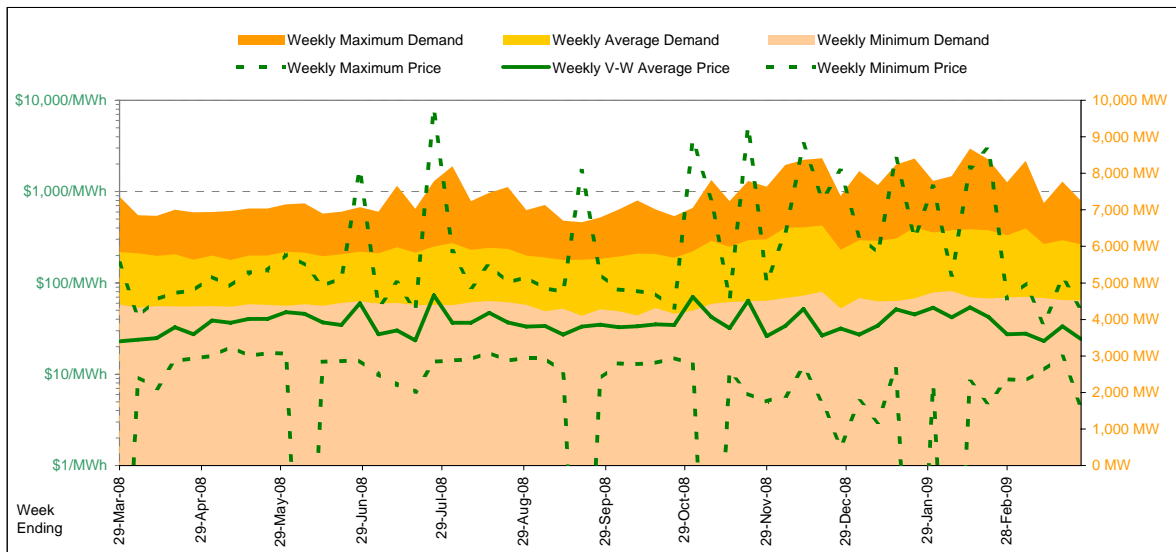
  

Implied Prices for Off-Peak Load (All other times)		CalYear	FinYear Ending	Q1	Q2	Q3	Q4
		2009	27.98	28.32	27.70	29.41	26.62
		2010	25.73	27.81	27.96	25.16	23.00
		2011	61.92	41.18	57.02	60.75	67.30
		2012					



Current Year

		Week 13 Ending Saturday			52-Weeks Ending Sat	
		28-Mar-09	% change	29-Mar-08	28-Mar-09	Date Occurred
Energy (MWh)	Total	1,018,038	4%	982,656	52,342,709	
	Maximum	7,248	-2%	7,361	8,677	9-Feb-09
	Average	6,060	4%	5,849	5,992	
	Minimum	4,520	2%	4,411	4,100	20-Sep-08
Regional Load Factor (%)		84%		79%	69%	
Trading Price (\$/MWh)	Maximum	51.73	-69%	164.42	8058.07	
	Volume-Weighted Ave	24.24	6%	22.92	37.87	
	Time-Weighted Ave	23.29	6%	21.95	35.60	
	Minimum	4.46	103%	-162.49	-180.89	
Temperature °C (Brisbane)	Maximum	29.4	-5%	31.0	36.1	
	Minimum	17.3	-3%	17.9	3.7	

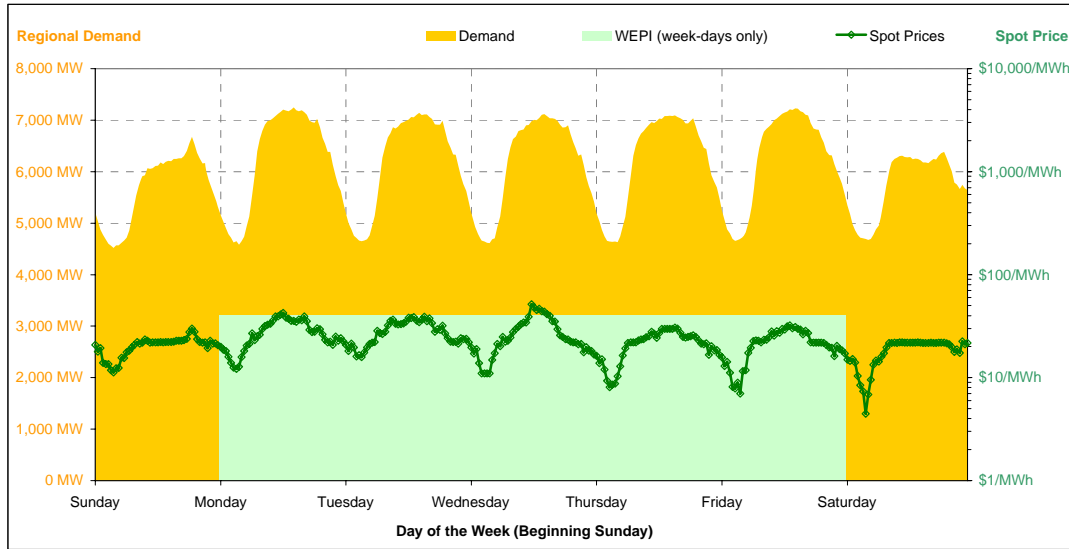


Note that prices below \$1/MWh have been reset to \$1/MWh for the purposes of this display

Current Week

All Data in this table is shown in MWh								
	Weekly Total	Sunday	Monday	Tuesday	Wednesday	Thursday	Friday	Saturday
<b>Total Production by Generation Company</b>								
AGL	26,027	0	4,256	5,434	4,613	4,507	4,510	2,708
Babcock & Brown Power	41,308	4,913	5,972	7,307	6,699	5,432	7,126	3,860
Callide Power Trading	78,145	15,882	9,356	9,244	8,863	8,689	10,654	15,459
CS Energy	285,749	39,836	41,720	39,978	41,751	41,834	40,155	40,476
Millmerran Energy Trader	107,676	10,440	10,439	10,332	14,715	20,480	20,438	20,834
Origen Energy	5,216	749	722	749	749	749	749	749
Stanwell	317,888	41,826	49,199	49,615	48,102	45,802	45,825	37,521
Tarong Energy	167,360	23,111	24,722	24,860	25,220	23,558	22,996	22,894
Tarong North Trader	45,827	5,622	7,346	6,566	6,169	7,282	7,267	5,575
Other QLD Plants	0	0	0	0	0	0	0	0
<b>Total internal production</b>	<b>1,075,194</b>	<b>142,377</b>	<b>153,730</b>	<b>154,084</b>	<b>156,880</b>	<b>158,331</b>	<b>159,718</b>	<b>150,075</b>
(Load at Pumped Storage)	-403	0	0	0	0	-2	-401	0
<b>Net internal production</b>	<b>1,074,791</b>	<b>142,377</b>	<b>153,730</b>	<b>154,084</b>	<b>156,880</b>	<b>158,330</b>	<b>159,317</b>	<b>150,075</b>
<b>Percentage each company's production represents of the total internal production</b>								
AGL	2.4%	0.0%	2.8%	3.5%	2.9%	2.8%	2.8%	1.8%
Babcock & Brown Power	3.8%	3.5%	3.9%	4.7%	4.3%	3.4%	4.5%	2.6%
Callide Power Trading	7.3%	11.2%	6.1%	6.0%	5.6%	5.5%	6.7%	10.3%
CS Energy	26.6%	28.0%	27.1%	25.9%	26.6%	26.4%	25.1%	27.0%
Millmerran Energy Trader	10.0%	7.3%	6.8%	6.7%	9.4%	12.9%	12.8%	13.9%
Origen Energy	0.5%	0.5%	0.5%	0.5%	0.5%	0.5%	0.5%	0.5%
Stanwell	29.6%	29.4%	32.0%	32.2%	30.7%	28.9%	28.7%	25.0%
Tarong Energy	15.6%	16.2%	16.1%	16.1%	16.1%	14.9%	14.4%	15.3%
Tarong North Trader	4.3%	3.9%	4.8%	4.3%	3.9%	4.6%	4.5%	3.7%
Other QLD Plants	0.0%	0.0%	0.0%	0.0%	0.0%	0.0%	0.0%	0.0%
<b>Total Percentage</b>	<b>100.0%</b>	<b>100.0%</b>	<b>100.0%</b>	<b>100.0%</b>	<b>100.0%</b>	<b>100.0%</b>	<b>100.0%</b>	<b>100.0%</b>

Current Week (continued)



	Sunday	Monday	Tuesday	Wednesday	Thursday	Friday	Saturday
<b>For the Current Week</b>							
Total Energy (MWh)	135,906	149,936	148,437	147,753	148,754	149,709	137,545
Trading Demand Target (MW)	Maximum	6,675	7,248	7,145	7,120	7,091	6,382
	Average	5,663	6,247	6,185	6,156	6,198	6,238
	Minimum	4,520	4,581	4,648	4,613	4,633	4,656
Regional Load Factor (%)	85%	86%	87%	86%	87%	86%	90%
Wholesale Electricity Price Index (WEPI)	N/A	40.52	40.52	40.34	40.47	40.46	N/A
	Maximum	29.97	42.59	39.02	51.73	30.52	32.12
	Volume-Weighted Ave	20.93	28.42	28.64	27.68	22.30	22.23
Trading Price (\$/MWh)	Time-Weighted Ave	20.49	27.26	27.74	26.44	21.43	21.33
	Minimum	11.24	12.15	15.81	10.99	8.10	6.99
	Maximum	28.6	28.6	28.4	28.5	28.6	29.4
Temperature °C (Brisbane)	19.3	18.3	18.1	18.0	17.7	17.3	19.9
<b>Percentage Change from Same Week Last Year</b>							
Total Energy (MWh)	7%	14%	0%	-2%	0%	3%	5%
Trading Demand Target (MW)	Maximum	9%	12%	-0%	-3%	1%	5%
	Average	7%	14%	0%	-2%	0%	5%
	Minimum	2%	4%	3%	-1%	-1%	2%
Wholesale Electricity Price Index (WEPI)	N/A	-22%	-24%	-24%	-23%	-23%	N/A
Trading Price (\$/MWh)	Maximum	21%	76%	32%	-69%	5%	11%
	Volume-Weighted Ave	12%	46%	24%	-19%	12%	-2%
	Time-Weighted Ave	11%	44%	24%	-18%	15%	-4%
Temperature °C (Brisbane)	Minimum	-4%	68%	37%	-24%	105%	-30%
	Maximum	6%	10%	-2%	-8%	19%	17%
	Minimum	6%	-2%	1%	-4%	-13%	-8%
<b>For the Same Week Last Year</b>							
Total Energy (MWh)	126,604	131,641	148,232	151,107	148,430	145,996	130,647
Trading Demand Target (MW)	Maximum	6,117	6,452	7,158	7,361	7,047	6,909
	Average	5,275	5,485	6,176	6,296	6,185	6,083
	Minimum	4,423	4,411	4,513	4,637	4,695	4,571
Regional Load Factor (%)	86%	85%	86%	86%	88%	88%	88%
Wholesale Electricity Price Index (WEPI)	N/A	52.08	53.48	53.25	52.77	52.45	N/A
	Maximum	24.77	24.26	29.47	164.42	29.11	28.85
	Volume-Weighted Ave	18.67	19.45	23.02	34.29	19.94	22.74
Trading Price (\$/MWh)	Time-Weighted Ave	18.40	18.98	22.36	32.43	18.66	22.28
	Minimum	11.75	7.23	11.56	14.50	-162.49	9.97
	Maximum	27.0	25.9	29.1	31.0	24.1	25.2
Temperature °C (Brisbane)	18.2	18.7	17.9	18.8	20.3	18.9	18.7

Long-Term Trends

This table contains electricity futures pricing, supplied by d-cyphatrade. All data other than flat and peak quarterly pricing is implied.

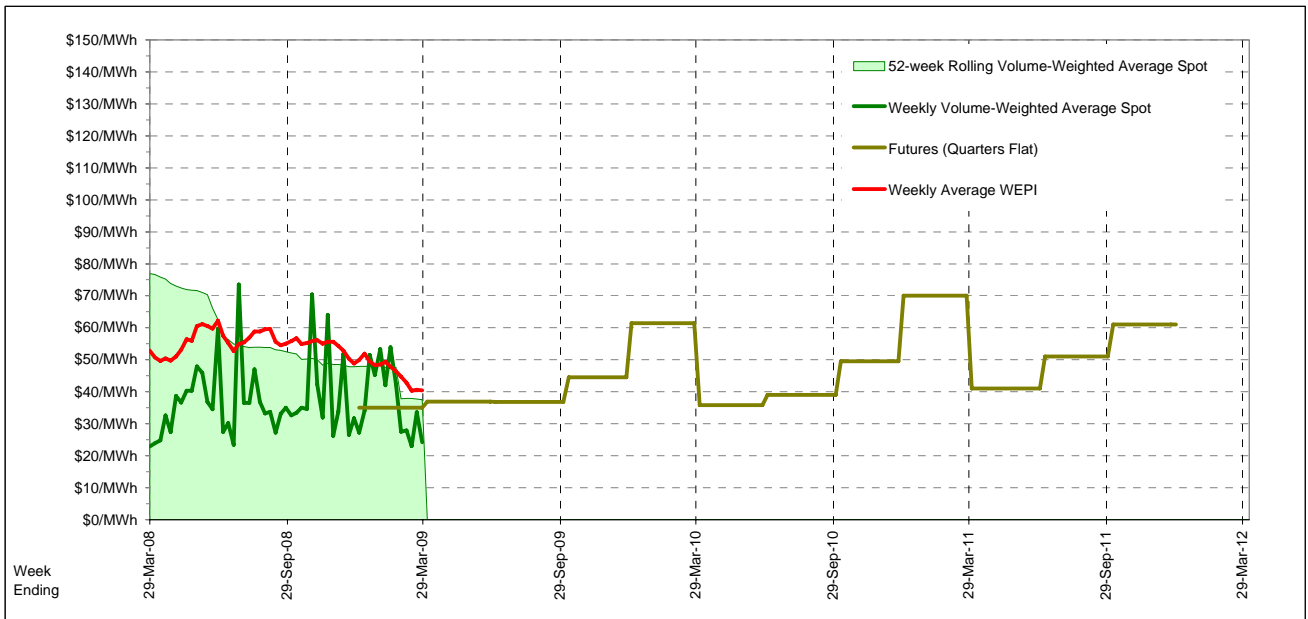
<i>Futures settlement prices</i> for flat load (all times)	CalYear	FinYear Ending	Q1	Q2	Q3	Q4
	2009	38.33	35.00	36.90	36.85	44.50
	2010	46.38	44.58	61.45	35.80	39.00
	2011	55.72	49.80	70.00	41.05	51.00
	2012					61.00

<i>Futures settlement prices</i> for peak load (7am-10pm M-F)	CalYear	FinYear Ending	Q1	Q2	Q3	Q4
	2009	53.65	48.70	49.75	48.40	67.50
	2010	70.91	66.78	102.50	49.00	56.00
	2011	86.14	82.80	140.00	60.00	60.00
	2012					85.00

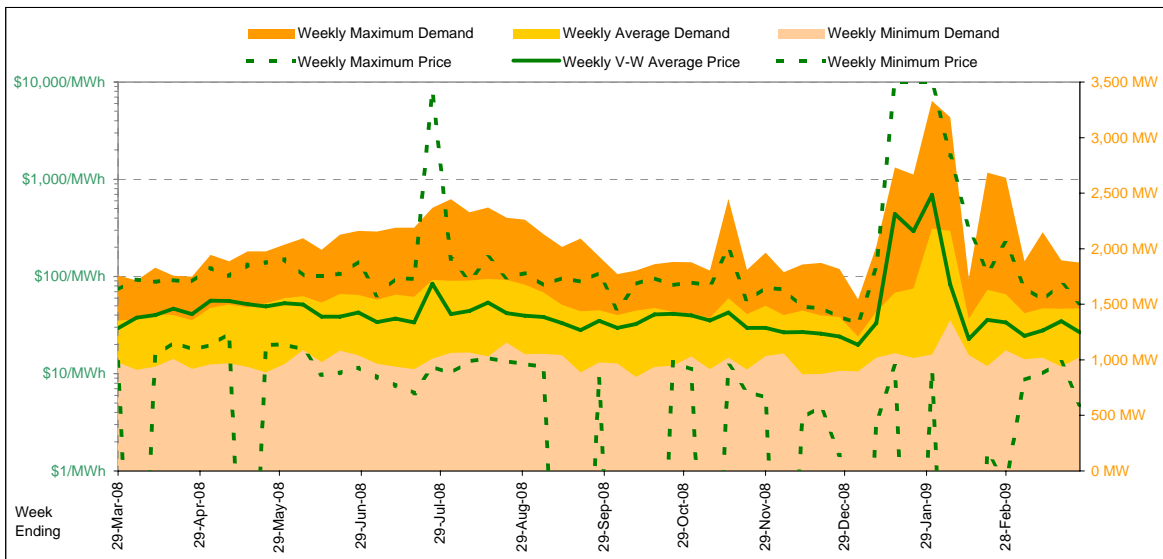
  

<i>Implied Prices</i> for Off-Peak Load (All other times)	CalYear	FinYear Ending	Q1	Q2	Q3	Q4
	2009	25.98	23.95	26.54	27.54	25.95
	2010	26.60	26.68	28.35	25.15	25.29
	2011	31.19	23.19	13.55	25.77	43.74
	2012					41.65



Current Year

Energy (MWh)	Total	Week 13 Ending Saturday		52-Weeks Ending Sat		Date Occurred
		28-Mar-09	% change	29-Mar-08	28-Mar-09	
		245,617	8%	227,273	13,356,131	
Trading Demand (MW)	Maximum	1,874	7%	1,759	3,331	28-Jan-09
	Average	1,462	8%	1,353	1,529	
	Minimum	1,026	5%	976	847	11-Oct-08
Regional Load Factor (%)		78%		77%	46%	
Trading Price (\$/MWh)	Maximum	52.91	-27%	72.87	9999.92	
	Volume-Weighted Ave	26.60	-9%	29.38	71.15	
	Time-Weighted Ave	25.51	-11%	28.59	53.40	
	Minimum	4.77	-64%	13.21	-1000.00	
Temperature °C (Adelaide)	Maximum	29.3	1%	28.9	45.7	
	Minimum	10.2	12%	9.1	0.7	

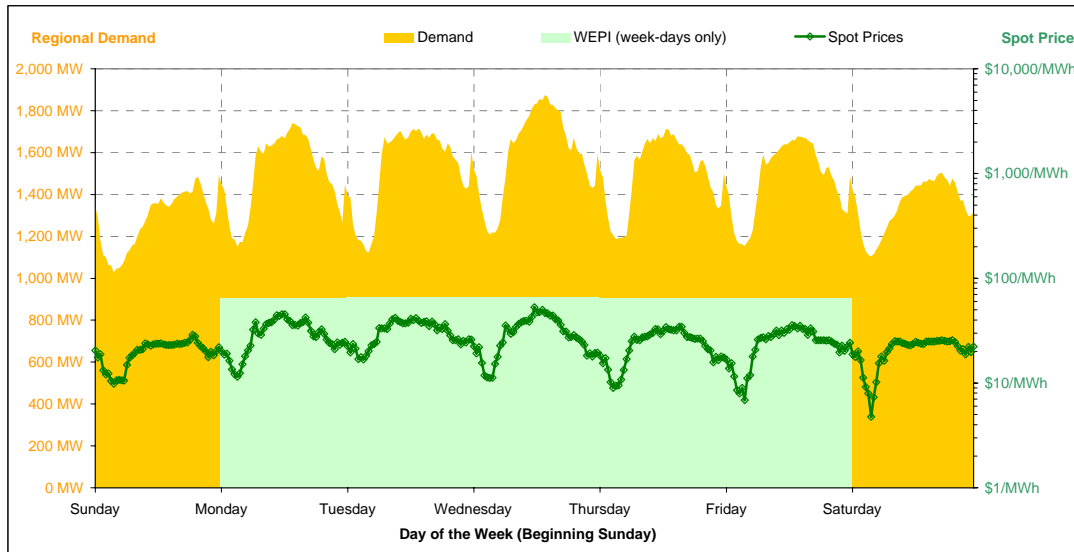


Note that prices below \$1/MWh have been reset to \$1/MWh for the purposes of this display

Current Week

All Data in this table is shown in MWh								
	Weekly Total	Sunday	Monday	Tuesday	Wednesday	Thursday	Friday	Saturday
<b>Total Production by Generation Company</b>								
AGL	22,216	1,856	3,563	3,644	4,837	3,396	3,018	1,903
International Power (Pelican Point)	64,241	8,436	9,632	9,750	9,431	9,045	9,264	8,684
International Power (Synergen)	0	0	0	0	0	0	0	0
Flinders Power	110,330	16,091	15,579	15,759	15,564	16,347	15,597	15,395
Origin Energy	1,279	0	0	560	472	247	0	0
Osborne	19,176	3,082	3,385	3,444	3,338	3,211	2,717	0
TRUenergy	0	0	0	0	0	0	0	0
Other SA Plants	5,067	839	567	244	326	1,169	1,267	657
<b>Total internal production</b>	<b>222,308</b>	<b>30,303</b>	<b>32,725</b>	<b>33,401</b>	<b>33,967</b>	<b>33,414</b>	<b>31,862</b>	<b>26,638</b>
(Load at Pumped Storage)	0	0	0	0	0	0	0	0
<b>Net internal production</b>	<b>222,308</b>	<b>30,303</b>	<b>32,725</b>	<b>33,401</b>	<b>33,967</b>	<b>33,414</b>	<b>31,862</b>	<b>26,638</b>
<b>Percentage each company's production represents of the total internal production</b>								
AGL	10.0%	6.1%	10.9%	10.9%	14.2%	10.2%	9.5%	7.1%
International Power (Pelican Point)	28.9%	27.8%	29.4%	29.2%	27.8%	27.1%	29.1%	32.6%
International Power (Synergen)	0.0%	0.0%	0.0%	0.0%	0.0%	0.0%	0.0%	0.0%
Flinders Power	49.6%	53.1%	47.6%	47.2%	45.8%	48.9%	49.0%	57.8%
Origin Energy	0.6%	0.0%	0.0%	1.7%	1.4%	0.7%	0.0%	0.0%
Osborne	8.6%	10.2%	10.3%	10.3%	9.8%	9.6%	8.5%	0.0%
TRUenergy	0.0%	0.0%	0.0%	0.0%	0.0%	0.0%	0.0%	0.0%
Other SA Plants	2.3%	2.8%	1.7%	0.7%	1.0%	3.5%	4.0%	2.5%
<b>Total Percentage</b>	<b>100.0%</b>	<b>100.0%</b>	<b>100.0%</b>	<b>100.0%</b>	<b>100.0%</b>	<b>100.0%</b>	<b>100.0%</b>	<b>100.0%</b>

Current Week (continued)



	Sunday	Monday	Tuesday	Wednesday	Thursday	Friday	Saturday
<b>For the Current Week</b>							
Total Energy (MWh)	30,765	36,085	36,646	38,277	36,020	35,415	32,410
Trading Demand Target (MW)	Maximum	1,493	1,740	1,714	1,874	1,712	1,677
	Average	1,282	1,504	1,527	1,595	1,501	1,476
	Minimum	1,026	1,151	1,124	1,209	1,187	1,153
Regional Load Factor (%)	86%	86%	89%	85%	88%	88%	90%
Wholesale Electricity Price Index (WEPI)	N/A	64.53	65.37	65.81	63.85	64.34	N/A
	Maximum	28.98	45.26	41.92	52.91	34.56	35.61
	Volume-Weighted Ave	20.46	30.35	31.56	31.29	24.42	25.08
	Time-Weighted Ave	19.99	29.29	30.70	29.95	23.64	24.22
Trading Price (\$/MWh)	Minimum	9.83	11.53	16.80	11.20	8.99	6.86
	Maximum	22.1	24.1	22.8	25.6	24.6	23.6
	Minimum	15.0	11.6	14.8	16.3	16.2	10.8
Temperature °C (Adelaide)							
<b>Percentage Change from Same Week Last Year</b>							
Total Energy (MWh)	4%	17%	13%	17%	-1%	-1%	9%
Trading Demand Target (MW)	Maximum	6%	17%	10%	23%	0%	6%
	Average	4%	17%	13%	17%	-1%	9%
	Minimum	-0%	8%	6%	24%	5%	13%
Wholesale Electricity Price Index (WEPI)	N/A	-20%	-20%	-20%	-26%	-23%	N/A
	Maximum	-2%	43%	17%	5%	-53%	-53%
	Volume-Weighted Ave	-9%	24%	13%	-4%	-27%	-31%
	Time-Weighted Ave	-10%	21%	12%	-6%	-27%	-31%
Trading Price (\$/MWh)	Minimum	-31%	-31%	27%	-31%	-33%	-65%
	Maximum	-24%	-13%	4%	31%	38%	58%
	Minimum	38%	-19%	-4%	16%	78%	13%
Temperature °C (Adelaide)							
<b>For the Same Week Last Year</b>							
Total Energy (MWh)	29,556	30,788	32,570	32,665	36,347	35,735	29,614
Trading Demand Target (MW)	Maximum	1,414	1,485	1,554	1,527	1,706	1,759
	Average	1,232	1,283	1,357	1,361	1,514	1,489
	Minimum	1,028	1,061	1,060	976	1,128	1,204
Regional Load Factor (%)	87%	86%	87%	89%	89%	85%	87%
Wholesale Electricity Price Index (WEPI)	N/A	81.04	81.82	81.97	86.20	83.39	N/A
	Maximum	29.48	31.74	35.91	50.60	72.87	41.77
	Volume-Weighted Ave	22.46	24.45	27.96	32.45	33.42	32.45
	Time-Weighted Ave	22.13	24.19	27.44	31.69	32.39	31.95
Trading Price (\$/MWh)	Minimum	14.18	16.69	13.21	16.29	13.45	16.07
	Maximum	28.9	27.6	21.9	19.5	17.8	20.7
	Minimum	10.9	14.4	15.4	14.0	9.1	10.9
Temperature °C (Adelaide)							

Long-Term Trends

This table contains electricity futures pricing, supplied by d-cyphatrade. All data other than flat and peak quarterly pricing is implied.

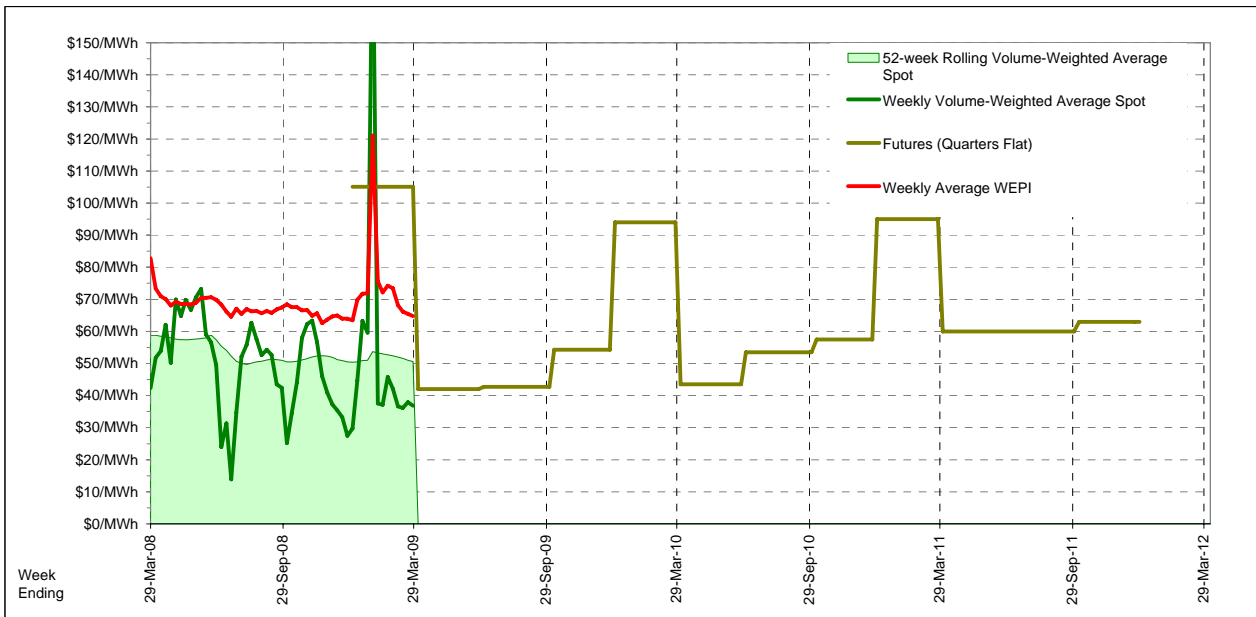
<i>Futures settlement prices</i> for flat load (all times)	CalYear	FinYear Ending	Q1	Q2	Q3	Q4
	2009	60.82	105.05	42.00	42.75	54.25
	2010	62.00	58.50	94.05	43.55	53.45
	2011	69.39	66.34	95.00	60.00	63.00
	2012					

<i>Futures settlement prices</i> for peak load (7am-10pm M-F)	CalYear	FinYear Ending	Q1	Q2	Q3	Q4
	2009	99.12	200.00	62.00	50.70	86.50
	2010	78.02	75.30	102.00	63.00	74.00
	2011	55.88	70.94	100.00	36.50	42.75
	2012					

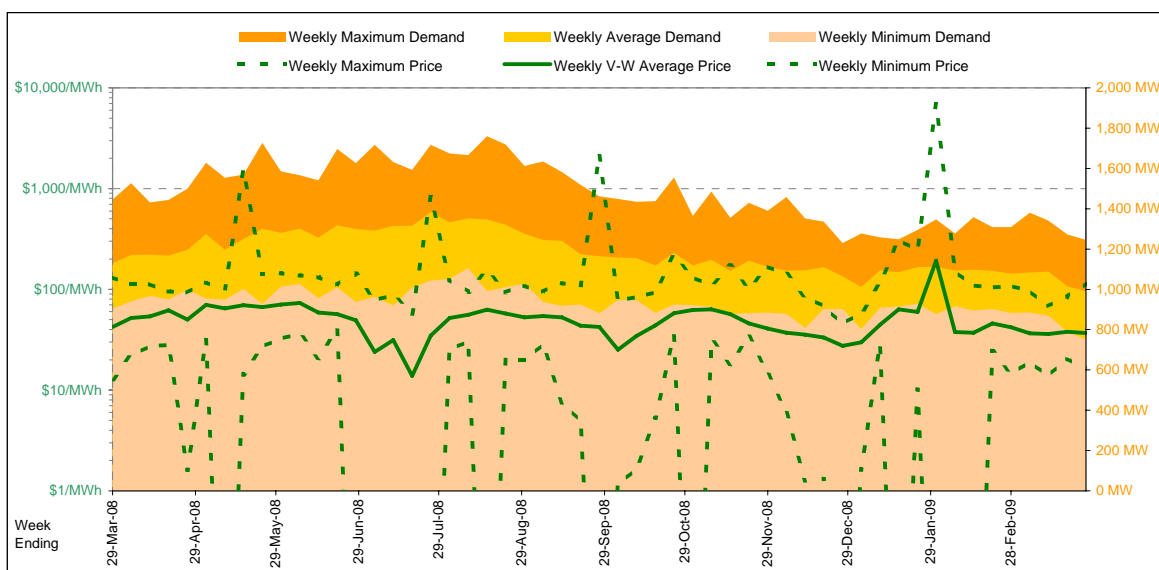
  

<i>Implied Prices</i> for Off-Peak Load (All other times)	CalYear	FinYear Ending	Q1	Q2	Q3	Q4
	2009	29.93	28.48	25.87	36.34	28.24
	2010	49.08	44.95	87.64	27.86	37.68
	2011	80.29	62.63	90.97	78.95	73.91
	2012					



Current Year

		Week 13 Ending Saturday			52-Weeks Ending Sat	
		28-Mar-09	% change	29-Mar-08	28-Mar-09	Date Occurred
Energy (MWh)	Total	166,620	-12%	189,763	10,330,290	
	Maximum	1,245	-14%	1,446	1,760	11-Aug-08
	Average	992	-12%	1,130	1,182	
Trading Demand (MW)	Minimum	751	-17%	904	751	22-Mar-09
	Regional Load Factor (%)	80%		78%	67%	
Trading Price (\$/MWh)	Maximum	115.13	-13%	131.76	6880.22	
	Volume-Weighted Ave	36.85	-13%	42.32	50.97	
	Time-Weighted Ave	36.12	-12%	41.06	49.53	
	Minimum	16.42	28%	12.85	-999.76	
Temperature °C (Hobart)	Maximum	24.5	-10%	27.1	33.5	
	Minimum	10.8	125%	4.8	0.3	

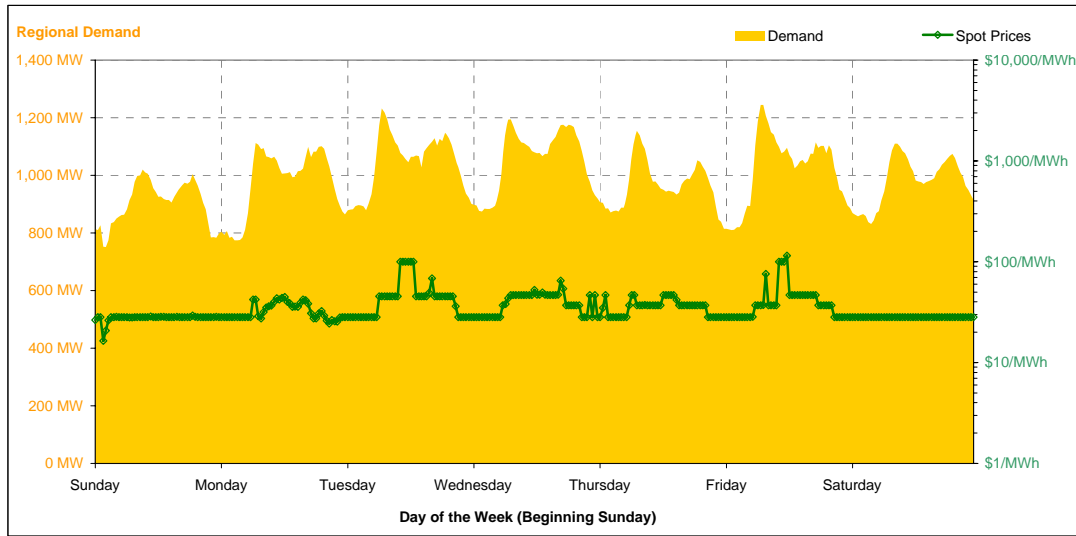


Note that prices below \$1/MWh have been reset to \$1/MWh for the purposes of this display

Current Week

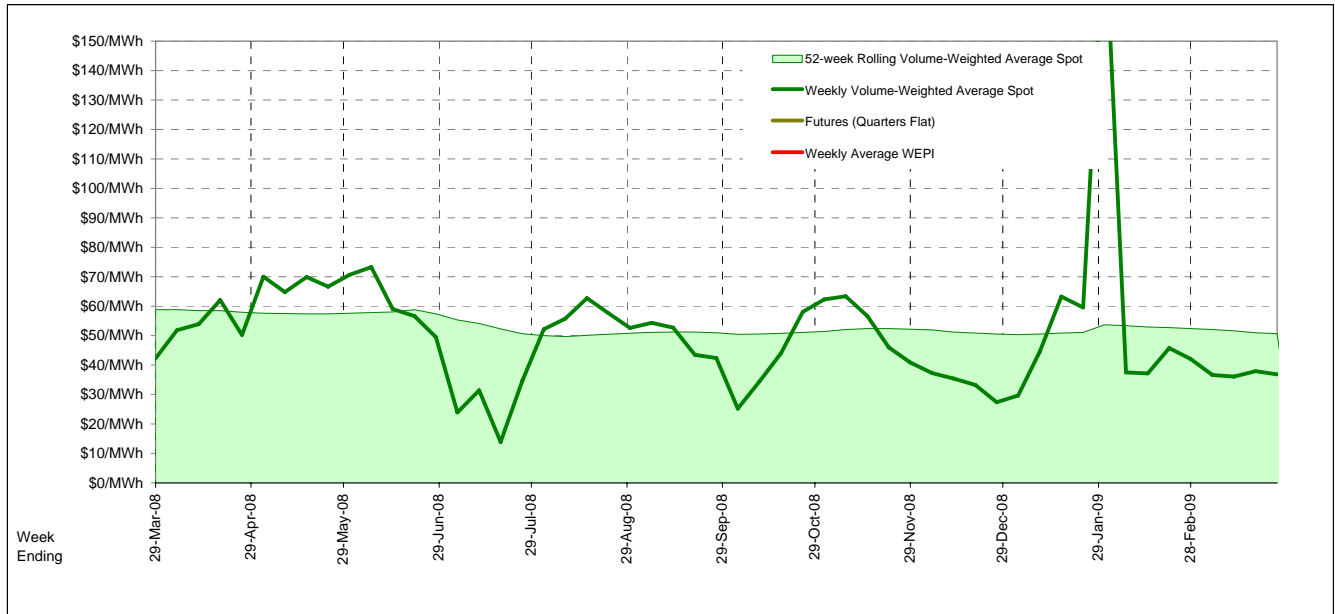
All Data in this table is shown in MWh								
Weekly Total	Sunday	Monday	Tuesday	Wednesday	Thursday	Friday	Saturday	
<b>Total Production by Generation Company</b>								
Hydro Tasmania	93,922	12,114	14,543	15,276	15,638	12,573	12,877	10,902
Bell Bay Power	6,312	0	0	0	155	1,303	2,022	2,832
Other TAS Plants	0	0	0	0	0	0	0	0
<b>Total internal production</b>	<b>100,233</b>	<b>12,114</b>	<b>14,543</b>	<b>15,276</b>	<b>15,793</b>	<b>13,876</b>	<b>14,899</b>	<b>13,734</b>
(Load at Pumped Storage)	0	0	0	0	0	0	0	0
<b>Net internal production</b>	<b>100,233</b>	<b>12,114</b>	<b>14,543</b>	<b>15,276</b>	<b>15,793</b>	<b>13,876</b>	<b>14,899</b>	<b>13,734</b>
<b>Percentage each company's production represents of the total internal production</b>								
Hydro Tasmania	93.7%	100.0%	100.0%	100.0%	99.0%	90.6%	86.4%	79.4%
Bell Bay Power	6.3%	0.0%	0.0%	0.0%	1.0%	9.4%	13.6%	20.6%
Other TAS Plants	0.0%	0.0%	0.0%	0.0%	0.0%	0.0%	0.0%	0.0%
<b>Total Percentage</b>	<b>100.0%</b>	<b>100.0%</b>	<b>100.0%</b>	<b>100.0%</b>	<b>100.0%</b>	<b>100.0%</b>	<b>100.0%</b>	<b>100.0%</b>

Current Week (continued)



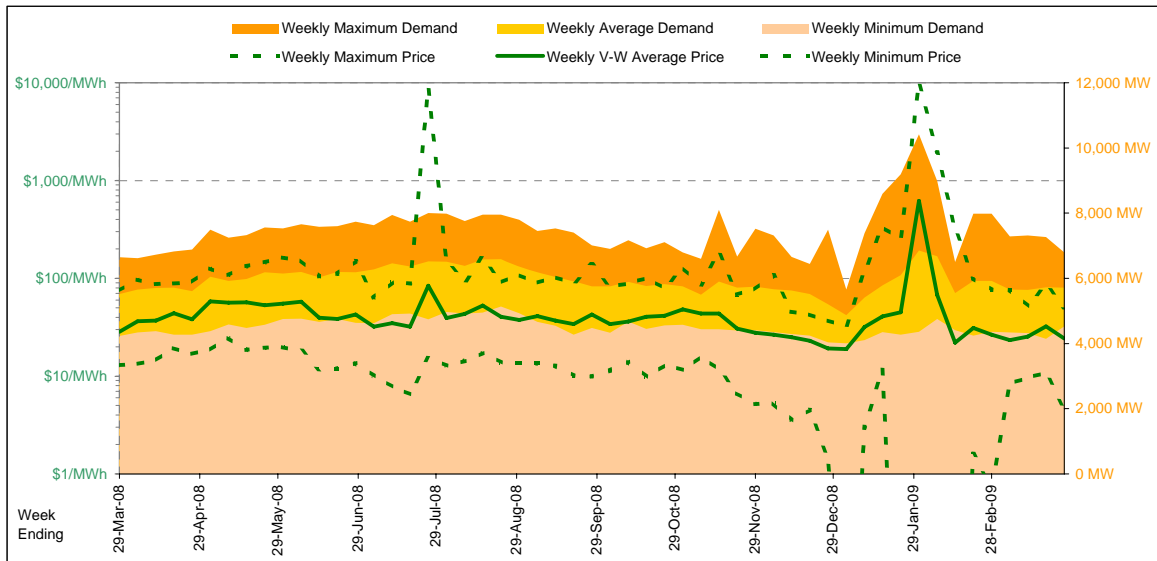
		Sunday	Monday	Tuesday	Wednesday	Thursday	Friday	Saturday
<b>For the Current Week</b>								
Total Energy (MWh)		21,662	23,417	25,035	25,306	23,189	24,562	23,451
Trading Demand Target (MW)	Maximum	1,020	1,112	1,232	1,195	1,154	1,245	1,110
	Average	903	976	1,043	1,054	966	1,023	977
	Minimum	751	774	879	874	815	810	831
Regional Load Factor (%)	Maximum	29.24	44.67	100.28	64.75	46.80	115.13	28.30
	Average	27.90	33.06	47.03	40.32	36.04	43.39	28.26
Trading Price (\$/MWh)	Volume-Weighted Ave	27.82	32.75	46.17	39.68	35.80	42.37	28.26
	Time-Weighted Ave	16.42	24.41	28.20	28.23	28.18	28.18	28.18
Temperature °C (Hobart)	Maximum	19.4	16.1	21.7	21.1	20.4	18.9	24.5
	Minimum	13.8	12.4	11.3	14.2	11.5	10.8	13.7
<b>Percentage Change from Same Week Last Year</b>								
Total Energy (MWh)		-12%	-6%	-6%	-6%	-20%	-17%	-16%
Trading Demand Target (MW)	Maximum	-11%	-2%	0%	-8%	-16%	-14%	-17%
	Average	-12%	-6%	-6%	-6%	-20%	-17%	-16%
	Minimum	-17%	-16%	-7%	-6%	-17%	-21%	-16%
Trading Price (\$/MWh)	Maximum	-22%	27%	80%	-16%	-48%	75%	-79%
	Volume-Weighted Ave	-12%	41%	15%	-18%	-24%	-12%	-44%
	Time-Weighted Ave	-12%	40%	15%	-18%	-23%	-13%	-42%
Temperature °C (Hobart)	Maximum	-35%	58%	119%	12%	11%	11%	12%
	Minimum	-9%	-38%	-20%	29%	61%	9%	53%
Minimum		30%	-11%	-26%	23%	58%	125%	69%
<b>For the Same Week Last Year</b>								
Total Energy (MWh)		24,730	24,945	26,580	26,908	29,094	29,707	27,800
Trading Demand Target (MW)	Maximum	1,143	1,138	1,231	1,302	1,382	1,446	1,332
	Average	1,030	1,039	1,108	1,121	1,212	1,238	1,158
	Minimum	904	921	943	925	980	1,030	988
Regional Load Factor (%)	Maximum	37.72	35.22	55.76	76.68	90.63	65.83	131.76
	Average	31.80	23.44	41.05	49.24	47.43	49.42	50.24
Trading Price (\$/MWh)	Volume-Weighted Ave	31.67	23.33	40.15	48.23	46.46	48.70	48.86
	Time-Weighted Ave	25.18	15.47	12.85	25.28	25.37	25.42	25.24
Temperature °C (Hobart)	Maximum	21.4	25.8	27.1	16.3	12.7	17.4	16.0
	Minimum	10.6	14.0	15.3	11.5	7.3	4.8	8.1

Long-Term Trends



Current Year

		Week 13 Ending Saturday			52-Weeks Ending Sat	
		28-Mar-09	% change	29-Mar-08	28-Mar-09	Date Occurred
Energy (MWh)	Total	960,130	4%	926,602	51,943,487	
	Maximum	6,792	2%	6,651	10,415	29-Jan-09
	Average	5,715	4%	5,515	5,946	
Trading Demand (MW)	Maximum	4,526	7%	4,230	4,004	28-Dec-08
	Average	84%		83%	57%	
	Minimum					
Regional Load Factor (%)	Maximum	50.26	-33%	74.77	10000.00	
	Volume-Weighted Ave	24.28	-15%	28.44	52.43	
	Time-Weighted Ave	23.33	-16%	27.63	45.05	
	Minimum	4.61	-64%	12.94	-496.71	
Trading Price (\$/MWh)	Maximum	26.7	-7%	28.6	46.4	
	Volume-Weighted Ave	9.7	4%	9.3	2.2	
	Minimum					

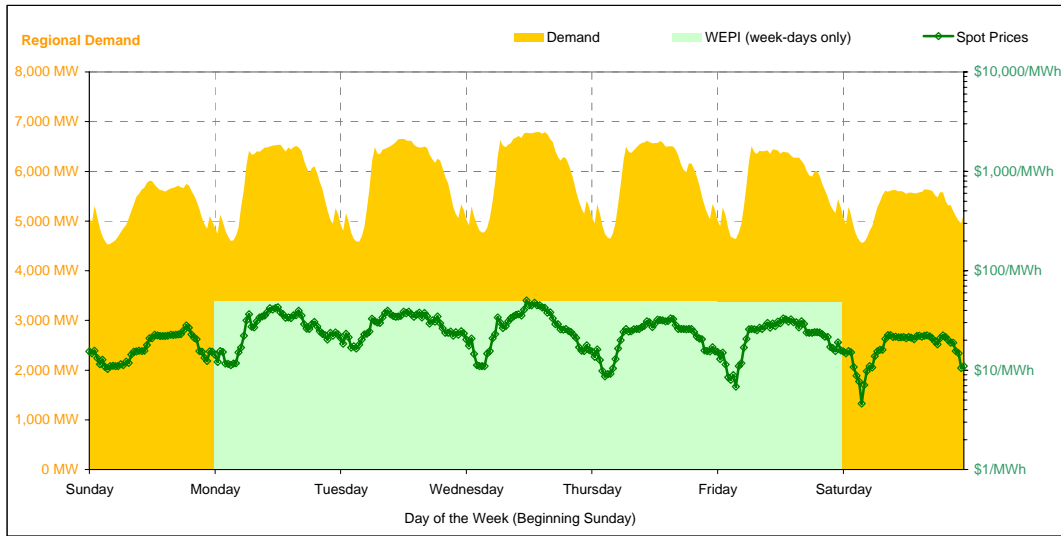


Note that prices below \$1/MWh have been reset to \$1/MWh for the purposes of this display

Current Week

All Data in this table is shown in MWh								
	Weekly Total	Sunday	Monday	Tuesday	Wednesday	Thursday	Friday	Saturday
<b>Total Production by Generation Company</b>								
AGL	3,014	367	497	499	391	494	603	163
Anglesea	26,803	3,804	3,840	3,810	3,835	3,836	3,840	3,840
Babcock & Brown Power	808	35	35	145	212	184	164	35
Ecogen Energy	10,057	0	160	3,263	4,613	2,022	0	0
Energy Brix	24,616	3,428	3,348	3,574	3,701	3,711	3,440	3,416
International Power (Hazelwood)	232,966	32,487	32,641	32,871	32,618	32,859	33,094	36,398
Loy Yang B	170,854	24,829	24,769	23,184	25,039	24,348	24,510	24,177
Loy Yang Power	346,194	48,590	49,508	46,328	49,843	51,075	50,765	50,087
Snowy Hydro	25,064	0	5,935	5,266	5,761	4,218	3,884	0
TRUenergy	244,161	35,040	34,998	35,135	34,952	34,403	34,653	34,982
Other VIC Plants	0	0	0	0	0	0	0	0
<b>Total internal production</b>	<b>1,084,535</b>	<b>148,578</b>	<b>155,729</b>	<b>154,072</b>	<b>160,963</b>	<b>157,147</b>	<b>154,951</b>	<b>153,097</b>
(Load at Pumped Storage)	0	0	0	0	0	0	0	0
<b>Net internal production</b>	<b>1,084,535</b>	<b>148,578</b>	<b>155,729</b>	<b>154,072</b>	<b>160,963</b>	<b>157,147</b>	<b>154,951</b>	<b>153,097</b>
<b>Percentage each company's production represents of the total internal production</b>								
AGL	0.3%	0.2%	0.3%	0.3%	0.2%	0.3%	0.4%	0.1%
Anglesea	2.5%	2.6%	2.5%	2.5%	2.4%	2.4%	2.5%	2.5%
Babcock & Brown Power	0.1%	0.0%	0.0%	0.1%	0.1%	0.1%	0.1%	0.0%
Ecogen Energy	0.9%	0.0%	0.1%	2.1%	2.9%	1.3%	0.0%	0.0%
Energy Brix	2.3%	2.3%	2.1%	2.3%	2.3%	2.4%	2.2%	2.2%
International Power (Hazelwood)	21.5%	21.9%	21.0%	21.3%	20.3%	20.9%	21.4%	23.8%
Loy Yang B	15.8%	16.7%	15.9%	15.0%	15.6%	15.5%	15.8%	15.8%
Loy Yang Power	31.9%	32.7%	31.8%	30.1%	31.0%	32.5%	32.8%	32.7%
Snowy Hydro	2.3%	0.0%	3.8%	3.4%	3.6%	2.7%	2.5%	0.0%
TRUenergy	22.5%	23.6%	22.5%	22.8%	21.7%	21.9%	22.4%	22.8%
Other VIC Plants	0.0%	0.0%	0.0%	0.0%	0.0%	0.0%	0.0%	0.0%
<b>Total Percentage</b>	<b>100.0%</b>	<b>100.0%</b>	<b>100.0%</b>	<b>100.0%</b>	<b>100.0%</b>	<b>100.0%</b>	<b>100.0%</b>	<b>100.0%</b>

Current Week (continued)



		Sunday	Monday	Tuesday	Wednesday	Thursday	Friday	Saturday
<b>For the Current Week</b>								
	Total Energy (MWh)	126,731	139,711	141,287	144,480	141,446	139,288	127,188
Trading Demand Target (MW)	Maximum	5,810	6,538	6,654	6,792	6,618	6,506	5,639
	Average	5,280	5,821	5,887	6,020	5,894	5,804	5,299
	Minimum	4,526	4,600	4,588	4,769	4,641	4,639	4,563
	Regional Load Factor (%)	91%	89%	88%	89%	89%	89%	94%
	Wholesale Electricity Price Index (WEPI)	N/A	49.11	49.53	49.63	49.01	48.82	N/A
Trading Price (\$/MWh)	Maximum	28.23	42.95	39.47	50.26	33.01	33.06	22.48
	Volume-Weighted Ave	17.55	28.27	29.78	29.09	23.24	23.11	17.49
	Time-Weighted Ave	17.21	27.21	28.99	27.86	22.45	22.37	17.19
	Minimum	10.29	11.22	16.51	10.97	8.63	6.84	4.61
Temperature °C (Melbourne)	Maximum	25.6	19.9	21.1	23.9	24.0	20.5	26.7
	Minimum	20.4	14.7	13.8	15.7	15.4	12.7	9.7
<b>Percentage Change from Same Week Last Year</b>								
	Total Energy (MWh)	7%	12%	3%	5%	-0%	-0%	-0%
Trading Demand Target (MW)	Maximum	7%	11%	3%	6%	1%	-2%	-3%
	Average	7%	12%	3%	5%	-0%	-0%	-0%
	Minimum	7%	7%	3%	5%	-1%	-2%	2%
	Wholesale Electricity Price Index (WEPI)	N/A	4%	3%	5%	3%	4%	N/A
Trading Price (\$/MWh)	Maximum	5%	45%	11%	-5%	-56%	-21%	-57%
	Volume-Weighted Ave	-16%	23%	7%	-11%	-29%	-26%	-41%
	Time-Weighted Ave	-16%	20%	7%	-12%	-29%	-27%	-41%
	Minimum	-20%	-26%	27%	-32%	-37%	-56%	-66%
Temperature °C (Melbourne)	Maximum	-8%	-30%	-17%	25%	44%	11%	53%
	Minimum	85%	-23%	-20%	17%	66%	32%	-6%
<b>For the Same Week Last Year</b>								
	Total Energy (MWh)	118,395	124,198	136,757	138,238	141,579	139,961	127,475
Trading Demand Target (MW)	Maximum	5,444	5,882	6,469	6,399	6,583	6,651	5,813
	Average	4,933	5,175	5,698	5,760	5,899	5,832	5,311
	Minimum	4,230	4,310	4,474	4,548	4,701	4,749	4,489
	Regional Load Factor (%)	91%	88%	88%	90%	90%	88%	91%
	Wholesale Electricity Price Index (WEPI)	N/A	47.22	48.13	47.48	47.41	46.73	N/A
Trading Price (\$/MWh)	Maximum	26.98	29.58	35.55	52.91	74.77	41.71	52.37
	Volume-Weighted Ave	20.79	22.98	27.72	32.53	32.76	31.17	29.42
	Time-Weighted Ave	20.56	22.63	27.05	31.74	31.80	30.65	29.01
	Minimum	12.94	15.17	12.96	16.13	13.67	15.63	13.60
Temperature °C (Melbourne)	Maximum	27.9	28.6	25.3	19.1	16.7	18.4	17.4
	Minimum	11.0	19.1	17.3	13.4	9.3	9.6	10.3

Long-Term Trends

This table contains electricity futures pricing, supplied by d-cyphatrade. All data other than flat and peak quarterly pricing is implied.

		CalYear	FinYear Ending	Q1	Q2	Q3	Q4
<b>Actual Prices for Flat Load (All Times)</b>	2009	46.74		62.60	40.50	43.00	41.15
	2010	51.49	48.95	68.50	43.50	47.45	46.80
	2011	60.70	57.00	81.25	53.00	54.45	54.45
	2012						
<b>Actual Prices for Peak Load (7am-10pm M-F)</b>	2009	71.24		114.75	56.25	57.75	58.00
	2010	74.71	72.10	115.25	59.25	62.00	64.00
	2011	77.57	78.40	139.20	50.20	57.20	65.55
	2012						
<b>Implied Prices for Off-Peak Load (All other times)</b>	2009	26.98		20.54	27.80	31.10	27.56
	2010	32.76	30.28	30.80	30.80	35.72	32.93
	2011	47.10	39.74	34.52	55.26	52.23	45.50
	2012						

