

CLP buys Roaring 40s China wind farm portfolio

Hydro Tasmania has announced the sale of Roaring 40s' China wind farm portfolio to its joint venture partner, the CLP Group. The remainder of the Asian part of the business, including the Khandke project in India, is also expected to be sold to CLP in the next few weeks.

Hydro Tasmania says this will enable Roaring 40s to focus on emerging renewable energy growth opportunities in Australia.

Roaring 40s, established in 2005 as a 50-50 joint venture between Hydro Tasmania and the CLP Group, has a portfolio of wind farm developments in Australia, China and India.

The sale by Roaring 40s Renewable Energy Pty Ltd to CLP of its Chinese business will generate \$66 million for Hydro Tasmania's 50 per cent share.

The sale of the Khandke Wind Farm in India is expected to result in an additional cash payment of around \$15.5 million, making a total return to Hydro Tasmania of approximately \$81.5 million.

The combined sale will see Roaring 40s receive approximately \$163 million in equity capital for renewable energy projects in Australia with the Musselroe Wind Farm in Tasmania one of the priority projects.

Under the sale agreement, Roaring 40s will continue to operate in Australia as a 50-50 joint venture between Hydro Tasmania and CLP.

Its current Australian portfolio includes full ownership of two operational wind farms at Woolnorth in Tasmania totalling 140 MW, a 50 per cent share in the 66 MW Cathedral Rocks Wind Farm in South Australia and further development projects across a number of States.

Hydro Tasmania Chair Dr David Crean says the current Federal Government's support for renewable energy options provides a positive climate for re-engaging with the Australian renewable market.

"The Roaring 40s joint venture was created in 2005 as a result of the previous Federal Government not extending the Mandatory Renewable Energy Target and significant investment opportunities in Asia," Dr Crean says.

"Over the last three years the Roaring 40s joint venture has made a significant mark in a competitive international market. Its focus has been on capital investment with all of the returns being reinvested in new projects in China and India," he says.

"The sale of the Chinese portfolio to CLP will enable Roaring 40s to concentrate on market opportunities in Tasmania and nationally, which are growing as a result of a positive shift in federal policy. Our focus will be on developing Musselroe in Tasmania and Waterloo in South Australia," says Dr Crean.

Roaring 40s' Asian portfolio includes three operating wind farms and seven under development in China, as well as a project being developed in India.

This week's volume-weighted electricity price (\$/MWh)

NSW:	\$39.09
Vic:	\$40.19
Qld:	\$32.38
SA:	\$68.51
Tas:	\$78.30

6 – 7 May 2009

EnergyAustralia will be hosting the annual **Electricity Supply Industry Field Days** event at The Dome, Sydney Showground, Sydney Olympic Park, on 6 and 7 May 2009. The event comprises an exhibition, seminar, competitions and demonstrations all aimed at further improving safety training and awareness for those associated with the electricity, utilities and infrastructure industries. The theme for Field Days 2009 is “Watts New – Watts Safe”.

Accredited training programs will again offer the chance for industry workers to improve their qualifications by signing up for safety-related training courses during the event. Participation in the two-day event is welcome from any people or businesses with an interest in electrical safety in the workplace and entry is free for all delegates.

To attend or exhibit at Field Days 2009, or to obtain further details, visit www.fielddayswithenergy.com.au.

22 September 2009

A **Climate Change Adaptation Information Sharing Forum** will be held in Canberra on 22 September 2009. The aim of the forum is to share information on how organisations, communities and regions are adapting to climate change. Participants will learn of experiences and developments underway across many sectors. It will enable delegates to identify relevant information and players which are needed to build better networks and partnerships. The forum will not address the causes of climate change, projections of changes, or ways to mitigate climate change. Forum organisers are currently seeking presentations. Potential presenters are requested to email admin@securityresearch.org.au the title of their proposed address by 30 June, and a few dot points to explain the topic. No abstract is required.

For more information visit www.climatechange-infrastructure.org.au.

Jobs on Offer

List industry jobs

esaa Full Members are invited to submit industry-related employment opportunities. This is a complimentary service. Email notices to newseditor@esaa.com.au by close of business Thursday.

Switching Coordinator

Transend owns and operates Tasmania's electricity transmission system. The company provides its staff with opportunities to have excellent careers whilst having quality time with families and friends.

Transend Networks is seeking a **Switching Co-ordinator**, based in Hobart, Tasmania, to be responsible for the planning and compilation of switching plans for Transend's power system operations including capital and non-capital works in accordance with the relevant rules, acts and policies. The successful applicant will have an associate diploma in Electrical Engineering or equivalent, with appropriate experience in the operation and maintenance of HV and EHV assets. The role requires advanced communication and time management skills, and ability to work within a team environment.

The role statement is available via the careers section at www.transend.com.au or by emailing recruitment@transend.com.au. Applications close 15 April 2009.

Victorian Solar Industry Development program

Solar Industry Fellowships: A chance to be sponsored to work overseas

The Victorian Department of Primary Industries is seeking applicants to be a part of the **Victorian Solar Industry Development program**. The fellowships provide A\$30,000 for travel overseas to work with major solar companies, to develop expertise for application in Victoria. The fellowships are open to Victorian based professionals.

Applications are to be submitted by Friday 1 May 2009. The fellowship program will run from 1 July 2009 to 30 June 2010.

Fellowship application forms and guidelines can be found at:
www.dpi.vic.gov.au/solarfellowships.

For further information contact:
The Victorian Solar Industry Fellowships Secretariat
The Department of Primary Industries
Phone: 03 9658 4179
Email: solar.fellowships@dpi.vic.gov.au.

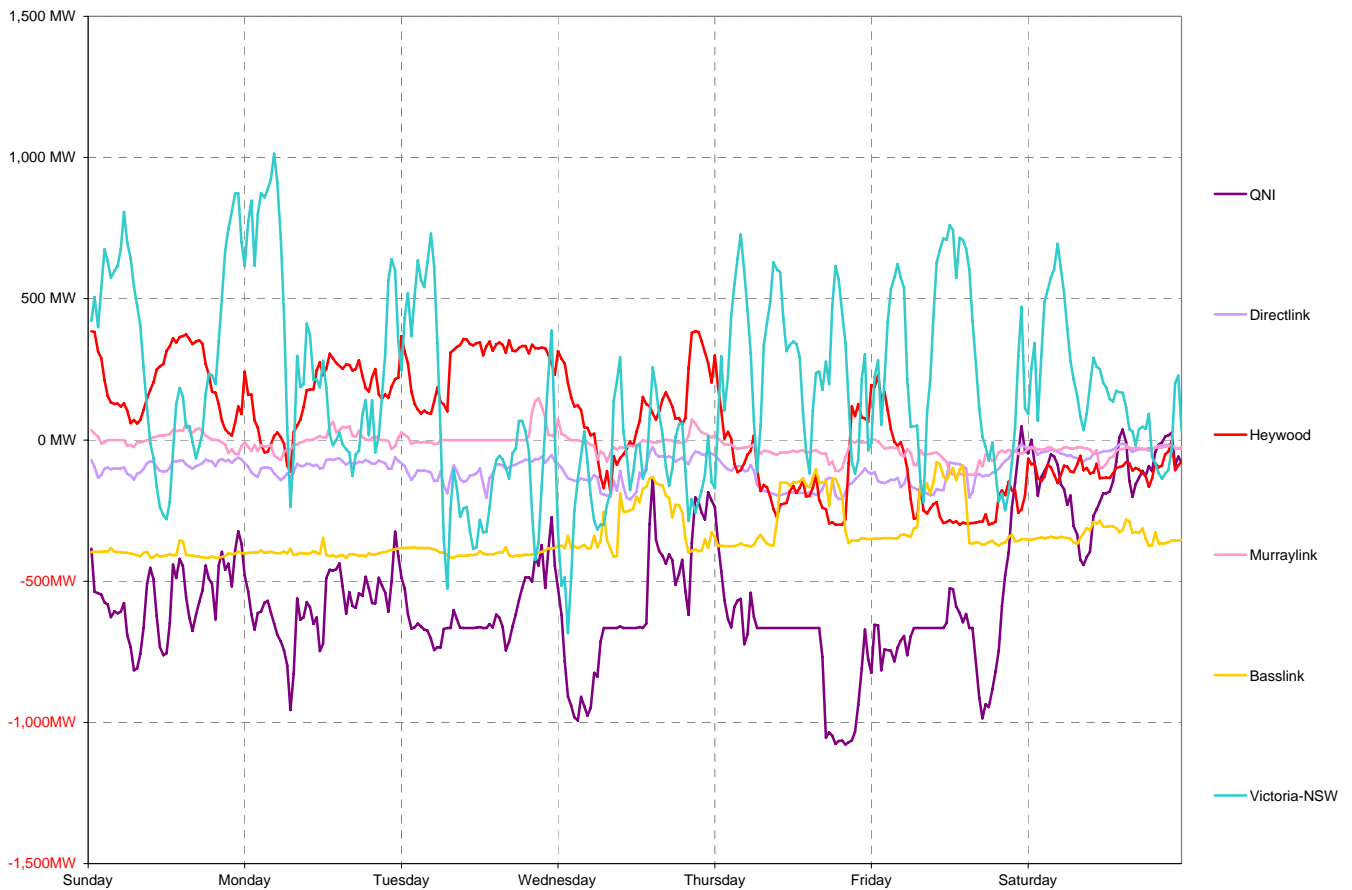
National Electricity Market Report

Week 14 Ending Saturday 04-Apr-09

Daily Inter-Regional Energy Flow

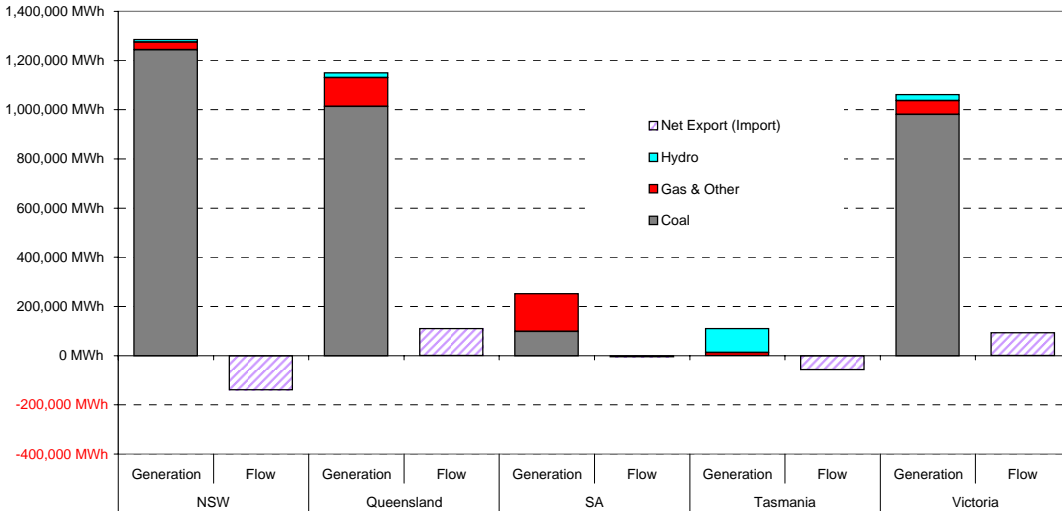
	Daily Net Exports (or Imports)							Weekly Total
	Sunday	Monday	Tuesday	Wednesday	Thursday	Friday	Saturday	
For the Current Week								
NSW	-23,554	-23,778	-17,263	-13,816	-28,265	-24,395	-8,561	-139,631
Queensland	15,679	16,340	17,196	16,684	21,502	17,913	4,375	109,687
South Australia	-5,089	-3,597	-6,873	-2,281	3,629	5,716	3,165	-5,330
Tasmania	-9,678	-9,599	-9,547	-7,228	-6,588	-6,817	-8,071	-57,527
Victoria	22,642	20,634	16,487	6,642	9,722	7,584	9,092	92,801
MWh Change from Same Week Last Year								
NSW	-10,864	-5,630	-2,368	4,360	-16,408	-16,427	380	-46,957
Queensland	-10,320	-9,001	-5,890	-7,309	3,077	4,229	-11,885	-37,099
South Australia	-4,401	-5,402	-5,296	-3,354	4,321	11,578	11,877	9,324
Tasmania	590	856	965	3,185	2,496	1,388	526	10,004
Victoria	16,947	25,968	23,147	12,642	18,380	8,307	-3,740	101,650
For the Same Week Last Year								
NSW	-12,690	-18,148	-14,895	-18,176	-11,857	-7,968	-8,941	-92,674
Queensland	25,999	25,341	23,086	23,993	18,426	13,684	16,260	146,786
South Australia	-688	1,805	-1,578	1,073	-692	-5,862	-8,713	-14,654
Tasmania	-10,267	-10,455	-10,512	-10,413	-9,084	-8,205	-8,597	-67,531
Victoria	5,695	-5,334	-6,660	-6,000	-8,659	-723	12,832	-8,849

Interconnector energy flow throughout the week

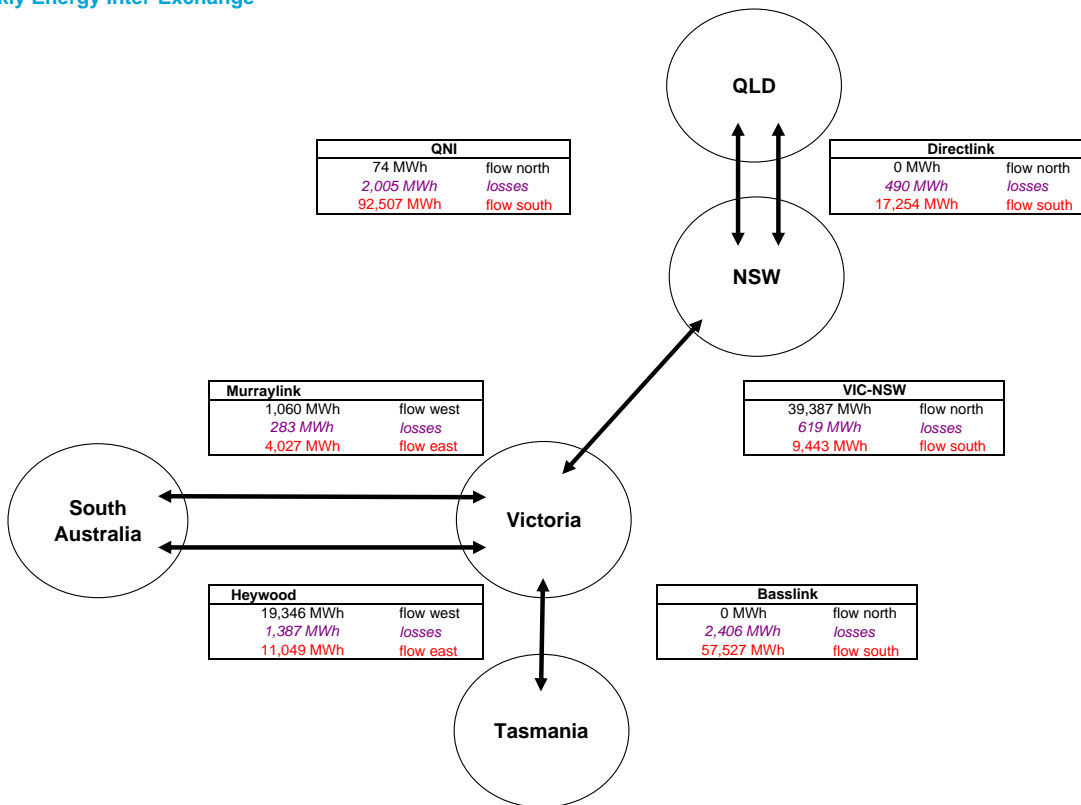


Generation by Fuel Type

	All data in this table is shown in MWh for the week											
	NSW		Queensland		SA		Tasmania		Victoria		Whole of NEM	
	Generation	Flow	Generation	Flow	Generation	Flow	Generation	Flow	Generation	Flow	Generation	Flow
Coal	1,243,462		1,014,091		98,705		0		980,788		3,337,045	
Gas & Other	31,326		116,907		153,517		12,235		55,765		369,750	
Hydro	10,312		18,572		0		97,553		25,595		152,031	
Pump Storage	0		-203		0		0		0		-203	
Total Generation	1,285,100		1,149,366		252,222		109,788		1,062,148		3,858,622	
Total Exports		9,517		109,761		15,076		0		117,319		
Total Imports		149,148		74		20,406		57,527		24,518		
Net Export (Import)		-139,631		109,687		-5,330		-57,527		92,801		
Net Consumption	1,424,731		1,039,680		257,552		167,314		969,347			

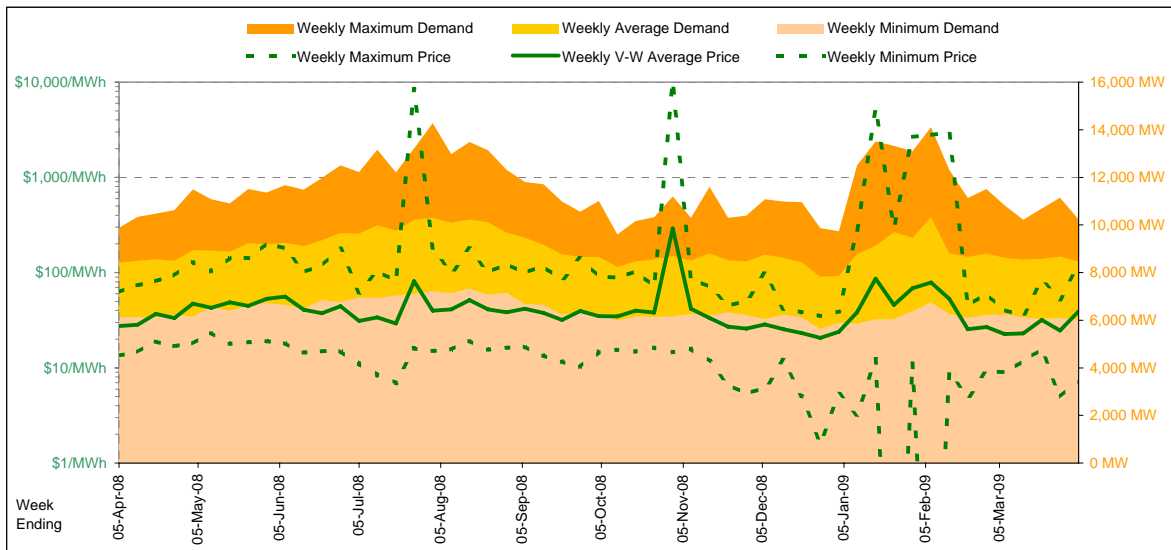


Weekly Energy Inter-Exchange



Current Year

		Week 14 Ending Saturday			52-weeks ending Sat	
		4-Apr-09	% change	5-Apr-08	4-Apr-09	Date Occurred
Energy (MWh)	Total	1,422,915	1%	1,414,314	78,828,769	
	Maximum	10,228	4%	9,878	14,274	28-Aug-08
	Average	8,470	1%	8,419	9,023	
Trading Demand (MW)	Maximum	6,017	-2%	6,122	5,632	26-Dec-08
	Average					
	Minimum					
Regional Load Factor (%)		83%		85%	63%	
Trading Price (\$/MWh)	Maximum	118.20	89%	62.56	10000.00	
	Volume-Weighted Ave	39.09	42%	27.47	44.64	
	Time-Weighted Ave	36.69	36%	26.98	40.75	
	Minimum	7.43	-45%	13.46	-170.76	
Temperature °C (Sydney)	Maximum	26.2	-9%	28.7	40.9	
	Minimum	16.1	44%	11.2	5.3	

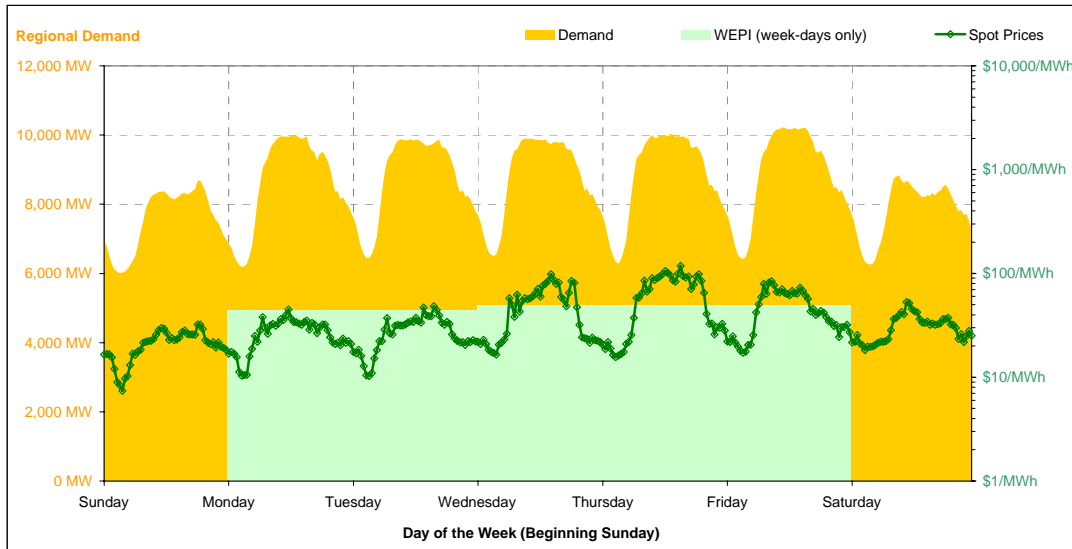


Note that prices below \$1/MWh have been reset to \$1/MWh for the purposes of this display

Current Week

All Data in this table is shown in MWh								
	Weekly Total	Sunday	Monday	Tuesday	Wednesday	Thursday	Friday	Saturday
Total Production by Generation Company								
Babcock & Brown Power	23,649	3,443	3,474	3,476	3,248	3,218	3,403	3,389
Delta Electricity	421,449	59,506	66,699	66,433	65,784	49,659	54,471	58,899
Eraring Energy	259,950	25,846	27,821	39,990	42,159	42,103	42,319	39,714
Macquarie Generation	538,415	67,436	77,414	78,828	78,775	79,219	81,618	75,127
Marubeni	20,084	1,920	3,256	3,248	3,251	3,243	3,247	1,920
Snowy Hydro (NSW)	10,312	0	3,705	1,328	632	2,960	1,689	0
TRUenergy	0	0	0	0	0	0	0	0
Origin Energy	11,242	0	1,614	0	3,618	3,616	2,395	0
Other NSW Plants	0	0	0	0	0	0	0	0
Total internal production	1,285,100	158,150	183,981	193,302	197,465	184,017	189,139	179,047
(Load at Pumped Storage)	0	0	0	0	0	0	0	0
Net internal production	1,285,100	158,150	183,981	193,302	197,465	184,017	189,139	179,047
Percentage each company's production represents of the total internal production								
Babcock & Brown Power	1.8%	2.2%	1.9%	1.8%	1.6%	1.7%	1.8%	1.9%
Delta Electricity	32.8%	37.6%	36.3%	34.4%	33.3%	27.0%	28.8%	32.9%
Eraring Energy	20.2%	16.3%	15.1%	20.7%	21.3%	22.9%	22.4%	22.2%
Macquarie Generation	41.9%	42.6%	42.1%	40.8%	39.9%	43.0%	43.2%	42.0%
Marubeni	1.6%	1.2%	1.8%	1.7%	1.6%	1.8%	1.7%	1.1%
Snowy Hydro (NSW)	0.8%	0.0%	2.0%	0.7%	0.3%	1.6%	0.9%	0.0%
TRUenergy	0.0%	0.0%	0.0%	0.0%	0.0%	0.0%	0.0%	0.0%
Origin Energy	0.9%	0.0%	0.9%	0.0%	1.8%	2.0%	1.3%	0.0%
Other NSW Plants	0.0%	0.0%	0.0%	0.0%	0.0%	0.0%	0.0%	0.0%
Total Percentage	100.0%	100.0%	100.0%	100.0%	100.0%	100.0%	100.0%	100.0%

Current Week (continued)



	Sunday	Monday	Tuesday	Wednesday	Thursday	Friday	Saturday
For the Current Week							
Total Energy (MWh)	181,482	207,559	210,227	210,869	211,878	213,218	187,684
Trading Demand Target (MW)	Maximum	8,692	9,983	9,882	9,903	10,033	8,833
	Average	7,562	8,648	8,759	8,786	8,828	7,820
	Minimum	6,017	6,184	6,449	6,504	6,284	6,258
Regional Load Factor (%)	87%	87%	89%	89%	88%	87%	89%
Wholesale Electricity Price Index (WEPI)	N/A	44.01	43.72	48.78	48.76	48.91	N/A
	Maximum	32.18	44.88	48.26	97.90	118.20	52.84
	Volume-Weighted Ave	21.73	27.80	28.81	48.99	63.44	31.12
	Time-Weighted Ave	21.05	26.63	27.67	46.34	59.24	30.39
Trading Price (\$/MWh)	Minimum	7.43	10.33	10.30	16.53	17.30	18.26
	Maximum	24.4	26.2	22.5	24.7	24.7	20.8
	Minimum	16.1	18.6	19.8	18.4	19.6	18.3
Temperature °C (Sydney)							
Percentage Change from Same Week Last Year							
Total Energy (MWh)	-0%	0%	0%	0%	2%	3%	-1%
Trading Demand Target (MW)	Maximum	0%	4%	2%	0%	4%	-1%
	Average	-0%	0%	0%	0%	2%	-1%
	Minimum	-2%	-2%	-2%	0%	-4%	-2%
Wholesale Electricity Price Index (WEPI)	N/A	3%	-9%	2%	3%	4%	N/A
	Maximum	13%	37%	-23%	75%	148%	76%
	Volume-Weighted Ave	-7%	10%	-4%	68%	103%	25%
	Time-Weighted Ave	-9%	6%	-7%	62%	93%	23%
Trading Price (\$/MWh)	Minimum	-45%	-38%	-48%	-15%	-21%	-8%
	Maximum	-9%	2%	-6%	-14%	11%	-8%
	Minimum	23%	38%	45%	30%	20%	58%
For the Same Week Last Year							
Total Energy (MWh)	181,569	206,556	209,909	210,528	208,428	207,502	189,824
Trading Demand Target (MW)	Maximum	8,674	9,629	9,681	9,878	9,662	8,888
	Average	7,565	8,607	8,746	8,772	8,685	7,909
	Minimum	6,122	6,298	6,570	6,479	6,563	6,411
Regional Load Factor (%)	87%	89%	90%	89%	90%	89%	89%
Wholesale Electricity Price Index (WEPI)	N/A	42.53	47.96	47.60	47.40	47.17	N/A
	Maximum	28.40	32.87	62.56	55.97	47.62	29.95
	Volume-Weighted Ave	23.36	25.28	30.15	29.15	31.19	24.88
	Time-Weighted Ave	23.07	25.01	29.69	28.61	30.63	24.70
Trading Price (\$/MWh)	Minimum	13.46	16.78	20.00	19.43	19.64	19.82
	Maximum	26.8	25.6	23.9	28.7	22.2	22.7
	Minimum	13.1	13.5	13.7	14.1	16.4	11.6
Temperature °C (Sydney)							

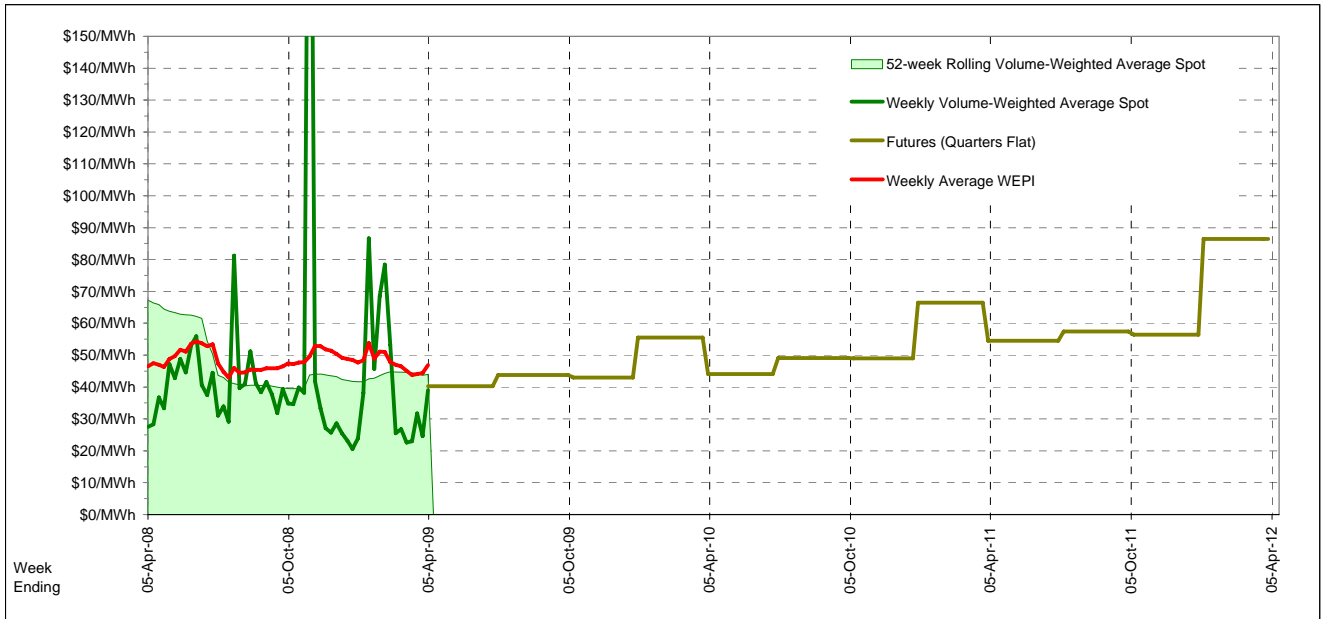
Long-Term Trends

This table contains electricity futures pricing, supplied by d-cyphatrade. All data other than flat and peak quarterly pricing is implied.

Futures settlement prices for flat load (all times)		CaYear	FinYear Ending	Q1	Q2	Q3	Q4
	2009				40.25	43.75	43.00
	2010	49.39	46.53	55.50	44.05	49.10	49.00
	2011	58.69	54.71	66.50	54.50	57.45	56.45
	2012	61.40	63.91	86.45			

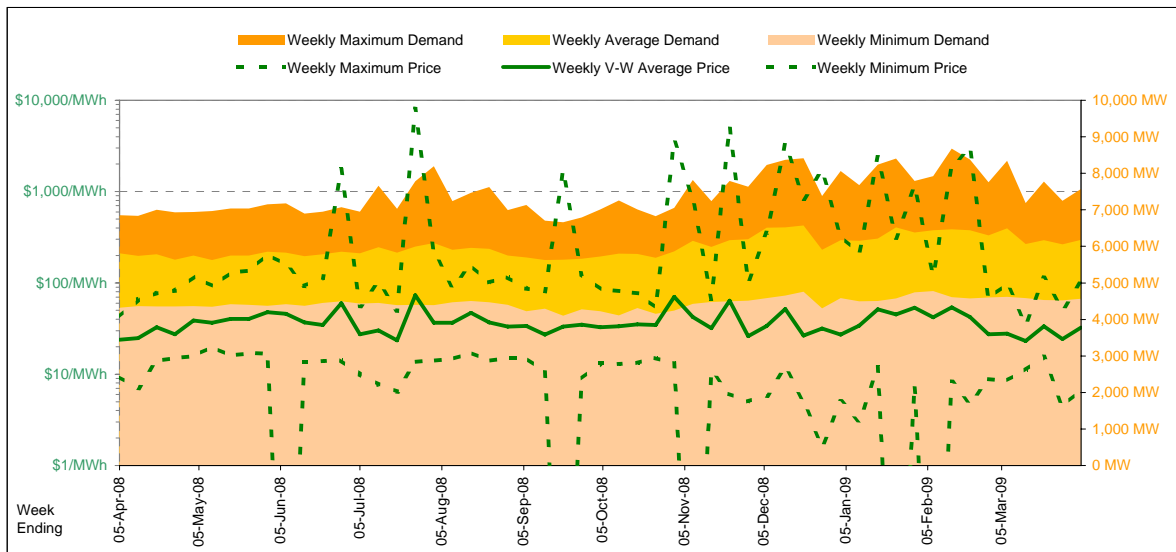
Futures settlement prices for peak load (7am-10pm M-F)		CaYear	FinYear Ending	Q1	Q2	Q3	Q4
	2009				57.00	64.00	64.65
	2010	77.94	70.68	90.50	64.00	78.00	79.00
	2011	55.51	71.53	78.25	50.00	51.00	43.00
	2012	54.63	55.18	78.25			

Implied Prices for Off-Peak Load (All other times)		CaYear	FinYear Ending	Q1	Q2	Q3	Q4
	2009				26.74	27.42	25.54
	2010	26.37	27.05	27.27	27.96	25.79	24.81
	2011	61.25	41.15	57.02	58.13	62.65	67.30
	2012	66.86	70.95	93.06			



Current Year

		Week 14 Ending Saturday		52-Weeks Ending Sat		Date Occurred
		4-Apr-09	% change	5-Apr-08	4-Apr-09	
Energy (MWh)	Total	1,038,639	6%	976,243	52,405,105	
Trading Demand (MW)	Maximum	7,573	11%	6,853	8,677	9-Feb-09
	Average	6,182	6%	5,811	5,999	
	Minimum	4,565	6%	4,324	4,100	20-Sep-08
Regional Load Factor (%)		82%		85%	69%	
Trading Price (\$/MWh)	Maximum	101.08	138%	42.43	8058.07	
	Volume-Weighted Ave	32.38	36%	23.88	38.02	
	Time-Weighted Ave	30.57	31%	23.30	35.74	
	Minimum	6.79	-27%	9.32	-180.89	
Temperature °C (Brisbane)	Maximum	30.5	5%	29.1	36.1	
	Minimum	19.0	56%	12.2	3.7	

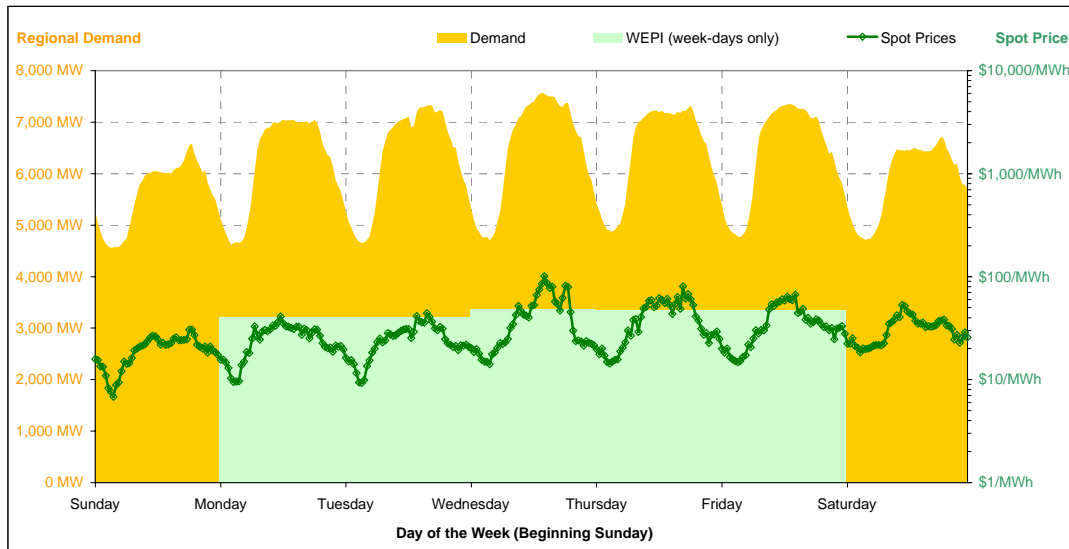


Note that prices below \$1/MWh have been reset to \$1/MWh for the purposes of this display

Current Week

All Data in this table is shown in MWh								
	Weekly Total	Sunday	Monday	Tuesday	Wednesday	Thursday	Friday	Saturday
Total Production by Generation Company								
AGL	25,770	0	3,834	4,440	4,664	4,593	4,617	3,623
Babcock & Brown Power	38,037	3,606	3,637	6,026	7,766	4,500	7,153	5,350
Braemar 2 Partnership	516	0	0	0	0	57	459	0
Callide Power Trading	120,691	16,182	17,136	17,185	17,316	17,499	17,608	17,767
CS Energy	274,198	41,178	42,931	43,390	39,931	44,400	40,915	21,454
Millmerran Energy Trader	143,426	20,811	20,424	20,799	20,484	20,367	20,206	20,337
Origin Energy	5,710	749	633	749	1,470	749	612	749
Stanwell	332,306	40,120	46,182	45,598	49,603	50,906	50,854	49,045
Tarong Energy	162,136	22,382	23,224	23,841	24,187	25,682	21,303	21,518
Tarong North Trader	46,782	5,545	7,287	6,699	6,541	7,501	7,451	5,760
Other QLD Plants	0	0	0	0	0	0	0	0
Total internal production	1,149,569	150,572	165,285	168,726	171,959	176,252	171,176	145,601
(Load at Pumped Storage)	-203	0	0	0	0	-203	0	0
Net internal production	1,149,366	150,572	165,285	168,726	171,959	176,049	171,176	145,601
Percentage each company's production represents of the total internal production								
AGL	2.2%	0.0%	2.3%	2.6%	2.7%	2.6%	2.7%	2.5%
Babcock & Brown Power	3.3%	2.4%	2.2%	3.6%	4.5%	2.6%	4.2%	3.7%
Braemar 2 Partnership	0.0%	0.0%	0.0%	0.0%	0.0%	0.0%	0.3%	0.0%
Callide Power Trading	10.5%	10.7%	10.4%	10.2%	10.1%	9.9%	10.3%	12.2%
CS Energy	23.9%	27.3%	26.0%	25.7%	23.2%	25.2%	23.9%	14.7%
Millmerran Energy Trader	12.5%	13.8%	12.4%	12.3%	11.9%	11.6%	11.8%	14.0%
Origin Energy	0.5%	0.5%	0.4%	0.4%	0.9%	0.4%	0.4%	0.5%
Stanwell	28.9%	26.6%	27.9%	27.0%	28.8%	28.9%	29.7%	33.7%
Tarong Energy	14.1%	14.9%	14.1%	14.1%	14.1%	14.6%	12.4%	14.8%
Tarong North Trader	4.1%	3.7%	4.4%	4.0%	3.8%	4.3%	4.4%	4.0%
Other QLD Plants	0.0%	0.0%	0.0%	0.0%	0.0%	0.0%	0.0%	0.0%
Total Percentage	100.0%	100.0%	100.0%	100.0%	100.0%	100.0%	100.0%	100.0%

Current Week (continued)



	Sunday	Monday	Tuesday	Wednesday	Thursday	Friday	Saturday
For the Current Week							
Total Energy (MWh)	134,761	148,833	151,400	155,094	154,238	153,050	141,264
Trading Demand Target (MW)	Maximum	6,582	7,050	7,328	7,573	7,321	6,713
	Average	5,615	6,201	6,308	6,462	6,427	5,886
	Minimum	4,565	4,621	4,658	4,706	4,873	4,713
Regional Load Factor (%)	85%	88%	86%	85%	88%	87%	88%
Wholesale Electricity Price Index (WEPI)	N/A	40.36	40.36	47.94	47.65	47.52	N/A
	Maximum	30.64	41.15	44.07	101.08	80.17	66.65
	Volume-Weighted Ave	20.17	25.70	25.95	43.27	40.75	37.29
Trading Price (\$/MWh)	Time-Weighted Ave	19.54	24.64	24.81	40.27	38.62	30.71
	Minimum	6.79	9.49	9.29	14.15	14.32	18.45
	Maximum	28.6	27.2	30.0	30.5	24.8	28.1
Temperature °C (Brisbane)	19.0	20.1	19.4	19.0	21.1	20.1	21.9
Percentage Change from Same Week Last Year							
Total Energy (MWh)	6%	5%	5%	8%	6%	7%	8%
Trading Demand Target (MW)	Maximum	4%	4%	7%	11%	7%	9%
	Average	6%	5%	5%	8%	6%	8%
	Minimum	6%	6%	5%	4%	8%	5%
Wholesale Electricity Price Index (WEPI)	N/A	-22%	-20%	-5%	-6%	-6%	N/A
Trading Price (\$/MWh)	Maximum	18%	50%	40%	162%	102%	89%
	Volume-Weighted Ave	4%	25%	6%	73%	43%	38%
	Time-Weighted Ave	2%	23%	5%	64%	39%	36%
Temperature °C (Brisbane)	Minimum	-40%	-7%	-0%	-13%	-12%	-2%
	Maximum	1%	-7%	9%	11%	-12%	8%
	Minimum	56%	55%	30%	17%	48%	39%
For the Same Week Last Year							
Total Energy (MWh)	127,258	141,925	143,573	144,175	145,327	142,782	131,205
Trading Demand Target (MW)	Maximum	6,354	6,760	6,840	6,804	6,853	6,753
	Average	5,302	5,914	5,982	6,007	6,055	5,949
	Minimum	4,324	4,376	4,428	4,526	4,518	4,534
Regional Load Factor (%)	83%	87%	87%	88%	88%	88%	87%
Wholesale Electricity Price Index (WEPI)	N/A	51.49	50.73	50.50	50.65	50.43	N/A
	Maximum	25.98	27.36	31.38	38.58	39.71	42.43
	Volume-Weighted Ave	19.39	20.50	24.54	25.03	28.51	25.70
Trading Price (\$/MWh)	Time-Weighted Ave	19.06	19.98	23.73	24.54	27.74	25.44
	Minimum	11.34	10.15	9.32	16.23	16.34	18.86
	Maximum	28.3	29.1	27.4	27.4	28.1	26.1
Temperature °C (Brisbane)	12.2	13.0	14.9	16.3	14.3	17.1	15.8

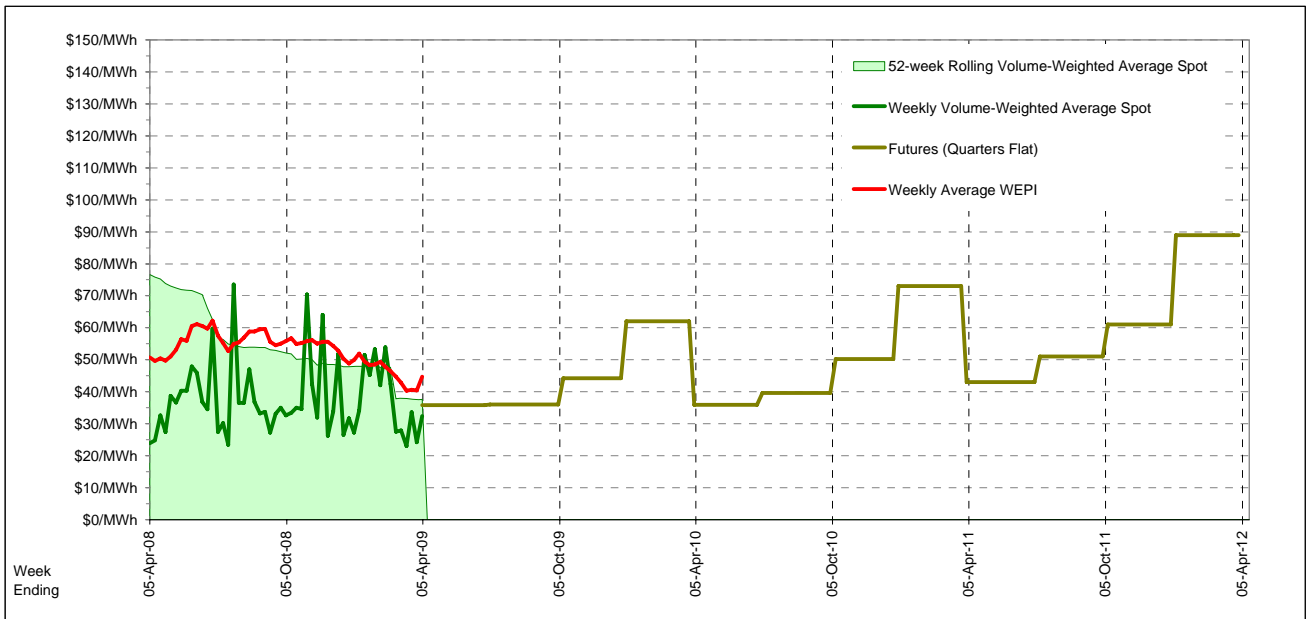
Long-Term Trends

This table contains electricity futures pricing, supplied by d-cyphatrade. All data other than flat and peak quarterly pricing is implied.

<i>Futures settlement prices</i> for flat load (all times)	CalYear	FinYear Ending	Q1	Q2	Q3	Q4
	2009			35.80	36.00	44.25
	2010	46.89	44.47	62.00	35.90	39.60
	2011	56.95	51.37	73.00	43.00	51.00
	2012	62.14	62.71	89.00		61.00

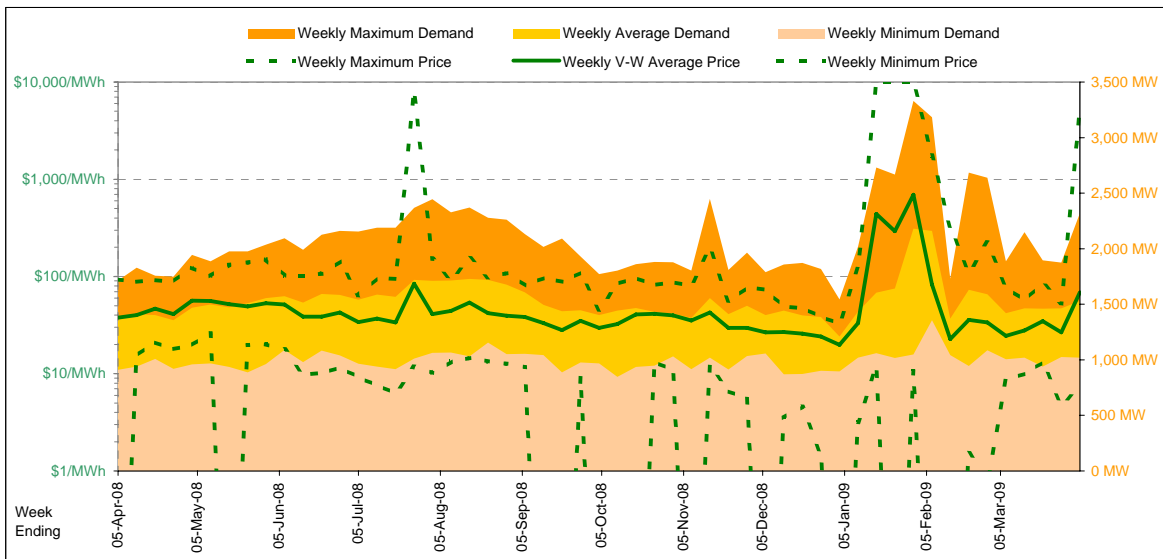
<i>Futures settlement prices</i> for peak load (7am-10pm M-F)	CalYear	FinYear Ending	Q1	Q2	Q3	Q4
	2009			49.75	48.40	68.00
	2010	71.04	67.03	103.00	49.00	56.00
	2011	86.14	82.80	140.00	60.00	60.00
	2012	65.90	82.43	142.00		85.00

<i>Implied Prices</i> for Off-Peak Load (All other times)	CalYear	FinYear Ending	Q1	Q2	Q3	Q4
	2009			24.55	26.00	25.10
	2010	27.41	26.28	28.94	25.34	26.37
	2011	33.41	26.02	18.97	29.29	43.74
	2012	59.11	46.81	46.26		



Current Year

		Week 14 Ending Saturday		52-Weeks Ending Sat		Date Occurred
		4-Apr-09	% change	5-Apr-08	4-Apr-09	
Energy (MWh)	Total	257,061	12%	228,777	13,384,414	
	Maximum	2,319	35%	1,713	3,331	28-Jan-09
	Average	1,530	12%	1,362	1,532	
Trading Demand (MW)	Maximum	1,020	12%	910	847	11-Oct-08
	Minimum	66%		79%	46%	
Regional Load Factor (%)						
Trading Price (\$/MWh)	Maximum	5022.35	5,312%	92.80	9999.92	
	Volume-Weighted Ave	68.51	82%	37.69	71.68	
	Time-Weighted Ave	57.33	58%	36.20	53.80	
	Minimum	7.42	168%	-10.90	-1000.00	
Temperature °C (Adelaide)	Maximum	34.1	27%	26.9	45.7	
	Minimum	11.4	13%	10.1	0.7	

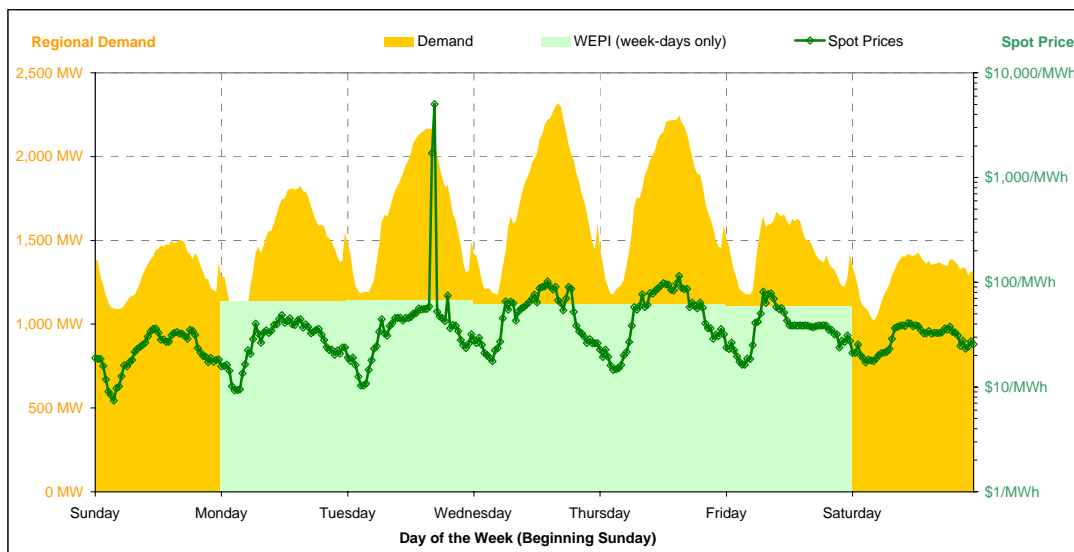


Note that prices below \$1/MWh have been reset to \$1/MWh for the purposes of this display

Current Week

All Data in this table is shown in MWh								
	Weekly Total	Sunday	Monday	Tuesday	Wednesday	Thursday	Friday	Saturday
Total Production by Generation Company								
AGL	49,241	1,665	4,261	6,228	11,469	11,870	9,055	4,695
International Power (Pelican Point)	67,426	8,432	9,566	9,892	10,030	9,977	10,024	9,506
International Power (Synergen)	260	0	0	260	0	0	0	0
Flinders Power	105,498	15,857	16,942	14,022	10,349	15,447	16,880	16,003
Origin Energy	8,240	0	211	1,717	2,424	2,909	720	260
Osborne	13,915	0	0	275	3,778	3,978	2,601	3,284
TRUenergy	1,485	0	0	232	628	624	1	0
Other SA Plants	6,159	552	1,159	926	897	979	1,029	619
Total internal production	252,222	26,505	32,138	33,550	39,573	45,783	40,308	34,365
(Load at Pumped Storage)	0	0	0	0	0	0	0	0
Net internal production	252,222	26,505	32,138	33,550	39,573	45,783	40,308	34,365
Percentage each company's production represents of the total internal production								
AGL	19.5%	6.3%	13.3%	18.6%	29.0%	25.9%	22.5%	13.7%
International Power (Pelican Point)	26.7%	31.8%	29.8%	29.5%	25.3%	21.8%	24.9%	27.7%
International Power (Synergen)	0.1%	0.0%	0.0%	0.8%	0.0%	0.0%	0.0%	0.0%
Flinders Power	41.8%	59.8%	52.7%	41.8%	26.2%	33.7%	41.9%	46.6%
Origin Energy	3.3%	0.0%	0.7%	5.1%	6.1%	6.4%	1.8%	0.8%
Osborne	5.5%	0.0%	0.0%	0.8%	9.5%	8.7%	6.5%	9.6%
TRUenergy	0.6%	0.0%	0.0%	0.7%	1.6%	1.4%	0.0%	0.0%
Other SA Plants	2.4%	2.1%	3.6%	2.8%	2.3%	2.1%	2.6%	1.8%
Total Percentage	100.0%	100.0%	100.0%	100.0%	100.0%	100.0%	100.0%	100.0%

Current Week (continued)



		Sunday	Monday	Tuesday	Wednesday	Thursday	Friday	Saturday
For the Current Week								
Total Energy (MWh)		31,502	35,670	40,289	41,801	42,106	34,505	31,190
Trading Demand Target (MW)	Maximum	1,504	1,825	2,166	2,319	2,247	1,671	1,489
	Average	1,313	1,486	1,679	1,742	1,754	1,438	1,300
	Minimum	1,090	1,020	1,183	1,179	1,179	1,177	1,020
Regional Load Factor (%)		87%	81%		78%	75%	86%	87%
Wholesale Electricity Price Index (WEPI)		N/A	65.58	67.22	61.11	61.16	58.91	N/A
	Maximum	36.15	48.77	5022.35	102.11	114.80	81.18	40.79
	Volume-Weighted Ave	23.80	30.77	212.98	56.21	60.07	39.76	29.89
Trading Price (\$/MWh)	Time-Weighted Ave	23.05	29.10	174.96	51.91	54.55	38.42	29.31
	Minimum	7.42	9.30	10.31	17.69	14.57	16.30	17.12
	Maximum	31.6	32.0	33.1	34.1	33.9	21.7	20.3
Temperature °C (Adelaide)	Minimum	11.4	15.4	20.4	19.3	21.0	16.4	11.8
Percentage Change from Same Week Last Year								
Total Energy (MWh)		14%	2%	16%	35%	24%	-3%	1%
Trading Demand Target (MW)	Maximum	8%	8%	32%	56%	33%	-2%	1%
	Average	14%	2%	16%	35%	24%	-3%	1%
	Minimum	16%	0%	8%	30%	25%	2%	-6%
Wholesale Electricity Price Index (WEPI)		N/A	-22%	-5%	-11%	-15%	-17%	N/A
	Maximum	-1%	-47%	5,604%	129%	24%	-6%	14%
	Volume-Weighted Ave	-10%	-39%	414%	71%	55%	2%	-5%
Trading Price (\$/MWh)	Time-Weighted Ave	-11%	-39%	331%	63%	44%	0%	-6%
	Minimum	-46%	-1%	-57%	262%	-34%	-29%	-21%
	Maximum	59%	43%	23%	83%	92%	6%	-13%
Temperature °C (Adelaide)	Minimum	-4%	11%	96%	22%	108%	40%	4%
For the Same Week Last Year								
Total Energy (MWh)		27,517	35,021	34,873	30,981	33,967	35,517	30,903
Trading Demand Target (MW)	Maximum	1,391	1,696	1,641	1,487	1,688	1,713	1,474
	Average	1,147	1,459	1,453	1,291	1,415	1,480	1,288
	Minimum	937	1,017	1,092	910	944	1,156	1,088
Regional Load Factor (%)		82%	86%	89%	87%	84%	86%	87%
Wholesale Electricity Price Index (WEPI)		N/A	84.21	71.05	68.90	71.70	70.82	N/A
	Maximum	36.40	92.80	88.05	44.57	92.39	86.03	35.77
	Volume-Weighted Ave	26.37	50.17	41.45	32.82	38.78	39.08	31.45
Trading Price (\$/MWh)	Time-Weighted Ave	25.99	47.55	40.58	31.91	37.89	38.31	31.16
	Minimum	13.79	9.41	23.83	-10.90	21.95	23.05	21.61
	Maximum	19.9	22.3	26.9	18.6	17.7	20.5	23.2
Temperature °C (Adelaide)	Minimum	11.9	13.9	10.4	15.8	10.1	11.7	11.3

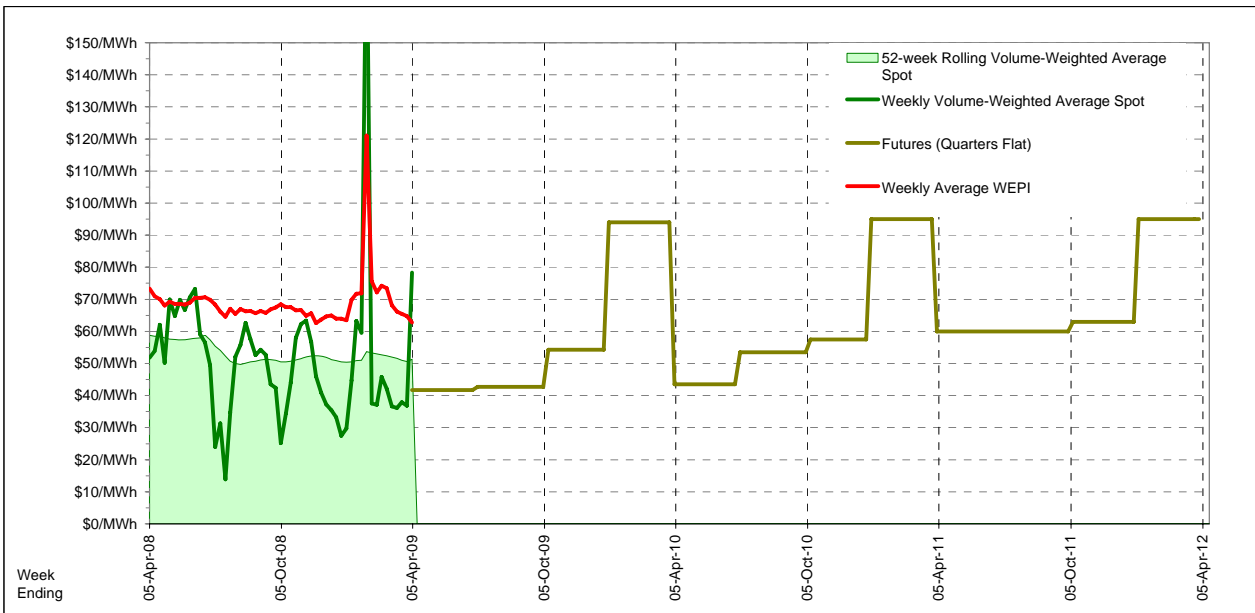
Long-Term Trends

This table contains electricity futures pricing, supplied by d-cyphatrade. All data other than flat and peak quarterly pricing is implied.

<i>Futures settlement prices</i> for flat load (all times)	CalYear	FinYear Ending	Q1	Q2	Q3	Q4
	2009			41.75	42.75	54.25
	2010	61.99	58.49	94.00	43.55	53.45
	2011	69.39	66.34	95.00	60.00	63.00
	2012	69.46	69.46	95.00		

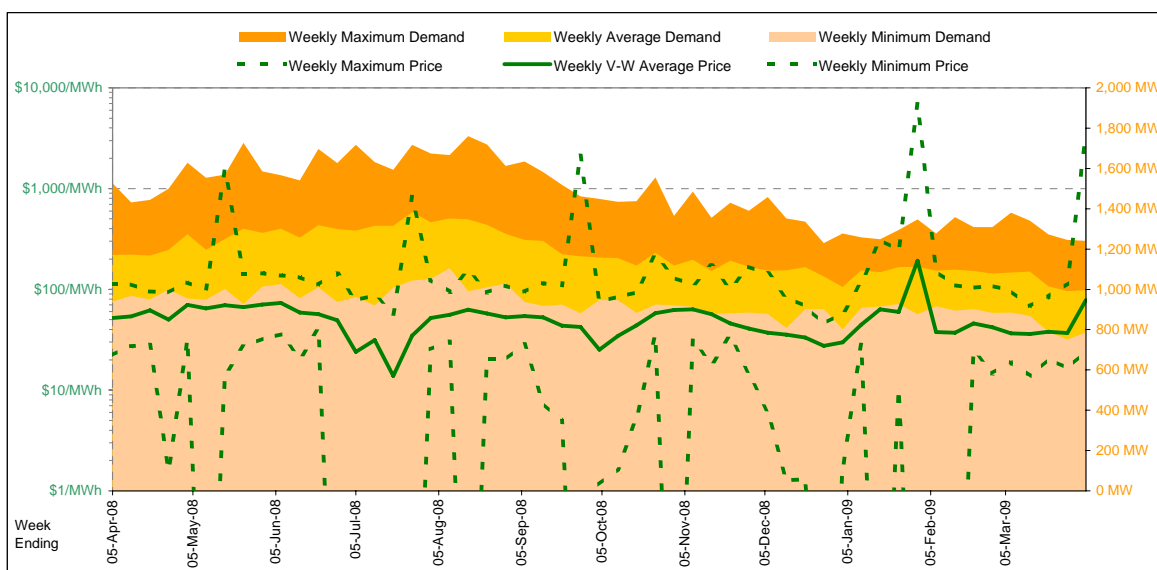
<i>Futures settlement prices</i> for peak load (7am-10pm M-F)	CalYear	FinYear Ending	Q1	Q2	Q3	Q4
	2009			62.00	50.70	86.50
	2010	78.02	75.30	102.00	63.00	73.00
	2011	55.88	70.94	100.00	36.50	42.75
	2012	56.06	56.05	100.00		

<i>Implied Prices</i> for Off-Peak Load (All other times)	CalYear	FinYear Ending	Q1	Q2	Q3	Q4
	2009			25.42	36.34	28.24
	2010	49.06	44.93	87.55	27.86	37.68
	2011	80.29	62.63	90.97	78.95	73.91
	2012	80.27	80.27	90.97		



Current Year

		Week 14 Ending Saturday			52-Weeks Ending Sat	
		4-Apr-09	% change	5-Apr-08	4-Apr-09	Date Occurred
Energy (MWh)	Total	167,326	-15%	196,804	10,300,812	
	Maximum	1,241	-19%	1,526	1,760	11-Aug-08
	Average	996	-15%	1,171	1,179	
Trading Demand (MW)	Minimum	786	-16%	941	751	22-Mar-09
	Regional Load Factor (%)	80%		77%	67%	
Trading Price (\$/MWh)	Maximum	3346.65	2,874%	112.54	6880.22	
	Volume-Weighted Ave	78.30	51%	51.82	51.40	
	Time-Weighted Ave	76.47	52%	50.46	50.03	
	Minimum	24.31	10%	22.17	-999.76	
Temperature °C (Hobart)	Maximum	24.7	12%	22.1	33.5	
	Minimum	10.3	36%	7.6	0.3	

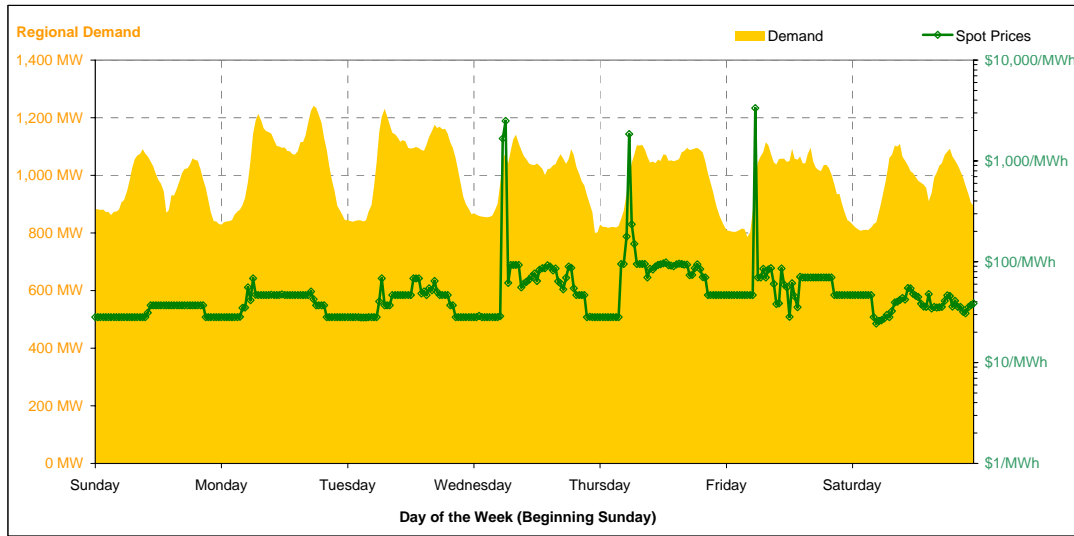


Note that prices below \$1/MWh have been reset to \$1/MWh for the purposes of this display

Current Week

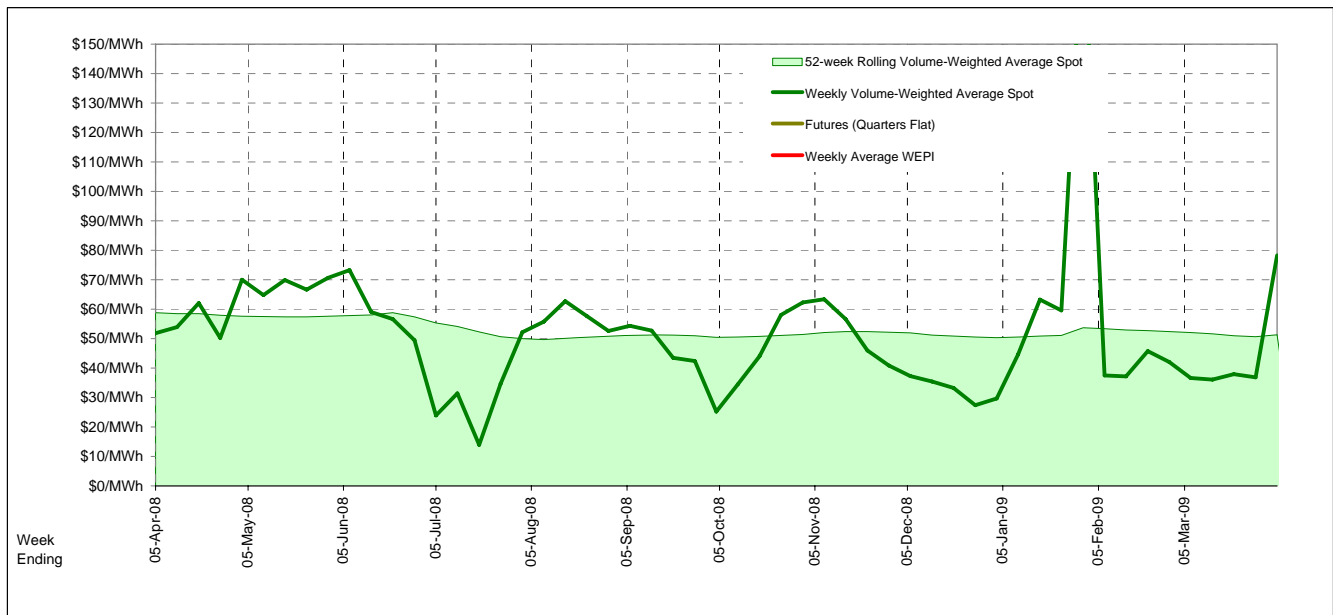
All Data in this table is shown in MWh							
Weekly Total	Sunday	Monday	Tuesday	Wednesday	Thursday	Friday	Saturday
Total Production by Generation Company							
Aurora Energy	379	0	0	0	13	60	279
Hydro Tasmania	97,553	10,497	12,475	12,669	15,167	16,499	14,430
Bell Bay Power	11,857	2,832	3,037	2,832	1,358	683	382
Other TAS Plants	0	0	0	0	0	0	0
Total internal production	109,788	13,329	15,512	15,501	16,538	17,242	15,091
(Load at Pumped Storage)	0	0	0	0	0	0	0
Net internal production	109,788	13,329	15,512	15,501	16,538	17,242	15,091
Percentage each company's production represents of the total internal production							
Aurora Energy	0.3%	0.0%	0.0%	0.0%	0.1%	0.3%	1.8%
Hydro Tasmania	88.9%	78.8%	80.4%	81.7%	91.7%	95.7%	95.6%
Bell Bay Power	10.8%	21.2%	19.6%	18.3%	8.2%	4.0%	2.5%
Other TAS Plants	0.0%	0.0%	0.0%	0.0%	0.0%	0.0%	0.0%
Total Percentage	100.0%	100.0%	100.0%	100.0%	100.0%	100.0%	100.0%

Current Week (continued)



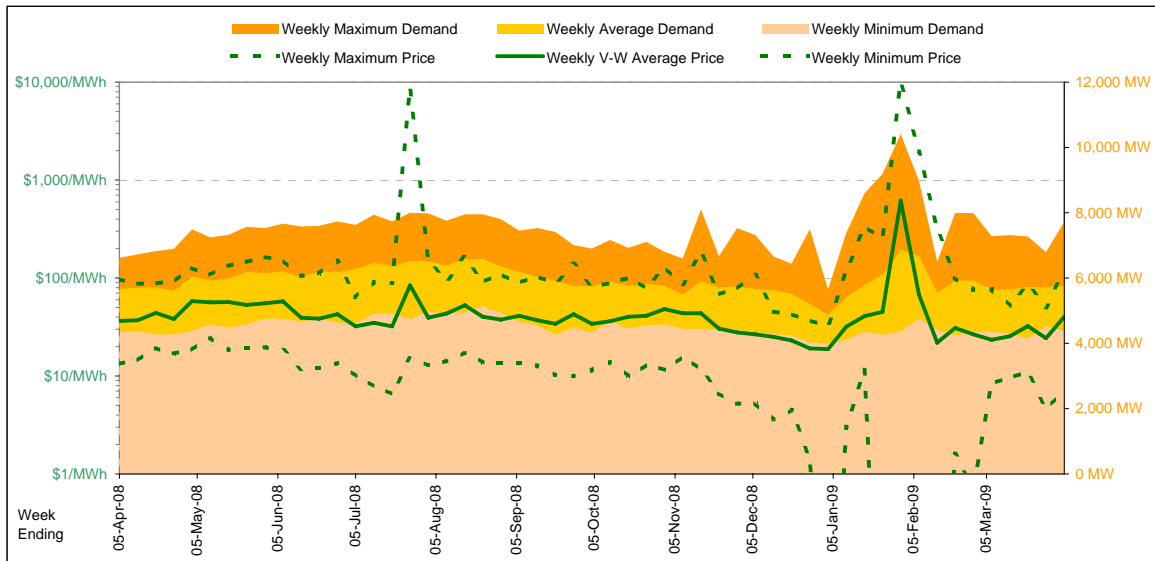
	Sunday	Monday	Tuesday	Wednesday	Thursday	Friday	Saturday
For the Current Week							
Total Energy (MWh)	23,007	25,111	25,052	23,768	23,832	23,397	23,161
Trading Demand Target (MW)	Maximum	1,091	1,241	1,231	1,141	1,106	1,114
	Average	959	1,046	1,044	990	993	975
	Minimum	831	829	839	800	818	786
Regional Load Factor (%)	Maximum	37.09	68.31	68.30	2489.28	1847.53	3346.65
	Average	32.29	40.72	42.01	149.80	117.96	128.48
Trading Price (\$/MWh)	Volume-Weighted Ave	32.16	39.86	40.92	141.21	115.48	126.48
	Time-Weighted Ave	28.16	28.18	28.12	28.24	28.28	28.49
Temperature °C (Hobart)	Maximum	20.0	15.4	17.0	24.2	24.7	21.4
	Minimum	14.5	11.3	11.5	12.6	14.2	15.7
Percentage Change from Same Week Last Year							
Total Energy (MWh)	-15%	-15%	-16%	-14%	-17%	-15%	-12%
Trading Demand Target (MW)	Maximum	-17%	-13%	-19%	-13%	-22%	-11%
	Average	-15%	-15%	-16%	-14%	-17%	-12%
	Minimum	-14%	-15%	-16%	-17%	-13%	-14%
Trading Price (\$/MWh)	Maximum	-35%	-33%	-30%	2,596%	1,559%	3,558%
	Average	-24%	-47%	-34%	158%	158%	237%
Trading Price (\$/MWh)	Volume-Weighted Ave	-23%	-46%	-34%	146%	153%	241%
	Time-Weighted Ave	11%	12%	9%	13%	-3%	13%
Temperature °C (Hobart)	Maximum	16%	14%	-13%	10%	80%	7%
	Minimum	69%	36%	39%	15%	87%	94%
For the Same Week Last Year							
Total Energy (MWh)	27,018	29,689	29,765	27,793	28,833	27,424	26,284
Trading Demand Target (MW)	Maximum	1,309	1,427	1,526	1,310	1,421	1,387
	Average	1,126	1,237	1,240	1,158	1,201	1,143
	Minimum	970	976	998	967	941	964
Regional Load Factor (%)	Maximum	86%	87%	81%	88%	85%	82%
	Average	56.68	101.84	98.11	92.34	111.36	91.48
Trading Price (\$/MWh)	Volume-Weighted Ave	42.42	76.35	63.45	58.07	45.76	38.09
	Time-Weighted Ave	41.94	73.73	62.46	57.40	45.63	37.13
Trading Price (\$/MWh)	Maximum	25.27	25.26	25.74	24.99	29.05	25.18
	Minimum	17.3	13.5	19.6	22.1	13.7	20.0
Temperature °C (Hobart)	Maximum	8.6	8.3	8.3	11.0	7.6	8.1
	Minimum						

Long-Term Trends



Current Year

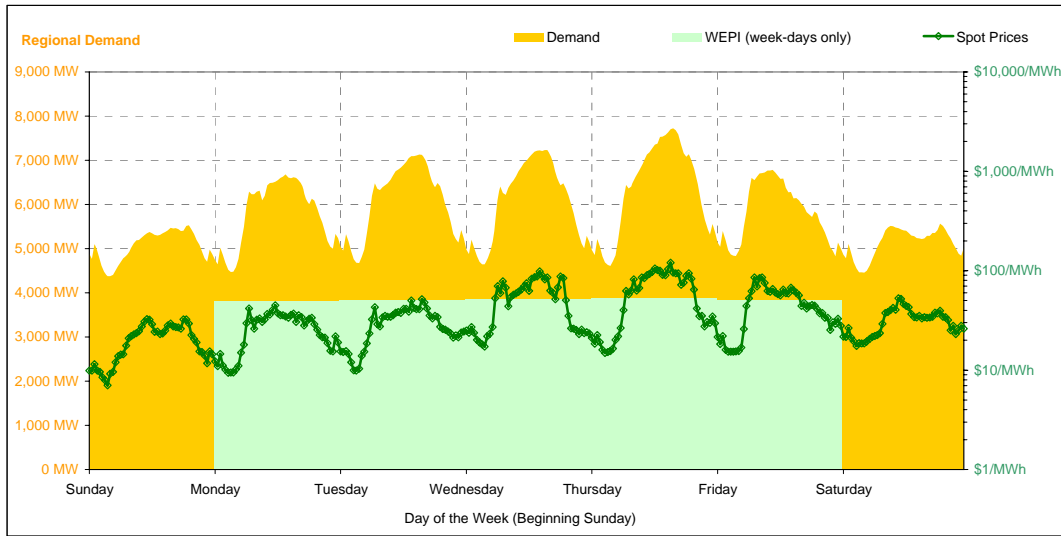
		Week 14 Ending Saturday		52-Weeks Ending Sat		Date Occurred
		4-Apr-09	% change	5-Apr-08	4-Apr-09	
Energy (MWh)	Total	966,968	2%	949,578	51,960,878	
Trading Demand (MW)	Maximum	7,728	17%	6,619	10,415	29-Jan-09
	Average	5,756	2%	5,652	5,948	
	Minimum	4,379	1%	4,344	4,004	28-Dec-08
Regional Load Factor (%)		74%		85%	57%	
Trading Price (\$/MWh)	Maximum	119.99	24%	97.01	10000.00	
	Volume-Weighted Ave	40.19	10%	36.42	52.49	
	Time-Weighted Ave	37.30	6%	35.22	45.09	
	Minimum	7.02	-47%	13.31	-496.71	
Temperature °C (Melbourne)	Maximum	32.8	29%	25.5	46.4	
	Minimum	11.3	36%	8.3	2.2	



Current Week

All Data in this table is shown in MWh								
	Weekly Total	Sunday	Monday	Tuesday	Wednesday	Thursday	Friday	Saturday
Total Production by Generation Company								
AGL	7,334	144	260	147	2,398	2,571	1,667	148
Anglesea	26,670	3,833	3,837	3,816	3,840	3,694	3,834	3,818
Babcock & Brown Power	1,127	35	35	35	243	309	438	35
Ecogen Energy	49,897	0	4,375	6,177	10,977	13,569	9,940	4,860
Energy Brix	21,934	3,344	3,336	3,284	3,308	3,294	2,616	2,754
International Power (Hazelwood)	230,033	33,085	33,101	32,931	34,297	36,691	29,824	30,106
Loy Yang B	154,696	23,960	24,533	24,780	21,516	25,095	22,214	12,600
Loy Yang Power	333,309	44,753	49,401	48,788	42,721	47,105	48,977	51,565
Snowy Hydro	23,002	299	5,899	7,761	3,817	3,510	1,718	0
TRUenergy	214,147	35,213	35,150	35,155	29,562	26,275	26,461	26,333
Other VIC Plants	0	0	0	0	0	0	0	0
Total internal production	1,062,148	144,664	159,925	162,871	152,675	162,110	147,686	132,218
(Load at Pumped Storage)	0	0	0	0	0	0	0	0
Net internal production	1,062,148	144,664	159,925	162,871	152,675	162,110	147,686	132,218
Percentage each company's production represents of the total internal production								
AGL	0.7%	0.1%	0.2%	0.1%	1.6%	1.6%	1.1%	0.1%
Anglesea	2.5%	2.6%	2.4%	2.3%	2.5%	2.3%	2.6%	2.9%
Babcock & Brown Power	0.1%	0.0%	0.0%	0.0%	0.2%	0.2%	0.3%	0.0%
Ecogen Energy	4.7%	0.0%	2.7%	3.8%	7.2%	8.4%	6.7%	3.7%
Energy Brix	2.1%	2.3%	2.1%	2.0%	2.2%	2.0%	1.8%	2.1%
International Power (Hazelwood)	21.7%	22.9%	20.7%	20.2%	22.5%	22.6%	20.2%	22.8%
Loy Yang B	14.6%	16.6%	15.3%	15.2%	14.1%	15.5%	15.0%	9.5%
Loy Yang Power	31.4%	30.9%	30.9%	30.0%	28.0%	29.1%	33.2%	39.0%
Snowy Hydro	2.2%	0.2%	3.7%	4.8%	2.5%	2.2%	1.2%	0.0%
TRUenergy	20.2%	24.3%	22.0%	21.6%	19.4%	16.2%	17.9%	19.9%
Other VIC Plants	0.0%	0.0%	0.0%	0.0%	0.0%	0.0%	0.0%	0.0%
Total Percentage	100.0%	100.0%	100.0%	100.0%	100.0%	100.0%	100.0%	100.0%

Current Week (continued)



	Sunday	Monday	Tuesday	Wednesday	Thursday	Friday	Saturday
For the Current Week							
Total Energy (MWh)	121,572	138,910	145,769	145,723	152,220	139,775	123,001
Trading Demand Target (MW)	Maximum	5,530	6,684	7,132	7,235	7,728	5,565
	Average	5,066	5,788	6,074	6,072	6,342	5,824
	Minimum	4,379	4,472	4,675	4,642	4,609	4,457
Regional Load Factor (%)	92%	87%	85%	84%	82%	86%	92%
Wholesale Electricity Price Index (WEPI)	N/A	49.18	50.07	51.85	52.89	51.24	N/A
	Maximum	32.58	44.86	51.67	98.43	119.99	85.87
	Minimum	7.02	9.37	9.86	17.27	14.89	15.28
Trading Price (\$/MWh)	Volume-Weighted Ave	20.46	27.16	30.75	53.92	64.49	47.00
	Time-Weighted Ave	19.98	25.91	29.34	50.66	59.41	44.79
	Minimum	7.02	9.37	9.86	17.27	14.89	15.28
Temperature °C (Melbourne)	Maximum	24.7	22.5	30.1	29.8	32.8	24.7
	Minimum	11.3	14.0	14.5	15.4	16.9	21.2
Percentage Change from Same Week Last Year							
Total Energy (MWh)	1%	-0%	3%	7%	7%	-2%	-3%
Trading Demand Target (MW)	Maximum	-2%	3%	9%	11%	17%	3%
	Average	1%	-0%	3%	7%	7%	-2%
	Minimum	1%	-2%	-2%	0%	-2%	-3%
Wholesale Electricity Price Index (WEPI)	N/A	5%	-3%	2%	2%	-0%	N/A
Trading Price (\$/MWh)	Maximum	-19%	-52%	-41%	41%	24%	6%
	Volume-Weighted Ave	-21%	-46%	-24%	50%	70%	33%
	Time-Weighted Ave	-22%	-47%	-26%	44%	60%	30%
Temperature °C (Melbourne)	Maximum	20%	11%	18%	26%	99%	29%
	Minimum	36%	21%	54%	28%	76%	98%
For the Same Week Last Year							
Total Energy (MWh)	120,826	138,950	141,239	136,487	142,558	142,519	127,001
Trading Demand Target (MW)	Maximum	5,643	6,477	6,530	6,505	6,619	6,614
	Average	5,034	5,790	5,885	5,687	5,940	5,938
	Minimum	4,344	4,544	4,774	4,628	4,722	4,829
Regional Load Factor (%)	89%	89%	90%	87%	90%	90%	93%
Wholesale Electricity Price Index (WEPI)	N/A	47.05	51.74	50.60	51.81	51.31	N/A
	Maximum	40.25	92.95	87.04	69.74	97.01	80.91
	Minimum	13.31	17.02	21.51	19.60	21.57	20.89
Trading Price (\$/MWh)	Volume-Weighted Ave	25.98	50.73	40.60	35.97	38.04	35.30
	Time-Weighted Ave	25.70	48.54	39.55	35.10	37.24	34.57
	Minimum	13.31	17.02	21.51	19.60	21.57	20.89
Temperature °C (Melbourne)	Maximum	20.6	20.3	25.5	23.6	16.5	19.2
	Minimum	8.3	11.6	9.4	12.0	9.6	10.7

Long-Term Trends

This table contains electricity futures pricing, supplied by d-cyphatrade. All data other than flat and peak quarterly pricing is implied.

		CalYear	FinYear Ending	Q1	Q2	Q3	Q4
Actual Prices for Flat Load (All Times)	2009				42.00	42.50	41.25
	2010	52.10	49.44	70.60	43.80	47.40	46.90
	2011	61.41	57.20	82.00	53.00	55.50	55.50
	2012	69.00	66.37	96.15			
Actual Prices for Peak Load (7am-10pm M-F)	2009				56.25	57.75	58.00
	2010	74.71	72.10	115.25	59.25	62.00	64.00
	2011	77.57	78.40	139.20	50.20	57.20	65.55
	2012	79.08	79.05	144.20			
Implied Prices for Off-Peak Load (All other times)	2009				30.51	30.20	27.74
	2010	33.87	31.17	34.59	31.34	35.63	33.11
	2011	48.38	40.10	35.87	55.26	54.13	47.40
	2012	60.87	56.14	57.40			

