

## NSW injects \$18 billion into state energy program

The New South Wales Government is delivering a five-point plan to further secure Sydney's power supply, State Energy Minister Ian Macdonald has announced. The Government plans to spend almost \$18 billion and over the next five years one third of the state's electricity infrastructure will be replaced, renewed or upgraded.

"We are delivering the biggest energy program in the state's history, with a series of projects underway right across NSW to put in place the infrastructure needed for major economic growth in the future," Macdonald says.

As part of its five-point plan to secure the state's power supply, the NSW Government will toughen penalties for damaging electricity cables.

Under the plan, laws allowing cost recovery for damage will be strengthened and anyone who damages a cable will be required to prove they carried out checks on cable locations before starting work.

Dial-Before-You-Dig and mandatory notification of damage will also be compulsory. It follows an outage in Sydney's CBD on 30 March caused by a main supply cable failing after being damaged by a backhoe several years ago.

The \$18 billion investment on electricity infrastructure over the next five years includes a five-fold increase in 132 kV and 11 kV underground cable replacements on EnergyAustralia's network – totalling \$1.2 billion and \$960 million respectively.

There will be an \$800 million investment in the CityGrid project, which includes work to complete the City West Cable Tunnel and City North Zone substation, as well as the construction of three other major zone substations and 50 kilometres of high voltage cables.

The Government is also planning a multi-million dollar project to install next generation protection equipment for the four major transmission cables into the northern part of the city. This involves the installation of 10 kilometres of fibre-optic cable from Lane Cove to the CBD.

A requirement for government buildings and infrastructure to regularly test and prove back-up power systems are working and sufficient will be introduced along with a best practice program for private sector CBD landlords.

Macdonald says other plans include building an extra level of back-up supply into the CBD electricity network by 2014 "to make Sydney the first CBD in Australia to achieve that standard, matching major international cities like New York".

Macdonald says the \$18 billion expansion of the electricity network is expected to generate 3,700 jobs.

"For example, EnergyAustralia's proposed \$8.5 billion expansion of the network is expected to generate 2,500 long-term jobs including 1,000 apprentices and engineering graduates over the next five years," Macdonald says.

### This week's volume-weighted electricity price (\$/MWh)

NSW:	\$31.88
Vic:	\$31.52
Qld:	\$29.45
SA:	\$28.98
Tas:	\$54.23























## Calendar of Events

### 1 & 8 May 2009

The Australian Energy Market Commission will hold a **Public Forum** on 1 May 2009 in Melbourne for the **Review of Energy Market Frameworks in light of Climate Change policies**. The Forum will be an opportunity to discuss the findings of the First Interim Report and for the AEMC to update stakeholders on progress towards the Second Interim Report, including the developing thinking on potential options for change. The Melbourne forum will focus on issues relating to the NEM.

A second AEMC Public Forum will be held on 8 May 2009 in Perth to address issues specific to Western Australian energy markets.

Materials to inform debate at each forum will be published on the AEMC website during the week of 20 April 2009.

Enquires regarding the public forum can be made to on 02 8296 7800. Register by emailing [registration@aemc.gov.au](mailto:registration@aemc.gov.au) by 27 April 2009.

### 5 to 25 May 2009

esaa is holding a series of **member briefings** to inform both full and associate members about esaa's work program and promote interactive discussion on policy issues affecting Australia's energy industry. The next round of briefing sessions will be held in PricewaterhouseCoopers offices in Perth, Melbourne, Sydney, Adelaide and Brisbane. Members are required to register on-line at [www.pwc.com/au/esaamemberbriefing](http://www.pwc.com/au/esaamemberbriefing). There is no cost to attend.

**Perth**, 5 May from 9.00 am to 11.30 am  
**Melbourne**, 11 May from 2.30 pm to 5.00 pm  
**Sydney**, 15 May from 9.00 am to 11.30 am  
**Adelaide**, 22 May from 2.00 pm to 4.30 pm  
**Brisbane**, 25 May from 2.00 pm to 4.30 pm.

Any queries about the briefings can be directed to Gabrielle Callahan either by emailing [gabrielle.callahan@esaa.com.au](mailto:gabrielle.callahan@esaa.com.au) or phoning 03 9670 0188.

### 6 & 7 May 2009

EnergyAustralia will be hosting the annual **Electricity Supply Industry Field Days** event at The Dome, Sydney Showground, Sydney Olympic Park, on 6 and 7 May 2009. The event comprises an exhibition, seminar, competitions and demonstrations all aimed at further improving safety training and awareness for those associated with the electricity, utilities and infrastructure industries. The theme for Field Days 2009 is "Watts New – Watts Safe".

Accredited training programs will again offer the chance for industry workers to improve their qualifications by signing up for safety-related training courses during the event. Participation in the two-day event is welcome from any people or businesses with an interest in electrical safety in the workplace and entry is free for all delegates.

To attend or exhibit at Field Days 2009, or to obtain further details, visit [www.fielddayswithenergy.com.au](http://www.fielddayswithenergy.com.au).

22 September 2009

A **Climate Change Adaptation Information Sharing Forum** will be held in Canberra on 22 September 2009. The aim of the forum is to share information on how organisations, communities and regions are adapting to climate change. Participants will learn of experiences and developments underway across many sectors. It will enable delegates to identify relevant information and players which are needed to build better networks and partnerships. The forum will not address the causes of climate change, projections of changes, or ways to mitigate climate change. Forum organisers are currently seeking presentations. Potential presenters are requested to email [admin@securityresearch.org.au](mailto:admin@securityresearch.org.au) the title of their proposed address by 30 June, and a few dot points to explain the topic. No abstract is required.

For more information visit [www.climatechange-infrastructure.org.au](http://www.climatechange-infrastructure.org.au).

## Jobs on Offer

### List industry jobs

esaa Full Members are invited to submit industry-related employment opportunities. This is a complimentary service. Email notices to [newseditor@esaa.com.au](mailto:newseditor@esaa.com.au) by close of business Thursday.

### Energy Policy Adviser

An opportunity exists for an **Energy Policy Adviser** to support the development of esaa's energy policy and advocacy work.

The **Energy Policy Adviser** reports to the Policy Development Manager and is responsible for researching and analysing policy developments and providing advice on a range of energy policy issues. The position requires the preparation of high level briefing papers and submissions. The successful candidate must have the capacity for expert analysis of energy markets. The ability to work with representatives of all levels of business and government is also necessary. Located in the Melbourne CBD, the role requires sound oral and written communication skills. Applicants should be tertiary educated, preferably in economics, law or engineering, or with directly relevant experience. Salary will be negotiated based on experience.

Interested applicants should contact Nicholas Wilson on 03 9670 0188 for a detailed position description. Written applications should address the key aspects of the position description. Applications should be lodged at [recruitment@esaa.com.au](mailto:recruitment@esaa.com.au).

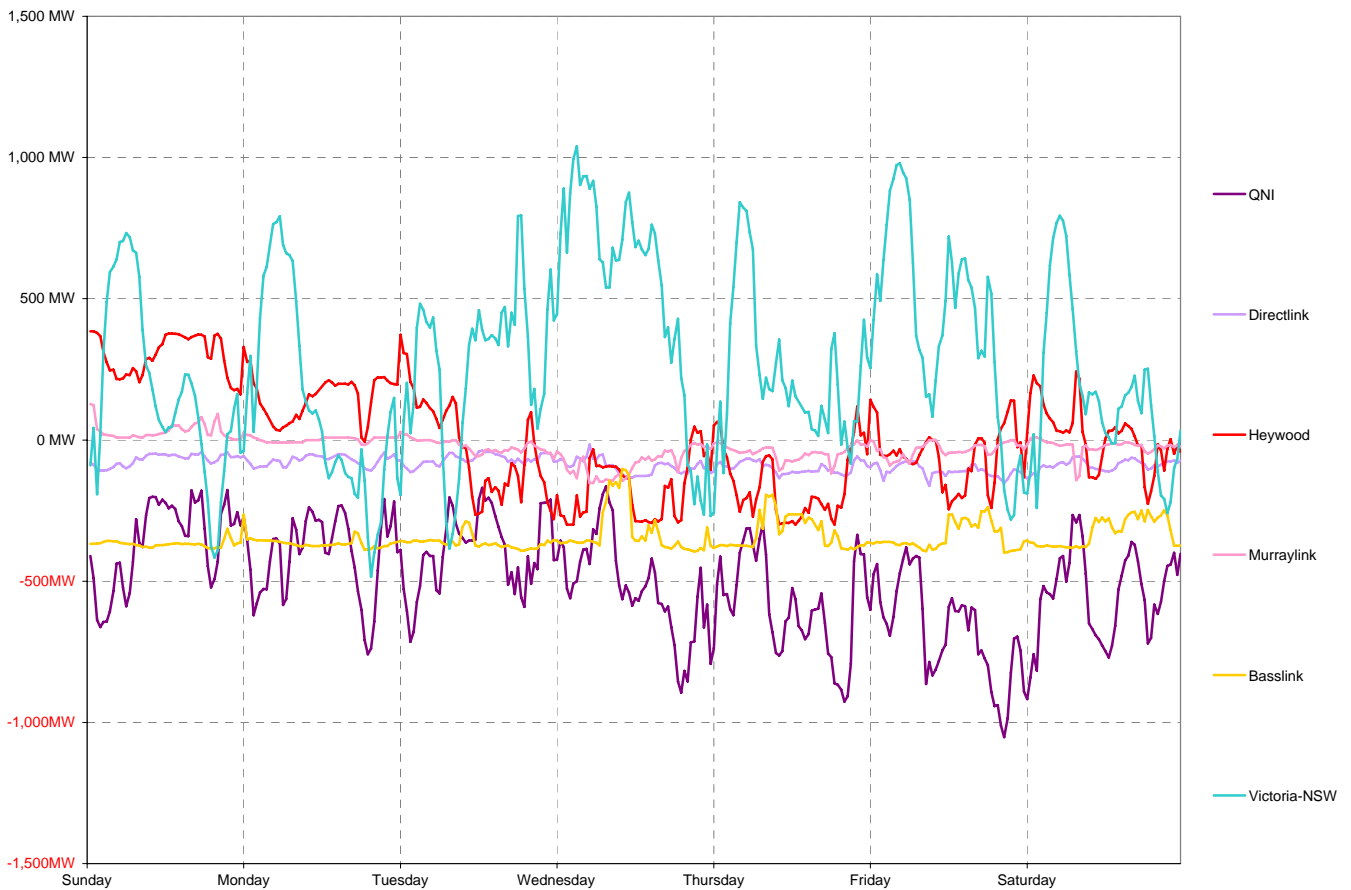
# National Electricity Market Report

Week 16 Ending Saturday 18-Apr-09

## Daily Inter-Regional Energy Flow

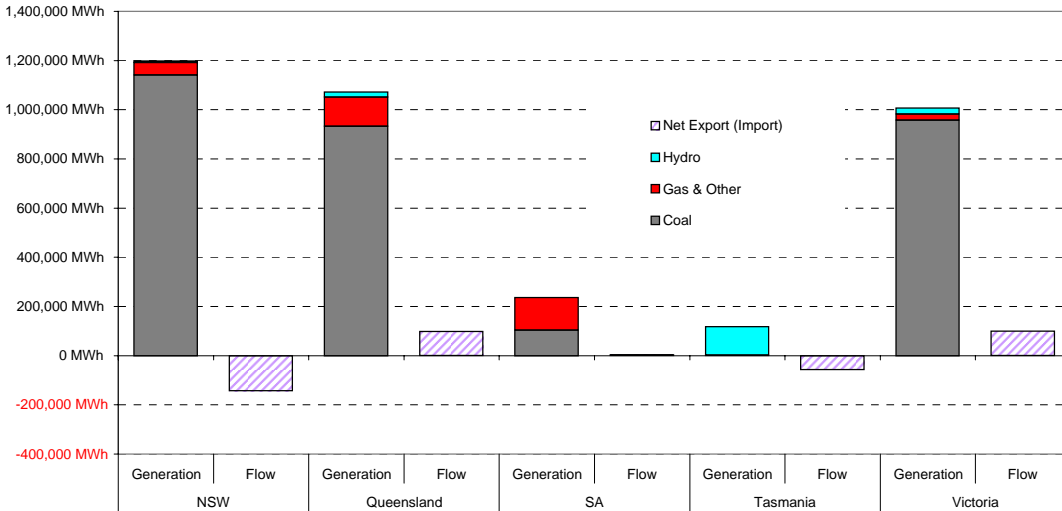
	Daily Net Exports (or Imports)							Weekly Total
	Sunday	Monday	Tuesday	Wednesday	Thursday	Friday	Saturday	
<b>For the Current Week</b>								
NSW	-14,431	-14,573	-17,706	-27,319	-22,097	-28,506	-19,021	-143,651
Queensland	10,277	11,575	11,091	14,924	16,420	19,066	14,946	98,297
South Australia	-8,000	-3,700	1,467	6,009	4,897	2,200	227	3,099
Tasmania	-8,786	-8,797	-8,736	-7,783	-7,889	-8,241	-7,851	-58,082
Victoria	20,940	15,495	13,884	14,169	8,669	15,481	11,700	100,337
<b>MWh Change from Same Week Last Year</b>								
NSW	-8,186	-2,586	-2,271	-16,358	-7,447	-11,716	-1,700	-50,263
Queensland	-4,873	-5,613	-9,707	-3,820	-7,666	-3,926	-10,970	-46,574
South Australia	-3,389	390	4,132	7,916	8,504	7,481	4,736	29,769
Tasmania	1,697	1,588	1,754	2,337	2,278	2,489	2,903	15,045
Victoria	14,240	19,472	20,577	24,302	20,015	19,036	8,086	125,726
<b>For the Same Week Last Year</b>								
NSW	-6,246	-11,987	-15,435	-10,961	-14,650	-16,790	-17,322	-93,389
Queensland	15,150	17,187	20,798	18,744	24,086	22,991	25,916	144,871
South Australia	-4,611	-4,090	-2,666	-1,907	-3,607	-5,281	-4,509	-26,670
Tasmania	-10,483	-10,385	-10,490	-10,119	-10,166	-10,730	-10,754	-73,126
Victoria	6,700	-3,977	-6,693	-10,133	-11,347	-3,555	3,615	-25,390

## Interconnector energy flow throughout the week

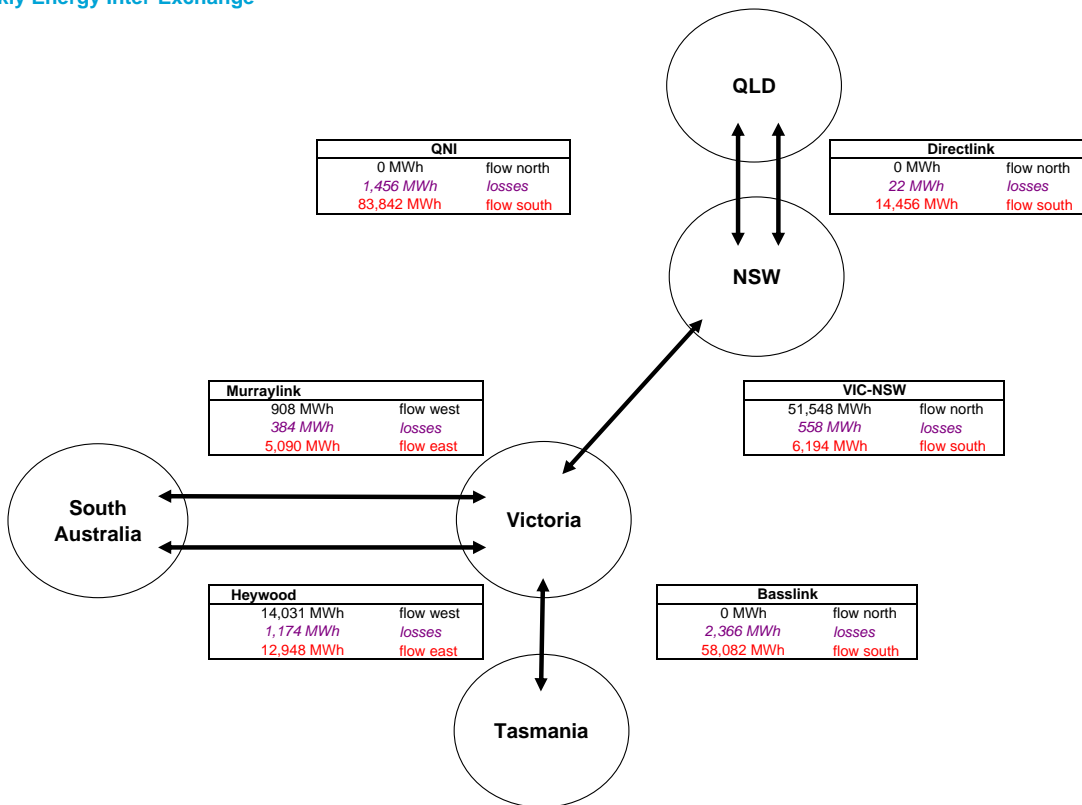


### Generation by Fuel Type

	All data in this table is shown in MWh for the week											
	NSW		Queensland		SA		Tasmania		Victoria		Whole of NEM	
	Generation	Flow	Generation	Flow	Generation	Flow	Generation	Flow	Generation	Flow	Generation	Flow
Coal	1,140,437		933,085		103,790		0		957,288		3,134,598	
Gas & Other	51,173		118,619		132,018		1,753		24,416		327,979	
Hydro	6,054		20,226		0		115,988		25,043		167,310	
Pump Storage	0		-403		0		0		0		-403	
<b>Total Generation</b>	<b>1,197,664</b>		<b>1,071,526</b>		<b>235,808</b>		<b>117,741</b>		<b>1,006,746</b>		<b>3,629,483</b>	
Total Exports		6,194		98,297		18,038		0		124,569		
Total Imports		149,845		0		14,939		58,082		24,232		
<b>Net Export (Import)</b>		<b>-143,651</b>		<b>98,297</b>		<b>3,099</b>		<b>-58,082</b>		<b>100,337</b>		
Net Consumption	1,341,315		973,229		232,709		175,822		906,410			

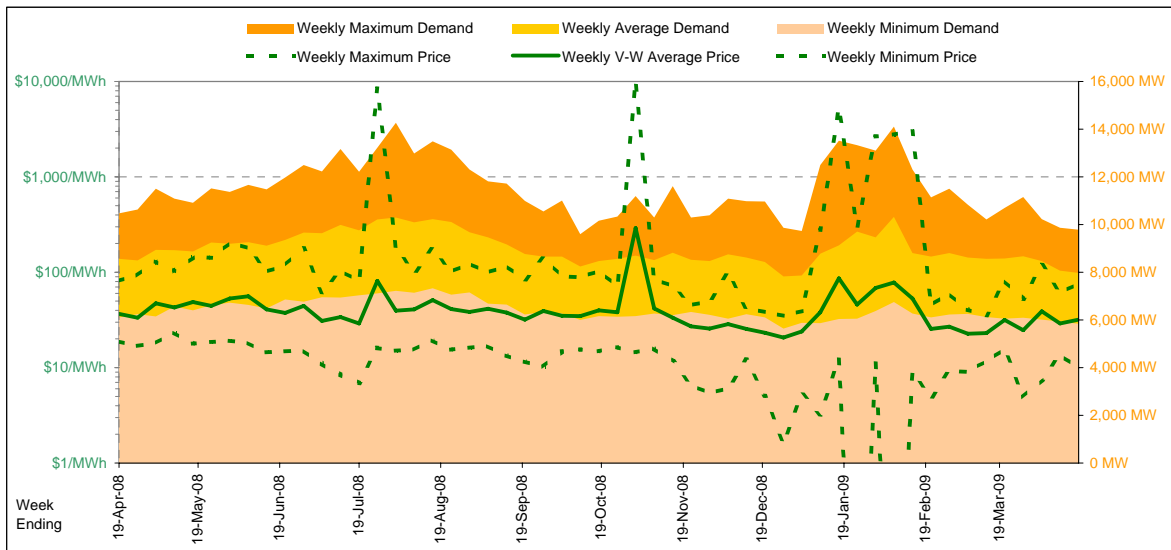


### Weekly Energy Inter-Exchange



Current Year

		Week 16 Ending Saturday			52-weeks ending Sat	
		18-Apr-09	% change	19-Apr-08	18-Apr-09	Date Occurred
Energy (MWh)	Total	1,340,136	-7%	1,439,733	78,656,082	
	Maximum	9,789	-7%	10,475	14,274	28-Aug-08
	Average	7,977	-7%	8,570	9,004	
Trading Demand (MW)	Maximum	5,833	-5%	6,114	5,632	26-Dec-08
	Average					
	Minimum					
Regional Load Factor (%)		81%		82%	63%	
Trading Price (\$/MWh)	Maximum	75.86	-6%	81.08	10000.00	
	Volume-Weighted Ave	31.88	-13%	36.72	44.59	
	Time-Weighted Ave	30.43	-14%	35.46	40.66	
	Minimum	10.01	-47%	18.91	-170.76	
Temperature °C (Sydney)	Maximum	29.3	29%	22.7	40.9	
	Minimum	13.5	2%	13.2	5.3	

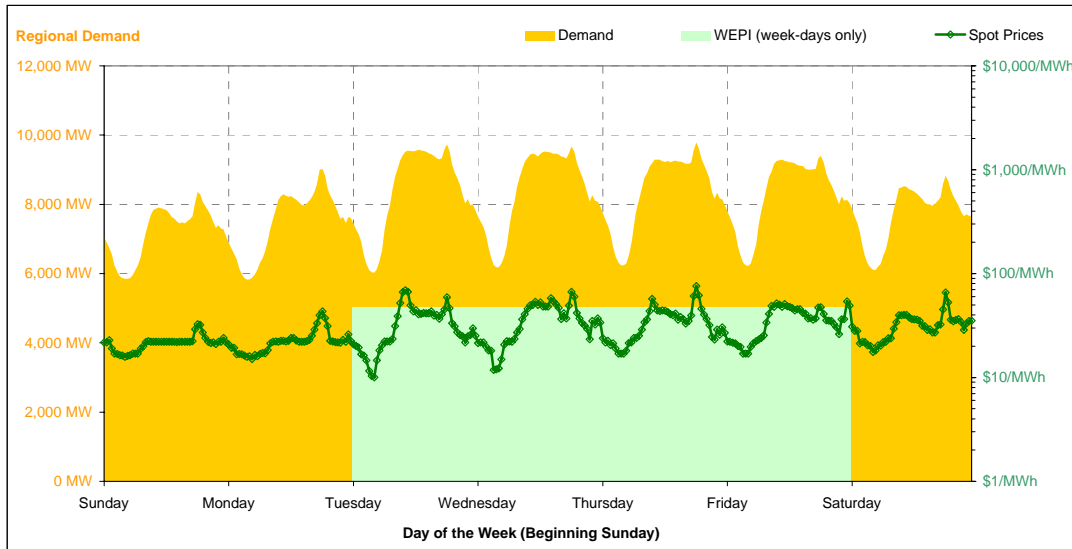


Note that prices below \$1/MWh have been reset to \$1/MWh for the purposes of this display

Current Week

All Data in this table is shown in MWh								
	Weekly Total	Sunday	Monday	Tuesday	Wednesday	Thursday	Friday	Saturday
<b>Total Production by Generation Company</b>								
Babcock & Brown Power	0	0	0	0	0	0	0	0
Delta Electricity	353,608	57,163	57,538	59,921	47,768	49,095	41,036	41,088
Eraring Energy	283,355	38,186	38,538	40,031	41,665	41,591	41,583	41,764
Macquarie Generation	503,474	61,214	67,391	78,668	74,110	73,951	73,919	74,222
Marubeni	18,756	1,920	1,920	3,255	3,246	3,251	3,245	1,920
Snowy Hydro (NSW)	6,054	0	0	1,123	1,457	2,687	789	0
TRUenergy	28,791	30	0	63	6,658	7,518	7,707	6,816
Origin Energy	3,627	0	0	0	0	1,033	2,594	0
Other NSW Plants	0	0	0	0	0	0	0	0
<b>Total internal production</b>	<b>1,197,664</b>	<b>158,513</b>	<b>165,386</b>	<b>183,059</b>	<b>174,903</b>	<b>179,124</b>	<b>170,871</b>	<b>165,809</b>
(Load at Pumped Storage)	0	0	0	0	0	0	0	0
<b>Net internal production</b>	<b>1,197,664</b>	<b>158,513</b>	<b>165,386</b>	<b>183,059</b>	<b>174,903</b>	<b>179,124</b>	<b>170,871</b>	<b>165,809</b>
<b>Percentage each company's production represents of the total internal production</b>								
Babcock & Brown Power	0.0%	0.0%	0.0%	0.0%	0.0%	0.0%	0.0%	0.0%
Delta Electricity	29.5%	36.1%	34.8%	32.7%	27.3%	27.4%	24.0%	24.8%
Eraring Energy	23.7%	24.1%	23.3%	21.9%	23.8%	23.2%	24.3%	25.2%
Macquarie Generation	42.0%	38.6%	40.7%	43.0%	42.4%	41.3%	43.3%	44.8%
Marubeni	1.6%	1.2%	1.2%	1.8%	1.9%	1.8%	1.9%	1.2%
Snowy Hydro (NSW)	0.5%	0.0%	0.0%	0.6%	0.8%	1.5%	0.5%	0.0%
TRUenergy	2.4%	0.0%	0.0%	0.0%	3.8%	4.2%	4.5%	4.1%
Origin Energy	0.3%	0.0%	0.0%	0.0%	0.0%	0.6%	1.5%	0.0%
Other NSW Plants	0.0%	0.0%	0.0%	0.0%	0.0%	0.0%	0.0%	0.0%
<b>Total Percentage</b>	<b>100.0%</b>	<b>100.0%</b>	<b>100.0%</b>	<b>100.0%</b>	<b>100.0%</b>	<b>100.0%</b>	<b>100.0%</b>	<b>100.0%</b>

Current Week (continued)



	Sunday	Monday	Tuesday	Wednesday	Thursday	Friday	Saturday
<b>For the Current Week</b>							
Total Energy (MWh)	172,864	179,831	200,760	201,941	201,083	198,996	184,663
Trading Demand Target (MW)	Maximum	8,362	9,026	9,739	9,674	9,789	8,827
	Average	7,203	7,493	8,365	8,414	8,378	8,291
	Minimum	5,850	5,833	6,026	6,182	6,241	6,100
Regional Load Factor (%)	86%	83%	86%	87%	86%	88%	87%
Wholesale Electricity Price Index (WEPI)	N/A	#N/A	47.53	47.93	47.23	47.12	N/A
	Maximum	32.68	43.17	69.27	66.59	75.86	53.83
	Volume-Weighted Ave	21.75	23.04	34.61	37.10	35.45	36.63
Trading Price (\$/MWh)	Time-Weighted Ave	21.44	22.44	32.75	35.37	34.07	35.43
	Minimum	15.82	15.03	10.01	11.81	17.00	17.58
	Maximum	26.1	22.6	26.9	29.3	24.1	24.1
Temperature °C (Sydney)	18.9	20.4	17.6	16.1	14.9	13.5	14.2
<b>Percentage Change from Same Week Last Year</b>							
Total Energy (MWh)	-7%	-14%	-6%	-4%	-6%	-6%	-6%
Trading Demand Target (MW)	Maximum	-10%	-14%	-7%	-6%	-6%	-8%
	Average	-7%	-14%	-6%	-4%	-6%	-6%
	Minimum	-4%	-8%	-10%	-6%	-6%	-5%
Wholesale Electricity Price Index (WEPI)	N/A	N/A	-0%	2%	1%	2%	N/A
Trading Price (\$/MWh)	Maximum	-59%	-47%	1%	-8%	-2%	-16%
	Volume-Weighted Ave	-26%	-41%	-7%	-9%	-16%	0%
	Time-Weighted Ave	-25%	-40%	-10%	-11%	-17%	-0%
Temperature °C (Sydney)	Minimum	-16%	-22%	-52%	-51%	-29%	-12%
	Maximum	15%	20%	37%	40%	22%	21%
	Minimum	25%	55%	28%	17%	0%	-12%
<b>For the Same Week Last Year</b>							
Total Energy (MWh)	185,814	208,859	212,878	210,821	213,427	212,370	195,566
Trading Demand Target (MW)	Maximum	9,275	10,475	10,427	10,332	10,395	10,227
	Average	7,742	8,702	8,870	8,784	8,893	8,849
	Minimum	6,114	6,362	6,676	6,574	6,660	6,627
Regional Load Factor (%)	83%	83%	85%	85%	86%	87%	85%
Wholesale Electricity Price Index (WEPI)	N/A	47.27	47.69	47.08	46.65	46.32	N/A
	Maximum	78.90	81.08	68.40	72.62	77.24	64.29
	Volume-Weighted Ave	29.34	38.78	37.21	40.69	42.32	36.55
Trading Price (\$/MWh)	Time-Weighted Ave	28.47	37.28	36.19	39.54	41.04	35.55
	Minimum	18.91	19.37	20.79	23.87	24.00	19.36
	Maximum	22.7	18.9	19.7	20.9	19.7	20.0
Temperature °C (Sydney)	15.1	13.2	13.8	13.8	14.9	15.3	15.9

Long-Term Trends

This table contains electricity futures pricing, supplied by d-cyphatrade. All data other than flat and peak quarterly pricing is implied.

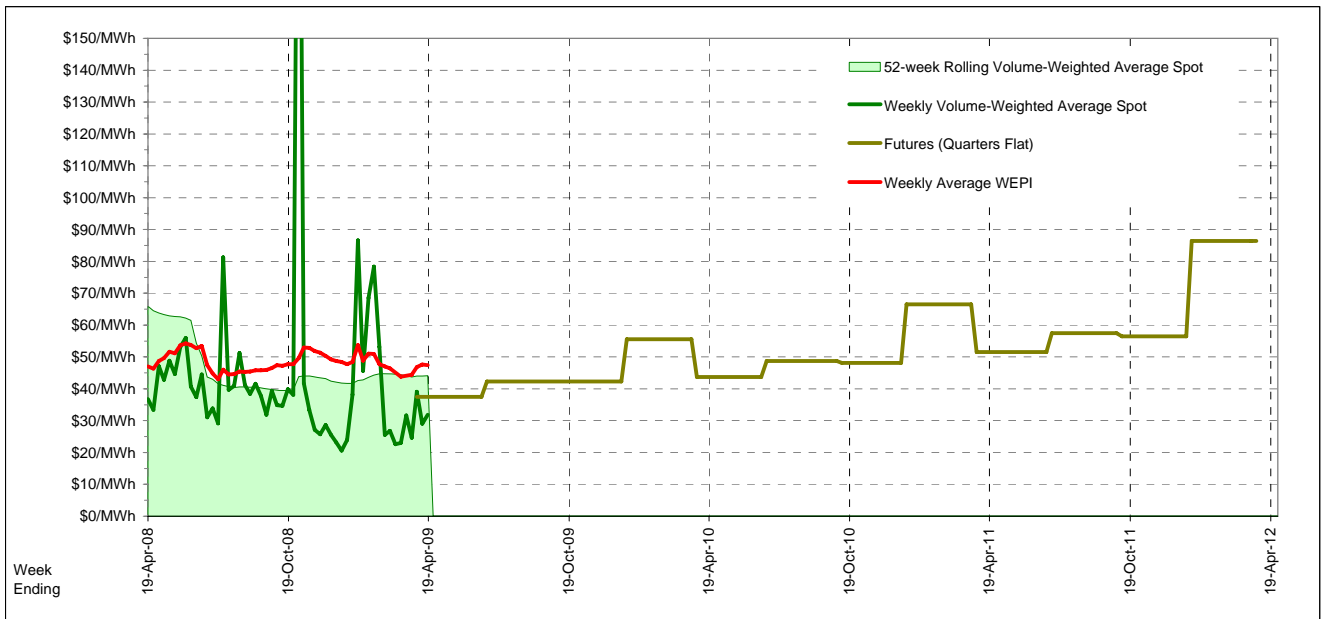
Futures settlement prices for flat load (all times)		CaYear	FinYear Ending	Q1	Q2	Q3	Q4
		2009			37.50	42.30	42.25
		2010	49.03	45.93	55.60	43.75	48.15
		2011	57.95	53.65	66.50	51.50	57.45
		2012	61.40	63.91	86.45		

Futures settlement prices for peak load (7am-10pm M-F)		CaYear	FinYear Ending	Q1	Q2	Q3	Q4
		2009			57.00	60.75	63.50
		2010	77.67	69.28	90.50	62.90	79.00
		2011	55.51	71.53	78.25	50.00	51.00
		2012	54.63	55.18	78.25		

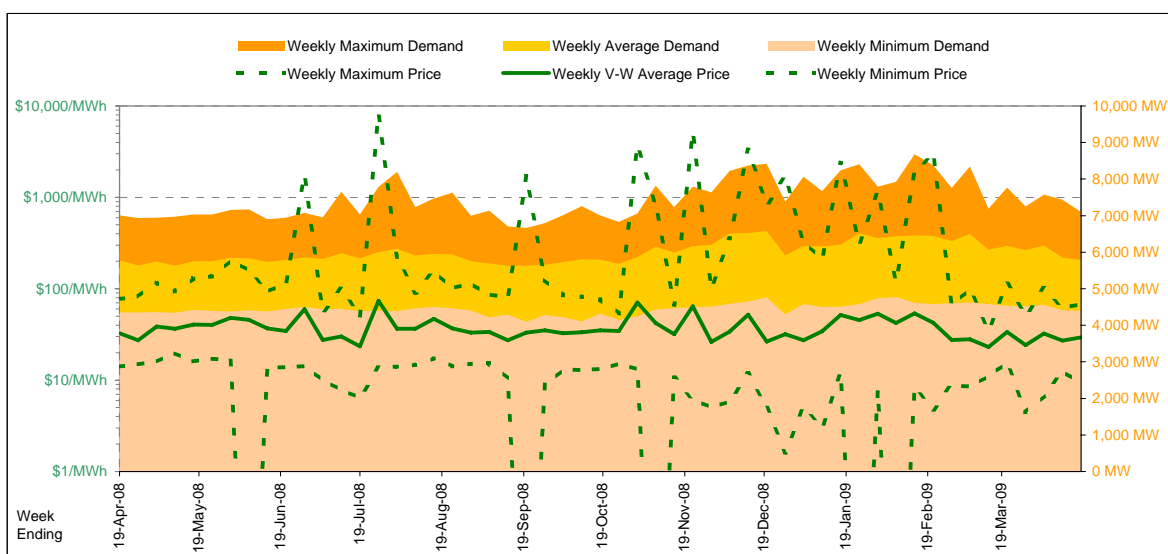
  

Implied Prices for Off-Peak Load (All other times)		CaYear	FinYear Ending	Q1	Q2	Q3	Q4
		2009			21.77	27.42	25.11
		2010	25.93	27.10	27.45	28.31	25.07
		2011	59.92	39.23	57.02	52.71	62.65
		2012	66.86	70.95	93.06		



Current Year

Energy (MWh)	Total	Week 16 Ending Saturday		52-Weeks Ending Sat		Date Occurred
		18-Apr-09	% change	19-Apr-08	18-Apr-09	
		972,584	0%	971,151	52,424,459	
Trading Demand (MW)	Maximum	7,099	1%	7,003	8,677	9-Feb-09
	Average	5,789	0%	5,781	6,001	
	Minimum	4,393	1%	4,355	4,100	20-Sep-08
Regional Load Factor (%)		82%		83%	69%	
Trading Price (\$/MWh)	Maximum	67.56	-13%	77.51	8058.07	
	Volume-Weighted Ave	29.45	-10%	32.61	38.00	
	Time-Weighted Ave	28.15	-10%	31.34	35.72	
	Minimum	9.49	-32%	14.04	-180.89	
Temperature °C (Brisbane)	Maximum	30.7	7%	28.6	36.1	
	Minimum	15.6	3%	15.2	3.7	

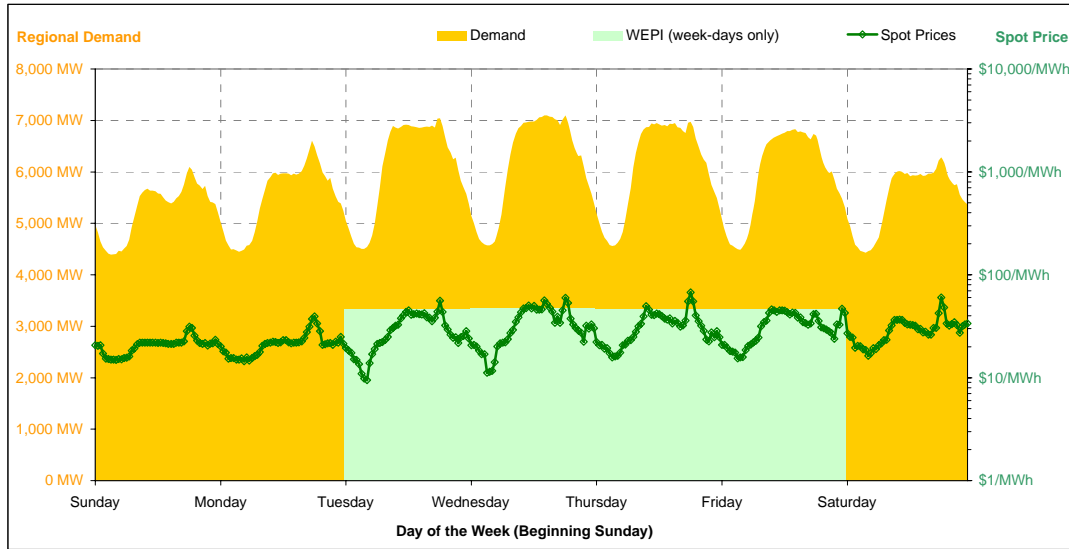


Note that prices below \$1/MWh have been reset to \$1/MWh for the purposes of this display

Current Week

All Data in this table is shown in MWh								
	Weekly Total	Sunday	Monday	Tuesday	Wednesday	Thursday	Friday	Saturday
<b>Total Production by Generation Company</b>								
AGL	24,738	0	3,031	4,586	4,502	4,504	4,617	3,499
Babcock & Brown Power	39,406	3,541	5,543	5,428	6,318	6,119	7,101	5,358
Braemar 2 Partnership	2,555	0	0	0	875	460	459	762
Callide Power Trading	113,658	16,651	17,306	16,950	18,059	18,718	17,553	8,423
CS Energy	220,826	28,777	28,478	30,704	33,213	34,091	33,419	32,145
Millmerran Energy Trader	140,661	19,949	19,798	19,549	20,331	20,246	20,441	20,347
Origin Energy	5,591	761	749	749	1,079	749	749	755
Stanwell	325,406	36,300	38,288	48,745	51,027	50,797	50,522	49,729
Tarong Energy	178,338	23,355	23,654	24,483	27,121	26,884	27,022	25,821
Tarong North Trader	20,752	7,497	7,498	5,758	0	0	0	0
Other QLD Plants	0	0	0	0	0	0	0	0
<b>Total internal production</b>	<b>1,071,929</b>	<b>136,830</b>	<b>144,343</b>	<b>156,951</b>	<b>162,524</b>	<b>162,565</b>	<b>161,880</b>	<b>146,837</b>
(Load at Pumped Storage)	-403	0	-403	0	0	0	0	0
<b>Net internal production</b>	<b>1,071,526</b>	<b>136,830</b>	<b>143,940</b>	<b>156,951</b>	<b>162,524</b>	<b>162,565</b>	<b>161,880</b>	<b>146,837</b>
<b>Percentage each company's production represents of the total internal production</b>								
AGL	2.3%	0.0%	2.1%	2.9%	2.8%	2.8%	2.9%	2.4%
Babcock & Brown Power	3.7%	2.6%	3.8%	3.5%	3.9%	3.8%	4.4%	3.6%
Braemar 2 Partnership	0.2%	0.0%	0.0%	0.0%	0.5%	0.3%	0.3%	0.5%
Callide Power Trading	10.6%	12.2%	12.0%	10.8%	11.1%	11.5%	10.8%	5.7%
CS Energy	20.6%	21.0%	19.7%	19.6%	20.4%	21.0%	20.6%	21.9%
Millmerran Energy Trader	13.1%	14.6%	13.7%	12.5%	12.5%	12.5%	12.6%	13.9%
Origin Energy	0.5%	0.6%	0.5%	0.5%	0.7%	0.5%	0.5%	0.5%
Stanwell	30.4%	26.5%	26.5%	31.1%	31.4%	31.2%	31.2%	33.9%
Tarong Energy	16.6%	17.1%	16.4%	15.6%	16.7%	16.5%	16.7%	17.6%
Tarong North Trader	1.9%	5.5%	5.2%	3.7%	0.0%	0.0%	0.0%	0.0%
Other QLD Plants	0.0%	0.0%	0.0%	0.0%	0.0%	0.0%	0.0%	0.0%
<b>Total Percentage</b>	<b>100.0%</b>	<b>100.0%</b>	<b>100.0%</b>	<b>100.0%</b>	<b>100.0%</b>	<b>100.0%</b>	<b>100.0%</b>	<b>100.0%</b>

Current Week (continued)



	Sunday	Monday	Tuesday	Wednesday	Thursday	Friday	Saturday
<b>For the Current Week</b>							
Total Energy (MWh)	126,519	132,329	145,851	147,507	146,022	142,586	131,772
Trading Demand Target (MW)	Maximum	6,097	6,609	7,043	7,099	6,975	6,283
	Average	5,272	5,514	6,077	6,146	6,084	5,941
	Minimum	4,393	4,448	4,504	4,574	4,561	4,488
Regional Load Factor (%)	86%	83%	86%	87%	87%	87%	87%
Wholesale Electricity Price Index (WEPI)	N/A	#N/A	46.67	47.07	46.63	46.32	N/A
	Maximum	31.27	39.42	56.07	59.50	67.56	60.01
	Volume-Weighted Ave	21.03	21.99	30.42	35.00	32.83	33.09
	Time-Weighted Ave	20.72	21.45	28.91	33.22	31.47	31.90
Trading Price (\$/MWh)	Minimum	14.88	14.44	9.49	11.17	15.80	16.39
	Maximum	26.5	25.5	27.5	30.7	29.5	27.9
	Minimum	19.3	19.7	21.2	20.3	19.8	16.5
Temperature °C (Brisbane)							
<b>Percentage Change from Same Week Last Year</b>							
Total Energy (MWh)	-2%	-9%	2%	5%	3%	1%	0%
Trading Demand Target (MW)	Maximum	-6%	-6%	3%	6%	2%	-2%
	Average	-2%	-9%	2%	5%	3%	1%
	Minimum	1%	-0%	-1%	3%	3%	-0%
Wholesale Electricity Price Index (WEPI)	N/A	N/A	-8%	-7%	-7%	-8%	N/A
	Maximum	-60%	-49%	-10%	-13%	-0%	-8%
	Volume-Weighted Ave	-23%	-39%	-9%	-6%	-10%	4%
	Time-Weighted Ave	-22%	-38%	-11%	-7%	-10%	4%
Trading Price (\$/MWh)	Minimum	-10%	-15%	-49%	-43%	-20%	17%
	Maximum	-7%	-10%	6%	18%	10%	18%
	Minimum	15%	16%	25%	22%	30%	-7%
Temperature °C (Brisbane)							
<b>For the Same Week Last Year</b>							
Total Energy (MWh)	129,464	145,130	142,891	140,240	141,089	140,871	131,468
Trading Demand Target (MW)	Maximum	6,480	7,003	6,862	6,706	6,841	6,627
	Average	5,394	6,047	5,954	5,843	5,879	5,870
	Minimum	4,355	4,459	4,554	4,443	4,440	4,489
Regional Load Factor (%)	83%	86%	87%	87%	86%	89%	85%
Wholesale Electricity Price Index (WEPI)	N/A	50.58	50.60	50.36	50.31	50.27	N/A
	Maximum	77.51	77.45	62.03	68.64	67.66	55.78
	Volume-Weighted Ave	27.43	36.04	33.34	37.08	36.31	31.73
	Time-Weighted Ave	26.50	34.40	32.31	35.82	35.00	30.70
Trading Price (\$/MWh)	Minimum	16.54	16.98	18.45	19.55	19.82	16.28
	Maximum	28.6	28.2	25.9	26.0	26.7	25.1
	Minimum	16.8	17.0	16.9	16.6	15.2	16.8
Temperature °C (Brisbane)							

Long-Term Trends

This table contains electricity futures pricing, supplied by d-cyphatrade. All data other than flat and peak quarterly pricing is implied.

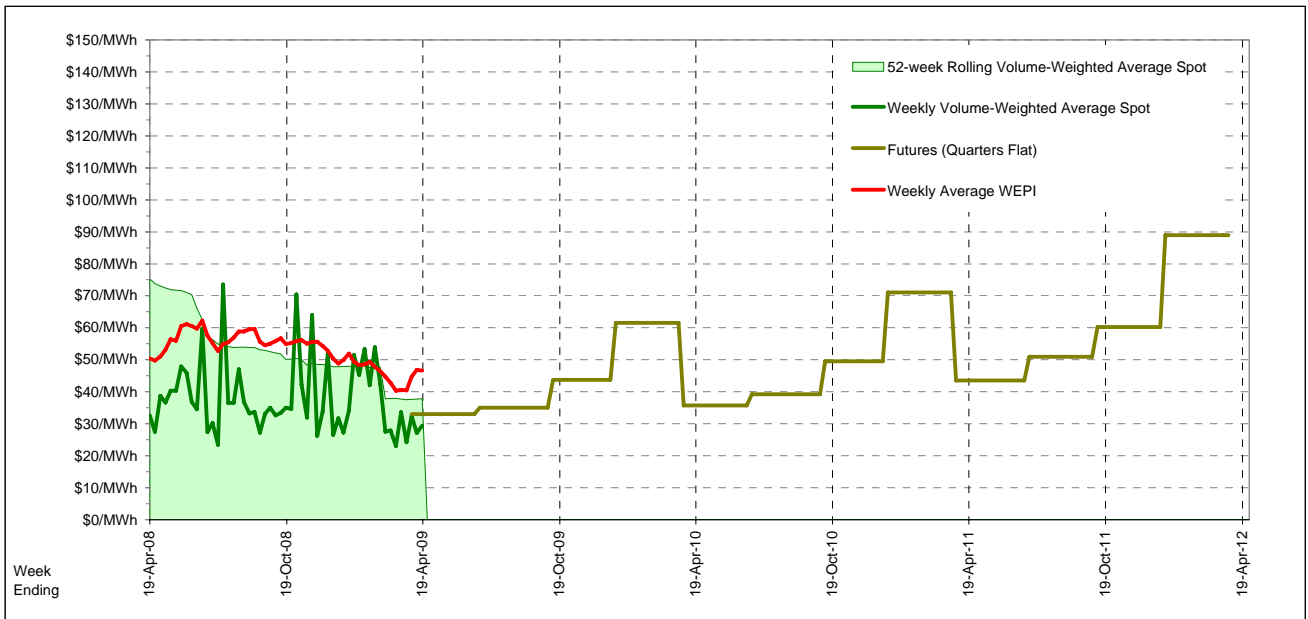
Futures settlement prices for flat load (all times)		CalYear	FinYear Ending	Q1	Q2	Q3	Q4
		2009			33.05	35.00	43.75
		2010	46.45	43.93	61.50	35.75	39.25
		2011	56.38	50.72	71.00	43.50	50.95
		2012	62.14	62.51	89.00		60.25

Futures settlement prices for peak load (7am-10pm M-F)		CalYear	FinYear Ending	Q1	Q2	Q3	Q4
		2009			45.00	48.40	66.50
		2010	70.79	66.40	102.00	49.00	56.00
		2011	85.64	82.31	138.00	60.00	60.00
		2012	65.90	82.43	142.00		85.00

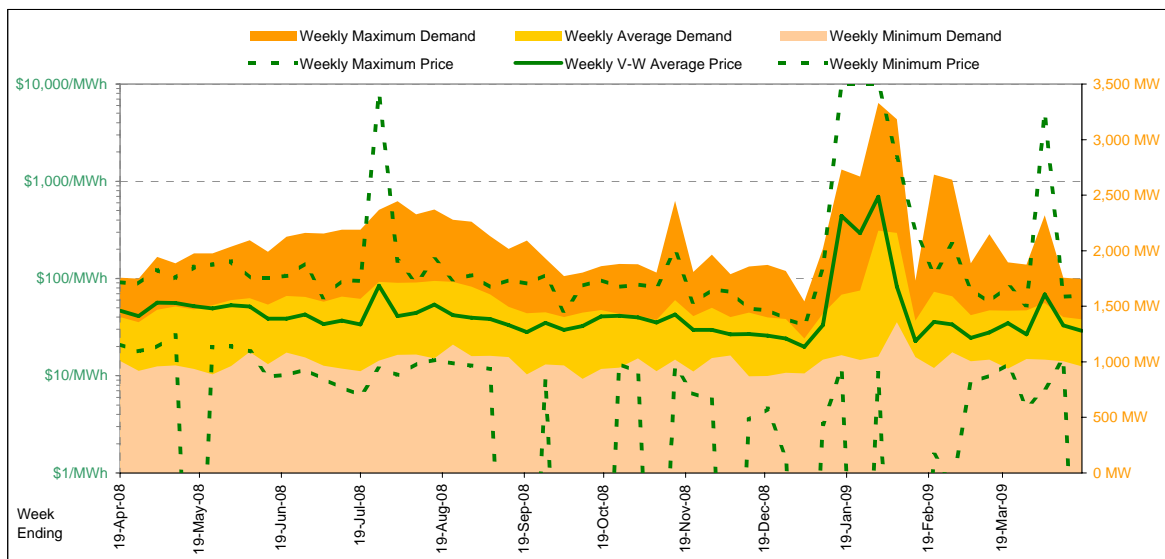
  

Implied Prices for Off-Peak Load (All other times)		CalYear	FinYear Ending	Q1	Q2	Q3	Q4
		2009			23.41	24.19	25.40
		2010	26.82	25.81	28.84	25.06	25.74
		2011	32.78	25.24	16.97	30.19	43.65
		2012	59.11	46.45	46.26		40.29



Current Year

		Week 16 Ending Saturday			52-Weeks Ending Sat	
		18-Apr-09	% change	19-Apr-08	18-Apr-09	Date Occurred
Energy (MWh)	Total	232,260	-1%	235,746	13,379,824	
	Maximum	1,745	-1%	1,758	3,331	28-Jan-09
	Average	1,383	-1%	1,403	1,532	
Trading Demand (MW)	Maximum	958	-5%	1,009	847	11-Oct-08
	Average	79%		80%	46%	
Regional Load Factor (%)	Maximum	66.92	-27%	91.84	9999.92	
	Volume-Weighted Ave	28.98	-38%	46.74	71.25	
	Time-Weighted Ave	27.15	-40%	45.18	53.34	
	Minimum	-361.92	-1,815%	21.10	-1000.00	
Trading Price (\$/MWh)	Maximum	28.7	4%	27.7	45.7	
	Minimum	10.5	15%	9.1	0.7	

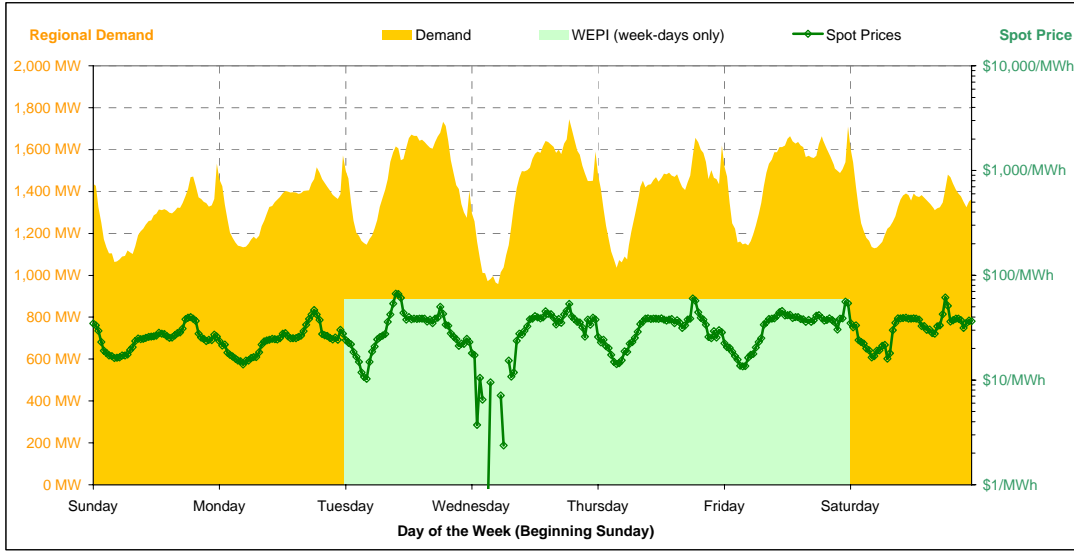


Note that prices below \$1/MWh have been reset to \$1/MWh for the purposes of this display

Current Week

All Data in this table is shown in MWh								
	Weekly Total	Sunday	Monday	Tuesday	Wednesday	Thursday	Friday	Saturday
<b>Total Production by Generation Company</b>								
AGL	38,485	3,138	3,400	6,911	7,430	6,464	7,056	4,088
International Power (Pelican Point)	57,544	4,867	4,910	7,690	9,922	10,015	10,121	10,021
International Power (Synergen)	3	0	0	0	0	0	3	0
Flinders Power	109,861	10,908	16,462	17,823	17,414	18,003	16,158	13,094
Origin Energy	2,234	0	0	370	659	0	656	549
Osborne	24,274	3,297	3,260	3,545	3,506	3,528	3,559	3,580
TRUenergy	50	0	0	31	0	0	19	0
Other SA Plants	3,360	491	351	433	745	330	145	866
<b>Total internal production</b>	<b>235,808</b>	<b>22,700</b>	<b>28,383</b>	<b>36,801</b>	<b>39,675</b>	<b>38,339</b>	<b>37,715</b>	<b>32,197</b>
(Load at Pumped Storage)	0	0	0	0	0	0	0	0
<b>Net internal production</b>	<b>235,808</b>	<b>22,700</b>	<b>28,383</b>	<b>36,801</b>	<b>39,675</b>	<b>38,339</b>	<b>37,715</b>	<b>32,197</b>
<b>Percentage each company's production represents of the total internal production</b>								
AGL	16.3%	13.8%	12.0%	18.8%	18.7%	16.9%	18.7%	12.7%
International Power (Pelican Point)	24.4%	21.4%	17.3%	20.9%	25.0%	26.1%	26.8%	31.1%
International Power (Synergen)	0.0%	0.0%	0.0%	0.0%	0.0%	0.0%	0.0%	0.0%
Flinders Power	46.6%	48.1%	58.0%	48.4%	43.9%	47.0%	42.8%	40.7%
Origin Energy	0.9%	0.0%	0.0%	1.0%	1.7%	0.0%	1.7%	1.7%
Osborne	10.3%	14.5%	11.5%	9.6%	8.8%	9.2%	9.4%	11.1%
TRUenergy	0.0%	0.0%	0.0%	0.1%	0.0%	0.0%	0.1%	0.0%
Other SA Plants	1.4%	2.2%	1.2%	1.2%	1.9%	0.9%	0.4%	2.7%
<b>Total Percentage</b>	<b>100.0%</b>	<b>100.0%</b>	<b>100.0%</b>	<b>100.0%</b>	<b>100.0%</b>	<b>100.0%</b>	<b>100.0%</b>	<b>100.0%</b>

Current Week (continued)



	Sunday	Monday	Tuesday	Wednesday	Thursday	Friday	Saturday
<b>For the Current Week</b>							
Total Energy (MWh)	30,531	32,034	35,294	33,564	33,385	35,498	31,966
Trading Demand Target (MW)	Maximum	1,533	1,572	1,733	1,745	1,656	1,604
	Average	1,272	1,335	1,471	1,399	1,391	1,479
	Minimum	1,064	1,134	1,146	958	1,036	1,143
Regional Load Factor (%)	83%	85%	85%	80%	84%	86%	83%
Wholesale Electricity Price Index (WEPI)	N/A	#N/A	59.03	59.16	58.19	58.54	N/A
	Maximum	40.02	46.55	66.92	53.38	59.97	55.81
	Volume-Weighted Ave	26.13	25.24	33.08	18.62	32.29	34.13
Trading Price (\$/MWh)	Time-Weighted Ave	25.62	24.73	31.80	11.54	31.32	32.99
	Minimum	16.18	14.08	10.27	-361.92	14.24	13.55
	Maximum	28.7	28.5	24.9	18.9	20.8	21.7
Temperature °C (Adelaide)	Minimum	10.5	11.3	14.1	14.7	11.5	11.8
<b>Percentage Change from Same Week Last Year</b>							
Total Energy (MWh)	0%	-11%	-1%	-2%	-3%	3%	4%
Trading Demand Target (MW)	Maximum	-2%	-11%	4%	7%	1%	9%
	Average	0%	-11%	-1%	-2%	-3%	3%
	Minimum	5%	2%	3%	-11%	-3%	6%
Wholesale Electricity Price Index (WEPI)	N/A	N/A	-15%	-15%	-17%	-17%	N/A
	Maximum	-56%	-47%	-13%	-33%	-34%	-28%
	Volume-Weighted Ave	-29%	-46%	-27%	-63%	-40%	-32%
Trading Price (\$/MWh)	Time-Weighted Ave	-28%	-45%	-29%	-76%	-40%	-32%
	Minimum	-23%	-40%	-58%	-1,435%	-51%	-39%
	Maximum	59%	38%	14%	-20%	-9%	-11%
Temperature °C (Adelaide)	Minimum	-25%	-1%	42%	17%	26%	58%
<b>For the Same Week Last Year</b>							
Total Energy (MWh)	30,388	35,962	35,501	34,316	34,322	34,605	30,654
Trading Demand Target (MW)	Maximum	1,559	1,758	1,666	1,624	1,643	1,659
	Average	1,266	1,498	1,479	1,430	1,430	1,442
	Minimum	1,009	1,109	1,113	1,074	1,066	1,083
Regional Load Factor (%)	81%	85%	89%	88%	87%	87%	86%
Wholesale Electricity Price Index (WEPI)	N/A	70.38	69.83	69.49	70.06	70.36	N/A
	Maximum	91.84	88.64	76.94	79.18	90.89	83.50
	Volume-Weighted Ave	36.89	46.66	45.58	50.18	53.86	50.47
Trading Price (\$/MWh)	Time-Weighted Ave	35.48	45.23	44.51	48.77	52.35	48.76
	Minimum	21.10	23.34	24.55	27.12	29.31	22.36
	Maximum	18.1	20.6	21.9	23.5	22.8	24.3
Temperature °C (Adelaide)	Minimum	14.0	11.4	9.9	12.6	9.1	14.3

Long-Term Trends

This table contains electricity futures pricing, supplied by d-cyphatrade. All data other than flat and peak quarterly pricing is implied.

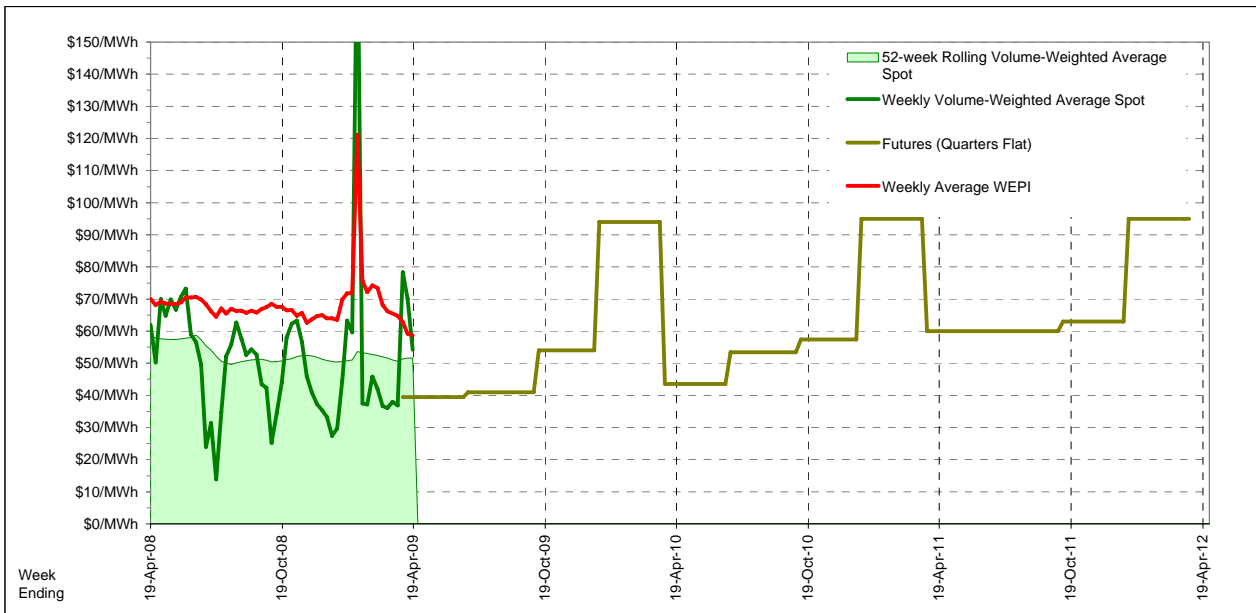
<i>Futures settlement prices</i> for flat load (all times)	CalYear	FinYear Ending	Q1	Q2	Q3	Q4
	2009			39.50	41.00	54.00
	2010	61.99	57.98	94.00	43.55	53.45
	2011	69.39	66.34	95.00	60.00	63.00
	2012	69.46	69.46	95.00		

<i>Futures settlement prices</i> for peak load (7am-10pm M-F)	CalYear	FinYear Ending	Q1	Q2	Q3	Q4
	2009			54.00	50.70	86.50
	2010	78.02	75.30	102.00	63.00	73.00
	2011	55.88	70.94	100.00	36.50	42.75
	2012	56.06	56.05	100.00		

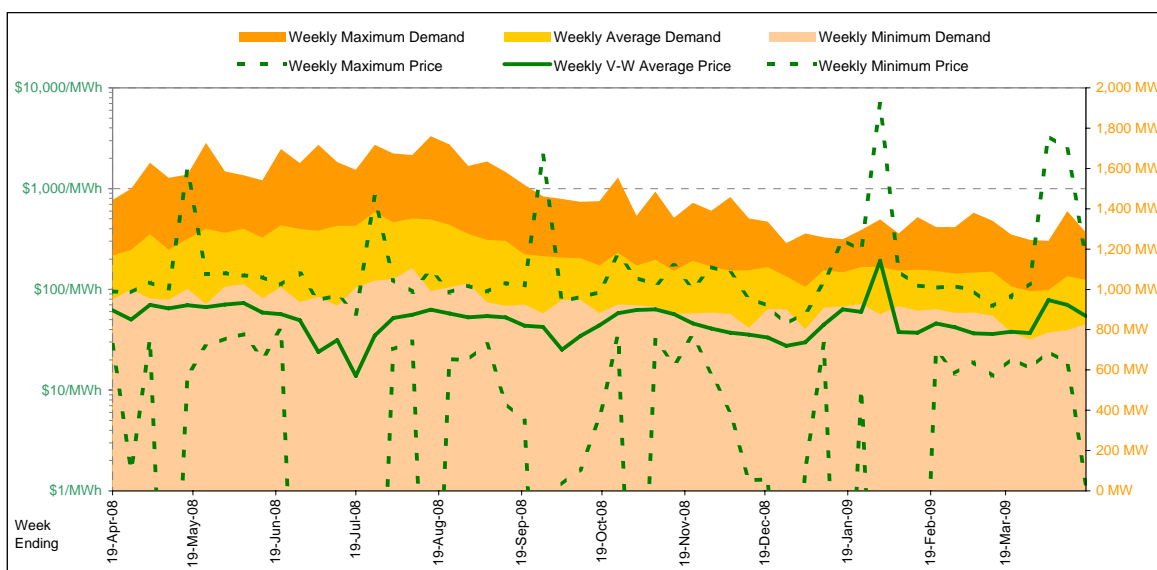
  

<i>Implied Prices</i> for Off-Peak Load (All other times)	CalYear	FinYear Ending	Q1	Q2	Q3	Q4
	2009			27.81	33.18	27.79
	2010	49.06	44.01	87.55	27.86	37.68
	2011	80.29	62.63	90.97	78.95	73.91
	2012	80.27	80.27	90.97		



Current Year

		Week 16 Ending Saturday		52-Weeks Ending Sat		
		18-Apr-09	% change	19-Apr-08	18-Apr-09	Date Occurred
Energy (MWh)	Total	175,798	-10%	196,267	10,262,386	
	Maximum	1,282	-11%	1,444	1,760	11-Aug-08
	Average	1,046	-10%	1,168	1,175	
Trading Demand (MW)	Minimum	828	-13%	950	751	22-Mar-09
	Regional Load Factor (%)	82%		81%	67%	
Trading Price (\$/MWh)	Maximum	205.69	116%	95.34	6880.22	
	Volume-Weighted Ave	54.23	-13%	62.04	51.52	
	Time-Weighted Ave	54.21	-11%	60.92	50.25	
	Minimum	1.16	-96%	28.20	-999.76	
Temperature °C (Hobart)	Maximum	24.6	26%	19.5	33.5	
	Minimum	7.2	11%	6.5	0.3	

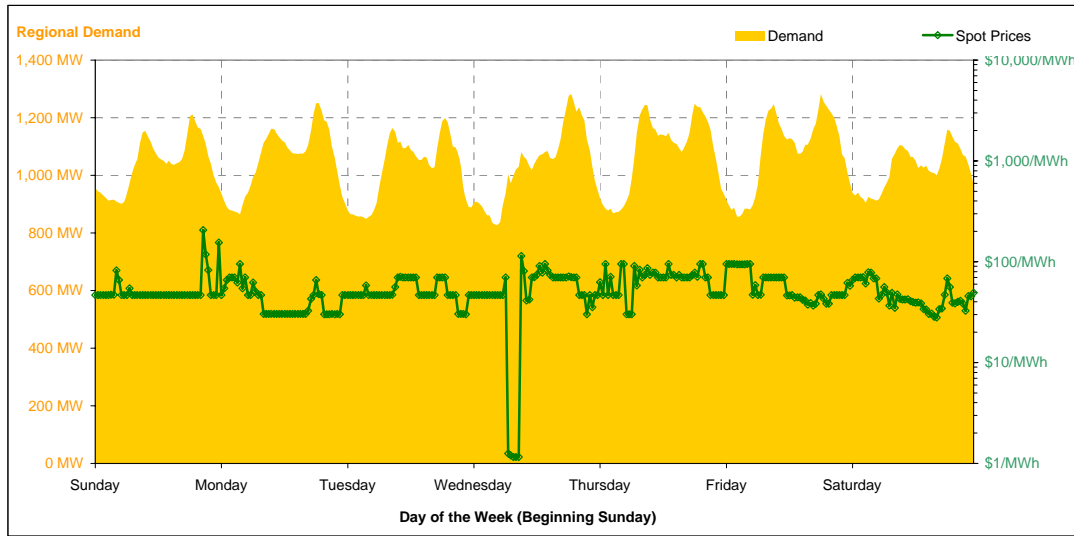


Note that prices below \$1/MWh have been reset to \$1/MWh for the purposes of this display

Current Week

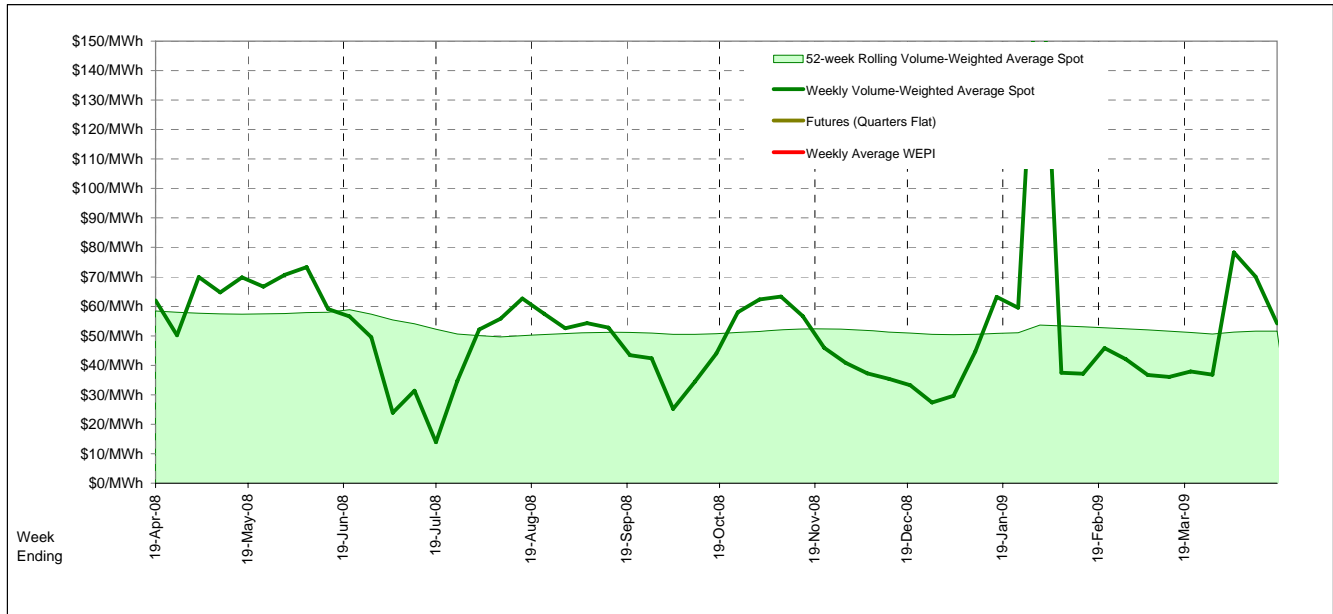
All Data in this table is shown in MWh								
Weekly Total	Sunday	Monday	Tuesday	Wednesday	Thursday	Friday	Saturday	
<b>Total Production by Generation Company</b>								
Aurora Energy	318	0	0	0	0	0	210	109
Hydro Tasmania	115,988	15,655	16,103	15,647	16,993	17,678	17,363	16,550
Bell Bay Power	1,435	479	365	99	86	280	128	0
Other TAS Plants	0	0	0	0	0	0	0	0
<b>Total internal production</b>	<b>117,741</b>	<b>16,134</b>	<b>16,468</b>	<b>15,746</b>	<b>17,079</b>	<b>17,958</b>	<b>17,700</b>	<b>16,658</b>
(Load at Pumped Storage)	0	0	0	0	0	0	0	0
<b>Net internal production</b>	<b>117,741</b>	<b>16,134</b>	<b>16,468</b>	<b>15,746</b>	<b>17,079</b>	<b>17,958</b>	<b>17,700</b>	<b>16,658</b>
<b>Percentage each company's production represents of the total internal production</b>								
Aurora Energy	0.3%	0.0%	0.0%	0.0%	0.0%	0.0%	1.2%	0.7%
Hydro Tasmania	98.5%	97.0%	97.8%	99.4%	99.5%	98.4%	98.1%	99.3%
Bell Bay Power	1.2%	3.0%	2.2%	0.6%	0.5%	1.6%	0.7%	0.0%
Other TAS Plants	0.0%	0.0%	0.0%	0.0%	0.0%	0.0%	0.0%	0.0%
<b>Total Percentage</b>	<b>100.0%</b>	<b>100.0%</b>	<b>100.0%</b>	<b>100.0%</b>	<b>100.0%</b>	<b>100.0%</b>	<b>100.0%</b>	<b>100.0%</b>

Current Week (continued)



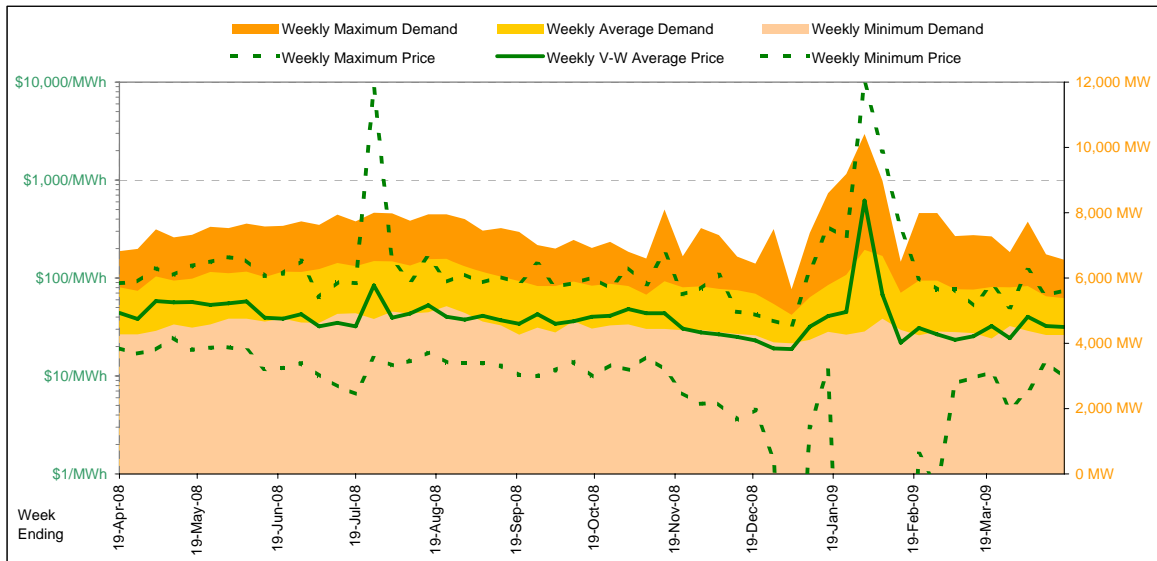
		Sunday	Monday	Tuesday	Wednesday	Thursday	Friday	Saturday
<b>For the Current Week</b>								
Total Energy (MWh)		24,919	25,264	24,483	24,856	25,841	25,935	24,501
Trading Demand Target (MW)	Maximum	1,211	1,251	1,199	1,282	1,249	1,282	1,159
	Average	1,038	1,053	1,020	1,036	1,077	1,081	1,021
	Minimum	901	865	849	828	868	857	905
Regional Load Factor (%)	Maximum	205.69	94.81	71.18	113.95	94.81	94.78	78.46
	Average	86%	84%	85%	81%	86%	84%	88%
Trading Price (\$/MWh)	Volume-Weighted Ave	56.02	41.94	52.22	55.10	67.89	58.75	47.02
	Time-Weighted Ave	55.91	42.96	51.65	54.12	66.94	60.33	47.54
	Minimum	46.74	30.24	30.25	1.16	30.24	36.82	28.10
Temperature °C (Hobart)	Maximum	18.0	20.2	24.6	14.6	18.1	19.3	20.0
	Minimum	9.4	11.2	8.1	11.0	7.2	11.2	13.1
<b>Percentage Change from Same Week Last Year</b>								
Total Energy (MWh)		-10%	-14%	-15%	-10%	-7%	-11%	-5%
Trading Demand Target (MW)	Maximum	-13%	-13%	-15%	-7%	-9%	-11%	-8%
	Average	-10%	-14%	-15%	-10%	-7%	-11%	-5%
	Minimum	-9%	-16%	-16%	-15%	-13%	-16%	-5%
Trading Price (\$/MWh)	Maximum	116%	7%	-12%	37%	7%	11%	-13%
	Volume-Weighted Ave	21%	-32%	-21%	-17%	1%	-12%	-21%
	Time-Weighted Ave	25%	-29%	-20%	-17%	1%	-9%	-19%
Temperature °C (Hobart)	Maximum	66%	7%	-3%	-98%	-37%	18%	-10%
	Minimum	2%	25%	32%	-25%	5%	21%	3%
		1%	30%	17%	29%	-19%	45%	102%
<b>For the Same Week Last Year</b>								
Total Energy (MWh)		27,772	29,404	28,758	27,618	27,674	29,130	25,912
Trading Demand Target (MW)	Maximum	1,392	1,444	1,410	1,379	1,368	1,439	1,261
	Average	1,157	1,225	1,198	1,151	1,153	1,214	1,080
	Minimum	986	1,027	1,014	976	992	1,025	950
Regional Load Factor (%)	Maximum	83%	85%	85%	83%	84%	84%	86%
	Average	95.34	88.60	81.18	83.32	88.76	85.57	90.34
Trading Price (\$/MWh)	Volume-Weighted Ave	46.18	61.57	65.70	66.34	67.52	66.94	59.54
	Time-Weighted Ave	44.83	60.42	64.40	65.47	66.55	66.22	58.58
	Minimum	28.20	28.20	31.20	48.28	48.30	31.24	31.20
Temperature °C (Hobart)	Maximum	17.7	16.1	18.6	19.5	17.3	15.9	19.5
	Minimum	9.3	8.6	6.9	8.5	8.9	7.7	6.5

Long-Term Trends



Current Year

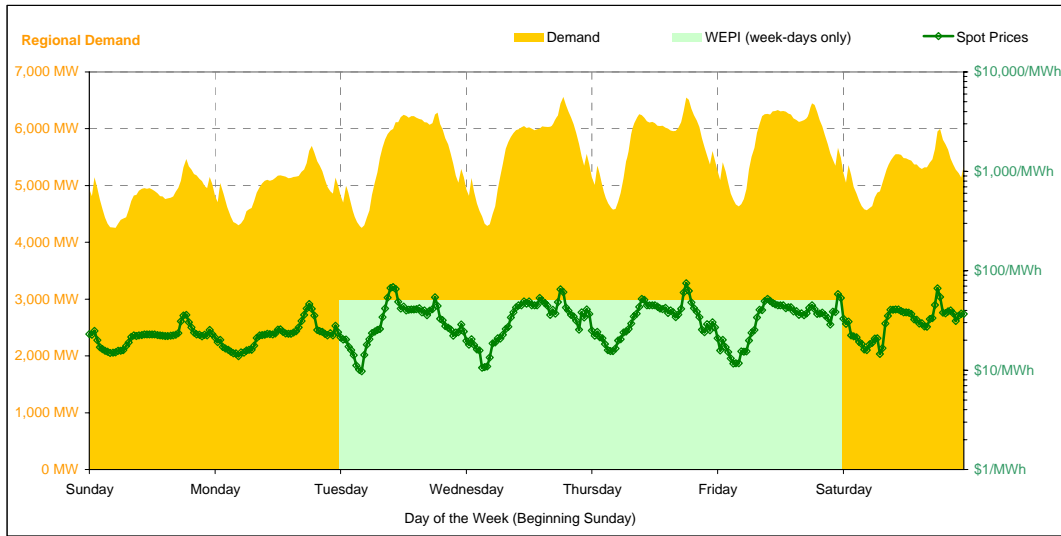
		Week 16 Ending Saturday			52-Weeks Ending Sat	
		18-Apr-09	% change	19-Apr-08	18-Apr-09	Date Occurred
Energy (MWh)	Total	904,171	-6%	960,861	51,858,359	
	Maximum	6,561	-4%	6,824	10,415	29-Jan-09
	Average	5,382	-6%	5,719	5,936	
Trading Demand (MW)	Maximum	4,255	-0%	4,271	4,004	28-Dec-08
	Minimum					
Regional Load Factor (%)		82%		84%	57%	
Trading Price (\$/MWh)	Maximum	74.80	-16%	88.55	10000.00	
	Volume-Weighted Ave	31.52	-28%	43.94	52.22	
	Time-Weighted Ave	30.30	-29%	42.47	44.77	
	Minimum	9.77	-49%	19.28	-496.71	
Temperature °C (Melbourne)	Maximum	28.8	16%	24.8	46.4	
	Minimum	7.3	-22%	9.4	2.2	



Current Week

All Data in this table is shown in MWh								
	Weekly Total	Sunday	Monday	Tuesday	Wednesday	Thursday	Friday	Saturday
<b>Total Production by Generation Company</b>								
AGL	2,824	145	179	1,141	392	290	339	339
Anglesea	25,566	3,840	3,825	3,536	3,808	3,523	3,222	3,813
Babcock & Brown Power	528	35	35	35	35	143	213	35
Ecogen Energy	22,670	0	0	6,263	6,447	5,114	4,847	0
Energy Brix	24,414	3,618	3,605	3,635	3,167	3,171	3,582	3,638
International Power (Hazelwood)	218,774	32,908	32,277	32,382	31,892	28,695	28,357	32,263
Loy Yang B	113,191	12,570	12,318	12,451	12,582	14,026	25,196	24,049
Loy Yang Power	332,089	49,836	48,158	45,960	50,479	51,808	47,398	38,450
Snowy Hydro	23,437	0	191	6,755	5,757	4,139	6,114	481
TRUenergy	243,254	34,832	34,753	34,445	34,257	34,929	34,883	35,157
Other VIC Plants	0	0	0	0	0	0	0	0
<b>Total internal production</b>	<b>1,006,746</b>	<b>137,783</b>	<b>135,340</b>	<b>146,600</b>	<b>148,815</b>	<b>145,837</b>	<b>154,150</b>	<b>138,223</b>
(Load at Pumped Storage)	0	0	0	0	0	0	0	0
<b>Net internal production</b>	<b>1,006,746</b>	<b>137,783</b>	<b>135,340</b>	<b>146,600</b>	<b>148,815</b>	<b>145,837</b>	<b>154,150</b>	<b>138,223</b>
<b>Percentage each company's production represents of the total internal production</b>								
AGL	0.3%	0.1%	0.1%	0.8%	0.3%	0.2%	0.2%	0.2%
Anglesea	2.5%	2.8%	2.8%	2.4%	2.6%	2.4%	2.1%	2.8%
Babcock & Brown Power	0.1%	0.0%	0.0%	0.0%	0.0%	0.1%	0.1%	0.0%
Ecogen Energy	2.3%	0.0%	0.0%	4.3%	4.3%	3.5%	3.1%	0.0%
Energy Brix	2.4%	2.6%	2.7%	2.5%	2.1%	2.2%	2.3%	2.6%
International Power (Hazelwood)	21.7%	23.9%	23.8%	22.1%	21.4%	19.7%	18.4%	23.3%
Loy Yang B	11.2%	9.1%	9.1%	8.5%	8.5%	9.6%	16.3%	17.4%
Loy Yang Power	33.0%	36.2%	35.6%	31.4%	33.9%	35.5%	30.7%	27.8%
Snowy Hydro	2.3%	0.0%	0.1%	4.6%	3.9%	2.8%	4.0%	0.3%
TRUenergy	24.2%	25.3%	25.7%	23.5%	23.0%	24.0%	22.6%	25.4%
Other VIC Plants	0.0%	0.0%	0.0%	0.0%	0.0%	0.0%	0.0%	0.0%
<b>Total Percentage</b>	<b>100.0%</b>	<b>100.0%</b>	<b>100.0%</b>	<b>100.0%</b>	<b>100.0%</b>	<b>100.0%</b>	<b>100.0%</b>	<b>100.0%</b>

Current Week (continued)



	Sunday	Monday	Tuesday	Wednesday	Thursday	Friday	Saturday	
<b>For the Current Week</b>								
Total Energy (MWh)	116,248	119,522	132,488	134,171	136,929	138,457	126,356	
Trading Demand Target (MW)	Maximum	5,465	5,699	6,286	6,561	6,548	6,448	5,999
	Average	4,844	4,980	5,520	5,590	5,705	5,769	5,265
	Minimum	4,256	4,302	4,255	4,290	4,578	4,633	4,564
Regional Load Factor (%)	89%	87%	88%	85%	87%	89%	88%	
Wholesale Electricity Price Index (WEPI)	Maximum	N/A	#N/A	50.19	51.05	50.62	50.42	N/A
	Average	36.00	46.36	68.44	64.98	74.80	58.24	66.40
	Minimum	22.22	23.67	34.01	35.47	35.62	34.92	32.52
Trading Price (\$/MWh)	Volume-Weighted Ave	21.97	23.24	32.56	34.05	34.47	33.85	31.92
	Time-Weighted Ave	14.86	13.76	9.77	10.61	15.49	11.66	14.55
	Minimum	21.9	26.2	28.8	17.7	20.5	21.9	19.2
Temperature °C (Melbourne)	Maximum	12.3	9.8	12.1	12.9	7.3	13.2	13.8
	Minimum							
<b>Percentage Change from Same Week Last Year</b>								
Total Energy (MWh)	-5%	-16%	-7%	-6%	-4%	-2%	-1%	
Trading Demand Target (MW)	Maximum	-10%	-16%	-6%	-2%	-3%	-2%	1%
	Average	-5%	-16%	-7%	-6%	-4%	-2%	-1%
	Minimum	-0%	-6%	-11%	-9%	-2%	-2%	1%
Wholesale Electricity Price Index (WEPI)	N/A	N/A	-2%	0%	0%	-0%	N/A	
Trading Price (\$/MWh)	Maximum	-59%	-47%	-11%	-19%	-15%	-28%	-20%
	Volume-Weighted Ave	-34%	-46%	-22%	-27%	-30%	-25%	-15%
	Time-Weighted Ave	-33%	-45%	-24%	-28%	-30%	-25%	-16%
Temperature °C (Melbourne)	Maximum	-23%	-33%	-55%	-59%	-41%	-43%	-31%
	Minimum	16%	33%	42%	-11%	12%	4%	-23%
Temperature °C (Melbourne)	Maximum	3%	-14%	3%	37%	-42%	5%	42%
	Minimum							
<b>For the Same Week Last Year</b>								
Total Energy (MWh)	122,078	142,303	143,229	142,457	141,966	141,723	127,106	
Trading Demand Target (MW)	Maximum	6,101	6,824	6,722	6,696	6,734	6,549	5,963
	Average	5,087	5,929	5,968	5,936	5,915	5,905	5,296
	Minimum	4,271	4,576	4,772	4,699	4,657	4,729	4,527
Regional Load Factor (%)	83%	87%	89%	89%	88%	90%	89%	
Wholesale Electricity Price Index (WEPI)	Maximum	N/A	51.32	51.31	51.00	50.48	50.63	N/A
	Average	88.55	87.60	77.21	79.79	88.46	81.34	83.05
	Minimum	33.68	43.80	43.84	48.44	50.96	46.37	38.44
Trading Price (\$/MWh)	Volume-Weighted Ave	32.62	42.34	42.75	47.21	49.56	45.04	37.80
	Time-Weighted Ave	19.28	20.39	21.69	25.58	26.29	20.33	20.95
	Minimum	18.9	19.7	20.3	19.8	18.3	21.0	24.8
Temperature °C (Melbourne)	Maximum	12.0	11.4	11.7	9.4	12.5	12.6	9.7
	Minimum							

Long-Term Trends

This table contains electricity futures pricing, supplied by d-cyphatrade. All data other than flat and peak quarterly pricing is implied.

		CalYear	FinYear Ending	Q1	Q2	Q3	Q4
<b>Actual Prices for Flat Load (All Times)</b>	2009				39.00	41.00	40.25
	2010	51.94	48.86	71.20	43.40	47.00	46.50
	2011	61.04	56.25	81.00	51.00	56.50	56.00
	2012	69.00	66.74	96.15			
<b>Actual Prices for Peak Load (7am-10pm M-F)</b>	2009				56.25	57.75	57.50
	2010	76.45	73.71	122.00	59.65	62.00	64.00
	2011	77.57	78.40	139.20	50.20	57.20	65.55
	2012	79.08	79.05	144.20			
<b>Implied Prices for Off-Peak Load (All other times)</b>	2009				25.09	27.49	26.34
	2010	32.17	28.82	30.23	30.30	34.90	32.39
	2011	47.71	38.39	34.06	51.65	55.94	48.30
	2012	60.87	56.81	57.40			

