

## AER cuts rate of return, though less than draft proposal

The Australian Energy Regulator has cut the regulated rate of return for energy network businesses following its first five-yearly industry-wide review of the weighted average cost of capital parameters, however the revised rate of 8.82 per cent is an increase on the AER's draft decision of 8.47 per cent.

The final decision to set the revised WACC at 8.82 per cent is an increase of 0.35 per cent on the draft proposal but a drop of 0.32 per cent on the previous WACC of 9.14 per cent for electricity transmission network service providers and distribution network service providers in New South Wales, the Australian Capital Territory and Victoria.

The previous WACC for Queensland, Tasmanian and South Australian electricity distribution network service providers had been 8.90 per cent.

According to the AER, industry submissions following its draft decision in December 2008 had highlighted several broader challenges that stakeholders considered must be taken into account in determining the overall rate of return as part of its review.

The Energy Supply Association of Australia had argued that the coming decade will see considerable pressure and stress within the energy industry as it transitions to a low emission energy supply system and dramatically increases the proportion of renewable energy, noting that the current global financial crisis has further challenged the sector's ability to access sufficient capital at reasonable rates to make this transition.

"Efficient and timely investment in network infrastructure will be a critical component of making this as smooth a transition as possible and the need for investor confidence is paramount," says esaa.

In its final decision, the AER says the process of determining WACC values had been particularly difficult in light of the extraordinary conditions in world economies and financial markets.

"As a result, the AER has revised a number of the WACC parameters from the currently deemed values, including some changes from those set out in its draft position," says AER Chairman Steve Edwell.

"The AER's revised WACC parameter values and methods are expected to provide an overall rate of return that is likely to contribute to and achieve an outcome which is consistent with the national electricity objective of promoting efficient investment in electricity networks for the long-term interests of consumers."

Energy Supply Association of Australia Chief Executive Officer Clare Savage says the sector is assessing the decision in detail and has been encouraged by some aspects but has concerns about others.

### This week's volume-weighted electricity price (\$/MWh)

NSW:	\$35.77
Vic:	\$36.41
Qld:	\$34.33
SA:	\$34.43
Tas:	\$49.20































## Jobs on Offer

### List industry jobs

esaa Full Members are invited to submit industry-related employment opportunities. This is a complimentary service. Email notices to [newseditor@esaa.com.au](mailto:newseditor@esaa.com.au) by close of business Thursday.

### Energy Policy Adviser

An opportunity exists for an **Energy Policy Adviser** to support the development of esaa's energy policy and advocacy work.

The **Energy Policy Adviser** reports to the Policy Development Manager and is responsible for researching and analysing policy developments and providing advice on a range of energy policy issues. The position requires the preparation of high level briefing papers and submissions. The successful candidate must have the capacity for expert analysis of energy markets. The ability to work with representatives of all levels of business and government is also necessary. Located in the Melbourne CBD, the role requires sound oral and written communication skills. Applicants should be tertiary educated, preferably in economics, law or engineering, or with directly relevant experience. Salary will be negotiated based on experience.

Interested applicants should contact Nicholas Wilson on 03 9670 0188 for a detailed position description. Written applications should address the key aspects of the position description. Applications should be lodged at [recruitment@esaa.com.au](mailto:recruitment@esaa.com.au).

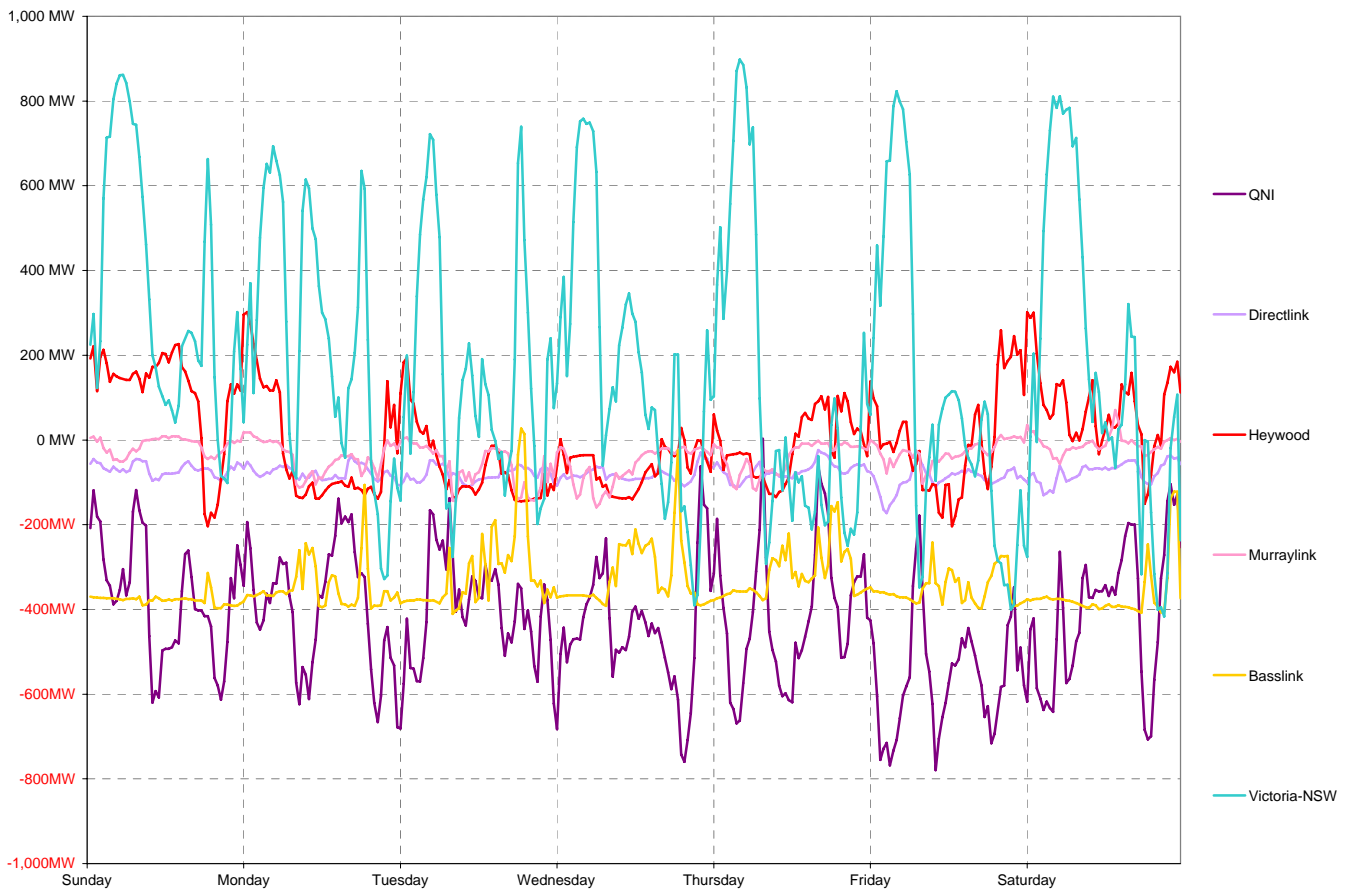
# National Electricity Market Report

Week 17 Ending Saturday 25-Apr-09

## Daily Inter-Regional Energy Flow

	Daily Net Exports (or Imports)							Weekly Total
	Sunday	Monday	Tuesday	Wednesday	Thursday	Friday	Saturday	
<b>For the Current Week</b>								
NSW	-18,726	-16,914	-15,500	-16,645	-14,094	-17,724	-15,545	-115,147
Queensland	10,626	11,470	11,589	12,586	11,624	15,764	11,410	85,068
South Australia	-2,406	1,634	3,101	2,915	1,216	643	-1,613	5,490
Tasmania	-9,060	-8,365	-7,581	-7,690	-7,581	-8,433	-8,753	-57,461
Victoria	19,566	12,176	8,391	8,835	8,835	9,750	14,500	82,051
<b>MWh Change from Same Week Last Year</b>								
NSW	-6,036	1,287	8,359	3,353	2,203	-3,253	-181	5,733
Queensland	-13,904	-15,552	-14,176	-11,696	-13,193	-11,607	-14,880	-95,006
South Australia	1,331	5,343	5,357	8,460	7,333	4,291	1,356	33,469
Tasmania	1,586	1,842	2,768	803	-1,386	1,980	330	7,922
Victoria	14,605	21,714	13,698	14,022	15,439	5,060	8,482	93,019
<b>For the Same Week Last Year</b>								
NSW	-12,690	-18,201	-23,859	-19,998	-16,297	-14,472	-15,365	-120,880
Queensland	24,529	27,021	25,765	24,282	24,817	27,371	26,290	180,074
South Australia	-3,736	-3,710	-2,256	-5,545	-6,117	-3,648	-2,969	-27,980
Tasmania	-10,646	-10,206	-10,349	-8,493	-6,195	-10,413	-9,083	-65,383
Victoria	4,961	-9,538	-5,307	-5,188	-6,605	4,690	6,019	-10,968

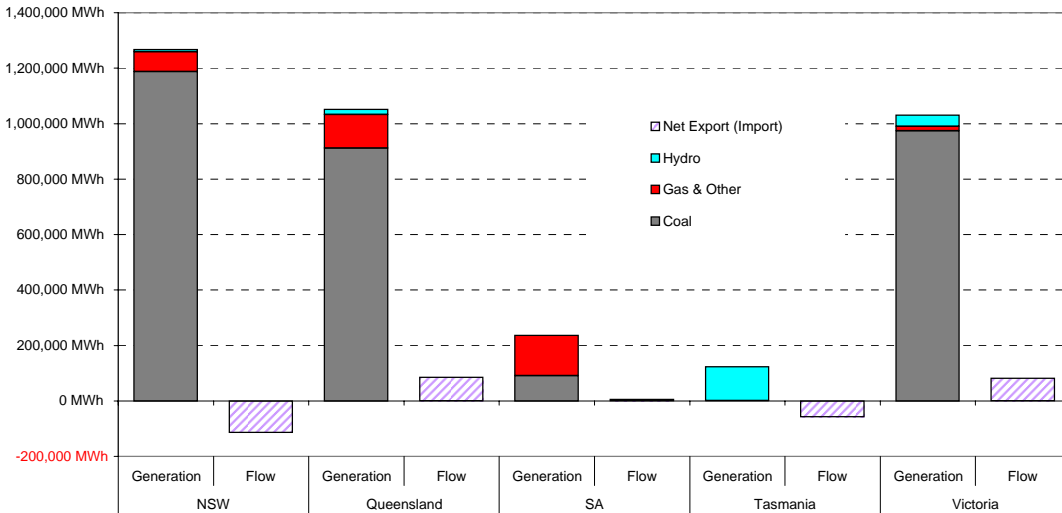
## Interconnector energy flow throughout the week



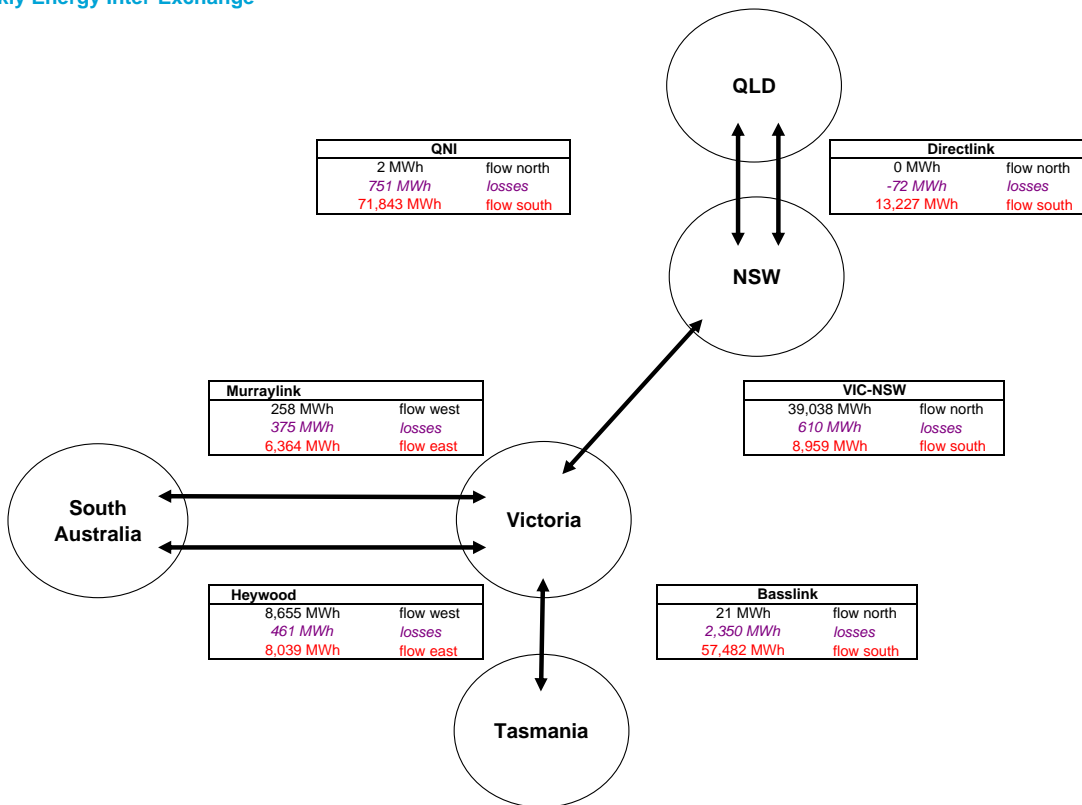
### Generation by Fuel Type

*All data in this table is shown in MWh for the week*

	NSW		Queensland		SA		Tasmania		Victoria		Whole of NEM	
	Generation	Flow	Generation	Flow	Generation	Flow	Generation	Flow	Generation	Flow	Generation	Flow
Coal	1,188,085		911,776		90,926		0		973,963		3,164,749	
Gas & Other	70,861		121,579		145,381		555		15,919		354,294	
Hydro	8,409		18,164		0		122,214		40,662		189,449	
Pump Storage	0		-570		0		0		0		-570	
<b>Total Generation</b>	<b>1,267,354</b>		<b>1,050,949</b>		<b>236,307</b>		<b>122,769</b>		<b>1,030,543</b>		<b>3,707,922</b>	
Total Exports		8,961		85,070		14,402		21		105,432		
Total Imports		124,108		2		8,913		57,482		23,382		
<b>Net Export (Import)</b>		<b>-115,147</b>		<b>85,068</b>		<b>5,490</b>		<b>-57,461</b>		<b>82,051</b>		
Net Consumption	1,382,501		965,881		230,818		180,230		948,493			

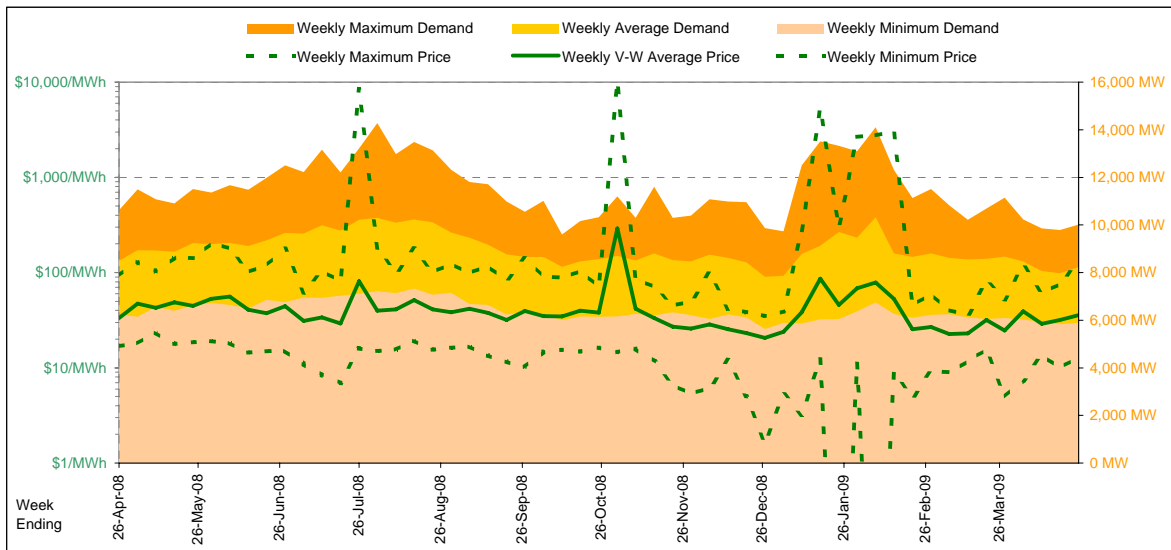


### Weekly Energy Inter-Exchange



Current Year

		Week 17 Ending Saturday			52-weeks ending Sat	
		25-Apr-09	% change	26-Apr-08	25-Apr-09	Date Occurred
Energy (MWh)	Total	1,381,722	-3%	1,426,491	78,611,313	
	Maximum	10,011	-6%	10,628	14,274	28-Aug-08
	Average	8,225	-3%	8,491	8,999	
	Minimum	5,891	-6%	6,235	5,632	26-Dec-08
Regional Load Factor (%)		82%		80%	63%	
Trading Price (\$/MWh)	Maximum	133.29	44%	92.26	10000.00	
	Volume-Weighted Ave	35.77	7%	33.33	44.64	
	Time-Weighted Ave	34.25	6%	32.31	40.70	
	Minimum	12.80	-24%	16.92	-170.76	
Temperature °C (Sydney)	Maximum	24.7	-0%	24.8	40.9	
	Minimum	13.1	3%	12.7	5.3	

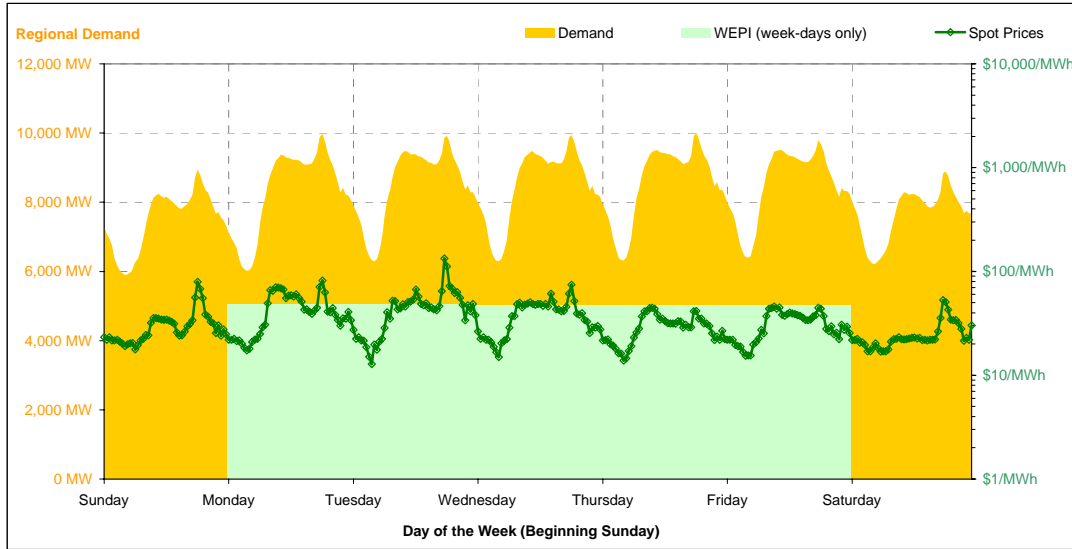


Note that prices below \$1/MWh have been reset to \$1/MWh for the purposes of this display

Current Week

All Data in this table is shown in MWh								
	Weekly Total	Sunday	Monday	Tuesday	Wednesday	Thursday	Friday	Saturday
<b>Total Production by Generation Company</b>								
Babcock & Brown Power	8,784	0	0	12	9	1,639	3,563	3,563
Delta Electricity	358,215	41,186	43,798	44,246	48,075	61,091	60,737	59,084
Eraring Energy	288,418	41,387	42,778	42,486	42,192	40,624	39,273	39,680
Macquarie Generation	532,687	72,869	80,003	84,402	81,632	76,244	73,467	64,072
Marubeni	20,088	1,920	3,247	3,197	3,247	3,279	3,279	1,920
Snowy Hydro (NSW)	8,409	0	1,678	2,884	2,097	881	576	294
TRUenergy	41,233	3,778	8,118	8,235	8,253	6,870	5,981	0
Origin Energy	9,522	0	3,514	3,314	1,856	839	0	0
Other NSW Plants	0	0	0	0	0	0	0	0
<b>Total internal production</b>	<b>1,267,354</b>	<b>161,138</b>	<b>183,133</b>	<b>188,774</b>	<b>187,359</b>	<b>191,466</b>	<b>186,873</b>	<b>168,612</b>
(Load at Pumped Storage)	0	0	0	0	0	0	0	0
<b>Net internal production</b>	<b>1,267,354</b>	<b>161,138</b>	<b>183,133</b>	<b>188,774</b>	<b>187,359</b>	<b>191,466</b>	<b>186,873</b>	<b>168,612</b>
<b>Percentage each company's production represents of the total internal production</b>								
Babcock & Brown Power	0.7%	0.0%	0.0%	0.0%	0.0%	0.9%	1.9%	2.1%
Delta Electricity	28.3%	25.6%	23.9%	23.4%	25.7%	31.9%	32.5%	35.0%
Eraring Energy	22.8%	25.7%	23.4%	22.5%	22.5%	21.2%	21.0%	23.5%
Macquarie Generation	42.0%	45.2%	43.7%	44.7%	43.6%	39.8%	39.3%	38.0%
Marubeni	1.6%	1.2%	1.8%	1.7%	1.7%	1.7%	1.8%	1.1%
Snowy Hydro (NSW)	0.7%	0.0%	0.9%	1.5%	1.1%	0.5%	0.3%	0.2%
TRUenergy	3.3%	2.3%	4.4%	4.4%	4.4%	3.6%	3.2%	0.0%
Origin Energy	0.8%	0.0%	1.9%	1.8%	1.0%	0.4%	0.0%	0.0%
Other NSW Plants	0.0%	0.0%	0.0%	0.0%	0.0%	0.0%	0.0%	0.0%
<b>Total Percentage</b>	<b>100.0%</b>	<b>100.0%</b>	<b>100.0%</b>	<b>100.0%</b>	<b>100.0%</b>	<b>100.0%</b>	<b>100.0%</b>	<b>100.0%</b>

Current Week (continued)



	Sunday	Monday	Tuesday	Wednesday	Thursday	Friday	Saturday
<b>For the Current Week</b>							
Total Energy (MWh)	179,821	200,012	204,239	203,928	205,416	204,312	183,995
Trading Demand Target (MW)	Maximum	8,947	9,970	9,920	9,946	10,011	8,892
	Average	7,493	8,334	8,510	8,497	8,559	8,513
	Minimum	5,891	6,016	6,294	6,300	6,321	6,401
Regional Load Factor (%)	84%	84%	86%	85%	85%	87%	86%
Wholesale Electricity Price Index (WEPI)	N/A	47.50	47.87	47.20	46.91	46.70	N/A
	Maximum	79.57	81.64	133.29	74.72	44.53	53.00
	Volume-Weighted Ave	31.25	44.43	47.30	39.36	29.85	31.79
	Time-Weighted Ave	30.20	42.25	45.14	37.89	28.92	30.79
	Minimum	17.79	17.39	12.80	15.00	13.83	15.34
Temperature °C (Sydney)	Maximum	22.5	21.4	22.1	22.7	21.6	23.9
	Minimum	15.8	15.9	16.4	16.0	14.7	13.1
<b>Percentage Change from Same Week Last Year</b>							
Total Energy (MWh)	-5%	-6%	-5%	-5%	-4%	7%	-3%
Trading Demand Target (MW)	Maximum	-6%	-6%	-6%	-6%	-3%	5%
	Average	-5%	-6%	-5%	-5%	-4%	7%
	Minimum	-6%	-6%	-6%	-5%	-4%	-1%
Wholesale Electricity Price Index (WEPI)	N/A	2%	2%	2%	1%	4%	N/A
Trading Price (\$/MWh)	Maximum	5%	3%	44%	63%	-7%	45%
	Volume-Weighted Ave	3%	16%	14%	11%	-5%	15%
	Time-Weighted Ave	2%	14%	12%	8%	-7%	13%
	Minimum	-7%	-19%	-38%	-35%	-42%	-15%
Temperature °C (Sydney)	Maximum	18%	11%	9%	27%	8%	17%
	Minimum	4%	8%	14%	9%	0%	-22%
<b>For the Same Week Last Year</b>							
Total Energy (MWh)	189,819	211,658	216,053	214,901	214,055	190,629	189,376
Trading Demand Target (MW)	Maximum	9,562	10,587	10,563	10,628	10,337	9,302
	Average	7,909	8,819	9,002	8,954	8,919	7,943
	Minimum	6,235	6,405	6,725	6,636	6,763	6,436
Regional Load Factor (%)	83%	83%	85%	84%	86%	85%	87%
Wholesale Electricity Price Index (WEPI)	N/A	46.68	46.88	46.42	46.43	44.93	N/A
	Maximum	75.91	79.05	92.26	45.74	48.01	50.67
	Volume-Weighted Ave	30.42	38.42	41.50	35.59	31.38	27.66
	Time-Weighted Ave	29.52	37.12	40.18	35.01	30.99	27.19
	Minimum	19.05	21.46	20.67	23.20	23.71	18.00
Temperature °C (Sydney)	Maximum	19.1	19.3	20.3	17.9	20.0	21.2
	Minimum	15.2	14.7	14.4	14.7	14.7	16.8

Long-Term Trends

This table contains electricity futures pricing, supplied by d-cyphatrade. All data other than flat and peak quarterly pricing is implied.

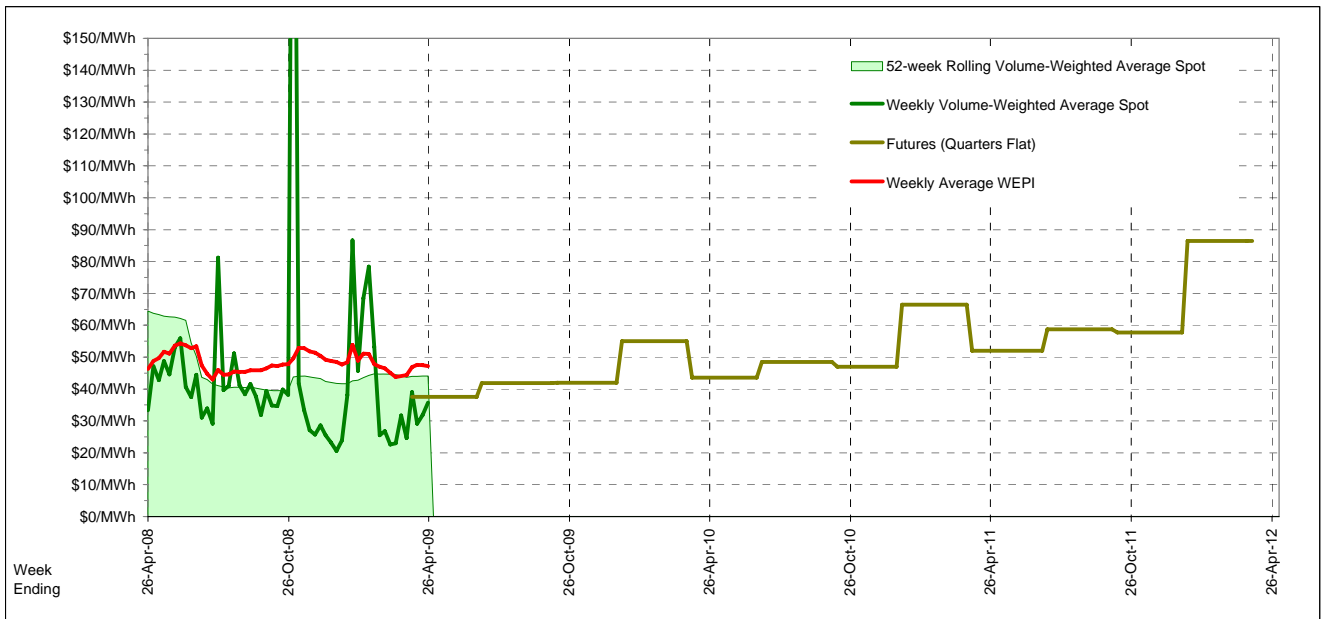
Futures settlement prices for flat load (all times)		CalYear	FinYear Ending	Q1	Q2	Q3	Q4
		2009			37.50	41.90	42.00
		2010	48.50	45.58	55.00	43.60	48.50
		2011	58.71	53.43	66.50	52.00	58.75
		2012	61.40	64.55	86.45		

Futures settlement prices for peak load (7am-10pm M-F)		CalYear	FinYear Ending	Q1	Q2	Q3	Q4
		2009			57.00	60.75	63.50
		2010	77.79	69.40	91.00	62.90	78.00
		2011	62.25	72.26	78.25	53.00	59.75
		2012	54.63	61.16	78.25		

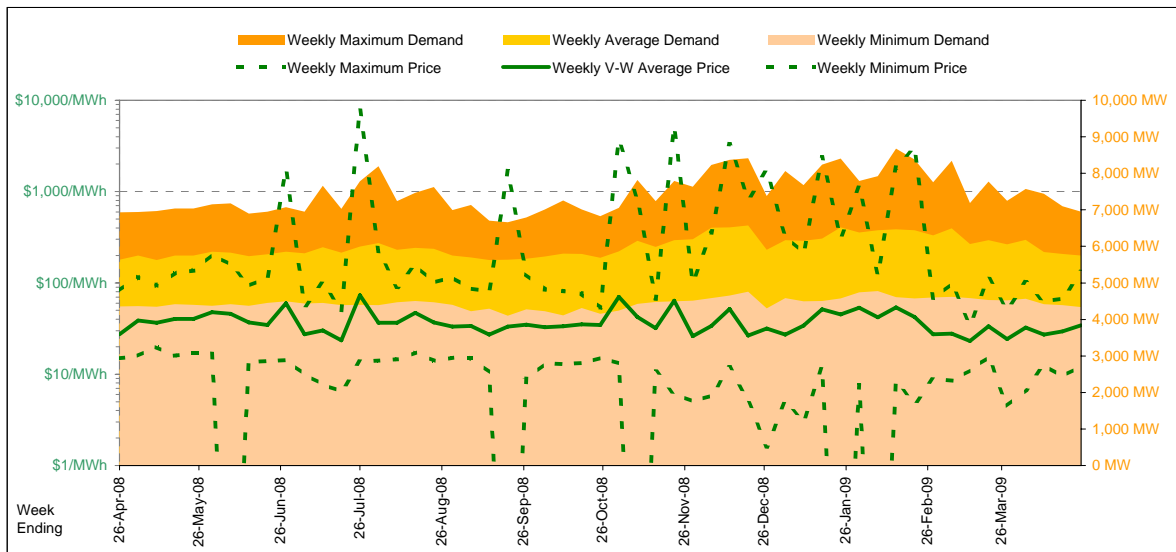
  

Implied Prices for Off-Peak Load (All other times)		CalYear	FinYear Ending	Q1	Q2	Q3	Q4
		2009			21.77	26.70	24.66
		2010	24.88	26.37	25.97	28.04	21.19
		2011	55.86	38.24	57.02	51.19	57.94
		2012	66.86	67.28	93.06		



Current Year

Energy (MWh)	Total	Week 17 Ending Saturday		52-Weeks Ending Sat		Date Occurred
		25-Apr-09	% change	26-Apr-08	25-Apr-09	
		965,585	2%	946,700	52,443,344	
Trading Demand (MW)	Maximum	6,950	0%	6,931	8,677	9-Feb-09
	Average	5,748	2%	5,635	6,003	
	Minimum	4,337	-0%	4,354	4,100	20-Sep-08
Regional Load Factor (%)		83%		81%	69%	
Trading Price (\$/MWh)	Maximum	131.01	60%	81.82	8058.07	
	Volume-Weighted Ave	34.33	25%	27.40	38.12	
	Time-Weighted Ave	32.74	23%	26.52	35.84	
	Minimum	12.08	-19%	14.95	-180.89	
Temperature °C (Brisbane)	Maximum	30.3	11%	27.4	36.1	
	Minimum	14.7	7%	13.8	3.7	

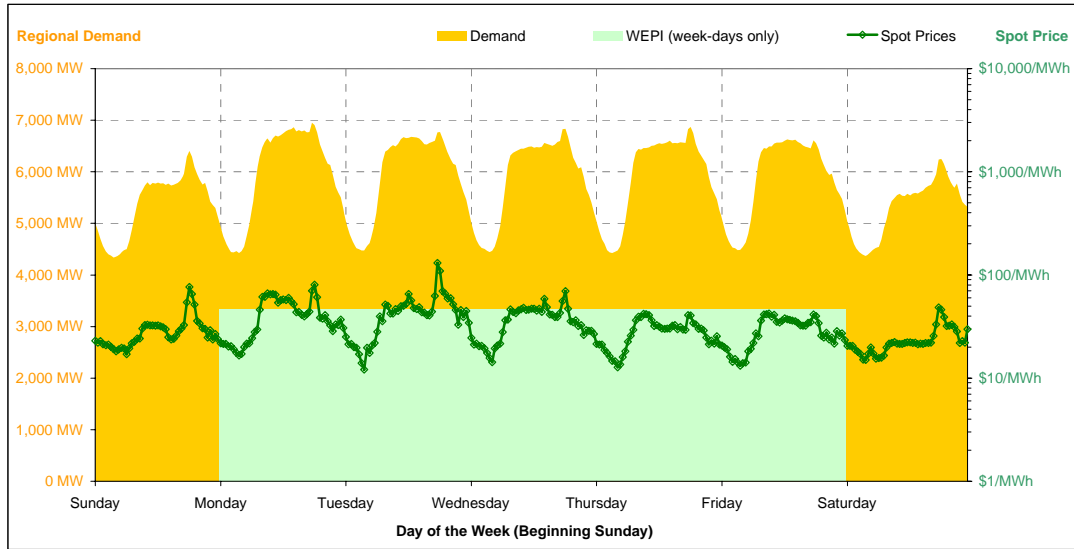


Note that prices below \$1/MWh have been reset to \$1/MWh for the purposes of this display

Current Week

All Data in this table is shown in MWh								
	Weekly Total	Sunday	Monday	Tuesday	Wednesday	Thursday	Friday	Saturday
<b>Total Production by Generation Company</b>								
AGL	25,729	0	4,030	4,792	4,635	4,602	4,741	2,930
Babcock & Brown Power	40,128	4,314	6,426	7,028	6,292	5,080	6,234	4,755
Braemar 2 Partnership	6,034	0	787	258	783	1,597	854	1,756
Callide Power Trading	59,107	8,482	8,641	8,417	8,645	8,367	8,298	8,258
CS Energy	231,789	31,921	35,103	34,615	34,082	32,800	33,869	29,401
Millmerran Energy Trader	144,021	20,774	20,672	20,716	20,447	20,608	20,428	20,378
Origin Energy	4,849	761	707	285	774	774	774	774
Stanwell	336,360	47,685	51,125	50,546	50,531	46,828	48,470	41,177
Tarong Energy	174,936	25,634	27,276	27,411	27,235	25,467	22,639	19,275
Tarong North Trader	28,566	0	0	0	0	7,311	10,624	10,632
Other QLD Plants	0	0	0	0	0	0	0	0
<b>Total internal production</b>	<b>1,051,519</b>	<b>139,570</b>	<b>154,766</b>	<b>154,066</b>	<b>153,423</b>	<b>153,432</b>	<b>156,929</b>	<b>139,334</b>
(Load at Pumped Storage)	-570	0	0	-164	0	0	0	-406
<b>Net internal production</b>	<b>1,050,949</b>	<b>139,570</b>	<b>154,766</b>	<b>153,902</b>	<b>153,423</b>	<b>153,432</b>	<b>156,929</b>	<b>138,928</b>
<b>Percentage each company's production represents of the total internal production</b>								
AGL	2.4%	0.0%	2.6%	3.1%	3.0%	3.0%	3.0%	2.1%
Babcock & Brown Power	3.8%	3.1%	4.2%	4.6%	4.1%	3.3%	4.0%	3.4%
Braemar 2 Partnership	0.6%	0.0%	0.5%	0.2%	0.5%	1.0%	0.5%	1.3%
Callide Power Trading	5.6%	6.1%	5.6%	5.5%	5.6%	5.5%	5.3%	5.9%
CS Energy	22.0%	22.9%	22.7%	22.5%	22.2%	21.4%	21.6%	21.1%
Millmerran Energy Trader	13.7%	14.9%	13.4%	13.4%	13.3%	13.4%	13.0%	14.6%
Origin Energy	0.5%	0.5%	0.5%	0.2%	0.5%	0.5%	0.5%	0.6%
Stanwell	32.0%	34.2%	33.0%	32.8%	32.9%	30.5%	30.9%	29.6%
Tarong Energy	16.6%	18.4%	17.6%	17.8%	17.8%	16.6%	14.4%	13.8%
Tarong North Trader	2.7%	0.0%	0.0%	0.0%	0.0%	4.8%	6.8%	7.6%
Other QLD Plants	0.0%	0.0%	0.0%	0.0%	0.0%	0.0%	0.0%	0.0%
<b>Total Percentage</b>	<b>100.0%</b>	<b>100.0%</b>	<b>100.0%</b>	<b>100.0%</b>	<b>100.0%</b>	<b>100.0%</b>	<b>100.0%</b>	<b>100.0%</b>

Current Week (continued)



	Sunday	Monday	Tuesday	Wednesday	Thursday	Friday	Saturday
<b>For the Current Week</b>							
Total Energy (MWh)	128,938	143,280	142,297	140,801	141,771	141,042	127,457
Trading Demand Target (MW)	Maximum	6,406	6,950	6,772	6,832	6,868	6,252
	Average	5,372	5,970	5,929	5,867	5,907	5,311
	Minimum	4,337	4,423	4,475	4,441	4,426	4,369
Regional Load Factor (%)	84%	86%	88%	86%	86%	89%	85%
Wholesale Electricity Price Index (WEPI)	N/A	46.75	46.81	46.51	46.48	46.30	N/A
	Maximum	76.74	80.49	131.01	69.73	42.09	48.58
	Volume-Weighted Ave	29.91	42.97	45.81	37.55	28.83	23.99
	Time-Weighted Ave	28.95	40.76	43.60	36.01	27.83	23.42
Trading Price (\$/MWh)	Minimum	17.08	16.52	12.08	14.24	13.21	14.98
	Maximum	27.2	27.3	26.4	27.2	26.9	30.3
	Minimum	16.7	18.6	17.9	16.5	17.0	15.8
<b>Percentage Change from Same Week Last Year</b>							
Total Energy (MWh)	2%	1%	0%	-0%	2%	12%	-1%
Trading Demand Target (MW)	Maximum	0%	0%	-2%	1%	4%	-1%
	Average	2%	1%	0%	-0%	2%	-1%
	Minimum	-0%	0%	1%	-1%	-0%	-0%
Wholesale Electricity Price Index (WEPI)	N/A	-7%	-7%	-7%	-7%	-4%	N/A
	Maximum	8%	34%	60%	69%	-0%	54%
	Volume-Weighted Ave	16%	41%	33%	27%	8%	14%
	Time-Weighted Ave	15%	38%	31%	24%	6%	13%
Trading Price (\$/MWh)	Minimum	7%	-8%	-29%	-28%	-36%	0%
	Maximum	9%	5%	1%	4%	0%	11%
	Minimum	6%	20%	25%	9%	16%	8%
<b>For the Same Week Last Year</b>							
Total Energy (MWh)	127,004	142,067	142,170	140,922	139,287	126,012	129,239
Trading Demand Target (MW)	Maximum	6,400	6,931	6,927	6,774	6,615	6,307
	Average	5,292	5,919	5,924	5,872	5,804	5,250
	Minimum	4,354	4,422	4,452	4,496	4,444	4,376
Regional Load Factor (%)	83%	85%	86%	87%	88%	85%	85%
Wholesale Electricity Price Index (WEPI)	N/A	50.38	50.27	49.94	49.76	48.16	N/A
	Maximum	70.74	59.90	81.82	41.32	42.21	31.55
	Volume-Weighted Ave	25.89	30.54	34.42	29.61	26.60	21.08
	Time-Weighted Ave	25.08	29.52	33.18	28.97	26.16	20.78
Trading Price (\$/MWh)	Minimum	15.91	18.01	17.05	19.65	19.81	14.95
	Maximum	25.0	25.9	26.1	26.2	26.8	27.4
	Minimum	15.8	15.5	14.3	15.1	14.6	13.8

Long-Term Trends

This table contains electricity futures pricing, supplied by d-cyphatrade. All data other than flat and peak quarterly pricing is implied.

Futures settlement prices for flat load (all times)		CalYear	FinYear Ending	Q1	Q2	Q3	Q4
		2009			33.85	34.65	43.60
		2010	46.37	43.80	61.40	35.85	48.75
		2011	56.40	50.34	70.50	42.75	52.00
		2012	62.14	62.84	89.00		60.50

Futures settlement prices for peak load (7am-10pm M-F)		CalYear	FinYear Ending	Q1	Q2	Q3	Q4
		2009			45.00	47.50	67.60
		2010	71.41	67.06	104.50	49.00	76.00
		2011	85.64	82.31	138.00	60.00	85.00
		2012	65.90	82.43	142.00		

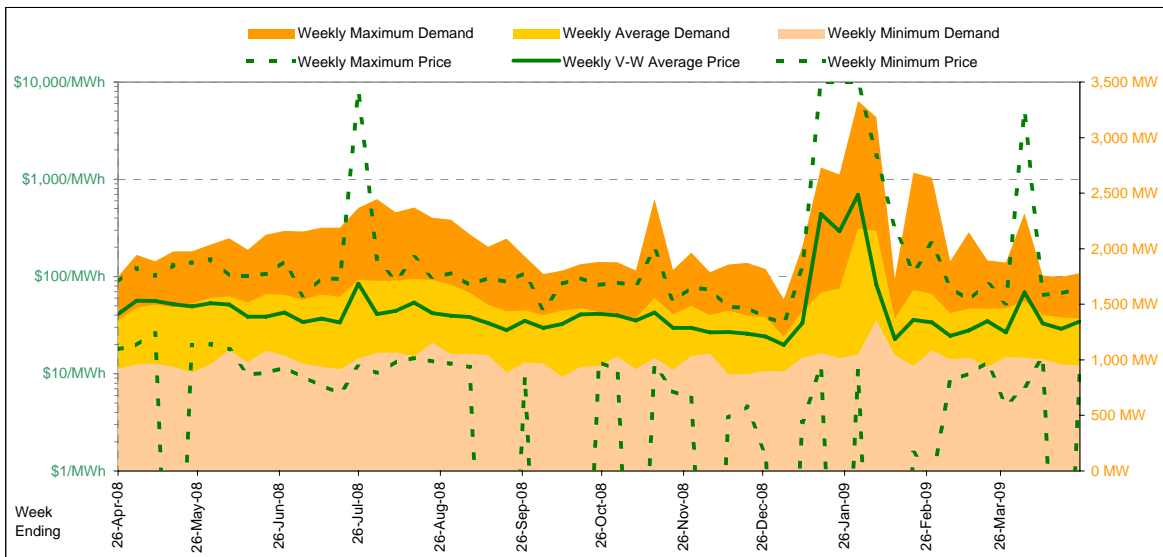
  

Implied Prices for Off-Peak Load (All other times)		CalYear	FinYear Ending	Q1	Q2	Q3	Q4
		2009			24.86	24.29	24.25
		2010	26.18	25.04	26.64	25.25	26.55
		2011	32.82	24.56	16.06	28.84	45.55
		2012	59.11	47.04	46.26		



Current Year

		Week 17 Ending Saturday			52-Weeks Ending Sat	
		25-Apr-09	% change	26-Apr-08	25-Apr-09	Date Occurred
Energy (MWh)	Total	230,593	1%	227,837	13,382,580	
	Maximum	1,779	2%	1,749	3,331	28-Jan-09
	Average	1,373	1%	1,356	1,532	
Trading Demand (MW)	Minimum	951	4%	918	847	11-Oct-08
	Regional Load Factor (%)	77%		78%	46%	
Trading Price (\$/MWh)	Maximum	75.23	-15%	88.25	9999.92	
	Volume-Weighted Ave	34.43	-16%	41.10	71.13	
	Time-Weighted Ave	32.81	-17%	39.63	53.21	
	Minimum	11.02	-38%	17.77	-1000.00	
Temperature °C (Adelaide)	Maximum	28.5	3%	27.7	45.7	
	Minimum	11.4	15%	9.9	0.7	

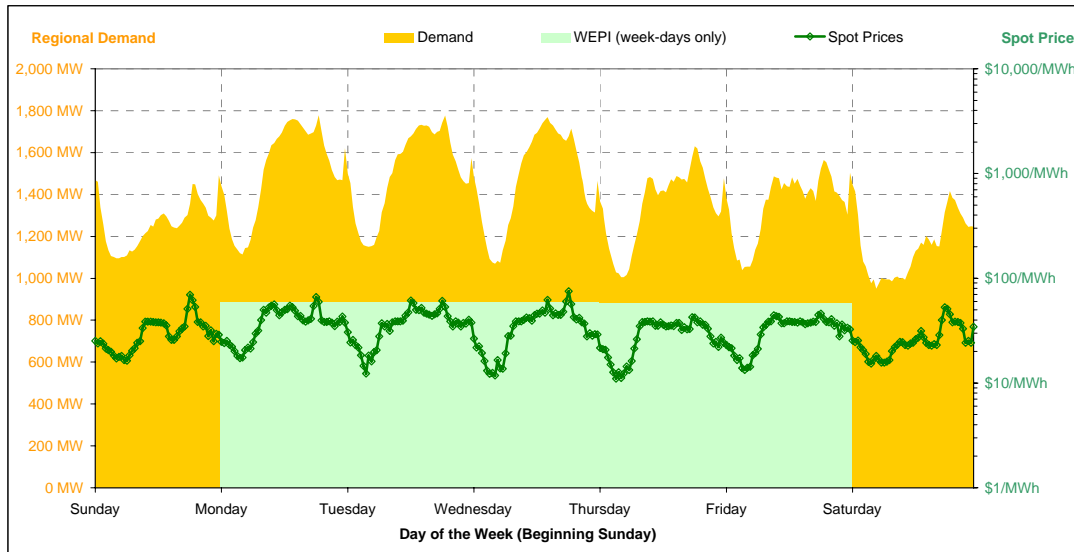


Note that prices below \$1/MWh have been reset to \$1/MWh for the purposes of this display

Current Week

All Data in this table is shown in MWh								
	Weekly Total	Sunday	Monday	Tuesday	Wednesday	Thursday	Friday	Saturday
<b>Total Production by Generation Company</b>								
AGL	55,163	3,992	9,305	10,123	9,447	7,405	8,582	6,311
International Power (Pelican Point)	41,286	5,142	9,239	10,206	8,616	4,841	3,242	0
International Power (Synergen)	0	0	0	0	0	0	0	0
Flinders Power	99,328	13,024	13,216	12,814	14,771	15,848	15,043	14,614
Origin Energy	6,630	1,129	2,294	1,658	767	0	783	0
Osborne	24,734	3,497	3,648	3,644	3,550	3,488	3,551	3,358
TRUenergy	4	0	3	0	0	0	2	0
Other SA Plants	9,163	1,041	284	895	1,083	1,973	1,936	1,953
<b>Total internal production</b>	<b>236,307</b>	<b>27,823</b>	<b>37,987</b>	<b>39,340</b>	<b>38,233</b>	<b>33,554</b>	<b>33,137</b>	<b>26,235</b>
(Load at Pumped Storage)	0	0	0	0	0	0	0	0
<b>Net internal production</b>	<b>236,307</b>	<b>27,823</b>	<b>37,987</b>	<b>39,340</b>	<b>38,233</b>	<b>33,554</b>	<b>33,137</b>	<b>26,235</b>
<b>Percentage each company's production represents of the total internal production</b>								
AGL	23.3%	14.3%	24.5%	25.7%	24.7%	22.1%	25.9%	24.1%
International Power (Pelican Point)	17.5%	18.5%	24.3%	25.9%	22.5%	14.4%	9.8%	0.0%
International Power (Synergen)	0.0%	0.0%	0.0%	0.0%	0.0%	0.0%	0.0%	0.0%
Flinders Power	42.0%	46.8%	34.8%	32.6%	38.6%	47.2%	45.4%	55.7%
Origin Energy	2.8%	4.1%	6.0%	4.2%	2.0%	0.0%	2.4%	0.0%
Osborne	10.5%	12.6%	9.6%	9.3%	9.3%	10.4%	10.7%	12.8%
TRUenergy	0.0%	0.0%	0.0%	0.0%	0.0%	0.0%	0.0%	0.0%
Other SA Plants	3.9%	3.7%	0.7%	2.3%	2.8%	5.9%	5.8%	7.4%
<b>Total Percentage</b>	<b>100.0%</b>	<b>100.0%</b>	<b>100.0%</b>	<b>100.0%</b>	<b>100.0%</b>	<b>100.0%</b>	<b>100.0%</b>	<b>100.0%</b>

Current Week (continued)



	Sunday	Monday	Tuesday	Wednesday	Thursday	Friday	Saturday
<b>For the Current Week</b>							
Total Energy (MWh)	30,190	36,314	36,194	35,286	32,320	32,465	27,825
Trading Demand Target (MW)	Maximum	1,491	1,779	1,777	1,770	1,630	1,455
	Average	1,258	1,513	1,508	1,470	1,347	1,159
	Minimum	1,095	1,114	1,150	1,069	1,006	951
Regional Load Factor (%)	84%	85%	85%	83%	83%	86%	80%
Wholesale Electricity Price Index (WEPI)	N/A	58.68	58.67	58.61	58.07	58.15	N/A
	Maximum	69.67	66.39	61.31	75.23	42.44	45.97
	Volume-Weighted Ave	31.40	40.21	38.74	37.44	29.95	33.35
Trading Price (\$/MWh)	Time-Weighted Ave	30.80	38.63	37.27	35.44	28.80	32.36
	Minimum	16.36	17.25	12.33	11.82	11.02	13.35
	Maximum	22.9	26.1	27.4	28.5	22.2	17.8
Temperature °C (Adelaide)	Maximum	22.9	26.1	27.4	28.5	22.2	17.8
	Minimum	12.1	11.4	14.8	14.5	21.3	13.1
<b>Percentage Change from Same Week Last Year</b>							
Total Energy (MWh)	6%	6%	5%	-2%	-11%	12%	-4%
Trading Demand Target (MW)	Maximum	6%	5%	5%	1%	-6%	-6%
	Average	6%	6%	5%	-2%	-11%	-4%
	Minimum	19%	6%	13%	-1%	-13%	2%
Wholesale Electricity Price Index (WEPI)	N/A	-14%	-15%	-15%	-15%	-11%	N/A
	Maximum	-18%	-24%	-31%	29%	-26%	-14%
	Volume-Weighted Ave	-16%	-17%	-18%	-16%	-25%	1%
Trading Price (\$/MWh)	Time-Weighted Ave	-15%	-18%	-19%	-19%	-27%	-0%
	Minimum	-25%	-37%	-48%	-55%	-60%	-14%
	Maximum	-15%	3%	10%	8%	-20%	-11%
Temperature °C (Adelaide)	Maximum	-15%	3%	10%	8%	-20%	-11%
	Minimum	-34%	-14%	18%	39%	115%	-11%
<b>For the Same Week Last Year</b>							
Total Energy (MWh)	28,484	34,334	34,583	36,128	36,271	28,969	29,070
Trading Demand Target (MW)	Maximum	1,408	1,693	1,691	1,749	1,738	1,482
	Average	1,187	1,431	1,441	1,505	1,511	1,207
	Minimum	918	1,054	1,020	1,083	1,150	1,022
Regional Load Factor (%)	84%	84%	85%	86%	87%	81%	78%
Wholesale Electricity Price Index (WEPI)	N/A	68.58	68.93	69.28	68.59	65.09	N/A
	Maximum	85.15	86.99	88.25	58.12	57.60	57.41
	Volume-Weighted Ave	37.45	48.71	47.37	44.75	40.19	33.02
Trading Price (\$/MWh)	Time-Weighted Ave	36.39	47.26	46.03	43.75	39.63	32.46
	Minimum	21.92	27.32	23.61	26.38	27.88	20.62
	Maximum	26.8	25.3	24.9	26.5	27.7	19.9
Temperature °C (Adelaide)	Maximum	26.8	25.3	24.9	26.5	27.7	19.9
	Minimum	18.2	13.3	12.5	10.4	9.9	14.7

Long-Term Trends

This table contains electricity futures pricing, supplied by d-cyphatrade. All data other than flat and peak quarterly pricing is implied.

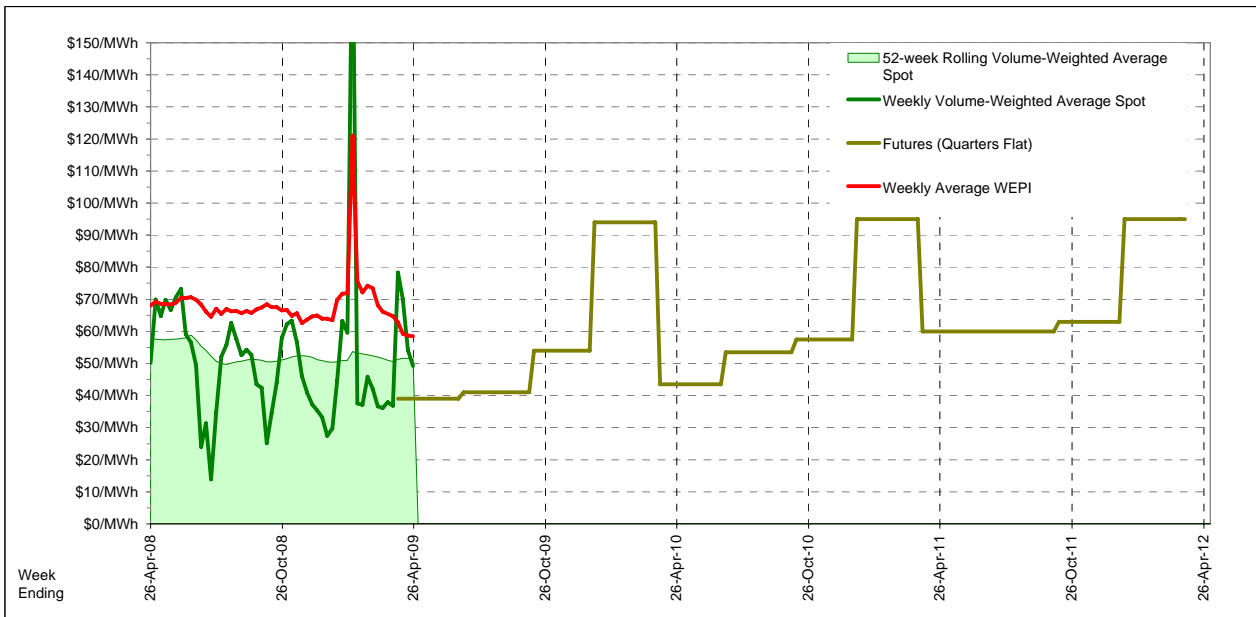
<i>Futures settlement prices</i> for flat load (all times)	CalYear	FinYear Ending	Q1	Q2	Q3	Q4
	2009			39.00	41.00	54.00
	2010	61.99	57.98	94.00	43.55	53.45
	2011	69.39	66.34	95.00	60.00	63.00
	2012	69.46	69.46	95.00		

<i>Futures settlement prices</i> for peak load (7am-10pm M-F)	CalYear	FinYear Ending	Q1	Q2	Q3	Q4
	2009			54.00	50.70	86.50
	2010	78.02	75.30	102.00	63.00	73.00
	2011	66.67	76.90	100.00	61.00	61.00
	2012	56.06	60.85	100.00		

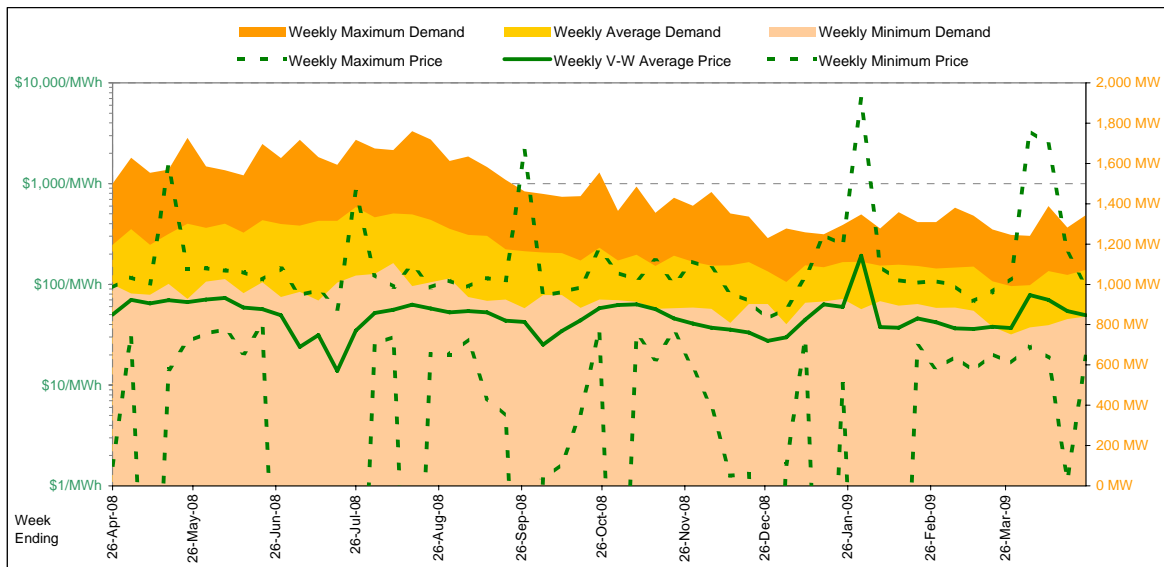
  

<i>Implied Prices</i> for Off-Peak Load (All other times)	CalYear	FinYear Ending	Q1	Q2	Q3	Q4
	2009			26.90	33.18	27.79
	2010	49.06	44.01	87.55	27.86	37.68
	2011	71.58	57.82	90.97	59.19	77.11
	2012	80.27	76.40	90.97		



Current Year

		Week 17 Ending Saturday			52-Weeks Ending Sat	
		25-Apr-09	% change	26-Apr-08	25-Apr-09	Date Occurred
Energy (MWh)	Total	180,204	-10%	200,948	10,241,642	
	Maximum	1,344	-10%	1,500	1,760	11-Aug-08
	Average	1,073	-10%	1,196	1,172	
Trading Demand (MW)	Minimum	841	-16%	999	751	22-Mar-09
	Regional Load Factor (%)	80%		80%	67%	
Trading Price (\$/MWh)	Maximum	98.42	7%	92.41	6880.22	
	Volume-Weighted Ave	49.20	-2%	50.22	51.51	
	Time-Weighted Ave	48.85	-2%	49.66	50.24	
	Minimum	19.04	1,083%	1.61	-999.76	
Temperature °C (Hobart)	Maximum	20.9	-2%	21.4	33.5	
	Minimum	6.1	7%	5.7	0.3	



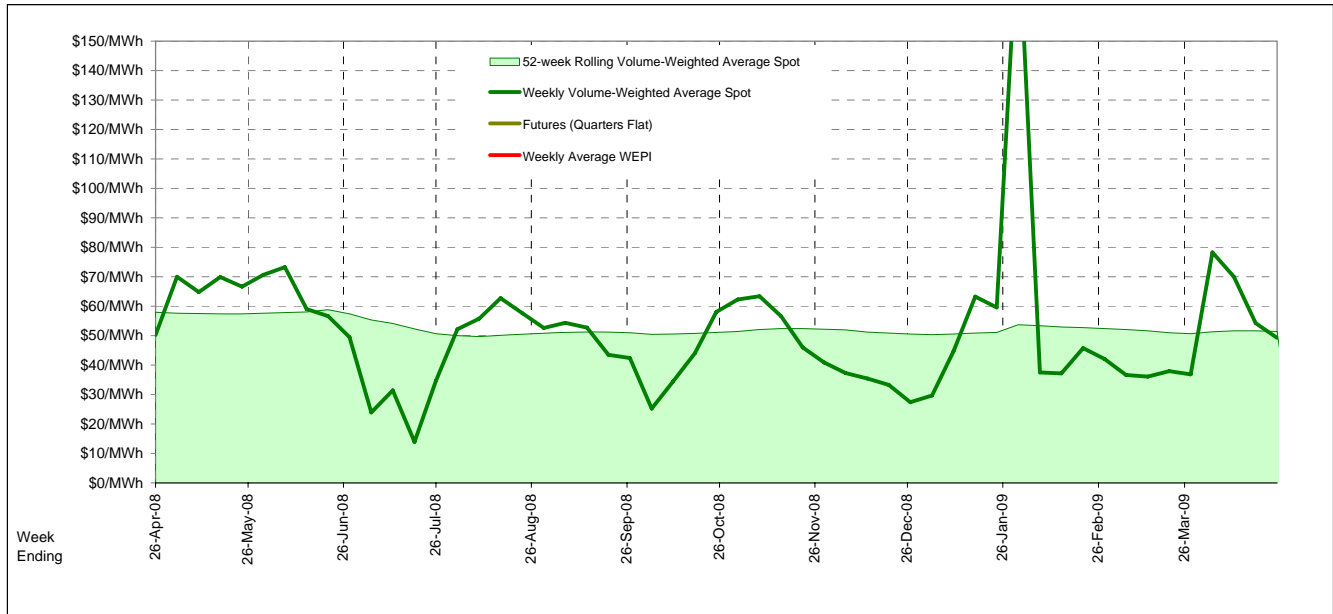
Note that prices below \$1/MWh have been reset to \$1/MWh for the purposes of this display

Current Week

All Data in this table is shown in MWh								
Weekly Total	Sunday	Monday	Tuesday	Wednesday	Thursday	Friday	Saturday	
<b>Total Production by Generation Company</b>								
Aurora Energy	555	0	28	85	10	244	157	33
Hydro Tasmania	122,214	16,288	19,247	18,489	17,407	17,404	16,916	16,465
Bell Bay Power	0	0	0	0	0	0	0	0
Other TAS Plants	0	0	0	0	0	0	0	0
<b>Total internal production</b>	<b>122,769</b>	<b>16,288</b>	<b>19,275</b>	<b>18,574</b>	<b>17,417</b>	<b>17,648</b>	<b>17,072</b>	<b>16,497</b>
(Load at Pumped Storage)	0	0	0	0	0	0	0	0
<b>Net internal production</b>	<b>122,769</b>	<b>16,288</b>	<b>19,275</b>	<b>18,574</b>	<b>17,417</b>	<b>17,648</b>	<b>17,072</b>	<b>16,497</b>
<b>Percentage each company's production represents of the total internal production</b>								
Aurora Energy	0.5%	0.0%	0.1%	0.5%	0.1%	1.4%	0.9%	0.2%
Hydro Tasmania	99.5%	100.0%	99.9%	99.5%	99.9%	98.6%	99.1%	99.8%
Bell Bay Power	0.0%	0.0%	0.0%	0.0%	0.0%	0.0%	0.0%	0.0%
Other TAS Plants	0.0%	0.0%	0.0%	0.0%	0.0%	0.0%	0.0%	0.0%
<b>Total Percentage</b>	<b>100.0%</b>	<b>100.0%</b>	<b>100.0%</b>	<b>100.0%</b>	<b>100.0%</b>	<b>100.0%</b>	<b>100.0%</b>	<b>100.0%</b>

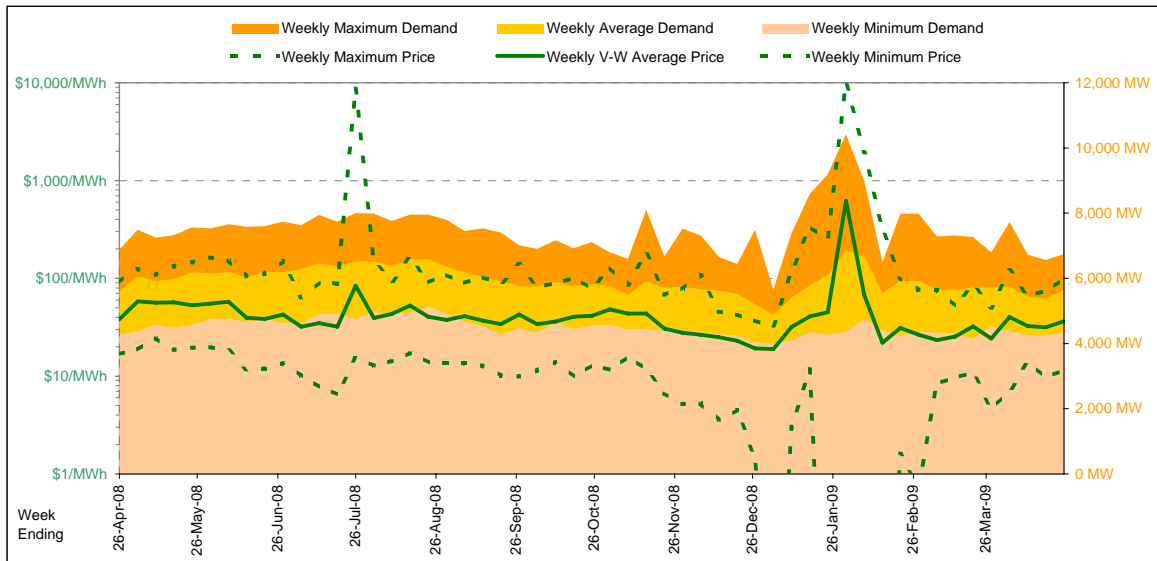


Long-Term Trends



Current Year

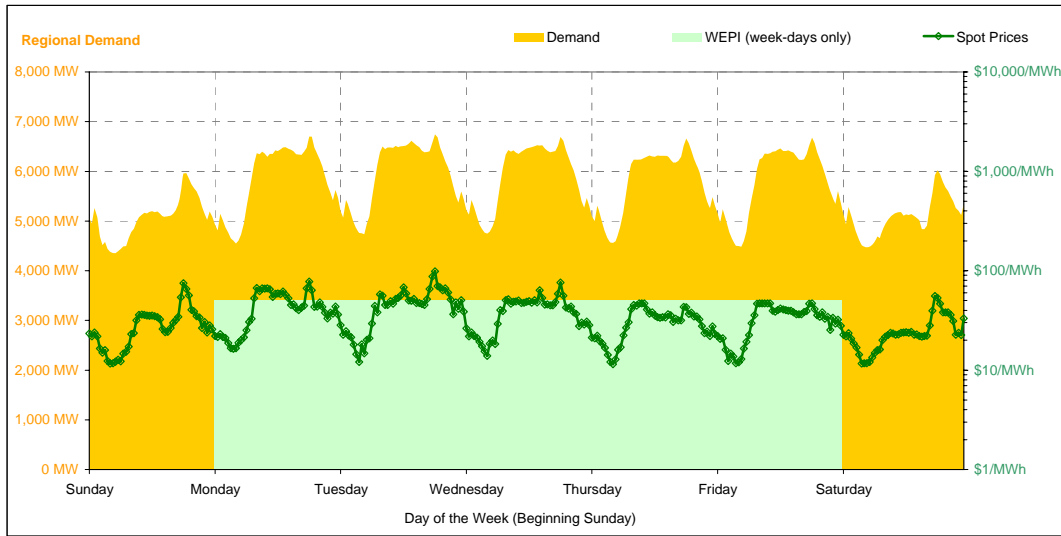
		Week 17 Ending Saturday		52-Weeks Ending Sat		Date Occurred
		25-Apr-09	% change	26-Apr-08	25-Apr-09	
Energy (MWh)	Total	946,700	0%	942,048	51,863,011	
	Maximum	6,747	-2%	6,888	10,415	29-Jan-09
	Average	5,635	0%	5,607	5,937	
Trading Demand (MW)	Maximum	4,353	2%	4,275	4,004	28-Dec-08
	Minimum	84%		81%	57%	
Regional Load Factor (%)						
Trading Price (\$/MWh)	Maximum	98.83	8%	91.68	10000.00	
	Volume-Weighted Ave	36.41	-5%	38.25	52.18	
	Time-Weighted Ave	34.76	-6%	37.09	44.73	
	Minimum	11.46	-32%	16.92	-496.71	
Temperature °C (Melbourne)	Maximum	25.1	-2%	25.6	46.4	
	Minimum	8.7	1%	8.6	2.2	



Current Week

All Data in this table is shown in MWh								
	Weekly Total	Sunday	Monday	Tuesday	Wednesday	Thursday	Friday	Saturday
<b>Total Production by Generation Company</b>								
AGL	5,355	260	1,814	1,005	1,561	200	153	363
Anglesea	24,888	3,833	3,840	3,716	3,703	3,346	3,638	2,812
Babcock & Brown Power	1,335	60	587	551	35	35	35	35
Ecogen Energy	11,093	0	2,250	1,861	931	2,013	3,791	248
Energy Brix	23,789	3,652	2,778	3,478	3,495	3,254	3,557	3,577
International Power (Hazelwood)	228,748	32,717	32,907	33,384	33,066	33,297	32,966	30,412
Loy Yang B	176,291	25,192	25,200	25,193	25,199	25,116	25,197	25,195
Loy Yang Power	276,994	39,425	39,908	39,602	39,775	39,579	39,652	39,054
Snowy Hydro	38,799	935	8,339	8,157	8,442	5,940	6,521	466
TRUenergy	243,254	35,181	35,124	34,659	34,712	35,033	33,539	35,007
Other VIC Plants	0	0	0	0	0	0	0	0
<b>Total internal production</b>	<b>1,030,543</b>	<b>141,254</b>	<b>152,745</b>	<b>151,603</b>	<b>150,918</b>	<b>147,812</b>	<b>149,046</b>	<b>137,167</b>
(Load at Pumped Storage)	0	0	0	0	0	0	0	0
<b>Net internal production</b>	<b>1,030,543</b>	<b>141,254</b>	<b>152,745</b>	<b>151,603</b>	<b>150,918</b>	<b>147,812</b>	<b>149,046</b>	<b>137,167</b>
<b>Percentage each company's production represents of the total internal production</b>								
AGL	0.5%	0.2%	1.2%	0.7%	1.0%	0.1%	0.1%	0.3%
Anglesea	2.4%	2.7%	2.5%	2.5%	2.5%	2.3%	2.4%	2.1%
Babcock & Brown Power	0.1%	0.0%	0.4%	0.4%	0.0%	0.0%	0.0%	0.0%
Ecogen Energy	1.1%	0.0%	1.5%	1.2%	0.6%	1.4%	2.5%	0.2%
Energy Brix	2.3%	2.6%	1.8%	2.3%	2.3%	2.2%	2.4%	2.6%
International Power (Hazelwood)	22.2%	23.2%	21.5%	22.0%	21.9%	22.5%	22.1%	22.2%
Loy Yang B	17.1%	17.8%	16.5%	16.6%	16.7%	17.0%	16.9%	18.4%
Loy Yang Power	26.9%	27.9%	26.1%	26.1%	26.4%	26.8%	26.6%	28.5%
Snowy Hydro	3.8%	0.7%	5.5%	5.4%	5.6%	4.0%	4.4%	0.3%
TRUenergy	23.6%	24.9%	23.0%	22.9%	23.0%	23.7%	22.5%	25.5%
Other VIC Plants	0.0%	0.0%	0.0%	0.0%	0.0%	0.0%	0.0%	0.0%
<b>Total Percentage</b>	<b>100.0%</b>	<b>100.0%</b>	<b>100.0%</b>	<b>100.0%</b>	<b>100.0%</b>	<b>100.0%</b>	<b>100.0%</b>	<b>100.0%</b>

Current Week (continued)



	Sunday	Monday	Tuesday	Wednesday	Thursday	Friday	Saturday
<b>For the Current Week</b>							
Total Energy (MWh)	121,413	140,325	142,956	141,853	138,755	139,017	122,382
Trading Demand Target (MW)	Maximum	5,965	6,701	6,747	6,694	6,661	6,021
	Average	5,059	5,847	5,957	5,911	5,781	5,099
	Minimum	4,353	4,550	4,733	4,747	4,559	4,470
Regional Load Factor (%)	85%	87%	88%	88%	87%	87%	85%
Wholesale Electricity Price Index (WEPI)	N/A	50.61	50.93	50.51	50.10	50.44	N/A
	Maximum	74.75	77.48	98.83	75.98	46.97	55.68
	Volume-Weighted Ave	29.82	44.47	47.05	40.35	31.23	33.87
Trading Price (\$/MWh)	Time-Weighted Ave	28.81	42.65	45.33	38.91	30.22	32.62
	Minimum	11.66	16.41	12.11	13.87	11.46	11.61
	Maximum	19.1	22.0	24.6	25.1	22.8	18.2
Temperature °C (Melbourne)	14.0	8.7	9.4	9.8	11.3	15.1	12.3
<b>Percentage Change from Same Week Last Year</b>							
Total Energy (MWh)	-1%	-1%	-1%	-2%	-3%	13%	-1%
Trading Demand Target (MW)	Maximum	-1%	-3%	-1%	-1%	1%	12%
	Average	-1%	-1%	-1%	-2%	-3%	13%
	Minimum	0%	-1%	-1%	0%	-4%	2%
Wholesale Electricity Price Index (WEPI)	N/A	-0%	-0%	-0%	-1%	4%	N/A
Trading Price (\$/MWh)	Maximum	-10%	-12%	8%	43%	-14%	-20%
	Volume-Weighted Ave	-15%	-4%	3%	-0%	-14%	10%
	Time-Weighted Ave	-16%	-5%	1%	-2%	-16%	8%
Temperature °C (Melbourne)	Maximum	-42%	-30%	-44%	-43%	-55%	-39%
	Minimum	-15%	18%	26%	22%	-9%	-29%
	Minimum	40%	-24%	-14%	-12%	31%	34%
<b>For the Same Week Last Year</b>							
Total Energy (MWh)	122,240	142,190	144,111	144,104	142,586	123,011	123,808
Trading Demand Target (MW)	Maximum	6,019	6,888	6,836	6,770	6,616	5,952
	Average	5,093	5,925	6,005	6,004	5,941	5,125
	Minimum	4,332	4,577	4,767	4,727	4,769	4,405
Regional Load Factor (%)	85%	86%	88%	89%	90%	86%	84%
Wholesale Electricity Price Index (WEPI)	N/A	50.82	51.08	50.69	50.53	48.29	N/A
	Maximum	83.41	88.18	91.68	53.12	54.73	58.44
	Volume-Weighted Ave	34.97	46.11	45.81	40.53	36.18	30.79
Trading Price (\$/MWh)	Time-Weighted Ave	34.14	44.70	44.68	39.88	35.76	30.33
	Minimum	19.97	23.44	21.76	24.42	25.48	19.02
	Maximum	22.6	18.6	19.5	20.5	25.0	25.6
Temperature °C (Melbourne)	10.0	11.5	10.9	11.1	8.6	11.3	12.0

Long-Term Trends

This table contains electricity futures pricing, supplied by d-cyphatrade. All data other than flat and peak quarterly pricing is implied.

		CalYear	FinYear Ending	Q1	Q2	Q3	Q4
<b>Actual Prices for Flat Load (All Times)</b>	2009				38.75	41.00	39.75
	2010	51.73	48.67	70.75	43.60	47.00	45.90
	2011	61.38	56.19	80.90	51.45	56.50	57.00
	2012	69.00	66.99	96.15			
<b>Actual Prices for Peak Load (7am-10pm M-F)</b>	2009				56.25	57.50	57.50
	2010	76.69	73.88	123.00	59.65	62.00	64.00
	2011	77.57	78.40	139.20	50.20	57.20	65.55
	2012	79.08	79.05	144.20			
<b>Implied Prices for Off-Peak Load (All other times)</b>	2009				24.64	27.69	25.44
	2010	31.60	28.34	28.61	30.66	34.90	31.30
	2011	48.32	38.28	33.88	52.46	55.94	50.10
	2012	60.87	57.26	57.40			

