

## Power purchase costs increase in New South Wales

The New South Wales Independent Pricing and Regulatory Tribunal, responsible for setting the regulated retail electricity tariffs charged by retailers in NSW to small retail customers on standard contracts, has released its final report for 2009-10 of the electricity purchase allowance that is included in regulated electricity prices for the state. This follows a draft report released in March 2009.

The report finds that the costs of purchasing electricity have increased over the amount allowed in the 2007 determination by 14 per cent for EnergyAustralia, 15 per cent for Integral Energy and 16 per cent for Country Energy.

In June 2007 IPART made a determination of retail electricity prices for residential customers and small businesses who have decided not to be supplied under a contract in the competitive market. Under the 2007 determination standard retailers are able to increase regulated electricity prices each year to account for increases in network charges to fund improvements in network reliability, increased electricity purchase and retail operating costs and, increased retail margins.

"IPART has concluded that wholesale purchase costs have increased substantially and that the allowance for electricity purchase costs should increase to reflect this. If the electricity cost allowance is insufficient some retailers may be unwilling to supply customers and incentives to invest in new generation capacity when it is needed may be inadequate," says IPART Chairman Dr Michael Keating.

As a result of the increase in the electricity purchase allowance alone, retail prices will increase by six per cent for EnergyAustralia and Integral Energy and five per cent for Country Energy.

In addition, IPART's retail determination requires retailers to pass on to regulated customers the network price increases that are determined by the Australian Energy Regulator. The AER has recently issued a final determination that provides for substantial increases in network prices. As a result of the network price increases alone, regulated retail prices will increase by 10.4 per cent for EnergyAustralia, 9.3 per cent for Integral Energy and 9.8 per cent for Country Energy.

These two amounts, together with the other retail components allowed for in IPART's 2007 determination and inflation, will result in increased electricity prices. A typical residential customer of EnergyAustralia, Integral Energy and Country Energy on regulated tariffs can expect to pay around \$3.53, \$3.89 and \$3.92 more per week respectively for electricity from 1 July 2009. This represents an increase of around 21.7 per cent, 21.1 per cent and 17.9 per cent for regulated residential customers of EnergyAustralia, Integral Energy and Country Energy respectively.

IPART says the price increases have the potential to significantly impact on households, especially low-income households.

### This week's volume-weighted electricity price (\$/MWh)

NSW:	\$30.81
Vic:	\$30.87
Qld:	\$28.80
SA:	\$31.41
Tas:	\$40.04



























## Calendar of Events

### 25 May and 26 June 2009

esaa is holding a series of **member briefings** to inform both full and associate members about esaa's work program and promote discussion on policy issues affecting Australia's energy industry. The briefing sessions will be held in PricewaterhouseCoopers offices in **Brisbane** on 25 May 2009 and in Hydro Tasmania's offices in **Hobart** on 26 June.

There is no cost to attend, however, members are required to register on-line. Register for the Brisbane briefing at [www.pwc.com/au/esaamemberbriefing](http://www.pwc.com/au/esaamemberbriefing) or at <https://share.acrobat.com/adc/document.do?docid=22f832ae-8d11-4b33-9dee-d1c579a91622> for the Hobart briefing.

### 27 July to 4 August

Between 27 July and 4 August, **Alstom** are presenting their biennial '**Clean Power Today!**<sup>TM</sup>' **Roadshow**. The shows will run from 8.30 am to 3.00 pm and take place in **Sydney (27 July)**, **Melbourne (29 July)**, **Brisbane (31 July)** and **Auckland (4 August)**. The format follows a morning of strategic presentations from international Alstom speakers, and an afternoon of technology roundtables with Alstom's technology specialists.

Presentation topics include:

- The Global, Asian and Australian Policy Environment
- How to Stabilise CO<sub>2</sub> emissions by 2030
- The Role of Carbon Capture and Storage
- Meeting the MRET: The Role of Wind
- Helping Today's Power Plants Meet Tomorrow's Challenges
- Smart Power Technologies – Energy Management.

Participation is by invitation only, but if you would like more information please send an email to [aunz.communications@power.alstom.com](mailto:aunz.communications@power.alstom.com) stating your name, job title, organisation and contact details and an Alstom representative will get back to you.

## Jobs on Offer

### List industry jobs

esaa Full Members are invited to submit industry-related employment opportunities. This is a complimentary service. Email notices to [newseditor@esaa.com.au](mailto:newseditor@esaa.com.au) by close of business Thursday.

### Energy Policy Adviser

An opportunity exists for an **Energy Policy Adviser** to support the development of esaa's energy policy and advocacy work.

The **Energy Policy Adviser** reports to the Policy Development Manager and is responsible for researching and analysing policy developments and providing advice on a range of energy policy issues. The position requires the preparation of high level briefing papers and submissions. The successful candidate must have the capacity for expert analysis of energy markets. The ability to work with representatives of all levels of business and government is also necessary. Located in the Melbourne CBD, the role requires sound oral

and written communication skills. Applicants should be tertiary educated, preferably in economics, law or engineering, or with directly relevant experience. Salary will be negotiated based on experience.

Interested applicants should contact Nicholas Wilson on 03 9670 0188 for a detailed position description. Written applications should address the key aspects of the position description. Applications should be lodged at [recruitment@esaa.com.au](mailto:recruitment@esaa.com.au).

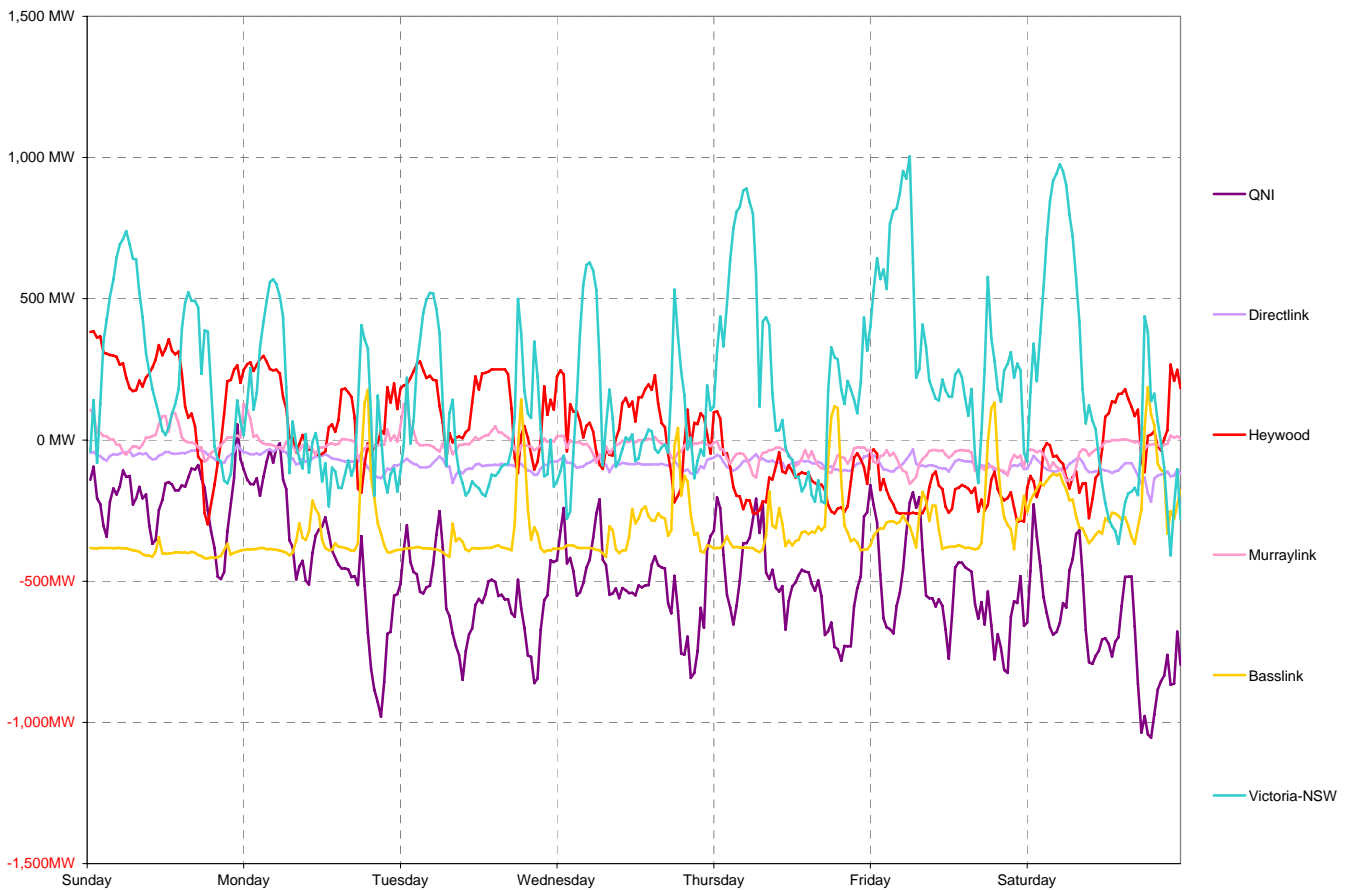
# National Electricity Market Report

Week 20 Ending Saturday 16-May-09

## Daily Inter-Regional Energy Flow

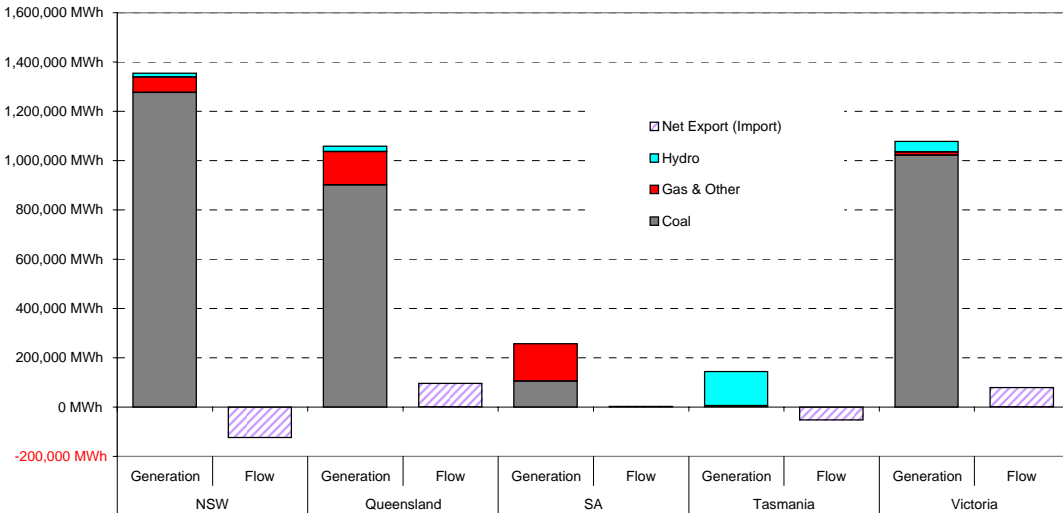
	Daily Net Exports (or Imports)							Weekly Total
	Sunday	Monday	Tuesday	Wednesday	Thursday	Friday	Saturday	
<b>For the Current Week</b>								
NSW	-12,656	-13,188	-17,320	-16,466	-19,780	-23,370	-22,506	-125,285
Queensland	6,229	11,507	15,845	14,283	13,898	15,173	18,840	95,774
South Australia	-4,606	-1,799	-2,933	-676	4,968	6,637	1,000	2,591
Tasmania	-9,498	-7,934	-8,364	-7,617	-7,447	-6,773	-5,024	-52,654
Victoria	20,531	11,413	12,771	10,475	8,361	8,333	7,690	79,574
<b>MWh Change from Same Week Last Year</b>								
NSW	1,775	13,792	21,190	4,944	-2,787	-10,461	-15,619	12,835
Queensland	-16,519	-12,694	-10,093	-8,766	-6,661	-3,832	-478	-59,042
South Australia	-2,998	-1,503	-2,985	-2,497	-1,219	-912	-5,535	-17,648
Tasmania	678	1,425	-3,388	-15	1,726	1,946	2,275	4,646
Victoria	17,999	16,848	18,575	20,076	20,807	27,978	23,302	145,584
<b>For the Same Week Last Year</b>								
NSW	-14,431	-26,980	-38,510	-21,410	-16,994	-12,909	-6,888	-138,120
Queensland	22,748	24,201	25,938	23,049	20,559	19,005	19,318	154,816
South Australia	-1,608	-296	52	1,821	6,187	7,548	6,534	20,239
Tasmania	-10,175	-9,358	-4,976	-7,602	-9,173	-8,718	-7,298	-57,299
Victoria	2,532	-5,435	-5,804	-9,601	-12,446	-19,646	-15,612	-66,011

## Interconnector energy flow throughout the week

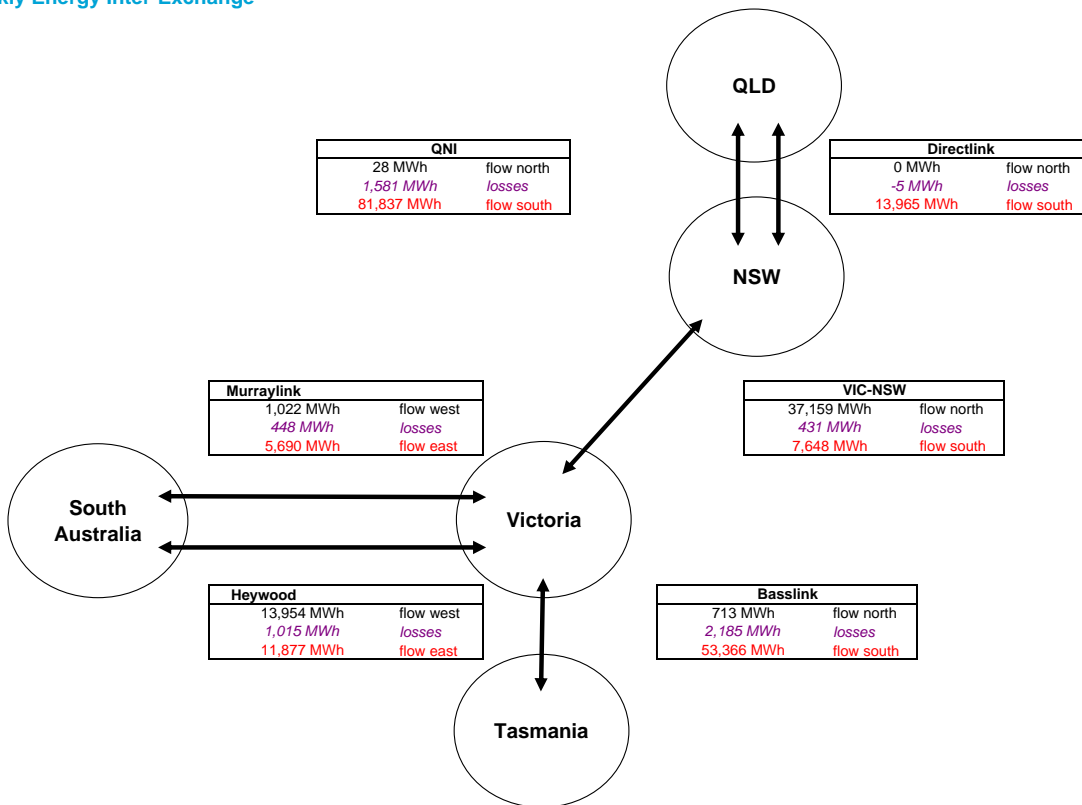


### Generation by Fuel Type

	All data in this table is shown in MWh for the week											
	NSW		Queensland		SA		Tasmania		Victoria		Whole of NEM	
	Generation	Flow	Generation	Flow	Generation	Flow	Generation	Flow	Generation	Flow	Generation	Flow
Coal	1,276,243		901,008		105,558		0		1,022,285		3,305,093	
Gas & Other	62,615		135,963		152,095		5,490		12,927		369,089	
Hydro	15,338		21,363		0		138,692		43,107		218,500	
Pump Storage	0		-3,059		0		0		0		-3,059	
<b>Total Generation</b>	<b>1,354,196</b>		<b>1,055,274</b>		<b>257,652</b>		<b>144,182</b>		<b>1,078,319</b>		<b>3,889,622</b>	
Total Exports		7,675		95,802		17,567		713		105,500		
Total Imports		132,960		28		14,976		53,366		25,927		
<b>Net Export (Import)</b>		<b>-125,285</b>		<b>95,774</b>		<b>2,591</b>		<b>-52,654</b>		<b>79,574</b>		
Net Consumption	1,479,481		959,500		255,061		196,836		998,745			

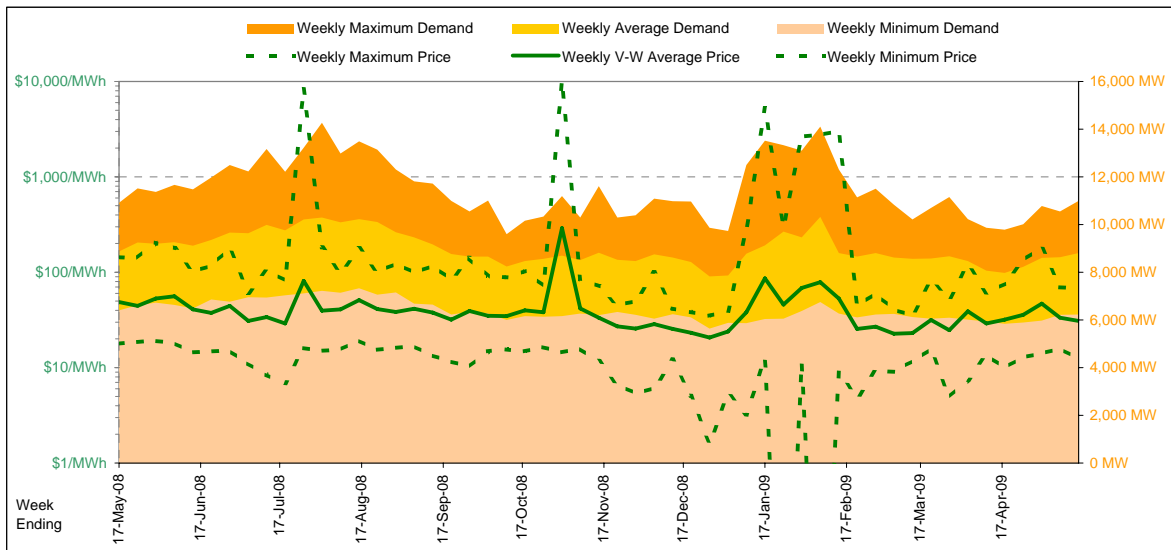


### Weekly Energy Inter-Exchange



Current Year

Energy (MWh)	Total	Week 20 Ending Saturday		52-weeks ending Sat		Date Occurred
		16-May-09	% change	17-May-08	16-May-09	
		1,478,319	-1%	1,491,673	78,492,342	
Trading Demand (MW)	Maximum	10,998	1%	10,907	14,274	28-Aug-08
	Average	8,800	-1%	8,879	8,985	
	Minimum	6,229	-3%	6,403	5,632	26-Dec-08
Regional Load Factor (%)		80%		81%	63%	
Trading Price (\$/MWh)	Maximum	67.54	-53%	143.81	10000.00	
	Volume-Weighted Ave	30.81	-37%	48.84	44.12	
	Time-Weighted Ave	29.86	-37%	47.06	40.18	
	Minimum	12.34	-31%	17.80	-170.76	
Temperature °C (Sydney)	Maximum	21.7	-6%	23.2	40.9	
	Minimum	9.6	-14%	11.2	5.3	

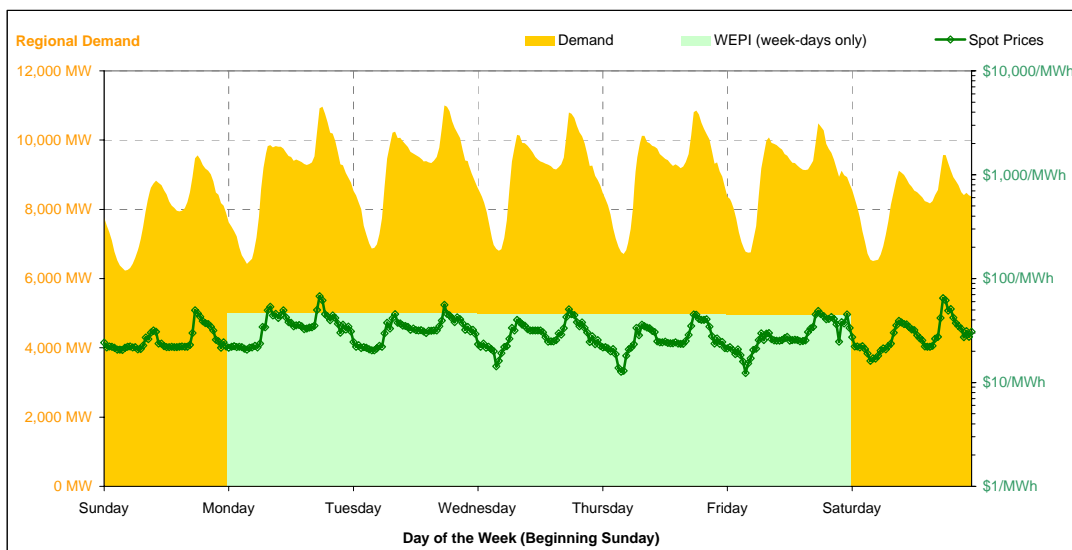


Note that prices below \$1/MWh have been reset to \$1/MWh for the purposes of this display

Current Week

All Data in this table is shown in MWh								
	Weekly Total	Sunday	Monday	Tuesday	Wednesday	Thursday	Friday	Saturday
<b>Total Production by Generation Company</b>								
Babcock & Brown Power	24,864	3,552	3,552	3,552	3,552	3,552	3,552	3,552
Delta Electricity	432,830	63,637	65,506	62,438	65,017	64,017	58,158	54,059
Eraring Energy	290,430	40,068	42,910	42,721	42,326	41,242	40,177	40,989
Macquarie Generation	528,119	65,933	73,309	80,193	78,946	78,151	78,497	73,092
Marubeni	20,304	1,920	3,294	3,293	3,296	3,292	3,291	1,920
Snowy Hydro (NSW)	15,338	116	4,580	3,626	2,103	1,168	2,044	1,703
TRUenergy	40,793	3,507	8,151	7,914	6,963	7,686	6,573	0
Origin Energy	1,519	0	1,040	479	0	0	0	0
Other NSW Plants	0	0	0	0	0	0	0	0
<b>Total internal production</b>	<b>1,354,196</b>	<b>178,731</b>	<b>202,340</b>	<b>204,214</b>	<b>202,201</b>	<b>199,106</b>	<b>192,291</b>	<b>175,314</b>
(Load at Pumped Storage)	0	0	0	0	0	0	0	0
<b>Net internal production</b>	<b>1,354,196</b>	<b>178,731</b>	<b>202,340</b>	<b>204,214</b>	<b>202,201</b>	<b>199,106</b>	<b>192,291</b>	<b>175,314</b>
<b>Percentage each company's production represents of the total internal production</b>								
Babcock & Brown Power	1.8%	2.0%	1.8%	1.7%	1.8%	1.8%	1.8%	2.0%
Delta Electricity	32.0%	35.6%	32.4%	30.6%	32.2%	32.2%	30.8%	30.8%
Eraring Energy	21.4%	22.4%	21.2%	20.9%	20.9%	20.7%	20.9%	23.4%
Macquarie Generation	39.0%	36.9%	36.2%	39.3%	39.0%	39.3%	40.8%	41.7%
Marubeni	1.5%	1.1%	1.6%	1.6%	1.6%	1.7%	1.7%	1.1%
Snowy Hydro (NSW)	1.1%	0.1%	2.3%	1.8%	1.0%	0.6%	1.1%	1.0%
TRUenergy	3.0%	2.0%	4.0%	3.9%	3.4%	3.9%	3.4%	0.0%
Origin Energy	0.1%	0.0%	0.5%	0.2%	0.0%	0.0%	0.0%	0.0%
Other NSW Plants	0.0%	0.0%	0.0%	0.0%	0.0%	0.0%	0.0%	0.0%
<b>Total Percentage</b>	<b>100.0%</b>	<b>100.0%</b>	<b>100.0%</b>	<b>100.0%</b>	<b>100.0%</b>	<b>100.0%</b>	<b>100.0%</b>	<b>100.0%</b>

Current Week (continued)



	Sunday	Monday	Tuesday	Wednesday	Thursday	Friday	Saturday
<b>For the Current Week</b>							
Total Energy (MWh)	191,429	215,445	221,339	218,555	218,751	215,505	197,296
Trading Demand Target (MW)	Maximum	9,562	10,963	10,998	10,794	10,484	9,572
	Average	7,976	8,977	9,222	9,106	9,115	8,979
	Minimum	6,229	6,427	6,872	6,805	6,714	6,748
Regional Load Factor (%)	83%	82%	84%	84%	84%	86%	86%
Wholesale Electricity Price Index (WEPI)	N/A	46.17	46.28	45.37	45.10	44.47	N/A
	Maximum	49.69	67.54	56.02	50.70	45.04	64.96
	Volume-Weighted Ave	26.69	36.89	33.27	30.21	27.87	29.56
Trading Price (\$/MWh)	Time-Weighted Ave	26.07	35.51	32.40	29.40	27.03	28.84
	Minimum	20.50	20.73	20.40	14.27	12.71	12.34
	Temperature °C (Sydney)	Maximum	20.1	18.9	20.1	21.3	21.5
Minimum	13.0	11.8	9.6	10.4	11.1	12.4	14.2
<b>Percentage Change from Same Week Last Year</b>							
Total Energy (MWh)	-1%	0%	1%	-1%	-1%	-1%	-4%
Trading Demand Target (MW)	Maximum	-1%	4%	1%	0%	1%	0%
	Average	-1%	0%	1%	-1%	-1%	-1%
	Minimum	-3%	-3%	-1%	-1%	-3%	-2%
Wholesale Electricity Price Index (WEPI)	N/A	-10%	-13%	-13%	-12%	-12%	N/A
	Maximum	-29%	-31%	-61%	-44%	-48%	-39%
	Volume-Weighted Ave	-34%	-31%	-53%	-32%	-31%	-34%
Trading Price (\$/MWh)	Time-Weighted Ave	-34%	-31%	-53%	-33%	-32%	-34%
	Minimum	10%	-2%	8%	-40%	-35%	-31%
	Temperature °C (Sydney)	Maximum	4%	-3%	2%	3%	0%
Minimum	-7%	-5%	-27%	-7%	-8%	-10%	-7%
<b>For the Same Week Last Year</b>							
Total Energy (MWh)	193,745	214,743	220,110	220,312	220,072	217,347	205,346
Trading Demand Target (MW)	Maximum	9,623	10,498	10,907	10,793	10,711	10,439
	Average	8,073	8,948	9,171	9,180	9,170	9,056
	Minimum	6,403	6,592	6,915	6,904	6,905	6,851
Regional Load Factor (%)	84%	85%	84%	85%	86%	87%	84%
Wholesale Electricity Price Index (WEPI)	N/A	51.15	53.27	52.14	51.32	50.41	N/A
	Maximum	69.72	98.35	143.81	90.07	86.55	70.29
	Volume-Weighted Ave	40.41	53.80	71.46	44.54	40.61	43.24
Trading Price (\$/MWh)	Time-Weighted Ave	39.21	51.71	68.39	43.55	39.47	42.00
	Minimum	18.68	21.20	18.90	23.67	19.69	17.80
	Temperature °C (Sydney)	Maximum	19.4	19.5	19.7	20.6	21.4
Minimum	14.0	12.4	13.2	11.2	12.0	13.8	15.2

Long-Term Trends

This table contains electricity futures pricing, supplied by d-cyphatrade. All data other than flat and peak quarterly pricing is implied.

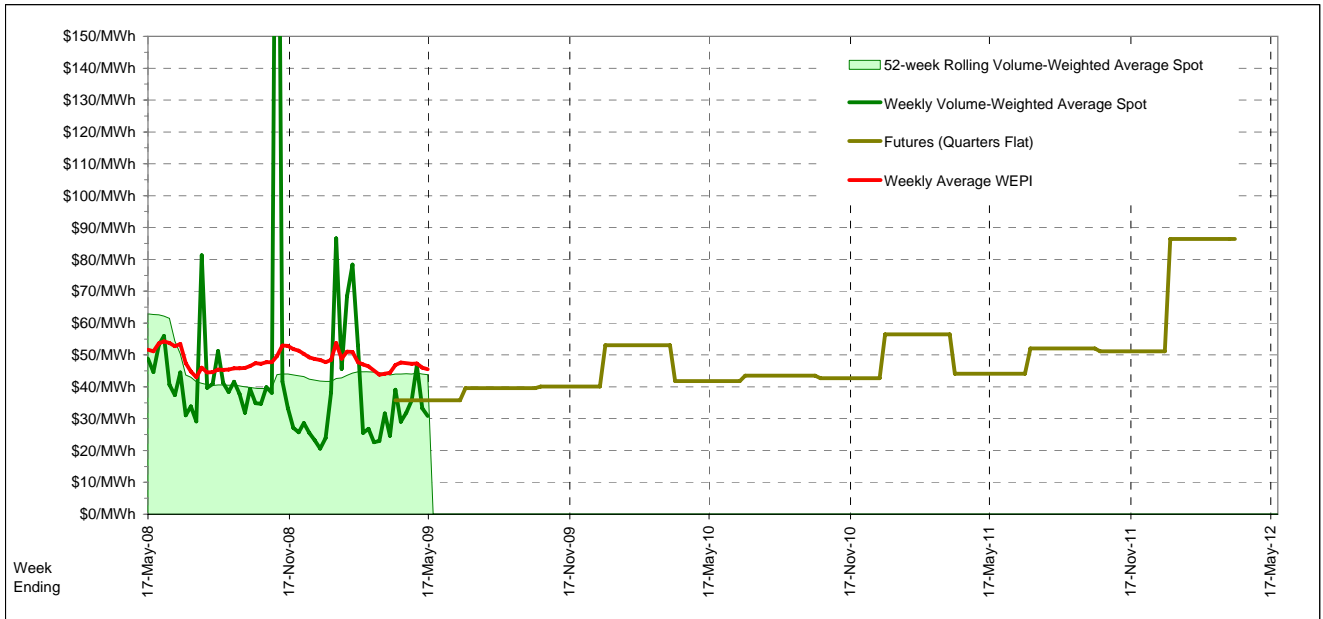
Futures settlement prices for flat load (all times)		CaYear	FinYear Ending	Q1	Q2	Q3	Q4
		2009			35.75	39.60	40.10
		2010	45.19	43.57	53.00	41.75	43.50
		2011	50.93	46.64	56.50	44.10	52.05
		2012	61.40	61.21	86.45		

Futures settlement prices for peak load (7am-10pm M-F)		CaYear	FinYear Ending	Q1	Q2	Q3	Q4
		2009			57.00	58.00	60.25
		2010	73.85	66.42	87.00	61.00	78.00
		2011	66.26	73.76	94.50	53.00	59.75
		2012	54.63	61.16	78.25		

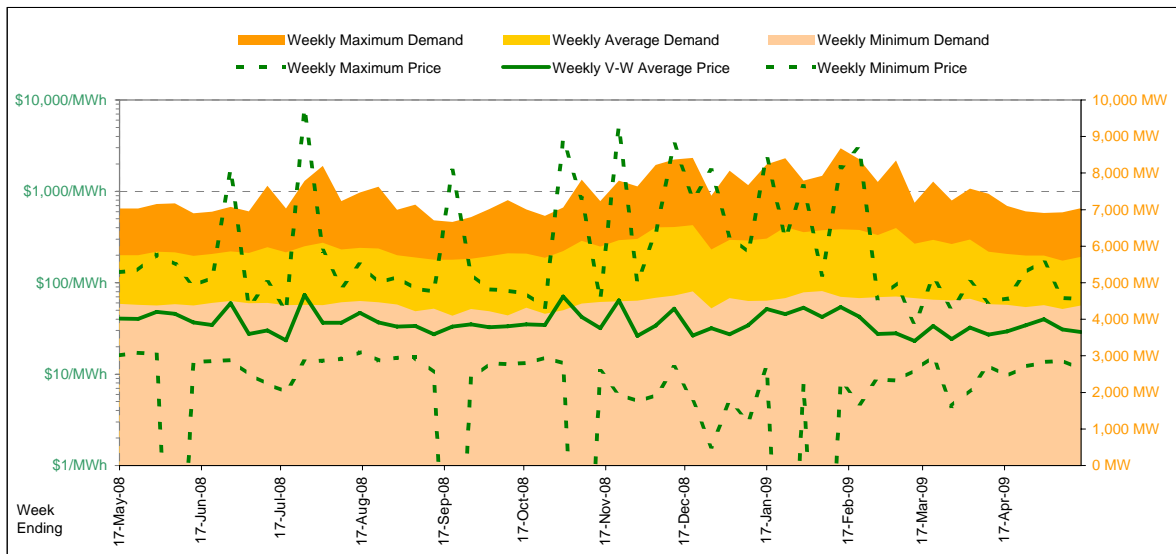
  

Implied Prices for Off-Peak Load (All other times)		CaYear	FinYear Ending	Q1	Q2	Q3	Q4
		2009			18.61	24.76	23.85
		2010	22.08	25.14	25.58	26.23	15.68
		2011	38.57	24.77	25.85	36.92	45.84
		2012	66.86	61.25	93.06		



Current Year

		Week 20 Ending Saturday			52-Weeks Ending Sat	
		16-May-09	% change	17-May-08	16-May-09	Date Occurred
Energy (MWh)	Total	958,802	-1%	966,622	52,430,435	
	Maximum	7,043	0%	7,035	8,677	9-Feb-09
	Average	5,707	-1%	5,754	6,002	
Trading Demand (MW)	Minimum	4,375	-1%	4,419	4,100	20-Sep-08
	Regional Load Factor (%)	81%		82%	69%	
Trading Price (\$/MWh)	Maximum	66.44	-49%	130.37	8058.07	
	Volume-Weighted Ave	28.80	-29%	40.37	37.83	
	Time-Weighted Ave	28.02	-28%	38.94	35.54	
	Minimum	11.29	-29%	15.99	-180.89	
Temperature °C (Brisbane)	Maximum	26.2	-3%	26.9	36.1	
	Minimum	9.0	-30%	12.9	3.7	

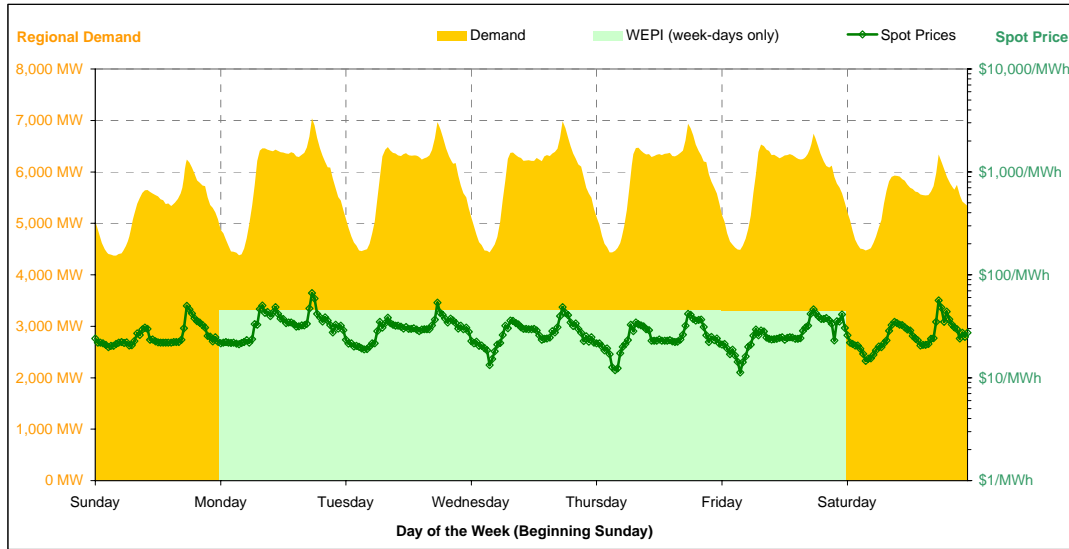


Note that prices below \$1/MWh have been reset to \$1/MWh for the purposes of this display

Current Week

All Data in this table is shown in MWh								
	Weekly Total	Sunday	Monday	Tuesday	Wednesday	Thursday	Friday	Saturday
<b>Total Production by Generation Company</b>								
AGL	26,875	0	4,317	4,753	4,828	4,867	4,736	3,375
Babcock & Brown Power	45,742	7,123	8,231	6,998	6,316	6,115	6,147	4,814
Braemar 2 Partnership	0	0	0	0	0	0	0	0
Callide Power Trading	60,647	8,796	8,799	8,809	8,599	8,531	8,532	8,582
CS Energy	230,248	30,629	33,834	33,553	33,489	32,544	32,605	33,596
Millmerran Energy Trader	122,203	9,938	12,718	20,181	19,890	19,744	19,725	20,007
Origin Energy	8,862	823	817	821	812	3,437	2,153	0
Stanwell	336,883	45,996	52,743	49,314	47,950	47,090	47,465	46,327
Tarong Energy	146,778	19,955	21,512	21,468	21,072	21,157	21,282	20,334
Tarong North Trader	73,968	10,632	10,483	10,632	10,624	10,413	10,554	10,630
Other QLD Plants	6,130	0	0	0	725	1,093	2,534	1,779
<b>Total internal production</b>	<b>1,058,333</b>	<b>133,891</b>	<b>153,452</b>	<b>156,527</b>	<b>154,302</b>	<b>154,989</b>	<b>155,730</b>	<b>149,443</b>
(Load at Pumped Storage)	-3,059	-1,236	-1,823	0	0	0	0	0
<b>Net internal production</b>	<b>1,055,274</b>	<b>132,655</b>	<b>151,629</b>	<b>156,527</b>	<b>154,302</b>	<b>154,989</b>	<b>155,730</b>	<b>149,443</b>
<b>Percentage each company's production represents of the total internal production</b>								
AGL	2.5%	0.0%	2.8%	3.0%	3.1%	3.1%	3.0%	2.3%
Babcock & Brown Power	4.3%	5.3%	5.4%	4.5%	4.1%	3.9%	3.9%	3.2%
Braemar 2 Partnership	0.0%	0.0%	0.0%	0.0%	0.0%	0.0%	0.0%	0.0%
Callide Power Trading	5.7%	6.6%	5.7%	5.6%	5.6%	5.5%	5.5%	5.7%
CS Energy	21.8%	22.9%	22.0%	21.4%	21.7%	21.0%	20.9%	22.5%
Millmerran Energy Trader	11.5%	7.4%	8.3%	12.9%	12.9%	12.7%	12.7%	13.4%
Origin Energy	0.8%	0.6%	0.5%	0.5%	0.5%	2.2%	1.4%	0.0%
Stanwell	31.8%	34.4%	34.4%	31.5%	31.1%	30.4%	30.5%	31.0%
Tarong Energy	13.9%	14.9%	14.0%	13.7%	13.7%	13.7%	13.7%	13.6%
Tarong North Trader	7.0%	7.9%	6.8%	6.8%	6.9%	6.7%	6.8%	7.1%
Other QLD Plants	0.6%	0.0%	0.0%	0.0%	0.5%	0.7%	1.6%	1.2%
<b>Total Percentage</b>	<b>100.0%</b>	<b>100.0%</b>	<b>100.0%</b>	<b>100.0%</b>	<b>100.0%</b>	<b>100.0%</b>	<b>100.0%</b>	<b>100.0%</b>

Current Week (continued)



	Sunday	Monday	Tuesday	Wednesday	Thursday	Friday	Saturday
<b>For the Current Week</b>							
Total Energy (MWh)	126,446	140,068	140,568	139,941	141,018	140,448	130,315
Trading Demand Target (MW)	Maximum	6,237	7,043	6,968	6,984	6,934	6,339
	Average	5,269	5,836	5,857	5,831	5,876	5,430
	Minimum	4,375	4,377	4,461	4,434	4,433	4,487
Regional Load Factor (%)	84%	83%	84%	83%	85%	87%	86%
Wholesale Electricity Price Index (WEPI)	N/A	45.81	45.87	45.35	45.11	44.27	N/A
	Maximum	50.04	66.44	53.48	48.52	41.76	56.25
	Volume-Weighted Ave	26.28	35.05	30.71	28.32	26.14	27.55
	Time-Weighted Ave	25.79	33.89	29.94	27.57	25.45	26.93
Trading Price (\$/MWh)	Maximum	19.79	21.17	18.87	13.23	11.81	14.52
	Minimum	25.4	23.6	21.5	24.3	25.4	24.9
	Temperature °C (Brisbane)	12.4	14.1	13.8	12.0	12.5	10.2
Minimum	12.4	14.1	13.8	12.0	12.5	10.2	9.0
<b>Percentage Change from Same Week Last Year</b>							
Total Energy (MWh)	-1%	-1%	-1%	-1%	0%	-1%	-1%
Trading Demand Target (MW)	Maximum	0%	-0%	1%	0%	-1%	1%
	Average	-1%	-1%	-1%	-1%	0%	-1%
	Minimum	-1%	-1%	-1%	-3%	-2%	-1%
Wholesale Electricity Price Index (WEPI)	N/A	-18%	-21%	-21%	-19%	-20%	N/A
	Maximum	-22%	-26%	-59%	-41%	-48%	-42%
	Volume-Weighted Ave	-25%	-20%	-43%	-26%	-28%	-30%
	Time-Weighted Ave	-24%	-20%	-42%	-26%	-28%	-30%
Trading Price (\$/MWh)	Maximum	17%	15%	16%	-34%	-34%	-29%
	Minimum	-2%	-10%	-13%	-0%	-1%	-3%
	Temperature °C (Brisbane)	-9%	3%	1%	-7%	-4%	-23%
Minimum	-9%	3%	1%	-7%	-4%	-23%	-38%
<b>For the Same Week Last Year</b>							
Total Energy (MWh)	128,003	141,647	142,287	141,699	140,468	141,315	131,204
Trading Demand Target (MW)	Maximum	6,272	7,035	6,995	6,938	6,906	6,786
	Average	5,333	5,902	5,929	5,904	5,853	5,888
	Minimum	4,419	4,435	4,525	4,552	4,546	4,538
Regional Load Factor (%)	85%	84%	85%	85%	85%	87%	87%
Wholesale Electricity Price Index (WEPI)	N/A	56.11	57.94	57.21	55.73	55.06	N/A
	Maximum	64.30	90.01	130.37	81.64	80.48	64.66
	Volume-Weighted Ave	35.04	43.93	54.36	38.30	36.28	34.93
	Time-Weighted Ave	34.12	42.16	51.94	37.32	35.22	34.01
Trading Price (\$/MWh)	Maximum	16.93	18.38	16.33	20.17	17.78	20.91
	Minimum	25.9	26.1	24.7	24.4	25.6	25.7
	Temperature °C (Brisbane)	13.6	13.7	13.6	12.9	13.0	13.3
Minimum	13.6	13.7	13.6	12.9	13.0	13.3	14.4

Long-Term Trends

This table contains electricity futures pricing, supplied by d-cyphatrade. All data other than flat and peak quarterly pricing is implied.

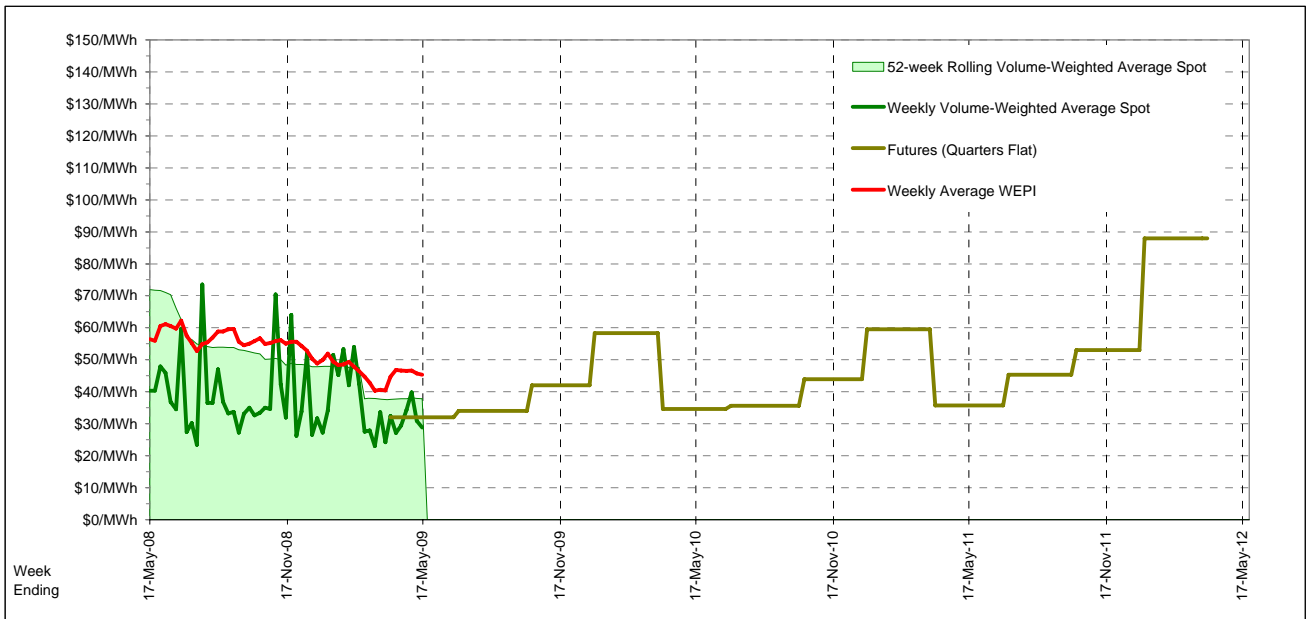
Futures settlement prices for flat load (all times)		CalYear	FinYear Ending	Q1	Q2	Q3	Q4
		2009			32.00	34.00	42.00
		2010	43.09	42.18	58.35	34.65	43.95
		2011	48.36	43.65	59.50	35.75	45.30
		2012	61.89	59.02	88.00		

Futures settlement prices for peak load (7am-10pm M-F)		CalYear	FinYear Ending	Q1	Q2	Q3	Q4
		2009			45.00	47.50	64.75
		2010	66.08	64.85	98.50	49.00	67.00
		2011	77.32	69.39	102.00	59.25	63.00
		2012	65.90	83.21	142.00		

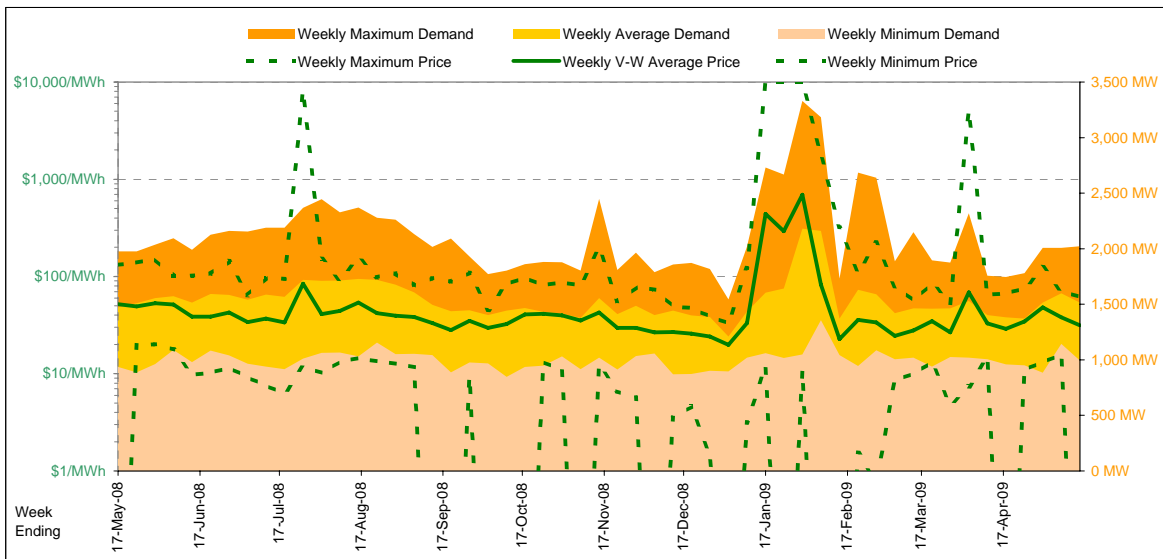
  

Implied Prices for Off-Peak Load (All other times)		CalYear	FinYear Ending	Q1	Q2	Q3	Q4
		2009			21.52	23.11	23.65
		2010	24.55	23.90	25.97	23.08	25.36
		2011	25.01	22.89	25.23	16.80	31.03
		2012	58.66	39.51	44.45		



Current Year

		Week 20 Ending Saturday			52-Weeks Ending Sat	
		16-May-09	% change	17-May-08	16-May-09	Date Occurred
Energy (MWh)	Total	254,646	3%	247,103	13,414,706	
	Maximum	2,021	2%	1,976	3,331	28-Jan-09
	Average	1,516	3%	1,471	1,536	
Trading Demand (MW)	Maximum	993	6%	935	847	11-Oct-08
	Minimum	75%		74%	46%	
Regional Load Factor (%)						
Trading Price (\$/MWh)	Maximum	61.29	-54%	131.85	9999.92	
	Volume-Weighted Ave	31.41	-39%	51.77	70.19	
	Time-Weighted Ave	30.14	-40%	49.89	52.35	
	Minimum	-6.77	-2,084%	-0.31	-1000.00	
Temperature °C (Adelaide)	Maximum	19.8	-21%	25.0	45.7	
	Minimum	7.2	-9%	7.9	0.7	

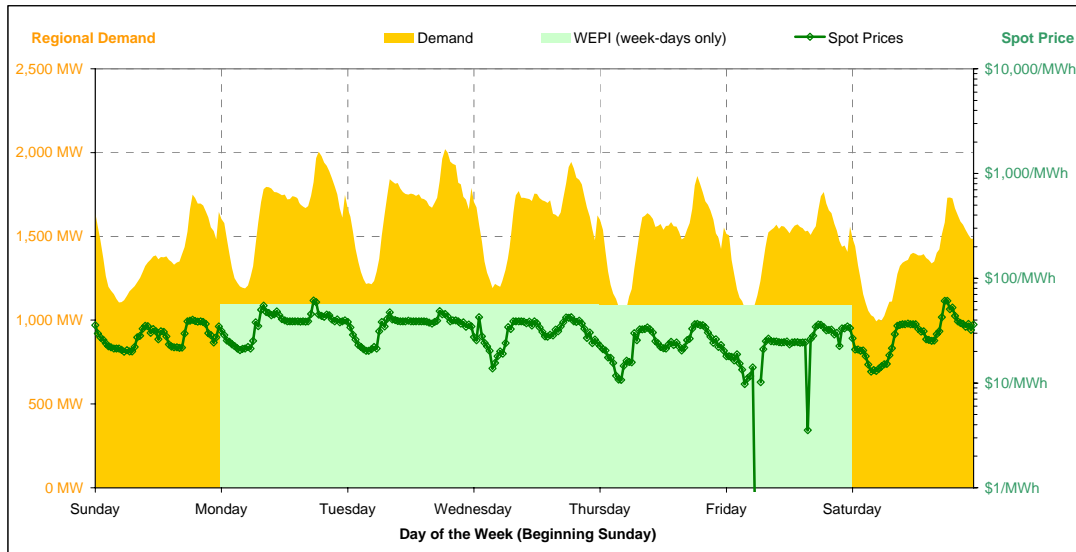


Note that prices below \$1/MWh have been reset to \$1/MWh for the purposes of this display

Current Week

All Data in this table is shown in MWh								
	Weekly Total	Sunday	Monday	Tuesday	Wednesday	Thursday	Friday	Saturday
<b>Total Production by Generation Company</b>								
AGL	55,680	5,882	10,592	9,025	6,755	8,019	7,827	7,583
International Power (Pelican Point)	59,855	6,464	10,374	10,345	9,469	8,701	9,320	5,184
International Power (Synergen)	0	0	0	0	0	0	0	0
Flinders Power	116,028	14,600	15,105	15,826	17,557	18,327	18,675	15,940
Origin Energy	5,339	934	1,137	474	437	1,433	521	405
Osborne	14,809	0	0	898	3,638	3,397	3,339	3,538
TRUenergy	0	0	0	0	0	0	0	0
Other SA Plants	5,942	1,066	510	544	178	895	1,821	930
<b>Total internal production</b>	<b>257,652</b>	<b>28,944</b>	<b>37,717</b>	<b>37,110</b>	<b>38,033</b>	<b>40,770</b>	<b>41,501</b>	<b>33,580</b>
(Load at Pumped Storage)	0	0	0	0	0	0	0	0
<b>Net internal production</b>	<b>257,652</b>	<b>28,944</b>	<b>37,717</b>	<b>37,110</b>	<b>38,033</b>	<b>40,770</b>	<b>41,501</b>	<b>33,580</b>
<b>Percentage each company's production represents of the total internal production</b>								
AGL	21.6%	20.3%	28.1%	24.3%	17.8%	19.7%	18.9%	22.6%
International Power (Pelican Point)	23.2%	22.3%	27.5%	27.9%	24.9%	21.3%	22.5%	15.4%
International Power (Synergen)	0.0%	0.0%	0.0%	0.0%	0.0%	0.0%	0.0%	0.0%
Flinders Power	45.0%	50.4%	40.0%	42.6%	46.2%	45.0%	45.0%	47.5%
Origin Energy	2.1%	3.2%	3.0%	1.3%	1.1%	3.5%	1.3%	1.2%
Osborne	5.7%	0.0%	0.0%	2.4%	9.6%	8.3%	8.0%	10.5%
TRUenergy	0.0%	0.0%	0.0%	0.0%	0.0%	0.0%	0.0%	0.0%
Other SA Plants	2.3%	3.7%	1.4%	1.5%	0.5%	2.2%	4.4%	2.8%
<b>Total Percentage</b>	<b>100.0%</b>	<b>100.0%</b>	<b>100.0%</b>	<b>100.0%</b>	<b>100.0%</b>	<b>100.0%</b>	<b>100.0%</b>	<b>100.0%</b>

Current Week (continued)



	Sunday	Monday	Tuesday	Wednesday	Thursday	Friday	Saturday
<b>For the Current Week</b>							
Total Energy (MWh)	33,430	39,475	39,992	38,690	35,744	34,779	32,538
Trading Demand Target (MW)	Maximum	1,750	2,005	2,021	1,944	1,860	1,732
	Average	1,393	1,645	1,666	1,612	1,489	1,449
	Minimum	1,105	1,190	1,214	1,192	1,034	1,040
Regional Load Factor (%)	80%	82%	82%	83%	80%	82%	78%
Wholesale Electricity Price Index (WEPI)	N/A	56.86	56.84	56.24	55.57	55.73	N/A
	Maximum	40.22	61.29	48.77	42.42	36.77	36.20
	Volume-Weighted Ave	29.05	39.08	36.53	32.20	25.28	23.77
Trading Price (\$/MWh)	Time-Weighted Ave	28.34	37.84	35.62	31.39	24.44	22.83
	Minimum	19.87	20.67	20.27	13.79	10.71	-6.77
	Maximum	16.8	19.8	18.8	16.2	18.5	17.5
Temperature °C (Adelaide)	Minimum	12.5	7.2	8.2	9.8	11.7	13.5
Maximum	16.8	19.8	18.8	16.2	18.5	17.5	18.3
Minimum	12.5	7.2	8.2	9.8	11.7	13.5	14.6
<b>Percentage Change from Same Week Last Year</b>							
Total Energy (MWh)	4%	4%	6%	7%	4%	-5%	1%
Trading Demand Target (MW)	Maximum	7%	6%	9%	9%	9%	-11%
	Average	4%	4%	6%	7%	4%	-5%
	Minimum	0%	4%	6%	7%	2%	2%
Wholesale Electricity Price Index (WEPI)	N/A	-17%	-18%	-17%	-18%	-20%	N/A
Trading Price (\$/MWh)	Maximum	-43%	-30%	-63%	-54%	-23%	-38%
	Volume-Weighted Ave	-36%	-33%	-50%	-33%	-34%	-47%
	Time-Weighted Ave	-36%	-33%	-49%	-33%	-35%	-46%
Temperature °C (Adelaide)	Minimum	-10%	-14%	-13%	-47%	-45%	-199%
	Maximum	-21%	-12%	-21%	-35%	-20%	18%
	Minimum	49%	-9%	1%	8%	4%	18%
Maximum	49%	-9%	1%	8%	4%	18%	68%
<b>For the Same Week Last Year</b>							
Total Energy (MWh)	32,086	38,055	37,771	36,293	34,338	36,501	32,061
Trading Demand Target (MW)	Maximum	1,628	1,899	1,847	1,789	1,701	1,976
	Average	1,337	1,586	1,574	1,512	1,431	1,521
	Minimum	1,101	1,149	1,149	1,115	1,014	1,022
Regional Load Factor (%)	82%	83%	85%	85%	84%	77%	77%
Wholesale Electricity Price Index (WEPI)	N/A	68.21	68.95	68.03	67.75	69.80	N/A
	Maximum	70.48	87.88	131.85	92.49	47.54	78.98
	Volume-Weighted Ave	45.45	58.21	72.37	48.03	38.25	44.56
Trading Price (\$/MWh)	Time-Weighted Ave	44.48	56.41	69.96	47.09	37.39	42.40
	Minimum	22.19	24.11	23.40	26.10	19.38	6.85
	Maximum	21.2	22.6	23.8	25.0	23.2	14.8
Temperature °C (Adelaide)	Minimum	8.4	7.9	8.1	9.1	11.2	8.7
Maximum	21.2	22.6	23.8	25.0	23.2	14.8	14.7
Minimum	8.4	7.9	8.1	9.1	11.2	11.4	8.7

Long-Term Trends

This table contains electricity futures pricing, supplied by d-cyphatrade. All data other than flat and peak quarterly pricing is implied.

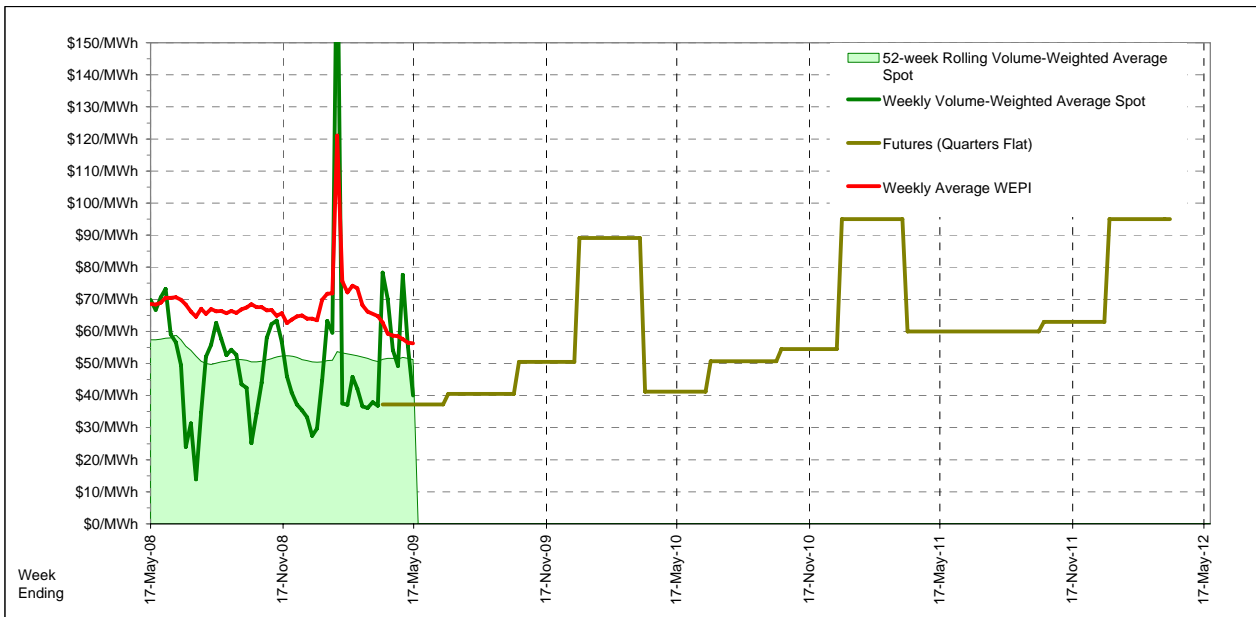
<i>Futures settlement prices</i> for flat load (all times)	CalYear	FinYear Ending	Q1	Q2	Q3	Q4
2009				37.25	40.50	50.50
2010	58.75	55.19	89.10	41.25	50.65	54.45
2011	69.39	64.87	95.00	60.00	60.00	63.00
2012	69.46	69.46	95.00			

<i>Futures settlement prices</i> for peak load (7am-10pm M-F)	CalYear	FinYear Ending	Q1	Q2	Q3	Q4
2009				54.00	50.70	86.50
2010	78.02	75.30	102.00	63.00	73.00	74.00
2011	66.67	76.90	100.00	61.00	61.00	45.50
2012	56.06	60.85	100.00			

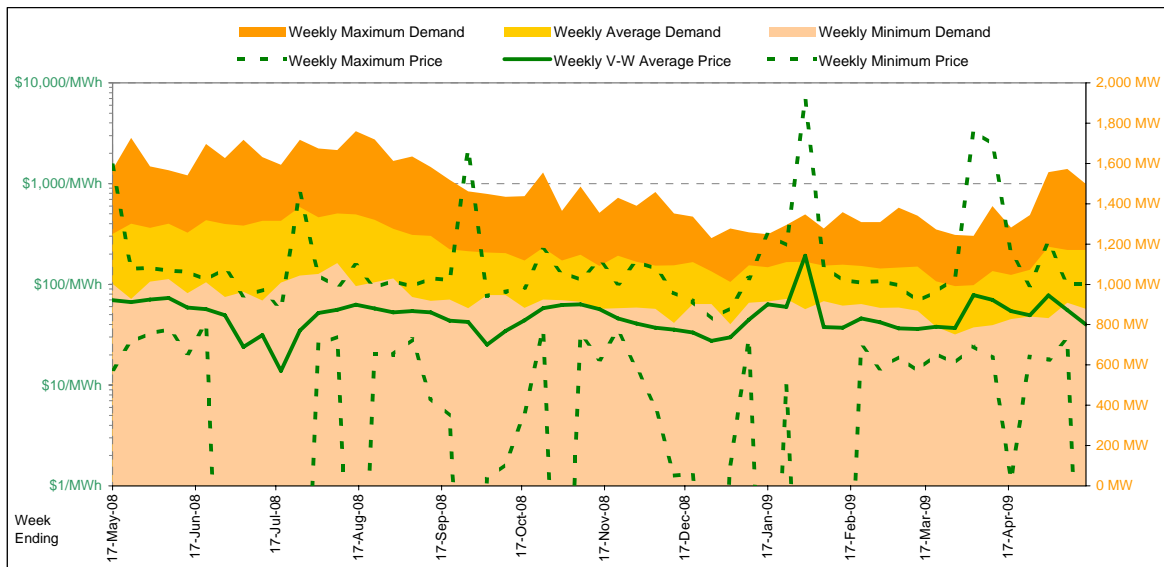
  

<i>Implied Prices</i> for Off-Peak Load (All other times)	CalYear	FinYear Ending	Q1	Q2	Q3	Q4
2009				23.74	32.27	21.47
2010	43.21	38.97	78.70	23.71	32.63	38.68
2011	71.58	55.17	90.97	59.19	59.19	77.11
2012	80.27	76.40	90.97			



Current Year

		Week 20 Ending Saturday			52-Weeks Ending Sat	
		16-May-09	% change	17-May-08	16-May-09	Date Occurred
Energy (MWh)	Total	196,822	-6%	210,103	10,209,178	
	Maximum	1,498	-5%	1,569	1,760	11-Aug-08
	Average	1,172	-6%	1,251	1,169	
Trading Demand (MW)	Minimum	879	-12%	1,003	751	22-Mar-09
	Regional Load Factor (%)	78%		80%	66%	
Trading Price (\$/MWh)	Maximum	100.30	-93%	1509.63	6880.22	
	Volume-Weighted Ave	40.04	-43%	69.86	50.84	
	Time-Weighted Ave	39.65	-43%	69.42	49.66	
	Minimum	-165.22	-1,241%	14.48	-999.76	
Temperature °C (Hobart)	Maximum	16.7	-16%	19.9	33.5	
	Minimum	5.1	2%	5.0	0.3	

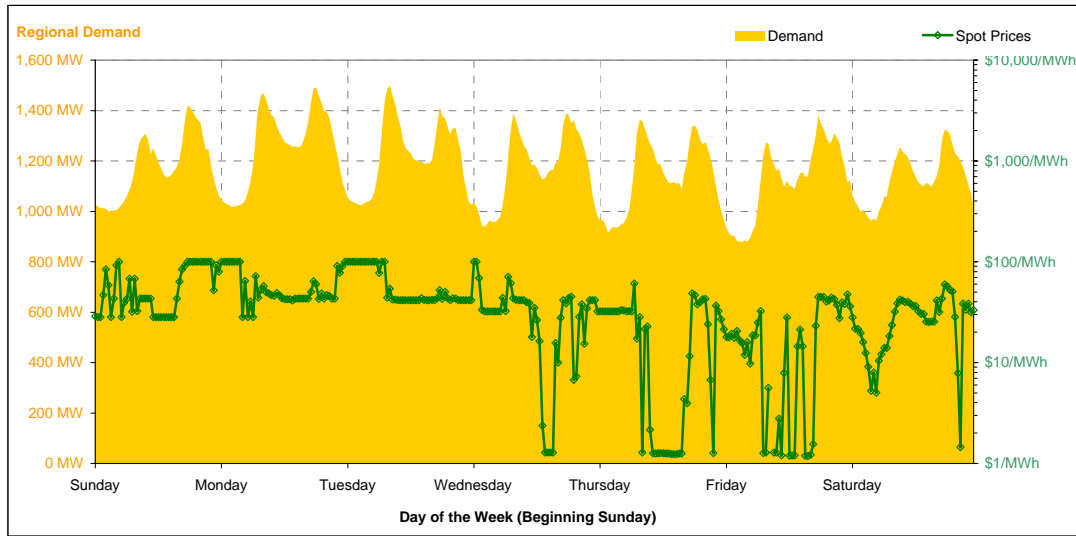


Note that prices below \$1/MWh have been reset to \$1/MWh for the purposes of this display

Current Week

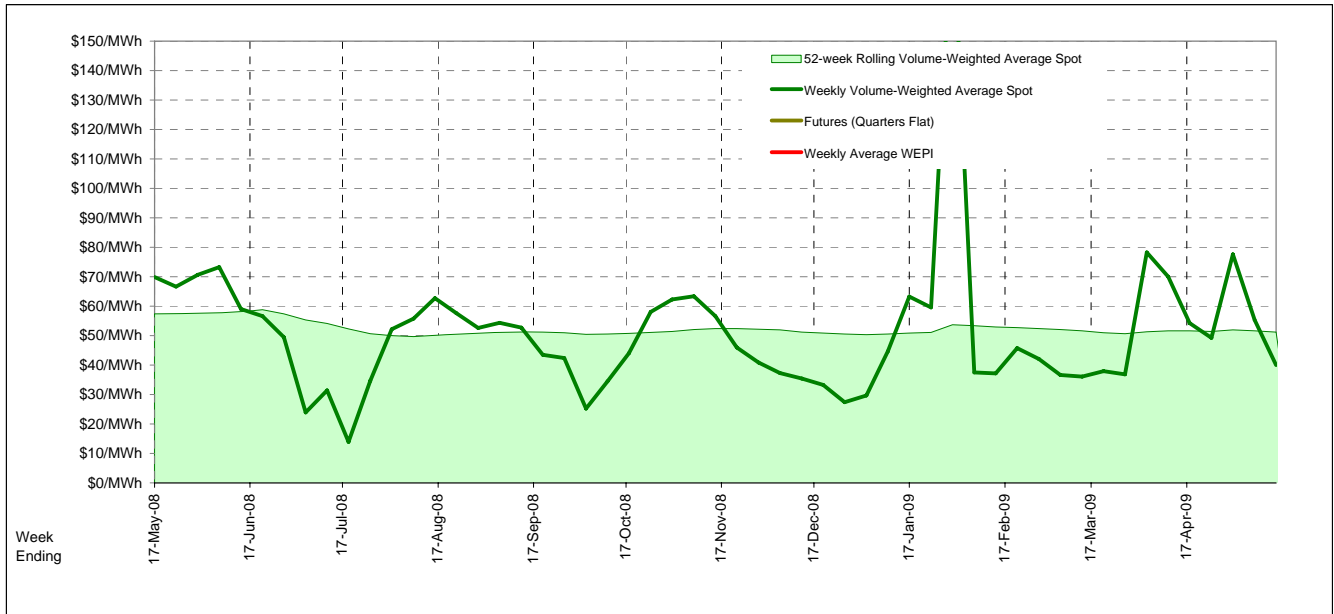
All Data in this table is shown in MWh								
Weekly Total	Sunday	Monday	Tuesday	Wednesday	Thursday	Friday	Saturday	
<b>Total Production by Generation Company</b>								
Aurora Energy	5,490	1,124	1,392	1,271	742	463	85	414
Hydro Tasmania	138,692	17,567	20,817	19,646	19,612	19,366	20,140	21,546
Bell Bay Power	0	0	0	0	0	0	0	0
Other TAS Plants	0	0	0	0	0	0	0	0
<b>Total internal production</b>	<b>144,182</b>	<b>18,691</b>	<b>22,209</b>	<b>20,917</b>	<b>20,354</b>	<b>19,829</b>	<b>20,225</b>	<b>21,959</b>
(Load at Pumped Storage)	0	0	0	0	0	0	0	0
<b>Net internal production</b>	<b>144,182</b>	<b>18,691</b>	<b>22,209</b>	<b>20,917</b>	<b>20,354</b>	<b>19,829</b>	<b>20,225</b>	<b>21,959</b>
<b>Percentage each company's production represents of the total internal production</b>								
Aurora Energy	3.8%	6.0%	6.3%	6.1%	3.6%	2.3%	0.4%	1.9%
Hydro Tasmania	96.2%	94.0%	93.7%	93.9%	96.4%	97.7%	99.6%	98.1%
Bell Bay Power	0.0%	0.0%	0.0%	0.0%	0.0%	0.0%	0.0%	0.0%
Other TAS Plants	0.0%	0.0%	0.0%	0.0%	0.0%	0.0%	0.0%	0.0%
<b>Total Percentage</b>	<b>100.0%</b>	<b>100.0%</b>	<b>100.0%</b>	<b>100.0%</b>	<b>100.0%</b>	<b>100.0%</b>	<b>100.0%</b>	<b>100.0%</b>

Current Week (continued)



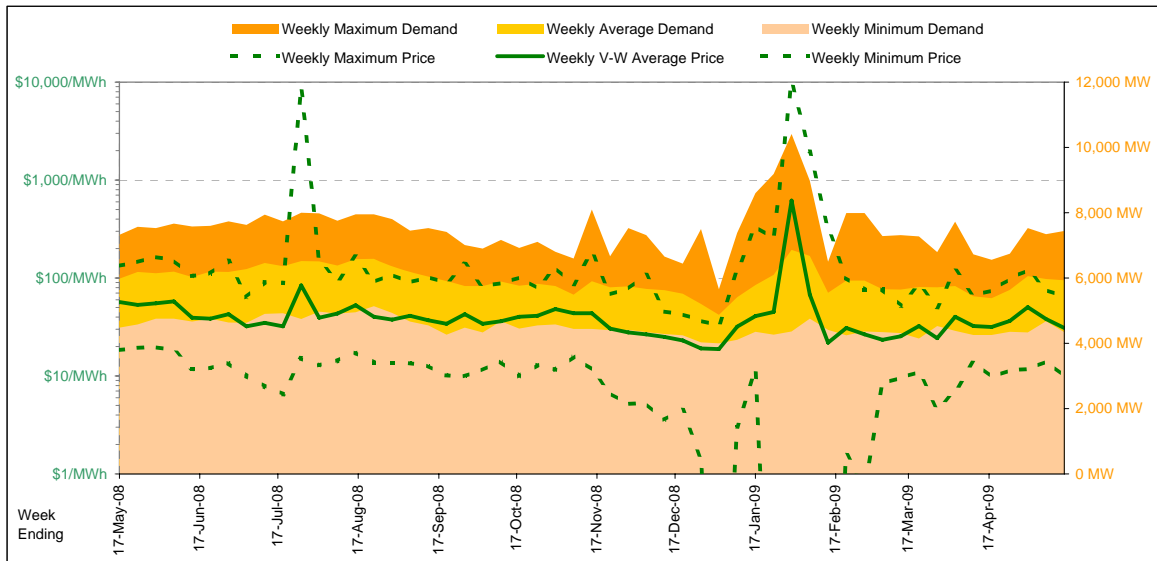
	Sunday	Monday	Tuesday	Wednesday	Thursday	Friday	Saturday
<b>For the Current Week</b>							
Total Energy (MWh)	28,191	30,143	29,279	27,967	27,277	26,985	26,982
Trading Demand Target (MW)	Maximum	1,419	1,490	1,498	1,388	1,363	1,382
	Average	1,175	1,256	1,220	1,165	1,137	1,124
	Minimum	998	1,018	1,024	938	916	879
Regional Load Factor (%)	Maximum	100.30	100.30	100.30	100.29	60.90	47.45
	Average	83%	84%	81%	84%	83%	81%
Trading Price (\$/MWh)	Volume-Weighted Ave	60.27	57.14	58.77	33.84	20.91	16.04
	Time-Weighted Ave	58.94	58.82	60.40	34.12	21.21	15.72
	Maximum	28.30	28.30	41.47	1.28	1.24	-165.22
	Minimum	16.4	13.9	16.7	14.7	16.0	16.2
Temperature °C (Hobart)	6.7	8.6	7.5	9.1	8.2	10.6	5.1
<b>Percentage Change from Same Week Last Year</b>							
Total Energy (MWh)	-2%	-3%	-7%	-9%	-10%	-9%	-2%
Trading Demand Target (MW)	Maximum	1%	-0%	-5%	-9%	-12%	-8%
	Average	-2%	-3%	-7%	-9%	-10%	-9%
	Minimum	-2%	-4%	-5%	-12%	-15%	-13%
Trading Price (\$/MWh)	Maximum	6%	2%	-9%	5%	-28%	-46%
	Volume-Weighted Ave	-5%	-25%	-22%	-37%	-60%	-73%
	Time-Weighted Ave	-7%	-23%	-20%	-36%	-59%	-73%
	Minimum	2%	-31%	-14%	-97%	-91%	-621%
Temperature °C (Hobart)	19%	-13%	-8%	-22%	-15%	-14%	-24%
Minimum	34%	13%	-9%	2%	14%	33%	-50%
<b>For the Same Week Last Year</b>							
Total Energy (MWh)	28,842	31,019	31,652	30,872	30,304	29,754	27,661
Trading Demand Target (MW)	Maximum	1,402	1,491	1,569	1,532	1,545	1,502
	Average	1,202	1,292	1,319	1,286	1,263	1,240
	Minimum	1,020	1,062	1,079	1,066	1,073	1,013
Regional Load Factor (%)	Maximum	86%	87%	84%	84%	82%	83%
	Average	94.95	98.46	109.98	95.22	84.07	87.19
Trading Price (\$/MWh)	Volume-Weighted Ave	63.29	76.68	75.64	53.63	51.73	58.90
	Time-Weighted Ave	63.17	76.30	75.09	53.21	51.19	58.38
	Maximum	27.85	41.05	48.28	36.94	14.48	31.73
	Minimum	13.8	16.0	18.1	18.9	18.9	18.9
Temperature °C (Hobart)	5.0	7.6	8.2	8.9	7.2	8.0	10.1

Long-Term Trends



Current Year

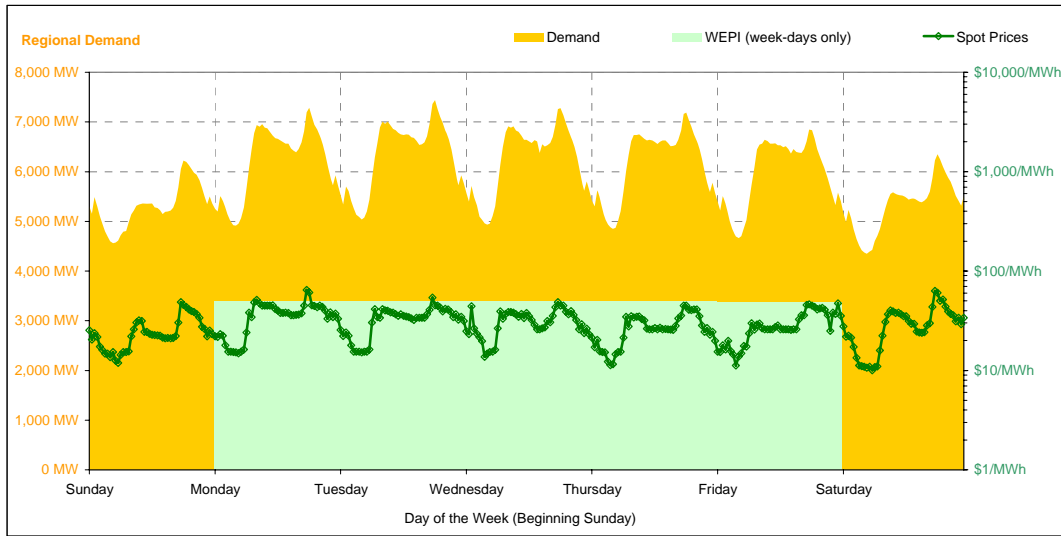
		Week 20 Ending Saturday			52-Weeks Ending Sat	
		16-May-09	% change	17-May-08	16-May-09	Date Occurred
Energy (MWh)	Total	996,662	-1%	1,004,393	51,864,757	
	Maximum	7,438	2%	7,327	10,415	29-Jan-09
	Average	5,933	-1%	5,979	5,937	
Trading Demand (MW)	Maximum	4,348	-3%	4,482	4,004	28-Dec-08
	Minimum	80%		82%	57%	
Regional Load Factor (%)						
Trading Price (\$/MWh)	Maximum	64.46	-51%	132.87	10000.00	
	Volume-Weighted Ave	30.87	-46%	56.92	51.17	
	Time-Weighted Ave	29.80	-46%	55.28	43.75	
	Minimum	10.02	-46%	18.45	-496.71	
Temperature °C (Melbourne)	Maximum	19.7	-10%	21.9	46.4	
	Minimum	8.2	21%	6.8	2.2	



Current Week

All Data in this table is shown in MWh								
	Weekly Total	Sunday	Monday	Tuesday	Wednesday	Thursday	Friday	Saturday
<b>Total Production by Generation Company</b>								
AGL	2,709	152	273	160	159	372	769	826
Anglesea	0	0	0	0	0	0	0	0
Babcock & Brown Power	242	35	35	35	35	35	35	35
Ecogen Energy	12,593	121	435	4,661	4,705	0	400	2,272
Energy Brix	24,767	3,535	3,516	3,499	3,550	3,557	3,593	3,518
International Power (Hazelwood)	231,677	31,828	35,951	36,554	32,594	33,081	34,637	27,033
Loy Yang B	171,292	25,273	25,267	25,200	23,712	25,193	21,751	24,897
Loy Yang Power	351,516	51,505	51,376	52,045	51,954	52,198	51,540	40,900
Snowy Hydro	40,491	555	8,695	7,561	8,518	7,112	6,768	1,284
TRUenergy	243,034	35,450	35,238	35,350	34,953	34,932	32,274	34,839
Other VIC Plants	0	0	0	0	0	0	0	0
<b>Total internal production</b>	<b>1,078,319</b>	<b>148,452</b>	<b>160,785</b>	<b>165,062</b>	<b>160,176</b>	<b>156,478</b>	<b>151,765</b>	<b>135,603</b>
(Load at Pumped Storage)	0	0	0	0	0	0	0	0
<b>Net internal production</b>	<b>1,078,319</b>	<b>148,452</b>	<b>160,785</b>	<b>165,062</b>	<b>160,176</b>	<b>156,478</b>	<b>151,765</b>	<b>135,603</b>
<b>Percentage each company's production represents of the total internal production</b>								
AGL	0.3%	0.1%	0.2%	0.1%	0.1%	0.2%	0.5%	0.6%
Anglesea	0.0%	0.0%	0.0%	0.0%	0.0%	0.0%	0.0%	0.0%
Babcock & Brown Power	0.0%	0.0%	0.0%	0.0%	0.0%	0.0%	0.0%	0.0%
Ecogen Energy	1.2%	0.1%	0.3%	2.8%	2.9%	0.0%	0.3%	1.7%
Energy Brix	2.3%	2.4%	2.2%	2.1%	2.2%	2.3%	2.4%	2.6%
International Power (Hazelwood)	21.5%	21.4%	22.4%	22.1%	20.3%	21.1%	22.8%	19.9%
Loy Yang B	15.9%	17.0%	15.7%	15.3%	14.8%	16.1%	14.3%	18.4%
Loy Yang Power	32.6%	34.7%	32.0%	31.5%	32.4%	33.4%	34.0%	30.2%
Snowy Hydro	3.8%	0.4%	5.4%	4.6%	5.3%	4.5%	4.5%	0.9%
TRUenergy	22.5%	23.9%	21.9%	21.4%	21.8%	22.3%	21.3%	25.7%
Other VIC Plants	0.0%	0.0%	0.0%	0.0%	0.0%	0.0%	0.0%	0.0%
<b>Total Percentage</b>	<b>100.0%</b>	<b>100.0%</b>	<b>100.0%</b>	<b>100.0%</b>	<b>100.0%</b>	<b>100.0%</b>	<b>100.0%</b>	<b>100.0%</b>

Current Week (continued)



	Sunday	Monday	Tuesday	Wednesday	Thursday	Friday	Saturday
<b>For the Current Week</b>							
Total Energy (MWh)	127,453	149,103	151,977	149,522	147,831	143,118	127,659
Trading Demand Target (MW)	Maximum	6,224	7,288	7,438	7,278	7,187	6,845
	Average	5,311	6,213	6,332	6,230	6,160	5,963
	Minimum	4,563	4,917	5,039	4,934	4,852	4,662
Regional Load Factor (%)	85%	85%	85%	86%	86%	87%	84%
Wholesale Electricity Price Index (WEPI)	N/A	49.65	49.68	49.21	49.02	48.14	N/A
	Maximum	48.68	64.46	54.14	48.65	44.95	47.37
	Minimum	25.32	36.90	33.62	31.71	27.81	29.10
Trading Price (\$/MWh)	Volume-Weighted Ave	24.64	35.58	32.67	30.89	26.93	28.45
	Time-Weighted Ave	11.89	14.92	15.20	13.66	11.34	11.24
	Minimum	18.2	17.8	17.5	17.0	17.0	19.7
Temperature °C (Melbourne)	Maximum	11.2	8.2	9.5	9.8	12.3	14.0
	Minimum	18.2	17.8	17.5	17.0	17.0	19.7
<b>Percentage Change from Same Week Last Year</b>							
Total Energy (MWh)	0%	1%	0%	-0%	-0%	1%	-7%
Trading Demand Target (MW)	Maximum	-1%	1%	2%	2%	2%	1%
	Average	0%	1%	0%	-0%	-0%	1%
	Minimum	2%	3%	3%	-2%	-3%	-1%
Wholesale Electricity Price Index (WEPI)	N/A	-10%	-11%	-10%	-9%	-9%	N/A
Trading Price (\$/MWh)	Maximum	-32%	-31%	-59%	-49%	-52%	-42%
	Volume-Weighted Ave	-43%	-37%	-54%	-36%	-40%	-58%
	Time-Weighted Ave	-43%	-37%	-54%	-36%	-41%	-59%
Temperature °C (Melbourne)	Maximum	-41%	-33%	-26%	-47%	-44%	-39%
	Minimum	18%	0%	-4%	-18%	-22%	6%
<b>For the Same Week Last Year</b>							
Total Energy (MWh)	126,912	147,770	151,547	149,977	148,138	142,297	137,753
Trading Demand Target (MW)	Maximum	6,300	7,232	7,327	7,167	7,077	6,783
	Average	5,288	6,157	6,314	6,249	6,172	5,929
	Minimum	4,482	4,768	4,906	5,046	4,987	4,706
Regional Load Factor (%)	84%	85%	86%	87%	87%	87%	87%
Wholesale Electricity Price Index (WEPI)	N/A	55.19	55.96	54.73	54.10	53.08	N/A
	Maximum	71.94	92.82	132.87	95.72	93.44	81.84
	Minimum	44.12	58.13	72.62	49.37	46.53	53.01
Trading Price (\$/MWh)	Volume-Weighted Ave	43.21	56.19	70.35	48.43	45.36	51.72
	Time-Weighted Ave	20.31	22.33	20.60	25.67	20.19	18.45
	Minimum	15.4	17.8	18.2	20.7	21.9	18.5
Temperature °C (Melbourne)	Maximum	12.2	8.9	6.8	7.4	8.2	10.0
	Minimum	15.4	17.8	18.2	20.7	21.9	18.5

Long-Term Trends

This table contains electricity futures pricing, supplied by d-cyphatrade. All data other than flat and peak quarterly pricing is implied.

		CalYear	FinYear Ending	Q1	Q2	Q3	Q4
<b>Actual Prices for Flat Load (All Times)</b>	2009				37.40	38.50	38.50
	2010	48.19	46.45	67.50	41.70	42.65	41.25
	2011	53.50	49.13	70.50	42.50	50.75	50.50
	2012	68.97	63.88	96.00			
<b>Actual Prices for Peak Load (7am-10pm M-F)</b>	2009				55.35	56.00	57.00
	2010	76.45	73.12	122.00	59.65	62.00	64.00
	2011	76.55	77.38	135.00	50.20	57.20	65.55
	2012	79.08	79.05	144.20			
<b>Implied Prices for Off-Peak Load (All other times)</b>	2009				22.92	24.39	23.58
	2010	25.40	24.94	23.55	27.22	27.05	22.90
	2011	34.91	26.35	18.48	36.29	45.55	38.36
	2012	60.82	51.65	57.13			

