

esaa is seeking a General Manager Strategic and International Policy to join its team in Melbourne.

See page 19 for further details.

This week's volume-weighted electricity price (\$/MWh)

NSW:	\$25.31
Vic:	\$24.18
Qld:	\$24.43
SA:	\$27.00
Tas:	\$22.29

Retail price regulation stifling competition: AEMC

Retail price regulation in energy markets risks stifling the effective development of competitive markets and is against the long-term interests of customers, and should be removed, says the Australian Energy Market Commission.

In a major review looking at whether Australia's energy market frameworks require adjustment ahead of the commencement of the Carbon Pollution Reduction Scheme and expanded Renewable Energy Target, the AEMC says the effective regulation of retail prices will become significantly more challenging as the CPRS introduces increased uncertainty and volatility into the wholesale energy purchase costs of retailers.

It notes that the issue is more material if financial instruments that enable retailers to hedge the price risk of carbon-inclusive energy costs are slow to emerge.

"The interplay of more variable, unhedged costs and regulated retail tariffs is a threat to both retailers and the development of competitive markets if the costs of the CPRS are not reflected in retail prices in a timely manner.

"The most effective way of dealing with this threat is the removal of retail price regulation where competition has been demonstrated to be effective," the AEMC says, noting that where regulation continues, the states should introduce increased flexibility.

AEMC Stakeholder Advisory Committee member and Energy Supply Association of Australia Chief Executive Officer Brad Page says a recommendation for increased flexibility in retail price regulation doesn't go far enough.

"We remain disappointed on retail price regulation. The first, best solution is a competitive market that provides consumer choice without price controls, but failing that, a single, nationally consistent methodology for determining retail electricity prices should be developed and adopted across all jurisdictions. The AEMC, with responsibility for rule making and market development, should determine an appropriate methodology. The report again points to the need for state governments to get on and finish the reform task," says Page.

"However, the AEMC has got the balance right by not throwing all of the market frameworks up in the air. esaa welcomes the AEMC's recognition that it should not completely unravel the existing market arrangements at a time when the CPRS and expanded RET will impose significant and long-lasting change on the energy supply sector.

"This is a work in progress," says Page. "Constant monitoring and review of the energy market frameworks will also be vital from here as the CPRS and eRET are rolled out and their real impacts can be observed."

The AEMC's recommended areas for change to Australia's energy market frameworks include introducing a new framework for the connection of clusters of new generation to energy networks, reforming transmission charges to reflect the costs of investment required to allow electricity to flow between regions and allowing the AEMO to contract for short term generation capacity.

The final report also recommends improvements to the Western Australian market relating to the existing frameworks for connections, use of the network and system dispatch.

Page says that clarifying the cost implications from congestion and better price signals for the efficient location of new generation investment are important, but that more work needs to be done to determine the scope of the problem before pursuing further change.

"In order to respond to the challenges of climate change policies, Australia's energy market frameworks need to be refined, not redesigned," says AEMC Chair Dr John Tamblyn.

"It is important to recognise that the review has been undertaken in a changing policy environment. There will be a need for ongoing monitoring of the energy market as it responds to implementation of climate change policies so that the need for any further changes can be considered in a timely manner," Tamblyn says.

The AEMC's recommendations will now be considered by the Ministerial Council on Energy.

Onwards and upwards for Australia's TNSPs

Australia's transmission network service providers are financially healthy, are continuing to upgrade and replace ageing networks and are improving their service standards, according to the Australian Energy Regulator's 2007-08 electricity performance report.

TNSPs covered in the report include ElectraNet, EnergyAustralia, SP AusNet, Transend Networks and VENCORP (now subsumed into the Australian Energy Market Operator).

AER Chair Steve Edwell says the 2007-08 report is an important step to improving the transparency of the financial and operational performance of transmission businesses in the National Electricity Market, and identifies three important trends.

"First, capital expenditure is continuing to trend upwards, primarily reflecting the continuation of investments by TNSPs to upgrade and replace ageing networks to meet network performance requirements," says Edwell.

"Total capital expenditure over the past five years has exceeded \$4 billion, and was 7.8 per cent higher than forecast for the 2007-08 financial year.

"Second, operating and maintenance expenditure stands at almost \$1.9 billion during the past five years. The operating results also show that the sector remains financial healthy," Edwell says.

“Third, service standards are improving, with most TNSPs outperforming relative to historic trends. As a result, businesses have been rewarded with service standards incentive payments totalling almost \$10 million for the 2008 calendar year.”

Edwell says the results are encouraging and show that the regulatory regime has matured.

“Nonetheless, there is still scope for improvement and the AER has introduced a market impact measure in the service standards regime to strengthen the incentives for TNSPs to better manage network outages and minimise the effect of outages on spot electricity prices. This regime will ensure that TNSP service performance will continue to improve,” says Edwell.

The report provides revenue, profit, expenditure and service standards information on each TNSP for the 2007-08 period.

Ferguson outlines Australia’s energy security vision

Federal Energy Minister Martin Ferguson is travelling to Europe and the Middle East where he will outline Australia’s vision of energy security for the 21st century and call for greater urgency in efforts to deploy carbon capture and storage technologies.

Ferguson will attend the Carbon Sequestration Leadership Forum in London and the International Energy Agency Governing Board Ministerial Meeting in Paris. He will also visit Qatar to inspect the largest LNG and gas-to-liquid facilities in the region.

“Australia has an opportunity to help our trading partners meet their growing energy needs through the reliable supply of coal, LNG and uranium. At the same time, Australia’s commitment to cleaner energy technologies is being acknowledged internationally, especially our leadership role in carbon capture and storage as well as our significant funding of renewable energy technologies,” says Ferguson.

“Australia recognises CCS and renewable energies are not competing alternatives, which is why we are investing billions of dollars in both the commercialisation of new solar, geothermal, wave and energy storage technologies, and the lowering of emissions from traditional fossil fuels.”

The Third Ministerial Conference of the CSLF will be held in London on 12 and 13 October where Ferguson will lead the discussion on knowledge sharing. He will then travel to Paris for the IEA Governing Board meeting where he will update ministers on global progress in the deployment of CCS.

Ferguson intends to inform his ministerial counterparts that while Australia is committed to taking a leadership position on CCS, he will warn that the global response to climate change will be ineffective without accelerating the development and deployment of CCS technology on a widespread, commercial scale.

“Demand for coal worldwide has been growing faster than any other energy source so a successful global response to climate change depends upon our capacity to deploy CCS at industrial scale,” says Ferguson.

“Australia has the most comprehensive CCS regulatory framework in the world, we have released the world’s first CO₂ storage acreage for competitive exploration bids, we are working with China on a range of practical project work, we are investing billions of dollars in CCS projects and we have funded the Global CCS Institute to accelerate the uptake of CCS.”

Ergon Energy helps Townsville with energy savings

Ergon Energy’s Townsville: Queensland Solar City project on Magnetic Island has reduced the community’s electricity use by six per cent in its first full year of operation.

Solar City Manager Ian Cruickshank has applauded local residents for their efforts to significantly reduce their energy use across the island, resulting in savings on customers’ electricity bills and environmental benefits through a reduction in greenhouse gas emissions.

“The innovative Magnetic Island Solar Suburb initiative is effectively changing the shape of electricity demand on the island,” Cruickshank says.

“The unique combination of solar power, demand management initiatives, smart metering, energy efficiency and a focused approach to community engagement are all helping to create a sustainable energy future.”

Cruickshank says Magnetic Island residents have embraced the project, with around 800 householders and businesses signing up to receive free energy assessments.

“As a result of this knowledge, our customers are seeing real savings through a reduction in the amount of electricity they are using, and importantly, through savings on their electricity bill.

“We are now generating around 200 kW of renewable solar energy through solar systems hosted by local residents, which is good news for customers, good news for the environment and good news for Ergon Energy, which can defer investment in the distribution network.”

Building on a range of initiatives already underway, Ergon Energy has partnered with Australian company Energetique for an electric vehicle trial, which will help provide an understanding of the future electricity needs of the community.

“Ergon Energy is committed to being an electricity supplier that is affordable, dependable and smart,” Cruickshank says.

“The Solar City project is providing us with a platform to investigate innovative ways to meet this commitment and supply electricity to our customers in a sustainable manner.”

The first sod for a new Solar Park on Magnetic Island has also been turned. Once completed, the park will generate about 100 kW of renewable solar energy, capable of supplying the electricity needs of 18 homes for a year.

“The Townsville: Queensland Solar City consortium enjoys a collaborative working relationship with the Australian Government through the Solar Cities

program, which brings together all levels of government, industry, business and local communities to trial sustainable energy solutions.”

Cruickshank says he is confident the continued roll-out of initiatives from all consortium partners will ensure the Solar City project continues to change the way people think about and use energy, now and into the future.

Long-term renewable energy goal for Bass Strait islands

Tasmanian Premier David Bartlett says the government has set a long-term goal for renewable energy to replace diesel energy on the Bass Strait Islands, following the establishment of the Tasmanian Renewable Energy Industry Development Board, to be chaired by the Hon Peter Rae AO.

“Today I am announcing the first priority of TREIDB will be to investigate options for increasing the penetration of renewable energy on Flinders and King Islands,” says Bartlett. “This is a positive step forward in reducing the millions of litres of diesel burnt on the islands every year.”

Bartlett says the Bass Strait Islands have a number of natural resource advantages that make them very attractive as a test bed for renewable energy technology.

“For Tasmania climate change is not just a challenge, but a significant opportunity for economic growth. There are a number of exciting projects in wind, wave and tidal power at various stages of development,” he says.

“The TREIDB will build on the existing work being progressed and make recommendations on how to ensure a more sustainable energy base for these islands.”

Bartlett says the TREIDB will work with the government to “take Tasmania from being a national leader in renewable energy, to a global leader”. The Bass Strait Islands will be the first beneficiaries of the development work.

New hydro plant for Victoria’s Sugarloaf Reservoir

The power of water flowing over the Great Dividing Range to Victoria’s Sugarloaf Reservoir will be harnessed to create renewable energy, according to Melbourne Water.

A hydro electricity plant is being constructed adjacent to where water comes out of the Goulburn-Sugarloaf Pipeline on the northern side of the Sugarloaf Reservoir.

Melbourne Water General Manager of Asset Planning Dr Paul Pretto says the new hydro plant will recover energy used in pumping water over the Great Dividing Range to the reservoir.

“This plant will recover an estimated 40 per cent of the energy required to power the two pumping stations which are needed to move water from the pipeline across steep terrain to Melbourne,” Dr Pretto says.

“The rest of the power for the two pumping stations will be offset through the purchase of energy from renewable sources, such as wind generators, meaning the Sugarloaf Pipeline would have a zero net impact on carbon emissions.”

The Sugarloaf hydro electricity plant will be the ninth installed in the water supply system, with others located at Cardinia and Thomson Reservoirs and six mini-hydro plants at other reservoirs in Melbourne.

The nine plants will create up to 51,000 MWh per year of renewable energy.

“Melbourne Water uses a vast amount of electricity to move water and sewage around the system and we feel that we have an implicit obligation to lower our greenhouse gas emissions and source our energy from renewable sources.”

Melbourne Water has already succeeded in reducing its greenhouse emissions by 50 per cent and has set a target of achieving zero emissions by 2018.

The Sugarloaf Hydro Power Plant is being constructed by Hydro Tasmania and is due to be completed once the Sugarloaf Pipeline starts operating in 2010.

Energy efficiency ratings for TVs and light globes

New national energy efficiency standards for televisions and some lighting products are set to help Victorian households cut their electricity use and power bills, according to Victorian Energy Minister Peter Batchelor.

The new measures, approved by the Ministerial Council on Energy, mean that from 1 October televisions will have to comply with minimum energy performance standards (MEPS).

It also will also be mandatory for televisions to carry an energy rating label at point of sale that indicates their level of energy efficiency on a scale of one to six stars.

Batchelor says that under the regulations, manufacturers and suppliers will have to make, import and sell televisions and lighting products that meet minimum energy performance standards, which would drive less efficient models off the market.

In 2008 Australians purchased 2.4 million televisions, adding to the stock of about 18 million televisions already in operation across the country.

“Television electricity consumption has increased by more than 300 per cent over the past 20 years, with TVs now the fourth largest user of electricity in Australian homes,” says Batchelor.

“Today, televisions use more electricity than washing machines, clothes dryers and dishwashers combined and without these new regulations, they threaten to become the appliance using the most electricity in our homes by 2020.”

He says the new energy rating labels will, for the first time, allow consumers to assess the energy efficiency rating of televisions prior to purchase. For example, a medium-sized four-star television will save about 490 kilograms of greenhouse gas a year in comparison to a one-star TV.

From 1 November conventional incandescent light globes, compact fluorescent lamps and the transformers used with 12-volt halogen lighting will also have to comply with MEPS.

Batchelor says the new lighting MEPS is not a ban on all incandescent light globes, and households will not be required to use compact fluorescent lamps, but that switching to compact fluorescent lamps where possible will maximise energy and greenhouse savings.

“A third of Victoria’s energy is used in the home with about nine per cent of household greenhouse gas emissions from lighting,” he says.

“Electricity for lighting costs households about \$150 every year... If every Victorian household replaced just one conventional incandescent globe with an energy efficient compact fluorescent lamp, the savings would be around six billion balloons of greenhouse gas a year across the state, with an annual saving on power bills of up to \$19 per bulb.”

Substation copper thieves warned against break-ins

New South Wales Energy Minister John Robertson is warning would-be copper thieves to keep out of electrical substations and depots or they will be caught and charged or face serious injury, following a number of recent break-ins.

The break-ins come as scrap metal prices for copper have almost doubled since January. Over the past month, there have been four thefts at EnergyAustralia works depots in the Hunter region and three break-ins in Sydney.

“Alarmingly, the three sites broken into in Sydney’s west contained live electrical equipment,” says Robertson.

“As copper prices rise, thieves are becoming more brazen in their attempts to steal it. They’re entering live electrical sites where the risks are extreme and the consequences deadly.

“Electricity at high voltages can arc without warning and this makes these sites volatile and highly dangerous.”

Robertson says that NSW Government-owned energy companies are going to great lengths to keep thieves out by ramping up security at all levels, including through the use of high-tech surveillance equipment, which has reduced the number of break-ins to energy sites by half.

Last week, a 44-year old man was charged and sentenced to a maximum of 18 months’ jail after breaking into the Muswellbrook electricity depot at night on 20 September. The man was caught filling a stolen utility with \$32,000 worth of equipment.

There have been 61 people charged with theft of EnergyAustralia property over the past three years, following a multi-million dollar security upgrade to clamp down on break-ins.

Forty incidents of copper theft were recorded across the EnergyAustralia network in 2008-09, compared to 92 incidents of copper theft in the first nine months of 2007-08.

The NSW Government has invested \$90 million in security upgrades over the past five years, including a \$53 million upgrade of live yard security fencing at substations, more than \$20 million spent on new security features at major substations and more than \$1 million on replacing exposed network equipment with lockable kiosk substations.

“Another \$16 million is also being spent over the next five years to deliver even further upgrades to major energy sites and equipment,” says Robertson. “These measures are stopping thieves in their tracks and there are more upgrades to come.”

Police have laid charges in relation to one Sydney break-in and are investigating persons of interest in relation to the other two.

In brief

Parliamentary committee to look at ETS impacts in Qld

A parliamentary hearing is to review the Queensland Government's energy efficiency programs and consider the future impacts of a carbon trading scheme on the state. Environment and Resources Committee Chair Carryn Sullivan says using energy more efficiently at home, on the road and in business remains by far the best option for people to do something about climate change, and says that while every level of government now has plans and strategies and funding programs in place to help, many people are not taking advantage of the opportunities being offered to them. She says the committee wants to know why. “As much as half the savings in greenhouse gas emissions we need to achieve as a state by 2050 could be met through energy efficiency improvements,” says Sullivan. “Improving energy efficiency is about making homes and buildings less dependent on air conditioning to be comfortable, and choosing energy efficient lighting and appliances that cost less to run,” she says. “In business and industry energy efficiency can also involve investing in new plant and equipment that produce the same or more output with less energy. Government has a vital role to play in promoting the benefits of energy efficiency and helping people and businesses to make it happen.” The committee will hear evidence from the Office of Clean Energy, the Department of Employment, Economic Development and Innovation and the Department of Infrastructure and Planning, among others, and will report to Parliament in November.

ENERGEX completes \$14.5 million upgrade

ENERGEX has completed a \$14.5 million power upgrade of Brisbane's inner southern suburbs. More than 15,000 local homes and businesses are benefiting from the upgrade which includes linking the Tennyson, Moorooka and Annerley substations via a 33 kV underground cable and associated works. The new work bolsters power supply to suburbs including Moorooka, Yeronga, Tennyson, Dutton Park, Yeerongpilly, Annerley, Fairfield, Tarragindi and Greenslopes. ENERGEX Network Program Group Manager Kevin Ball says the new upgrades have greatly improved local power reliability and will help meet the growing demand for electricity in the area. “Brisbane's inner south has seen significant power consumption increases in the past few years and that growth is set to continue,” he says. “These interconnecting upgrades will allow the three substations to work together to provide more power capacity to the area while providing a more robust supply. The new cables will also give

ENERGEX technicians more options to reroute and restore power faster should an unexpected interruption occur on the local network." The project is part of a record \$4 billion-plus five-year capital expenditure program currently being undertaken by ENERGEX.

Aurora Energy restores power following storm damage

Following widespread outages to Aurora Energy's customers in north-west Tasmania, power has been restored two days ahead of expectations and a week after a storm caused the most widespread damage to Tasmanian electrical assets in decades. Restoration included several kilometres of poles and lines replacement. Aurora Network Division General Manager John Devereaux has thanked customers for their patience and acknowledged the effort of Aurora crews from around the state, including as far away as Flinders Island, who joined in the restoration work. "People who have worked in the electricity distribution system in Tasmania for more than three decades have told me they have never seen such widespread damage. It was very physically demanding work, not to mention the disruption of our people relocating away from their families for up to five days. We will now turn our attention to the backlog of planned work around the state that was put on hold during the restoration efforts," Devereaux says. About 140 Aurora workers temporarily relocated to the region during the week, including about 20 crews of line workers from other parts of the state. More than 40,000 customers were without power across Tasmania at the height of the storm on Sunday, 27 September 2009.

Queensland solar hot water system program begins

Installations under the Queensland Government's Solar Hot Water Program have commenced following the appointment of the program's first supplier. Energy Minister Stephen Robertson says the government has entered into a Standing Offer Arrangement with the supplier, while negotiations continue with other shortlisted suppliers. "We aim to roll out up to 200,000 solar hot water systems over the next three years for just \$500 for eligible Queenslanders and \$100 for eligible pensioners. Our program can not only save Queenslanders up to \$300 a year on a typical electricity bill but will also contribute to our Toward Q2 goal of reducing Queensland's carbon footprint by one-third by 2020." The program relies on the Commonwealth's solar rebate and to be eligible applicants must be able to claim this Federal assistance. "This program is a major industry development initiative designed to help industry meet the future demand that will be created by the phase-out of electric storage hot water systems from 2010. With the first supplier on board, we are now in a position to begin matching successful applicants with installers in their local area," says Robertson, adding that the program aims to triple the current rate of solar hot water installations in Queensland and share this opportunity for growth across a panel of suppliers. The Invitation to Offer process will be regularly re-opened to provide companies with new opportunities to become involved in the program, and the Office of Clean Energy is investigating ways of linking smaller installation businesses with suppliers to help spread work across the industry. "The Office of Clean Energy has already received more than 10,000 completed applications and more than 40,000 registrations of interest from Queenslanders wanting to participate in the program," Robertson says.

\$3.8 million to help business adapt to climate change

Retrofitting equipment to utilise waste heat for production is among 12 projects to be funded under the latest round of the Federal Government's Re-tooling for Climate Change, which offers dollar for dollar grants from \$10,000 to \$500,000 to help small and medium manufacturers reduce the environmental impact of their production processes. Acting Innovation Minister Dr Craig Emerson has announced the 12 applicants to receive grant offers totalling \$3.8 million under

the third round. "Re-tooling both tackles climate change and puts manufacturers on a more sustainable footing," says Dr Emerson. "In this round, the activities supported include process and plant upgrades that reduce energy and water consumed in manufacturing, capture and treatment of storm water for use in manufacturing, and improved energy monitoring systems." Over half of the successful grantees are from regional locations.

EnergyAustralia commences \$25 million network upgrade

EnergyAustralia has commenced work on a \$25 million upgrade to the electricity network around Hunters Hill in Sydney to help to boost power supplies to 17,000 homes and businesses in the area. The project includes building a new, architecturally-designed substation building, maintaining the existing heritage building and placing some overhead powerlines underground. EnergyAustralia General Manager Engineering Geoff Lillis says the project includes relocating some 11 kV underground cables on the substation site, relocating some 66 kV overhead power lines underground, building a vault for 66 kV cables to connect to the substation, removing part of the existing substation and building a new modern building in Hunters Hill, removing 10 power poles and installing two new ones to connect the overhead and underground network and replacing the roof of the existing substation to maintain its heritage. Work on this project will be completed in stages. The cable work has started and is expected to be completed in early 2010, while work on the substation buildings is due to start in early 2010 and is expected to be completed in 2012.

Ergon introduces biodiesel electricity generation

Biodiesel for electricity generation in western Queensland towns will be introduced to reduce carbon emissions by up to 330 tonnes per annum, according to Ergon Energy. The electricity supplier will introduce a biodiesel blended fuel across five outback Queensland townships not connected to the electricity grid, through a contract with fuel supplier Caltex. The deal will potentially pave the way for further reductions in emissions from diesel-based generation used at most of Ergon Energy's 33 remote power generation sites. Carbon dioxide reductions from the biodiesel blend will equate to around 360 MWh of carbon-free electricity. The generation sites for the towns of Boulia, Bedourie, Birdsville, Windorah and Jundah will be fuelled with the biodiesel blend. Ergon Energy will monitor the introduction of the B5 fuel (five per cent biodiesel and 95 per cent crude oil-based diesel) at these sites and is planning to stage the introduction of biodiesel blended fuels to all its remote generation sites – subject to fuel availability – over the next few years. "Using biofuel represents just one of the important steps taken by Ergon Energy towards addressing concerns over emissions from remote electricity generation," Ergon Energy Chief Executive Ian McLeod says. "It ticks all the boxes of increasing usage of renewable technologies, helping develop emerging industries and supporting the principles of sustainable business practice." Ergon Energy generation experts will monitor the effectiveness of the B5 diesel blend at the generation sites with a view to trialling a B20 blend (20 per cent biodiesel) or even B100 (100 per cent biodiesel) fuel at other locations in the future. Ergon Energy already utilises other renewable energy options at a number of its remote generation sites, including solar concentrator technology at Windorah, geothermal generation in Birdsville and wind generation in the Torres Strait. "Biofuel is another string to our bow in terms of tackling emissions issues," explains McLeod, "and we are doing everything in our power to explore real solutions in this area."

Western Power encourages switching program

As part of the Green Town Project, Western Power has extended its fuel switching program for residents in the Denmark and Walpole areas. Residents can claim a \$400 rebate from Western Power when they switch from an electric hot water system to a gas boosted solar hot water system. According to Western Power, replacing an electric hot water system with a gas boosted system can save households up to \$500 on their annual electricity bill and four tonnes of greenhouse gas per year. Western Power Green Town Manager Andrew Blaver says that the program has been running successfully for four months, and because funds are still available for the program, Western Power has decided to extend the rebate until 30 April 2010. "Together with current State and Federal rebates residents can save up to \$4,000 off the price of a new system. On average a new system pays for itself in about three years," says Blaver.

In review

IRENA treaty ratification

The Federal Government is seeking public comment on Australia's move to ratify the International Renewable Energy Agency Treaty. As a treaty level agreement, the government must submit this action for consideration to the Joint Standing Committee on Treaties of the Australian Parliament. An important step in this process is undertaking a public consultation process. Individuals, businesses or groups interested in making a submission on Australia's move to ratify its commitment to IRENA are encouraged to do so **by 13 October 2009**.

For further information, see <http://bit.ly/1acViy>. Written submissions may be posted to the Department of Resources Energy and Tourism or sent by email to IRENA@ret.gov.au.

Queensland domestic gas market security of supply

The Queensland Government has released a consultation paper on the state's domestic gas market security of supply. The paper identifies two options for providing additional certainty about the availability of gas to the domestic market, and its price, in the presence of the projected LNG developments.

Option 1 – application of a reservation policy requiring a percentage of gas production to be supplied to the domestic market.

Option 2 – development of a reserve of potential gas-producing land which may be released as required to ensure supply. Depending on supply constraints identified in regular market assessments, this land may be conditioned such that it is only available to the domestic market.

The second option is a more light handed adaptive approach to dealing with supply constraints. This option involves the enhancement of the existing tenure management framework, to ensure that gas exploration and production tenure is not "banked", and the release of new tenure in light of the supply/demand balance including the conditioning of tenure, to require local supply if necessary.

The government has not identified a preferred option and encourages interested parties to provide submissions on the merits and consequences of both alternatives. Written submissions should be posted to the Queensland Department of Employment, Economic Development and Innovation or emailed to LNG.team@deedi.qld.gov.au.

The consultation paper is available at <http://tinyurl.com/kq88qn>.

The closing date for providing comment on this consultation paper is **15 October 2009**. Further enquiries can be directed to Mal Hellmuth by phoning 07 3898 0437.

Directlink pass through application

The Australian Energy Regulator has received an application from the APA Group requesting approval to pass through costs associated with an insurance event, which occurred on the Directlink transmission asset. The application, including a notice of proposed pass through, is made in accordance with the pass through rules of the AER's 2006 revenue cap decision for Directlink. The revenue cap decision containing the pass through rules for Directlink is available at www.aer.gov.au.

The AER will assess the application and supporting material under the Directlink pass through rules. Interested parties are invited to make written submissions on the APA Group's pass through application **by 23 October 2009**. Submissions may be sent electronically to aerinqury@er.gov.au.

AEMC draft rule on National Electricity Amendment

The Australian Energy Market Commission is seeking written submissions from interested stakeholders on a draft determination and draft National Electricity Amendment (Bid and Offer Validation Data) Rule 2009.

Submissions on the proposal must be received **by 23 October 2009** at submissions@aemc.gov.au and must include the Project Reference number in the title. Submissions should be provided in accordance with the AEMC's *Guidelines for making written submissions on Rule change proposals*.

Light regulation application for Central West Pipeline

The National Competition Council has received an application from APT Pipelines (NSW) Limited for a light regulation determination for its covered Central West Pipeline, which transports gas from Marsden on the Moomba Sydney Pipeline mainline to Forbes, Parkes, Narromine and Dubbo in the central west of New South Wales. The application and related documents can be reviewed at <http://www.ncc.gov.au> and NCC is inviting written submissions on the application.

The closing date for submissions is 5.00pm on **28 October 2009**. Guidelines on light regulation and on making a submission are available on the website. After considering submissions, the NCC will prepare a draft decision, provide a further opportunity for public comment on the draft decision and issue its final decision. Queries may be directed to Andrew Felkel 03 9285 7474.

Total Factor Productivity design discussion paper

The Australian Energy Market Commission has released its Total Factor Productivity design discussion paper and will be holding workshops on this matter. One workshop will focus on the electricity sector and will take place on Monday 28 September 2009. The second workshop, on Friday 2 October 2009, will focus on the gas sector. Both workshops will be held at the Rydges World Square in Sydney. All stakeholders are invited to attend these workshops. Registrations for the workshops close on 18 September 2009. See <http://tinyurl.com/nszrey> for more details.

Submissions on the discussion paper are required **by 30 October 2009**.

Service target performance incentive scheme

The Australian Energy Regulator has released for consultation proposed amendments to its service target performance incentive scheme to apply to electricity distribution networks. The proposed amendments are designed to improve the clarity, effectiveness and operation of the STPIS and to increase its flexibility, most notably with respect to determining the major event day boundary. Interested parties are invited to provide written submissions to the AER on the proposed amendments by close of business **30 October 2009**.

Relevant information including the amended STPIS and explanatory statement is available at <http://www.aer.gov.au/content/index.phtml/itemId/709341>.

Written submissions can be sent electronically to aer inquiry@ aer.gov.au. Inquiries may be directed to Network Regulation South Branch on 03 9290 1436.

COAG review of RET issues

The Council of Australian Governments Renewable Energy Sub Group is conducting a review of specific RET issues, following the passage of the legislation to implement the expanded national RET scheme by the Commonwealth Parliament on 20 August 2009. Specifically, the review will examine: some of the eligibility provisions of the RET for new small-scale technologies as well as heat pumps; the 'self-generation' provisions relevant to off-grid resource projects; and the feasibility of introducing a measure to provide support to small-scale off-grid renewable generation within the RET. Three discussion papers on these issues are available at <http://www.climatechange.gov.au/renewabletarget/consultation/index.html>.

Interested stakeholders are invited to make submissions **by 30 October 2009**, however earlier submissions are welcomed in order to inform the review as soon as possible.

Regulatory investment test for transmission issues paper

Under the National Electricity Rules, the Australian Energy Regulator must publish the regulatory investment test for transmission (RIT-T) by 1 July 2010. The RIT-T will replace the existing regulatory test for electricity transmission investments and will commence on 1 August 2010. The existing regulatory test will continue to apply to projects which address a need on the distribution network. The AER has prepared an issues paper as the first step in its consultation process in developing the RIT-T and application guidelines. The issues paper is available on the AER's website via <http://bit.ly/RIT-T>. Interested parties are invited to review the matters raised in this issues paper and provide written submissions.

Any submissions must be received **by 13 November 2009** and should be addressed to: Tom Leuner, General Manager Markets, Australian Energy Regulator, GPO Box 520, Melbourne Vic 3001. Alternatively, email AERInquiry@aer.gov.au.

Tax Office reviews effective life of solar generation assets

The Australian Tax Office has commenced a review of solar electricity generation assets with a view to making new effective life determinations. The review aims to ensure the Commissioner's effective life determinations cover all of the assets commonly used today, and reflect current industry practices and expectations. The review will principally cover assets used in the solar electric power generation industry, not including solar hot water systems. The ATO expects the review to be completed within 12 months, with new effective life determinations applying from 1 July 2010.

More information on the review process is available at <http://www.ato.gov.au/corporate/content.asp?doc=/content/00214793.htm>.

Participation in the review process is voluntary and those interested in participating in the review can contact Anne Minney on 07 3213 5487 or email anne.minney@ato.gov.au.

International

FERC approves US\$25 million non-compliance civil penalty

The US Federal Energy Regulatory Commission has approved a US\$25 million civil penalty as part of a settlement with Florida Power & Light Co stemming from a February 2008 blackout that lost power for millions of consumers in South Florida for several hours. FPL has also agreed to a broad program of remedial measures to enhance its system and operations to prevent another such occurrence. "Today's settlement demonstrates the high priority the commission places on electric reliability," says FERC Office of Enforcement Director Norman Bay. "We take very seriously the reliability mission Congress handed to us in Energy Policy Act of 2005 in order to protect consumers. The message to the industry is clear: compliance with the standards is critical." The settlement represents FERC's first civil penalty assessment under its Electric Reliability Standards and its first joint enforcement effort with the North American Electric Reliability Corporation, the FERC-designated Electric Reliability Organisation that oversees daily enforcement of the reliability standards. Under the Energy Policy Act of 2005, which provides a framework for enforceable reliability standards, there is provision for civil penalties of up to US\$1 million per violation per day. FERC announced its investigation into the Florida blackout shortly after the 26 February 2008 event in which a large portion of peninsular Florida lost power for several hours. The event was caused by a fault at a substation on the FPL system in west Miami that rapidly cascaded through the system, disabling dozens of transmission lines around the state. Of the civil penalty, FPL will pay US\$10 million to NERC to offset the budget charges it assesses industry members. FPL also will pay US\$10 million to the US Treasury and another US\$5 million for extra reliability enhancements to its system that go beyond the minimum requirements of a FPL program of specific compliance improvements. These additional compliance improvements called for by the settlement require FPL to enhance its training procedures and management processes, perform upgrades and add new protections to its system and improve its compliance program and transmission operations.

Pilot project captures 90 per cent of carbon dioxide

We Energies, Alstom and the Electric Power Research Institute have announced that a pilot project testing an advanced chilled ammonia process has demonstrated more than 90 per cent capture of carbon dioxide from the flue stream at a coal-fuelled power plant in the US state of Wisconsin. Testing at the pilot facility, using a 1.7 MW (electric) slipstream from the plant, began in early 2008 and will conclude later this year. The project confirms the predicted performance of the chilled ammonia carbon capture system at an operating power plant. It achieved key research metrics around hours of operation, ammonia release, CO₂ removal levels and CO₂ purity. In doing so, the project has demonstrated the fundamental viability of the carbon capture technology in real-world conditions such as changes in temperature and humidity, the inevitable starts and stops of a large power plant and the environmental hurdles that go along with using any chemical process. "One of the biggest challenges facing our industry is the development of cost-effective technology that will allow us to capture carbon from the operation of power plants around the world," says We Energies Chair, President and CEO Gale Klappa. Lessons

learned at Pleasant Prairie have already provided critical information for efforts to scale up effective CCS technologies for new power plants and for retrofit to existing plants. A scaled-up 20 MW capture system has been installed at AEP's 1,300 MW Mountaineer Plant, where it will remove an estimated 90 per cent of carbon emissions from the flue gas stream it processes, capturing up to 100,000 tonnes of CO₂ per year. The captured CO₂ will be compressed, pipelined and injected into two different saline reservoirs located 2.4 kilometres beneath the plant site. "This project has been a success. It proved what we needed to know to stay on schedule to commercialise carbon capture technology for new and existing power plants by 2015, a necessary step to meet ambitious climate change targets being proposed by policy makers in the US and around the world," Alstom US President Pierre Gauthier says. "Alstom believes carbon capture, along with energy efficiency and a full portfolio of low carbon technologies including renewable power, will all be needed to achieve urgent CO₂ reduction goals in a timely manner."

State regulators urge caution, cooperation on smart grid

State utility regulators want the US Federal Communications Commission to avoid getting too far along in promoting utility smart grid efforts as part of a national broadband plan and they recommend greater federal-state regulatory cooperation. Investor-owned utilities, meanwhile, are supporting a call for the FCC to increase the amount of broadband spectrum that can be dedicated to smart grid deployments. The Edison Electric Institute, the National Association of Regulatory Utility Commissioners and hundreds of other companies and groups have filed comments with the FCC in response to its early-September notice seeking input on smart grid efforts. Congress, as part of the American Recovery and Reinvestment Act of 2009, has charged the FCC to develop a national broadband plan, including ways to use broadband infrastructure to advance energy independence and efficiency. FCC wants to examine whether current commercial communication networks are sufficient for deploying smart grid technologies. Utilities are using various communication systems as part of their smart grid plans, including public and private wireless systems, along with fibre-optic and broadband-over-power line technologies. But utilities are facing broadband spectrum constraints in the use of private wireless networks, "and find that commercial systems generally are not able to provide for all utility communications requirements, which will increase with the deployment of smart grid technology", EEI says. "The Federal Government has resources the states do not; the states have expertise in the development and implementation of programs the Federal Government lacks. This technology calls for a true partnership," NARUC says, highlighting a smart grid collaborative it has with the Federal Energy Regulatory Commission as a good example of Federal-state cooperation.

Kuwait signs US\$2.7 billion 2,000 MW power deal

US industrial conglomerate General Electric and South Korea's Hyundai Heavy Industries have signed a US\$2.7 billion power plant deal with Kuwait, reports the BBC. The partners plan to complete the 2,000 MW plant, located in the northern town of Subbiya, by 2012, although it will commence generation in 2011. The plant will comprise six gas turbines and six steam turbines. Kuwait has ambitious plans to substantially boost its power supply in coming years. "It is an important step in our plans to boost power capacity to meet continuing demand, which is projected to grow at about eight per cent a year," says Kuwaiti Minister of Electricity and Water Badr al-Shuraian.

EDF considers ownership options for UK distribution

The EDF Group has announced it is initiating a process to evaluate ownership options for its electricity distribution business in the United Kingdom under its program to reduce its net financial debt by at least €5 billion by the end of 2010.

EDF Energy is the largest electricity distribution network operator in the UK. It serves London, the south-east and east of England which together account for 40 per cent of the UK's GDP. EDF Energy is also involved in unregulated networks businesses comprising the development, delivery and management of safe, sustainable and profitable electrical and multi-utility networks for owners of major infrastructures. The evaluation process follows the acquisition of British Energy announced in.

Iberdrola to build €2 million Mexican power lines

Iberdrola Ingeniería, a subsidiary of Spanish energy company Iberdrola, has been awarded a €22 million contract to build electricity distribution infrastructure in the Mexican states of Coahuila, Durango and Chihuahua. The turnkey contract has been awarded by the Mexican federal electricity commission and includes the construction of substations and high-voltage lines. Iberdrola Ingeniería heads up a consortium including Siemens, and the project involves the construction of seven substations with voltages of 115 kV to 13.8 kV and total output of 200 MVA as well as three 115 kV high-voltage lines extending 6.5 kilometres in length. Work is scheduled to last 13 months with completion due in December 2010. The contract consolidates Iberdrola Ingeniería's project work in Mexico and Latin America, where €2,200 million in distribution network, nuclear, renewables and generation projects are being constructed in Mexico, Brazil and Venezuela.

Ofgem reviews protection for vulnerable customers

British gas and electricity regulator Ofgem has reviewed measures that aim to protect vulnerable customers from disconnection and concludes it is largely satisfied with the protections that suppliers have in place. Ofgem says the current Energy Retail Association Safety Net by and large works well and provides welcome additional protection to vulnerable customers. "We are also encouraged by the continued fall in disconnection rates from a high of 30,000 in 1998 to less than 6,000 in 2008 (around 0.01 per cent of customers)," says the Ofgem review. "However, our review also found some areas of weakness and inconsistencies between suppliers that needed to be addressed." Working with the ERA and suppliers, a number of changes to suppliers' processes and to the existing self-regulatory arrangements to help prevent the disconnection of vulnerable customers have been secured. Ofgem highlights a clearer commitment from suppliers to consider a household with children to be potentially vulnerable regardless of the age of the children; the adoption by suppliers of guidance produced by the Money Advice Liaison Group on dealing with customers with mental health problems; the inclusion in the ERA Safety Net of the principle that suppliers can consider disconnection fee write-off for their fuel poor customers; reinforcement of the ERA Safety Net principles to ensure they cover all situations where vulnerable customers might be disconnected for debt, including in mixed business/residential properties, apparently unoccupied premises and cases where the supplier goes to install a prepayment meter but finds they cannot; and a much more rigorous audit process to ensure that suppliers adhere to the Safety Net rules. "But we recognise that however good suppliers' arrangements are, they are not always able to identify vulnerability and on occasions a vulnerable household will be disconnected," says Ofgem.

US DOE accelerates solar technology commercialisation

The US Department of Energy has announced up to US\$87 million will be made available to support the development of new solar energy technologies and the rapid deployment of available carbon-free solar energy systems. Of this funding, US\$50 million comes from the American Recovery and Reinvestment Act. The 47 projects with universities, electric power utilities, DOE's National Laboratories and local governments have been selected to support the use of

solar technologies in US cities, help address technical challenges, ensure reliable connectivity with the electrical grid and train a new generation of solar workers to install and maintain solar energy systems. These projects will help speed the adoption of solar energy nationwide, while supporting development of a skilled workforce and continuing to pursue new scientific breakthroughs to increase the efficiency and lower the cost of solar technologies. "Today's awards are among the many investments made to create new jobs and a clean energy future with solar power. The projects will help accelerate the use of solar energy by residents, businesses and communities, and promote the long-term viability of solar energy by investing in the technologies of the future," says Energy Secretary Steven Chu. The selected projects will help accelerate the commercialisation of solar technologies in an effort to achieve cost-competitive solar electricity by 2015, in addition to developing advanced solar technologies for the future. Projects focus on both technology improvements and the elimination of market barriers to help make solar electricity accessible to a wide variety of consumers.

Calendar of Events

20 to 30 October 2009

esaa is holding a series of member briefings to inform both full and associate members about esaa's work program and promote discussion on policy issues affecting Australia's energy industry. An agenda will be available in early October and added to the on-line registration.

The next round of briefing sessions will be held in PricewaterhouseCoopers offices at the following locations:

- **Brisbane**, Tuesday 20 October, 2.30 pm to 5.00 pm
- **Sydney**, Tuesday 27 October, 9.00 am to 11.30 am
- **Melbourne**, Friday 30 October, 9.00 am to 11.30 am
- **Perth**, date to be advised.

There is no cost to attend. All attendees are requested to register at <http://www.pwc.com.au/events/esaa-briefing-oct09> for security purposes.

20 October 2009

Conferenz is holding **Agenda09: The Energy Roundtable** on 20 October 2009 at the Duxton Hotel Wellington in New Zealand. This one-day intensive event is designed to engage, debate and progress priorities. For more information, visit <http://www.conferenz.co.nz/agenda-09-the-energy-roundtable-3.html>.

28 and 29 October 2009

The Australian Energy Regulator is hosting a breakfast seminar for new starters in the energy industry. This introductory seminar is targeted at industry participants, advisors and stakeholders and is designed to provide newcomers with an understanding of the AER's role in wholesale markets, the legislative framework and the AER's approach to compliance monitoring and enforcement of the national wholesale electricity and gas rules.

The free seminars will cover the:

- AER's recently published compliance and enforcement statement of approach
- legislative framework and rule change process
- AER's risk assessment approach
- AER's compliance mechanisms including quarterly 'targeted provision' compliance work and audits

- AER's Quarterly Compliance Reports and
- AER's enforcement powers including infringement notices.

While many compliance managers and industry participants will already be familiar with this material, the seminars provide an opportunity for those who are new to the energy industry to understand the role of the AER in monitoring and enforcing the national energy arrangements.

The seminars will be run from the AER/ACCC offices in the following locations on: Wednesday, 28 October in Melbourne from 9 am to 11 am (EST) as well as Sydney and Hobart via videoconference; and, on Thursday, 29 October in Adelaide from 9 am to 11 am (EST) with Brisbane via videoconference.

Places are limited. Please register your intention to participate by sending an email to dominique.chivers@aer.gov.au by 8 October 2009. Registered parties will be provided with final details in due course.

28 to 30 October 2009

The Electric Energy Society of Australia will be holding its annual conference at the Powerhouse Museum in Sydney from 28 to 30 October 2009. Focusing on managing the winds of change, **Energy New South Wales 2009** topics will include power quality issues and the need to satisfy the customer's expectations, implementing embedded generation into the distribution networks, large ambitious projects and 'back to the future' – smart networks progress to date. There will also be sessions on climate change and its impact on networks, smart energy meters – 'a link to intelligent networks?', asset management/switchgear and transformers, and, safety and communications – 'new challenges and solutions'. A final session will consider recovery from large-scale disasters – 'what have we learnt?' Please refer to the EESA website for program updates at www.eesa.asn.au.

Register on line at www.tmm.com.au. For further details, contact The Meetings Manager by emailing eesa@tmm.com.au or phoning 02 9810 7322.

29 October 2009

The Australian Energy Market Operator will hold the **Australian Electricity Market Forum No.2** on Thursday 29 October 2009, convened from Sydney to Melbourne, Canberra, Hobart (9:30 am to 11:00 am EDST), Brisbane (8:30 am to 10:00 am EST) and Adelaide (9:00 am to 10:30 am CDST). The forum aims to keep stakeholders well informed of energy market issues and developments.

The agenda features:

- An Overview of the Wholesale Short Term Trading Market in Gas (SA/NSW) referred to as the STTM project
- Reliability Panel: Annual Electricity Market Performance Review - Reliability & Security 2009 Report
- Updates on recent National Electricity Market developments including:
 - NEM Congestion Information Resource Project
 - NEM Adequacy Assessment Projection
 - NEM Reclassification of Non Credible Contingency due to Lightning.

RSVP by Monday 26 October 2009.

To assist with venue and catering arrangements please register names and preferred venue of attendance by emailing events@aemo.com.au.

23 to 28 May 2010

PowerChem 2010, the biennial **Power Station Chemistry Conference** hosted by the Australian Power Institute will be held from 23 to 28 May 2010 at Crowne Plaza Pelican Waters in Caloundra, Queensland. The conference will focus on optimising chemistry in challenging economic times. Conference sessions/themes include cycle chemistry/HRSG, water purification, water management, carbon accounting and impacts of major plant incidents.

Keynote speakers include Jim Mathews from the Electric Power Research Institute (US); Barry Dooley of Structural Integrity (US); Geoff Bignold from GJB Chemistry Power (UK); Harry Schaap of the National Generators Forum; and subject to final confirmation, Stephanie Marais of ESKOM (South Africa).

For more information, contact The Meetings Manager by phoning 02 9810 7322 or emailing meetings@tmm.com.au.

Jobs on Offer

List industry jobs

esaa Full Members are invited to submit industry-related employment opportunities. This is a complimentary service. Email notices to newseditor@esaa.com.au by close of business Thursday.

General Manager Strategic and International

The Energy Supply Association of Australia (esaa) is the peak body representing electricity and downstream gas supply businesses in Australia.

As part of the executive group and reporting to the Chief Executive Officer the occupant of this new position will be a key contributor to the thought leadership and strategic policy development activity of the Association.

The position is primarily responsible for advising the Association's executive group on emerging medium and longer term strategic policy issues and challenges and developing appropriate fact-based options to address these. The position will marry international and domestic policy developments in energy markets, environmental objectives and technology development activities to inform the Australian stationary energy industry on emerging issues and key priorities for strategic policy attention.

Degree qualified in economics, commerce or business or possessing direct relevant industry experience, you will have an advanced appreciation of energy sector related policies and issues in relevant multilateral, regional and national fora, extensive, high level experience in the development of strategic policy, sound oral and written communication skills as well as the ability to interact with representatives of all levels of business and government.

To apply for this position, you should first obtain a position description, by contacting Marita Hodges on 03 9670 0188. Please email your application addressing each of the essential attributes for the position to recruitment@esaa.com.au by Friday 30 October 2009. Should you wish to make further enquiries after obtaining the position description, please contact esaa CEO Brad Page on 03 9670 1017. A competitive remuneration package will be negotiated with the successful candidate.

Energy & Greenhouse Policy Adviser

The Energy Supply Association of Australia (esaa) is seeking an Energy & Greenhouse Policy Adviser to support the development of esaa's energy policy and advocacy work.

Reporting to the Policy Development Manager, the successful applicant will be responsible for the preparation of high level briefing papers and submissions, researching and analysing policy developments and providing advice on a range of energy and greenhouse policy issues. Experience in the analysis of energy and carbon markets is highly regarded.

Degree qualified in either economics, law or engineering or possessing direct relevant industry experience, the successful candidate will have sound oral and written communication skills as well as the ability to interact with representatives of all levels of business and government.

To apply for this position, please email recruitment@esaa.com.au. For further information or to obtain a position description, please contact Marita Hodges on 03 9670 1017. A competitive salary will be negotiated with the successful candidate.

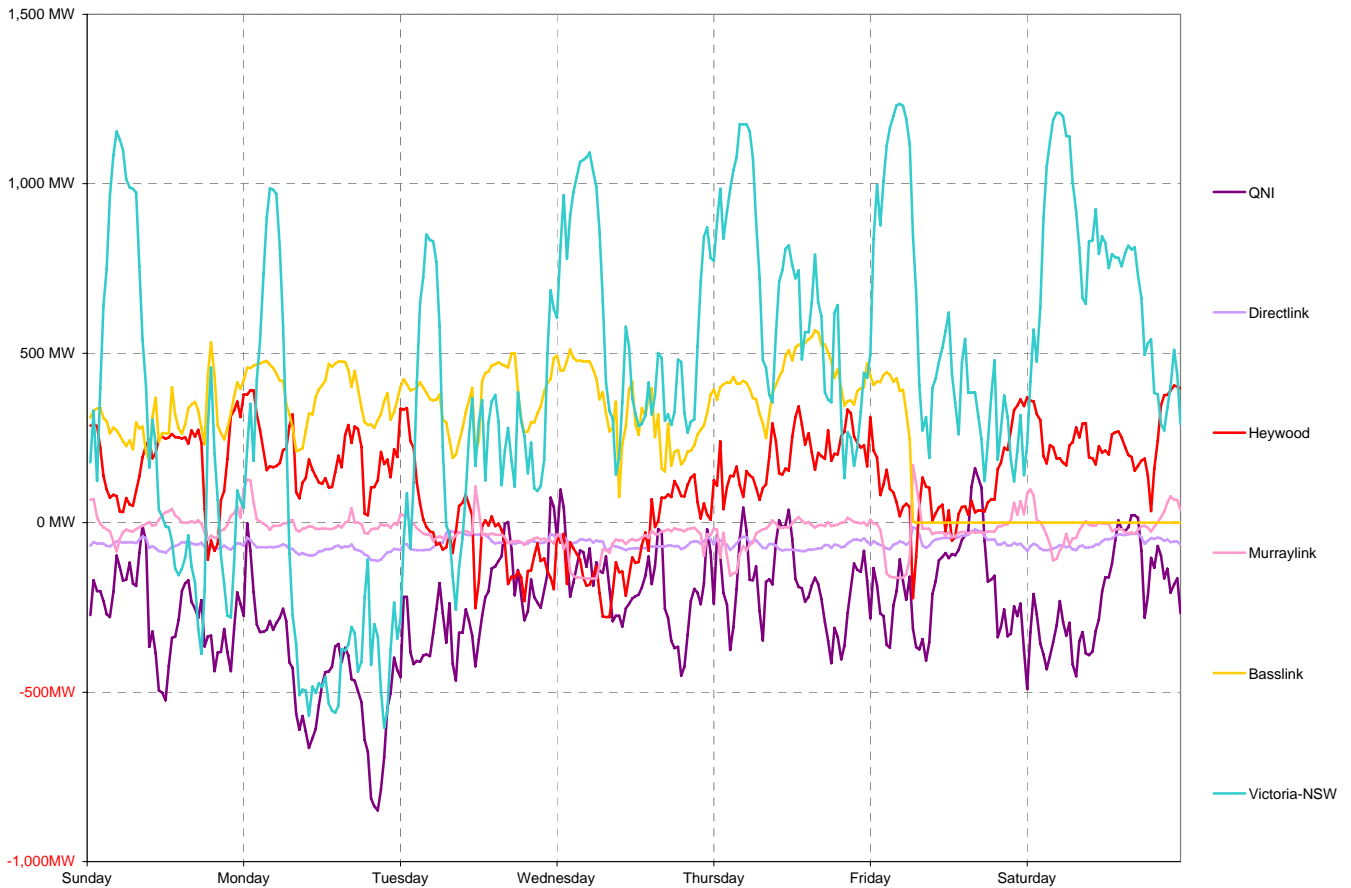
National Electricity Market Report

Week 40 Ending Saturday 03-Oct-09

Daily Inter-Regional Energy Flow

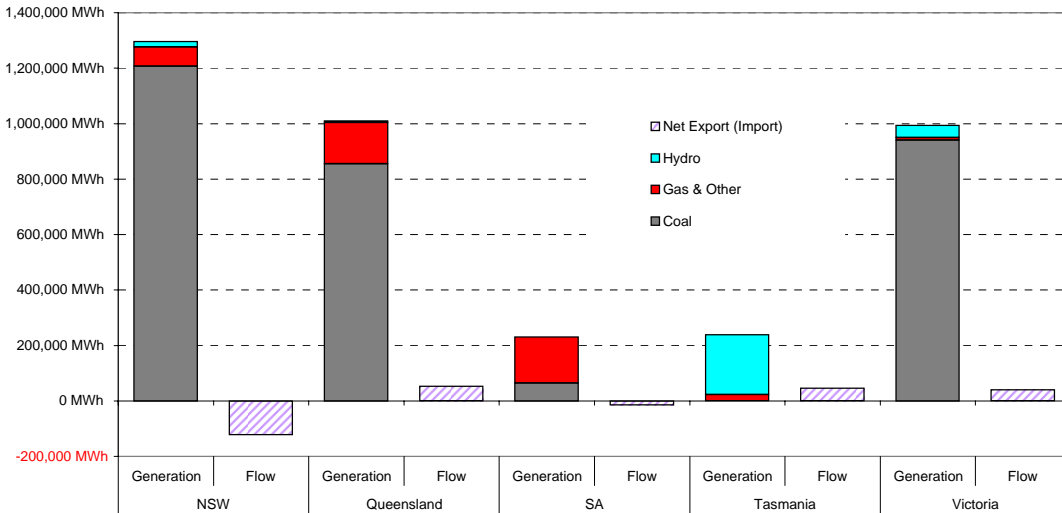
	Daily Net Exports (or Imports)							Weekly Total
	Sunday	Monday	Tuesday	Wednesday	Thursday	Friday	Saturday	
For the Current Week								
NSW	-14,395	-9,887	-13,781	-19,919	-21,654	-19,037	-24,133	-122,803
Queensland	8,058	13,040	7,065	6,068	5,989	5,906	6,679	52,804
South Australia	-4,136	-4,566	1,622	2,856	-4,060	-1,608	-5,810	-15,700
Tasmania	7,356	9,164	8,876	7,832	10,332	2,377	0	45,936
Victoria	3,117	-7,751	-3,782	3,163	9,393	12,362	23,264	39,764
MWh Change from Same Week Last Year								
NSW	17,456	10,749	-856	217	-4,126	9,256	-3,324	29,373
Queensland	-5,101	1,122	-5,782	-6,191	-7,563	-12,447	-7,943	-43,904
South Australia	-5,455	-4,044	3,219	-3,457	-5,217	-3,415	-6,652	-25,018
Tasmania	10,002	12,779	10,588	9,472	11,831	2,487	-308	56,850
Victoria	-16,903	-20,606	-7,169	-42	5,075	4,119	18,226	-17,301
For the Same Week Last Year								
NSW	-31,851	-20,636	-12,925	-20,136	-17,528	-28,293	-20,809	-152,176
Queensland	13,159	11,918	12,847	12,259	13,552	18,353	14,621	96,708
South Australia	1,319	-522	-1,597	6,313	1,157	1,807	842	9,318
Tasmania	-2,646	-3,615	-1,712	-1,641	-1,499	-110	308	-10,915
Victoria	20,019	12,855	3,387	3,205	4,318	8,243	5,038	57,065

Interconnector energy flow throughout the week

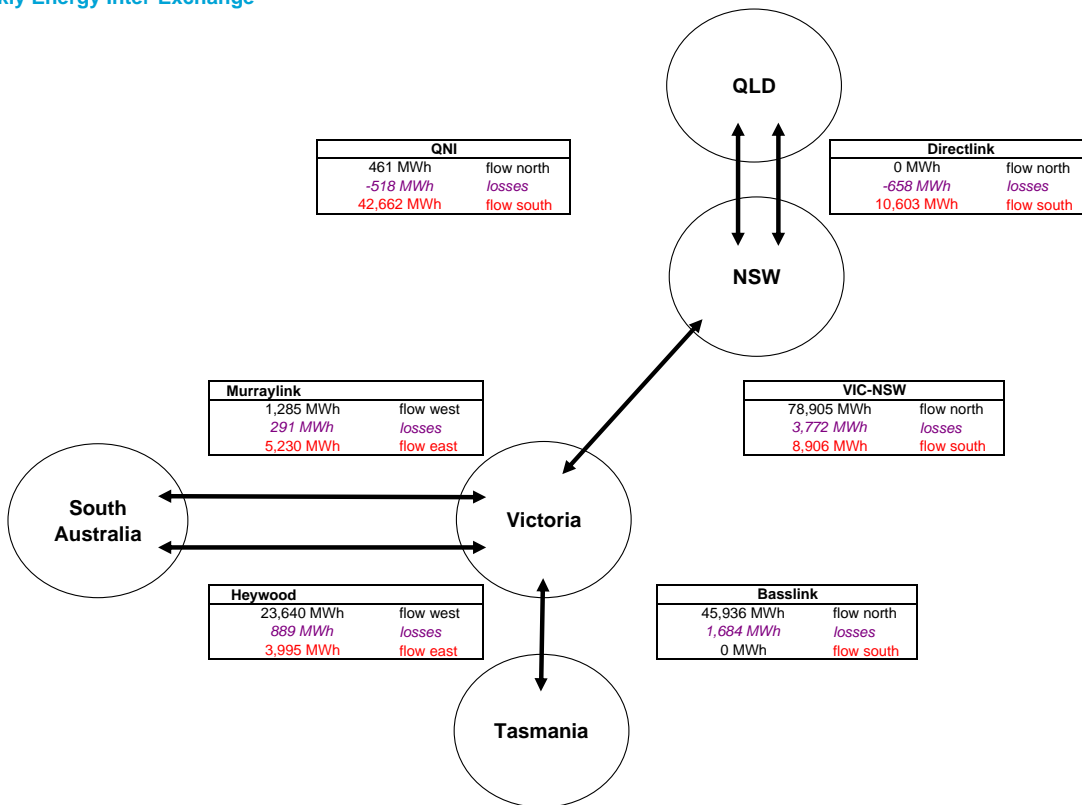


Generation by Fuel Type

	All data in this table is shown in MWh for the week											
	NSW		Queensland		SA		Tasmania		Victoria		Whole of NEM	
	Generation	Flow	Generation	Flow	Generation	Flow	Generation	Flow	Generation	Flow	Generation	Flow
Coal	1,207,647		854,607		64,497		0		940,729		3,067,479	
Gas & Other	68,834		148,943		165,684		22,872		9,572		415,905	
Hydro	20,006		6,300		0		215,336		43,588		285,229	
Pump Storage	-1,314		-670		0		0		0		-1,984	
Total Generation	1,295,173		1,009,180		230,181		238,207		993,888		3,766,629	
Total Exports		9,367		53,265		9,225		45,936		103,830		
Total Imports		132,170		461		24,925		0		64,066		
Net Export (Import)		-122,803		52,804		-15,700		45,936		39,764		
Net Consumption	1,417,976		956,377		245,881		192,272		954,124			

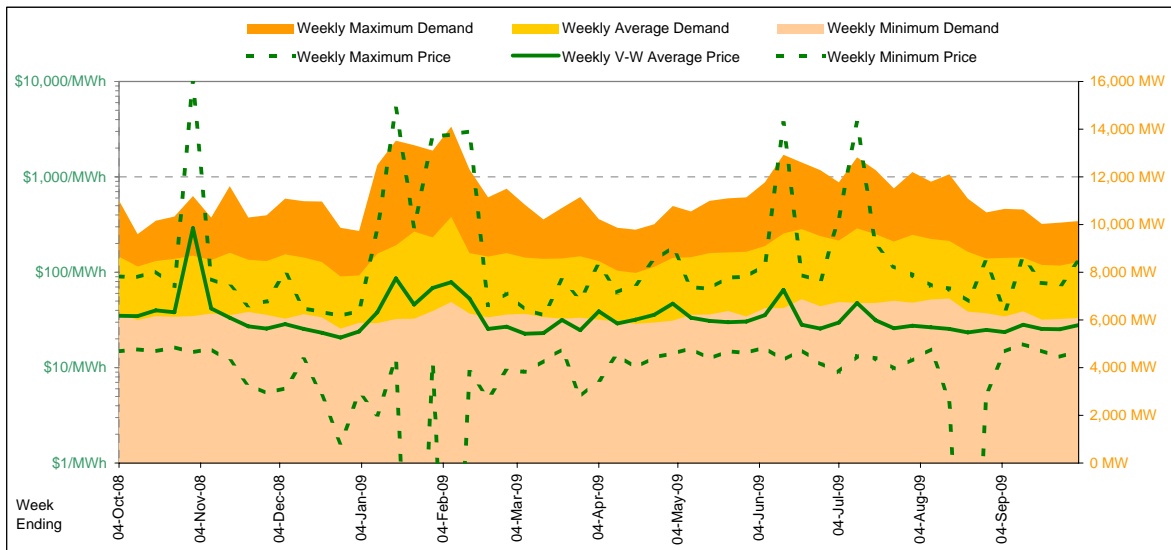


Weekly Energy Inter-Exchange



Current Year

		Week 40 Ending Saturday			52-weeks ending Sat	
		3-Oct-09	% change	4-Oct-08	3-Oct-09	Date Occurred
Energy (MWh)	Total	1,416,134	-3%	1,454,812	77,016,610	
	Maximum	10,154	-8%	11,008	14,106	7-Feb-09
	Average	8,429	-3%	8,660	8,816	
	Minimum	6,080	-3%	6,263	5,632	26-Dec-08
Regional Load Factor (%)		83%		79%	62%	
Trading Price (\$/MWh)	Maximum	127.75	41%	90.71	10000.00	
	Volume-Weighted Ave	27.97	-20%	34.85	39.40	
	Time-Weighted Ave	27.41	-17%	33.20	35.86	
	Minimum	14.92	1%	14.78	-170.76	
Temperature °C (Sydney)	Maximum	33.1	-5%	34.8	40.9	
	Minimum	10.1	-15%	11.9	5.9	

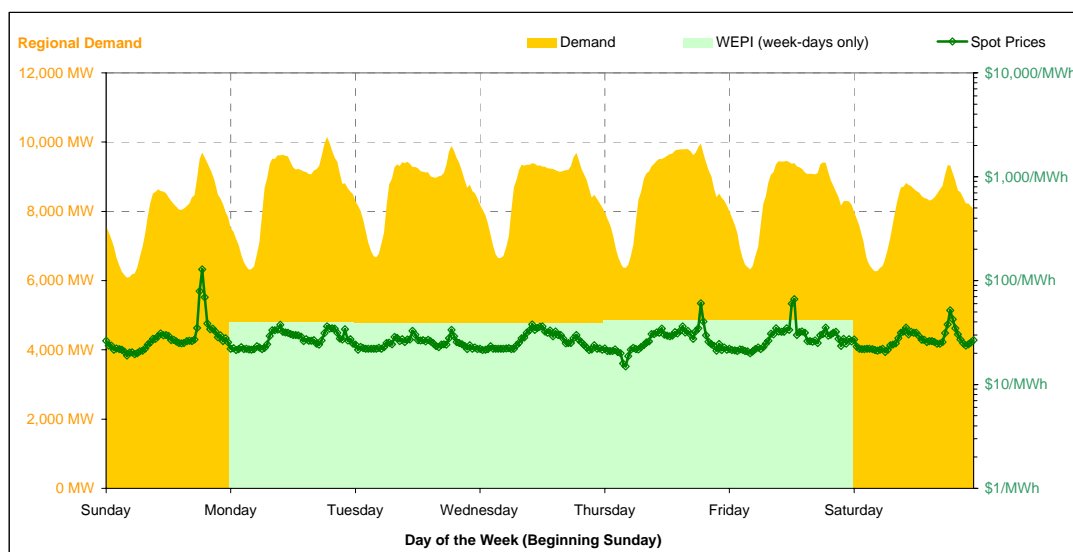


Note that prices below \$1/MWh have been reset to \$1/MWh for the purposes of this display

Current Week

All Data in this table is shown in MWh								
	Weekly Total	Sunday	Monday	Tuesday	Wednesday	Thursday	Friday	Saturday
Total Production by Generation Company								
Babcock & Brown Power	24,941	3,509	3,559	3,593	3,594	3,576	3,560	3,552
Delta Electricity	428,148	61,717	63,823	63,435	62,710	63,045	59,338	54,082
Eraring Energy	273,793	39,212	39,675	40,075	40,169	39,748	39,791	35,125
Macquarie Generation	480,838	64,783	73,374	75,327	67,815	66,342	66,019	67,180
Marubeni	20,164	1,920	3,253	3,243	3,281	3,274	3,274	1,920
Snowy Hydro (NSW)	19,955	1,177	5,743	2,346	1,817	3,401	3,202	2,271
TRUenergy	45,292	3,294	7,761	6,579	7,754	7,661	7,290	4,955
Origin Energy	3,357	0	1,685	0	0	0	1,673	0
Other NSW Plants	0	0	0	0	0	0	0	0
Total internal production	1,296,487	175,611	198,869	194,597	187,139	187,045	184,145	169,084
(Load at Pumped Storage)	-1,314	0	-934	0	0	0	0	-380
Net internal production	1,295,173	175,611	197,935	194,597	187,139	187,045	184,145	168,704
Percentage each company's production represents of the total internal production								
Babcock & Brown Power	1.9%	2.0%	1.8%	1.8%	1.9%	1.9%	1.9%	2.1%
Delta Electricity	33.0%	35.1%	32.1%	32.6%	33.5%	33.7%	32.2%	32.0%
Eraring Energy	21.1%	22.3%	20.0%	20.6%	21.5%	21.3%	21.6%	20.8%
Macquarie Generation	37.1%	36.9%	36.9%	38.7%	36.2%	35.5%	35.9%	39.7%
Marubeni	1.6%	1.1%	1.6%	1.7%	1.8%	1.8%	1.8%	1.1%
Snowy Hydro (NSW)	1.5%	0.7%	2.9%	1.2%	1.0%	1.8%	1.7%	1.3%
TRUenergy	3.5%	1.9%	3.9%	3.4%	4.1%	4.1%	4.0%	2.9%
Origin Energy	0.3%	0.0%	0.8%	0.0%	0.0%	0.0%	0.9%	0.0%
Other NSW Plants	0.0%	0.0%	0.0%	0.0%	0.0%	0.0%	0.0%	0.0%
Total Percentage	100.0%	100.0%	100.0%	100.0%	100.0%	100.0%	100.0%	100.0%

Current Week (continued)



	Sunday	Monday	Tuesday	Wednesday	Thursday	Friday	Saturday
For the Current Week							
Total Energy (MWh)	189,857	207,537	208,353	206,776	208,329	202,915	192,368
Trading Demand Target (MW)	Maximum	9,700	10,154	9,891	9,691	9,456	9,330
	Average	7,911	8,647	8,681	8,616	8,680	8,455
	Minimum	6,080	6,315	6,676	6,645	6,374	6,328
Regional Load Factor (%)	82%	85%	88%	89%	87%	89%	86%
Wholesale Electricity Price Index (WEPI)	N/A	39.42	39.21	38.90	41.72	41.74	N/A
	Maximum	127.75	37.46	33.43	37.89	60.47	51.62
	Volume-Weighted Ave	31.49	28.11	25.22	26.76	27.76	27.59
	Time-Weighted Ave	30.15	27.61	25.02	26.42	27.03	28.53
Trading Price (\$/MWh)	Minimum	18.94	21.42	21.67	21.43	14.92	20.04
	Maximum	17.2	21.4	21.0	25.6	33.1	20.7
	Minimum	10.1	11.0	11.4	10.9	14.9	16.5
Temperature °C (Sydney)							
Percentage Change from Same Week Last Year							
Total Energy (MWh)	1%	-0%	-2%	-2%	-4%	-10%	-0%
Trading Demand Target (MW)	Maximum	7%	-1%	-2%	-2%	-4%	-14%
	Average	1%	-0%	-2%	-2%	-4%	-10%
	Minimum	-3%	-2%	-2%	-1%	-5%	-3%
Wholesale Electricity Price Index (WEPI)	N/A	-14%	-15%	-18%	-14%	-14%	N/A
	Maximum	274%	-24%	-22%	-21%	4%	6%
	Volume-Weighted Ave	43%	-13%	-19%	-21%	-26%	-4%
	Time-Weighted Ave	39%	-12%	-18%	-20%	-26%	-4%
Trading Price (\$/MWh)	Minimum	18%	21%	47%	17%	-23%	8%
	Maximum	-48%	-2%	9%	4%	6%	-41%
	Minimum	-49%	-19%	-4%	-13%	-21%	-22%
Temperature °C (Sydney)							
For the Same Week Last Year							
Total Energy (MWh)	188,308	208,150	212,440	211,279	217,553	224,687	192,396
Trading Demand Target (MW)	Maximum	9,024	10,243	10,072	9,910	10,394	11,008
	Average	7,846	8,673	8,852	8,803	9,065	9,362
	Minimum	6,263	6,419	6,780	6,734	6,688	6,812
Regional Load Factor (%)	87%	85%	88%	89%	87%	85%	89%
Wholesale Electricity Price Index (WEPI)	N/A	46.04	46.29	47.30	48.66	48.70	N/A
	Maximum	34.15	49.23	43.13	47.97	58.28	48.60
	Volume-Weighted Ave	22.01	32.30	31.29	33.93	37.74	54.70
	Time-Weighted Ave	21.75	31.20	30.69	33.09	36.40	51.12
Trading Price (\$/MWh)	Minimum	16.11	17.68	14.78	18.29	19.32	20.67
	Maximum	32.9	21.8	19.2	24.7	31.1	34.8
	Minimum	19.8	13.5	11.9	12.6	18.9	22.5
Temperature °C (Sydney)							

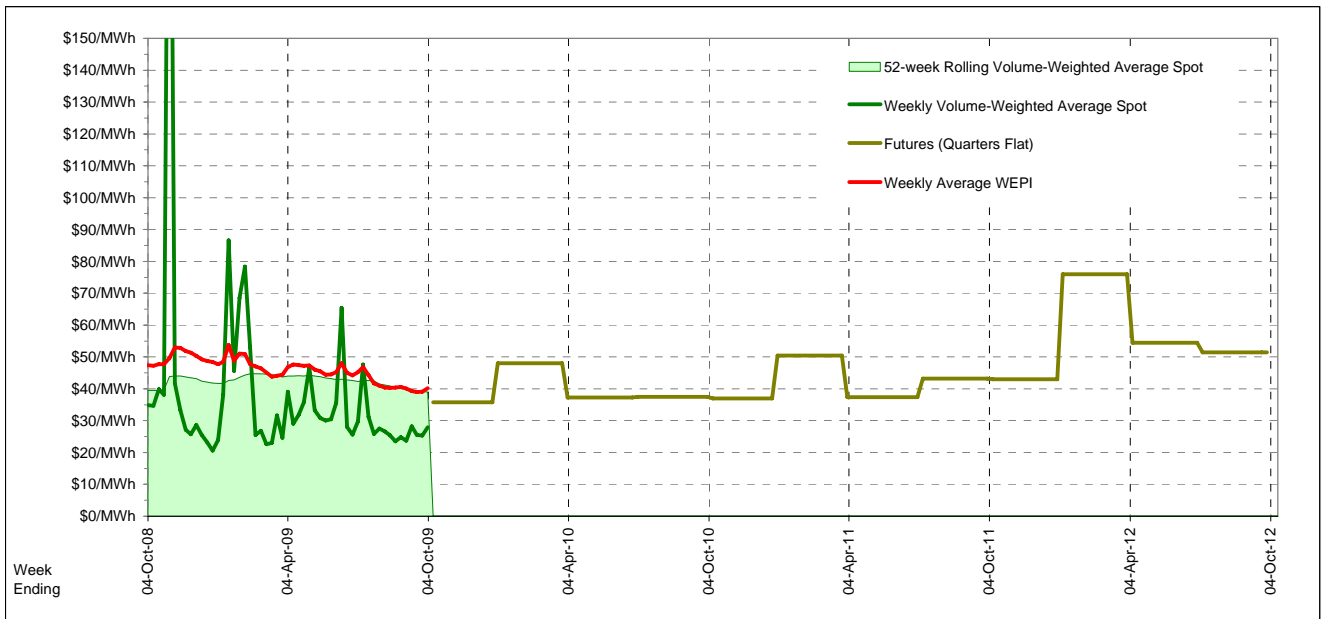
Long-Term Trends

This table contains electricity futures pricing, supplied by d-cyphatrade. All data other than flat and peak quarterly pricing is implied.

Futures settlement prices for flat load (all times)		CaYear	FinYear Ending	Q1	Q2	Q3	Q4
2009							35.75
2010		39.90		48.00	37.25	37.50	37.00
2011		43.50	40.54	50.45	37.40	43.25	43.00
2012		58.55	54.11	76.00	54.45	51.45	

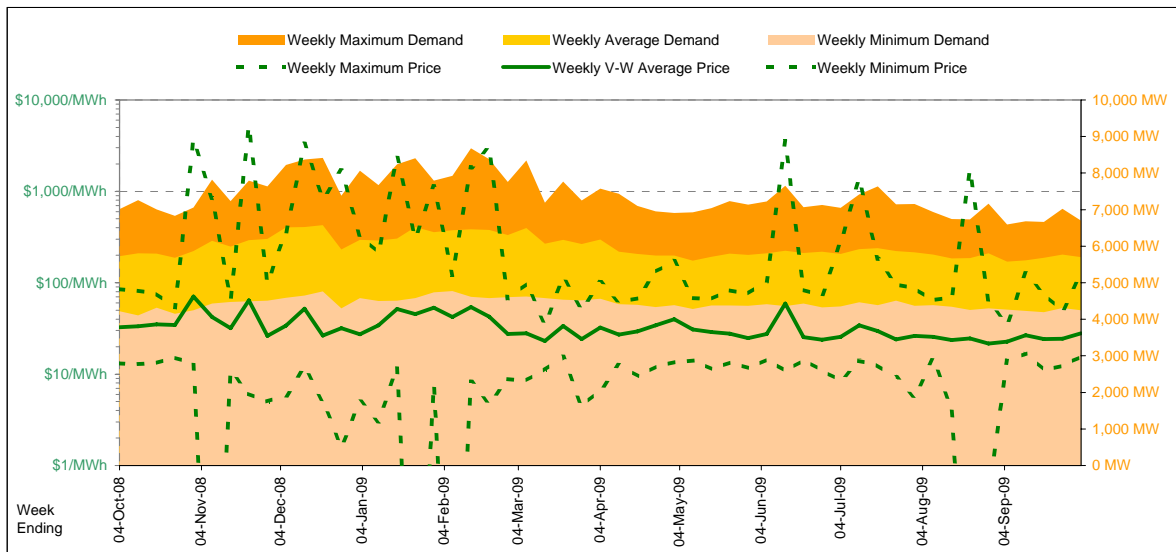
Futures settlement prices for peak load (7am-10pm M-F)		CaYear	FinYear Ending	Q1	Q2	Q3	Q4
2009							55.50
2010		59.89		79.75	53.00	52.95	54.30
2011		64.24	61.51	83.80	55.55	59.75	58.00
2012		54.63	61.16	78.25	48.25	49.00	

Implied Prices for Off-Peak Load (All other times)		CaYear	FinYear Ending	Q1	Q2	Q3	Q4
2009							19.82
2010		23.78		22.40	24.55	25.04	23.05
2011		26.77	23.63	23.55	22.76	29.94	30.90
2012		61.71	48.42	74.19	59.45	53.43	



Current Year

		Week 40 Ending Saturday		52-Weeks Ending Sat		Date Occurred
		3-Oct-09	% change	4-Oct-08	3-Oct-09	
Energy (MWh)	Total	956,977	-0%	961,454	52,281,099	
Trading Demand (MW)	Maximum	6,697	-4%	7,011	8,677	9-Feb-09
	Average	5,696	-0%	5,723	5,985	
	Minimum	4,251	1%	4,224	4,108	11-Oct-08
Regional Load Factor (%)		85%		82%	69%	
Trading Price (\$/MWh)	Maximum	125.36	47%	84.99	5061.39	
	Volume-Weighted Ave	27.92	-15%	32.66	33.68	
	Time-Weighted Ave	27.34	-13%	31.26	31.58	
	Minimum	15.69	20%	13.12	-180.89	
Temperature °C (Brisbane)	Maximum	34.1	-3%	35.1	36.1	
	Minimum	8.7	-21%	11.0	5.5	

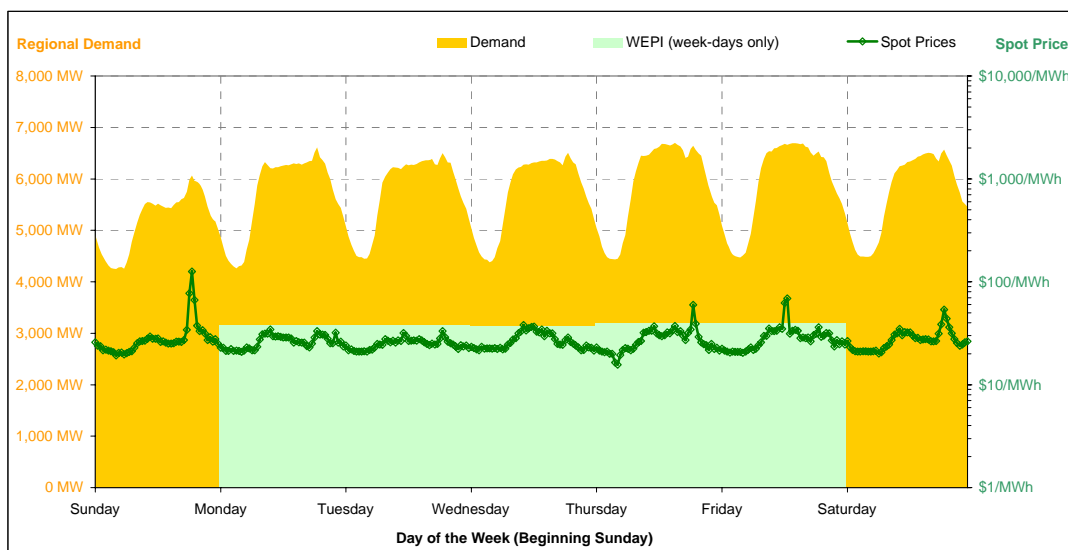


Note that prices below \$1/MWh have been reset to \$1/MWh for the purposes of this display

Current Week

All Data in this table is shown in MWh								
	Weekly Total	Sunday	Monday	Tuesday	Wednesday	Thursday	Friday	Saturday
Total Production by Generation Company								
AGL	27,276	0	4,372	4,885	4,862	4,768	4,664	3,726
Babcock & Brown Power	30,656	3,776	5,281	4,613	4,604	5,292	3,562	3,529
Braemar 2 Partnership	35,681	4,148	6,651	4,331	5,459	5,804	5,696	3,594
Callide Power Trading	66,966	9,388	9,773	9,569	9,776	9,285	9,679	9,498
CS Energy	236,298	30,850	34,737	33,384	34,166	34,197	34,674	34,292
Millmerran Energy Trader	73,053	10,440	10,440	10,438	10,437	10,437	10,432	10,431
Origin Energy	5,595	823	823	818	792	772	784	785
Stanwell	350,540	49,302	50,896	49,648	50,480	49,030	50,219	50,967
Tarong Energy	182,462	23,487	26,957	26,988	23,475	27,377	27,407	26,772
Tarong North Trader	0	0	0	0	0	0	0	0
Other QLD Plants	1,326	249	56	239	85	236	462	0
Total internal production	1,009,850	132,461	149,985	144,910	144,134	147,195	147,576	143,591
(Load at Pumped Storage)	-670	0	0	0	-670	0	0	0
Net internal production	1,009,180	132,461	149,985	144,910	143,465	147,195	147,576	143,591
Percentage each company's production represents of the total internal production								
AGL	2.7%	0.0%	2.9%	3.4%	3.4%	3.2%	3.2%	2.6%
Babcock & Brown Power	3.0%	2.9%	3.5%	3.2%	3.2%	3.6%	2.4%	2.5%
Braemar 2 Partnership	3.5%	3.1%	4.4%	3.0%	3.8%	3.9%	2.5%	2.5%
Callide Power Trading	6.6%	7.1%	6.5%	6.6%	6.8%	6.3%	6.6%	6.6%
CS Energy	23.4%	23.3%	23.2%	23.0%	23.7%	23.2%	23.5%	23.9%
Millmerran Energy Trader	7.2%	7.9%	7.0%	7.2%	7.2%	7.1%	7.1%	7.3%
Origin Energy	0.6%	0.6%	0.5%	0.6%	0.5%	0.5%	0.5%	0.5%
Stanwell	34.7%	37.2%	33.9%	34.3%	35.0%	33.3%	34.0%	35.5%
Tarong Energy	18.1%	17.7%	18.0%	18.6%	16.3%	18.6%	18.6%	18.6%
Tarong North Trader	0.0%	0.0%	0.0%	0.0%	0.0%	0.0%	0.0%	0.0%
Other QLD Plants	0.1%	0.2%	0.0%	0.2%	0.1%	0.2%	0.3%	0.0%
Total Percentage	100.0%	100.0%	100.0%	100.0%	100.0%	100.0%	100.0%	100.0%

Current Week (continued)



	Sunday	Monday	Tuesday	Wednesday	Thursday	Friday	Saturday
For the Current Week							
Total Energy (MWh)	124,500	136,954	137,938	137,511	141,310	141,763	137,002
Trading Demand Target (MW)	Maximum	6,065	6,615	6,503	6,508	6,697	6,571
	Average	5,187	5,706	5,747	5,730	5,888	5,907
	Minimum	4,251	4,261	4,445	4,380	4,434	4,474
Regional Load Factor (%)	86%	86%	88%	88%	88%	88%	87%
Wholesale Electricity Price Index (WEPI)	N/A	37.98	37.74	37.37	39.64	39.63	N/A
	Maximum	125.36	34.30	33.27	37.98	59.77	68.75
	Volume-Weighted Ave	30.69	26.60	25.28	27.13	28.18	29.81
	Time-Weighted Ave	29.70	26.21	25.01	26.71	27.41	29.02
	Minimum	19.29	20.91	20.94	21.47	15.69	20.41
Temperature °C (Brisbane)	Maximum	24.7	25.6	26.8	26.1	28.3	34.1
	Minimum	15.3	8.7	10.0	12.5	14.1	19.7
Percentage Change from Same Week Last Year							
Total Energy (MWh)	-1%	-4%	-2%	-1%	1%	0%	4%
Trading Demand Target (MW)	Maximum	-2%	-6%	-1%	-0%	-1%	6%
	Average	-1%	-4%	-2%	-1%	1%	0%
	Minimum	1%	-2%	1%	0%	0%	-0%
Wholesale Electricity Price Index (WEPI)	N/A	-32%	-31%	-33%	-30%	-30%	N/A
	Maximum	292%	-27%	-21%	-19%	12%	-19%
	Volume-Weighted Ave	47%	-15%	-16%	-17%	-20%	-40%
	Time-Weighted Ave	45%	-13%	-15%	-16%	-20%	-38%
	Minimum	36%	31%	60%	27%	-19%	13%
Temperature °C (Brisbane)	Maximum	-7%	-27%	9%	5%	15%	24%
	Minimum	39%	-34%	-33%	-7%	0%	45%
For the Same Week Last Year							
Total Energy (MWh)	126,206	142,902	140,096	138,964	140,295	141,757	131,235
Trading Demand Target (MW)	Maximum	6,162	7,011	6,579	6,509	6,700	6,774
	Average	5,259	5,954	5,837	5,790	5,846	5,907
	Minimum	4,224	4,361	4,389	4,365	4,412	4,478
Regional Load Factor (%)	85%	85%	89%	89%	87%	87%	88%
Wholesale Electricity Price Index (WEPI)	N/A	55.80	54.74	55.55	56.38	56.82	N/A
	Maximum	31.98	47.07	42.31	46.69	53.52	84.99
	Volume-Weighted Ave	20.86	31.42	30.15	32.77	35.19	49.57
	Time-Weighted Ave	20.53	30.07	29.36	31.69	34.07	46.75
	Minimum	14.23	15.98	13.12	16.91	19.32	18.03
Temperature °C (Brisbane)	Maximum	26.6	35.1	24.7	24.9	24.7	26.8
	Minimum	11.0	13.1	14.9	13.4	14.1	13.4

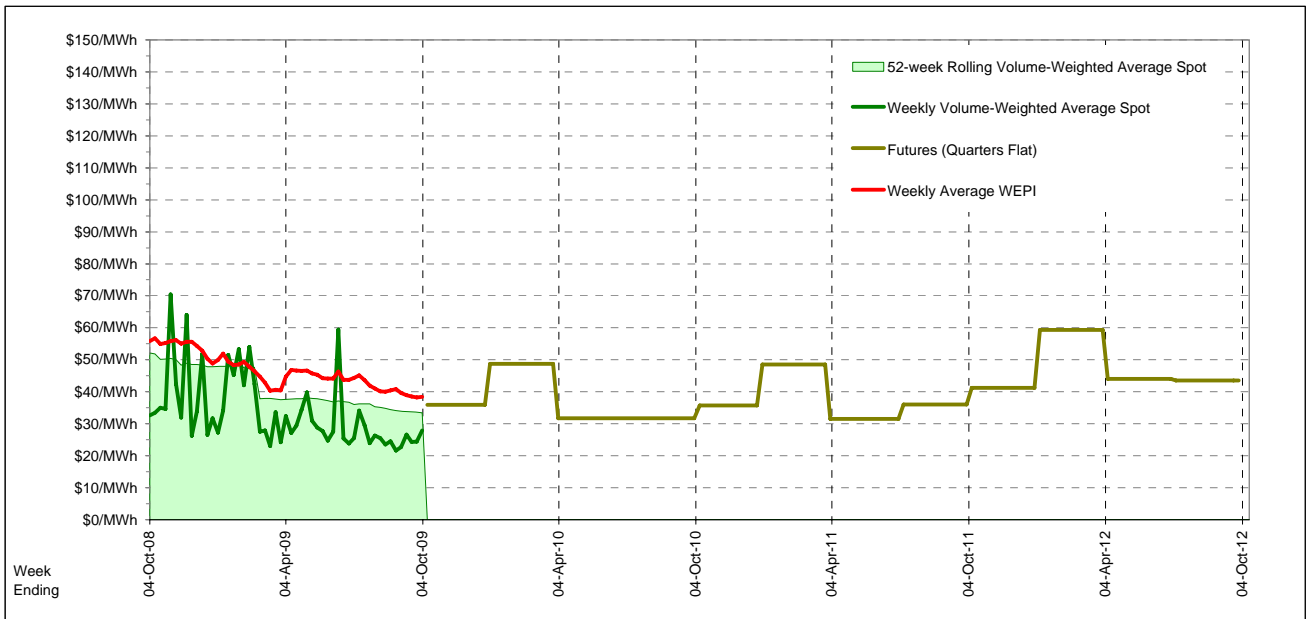
Long-Term Trends

This table contains electricity futures pricing, supplied by d-cyphatrade. All data other than flat and peak quarterly pricing is implied.

Futures settlement prices for flat load (all times)		CalYear	FinYear Ending	Q1	Q2	Q3	Q4
		2009					35.90
		2010	36.95	48.75	31.75	31.75	35.75
		2011	39.30	36.84	48.50	31.55	36.00
		2012	49.50	45.11	59.35	44.00	43.50

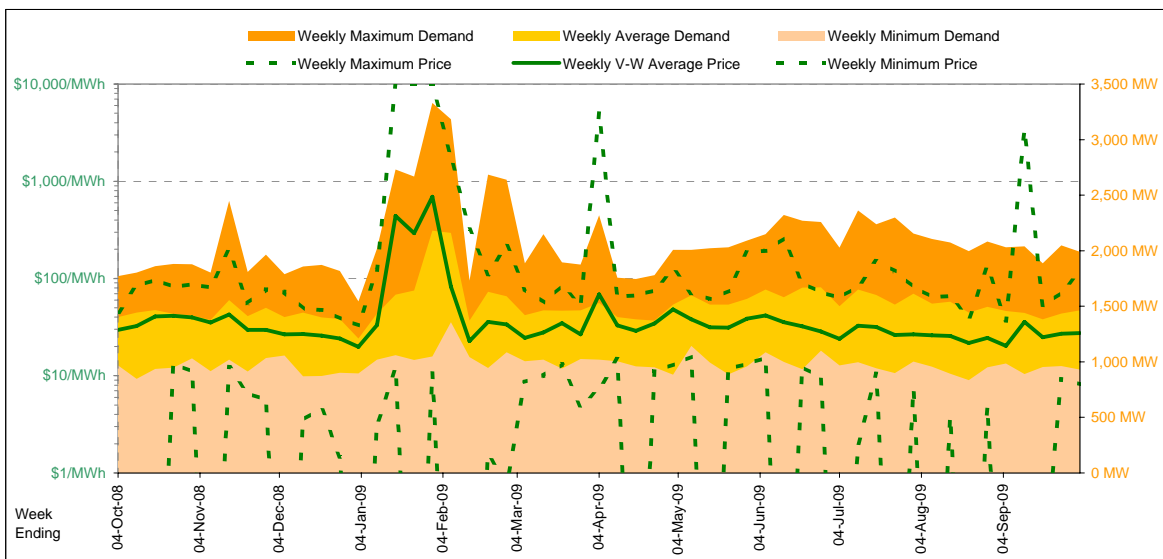
Futures settlement prices for peak load (7am-10pm M-F)		CalYear	FinYear Ending	Q1	Q2	Q3	Q4
		2009					52.00
		2010	55.61	82.50	44.50	44.75	51.00
		2011	62.91	55.30	81.75	44.00	59.40
		2012	76.41	75.22	120.00	55.00	60.00

Implied Prices for Off-Peak Load (All other times)		CalYear	FinYear Ending	Q1	Q2	Q3	Q4
		2009					22.92
		2010	21.90	21.53	21.47	21.27	23.45
		2011	20.26	21.95	21.69	21.51	17.13
		2012	27.80	20.83	10.44	35.13	30.19



Current Year

Energy (MWh)	Total	Week 40 Ending Saturday		52-Weeks Ending Sat		Date Occurred
		3-Oct-09	% change	4-Oct-08	3-Oct-09	
Trading Demand (MW)	Maximum	1,990	12%	1,772	3,331	28-Jan-09
	Average	1,463	4%	1,403	1,517	
	Minimum	931	-4%	967	834	16-Aug-09
Regional Load Factor (%)		74%		79%	46%	
Trading Price (\$/MWh)	Maximum	117.17	158%	45.36	9999.92	
	Volume-Weighted Ave	27.56	-7%	29.69	65.26	
	Time-Weighted Ave	26.50	-7%	28.35	47.63	
	Minimum	8.19	105%	-155.13	-1000.00	
Temperature °C (Adelaide)	Maximum	26.3	-3%	27.2	45.7	
	Minimum	7.2	16%	6.2	2.9	

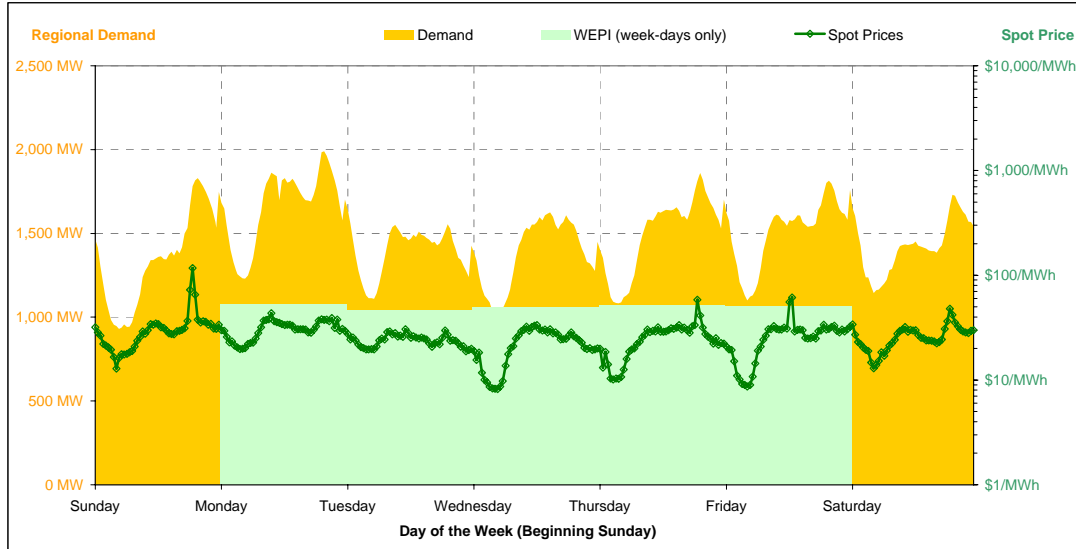


Note that prices below \$1/MWh have been reset to \$1/MWh for the purposes of this display

Current Week

All Data in this table is shown in MWh								
	Weekly Total	Sunday	Monday	Tuesday	Wednesday	Thursday	Friday	Saturday
Total Production by Generation Company								
AGL	44,981	7,697	8,601	6,232	7,170	5,504	6,200	3,579
International Power (Pelican Point)	66,143	6,648	10,107	9,923	10,184	10,565	10,032	8,685
International Power (Synergen)	16	0	5	0	0	0	12	0
Flinders Power	69,689	6,292	10,161	10,840	10,903	10,396	10,537	10,561
Origin Energy	16,499	2,585	2,641	2,705	2,193	1,233	2,913	2,230
Osborne	23,696	3,472	3,721	3,248	3,188	3,325	3,399	3,345
TRUenergy	0	0	0	0	0	0	0	0
Other SA Plants	9,159	1,527	167	2,224	2,391	919	1,670	262
Total internal production	230,181	28,221	35,400	35,170	36,028	31,941	34,762	28,661
(Load at Pumped Storage)	0	0	0	0	0	0	0	0
Net internal production	230,181	28,221	35,400	35,170	36,028	31,941	34,762	28,661
Percentage each company's production represents of the total internal production								
AGL	19.5%	27.3%	24.3%	17.7%	19.9%	17.2%	17.8%	12.5%
International Power (Pelican Point)	28.7%	23.6%	28.6%	28.2%	28.3%	33.1%	28.9%	30.3%
International Power (Synergen)	0.0%	0.0%	0.0%	0.0%	0.0%	0.0%	0.0%	0.0%
Flinders Power	30.3%	22.3%	28.7%	30.8%	30.3%	32.5%	30.3%	36.8%
Origin Energy	7.2%	9.2%	7.5%	7.7%	6.1%	3.9%	8.4%	7.8%
Osborne	10.3%	12.3%	10.5%	9.2%	8.8%	10.4%	9.8%	11.7%
TRUenergy	0.0%	0.0%	0.0%	0.0%	0.0%	0.0%	0.0%	0.0%
Other SA Plants	4.0%	5.4%	0.5%	6.3%	6.6%	2.9%	4.8%	0.9%
Total Percentage	100.0%	100.0%	100.0%	100.0%	100.0%	100.0%	100.0%	100.0%

Current Week (continued)



	Sunday	Monday	Tuesday	Wednesday	Thursday	Friday	Saturday
For the Current Week							
Total Energy (MWh)	32,330	39,948	33,547	33,150	35,980	36,346	34,429
Trading Demand Target (MW)	Maximum	1,829	1,990	1,641	1,625	1,860	1,759
	Average	1,347	1,665	1,398	1,381	1,499	1,514
	Minimum	931	1,230	1,109	1,000	1,082	1,101
Regional Load Factor (%)	74%	84%	85%	85%	81%	83%	82%
Wholesale Electricity Price Index (WEPI)	N/A	52.68	46.54	48.95	51.70	50.25	N/A
	Maximum	117.17	43.39	30.45	33.48	58.32	61.42
	Volume-Weighted Ave	33.39	31.42	24.17	23.09	26.26	27.14
Trading Price (\$/MWh)	Time-Weighted Ave	31.18	30.70	23.95	22.06	25.12	26.20
	Minimum	12.84	19.76	18.86	8.19	10.12	8.67
	Maximum	14.8	17.5	23.1	26.3	18.7	15.1
Temperature °C (Adelaide)	9.4	7.2	8.5	17.4	11.7	11.5	9.6
Percentage Change from Same Week Last Year							
Total Energy (MWh)	13%	11%	-6%	4%	1%	2%	8%
Trading Demand Target (MW)	Maximum	20%	12%	-3%	4%	8%	10%
	Average	13%	11%	-6%	4%	1%	2%
	Minimum	-6%	13%	-4%	3%	-0%	2%
Wholesale Electricity Price Index (WEPI)	N/A	-23%	-30%	-27%	-27%	-27%	N/A
	Maximum	272%	-3%	-32%	-15%	29%	45%
	Volume-Weighted Ave	69%	-3%	-29%	-22%	-24%	-12%
Trading Price (\$/MWh)	Time-Weighted Ave	61%	-2%	-28%	-22%	-25%	-10%
	Minimum	22%	40%	38%	380%	-33%	106%
	Maximum	-23%	5%	1%	-3%	-25%	-26%
Temperature °C (Adelaide)	-24%	-21%	37%	16%	-22%	-6%	19%
For the Same Week Last Year							
Total Energy (MWh)	28,645	36,125	35,680	31,802	35,708	35,740	31,980
Trading Demand Target (MW)	Maximum	1,528	1,772	1,694	1,569	1,727	1,700
	Average	1,194	1,505	1,487	1,325	1,488	1,489
	Minimum	990	1,086	1,158	967	1,084	1,081
Regional Load Factor (%)	78%	85%	88%	84%	86%	88%	83%
Wholesale Electricity Price Index (WEPI)	N/A	68.41	66.84	67.26	70.53	69.27	N/A
	Maximum	31.52	44.73	44.78	39.57	45.36	42.22
	Volume-Weighted Ave	19.77	32.32	34.15	29.75	34.49	30.67
Trading Price (\$/MWh)	Time-Weighted Ave	19.41	31.25	33.45	28.27	33.30	29.02
	Minimum	10.52	14.15	13.69	-2.93	15.04	-155.13
	Maximum	19.1	16.7	22.8	27.2	24.8	20.4
Temperature °C (Adelaide)	12.4	9.1	6.2	15.0	15.0	12.2	8.1

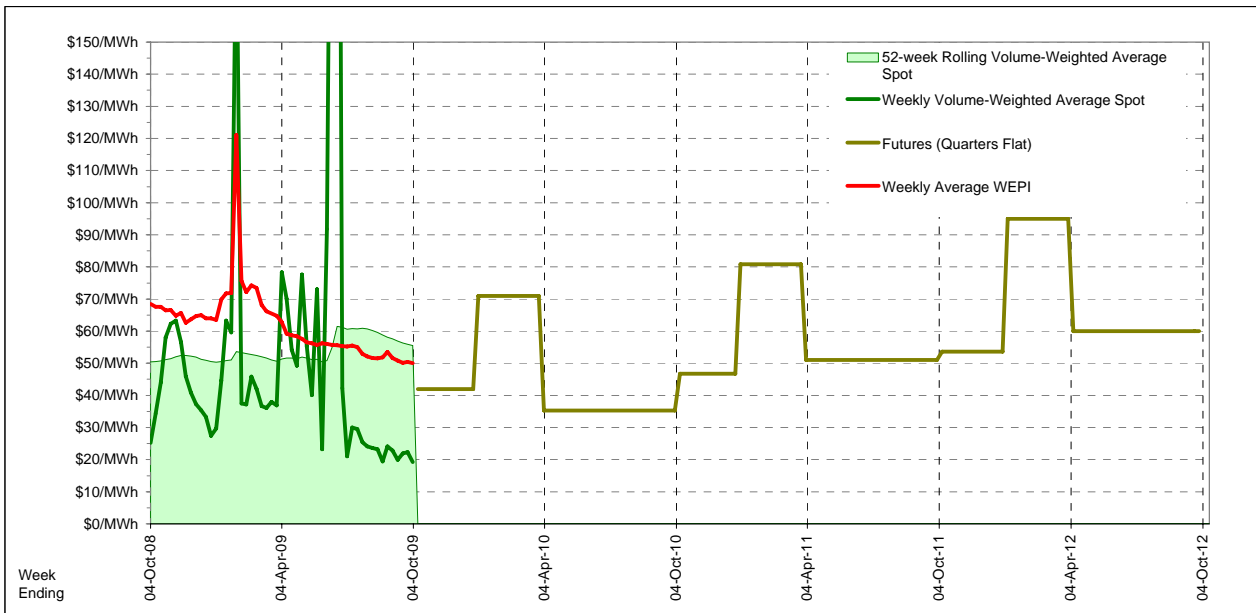
Long-Term Trends

This table contains electricity futures pricing, supplied by d-cyphatrade. All data other than flat and peak quarterly pricing is implied.

<i>Futures settlement prices</i> for flat load (all times)	CalYear	FinYear Ending	Q1	Q2	Q3	Q4
	2009					42.00
	2010		71.00	35.30	35.30	46.75
	2011	53.32	80.80	51.00	51.00	53.60
	2012	64.83	95.00	60.00	60.00	

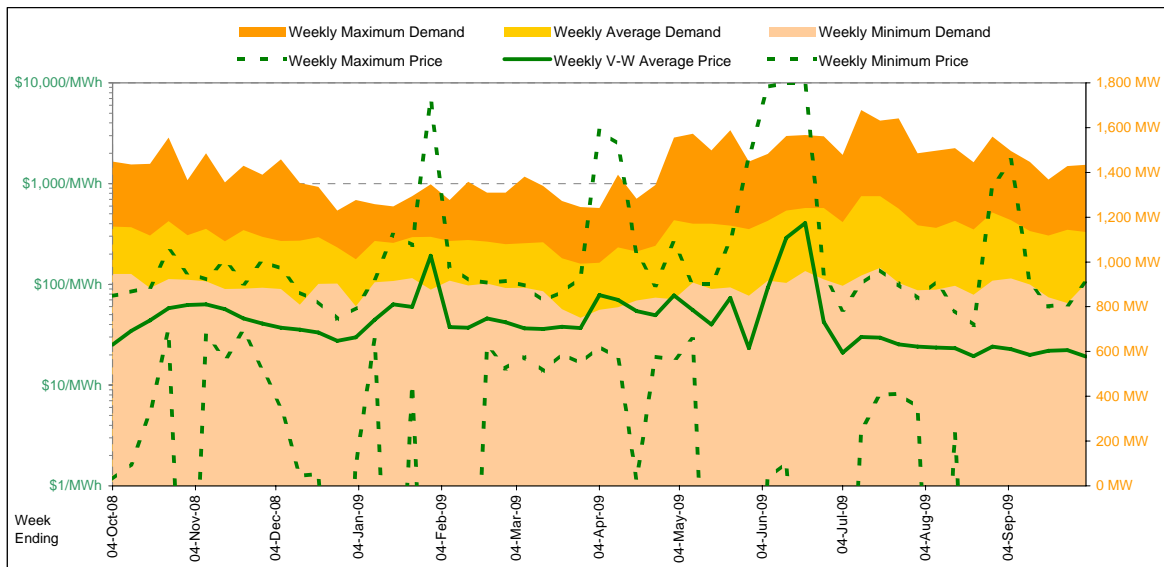
<i>Futures settlement prices</i> for peak load (7am-10pm M-F)	CalYear	FinYear Ending	Q1	Q2	Q3	Q4
	2009					86.50
	2010	82.86	145.00	63.00	51.00	74.00
	2011	66.67	71.11	100.00	61.00	45.50
	2012	56.06	100.00	36.50	42.75	

<i>Implied Prices</i> for Off-Peak Load (All other times)	CalYear	FinYear Ending	Q1	Q2	Q3	Q4
	2009					6.11
	2010	18.06	11.32	12.96	22.64	24.77
	2011	52.81	38.97	65.32	42.94	60.13
	2012	80.27	68.04	90.97	78.95	73.91



Current Year

		Week 40 Ending Saturday			52-Weeks Ending Sat	
		3-Oct-09	% change	4-Oct-08	3-Oct-09	Date Occurred
Energy (MWh)	Total	190,563	-2%	194,585	9,893,273	
	Maximum	1,434	-1%	1,448	1,679	9-Jul-09
	Average	1,134	-2%	1,158	1,132	
Trading Demand (MW)	Minimum	904	-5%	947	751	22-Mar-09
	Regional Load Factor (%)	79%		80%	67%	
Trading Price (\$/MWh)	Maximum	103.48	35%	76.48	9992.30	
	Volume-Weighted Ave	19.20	-24%	25.17	56.94	
	Time-Weighted Ave	18.47	-24%	24.38	53.31	
	Minimum	-12.11	-1,144%	1.16	-999.76	
Temperature °C (Hobart)	Maximum	21.2	-3%	21.9	33.5	
	Minimum	3.1	-38%	5.0	0.5	

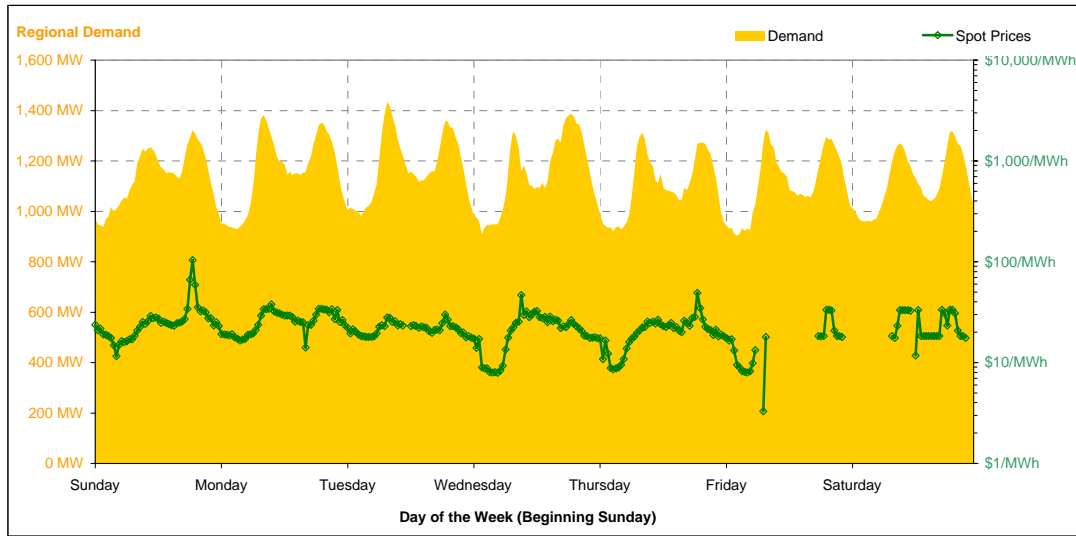


Note that prices below \$1/MWh have been reset to \$1/MWh for the purposes of this display

Current Week

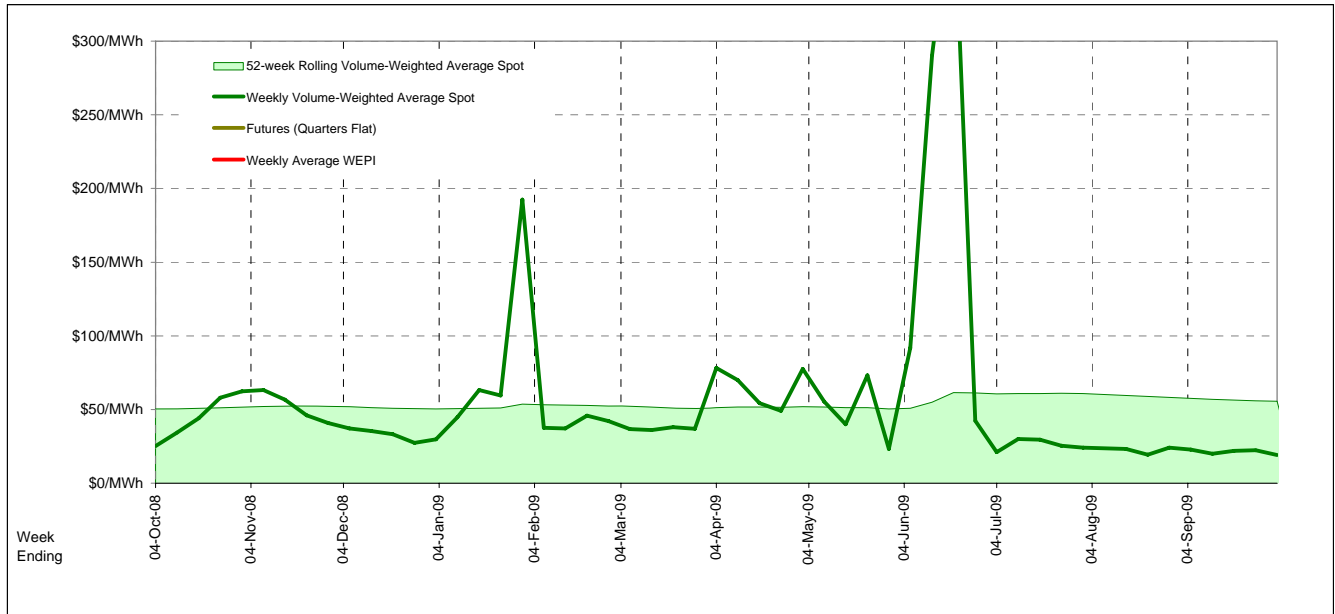
All Data in this table is shown in MWh								
Weekly Total	Sunday	Monday	Tuesday	Wednesday	Thursday	Friday	Saturday	
Total Production by Generation Company								
Aurora Energy	22,828	4,911	4,884	4,728	2,774	3,967	1,565	0
Hydro Tasmania	215,336	29,903	32,436	32,726	32,844	33,185	27,516	26,727
Bell Bay Power	44	0	0	0	22	22	0	0
Other TAS Plants	0	0	0	0	0	0	0	0
Total internal production	238,207	34,814	37,320	37,454	35,640	37,173	29,080	26,727
(Load at Pumped Storage)	0	0	0	0	0	0	0	0
Net internal production	238,207	34,814	37,320	37,454	35,640	37,173	29,080	26,727
Percentage each company's production represents of the total internal production								
Aurora Energy	9.6%	14.1%	13.1%	12.6%	7.8%	10.7%	5.4%	0.0%
Hydro Tasmania	90.4%	85.9%	86.9%	87.4%	92.2%	89.3%	94.6%	100.0%
Bell Bay Power	0.0%	0.0%	0.0%	0.0%	0.1%	0.1%	0.0%	0.0%
Other TAS Plants	0.0%	0.0%	0.0%	0.0%	0.0%	0.0%	0.0%	0.0%
Total Percentage	100.0%	100.0%	100.0%	100.0%	100.0%	100.0%	100.0%	100.0%

Current Week (continued)



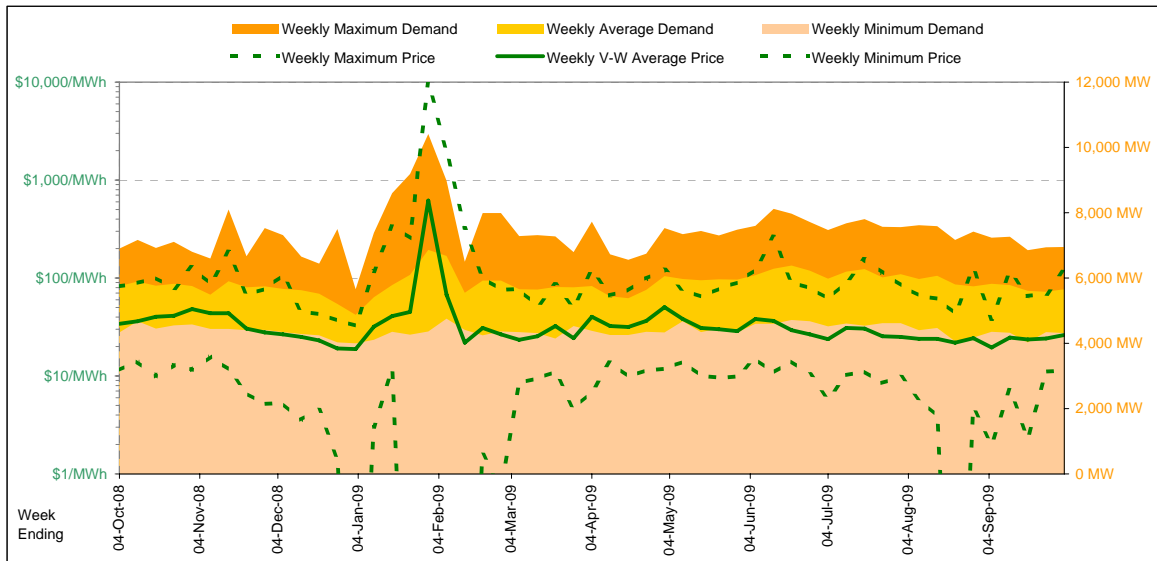
		Sunday	Monday	Tuesday	Wednesday	Thursday	Friday	Saturday
For the Current Week								
Total Energy (MWh)		27,229	27,804	28,249	27,541	26,403	26,612	26,725
Trading Demand Target (MW)	Maximum	1,322	1,381	1,434	1,387	1,311	1,324	1,317
	Average	1,135	1,159	1,177	1,148	1,100	1,109	1,114
	Minimum	939	929	981	909	919	904	959
Regional Load Factor (%)	Maximum	86%	84%	82%	83%	84%	84%	85%
	Minimum	103.48	37.75	29.97	46.77	49.21	33.30	33.30
Trading Price (\$/MWh)	Volume-Weighted Ave	27.58	26.64	20.77	21.62	21.28	4.22	11.65
	Time-Weighted Ave	26.73	25.99	20.51	21.06	20.72	3.96	10.29
	Minimum	11.58	14.11	-12.11	7.91	8.60	-9.82	-9.84
Temperature °C (Hobart)	Maximum	12.1	13.3	14.0	21.2	16.6	15.0	11.8
	Minimum	7.0	8.5	3.1	7.2	7.9	7.4	6.7
Percentage Change from Same Week Last Year								
Total Energy (MWh)		0%	-6%	-2%	-1%	-2%	-2%	-1%
Trading Demand Target (MW)	Maximum	-4%	-5%	2%	1%	2%	-0%	3%
	Average	0%	-6%	-2%	-1%	-2%	-2%	-1%
	Minimum	-3%	-5%	-5%	-12%	-4%	-5%	-5%
Trading Price (\$/MWh)	Maximum	216%	-21%	-57%	3%	-17%	-56%	-26%
	Volume-Weighted Ave	284%	15%	-13%	-9%	-29%	-89%	-59%
	Time-Weighted Ave	314%	22%	-12%	-10%	-30%	-90%	-64%
Temperature °C (Hobart)	Maximum	898%	1,076%	-420%	125%	35%	-947%	-165%
	Minimum	-28%	-5%	-16%	-3%	-21%	-6%	-29%
	Minimum	-20%	70%	-58%	-24%	-28%	-32%	-3%
For the Same Week Last Year								
Total Energy (MWh)		27,200	29,604	28,681	27,866	26,912	27,271	27,052
Trading Demand Target (MW)	Maximum	1,372	1,448	1,404	1,372	1,285	1,329	1,277
	Average	1,133	1,233	1,195	1,161	1,121	1,136	1,127
	Minimum	965	977	1,028	1,032	962	947	1,008
Regional Load Factor (%)	Maximum	83%	85%	85%	85%	87%	85%	88%
	Minimum	32.71	48.06	70.45	45.59	59.29	76.48	45.15
Trading Price (\$/MWh)	Volume-Weighted Ave	7.18	23.11	23.96	23.79	30.15	39.53	28.75
	Time-Weighted Ave	6.45	21.34	23.43	23.42	29.63	37.87	28.50
	Minimum	1.16	1.20	3.78	3.52	6.37	1.16	15.08
Temperature °C (Hobart)	Maximum	16.9	14.0	16.6	21.9	20.9	15.9	16.6
	Minimum	8.7	5.0	7.4	9.5	10.9	10.9	6.9

Long-Term Trends



Current Year

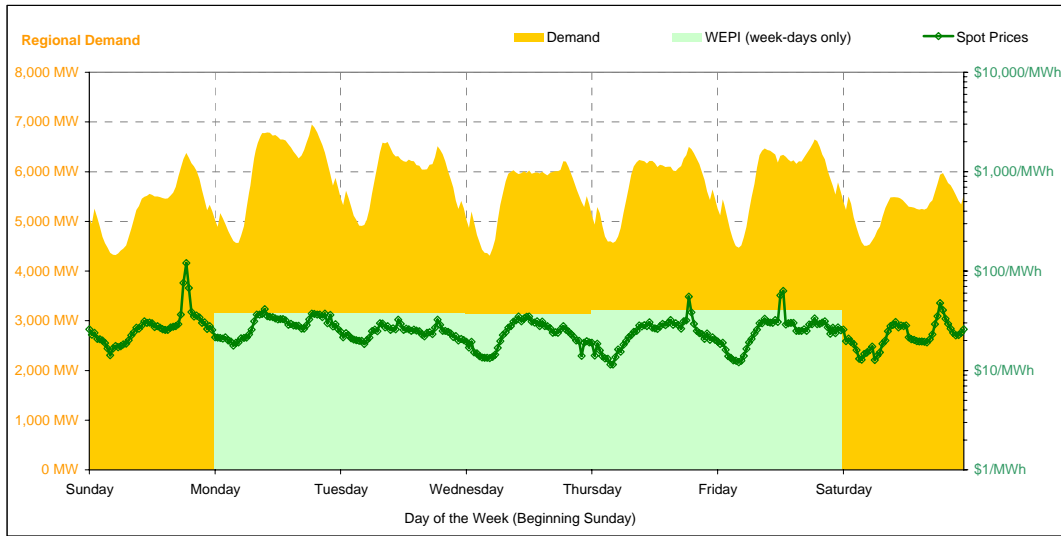
		Week 40 Ending Saturday			52-Weeks Ending Sat	
		3-Oct-09	% change	4-Oct-08	3-Oct-09	Date Occurred
Energy (MWh)	Total	950,412	-2%	966,161	51,002,308	
	Maximum	6,949	1%	6,904	10,415	29-Jan-09
	Average	5,657	-2%	5,751	5,838	
Trading Demand (MW)	Minimum	4,310	-1%	4,335	4,004	28-Dec-08
	Regional Load Factor (%)	81%		83%	56%	
Trading Price (\$/MWh)	Maximum	119.93	46%	82.10	10000.00	
	Volume-Weighted Ave	26.27	-23%	34.11	44.71	
	Time-Weighted Ave	25.58	-22%	32.83	37.65	
	Minimum	11.44	0%	11.43	-496.71	
Temperature °C (Melbourne)	Maximum	23.6	-10%	26.2	46.4	
	Minimum	7.7	15%	6.7	2.9	



Current Week

All Data in this table is shown in MWh								
	Weekly Total	Sunday	Monday	Tuesday	Wednesday	Thursday	Friday	Saturday
Total Production by Generation Company								
AGL	13,956	2,326	2,254	1,795	1,485	1,661	2,010	2,427
Anglesea	25,525	3,833	3,831	3,259	3,095	3,835	3,840	3,834
Babcock & Brown Power	471	33	33	273	33	33	33	33
Ecogen Energy	7,866	0	3,771	3,620	0	0	348	128
Energy Brix	23,933	2,898	3,484	3,667	3,542	3,434	3,455	3,455
International Power (Hazelwood)	220,474	32,487	33,467	33,727	32,917	32,173	27,759	27,945
Loy Yang B	173,431	25,254	25,320	25,320	24,106	23,995	24,346	25,092
Loy Yang Power	253,402	26,708	26,295	26,093	31,109	40,540	50,636	52,022
Snowy Hydro	30,868	1,958	4,135	5,222	6,062	7,361	5,568	563
TRUenergy	243,965	35,083	34,785	34,676	34,571	34,612	35,108	35,132
Other VIC Plants	0	0	0	0	0	0	0	0
Total internal production	993,888	130,578	137,371	137,650	136,918	147,642	153,101	150,629
(Load at Pumped Storage)	0	0	0	0	0	0	0	0
Net internal production	993,888	130,578	137,371	137,650	136,918	147,642	153,101	150,629
Percentage each company's production represents of the total internal production								
AGL	1.4%	1.8%	1.6%	1.3%	1.1%	1.1%	1.3%	1.6%
Anglesea	2.6%	2.9%	2.8%	2.4%	2.3%	2.6%	2.5%	2.5%
Babcock & Brown Power	0.0%	0.0%	0.0%	0.2%	0.0%	0.0%	0.0%	0.0%
Ecogen Energy	0.8%	0.0%	2.7%	2.6%	0.0%	0.0%	0.2%	0.1%
Energy Brix	2.4%	2.2%	2.5%	2.7%	2.6%	2.3%	2.3%	2.3%
International Power (Hazelwood)	22.2%	24.9%	24.4%	24.5%	24.0%	21.8%	18.1%	18.6%
Loy Yang B	17.4%	19.3%	18.4%	18.4%	17.6%	16.3%	15.9%	16.7%
Loy Yang Power	25.5%	20.5%	19.1%	19.0%	22.7%	27.5%	33.1%	34.5%
Snowy Hydro	3.1%	1.5%	3.0%	3.8%	4.4%	5.0%	3.6%	0.4%
TRUenergy	24.5%	26.9%	25.3%	25.2%	25.2%	23.4%	22.9%	23.3%
Other VIC Plants	0.0%	0.0%	0.0%	0.0%	0.0%	0.0%	0.0%	0.0%
Total Percentage	100.0%	100.0%	100.0%	100.0%	100.0%	100.0%	100.0%	100.0%

Current Week (continued)



	Sunday	Monday	Tuesday	Wednesday	Thursday	Friday	Saturday
For the Current Week							
Total Energy (MWh)	126,955	144,541	141,073	133,182	137,545	140,339	126,779
Trading Demand Target (MW)	Maximum	6,376	6,949	6,599	6,209	6,502	5,972
	Average	5,290	6,023	5,878	5,549	5,731	5,282
	Minimum	4,325	4,565	4,911	4,310	4,566	4,506
Regional Load Factor (%)	83%	87%	89%	89%	88%	88%	88%
Wholesale Electricity Price Index (WEPI)	N/A	37.92	37.31	36.73	39.73	39.84	N/A
	Maximum	119.93	41.40	32.43	34.96	55.19	47.68
	Volume-Weighted Ave	30.70	29.69	24.60	23.93	24.77	23.34
Trading Price (\$/MWh)	Time-Weighted Ave	29.43	28.94	24.36	23.32	24.08	25.99
	Minimum	14.20	17.76	18.43	13.34	11.44	12.12
	Maximum	12.6	14.7	19.4	23.6	16.6	14.7
Temperature °C (Melbourne)	7.7	8.5	9.1	12.1	13.5	11.0	11.0
Percentage Change from Same Week Last Year							
Total Energy (MWh)	5%	1%	-4%	-8%	-3%	-1%	-1%
Trading Demand Target (MW)	Maximum	9%	1%	-2%	-7%	-0%	1%
	Average	5%	1%	-4%	-8%	-3%	-1%
	Minimum	-0%	2%	-1%	-12%	-4%	-2%
Wholesale Electricity Price Index (WEPI)	N/A	-26%	-27%	-28%	-23%	-22%	N/A
Trading Price (\$/MWh)	Maximum	260%	-12%	-30%	-30%	-10%	-23%
	Volume-Weighted Ave	55%	-7%	-26%	-29%	-36%	-47%
	Time-Weighted Ave	51%	-6%	-25%	-29%	-36%	-46%
Temperature °C (Melbourne)	Minimum	24%	22%	39%	-7%	-29%	-43%
	Maximum	-39%	-3%	11%	5%	-32%	-44%
	Minimum	-34%	-6%	10%	81%	-6%	-4%
For the Same Week Last Year							
Total Energy (MWh)	121,042	143,447	146,254	144,508	141,298	141,448	128,165
Trading Demand Target (MW)	Maximum	5,826	6,904	6,767	6,671	6,525	6,605
	Average	5,043	5,977	6,094	6,021	5,887	5,894
	Minimum	4,335	4,484	4,972	4,916	4,734	4,654
Regional Load Factor (%)	87%	87%	90%	90%	90%	89%	90%
Wholesale Electricity Price Index (WEPI)	N/A	51.46	50.86	51.35	51.73	51.38	N/A
	Maximum	33.30	46.81	46.10	49.75	61.31	82.10
	Volume-Weighted Ave	19.85	32.04	33.25	33.79	38.59	50.15
Trading Price (\$/MWh)	Time-Weighted Ave	19.54	30.95	32.59	32.84	37.46	48.19
	Minimum	11.43	14.59	13.26	14.40	16.03	21.43
	Maximum	20.7	15.2	17.5	22.4	24.5	26.2
Temperature °C (Melbourne)	11.6	9.0	8.3	6.7	14.4	10.9	11.5

Long-Term Trends

This table contains electricity futures pricing, supplied by d-cyphatrade. All data other than flat and peak quarterly pricing is implied.

		CalYear	FinYear Ending	Q1	Q2	Q3	Q4
Actual Prices for Flat Load (All Times)	2009						29.00
	2010	39.13		51.85	35.00	35.00	34.90
	2011	43.76	40.56	57.25	35.40	41.30	41.30
	2012	60.33	53.71	79.00	53.50	55.60	

		CalYear	FinYear Ending	Q1	Q2	Q3	Q4
Actual Prices for Peak Load (7am-10pm M-F)	2009						42.00
	2010	59.09		91.50	48.25	48.00	50.00
	2011	69.25	62.40	102.00	51.20	58.20	66.55
	2012	80.08	80.05	145.20	51.20	58.20	

		CalYear	FinYear Ending	Q1	Q2	Q3	Q4
Implied Prices for Off-Peak Load (All other times)	2009						18.52
	2010	23.03		19.87	24.31	24.52	22.72
	2011	23.20	22.95	21.16	22.66	27.67	20.94
	2012	44.40	32.47	25.61	55.35	53.50	

