

**esaa is seeking a  
General Manager  
Strategic and  
International Policy to  
join its team in  
Melbourne.**

**See page 14 for further  
details.**

**This week's  
volume-weighted  
electricity price  
(\$/MWh)**

<b>NSW:</b>	<b>\$27.44</b>
<b>Vic:</b>	<b>\$26.39</b>
<b>Qld:</b>	<b>\$26.62</b>
<b>SA:</b>	<b>\$25.81</b>
<b>Tas:</b>	<b>\$22.45</b>

## Transforming Australia's energy system

Energy security is one of the defining issues of our time, according to Federal Energy Minister Martin Ferguson.

"Australia's abundance of energy resources provides an enormous competitive advantage for Australian industry. But the great challenge we face is to keep it that way," says Ferguson.

He says the domestic challenge is to transform Australia's energy generating systems to produce the energy required in the 21st century at the lowest possible price and carbon footprint.

According to Ferguson, the Federal Government's objective is to invest in a clean energy strategy which doesn't pick winners, yet acknowledges the need to make technological breakthroughs across a wide range of energy options.

The government is supporting the development of a broad suite of clean energy options through its \$4.5 billion Clean Energy initiative. Ferguson says the Carbon Pollution Reduction Scheme and the 20 per cent by 2020 Renewable Energy Target will also provide huge incentives for Australia's renewable sector. "The RET alone [equates] to a subsidy of more than \$20 billion to the sector," he says.

"The export challenges involve exploiting our resources of coal, uranium and gas in a way that advances the nation's economic and environmental interests while providing energy security for our trading partners.

"Playing our part in the development of technologies which will enable the world to use our resources sustainably is also part of the challenge," he says.

Ferguson says Australia's greatest contribution to reducing global greenhouse gas emissions is through a leadership role in the deployment of carbon capture and storage technologies, the expansion of the national uranium and liquefied natural gas sectors, and Australia's multibillion-dollar investment in clean energy technologies, including renewables and energy efficiency.

International Energy Agency forecasts show the proportion of global energy produced by coal increasing, not decreasing, throughout the coming three decades.

"China's coal production now exceeds that of all IEA member countries combined. In 2007, China produced more than 32 per cent of the world's coal-fired electricity. And in recent years, it has added new coal-fired generation at a rate that replicates Australia's entire coal-fired power sector every four months. In the coming decade China will bring online something in the order of 1,000 average-sized coal-fired power stations.

























Institute (US); Barry Dooley of Structural Integrity (US); Geoff Bignold from GJB Chemistry Power (UK); Harry Schaap of the National Generators Forum; and subject to final confirmation, Stephanie Marais of ESKOM (South Africa).

For more information, contact The Meetings Manager by phoning 02 9810 7322 or emailing [meetings@tmm.com.au](mailto:meetings@tmm.com.au).

## Jobs on Offer

### List industry jobs

esaa Full Members are invited to submit industry-related employment opportunities. This is a complimentary service. Email notices to [newseditor@esaa.com.au](mailto:newseditor@esaa.com.au) by close of business Thursday.

### General Manager Strategic and International

The Energy Supply Association of Australia (esaa) is the peak body representing electricity and downstream gas supply businesses in Australia.

As part of the executive group and reporting to the Chief Executive Officer the occupant of this new position will be a key contributor to the thought leadership and strategic policy development activity of the Association.

The position is primarily responsible for advising the Association's executive group on emerging medium and longer term strategic policy issues and challenges and developing appropriate fact-based options to address these. The position will marry international and domestic policy developments in energy markets, environmental objectives and technology development activities to inform the Australian stationary energy industry on emerging issues and key priorities for strategic policy attention.

Degree qualified in economics, commerce or business or possessing direct relevant industry experience, you will have an advanced appreciation of energy sector related policies and issues in relevant multilateral, regional and national fora, extensive, high level experience in the development of strategic policy, sound oral and written communication skills as well as the ability to interact with representatives of all levels of business and government.

To apply for this position, you should first obtain a position description, by contacting Marita Hodges on 03 9670 0188. Please email your application addressing each of the essential attributes for the position to [recruitment@esaa.com.au](mailto:recruitment@esaa.com.au) by Friday 30 October 2009. Should you wish to make further enquiries after obtaining the position description, please contact esaa CEO Brad Page on 03 9670 1017. A competitive remuneration package will be negotiated with the successful candidate.

## Energy & Greenhouse Policy Adviser

The Energy Supply Association of Australia (esaa) is seeking an Energy & Greenhouse Policy Adviser to support the development of esaa's energy policy and advocacy work.

Reporting to the Policy Development Manager, the successful applicant will be responsible for the preparation of high level briefing papers and submissions, researching and analysing policy developments and providing advice on a range of energy and greenhouse policy issues. Experience in the analysis of energy and carbon markets is highly regarded.

Degree qualified in either economics, law or engineering or possessing direct relevant industry experience, the successful candidate will have sound oral and written communication skills as well as the ability to interact with representatives of all levels of business and government.

To apply for this position, please email [recruitment@esaa.com.au](mailto:recruitment@esaa.com.au). For further information or to obtain a position description, please contact Marita Hodges on 03 9670 1017. A competitive salary will be negotiated with the successful candidate.

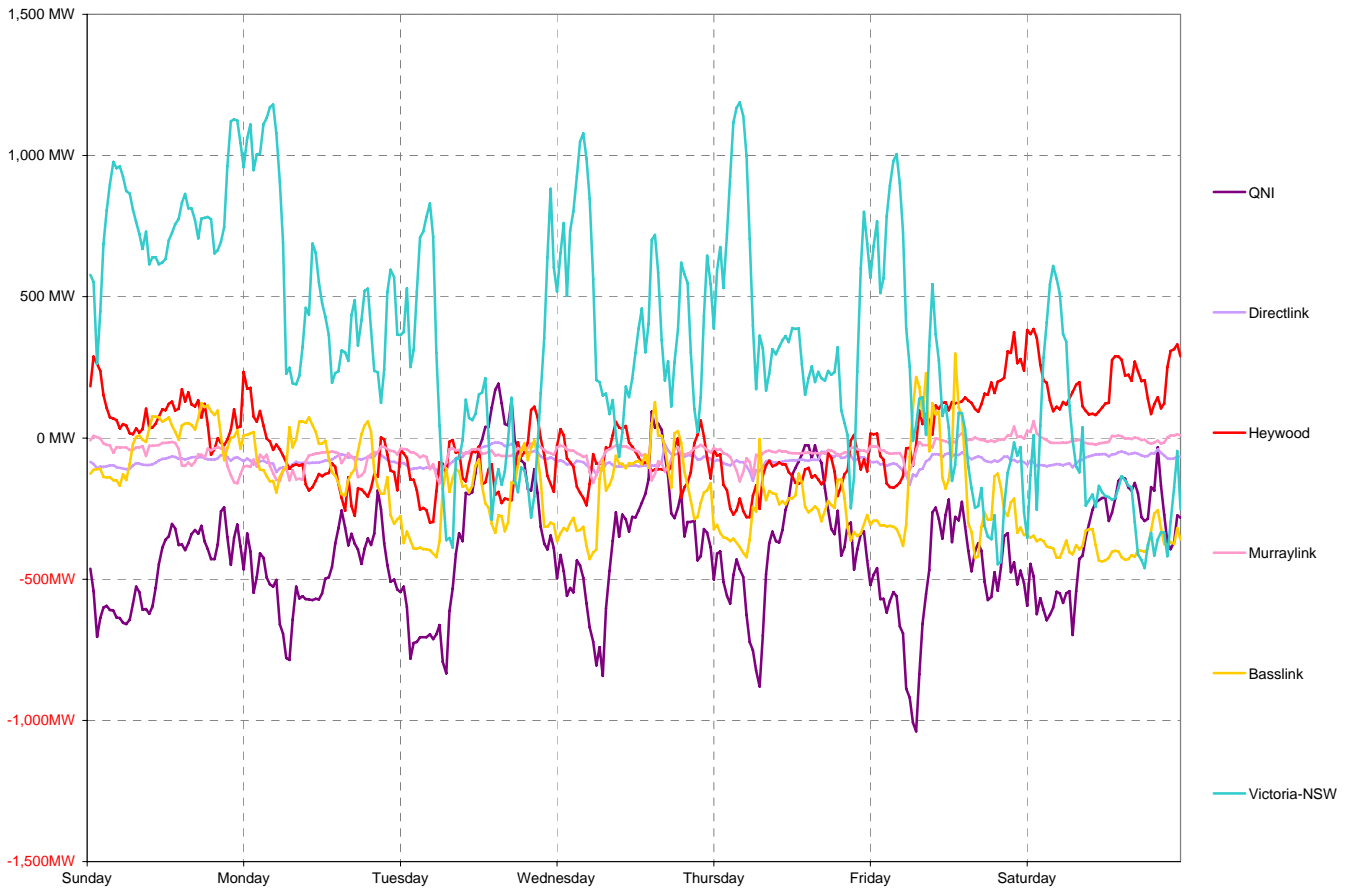
# National Electricity Market Report

Week 42 Ending Saturday 17-Oct-09

## Daily Inter-Regional Energy Flow

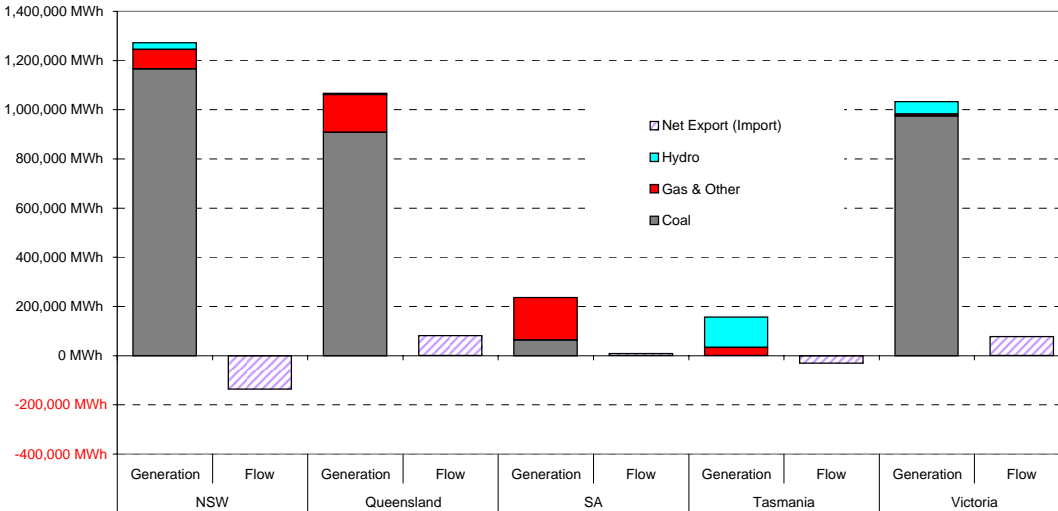
	Daily Net Exports (or Imports)							Weekly Total
	Sunday	Monday	Tuesday	Wednesday	Thursday	Friday	Saturday	
<b>For the Current Week</b>								
NSW	-31,828	-26,217	-12,540	-20,707	-20,694	-17,157	-7,659	-136,801
Queensland	13,220	13,334	9,171	10,652	10,715	14,060	10,162	81,312
South Australia	-795	4,224	4,081	3,213	4,702	-1,606	-4,581	9,238
Tasmania	-212	-2,066	-5,619	-4,046	-6,360	-4,008	-9,122	-31,431
Victoria	19,614	10,726	4,908	10,888	11,637	8,710	11,200	77,682
<b>MWh Change from Same Week Last Year</b>								
NSW	-7,672	-920	9,964	2,325	4,364	8,591	11,643	28,294
Queensland	3,124	-4,281	-10,925	-8,269	-12,863	-8,151	-8,189	-49,553
South Australia	-6,560	738	1,648	622	6,707	1,009	-4,155	8
Tasmania	1,270	-2,452	1,869	3,657	2,244	3,101	1,207	10,896
Victoria	9,839	6,914	-2,556	1,666	-451	-4,550	-506	10,356
<b>For the Same Week Last Year</b>								
NSW	-24,156	-25,297	-22,504	-23,032	-25,058	-25,748	-19,301	-165,095
Queensland	10,097	17,614	20,096	18,921	23,578	22,210	18,350	130,865
South Australia	5,766	3,486	2,433	2,591	-2,005	-2,615	-426	9,230
Tasmania	-1,482	386	-7,488	-7,703	-8,604	-7,108	-10,329	-42,327
Victoria	9,776	3,812	7,464	9,222	12,088	13,260	11,706	67,326

## Interconnector energy flow throughout the week

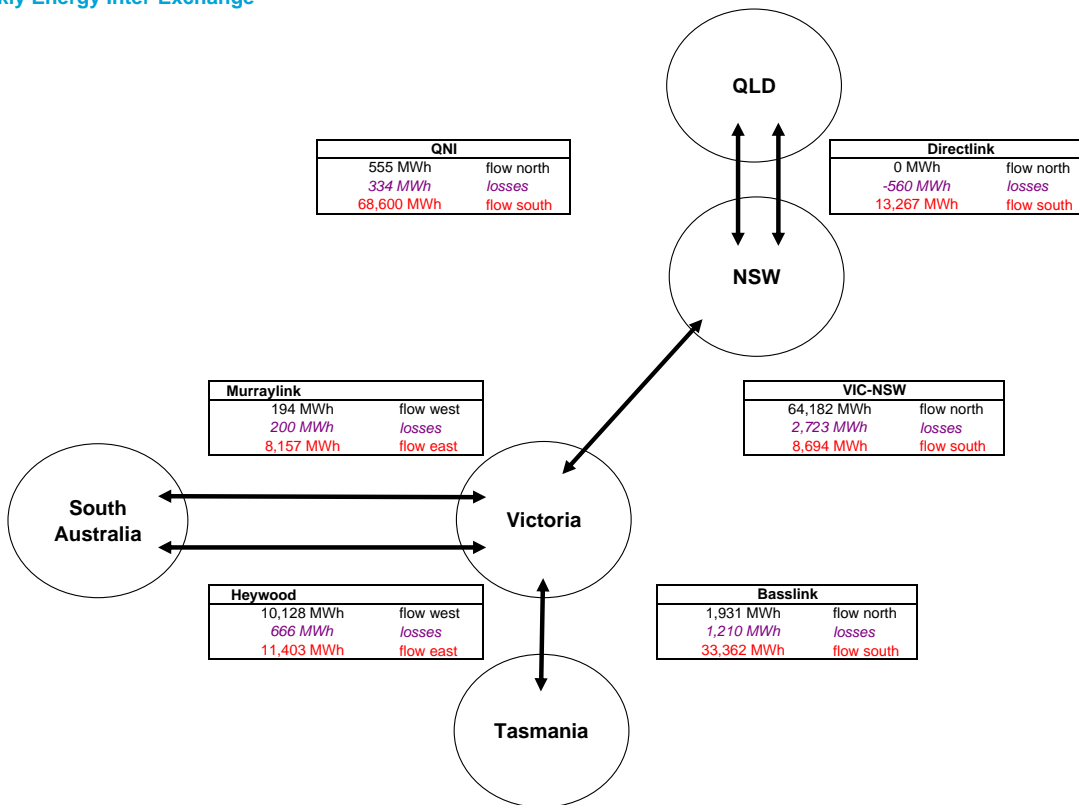


### Generation by Fuel Type

	All data in this table is shown in MWh for the week											
	NSW		Queensland		SA		Tasmania		Victoria		Whole of NEM	
	Generation	Flow	Generation	Flow	Generation	Flow	Generation	Flow	Generation	Flow	Generation	Flow
Coal	1,165,876		908,467		62,691		0		974,709		3,111,742	
Gas & Other	79,890		152,513		173,721		33,620		7,350		447,092	
Hydro	27,233		5,793		0		122,920		51,142		207,087	
Pump Storage	-8,581		-443		0		0		0		-9,024	
<b>Total Generation</b>	<b>1,264,417</b>		<b>1,066,330</b>		<b>236,412</b>		<b>156,540</b>		<b>1,033,200</b>		<b>3,756,897</b>	
Total Exports		9,248		81,867		19,560		1,931		107,865		
Total Imports		146,049		555		10,322		33,362		30,184		
<b>Net Export (Import)</b>		<b>-136,801</b>		<b>81,312</b>		<b>9,238</b>		<b>-31,431</b>		<b>77,682</b>		
Net Consumption	1,401,218		985,018		227,174		187,971		955,518			

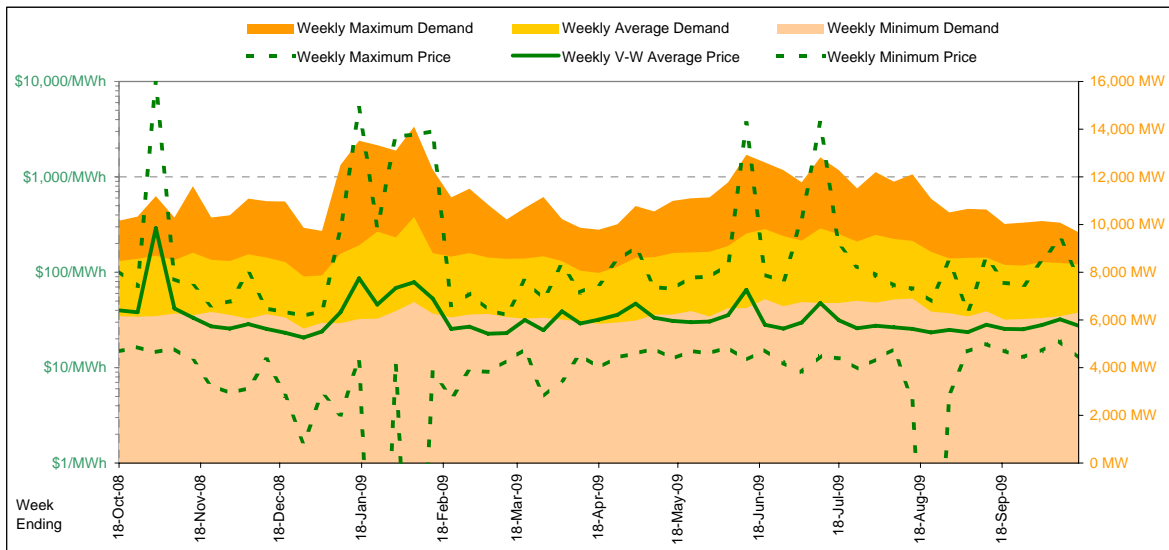


### Weekly Energy Inter-Exchange



Current Year

		Week 42 Ending Saturday			52-weeks ending Sat	
		17-Oct-09	% change	18-Oct-08	17-Oct-09	Date Occurred
Energy (MWh)	Total	1,399,605	-2%	1,422,014	77,019,406	
	Maximum	9,677	-5%	10,165	14,106	7-Feb-09
	Average	8,331	-2%	8,464	8,816	
Trading Demand (MW)	Maximum	6,304	2%	6,158	5,632	26-Dec-08
	Average	86%		83%	63%	
	Minimum					
Regional Load Factor (%)	Maximum	86.58	-16%	103.00	10000.00	
	Volume-Weighted Ave	27.44	-31%	39.84	39.13	
	Time-Weighted Ave	26.95	-30%	38.48	35.60	
	Minimum	12.55	-15%	14.82	-170.76	
Trading Price (\$/MWh)	Maximum	24.5	-16%	29.2	40.9	
	Minimum	11.3	-4%	11.8	5.9	

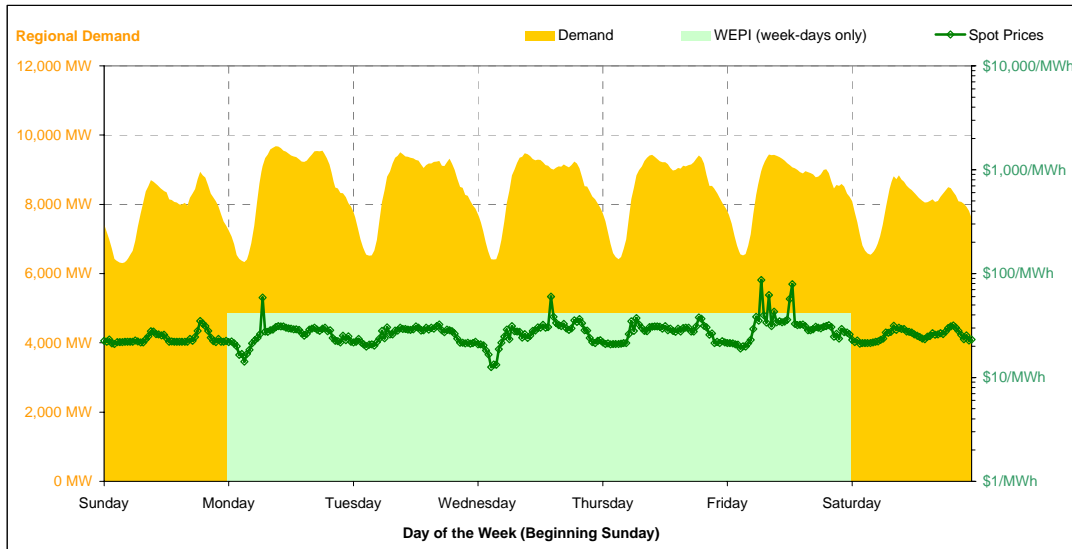


Note that prices below \$1/MWh have been reset to \$1/MWh for the purposes of this display

Current Week

All Data in this table is shown in MWh								
	Weekly Total	Sunday	Monday	Tuesday	Wednesday	Thursday	Friday	Saturday
<b>Total Production by Generation Company</b>								
Babcock & Brown Power	24,711	3,552	3,529	3,491	3,519	3,530	3,540	3,552
Delta Electricity	421,023	47,292	61,308	63,395	61,356	63,728	61,576	62,369
Eraring Energy	246,142	25,834	27,195	38,229	38,624	39,080	38,432	38,748
Macquarie Generation	482,075	71,423	75,292	75,055	66,036	62,789	65,192	66,288
Marubeni	15,587	1,920	2,348	2,349	2,350	2,351	2,350	1,920
Snowy Hydro (NSW)	26,416	1,309	4,233	2,953	3,929	5,059	6,666	2,268
TRUenergy	55,963	7,301	8,420	8,167	8,101	8,214	8,117	7,645
Origin Energy	1,084	0	0	0	0	0	1,084	0
Other NSW Plants	0	0	0	0	0	0	0	0
<b>Total internal production</b>	<b>1,272,998</b>	<b>158,631</b>	<b>182,323</b>	<b>193,638</b>	<b>183,913</b>	<b>184,750</b>	<b>186,956</b>	<b>182,789</b>
(Load at Pumped Storage)	-8,581	-2,565	-2,027	-1,758	-950	-1,282	0	0
<b>Net internal production</b>	<b>1,264,417</b>	<b>156,066</b>	<b>180,296</b>	<b>191,881</b>	<b>182,963</b>	<b>183,468</b>	<b>186,956</b>	<b>182,789</b>
<b>Percentage each company's production represents of the total internal production</b>								
Babcock & Brown Power	1.9%	2.2%	1.9%	1.8%	1.9%	1.9%	1.9%	1.9%
Delta Electricity	33.1%	29.8%	33.6%	32.7%	33.4%	34.5%	32.9%	34.1%
Eraring Energy	19.3%	16.3%	14.9%	19.7%	21.0%	21.2%	20.6%	21.2%
Macquarie Generation	37.9%	45.0%	41.3%	38.8%	35.9%	34.0%	34.9%	36.3%
Marubeni	1.2%	1.2%	1.3%	1.2%	1.3%	1.3%	1.3%	1.1%
Snowy Hydro (NSW)	2.1%	0.8%	2.3%	1.5%	2.1%	2.7%	3.6%	1.2%
TRUenergy	4.4%	4.6%	4.6%	4.2%	4.4%	4.4%	4.3%	4.2%
Origin Energy	0.1%	0.0%	0.0%	0.0%	0.0%	0.0%	0.6%	0.0%
Other NSW Plants	0.0%	0.0%	0.0%	0.0%	0.0%	0.0%	0.0%	0.0%
<b>Total Percentage</b>	<b>100.0%</b>	<b>100.0%</b>	<b>100.0%</b>	<b>100.0%</b>	<b>100.0%</b>	<b>100.0%</b>	<b>100.0%</b>	<b>100.0%</b>

Current Week (continued)



	Sunday	Monday	Tuesday	Wednesday	Thursday	Friday	Saturday
<b>For the Current Week</b>							
Total Energy (MWh)	187,308	206,191	204,259	203,524	203,993	203,957	190,374
Trading Demand Target (MW)	Maximum	8,938	9,677	9,501	9,472	9,434	8,834
	Average	7,804	8,591	8,511	8,480	8,500	7,932
	Minimum	6,304	6,329	6,515	6,404	6,413	6,525
Regional Load Factor (%)	87%	89%	90%	90%	90%	90%	90%
Wholesale Electricity Price Index (WEPI)	N/A	41.56	41.49	41.45	41.54	41.94	N/A
	Maximum	34.92	58.76	32.43	59.90	37.81	86.58
	Volume-Weighted Ave	24.03	26.81	26.31	27.75	27.82	33.27
	Time-Weighted Ave	23.84	26.23	25.95	27.15	27.41	32.56
Trading Price (\$/MWh)	Minimum	20.95	14.19	19.88	12.55	20.87	18.94
	Maximum	19.3	22.6	24.5	22.1	23.0	21.2
	Minimum	11.8	11.3	17.0	15.2	13.8	11.8
Temperature °C (Sydney)							
<b>Percentage Change from Same Week Last Year</b>							
Total Energy (MWh)	2%	-3%	-3%	-2%	-2%	-2%	-0%
Trading Demand Target (MW)	Maximum	2%	-5%	-3%	-1%	-1%	-2%
	Average	2%	-3%	-3%	-2%	-2%	-2%
	Minimum	2%	0%	-2%	-4%	-5%	-3%
Wholesale Electricity Price Index (WEPI)	N/A	-12%	-14%	-13%	-13%	-12%	N/A
	Maximum	20%	3%	-51%	-42%	-50%	-36%
	Volume-Weighted Ave	11%	-24%	-33%	-38%	-41%	-29%
	Time-Weighted Ave	11%	-22%	-33%	-38%	-41%	-28%
Trading Price (\$/MWh)	Minimum	20%	-4%	-11%	-43%	-16%	-0%
	Maximum	-14%	-23%	17%	17%	4%	-15%
	Minimum	-17%	-30%	2%	1%	17%	-31%
Temperature °C (Sydney)							
<b>For the Same Week Last Year</b>							
Total Energy (MWh)	182,853	211,645	211,402	208,423	208,456	208,275	190,961
Trading Demand Target (MW)	Maximum	8,774	10,165	9,838	9,521	9,496	8,861
	Average	7,619	8,819	8,808	8,684	8,686	8,678
	Minimum	6,158	6,320	6,680	6,661	6,741	6,387
Regional Load Factor (%)	87%	87%	90%	91%	91%	90%	90%
Wholesale Electricity Price Index (WEPI)	N/A	47.36	48.09	47.66	47.99	47.54	N/A
	Maximum	29.20	57.10	66.44	103.00	75.18	90.42
	Volume-Weighted Ave	21.56	35.23	39.33	44.55	47.50	51.91
	Time-Weighted Ave	21.43	33.78	38.51	43.45	46.45	50.27
Trading Price (\$/MWh)	Minimum	17.43	14.82	22.41	21.91	24.77	22.84
	Maximum	22.5	29.2	21.0	18.9	22.1	24.9
	Minimum	11.8	16.1	16.6	15.1	11.8	12.9
Temperature °C (Sydney)							

Long-Term Trends

This table contains electricity futures pricing, supplied by d-cyphatrade. All data other than flat and peak quarterly pricing is implied.

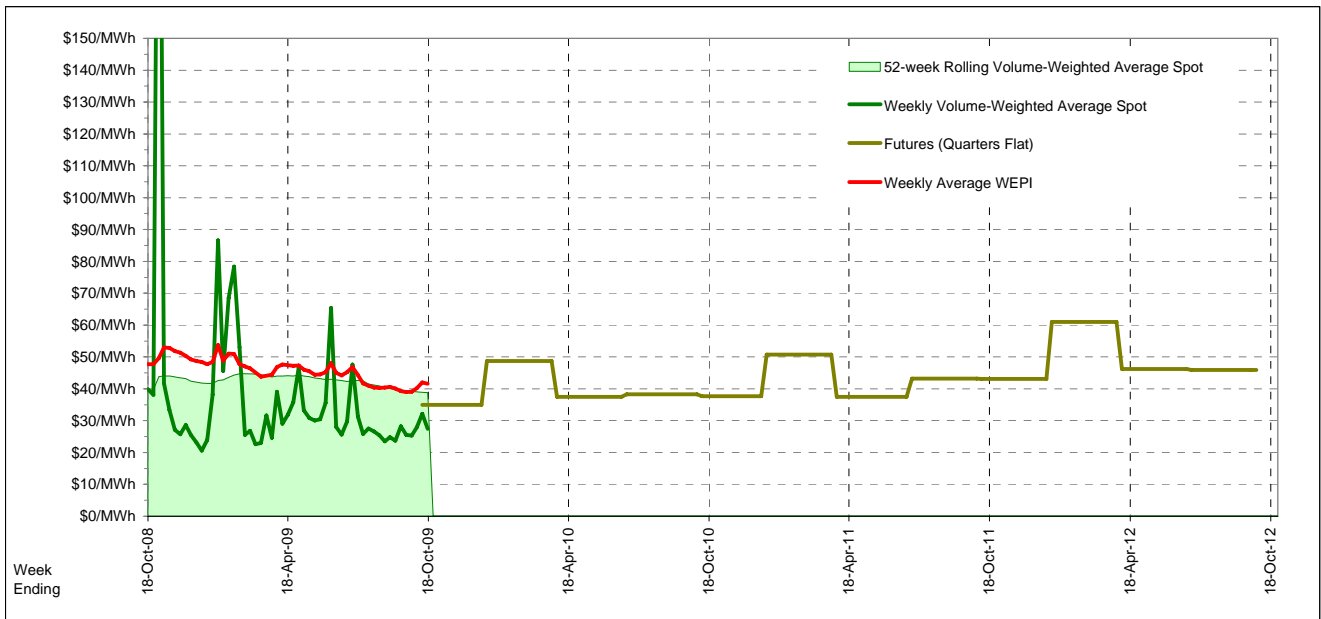
Futures settlement prices for flat load (all times)		CaYear	FinYear Ending	Q1	Q2	Q3	Q4
2009							35.00
2010		40.49		48.70	37.50	38.25	37.65
2011		43.64	40.99	50.75	37.50	43.25	43.15
2012		49.99	48.38	61.00	46.25	45.95	

Futures settlement prices for peak load (7am-10pm M-F)		CaYear	FinYear Ending	Q1	Q2	Q3	Q4
2009							51.75
2010		60.12		79.75	53.50	53.15	54.50
2011		63.95	61.32	84.15	54.00	59.75	58.00
2012		54.63	61.16	78.25	48.25	49.00	

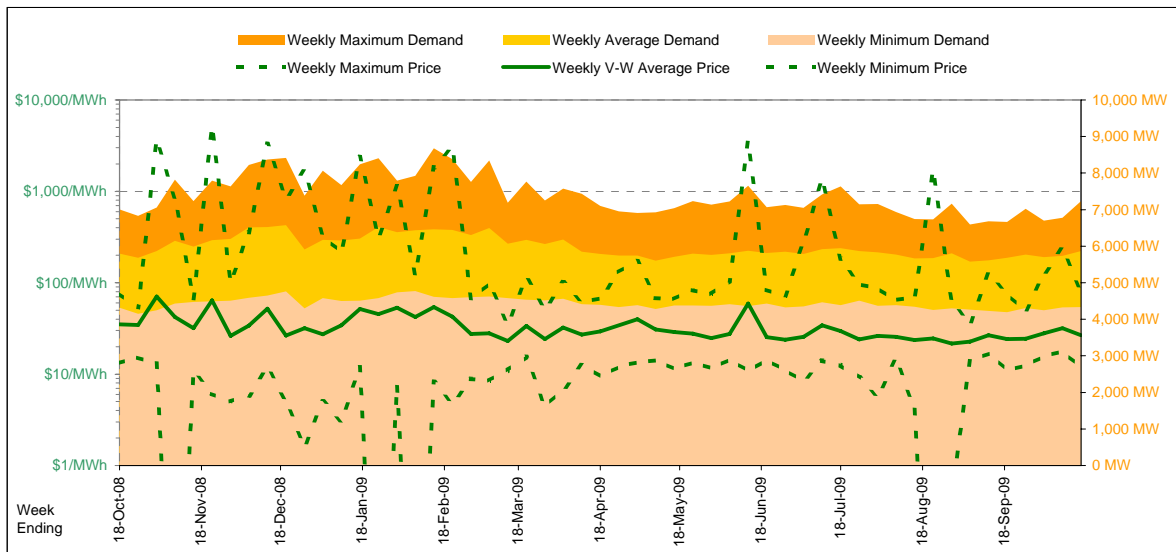
  

Implied Prices for Off-Peak Load (All other times)		CaYear	FinYear Ending	Q1	Q2	Q3	Q4
2009							21.49
2010		24.66		23.66	24.60	26.23	24.06
2011		27.26	24.59	23.81	24.19	29.94	31.17
2012		46.25	38.07	47.09	44.64	43.49	



Current Year

Energy (MWh)	Total	Week 42 Ending Saturday		52-Weeks Ending Sat		Date Occurred
		17-Oct-09	% change	18-Oct-08	17-Oct-09	
		985,116	1%	973,390	52,281,557	
Trading Demand (MW)	Maximum	7,236	3%	7,008	8,677	9-Feb-09
	Average	5,864	1%	5,794	5,985	
	Minimum	4,333	0%	4,313	4,150	25-Oct-08
Regional Load Factor (%)		81%		83%	69%	
Trading Price (\$/MWh)	Maximum	79.47	3%	76.84	5061.39	
	Volume-Weighted Ave	26.62	-24%	35.02	33.49	
	Time-Weighted Ave	25.90	-23%	33.67	31.41	
	Minimum	11.94	-10%	13.25	-180.89	
Temperature °C (Brisbane)	Maximum	35.0	29%	27.2	36.1	
	Minimum	12.1	-2%	12.3	5.5	

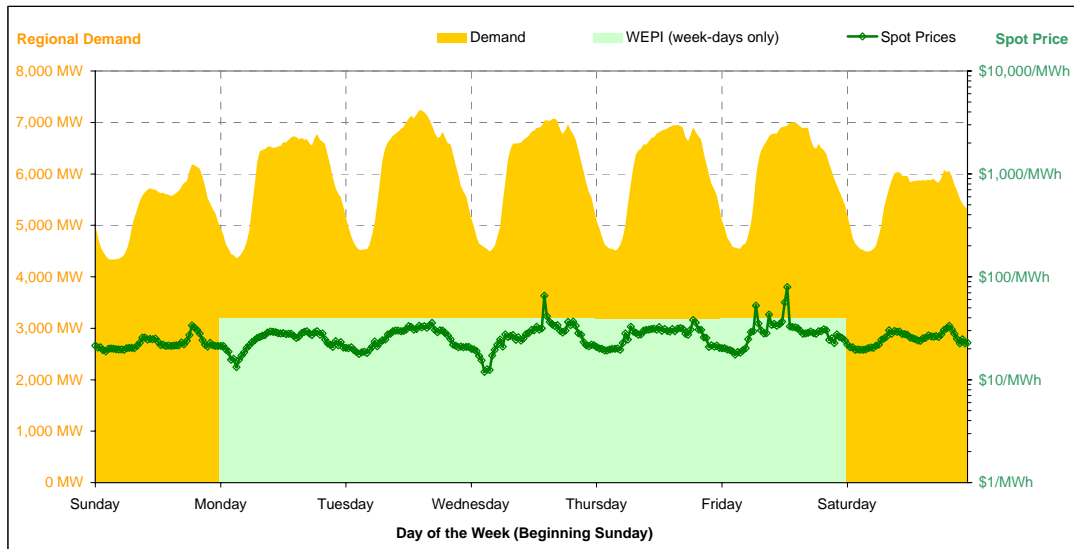


Note that prices below \$1/MWh have been reset to \$1/MWh for the purposes of this display

Current Week

All Data in this table is shown in MWh								
	Weekly Total	Sunday	Monday	Tuesday	Wednesday	Thursday	Friday	Saturday
<b>Total Production by Generation Company</b>								
AGL	25,411	0	4,156	4,726	4,702	4,713	4,404	2,711
Babcock & Brown Power	23,282	1,621	3,589	3,520	3,586	3,612	3,681	3,675
Braemar 2 Partnership	48,117	7,031	6,780	6,974	7,101	7,087	7,488	5,658
Callide Power Trading	50,603	4,702	8,416	8,584	8,345	9,017	9,387	2,153
CS Energy	261,723	38,581	38,801	37,169	37,020	35,895	38,341	35,916
Millmerran Energy Trader	141,271	20,562	20,671	19,963	20,402	19,766	19,993	19,915
Origin Energy	7,252	670	208	780	838	1,267	1,729	1,761
Stanwell	336,640	45,383	48,087	48,798	49,117	49,553	49,345	46,359
Tarong Energy	171,543	21,993	25,073	25,715	25,558	25,389	24,574	23,242
Tarong North Trader	0	0	0	0	0	0	0	0
Other QLD Plants	933	97	6	88	258	4	372	109
<b>Total internal production</b>	<b>1,066,773</b>	<b>140,638</b>	<b>155,785</b>	<b>156,315</b>	<b>156,926</b>	<b>156,301</b>	<b>159,312</b>	<b>141,497</b>
(Load at Pumped Storage)	-443	0	0	0	0	-443	0	0
<b>Net internal production</b>	<b>1,066,330</b>	<b>140,638</b>	<b>155,785</b>	<b>156,315</b>	<b>156,926</b>	<b>155,858</b>	<b>159,312</b>	<b>141,497</b>
<b>Percentage each company's production represents of the total internal production</b>								
AGL	2.4%	0.0%	2.7%	3.0%	3.0%	3.0%	2.8%	1.9%
Babcock & Brown Power	2.2%	1.2%	2.3%	2.3%	2.3%	2.3%	2.3%	2.6%
Braemar 2 Partnership	4.5%	5.0%	4.4%	4.5%	4.5%	4.5%	4.7%	4.0%
Callide Power Trading	4.7%	3.3%	5.4%	5.5%	5.3%	5.8%	5.9%	1.5%
CS Energy	24.5%	27.4%	24.9%	23.8%	23.6%	23.0%	24.1%	25.4%
Millmerran Energy Trader	13.2%	14.6%	13.3%	12.8%	13.0%	12.6%	12.5%	14.1%
Origin Energy	0.7%	0.5%	0.1%	0.5%	0.5%	0.8%	1.1%	1.2%
Stanwell	31.6%	32.3%	30.9%	31.2%	31.3%	31.7%	31.0%	32.8%
Tarong Energy	16.1%	15.6%	16.1%	16.5%	16.3%	16.2%	15.4%	16.4%
Tarong North Trader	0.0%	0.0%	0.0%	0.0%	0.0%	0.0%	0.0%	0.0%
Other QLD Plants	0.1%	0.1%	0.0%	0.1%	0.2%	0.0%	0.2%	0.1%
<b>Total Percentage</b>	<b>100.0%</b>	<b>100.0%</b>	<b>100.0%</b>	<b>100.0%</b>	<b>100.0%</b>	<b>100.0%</b>	<b>100.0%</b>	<b>100.0%</b>

Current Week (continued)



	Sunday	Monday	Tuesday	Wednesday	Thursday	Friday	Saturday
<b>For the Current Week</b>							
Total Energy (MWh)	127,415	142,482	147,104	146,311	145,186	145,238	131,382
Trading Demand Target (MW)	Maximum	6,177	6,777	7,236	7,075	6,947	7,007
	Average	5,309	5,937	6,129	6,096	6,049	6,052
	Minimum	4,333	4,362	4,521	4,493	4,508	4,548
Regional Load Factor (%)	86%	88%	85%	86%	87%	86%	90%
Wholesale Electricity Price Index (WEPI)	N/A	39.78	39.77	39.50	39.19	39.88	N/A
	Maximum	33.69	29.68	35.72	65.41	38.10	79.47
	Volume-Weighted Ave	22.90	24.98	26.57	27.89	27.49	30.62
	Time-Weighted Ave	22.63	24.39	25.82	26.87	26.85	29.74
Trading Price (\$/MWh)	Minimum	18.90	13.29	17.86	11.94	19.30	17.49
	Maximum	22.4	26.8	35.0	31.4	31.0	29.6
Temperature °C (Brisbane)	Minimum	15.0	13.0	18.3	16.6	12.1	12.9
	Maximum	15.0	13.0	18.3	16.6	12.1	12.9
<b>Percentage Change from Same Week Last Year</b>							
Total Energy (MWh)	-1%	0%	2%	0%	1%	3%	3%
Trading Demand Target (MW)	Maximum	-3%	1%	5%	1%	2%	6%
	Average	-1%	0%	2%	0%	1%	3%
	Minimum	0%	1%	2%	-1%	-1%	0%
Wholesale Electricity Price Index (WEPI)	N/A	-27%	-28%	-28%	-29%	-27%	N/A
	Maximum	16%	-43%	-41%	-5%	-43%	3%
	Volume-Weighted Ave	9%	-23%	-25%	-27%	-33%	-22%
	Time-Weighted Ave	9%	-22%	-26%	-27%	-32%	-28%
Trading Price (\$/MWh)	Minimum	22%	0%	-14%	-39%	-4%	-10%
	Maximum	3%	10%	40%	15%	37%	28%
Temperature °C (Brisbane)	Minimum	-4%	-13%	2%	-5%	-28%	-13%
	Maximum	-4%	-13%	2%	-5%	-28%	-13%
<b>For the Same Week Last Year</b>							
Total Energy (MWh)	128,776	141,901	144,159	145,988	143,812	140,952	127,804
Trading Demand Target (MW)	Maximum	6,345	6,725	6,880	7,008	6,780	6,632
	Average	5,366	5,913	6,007	6,083	5,992	5,873
	Minimum	4,313	4,332	4,428	4,520	4,542	4,542
Regional Load Factor (%)	85%	88%	87%	87%	88%	89%	90%
Wholesale Electricity Price Index (WEPI)	N/A	54.52	55.27	55.07	55.06	54.65	N/A
	Maximum	29.01	52.42	60.47	68.59	66.92	76.84
	Volume-Weighted Ave	21.06	32.43	35.61	38.07	41.06	42.94
	Time-Weighted Ave	20.82	31.08	34.79	36.75	39.59	41.15
Trading Price (\$/MWh)	Minimum	15.49	13.25	20.66	19.53	20.01	19.39
	Maximum	21.7	24.3	25.0	27.2	22.6	23.1
Temperature °C (Brisbane)	Minimum	15.6	15.0	18.0	17.4	16.9	14.9
	Maximum	15.6	15.0	18.0	17.4	16.9	14.9

Long-Term Trends

This table contains electricity futures pricing, supplied by d-cyphatrade. All data other than flat and peak quarterly pricing is implied.

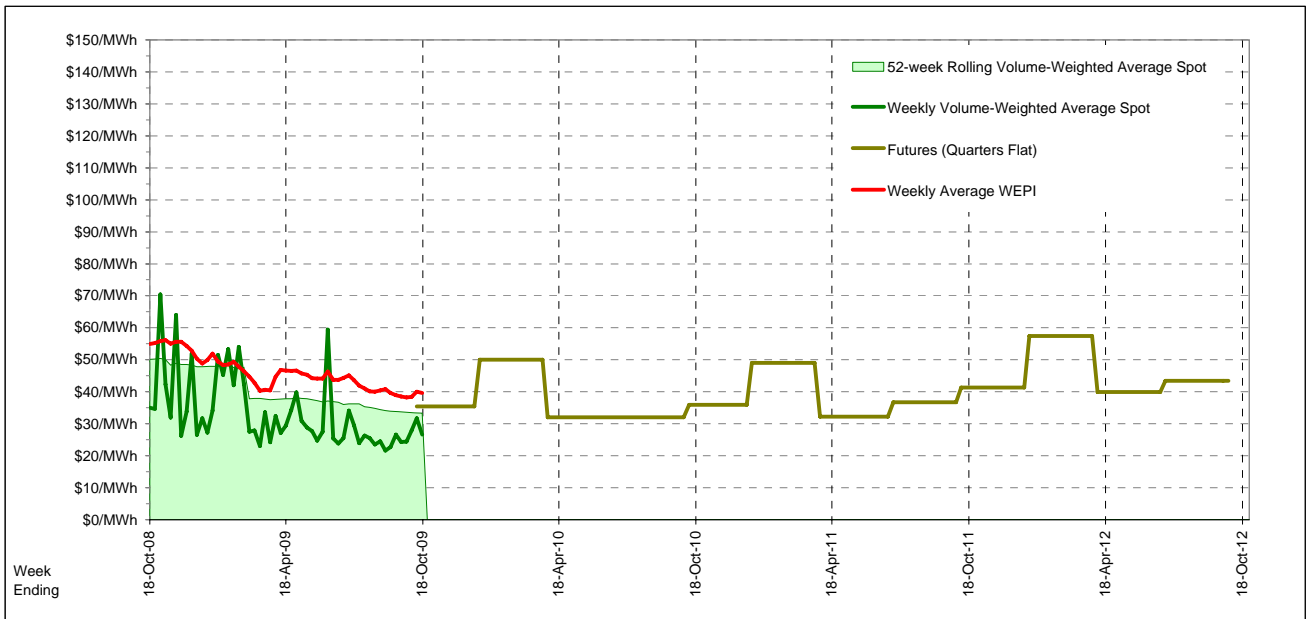
Futures settlement prices for flat load (all times)		CalYear	FinYear Ending	Q1	Q2	Q3	Q4
		2009					35.40
		2010	37.42	50.00	32.00	32.00	35.90
		2011	39.78	49.00	32.25	36.70	41.30
		2012	48.00	57.45	39.95	43.45	

Futures settlement prices for peak load (7am-10pm M-F)		CalYear	FinYear Ending	Q1	Q2	Q3	Q4
		2009					48.00
		2010	55.25	82.50	43.00	44.75	51.00
		2011	62.91	81.75	44.00	59.40	66.00
		2012	76.41	120.00	55.00	60.00	

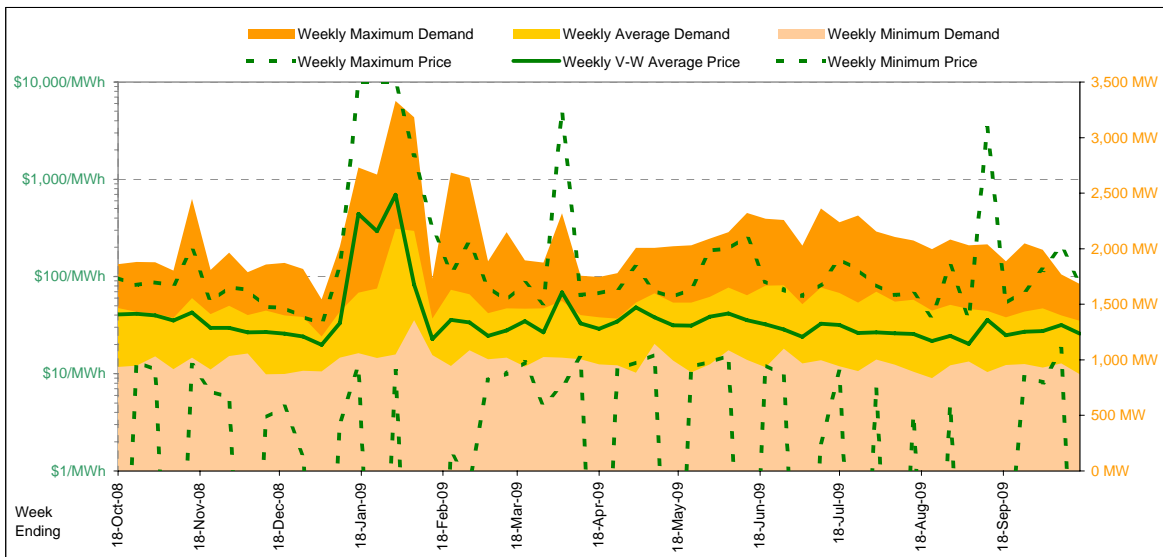
  

Implied Prices for Off-Peak Load (All other times)		CalYear	FinYear Ending	Q1	Q2	Q3	Q4
		2009					25.24
		2010	23.04	23.79	23.13	21.72	23.72
		2011	21.13	22.68	22.77	18.39	21.38
		2012	25.09	7.01	27.81	30.10	



Current Year

		Week 42 Ending Saturday			52-Weeks Ending Sat	
		17-Oct-09	% change	18-Oct-08	17-Oct-09	Date Occurred
Energy (MWh)	Total	227,070	-8%	246,485	13,225,750	
	Maximum	1,681	-10%	1,861	3,331	28-Jan-09
	Average	1,352	-8%	1,467	1,514	
Trading Demand (MW)	Minimum	871	-7%	935	834	16-Aug-09
	Regional Load Factor (%)	80%		79%	45%	
Trading Price (\$/MWh)	Maximum	86.01	-11%	96.70	9999.92	
	Volume-Weighted Ave	25.81	-37%	40.86	65.04	
	Time-Weighted Ave	24.93	-36%	38.71	47.37	
	Minimum	-44.36	-3,393%	-1.27	-1000.00	
Temperature °C (Adelaide)	Maximum	27.6	-20%	34.6	45.7	
	Minimum	9.5	14%	8.3	2.9	

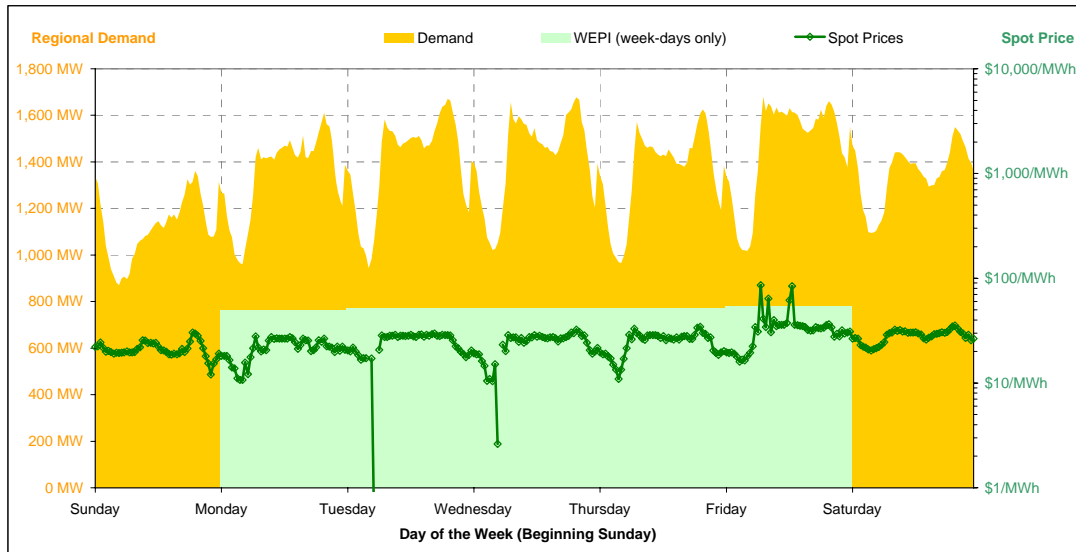


Note that prices below \$1/MWh have been reset to \$1/MWh for the purposes of this display

Current Week

All Data in this table is shown in MWh								
	Weekly Total	Sunday	Monday	Tuesday	Wednesday	Thursday	Friday	Saturday
<b>Total Production by Generation Company</b>								
AGL	49,321	5,299	7,195	8,132	8,319	7,683	7,990	4,704
International Power (Pelican Point)	62,549	5,191	9,319	9,375	9,367	9,530	9,884	9,885
International Power (Synergen)	0	0	0	0	0	0	0	0
Flinders Power	73,617	7,463	11,621	11,753	11,532	11,831	10,371	9,047
Origin Energy	11,373	2,184	2,233	1,816	2,233	2,427	482	0
Osborne	22,838	3,028	3,115	3,170	3,183	3,194	3,591	3,559
TRUenergy	3	0	0	0	3	0	0	0
Other SA Plants	16,712	2,924	3,151	3,435	2,676	2,576	1,254	697
<b>Total internal production</b>	<b>236,412</b>	<b>26,088</b>	<b>36,632</b>	<b>37,680</b>	<b>37,312</b>	<b>37,240</b>	<b>33,570</b>	<b>27,891</b>
(Load at Pumped Storage)	0	0	0	0	0	0	0	0
<b>Net internal production</b>	<b>236,412</b>	<b>26,088</b>	<b>36,632</b>	<b>37,680</b>	<b>37,312</b>	<b>37,240</b>	<b>33,570</b>	<b>27,891</b>
<b>Percentage each company's production represents of the total internal production</b>								
AGL	20.9%	20.3%	19.6%	21.6%	22.3%	20.6%	23.8%	16.9%
International Power (Pelican Point)	26.5%	19.9%	25.4%	24.9%	25.1%	25.6%	29.4%	35.4%
International Power (Synergen)	0.0%	0.0%	0.0%	0.0%	0.0%	0.0%	0.0%	0.0%
Flinders Power	31.1%	28.6%	31.7%	31.2%	30.9%	31.8%	30.9%	32.4%
Origin Energy	4.8%	8.4%	6.1%	4.8%	6.0%	6.5%	1.4%	0.0%
Osborne	9.7%	11.6%	8.5%	8.4%	8.5%	8.6%	10.7%	12.8%
TRUenergy	0.0%	0.0%	0.0%	0.0%	0.0%	0.0%	0.0%	0.0%
Other SA Plants	7.1%	11.2%	8.6%	9.1%	7.2%	6.9%	3.7%	2.5%
<b>Total Percentage</b>	<b>100.0%</b>	<b>100.0%</b>	<b>100.0%</b>	<b>100.0%</b>	<b>100.0%</b>	<b>100.0%</b>	<b>100.0%</b>	<b>100.0%</b>

Current Week (continued)



	Sunday	Monday	Tuesday	Wednesday	Thursday	Friday	Saturday
<b>For the Current Week</b>							
Total Energy (MWh)	26,873	32,385	33,587	34,089	32,522	35,163	32,451
Trading Demand Target (MW)	Maximum	1,361	1,611	1,671	1,678	1,625	1,681
	Average	1,120	1,349	1,399	1,420	1,355	1,465
	Minimum	871	960	943	1,022	965	1,018
Regional Load Factor (%)	82%	84%	84%	85%	83%	87%	87%
Wholesale Electricity Price Index (WEPI)	N/A	48.93	51.52	51.31	51.71	54.20	N/A
	Maximum	30.39	27.81	29.74	32.24	34.47	86.01
	Volume-Weighted Ave	21.32	22.07	24.09	23.32	25.33	34.79
Trading Price (\$/MWh)	Time-Weighted Ave	21.13	21.54	23.19	22.27	24.69	33.59
	Minimum	12.11	10.70	-4.99	-44.36	10.97	15.98
	Maximum	27.6	16.4	16.0	16.5	16.1	16.2
Temperature °C (Adelaide)	Minimum	15.9	12.3	10.4	11.6	12.1	9.5
<b>Percentage Change from Same Week Last Year</b>							
Total Energy (MWh)	-8%	-10%	-12%	-9%	-11%	-5%	1%
Trading Demand Target (MW)	Maximum	-5%	-6%	-4%	-5%	-8%	-4%
	Average	-8%	-10%	-12%	-9%	-11%	-5%
	Minimum	-7%	-6%	-23%	-15%	-15%	-9%
Wholesale Electricity Price Index (WEPI)	N/A	-27%	-25%	-23%	-23%	-21%	N/A
Trading Price (\$/MWh)	Maximum	8%	-51%	-53%	-65%	-58%	-40%
	Volume-Weighted Ave	20%	-34%	-38%	-47%	-51%	-39%
	Time-Weighted Ave	24%	-33%	-40%	-48%	-51%	-38%
Temperature °C (Adelaide)	Minimum	1,054%	12%	-121%	-303%	-57%	73%
	Maximum	-13%	-14%	-13%	-17%	-37%	-50%
	Minimum	19%	-5%	16%	40%	27%	-35%
<b>For the Same Week Last Year</b>							
Total Energy (MWh)	29,292	36,009	38,026	37,311	36,722	37,153	31,974
Trading Demand Target (MW)	Maximum	1,427	1,717	1,748	1,775	1,766	1,861
	Average	1,220	1,500	1,584	1,555	1,530	1,548
	Minimum	935	1,018	1,225	1,205	1,137	1,119
Regional Load Factor (%)	86%	87%	91%	88%	87%	83%	82%
Wholesale Electricity Price Index (WEPI)	N/A	67.46	68.31	66.74	67.03	68.27	N/A
	Maximum	28.18	56.93	63.79	92.65	81.75	96.70
	Volume-Weighted Ave	17.77	33.48	39.09	43.88	51.92	56.83
Trading Price (\$/MWh)	Time-Weighted Ave	17.06	32.00	38.55	42.91	50.39	54.24
	Minimum	-1.27	9.59	24.31	21.87	25.77	22.53
	Maximum	31.9	19.0	18.4	19.8	25.5	31.0
Temperature °C (Adelaide)	Minimum	13.4	13.0	9.0	8.3	9.5	16.0

Long-Term Trends

This table contains electricity futures pricing, supplied by d-cyphatrade. All data other than flat and peak quarterly pricing is implied.

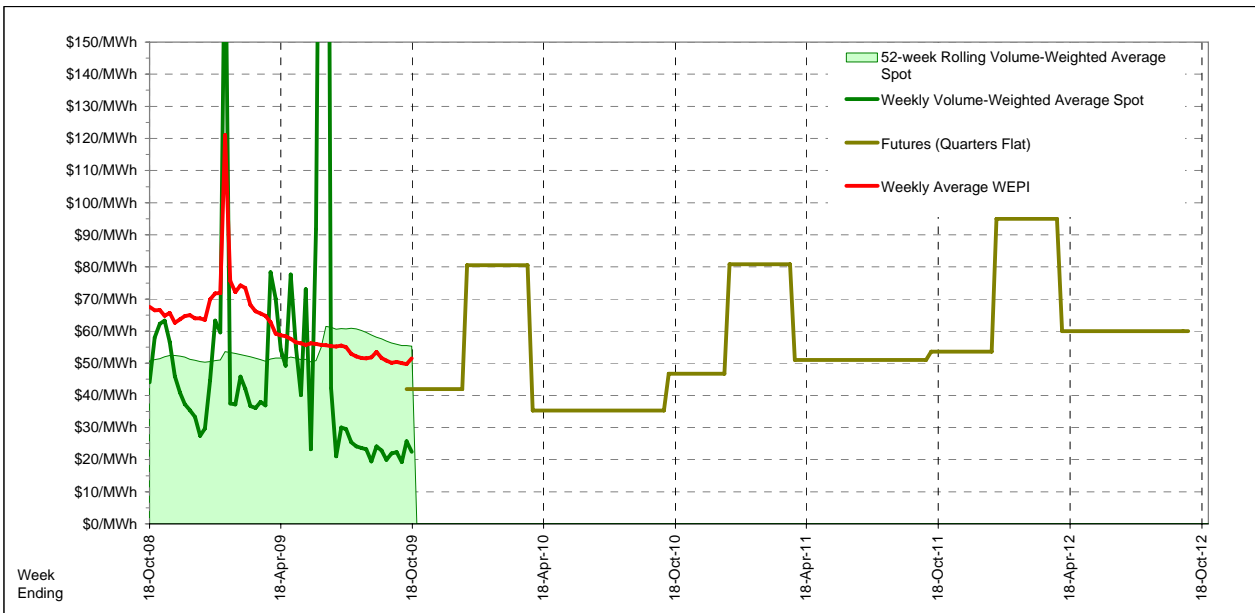
<i>Futures settlement prices</i> for flat load (all times)	CalYear	FinYear Ending	Q1	Q2	Q3	Q4
2009						42.00
2010	49.32		80.50	35.25	35.30	46.75
2011	59.00	53.32	80.80	51.00	51.00	53.60
2012	69.46	64.83	95.00	60.00	60.00	

<i>Futures settlement prices</i> for peak load (7am-10pm M-F)	CalYear	FinYear Ending	Q1	Q2	Q3	Q4
2009						86.50
2010	82.86		145.00	63.00	51.00	74.00
2011	66.67	71.11	100.00	61.00	61.00	45.50
2012	56.06	60.85	100.00	36.50	42.75	

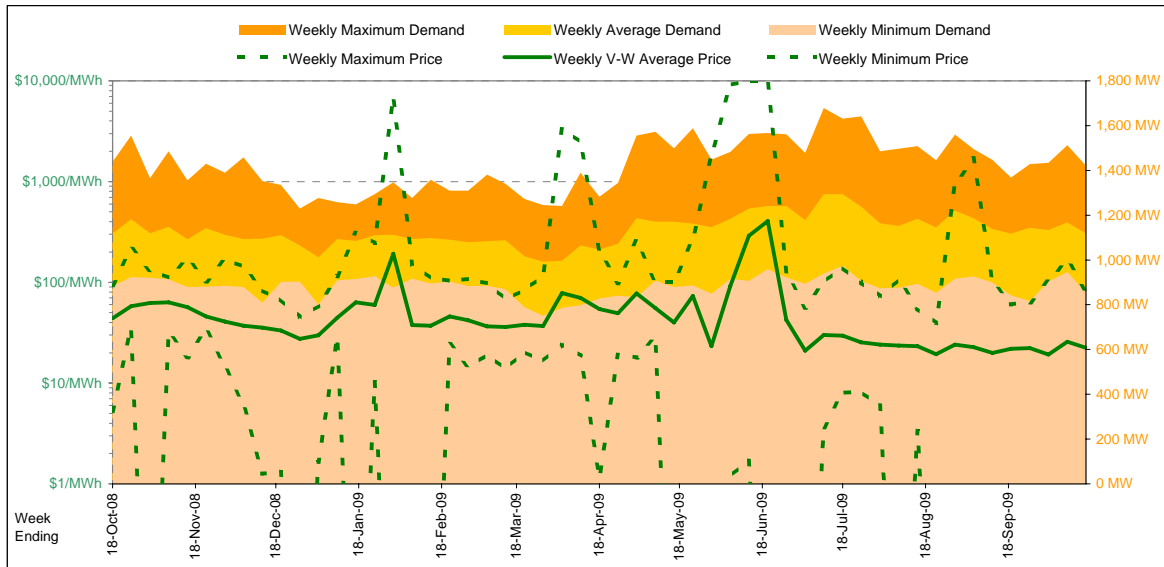
  

<i>Implied Prices</i> for Off-Peak Load (All other times)	CalYear	FinYear Ending	Q1	Q2	Q3	Q4
2009						6.11
2010	22.27		28.48	12.87	22.64	24.77
2011	52.81	38.97	65.32	42.94	42.94	60.13
2012	80.27	68.04	90.97	78.95	73.91	



Current Year

		Week 42 Ending Saturday			52-Weeks Ending Sat	
		17-Oct-09	% change	18-Oct-08	17-Oct-09	Date Occurred
Energy (MWh)	Total	187,939	0%	187,849	9,895,576	
	Maximum	1,421	-1%	1,438	1,679	9-Jul-09
	Average	1,119	0%	1,118	1,133	
Trading Demand (MW)	Minimum	853	-3%	883	751	22-Mar-09
	Regional Load Factor (%)	79%		78%	67%	
Trading Price (\$/MWh)	Maximum	82.59	-12%	93.48	9992.30	
	Volume-Weighted Ave	22.45	-49%	44.04	56.35	
	Time-Weighted Ave	22.01	-49%	43.33	52.73	
	Minimum	-828.06	-15,783%	5.28	-999.76	
Temperature °C (Hobart)	Maximum	18.1	-31%	26.2	33.5	
	Minimum	5.5	-17%	6.6	0.5	

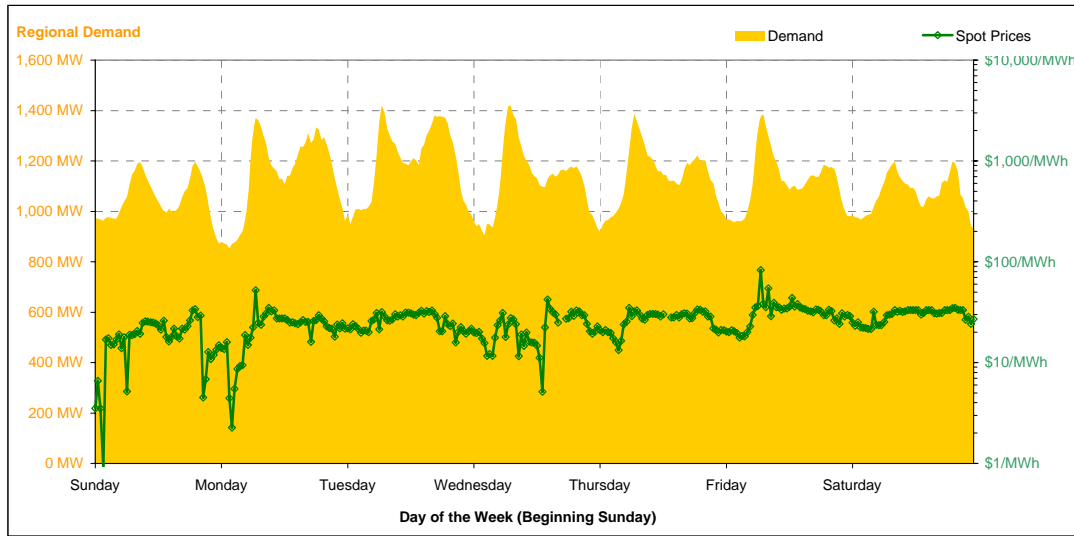


Note that prices below \$1/MWh have been reset to \$1/MWh for the purposes of this display

Current Week

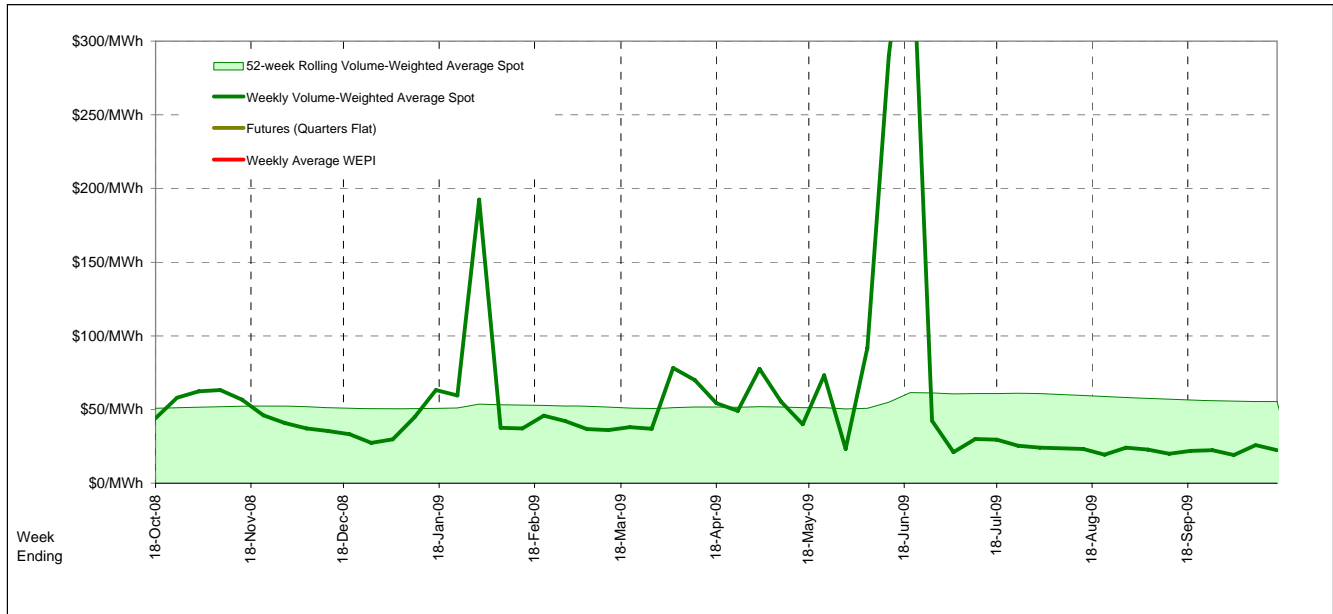
All Data in this table is shown in MWh							
Weekly Total	Sunday	Monday	Tuesday	Wednesday	Thursday	Friday	Saturday
<b>Total Production by Generation Company</b>							
Aurora Energy	33,487	4,502	4,703	4,781	4,861	4,813	4,922
Hydro Tasmania	122,920	20,497	20,668	18,254	17,914	16,134	17,890
Bell Bay Power	133	0	0	0	133	0	0
Other TAS Plants	0	0	0	0	0	0	0
<b>Total internal production</b>	<b>156,540</b>	<b>24,999</b>	<b>25,371</b>	<b>23,034</b>	<b>22,907</b>	<b>20,947</b>	<b>22,812</b>
(Load at Pumped Storage)	0	0	0	0	0	0	0
<b>Net internal production</b>	<b>156,540</b>	<b>24,999</b>	<b>25,371</b>	<b>23,034</b>	<b>22,907</b>	<b>20,947</b>	<b>22,812</b>
<b>Percentage each company's production represents of the total internal production</b>							
Aurora Energy	21.4%	18.0%	18.5%	20.8%	21.2%	23.0%	21.6%
Hydro Tasmania	78.5%	82.0%	81.5%	79.2%	78.2%	77.0%	78.4%
Bell Bay Power	0.1%	0.0%	0.0%	0.0%	0.6%	0.0%	0.0%
Other TAS Plants	0.0%	0.0%	0.0%	0.0%	0.0%	0.0%	0.0%
<b>Total Percentage</b>	<b>100.0%</b>	<b>100.0%</b>	<b>100.0%</b>	<b>100.0%</b>	<b>100.0%</b>	<b>100.0%</b>	<b>100.0%</b>

Current Week (continued)



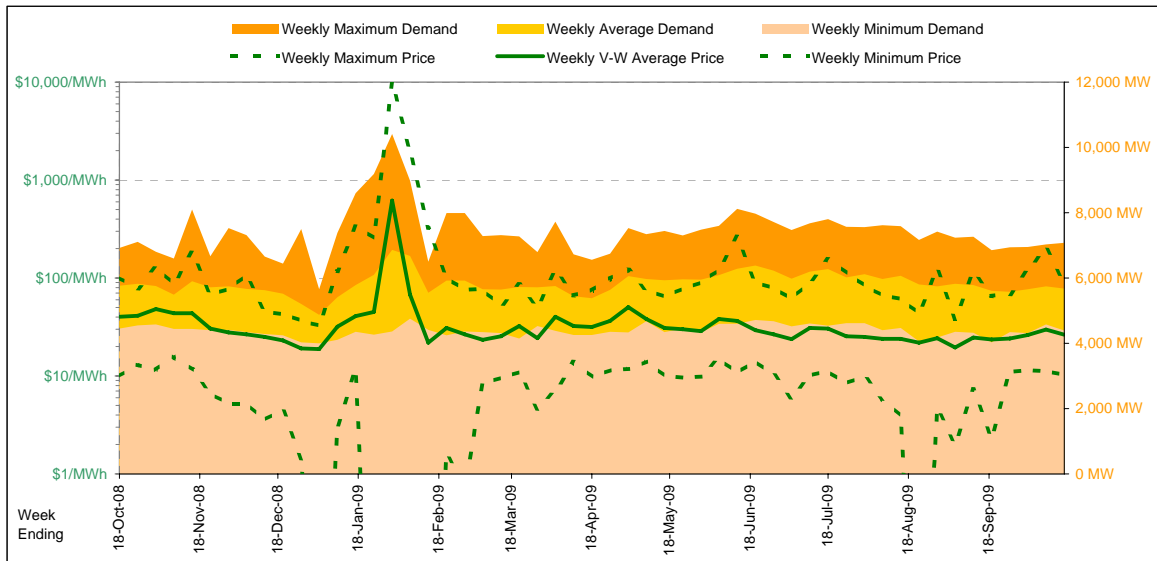
		Sunday	Monday	Tuesday	Wednesday	Thursday	Friday	Saturday
<b>For the Current Week</b>								
Total Energy (MWh)		25,200	27,441	28,657	26,949	27,302	26,801	25,591
Trading Demand Target (MW)	Maximum	1,196	1,370	1,421	1,420	1,388	1,386	1,198
	Average	1,050	1,143	1,194	1,123	1,138	1,117	1,066
	Minimum	873	853	948	905	919	957	929
Regional Load Factor (%)	Maximum	33.84	52.20	32.81	42.17	34.85	82.59	34.89
	Volume-Weighted Ave	18.47	23.39	26.09	21.49	5.70	32.51	29.65
Trading Price (\$/MWh)	Time-Weighted Ave	18.13	22.52	25.82	21.27	5.07	31.78	29.47
	Minimum	0.91	2.26	15.85	-0.83	-828.06	17.66	21.49
Temperature °C (Hobart)	Maximum	16.1	18.1	17.4	15.3	15.4	13.5	15.4
	Minimum	5.5	5.9	8.6	6.9	7.0	9.9	7.1
<b>Percentage Change from Same Week Last Year</b>								
Total Energy (MWh)		-3%	6%	1%	0%	-2%	-4%	1%
Trading Demand Target (MW)	Maximum	-0%	11%	-1%	10%	-3%	3%	1%
	Average	-3%	6%	1%	0%	-2%	-4%	1%
	Minimum	-3%	-3%	-3%	-4%	-8%	-3%	-1%
Trading Price (\$/MWh)	Maximum	-22%	-7%	-52%	-55%	-54%	-5%	-40%
	Volume-Weighted Ave	-7%	-29%	-39%	-57%	-90%	-43%	-39%
	Time-Weighted Ave	-8%	-29%	-39%	-57%	-91%	-44%	-40%
Temperature °C (Hobart)	Minimum	-84%	-57%	-36%	-102%	-2,446%	-50%	-39%
	Maximum	-27%	7%	-3%	-11%	-19%	-30%	-41%
Minimum	-41%	-49%	9%	-26%	6%	6%	-36%	
<b>For the Same Week Last Year</b>								
Total Energy (MWh)		25,852	25,779	28,302	26,892	27,834	27,893	25,299
Trading Demand Target (MW)	Maximum	1,198	1,229	1,436	1,291	1,438	1,345	1,186
	Average	1,077	1,074	1,179	1,121	1,160	1,162	1,054
	Minimum	897	883	979	947	995	986	934
Regional Load Factor (%)	Maximum	43.29	56.43	68.29	93.48	75.96	86.86	58.30
	Volume-Weighted Ave	19.93	32.76	42.51	50.03	54.69	57.49	48.95
Trading Price (\$/MWh)	Time-Weighted Ave	19.79	31.88	42.11	49.57	54.28	56.93	48.77
	Minimum	5.71	5.28	24.77	33.88	35.30	35.22	35.19
Temperature °C (Hobart)	Maximum	22.1	16.9	17.9	17.1	19.0	19.3	26.2
	Minimum	9.3	11.5	7.9	9.3	6.6	9.3	11.1

Long-Term Trends



Current Year

		Week 42 Ending Saturday			52-Weeks Ending Sat	
		17-Oct-09	% change	18-Oct-08	17-Oct-09	Date Occurred
Energy (MWh)	Total	953,479	-2%	968,928	50,961,961	
	Maximum	7,078	2%	6,925	10,415	29-Jan-09
	Average	5,675	-2%	5,767	5,834	
Trading Demand (MW)	Maximum	4,395	-1%	4,450	4,004	28-Dec-08
	Average	80%		83%	56%	
	Minimum					
Regional Load Factor (%)	Maximum	88.36	-12%	100.54	10000.00	
	Volume-Weighted Ave	26.39	-35%	40.35	44.33	
	Time-Weighted Ave	25.66	-34%	38.86	37.28	
	Minimum	10.26	4%	9.90	-496.71	
Trading Price (\$/MWh)	Maximum	22.6	-29%	31.7	46.4	
	Minimum	7.0	-29%	9.9	2.9	

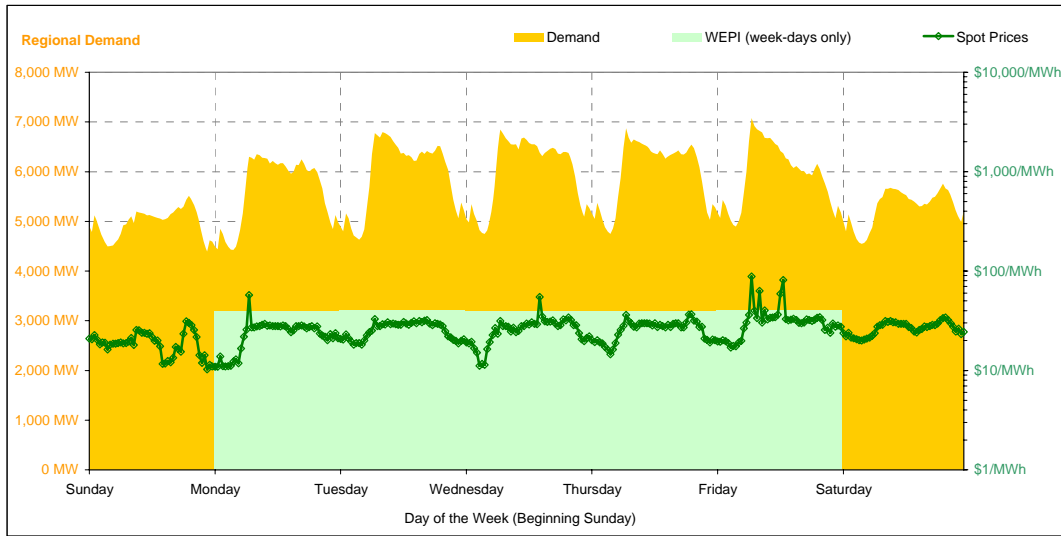


Note that prices below \$1/MWh have been reset to \$1/MWh for the purposes of this display

Current Week

All Data in this table is shown in MWh								
	Weekly Total	Sunday	Monday	Tuesday	Wednesday	Thursday	Friday	Saturday
<b>Total Production by Generation Company</b>								
AGL	10,596	550	1,358	2,184	2,573	1,780	1,356	796
Anglesea	25,297	3,788	3,258	3,109	3,832	3,686	3,785	3,840
Babcock & Brown Power	587	33	95	33	60	33	301	33
Ecogen Energy	6,620	0	543	2,460	2,768	0	850	0
Energy Brix	24,866	3,639	3,600	3,596	3,588	3,645	3,440	3,360
International Power (Hazelwood)	213,409	30,681	32,838	32,636	32,227	28,712	27,900	28,417
Loy Yang B	176,299	24,900	24,864	25,320	25,256	25,319	25,320	25,320
Loy Yang Power	312,690	40,945	40,864	42,747	50,958	50,767	46,413	39,997
Snowy Hydro	40,689	33	4,835	9,166	7,673	8,524	7,823	2,635
TRUenergy	222,149	34,883	33,853	26,383	26,027	33,041	34,131	33,832
Other VIC Plants	0	0	0	0	0	0	0	0
<b>Total internal production</b>	<b>1,033,200</b>	<b>139,452</b>	<b>146,105</b>	<b>147,632</b>	<b>154,959</b>	<b>155,506</b>	<b>151,318</b>	<b>138,229</b>
(Load at Pumped Storage)	0	0	0	0	0	0	0	0
<b>Net internal production</b>	<b>1,033,200</b>	<b>139,452</b>	<b>146,105</b>	<b>147,632</b>	<b>154,959</b>	<b>155,506</b>	<b>151,318</b>	<b>138,229</b>
<b>Percentage each company's production represents of the total internal production</b>								
AGL	1.0%	0.4%	0.9%	1.5%	1.7%	1.1%	0.9%	0.6%
Anglesea	2.4%	2.7%	2.2%	2.1%	2.5%	2.4%	2.5%	2.8%
Babcock & Brown Power	0.1%	0.0%	0.1%	0.0%	0.0%	0.0%	0.2%	0.0%
Ecogen Energy	0.6%	0.0%	0.4%	1.7%	1.8%	0.0%	0.6%	0.0%
Energy Brix	2.4%	2.6%	2.5%	2.4%	2.3%	2.3%	2.3%	2.4%
International Power (Hazelwood)	20.7%	22.0%	22.5%	22.1%	20.8%	18.5%	18.4%	20.6%
Loy Yang B	17.1%	17.9%	17.0%	17.2%	16.3%	16.3%	16.7%	18.3%
Loy Yang Power	30.3%	29.4%	28.0%	29.0%	32.9%	32.6%	30.7%	28.9%
Snowy Hydro	3.9%	0.0%	3.3%	6.2%	5.0%	5.5%	5.2%	1.9%
TRUenergy	21.5%	25.0%	23.2%	17.9%	16.8%	21.2%	22.6%	24.5%
Other VIC Plants	0.0%	0.0%	0.0%	0.0%	0.0%	0.0%	0.0%	0.0%
<b>Total Percentage</b>	<b>100.0%</b>	<b>100.0%</b>	<b>100.0%</b>	<b>100.0%</b>	<b>100.0%</b>	<b>100.0%</b>	<b>100.0%</b>	<b>100.0%</b>

Current Week (continued)



	Sunday	Monday	Tuesday	Wednesday	Thursday	Friday	Saturday
<b>For the Current Week</b>							
Total Energy (MWh)	119,430	135,015	142,504	143,872	143,598	142,382	126,680
Trading Demand Target (MW)	Maximum	5,511	6,348	6,795	6,847	6,873	7,078
	Average	4,976	5,626	5,938	5,995	5,983	5,933
	Minimum	4,395	4,428	4,634	4,745	4,745	4,893
Regional Load Factor (%)	90%	89%	87%	88%	87%	84%	92%
Wholesale Electricity Price Index (WEPI)	N/A	39.32	40.04	39.56	39.43	39.87	N/A
	Maximum	31.15	57.41	32.96	54.94	36.76	88.36
	Minimum	19.07	23.58	18.19	11.15	14.50	17.00
Trading Price (\$/MWh)	Volume-Weighted Ave	19.23	24.39	26.40	26.60	26.57	33.51
	Time-Weighted Ave	19.07	23.58	25.88	25.98	26.01	32.52
	Minimum	10.26	10.89	18.19	11.15	14.50	17.00
Temperature °C (Melbourne)	Maximum	22.2	22.6	19.2	16.4	16.3	18.0
	Minimum	7.0	11.8	9.7	9.6	10.8	7.6
<b>Percentage Change from Same Week Last Year</b>							
Total Energy (MWh)	-3%	-3%	-1%	-1%	-1%	-0%	-2%
Trading Demand Target (MW)	Maximum	-4%	-2%	-0%	-1%	2%	6%
	Average	-3%	-3%	-1%	-1%	-1%	-0%
	Minimum	-1%	-4%	-6%	-6%	-5%	-2%
Wholesale Electricity Price Index (WEPI)	N/A	-21%	-21%	-22%	-23%	-21%	N/A
Trading Price (\$/MWh)	Maximum	5%	-3%	-52%	-45%	-52%	-0%
	Volume-Weighted Ave	2%	-29%	-35%	-41%	-46%	-36%
	Time-Weighted Ave	3%	-29%	-35%	-41%	-46%	-36%
Temperature °C (Melbourne)	Maximum	4%	10%	-21%	-48%	-41%	19%
	Minimum	-27%	17%	10%	-18%	-21%	-21%
Minimum	-51%	-25%	-4%	-3%	-12%	-29%	-16%
	<b>For the Same Week Last Year</b>						
Total Energy (MWh)	123,583	139,849	143,650	145,649	144,365	142,840	128,993
Trading Demand Target (MW)	Maximum	5,756	6,454	6,814	6,925	6,768	6,704
	Average	5,149	5,827	5,985	6,069	6,015	5,952
	Minimum	4,450	4,628	4,930	5,048	4,999	5,003
Regional Load Factor (%)	89%	90%	88%	88%	89%	89%	93%
Wholesale Electricity Price Index (WEPI)	N/A	49.49	50.86	50.78	51.03	50.78	N/A
	Maximum	29.77	59.38	68.91	100.54	75.82	88.75
	Minimum	18.78	34.28	40.42	45.41	49.51	52.58
Trading Price (\$/MWh)	Volume-Weighted Ave	18.47	33.18	39.68	44.31	48.42	50.81
	Time-Weighted Ave	9.90	9.94	23.17	21.57	24.61	14.33
	Minimum	30.6	19.3	17.5	20.1	20.6	22.7
Temperature °C (Melbourne)	Maximum	30.6	19.3	17.5	20.1	20.6	22.7
	Minimum	14.2	15.7	10.1	9.9	12.3	10.7

Long-Term Trends

This table contains electricity futures pricing, supplied by d-cyphatrade. All data other than flat and peak quarterly pricing is implied.

		CalYear	FinYear Ending	Q1	Q2	Q3	Q4
<b>Actual Prices for Flat Load (All Times)</b>	2009						28.95
	2010	39.53		51.85	35.50	35.50	35.50
	2011	43.75	40.95	57.75	35.35	41.05	41.05
	2012	54.01	50.13	70.70	47.90	49.75	
<b>Actual Prices for Peak Load (7am-10pm M-F)</b>	2009						39.50
	2010	59.16		89.70	48.25	48.00	52.00
	2011	69.25	62.91	102.00	51.20	58.20	66.55
	2012	80.08	80.05	145.20	51.20	58.20	
<b>Implied Prices for Off-Peak Load (All other times)</b>	2009						20.44
	2010	23.70		21.33	25.22	25.42	22.19
	2011	23.19	23.24	22.06	22.57	27.22	20.49
	2012	32.99	26.00	10.62	45.24	42.94	

