

### About the Commission

The Workers Compensation Commission is an independent statutory tribunal within the justice system of New South Wales, which began operating on 1 January 2002.

The Commission aims to provide a just, timely and cost effective forum for the resolution of workers compensation disputes.

### Statistics at a glance

- § We registered 3,039 dispute applications
- § We resolved 3,514 disputes
- § 1,069 Medical Assessment Certificates were issued by Approved Medical Specialists
- § We registered 81 appeals against decisions of Arbitrators
- § We registered 247 appeals against decisions of Approved Medical Specialists
- § 251 Arbitral appeals are in progress
- § 461 Medical appeals are in progress
- § 2% of Arbitrator determinations were overturned on appeal
- § 5% of Medical Assessment Certificates were revoked on appeal
- § We registered 181 Interim Payment Directions
- § We finalised 147 Interim Payment Applications
- § We registered 18 Workplace Injury Management disputes
- § We resolved 22 Workplace Injury Management disputes
- § We registered 185 applications for costs assessment
- § We registered 97 applications for mediation
- § We registered 1,593 section 66A agreements for permanent impairment/pain and suffering compensation.

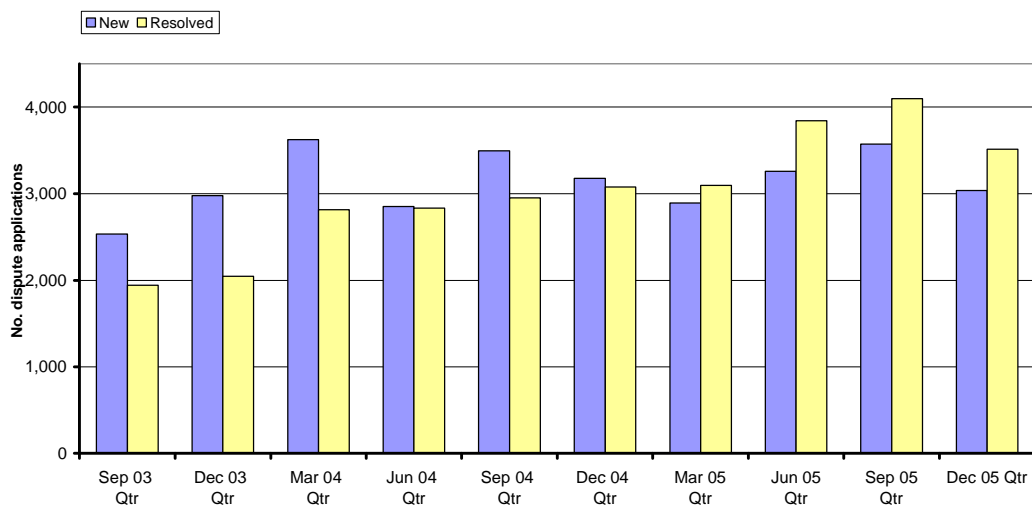
### Dispute applications

We received 3,039 applications to resolve disputes in the quarter, a 15% decrease over the 3,574 disputes received in the September quarter.

We resolved 3,514 disputes in the December quarter, a 14% decrease over the 4,097 disputes resolved in the September quarter.

The graph below shows the number of dispute applications received and resolved over the last two and a quarter years.

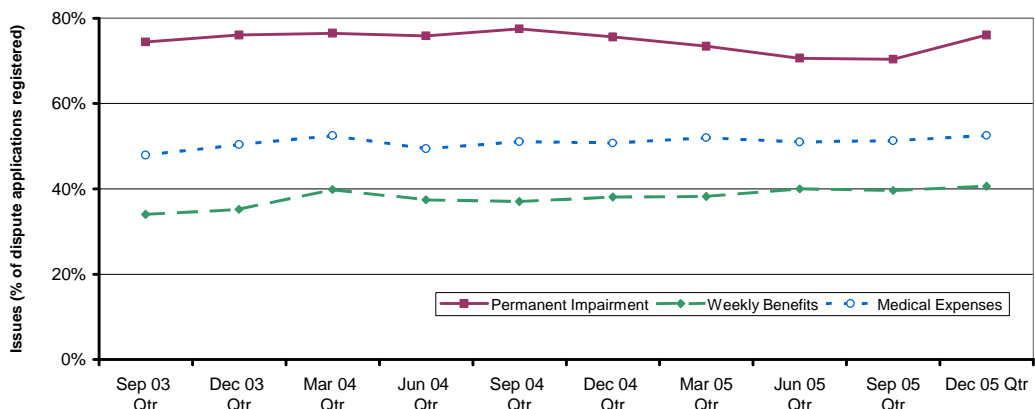
**New & resolved disputes**



### Issues in dispute

When lodging an Application for Resolution of a Dispute the applicant generally identifies more than one issue in dispute. They type and percentages of issues in each category of dispute has remained relatively stable since June 2003. The percentage of dispute applications that identify a dispute about statutory compensation for permanent impairment is around 76%. Approximately 53% of applications identify medical expenses in dispute and approximately 41% of applications involve weekly benefits. The graph below show the top three issues identified by the applicant as being in dispute.\*

**Issues in dispute**



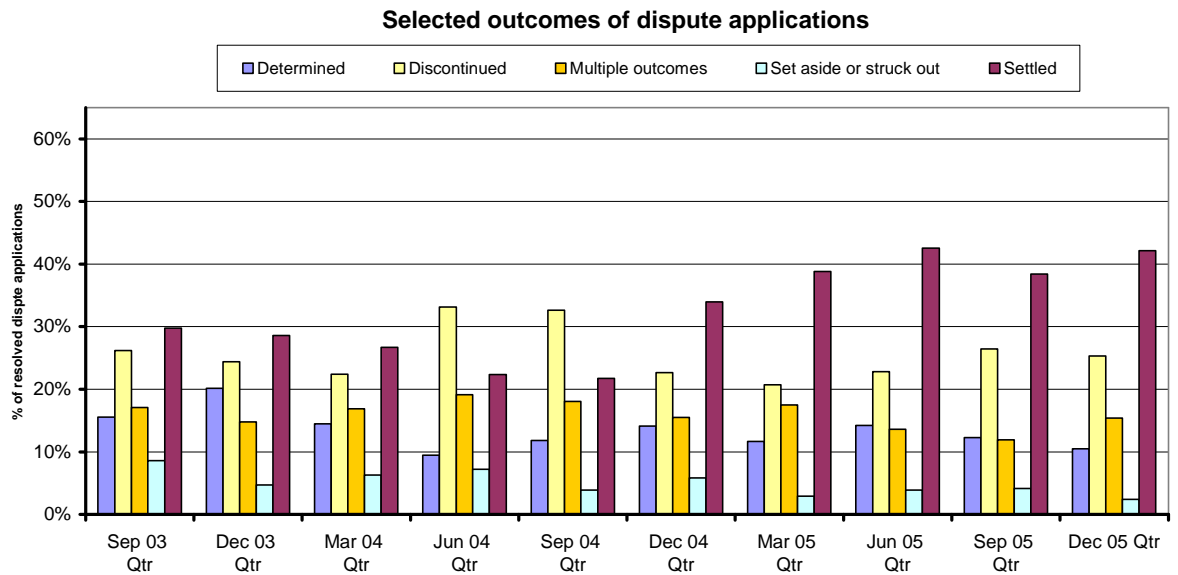
\*Note % is greater than 100% due to most applications identifying multiple issues in dispute.

### Outcomes of dispute applications

In the December 2005 quarter;

- 42% of disputes settled by agreement between the parties
- 11% were determined by an Arbitrator
- 25% were discontinued

The graph below shows the outcomes of disputes, by quarter, over the last two years.



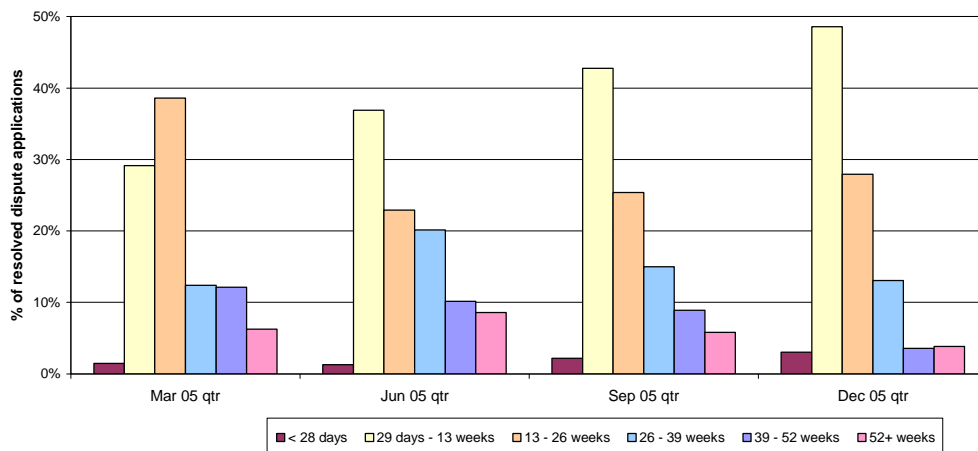
### Time taken to resolve disputes

The average time taken to resolve disputes without appeals was 129 days from the date of registration. Lodgment of appeals has a significant impact on the time it takes to resolve disputes.

For matters without appeals, we resolved:

- 52% within 13 weeks
- 80% within 26 weeks
- 93% within 39 weeks.

**Time taken to resolve dispute applications  
(excluding matters with appeals)**



### Expedited assessment

In this quarter we received 181 applications for Interim Payment Directions (IPD's) and we finalised 147 IPD's. We issued 95 IPD's and refused 42. Of the remainder, a number were referred to an Arbitrator for resolution.

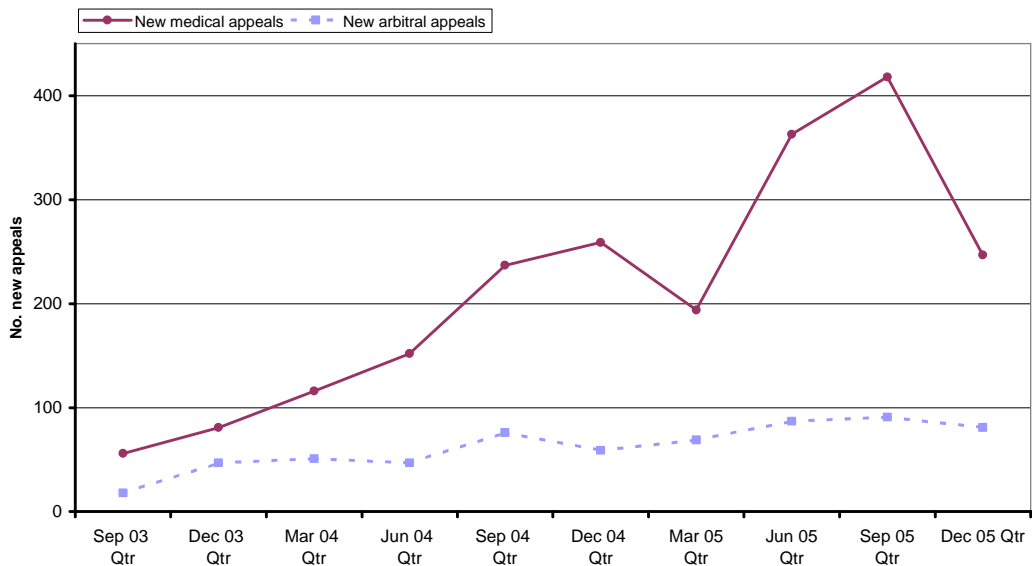
A total of 18 Workplace Injury Management (WIM) disputes were registered in the quarter and 22 WIM disputes were resolved over this period.

### Appeals

In this quarter we received 81 new appeals against a decision of an arbitrator (an appeal rate of 11%). Only 2% of appeal decisions revoked the Arbitrator's decision or remitted the matter back to an Arbitrator.

A total of 247 appeals against medical assessments were received this quarter (an appeal rate of 23%). Only 5% of Medical Assessment Certificates were revoked by the Appeal Panel.

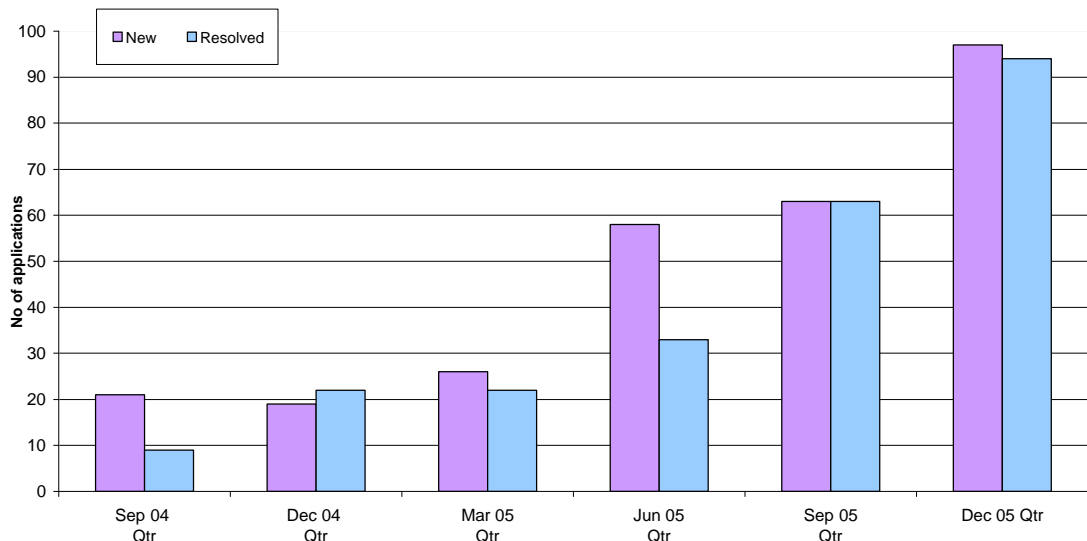
**New appeals against decisions of arbitrators and AMS**



### Mediation

In this quarter we had 97 new applications, up from 63 in the September quarter. The number of applications for mediation finalised rose from 63 in September quarter to 94 in the December quarter.

**Applications for mediation  
(common law work injury damages)**



# QUARTERLY REVIEW

October - December 2005

## Costs

In the December quarter, we received 185 applications for assessment of costs, a slight increase over the 172 costs applications received in the September quarter.

## Next quarterly review

We will publish our next quarterly review – covering the three-month period from January-March 2006– in April 2006.

## Further information

If you have any queries or would like further information, please email us at [registry@wcc.nsw.gov.au](mailto:registry@wcc.nsw.gov.au)