

About the Commission

The Workers Compensation Commission is an independent statutory tribunal within the justice system of New South Wales, which began operating on 1 January 2002.

The Commission aims to provide a just, timely and cost effective forum for the resolution of workers compensation disputes.

Statistics at a glance

- We registered 2,911 dispute applications
- We finalised 3,549 disputes
- 997 Medical Assessment Certificates were issued by Approved Medical Specialists
- We registered 63 appeals against decisions of Arbitrators and finalised 56
- We registered 227 appeals against decisions of Approved Medical Specialists and finalised 279
- 276 Arbitral Appeals are in progress
- 354 Medical Appeals are in progress
- 2% of Arbitrator determinations were overturned on appeal
- 9% of Medical Assessment Certificates were revised on appeal
- We registered 211 Interim Payment Directions
- We finalised 161 Interim Payment Applications
- We registered 25 Workplace Injury Management disputes
- We finalised 17 Workplace Injury Management disputes
- We registered 158 applications for costs assessment
- We registered 112 applications for mediation
- We finalised 82 applications for mediation
- We registered 1,789 section 66A agreements for permanent impairment/pain and suffering compensation.

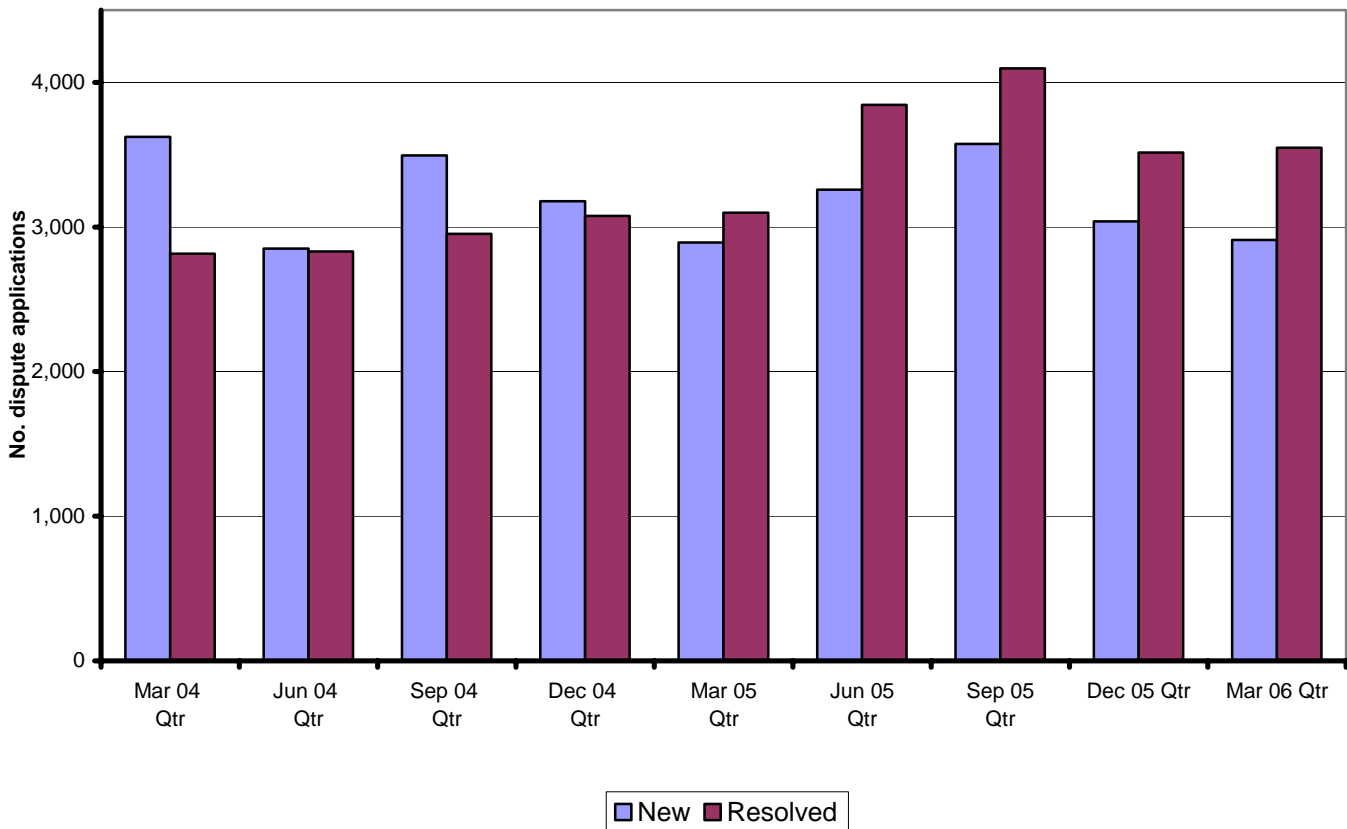
Dispute applications

We received 2,911 applications to resolve disputes in the quarter, a 4% decrease over the 3,039 disputes received in the December 2005 quarter.

We finalised 3,549 disputes in the March 2006 quarter, a 1% increase over the 3,514 disputes finalised in the December 2005 quarter.

The graph below shows the number of dispute applications received and finalised over the last 2 years.

Graph 1 - new & resolved Form 2 applications
by quarter

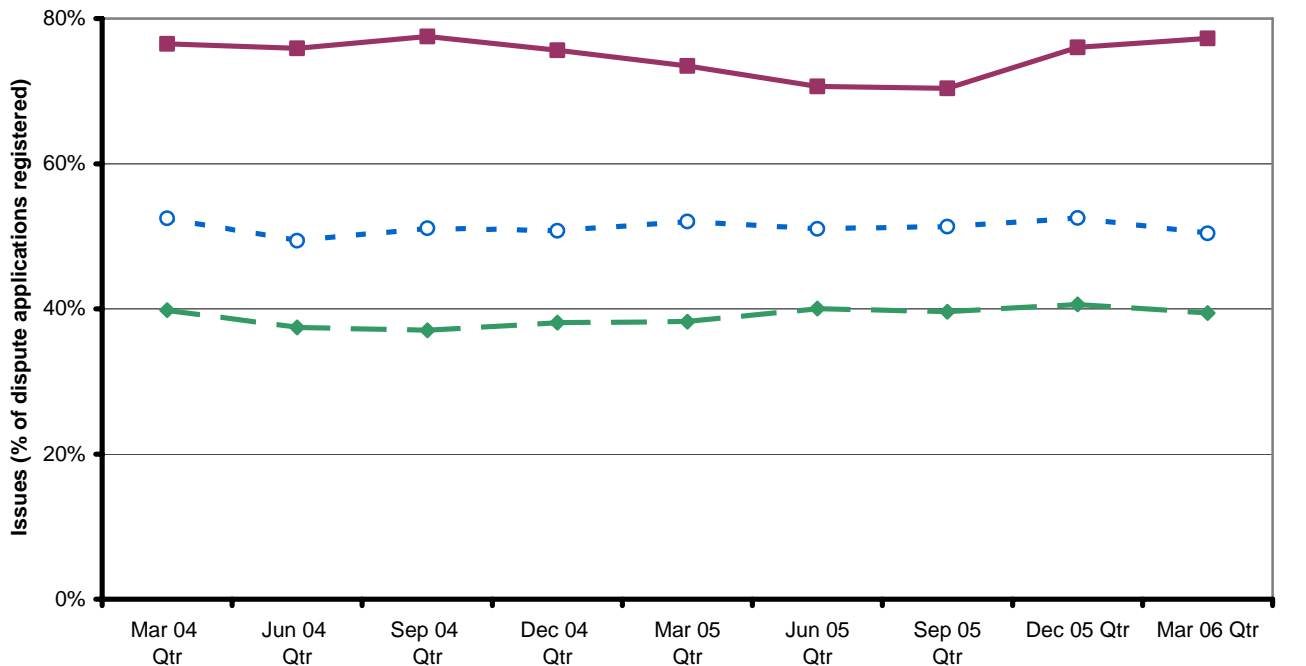


Issues in dispute

When lodging an Application for Resolution of a Dispute the applicant generally identifies more than one issue in dispute. The type and percentages of issues in each category of dispute has remained relatively stable since June 2003. The percentage of dispute applications that identify a dispute about statutory compensation for permanent impairment is 77%. 50% of applications identified medical expenses in dispute and 39% of applications involved weekly benefits.

The graph below** shows the top three issues identified by the applicant as being in dispute

Graph 2 - Top 3 issues in dispute - Form 2 applications by quarter



■ Permanent Impairment
 ◆ Weekly Benefits
 -○- Medical Expenses

** Note % is greater than 100% due to most applications identifying multiple issues in dispute

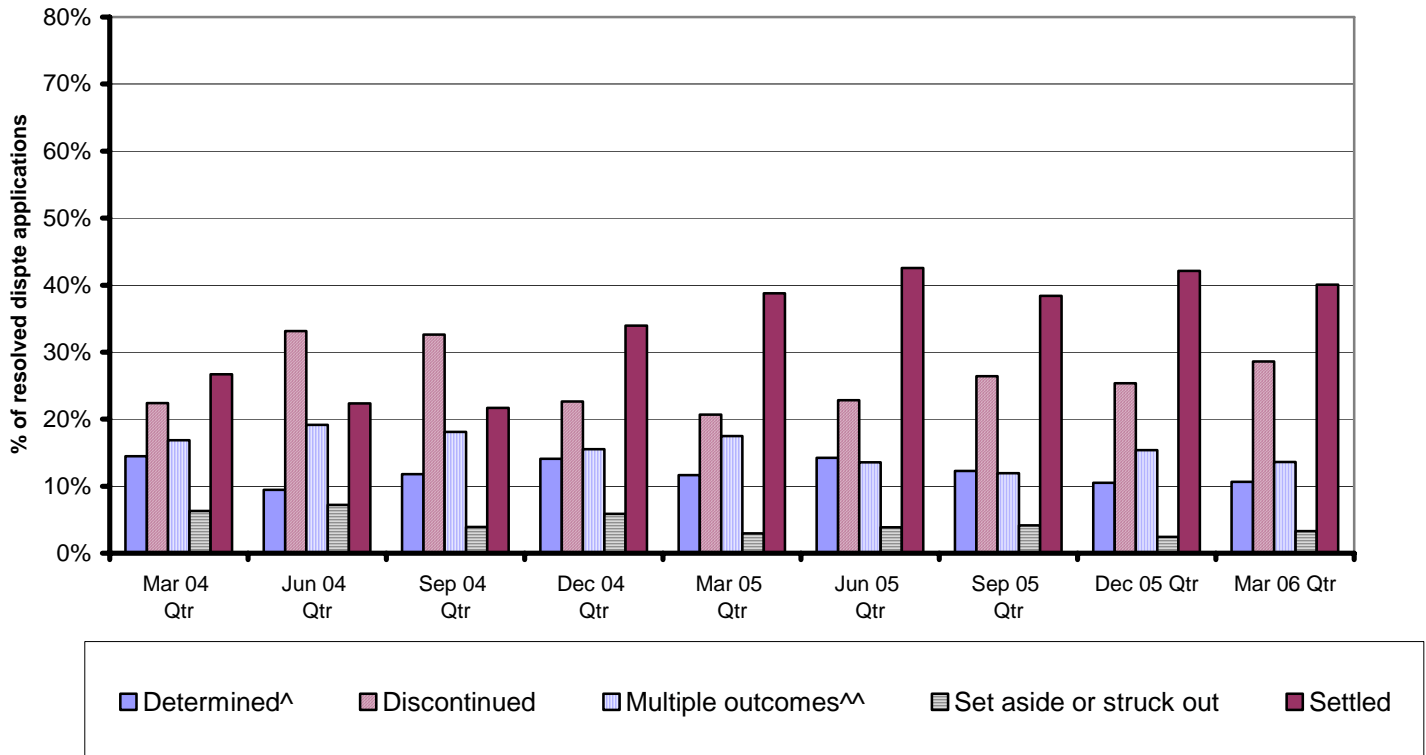
Outcomes of dispute applications

In the March 2006 quarter;

- 40% of disputes settled by agreement between the parties
- 11% were determined by an arbitrator
- 29% were discontinued by the applicant or parties to the dispute.

The graph below shows the outcomes of disputes, by quarter, over the last 2 years.

**Graph 3 - selected outcomes of Form 2 applications
by quarter**



Time taken to resolve disputes

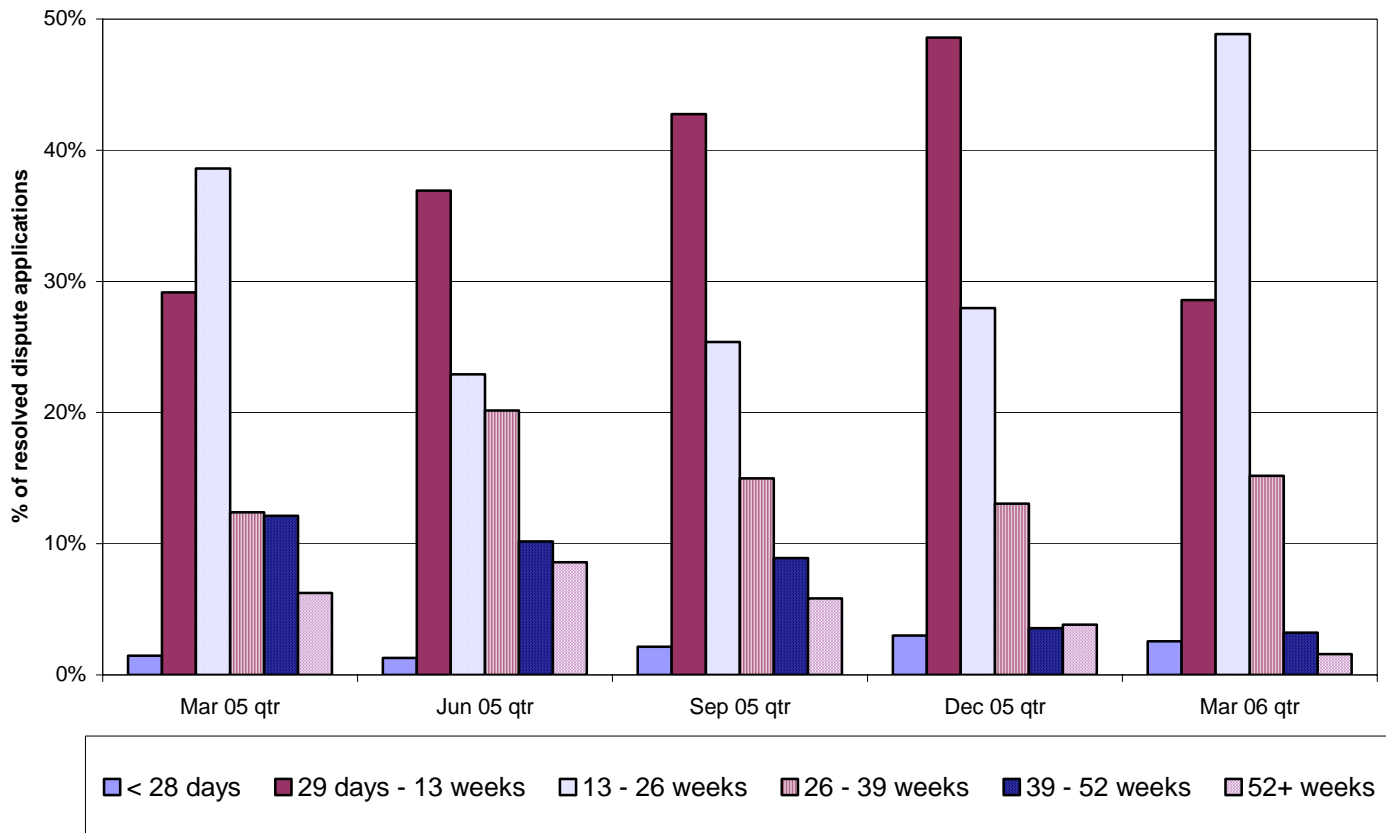
The average time taken to resolve disputes without appeals was 133 days from the date of registration. Lodgment of appeals has a significant impact on the time it takes to resolve disputes.

For matters without appeals, we finalised:

- 31% within 13 weeks
- 80% within 26 weeks
- 95% within 39 weeks.

Graph 4a below shows the time taken to resolve disputes without appeals

**4 - time taken to resolve dispute applications
(excluding matters with appeals)**



Expedited Assessment

In this quarter we received 211 applications for Interim Payment Directions (IPDs) and we finalised 161 IPDs. We issued 103 IPDs and refused 30. Of the remainder, a number were referred to an arbitrator for resolution.

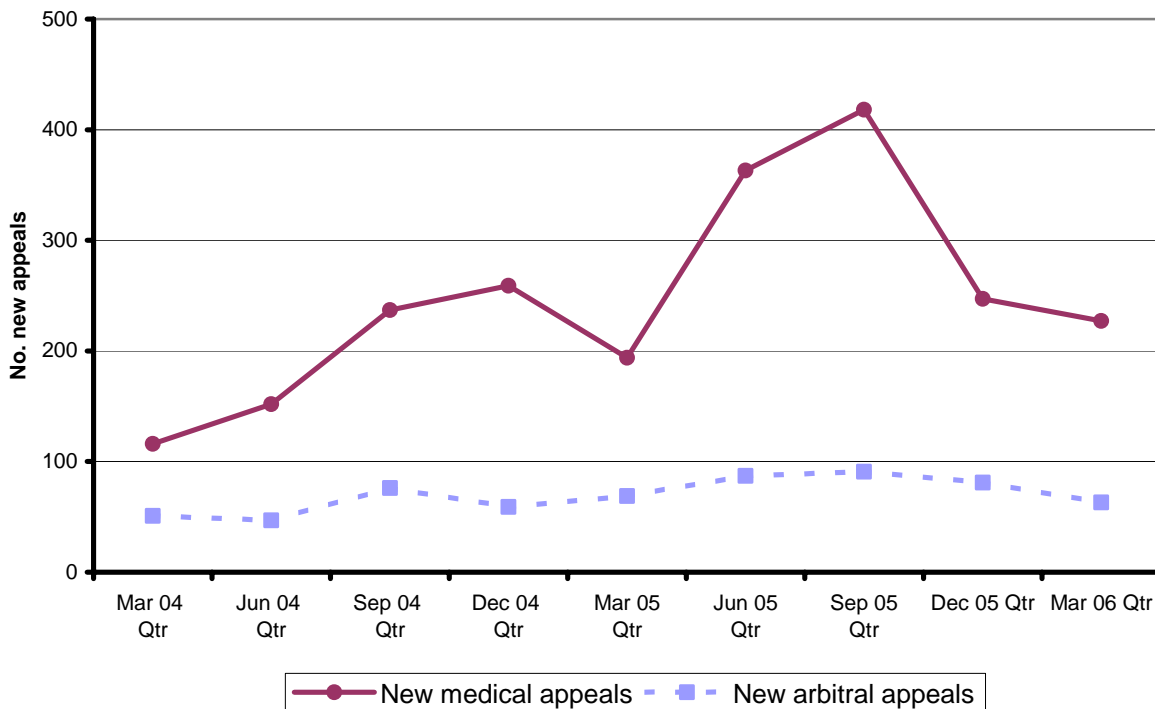
A total of 25 Workplace Injury Management (WIM) disputes were registered in the quarter and 17 WIM disputes were finalised over this period.

Appeals

In this quarter we received 63 new appeals against a decision of an arbitrator (an appeal rate of 10%). 56 arbitral appeals were finalised. Only 2% (13) of total determinations by arbitrators (648) were revoked or the matter remitted back to an arbitrator.

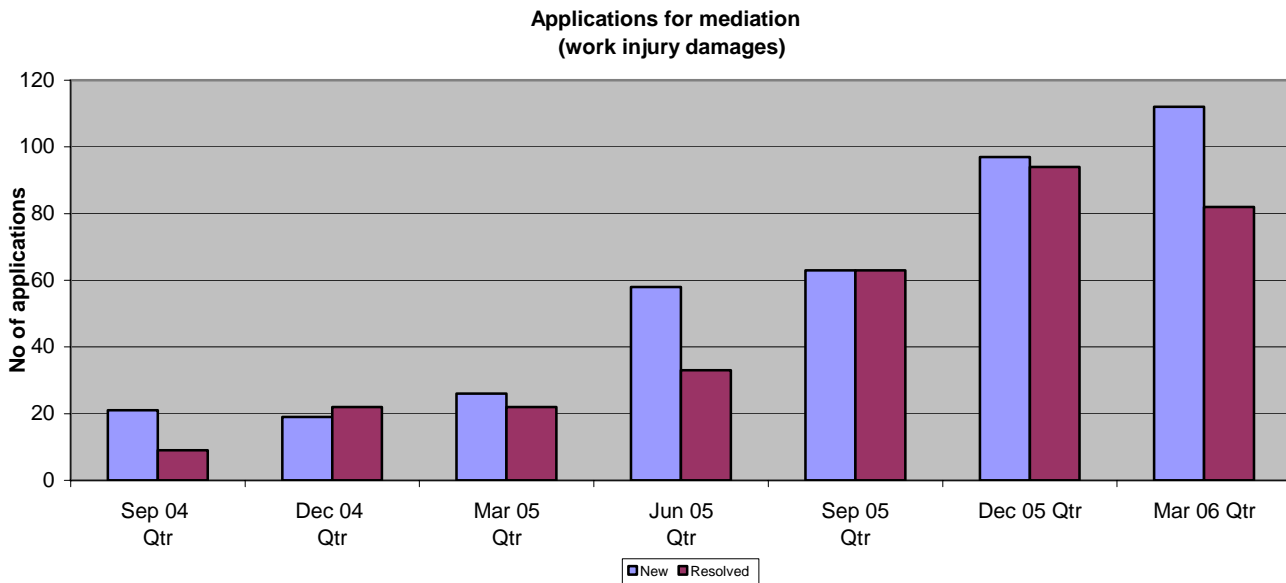
A total of 227 appeals against medical assessments were received this quarter (an appeal rate of 23%) and 279 were finalised. 9% (93) of total Medical Assessment Certificates (997) were revoked by the Appeal Panel.

Graph 5 - new appeals against decisions of arbitrators and AMS by quarter



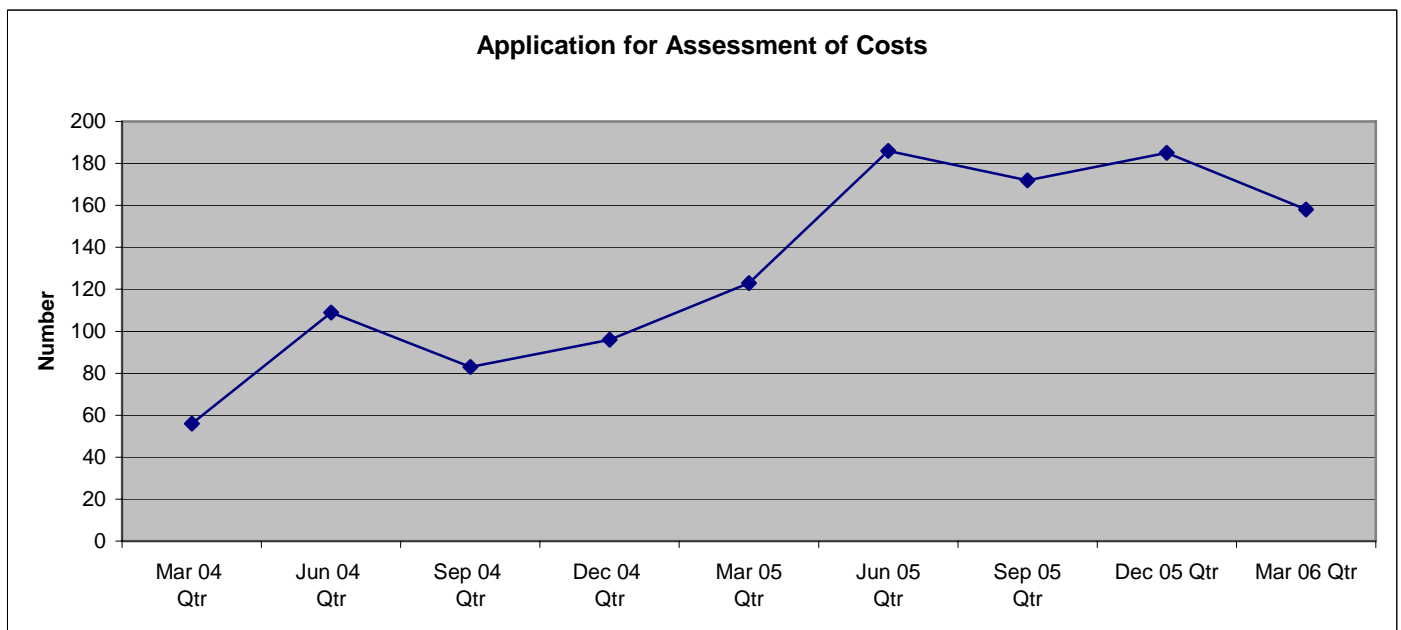
Mediation

In this quarter we received 112 new applications. 82 applications for mediation were finalised in the March 2006 quarter.



Costs

In the March 2006 quarter, we received 158 applications for assessment of costs.



QUARTERLY REVIEW

January - March 2006

Next quarterly review

We will publish our next quarterly review – covering the three-month period from April 2006 – June 2006 – in July 2006.

Further information

If you have any queries or would like further information, please email us at registry@wcc.nsw.gov.au