

About the Commission

The Workers Compensation Commission is an independent statutory tribunal within the justice system of New South Wales, which began operating on 1 January 2002.

The Commission aims to provide a just, timely and cost effective forum for the resolution of workers compensation disputes.

Statistics at a glance

- We registered 3,574 dispute applications
- We resolved 4,097 disputes
- 1,582 Medical Assessment Certificates were issued by Approved Medical Specialists
- We registered 91 appeals against decisions of Arbitrators
- We registered 418 appeals against decisions of Approved Medical Specialists
- 226 Arbitral appeals are in progress
- 554 Medical appeals are in progress
- 1% of Arbitrator determinations were overturned on appeal
- 4% of Medical Assessment Certificates were revoked on appeal
- We registered 130 Interim Payment Directions
- We finalised 145 Interim Payment applications
- We registered 18 Workplace Injury Management disputes
- We resolved 28 Workplace Injury Management disputes
- We registered 172 applications for costs assessment
- We registered 63 applications for mediation
- We registered 2,191 section 66A agreements for permanent impairment/pain and suffering compensation.

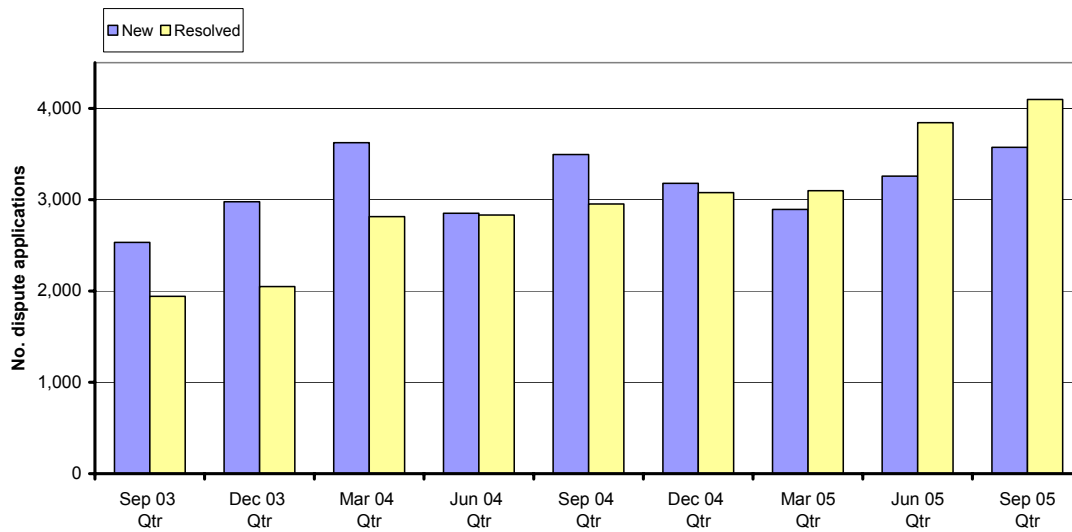
Dispute applications

We received 3,574 applications to resolve disputes in the quarter, a 10% increase over the 3,258 disputes received in the June quarter.

We resolved 4,097 disputes in the September quarter, a 7% increase over the 3,844 disputes resolved in the June quarter.

The graph below shows the number of dispute applications received and resolved over the last 2 years.

New & resolved disputes

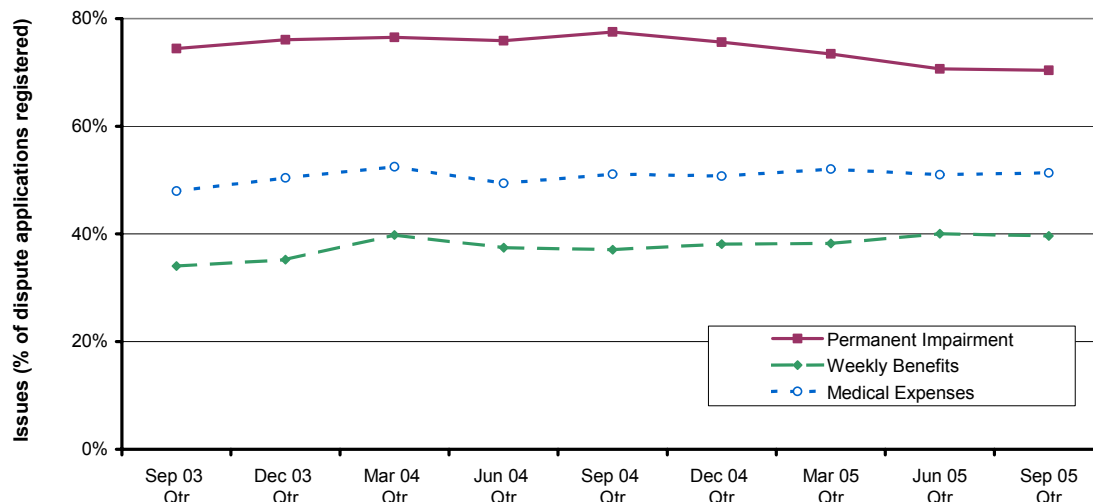


Issues in dispute

When lodging an Application for Resolution of a Dispute the applicant generally identifies more than one issue in dispute. The type and percentage of issues in each category of dispute has been stable over the last 2 years. The percentage of dispute applications that identify a dispute about statutory compensation for permanent impairment is around 70%. Approximately 50% of applications identify medical expenses in dispute and approximately 40% of applications involve weekly benefit disputes.

The graph below shows the top three issues identified by the applicant as being in dispute.

Issues in dispute



Time taken to resolve disputes

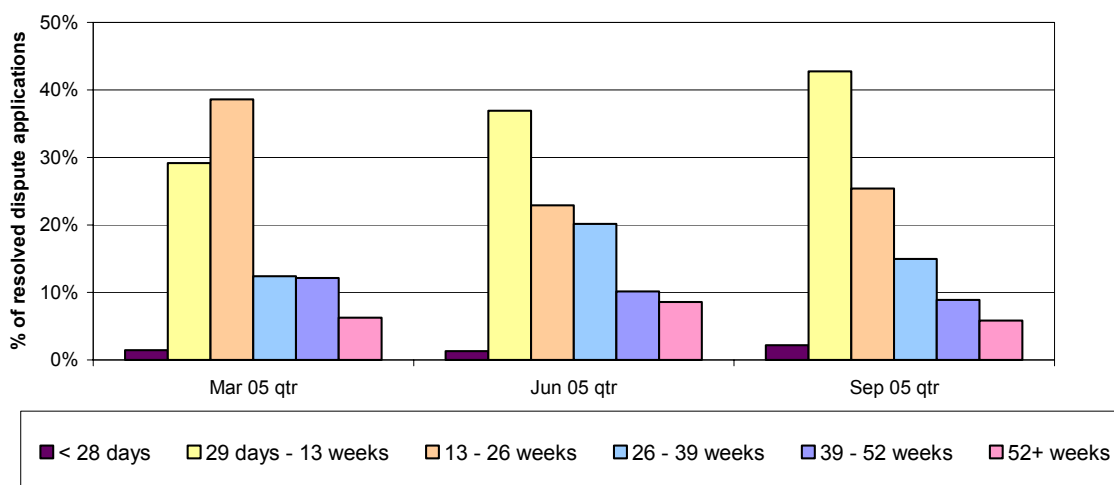
The average time taken to resolve disputes without appeals was 152 days from the date of registration.

Lodgment of appeals has a significant impact on the time it takes to resolve disputes.

For matters without appeals, we resolved:

- 45% within 13 weeks
- 70% within 26 weeks
- 85% within 39 weeks.

Time taken to resolve dispute applications
(excluding matters with appeals)



Expedited Assessments

In this quarter we received 130 applications for Interim Payment Directions (IPD's) and we finalised 145 Interim Payment Directions. We issued 77 IPD's and refused 58. Of the remainder, a number were referred to an Arbitrator for resolution and 1 was withdrawn.

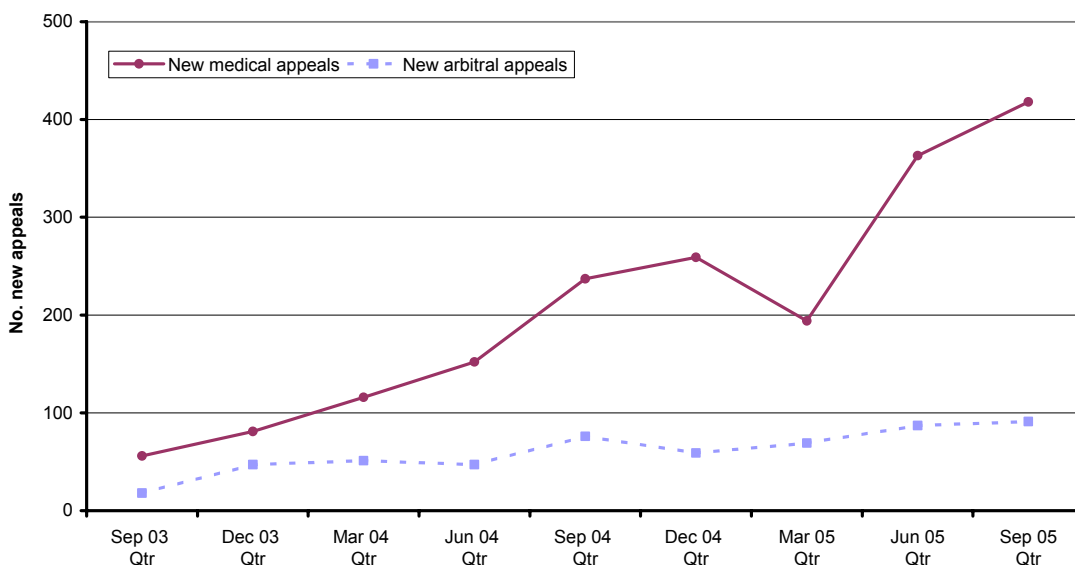
A total of 18 Workplace Injury Management (WIM) disputes were registered in the quarter and 28 WIM disputes were resolved over this period.

Appeals

In this quarter we received 91 new appeals against a decision of an arbitrator (an appeal rate of 10%). Only 1% of appeal decisions revoked the Arbitrator's decision or remitted the matter back to an Arbitrator.

A total of 418 appeals against medical assessments were received in this quarter (an appeal rate of 26%). Only 4% of Medical Assessment Certificates were revoked by the Appeal Panel.

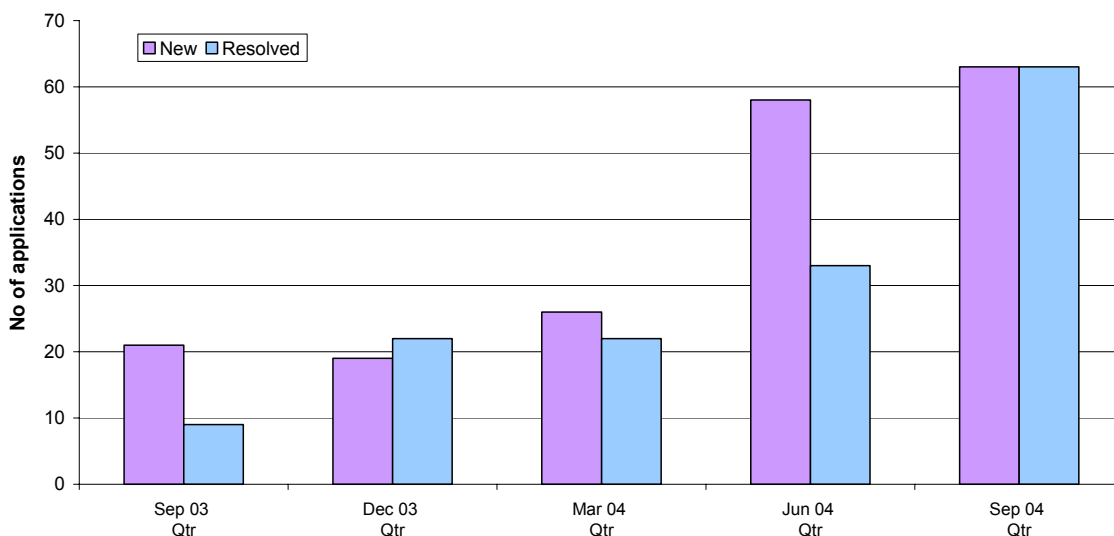
New appeals against decisions of arbitrators and AMS



Mediation

In this quarter we had 63 new applications for mediation, up from 58 in the June quarter. The number of mediations finalised in this quarter rose from 33 in the June quarter to 63 this quarter.

**Applications for mediation
(common law work injury damages)**



QUARTERLY REVIEW

July – September 2005

Costs

In the September quarter, we received 172 applications for assessment of costs, a slight decrease over the 186 costs applications received in the June quarter.

Next quarterly review

We will publish our next quarterly review – covering the three-month period from October–December 2005 – in February 2006.

Further information

If you have any queries or would like further information, please email us at registry@wcc.nsw.gov.au.