

### About the Commission

The Workers Compensation Commission is an independent statutory tribunal within the justice system of New South Wales, which began operating on 1 January 2002.

The Commission aims to provide a just, timely and cost effective forum for the resolution of workers compensation disputes.

### Statistics at a glance

- § We registered 2,947 dispute applications
- § We finalised 3,206 disputes
- § 797 Medical Assessment Certificates were issued by Approved Medical Specialists
- § We registered 85 appeals against decisions of Arbitrators and finalised 144
- § We registered 174 appeals against decisions of Approved Medical Specialists and finalised 234
- § 215 Arbitral Appeals are in progress
- § 259 Medical Appeals are in progress
- § 12% of Arbitrator determinations were overturned on appeal
- § 14% of Medical Assessment Certificates were revised on appeal
- § We registered 183 Interim Payment Directions
- § We finalised 260 Interim Payment Applications
- § We registered 29 Workplace Injury Management disputes
- § We finalised 44 Workplace Injury Management disputes
- § We registered 147 applications for costs assessment
- § We registered 104 applications for mediation
- § We finalised 114 applications for mediation
- § We registered 2,059 section 66A agreements for permanent impairment/pain and suffering compensation.

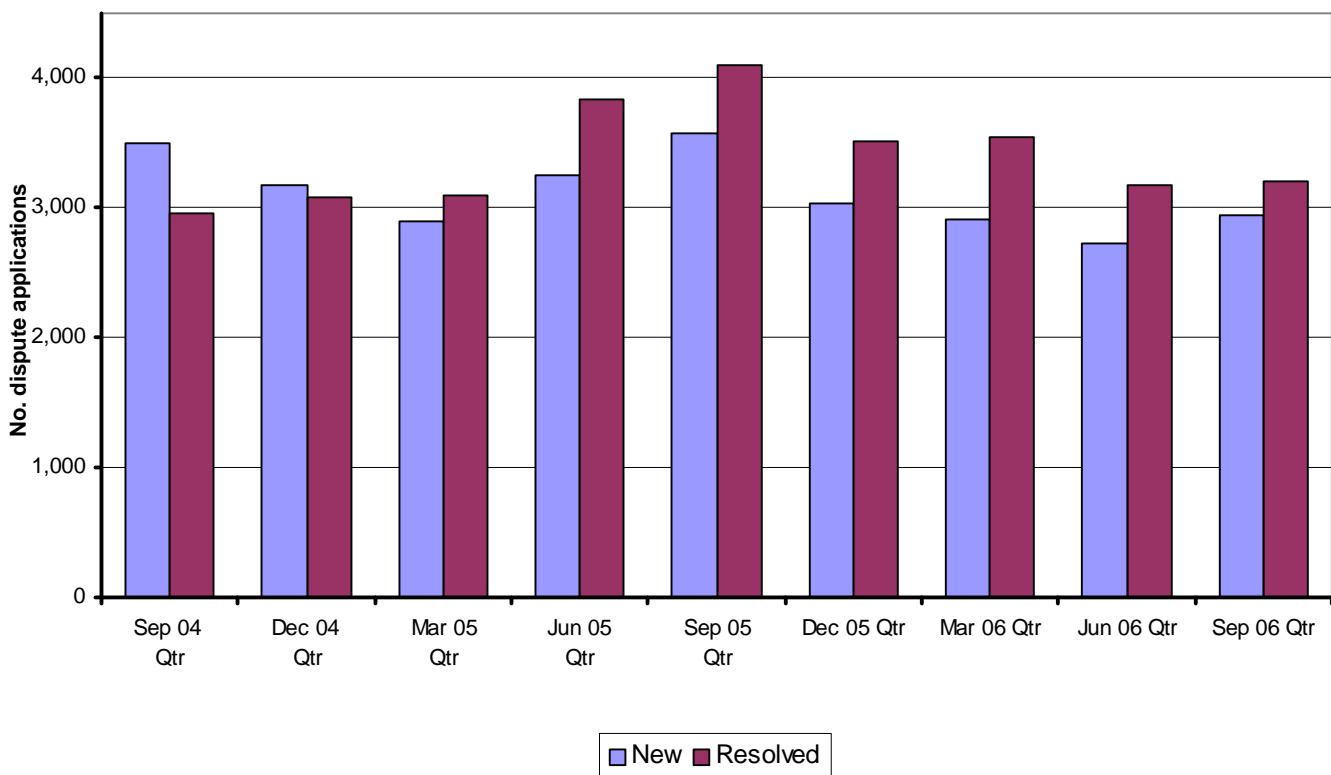
### Dispute applications

We received 2,947 applications to resolve disputes in the quarter, an 8.1% increase over the 2,725 disputes received in the June 2006 quarter.

We finalised 3,206 disputes in the September 2006 quarter, a 1.04% increase over the 3,173 disputes finalised in the June 2006 quarter.

The graph below shows the number of dispute applications received and finalised over the last 2 years.

**Graph 1 - new & resolved Form 2 applications  
by quarter**



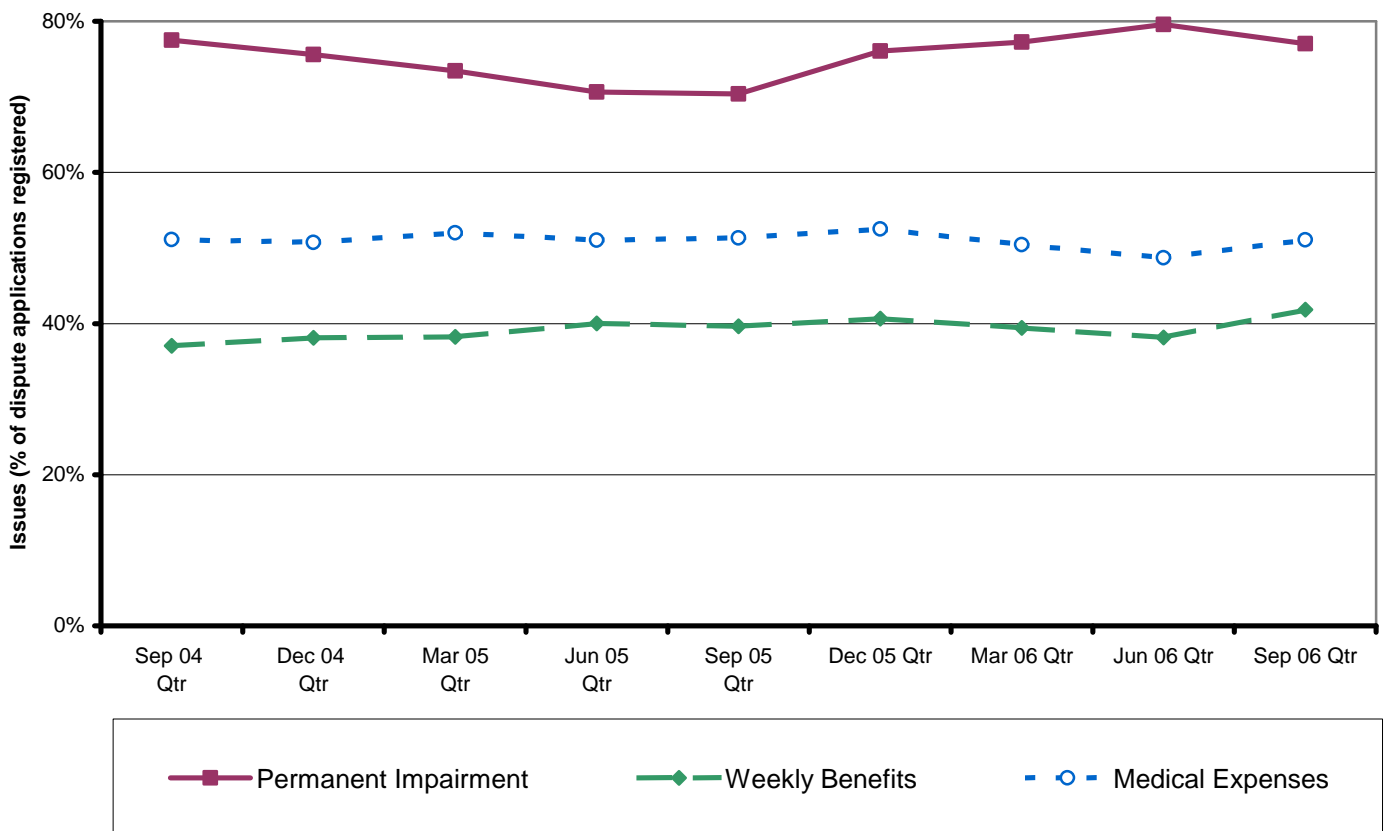
### Issues in dispute

When lodging an Application for Resolution of a Dispute the applicant generally identifies more than one issue in dispute. The type and percentages of issues in each category of dispute has remained relatively stable since June 2003. The percentage of dispute applications that identify a dispute about statutory compensation for permanent impairment is 77%. 51% of applications identified medical expenses in dispute and 42% of applications involved weekly benefits.

The graph below\*\* shows the top three issues identified by the applicant as being in dispute

\*\* Note % is greater than 100% due to most applications identifying multiple issues in dispute

**Graph 2 - Top 3 issues in dispute - Form 2 applications by quarter**



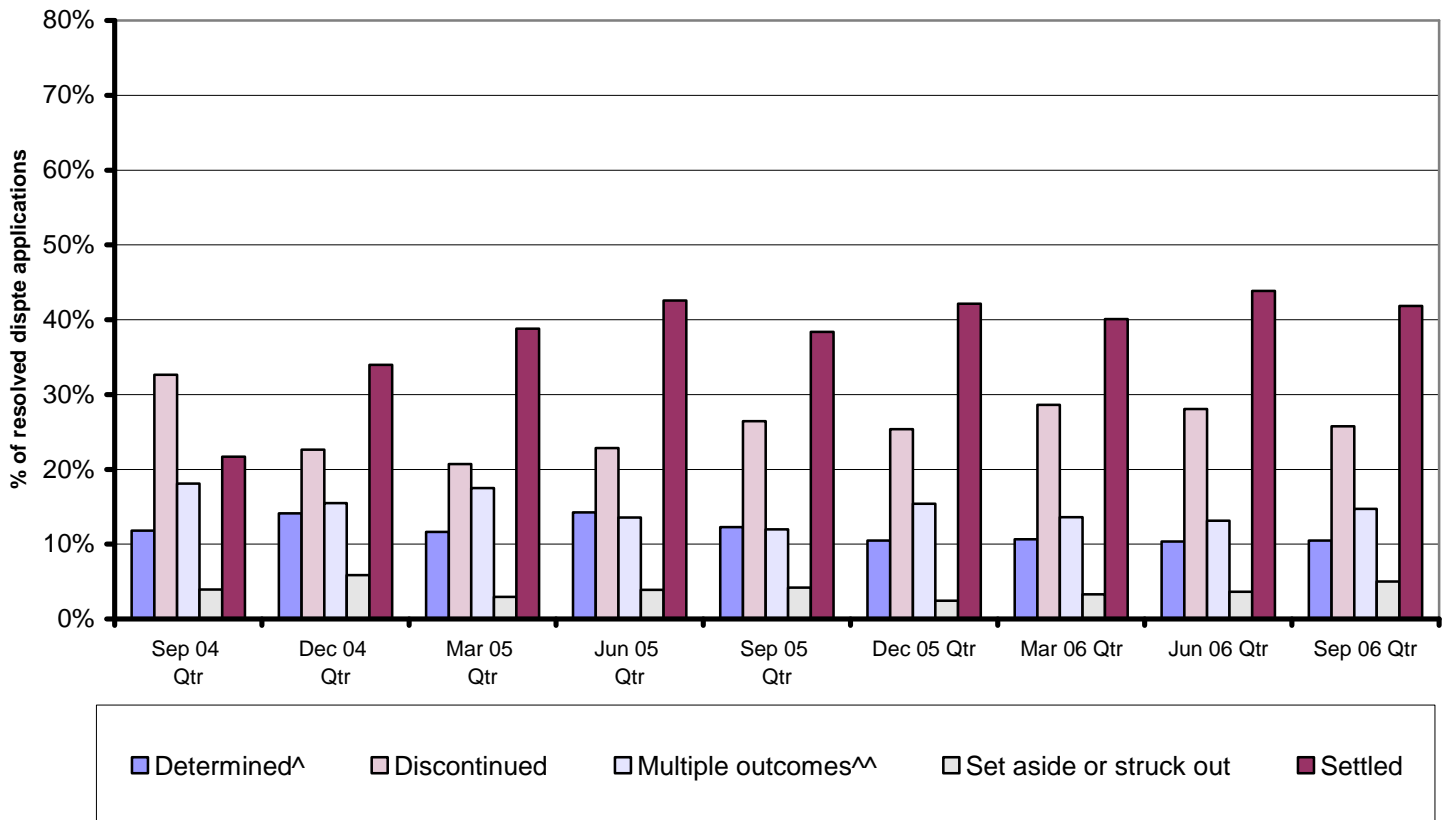
### Outcomes of dispute applications

In the September 2006 quarter;

- 42% of disputes settled by agreement between the parties
- 10% were determined by an arbitrator
- 26% were discontinued by the applicant or parties to the dispute.

The graph below shows the outcomes of disputes, by quarter, over the last 2 years.

**Graph 3 - selected outcomes of Form 2 applications  
by quarter**



### Time taken to resolve disputes

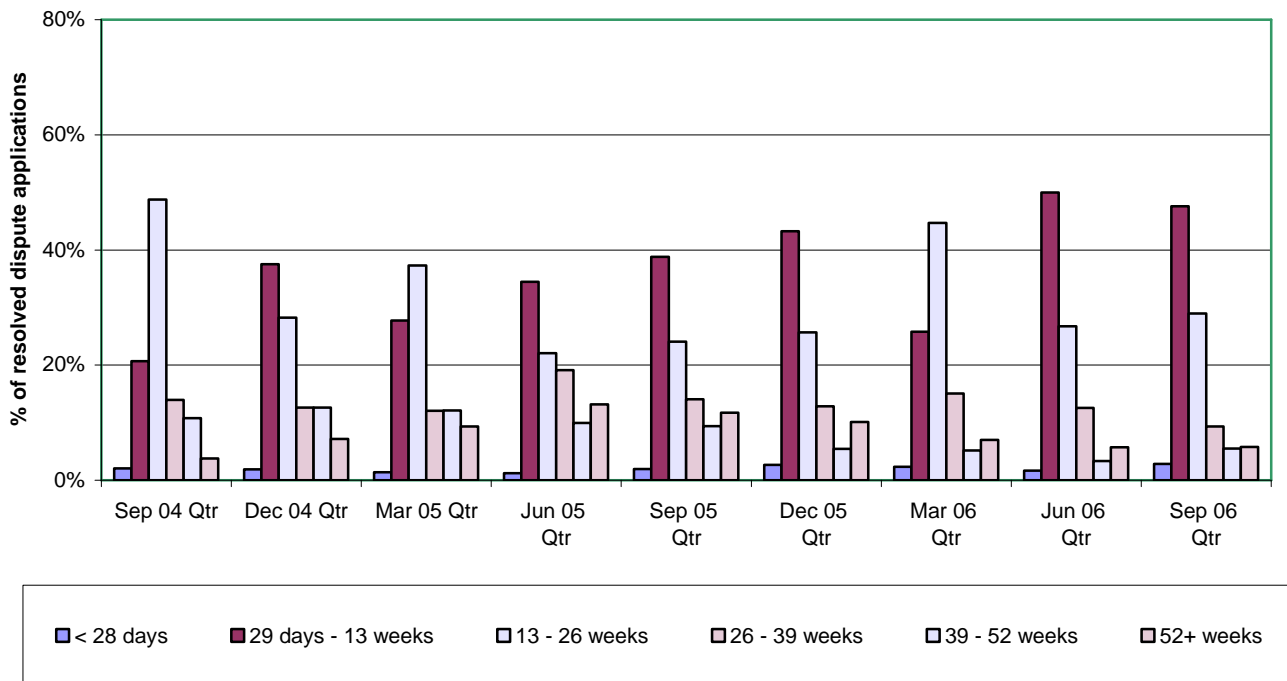
The average time taken to resolve disputes without appeals was 114 days from the date of registration. Lodgment of appeals has a significant impact on the time it takes to resolve disputes.

For matters without appeals, we finalised:

- 55% within 13 weeks
- 86% within 26 weeks
- 95% within 39 weeks.

Graph 4a below shows the time taken to resolve disputes without appeals

**Graph 4a - time taken to resolve dispute applications  
(including matters with appeals)**



### Expedited Assessment

In this quarter we received 183 applications for Interim Payment Directions (IPDs) and we finalised 260 IPDs. We issued 160 IPDs and refused 56. Of the remainder, a number were referred to an arbitrator for resolution.

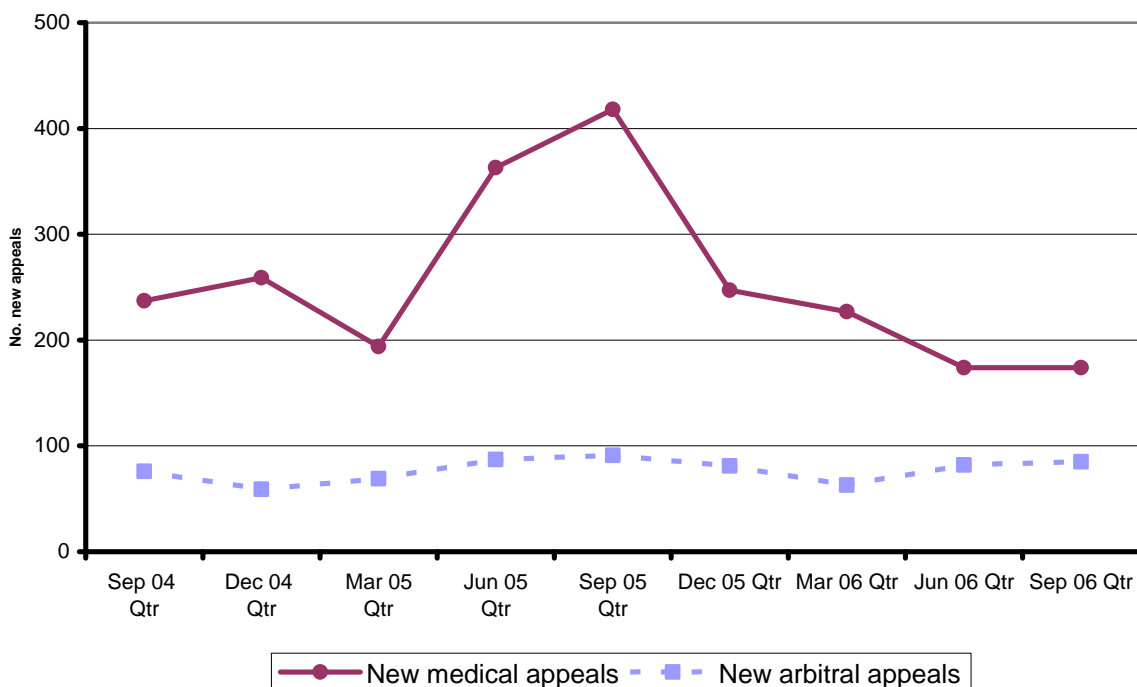
A total of 29 Workplace Injury Management (WIM) disputes were registered in the quarter and 44 WIM disputes were finalised over this period.

### Appeals<sup>1</sup>

In this quarter we received 85 new appeals against a decision of an arbitrator (an appeal rate of 14%). 144 arbitral appeals were finalised. Only 12% (73) of total determinations by arbitrators (616) were revoked or the matter remitted back to an arbitrator.

A total of 174 appeals against medical assessments were received this quarter (an appeal rate of 22%) and 234 were finalised. 14% (111) of total Medical Assessment Certificates (797) were revoked by the Appeal Panel.

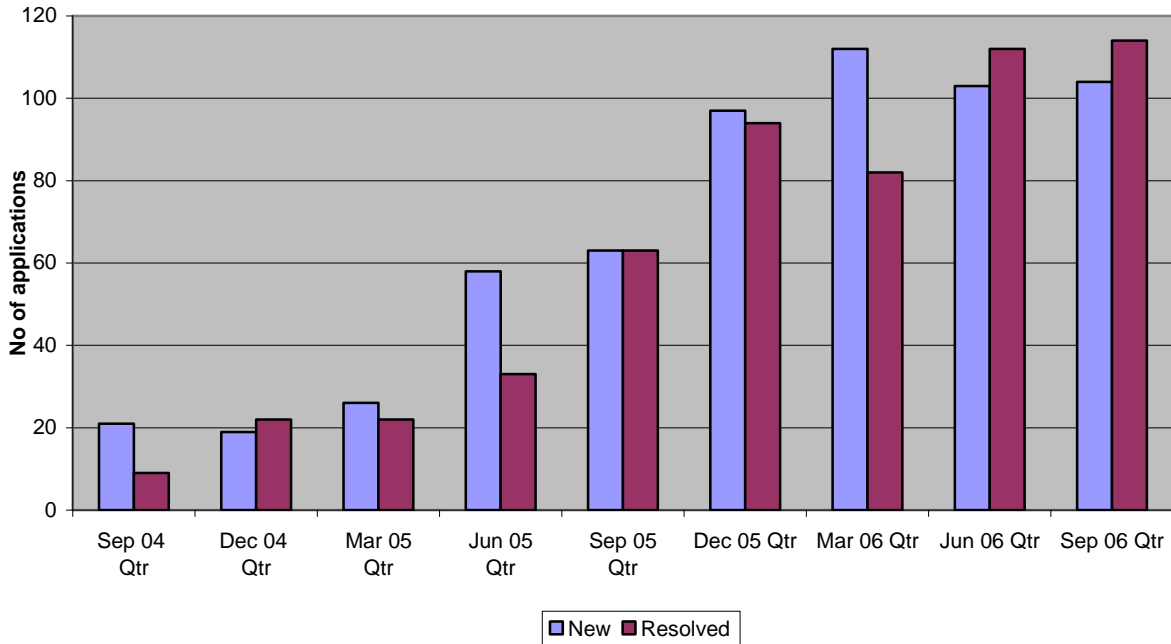
**Graph 5 - new appeals against decisions of arbitrators and AMS  
by quarter**



### Mediation

In this quarter we received 104 new applications. 114 applications for mediation were finalised in the September 2006 quarter.

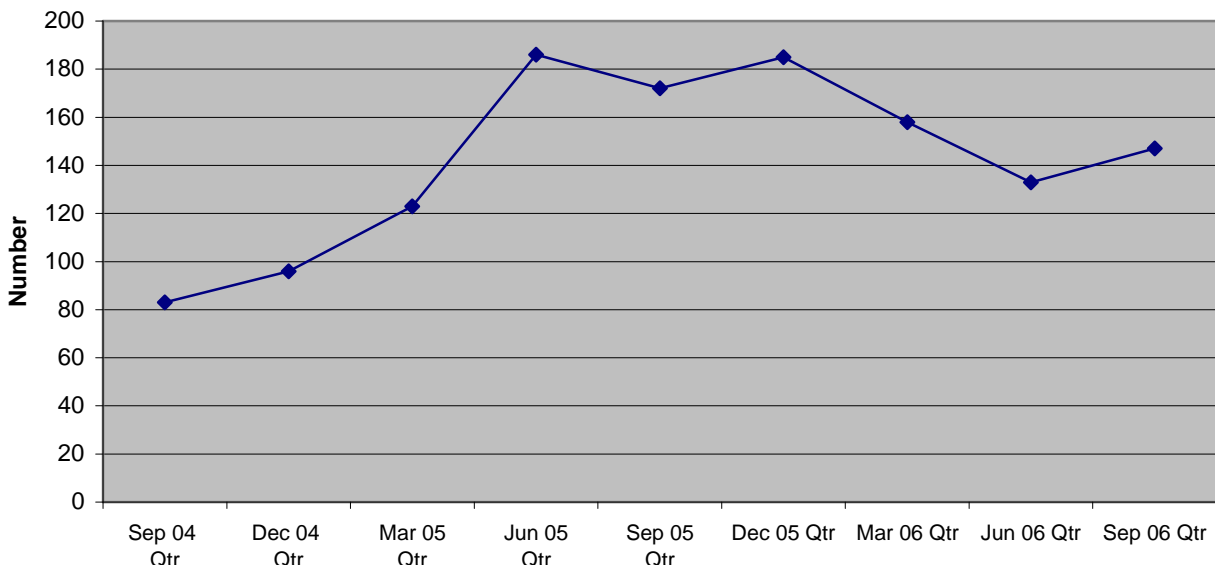
**Applications for mediation  
(work injury damages)**



### Costs

In the September 2006 quarter, we received 147 applications for assessment of costs.

**Application for Assessment of Costs**





# QUARTERLY REVIEW

July - September 2006

## Next quarterly review

We will publish our next quarterly review – covering the three-month period, from September 2006 – December 2006, in January 2007.

## Further information

If you have any queries or would like further information, please email us at [registry@wcc.nsw.gov.au](mailto:registry@wcc.nsw.gov.au)